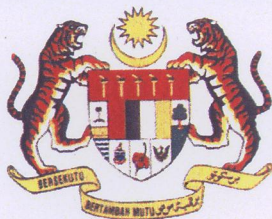


PENSWASTAAN PENYENGGARAAN  
JALAN-JALAN PERSEKUTUAN DI SABAH  
(PANTAI BARAT & PENDALAMAN)



THE GOVERNMENT OF MALAYSIA

**LAPORAN KEMAJUAN BULANAN  
NO. 15**

NOVEMBER 2004



*Jabatan Kerja Raya, Negeri Sabah*

*Concessionaire : Lintasan Resources Sdn. Bhd. 566483-H*

# **LINTASAN RESOURCES SDN. BHD.**

PENSWASTAAN PENYENGGARAAN JALAN-JALAN  
PERSEKUTUAN DI SABAH (PANTAI BARAT & PENDALAMAN)

---

## LAPORAN KEMAJUAN BULANAN NOVEMBER 2004

---

### ISI KANDUNGAN

<b><u>Bil:</u></b>	<b><u>PERKARA</u></b>
1.	Laporan Eksekutif Projek
2.	Carta Organisasi Syarikat
3.	Lokasi Jalan Persekutuan
4.	Ringkasan Laporan Kemajuan Bulanan
5.	R 01 - Penyenggaraan Permukaan Jalan
6.	R 02 - Penyenggaraan Bahu Jalan
7.	R 03 - Pemotongan Rumput
8.	R 04 - Penyenggaraan Perabot Jalan
9.	R 05 - Penyenggaraan Jambatan dan Pembentungan
10.	R 07 - Penyenggaraan Longkang
11.	B - Pemeriksaan Rutin

**LAPORAN  
EKSEKUTIF PROJEK**

## LAPORAN EKSEKUTIF PROJEK

---

<b>TAJUK KONTRAK</b>	:	PENSWASTAAN PENYENGGARAAN JALAN-JALAN PERSEKUTUAN DI SABAH (PANTAI BARAT & PENDALAMAN)
<b>KLIEN</b>	:	JABATAN KERJA RAYA, SABAH
<b>SYARIKAT</b>	:	LINTASAN RESOURCES SDN. BHD. Lot 1, Block A, Ground Floor, Wisma TP Mile 1 ½, Tuaran Road 88400 Kota Kinabalu, Sabah, Malaysia.
<b>TEMPOH</b>	:	15 TAHUN
<b>TARIKH MULA</b>	:	01hb September 2003
<b>TARIKH TAMAT</b>	:	31hb August 2018
<b>KAWASAN</b>	:	PANTAI BARAT & PENDALAMAN
<b>JALAN TERLIBAT</b>	:	Semua Jalan-Jalan Persekutuan Yang Diwartakan Dibawah Akta Jalan Persekutuan 1959
<b>PANJANG JALAN</b>	:	764.85 Kilometer
<b>KATOGORI JALAN</b>	:	a) Jalan Protocol b) Jalan Utama c) Jalan Sekunder
<b>SKOP KERJA</b>	:	a) Penyenggaraan Rutin b) Kerja-Kerja Kecemasan

### RINGKASAN LAPORAN :

#### ROUTINE MAINTENANCE

The heavy rain in previous month had subsided, though there were still periods of rain almost daily in November. With improved weather, generally, the road condition also improved as there were longer dry periods for patching work to be carried out. Stretches of roads, where potholes literally appeared overnight because of weak road foundation and because of prolong period of rain, were now back to normal presentable condition. Other activities of the routine maintenance were not unduly affected by weather and could go on, with progress adhering closely with the programmed schedule.

Damages to road shoulders, roadside drains and road furniture through pipe and cable-laying by other contractors continued to be the main problems faced by the Concessionaire. Heavy monetary deposit imposed for wayleave application and strict enforcement of specified conditions for default as deterrent may be the only answer to such rampant disregards and damage.

#### PERIODIC MAINTENANCE

The 2004 Period Works has been fully completed. Final account for each of the packages is being processed.

Given the existing weak conditions of certain stretches of roads, it is hoped that a bigger budget for the 2005 Periodic Programme be given so that these weak stretches can be rehabilitated to reasonable condition.

#### EMERGENCY WORK

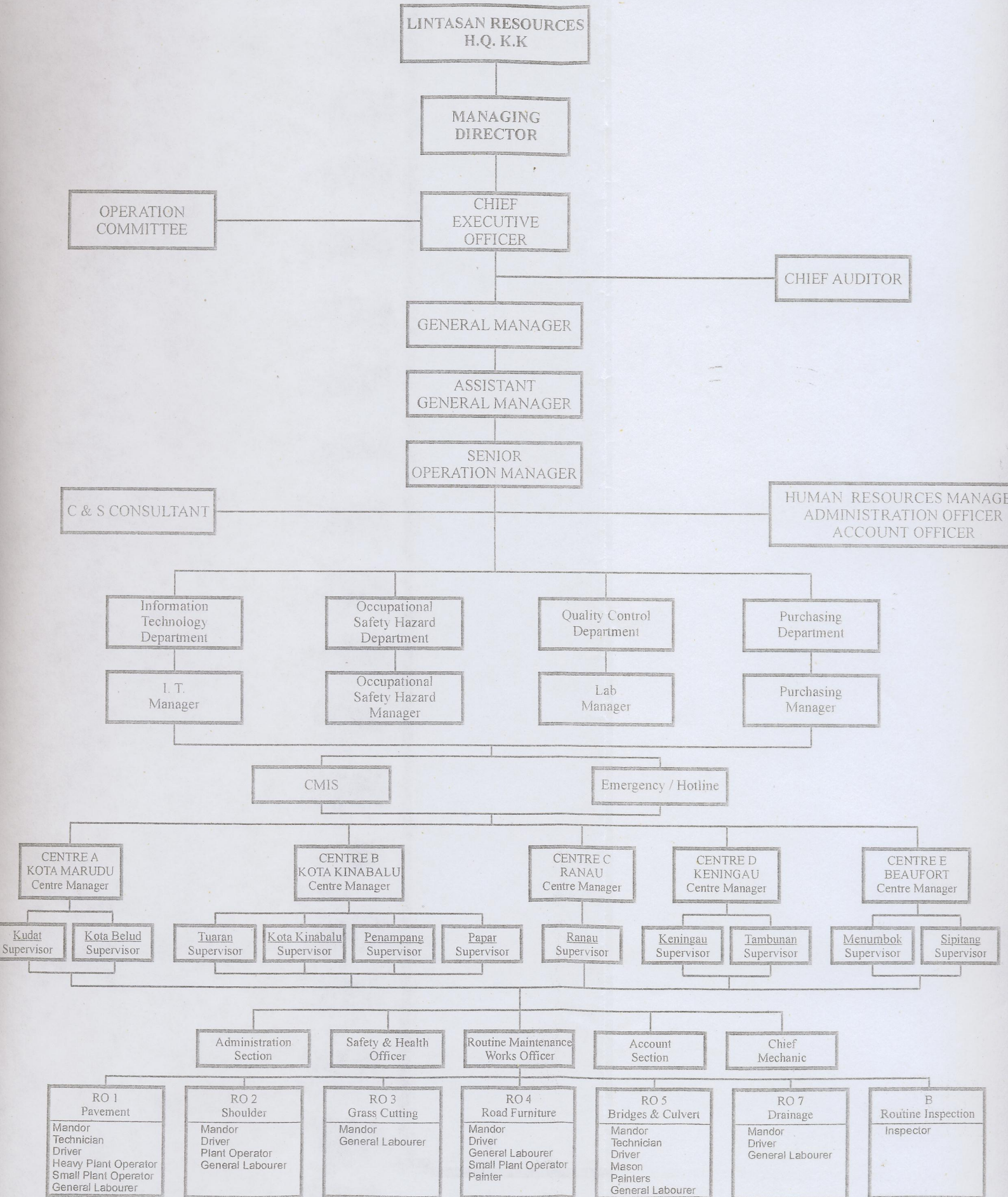
As for October, relatively little emergency work involved in November.

30/11/2004

**CARTA  
ORGANISASI SYARIKAT**

# LINTASAN RESOURCES SDN. BHD.

## ORGANISATION CHART FOR SABAH FEDERAL ROAD MAINTENANCE



**RINGKASAN  
LAPORAN KEMAJUAN  
BULANAN**

**KERJA-KERJA RUTIN**  
(ROUTINE MAINTENANCE)

**R 01**

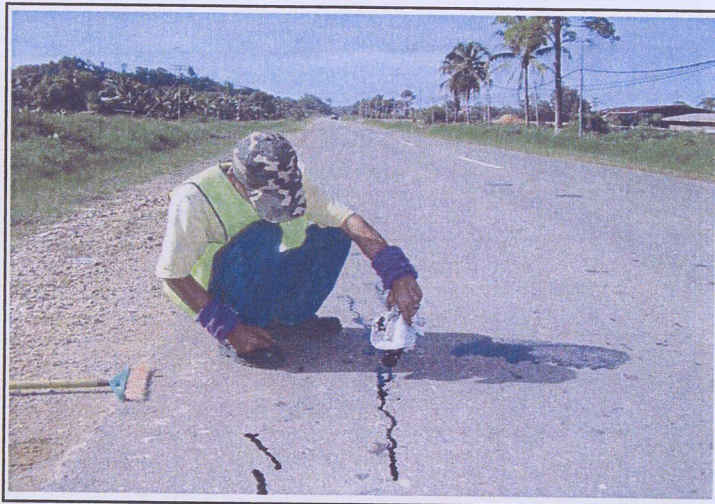
**PENYENGGARAAN  
PERMUKAAN JALAN  
(POTHOLE PATCHING)**

DISTRICT : BEAUFORT  
ROUTE NO : 01 JALAN KOTA KINABALU - SINDUMIN  
LOCATION : CH98.795 (KM100.555) - LHS

### SEALING OF CRACKS



**BEFORE**



**IN PROGRESS**



**AFTER**

LINTASAN RESOURCES SDN. BHD.  
**PAVEMENT REPAIR (SEALING OF CRACKS)**  
GRAND SUMMARY

MONTH: NOVEMBER 2004

R01 - PAVEMENT REPAIR					
DISTRICT	ROUTE NO	ROAD NAME	SEALING OF CRACKS		
			Previous Mth	Current Mth	Cuumulative
			(m)	(m)	(m)
Kota Belud	01	Jalan Kota Kinabalu-Kudat	773.79	1,237.00	2,010.79
Kota Marudu	01	Jalan Kota Kinabalu-Kudat	956.00	0.00	956.00
Kudat	01	Jalan Kota Kinabalu-Kudat	0.00	75.00	75.00
Tuaran	01	Jalan Kota Kinabalu-Kudat	0.00	0.00	0.00
	22	Jalan Kota Kinabalu-Sandakan	0.00	0.00	0.00
	503	Jalan Berungis-Kota Belud	0.00	0.00	0.00
Kota Kinabalu	01	Jalan Kota Kinabalu-Kudat	423.44	0.00	423.44
	01	Jalan Kota Kinabalu-Sindumin	0.00	0.00	0.00
	606	Jalan Susur Sepangar Bay	0.00	0.00	0.00
	607	Jalan Masuk Ke Pelabuhan Baru	0.00	0.00	0.00
	608	Jalan Masuk ke Lapangan Terbang Lama	180.30	0.00	180.30
Penampang	01	Jalan Kota Kinabalu-Sindumin	2,348.80	0.00	2,348.80
	500	Jalan Kota Kinabalu-Keningau-Tenom	0.00	0.00	0.00
	501	Jalan Kota Kinabalu-Penampang-Lokkawi	0.00	0.00	0.00
Papar	01	Jalan Kota Kinabalu-Sindumin	1,691.60	0.00	1,691.60
Ranau	22	Jalan Kota Kinabalu-Sandakan	0.00	0.00	0.00
Tambunan	500	Jalan Kota Kinabalu-Keningau-Tenom	* 822.40	761.77	1,584.17
Keningau	500	Jalan Kota Kinabalu-Keningau-Tenom	* 597.90	0.00	597.90
Tenom	500	Jalan Kota Kinabalu-Keningau-Tenom	* 193.30	0.00	193.30
Beaufort	01	Jalan Kota Kinabalu-Sindumin	1,341.29	87.20	1,428.49
	502	Jalan Beaufort-Menumbok	0.00	0.00	0.00
Sipitang	01	Jalan Kota Kinabalu-Sindumin	2,634.32	0.00	2,634.32
Kuala Penyu	502	Jalan Beaufort-Menumbok	0.00	0.00	0.00
<b>TOTAL</b>			<b>11,963.14</b>	<b>2,160.97</b>	<b>14,124.11</b>

\* Note: The brought forward balances from previous month were not reported previously.

**LINTASAN RESOURCES SDN BHD** (566483-H)  
 PRIVATISATION OF WEST COAST SABAH FEDERAL ROADS MAINTENANCE

SUMMARY FOR R01 - SEALING OF CRACK RECORD

Ending Period : 30th November 2004

ITEM	DISTRICT	ROUTE NO.	ROADNAME	LENGTH (M)		
				PREVIOUS MONTH	CURRENT MONTH	CUM. MONTH
1	KOTA BELUD	01	Jalan Kota Kinabalu - Kudat	773.79	1,237.00	2,010.79
2	KOTA MARUDU	01	Jalan Kota Kinabalu - Kudat	956.00	-	956.00
3	KUDAT	01	Jalan Kota Kinabalu - Kudat	-	75.00	75.00
<b>TOTAL :</b>				<b>1,729.79</b>	<b>1,312.00</b>	<b>3,041.79</b>

**LINTASAN RESOURCES SDN BHD** (566483-H)  
**PRIVATISATION OF WEST COAST SABAH FEDERAL ROADS MAINTENANCE**

SUMMARY FOR R01 - SEALING OF CRACK RECORD

Ending Period : 30th November 2004

ITEM	DISTRICT	ROUTE NO.	ROAD NAME	LENGTH ( m )		
				PREVIOUS MONTH	CURRENT MONTH	CUM. MONTH
<b>WEST COAST (NORTH)</b>						
1	Kota Kinabalu	01	Jalan Kota Kinabalu - Kudat	423.44	-	423.44
2	Tuaran	01	Jalan Kota Kinabalu - Kudat	-	-	-
3	Tuaran	22	Jalan Kota Kinabalu - Sandakan	-	-	-
4	Tuaran	503	Jalan Berungis - Kota Belud	-	-	-
5	Kota Kinabalu	606	Jalan Susur Sepangar Bay	-	-	-
6	Kota Kinabalu	607	Jalan Masuk ke Pelabuhan Baru, K.K.	-	-	-
<b>TOTAL:</b>				<b>423.44</b>	<b>-</b>	<b>423.44</b>
<b>WEST COAST (SOUTH)</b>						
1	Kota Kinabalu	01	Jalan Kota Kinabalu - Sindumin	-	-	-
2	Penampang	01	Jalan Kota Kinabalu - Sindumin	2,348.80	-	2,348.80
3	Papar	01	Jalan Kota Kinabalu - Sindumin	1,691.60	-	1,691.60
4	Penampang	500	Jalan Kota Kinabalu - Keningau - Tenom	-	-	-
5	Penampang	501	Jalan Kota Kinabalu - Penampang - Lok Kawi	-	-	-
6	Kota Kinabalu	608	Jalan masuk ke Lapangan Terbang Lama, K.K.	180.30	-	180.30
<b>TOTAL:</b>				<b>-</b>	<b>-</b>	<b>4,220.70</b>
<b>TOTAL LENGTH OF CRACK SEALED FOR ( NORTH + SOUTH ) =</b>				<b>423.44</b>	<b>-</b>	<b>4,644.14</b>

LINTASAN RESOURCES SDN BHD (566483-H)  
 PRIVATISATION OF WEST COAST SABAH FEDERAL ROADS MAINTENANCE

SUMMARY FOR R01 - SEALING OF CRACK RECORD

Ending Period : 30th November 2004

ITEM	DISTRICT	ROUTE NO.	ROAD NAME	LENGTH ( m )		
				PREVIOUS MONTH	CURRENT MONTH	CUM. MONTH
<b>KENINGAU CENTRE</b>						
1	Tambunan	500	Jalan Kota Kinabalu - Keningau - Tenom	822.40	761.77	1,584.17
2	Keningau	500	Jalan Kota Kinabalu - Keningau - Tenom	597.90	0.00	597.90
3	Tenom	500	Jalan Kota Kinabalu - Keningau - Tenom	193.30	0.00	193.30
<b>TOTAL LENGTH OF CRACK SEALED</b>				<b>1,613.60</b>	<b>761.77</b>	<b>2,375.37</b>

LINTASAN RESOURCES SDN BHD <sup>(566483-11)</sup>  
 PRIVATISATION OF WEST COAST SABAH FEDERAL ROADS MAINTENANCE

SUMMARY FOR R01 - SEALING OF CRACK RECORD

Ending Period : 30th November 2004

ITEM	DISTRICT	ROUTE NO.	ROAD NAME	LENGTH ( m )		
				PREVIOUS MONTH	CURRENT MONTH	CUM. MONTH
1	Beaufort	01	Jalan Kota Kinabalu - Sindumin	1,341.29	87.20	1,428.49
2	Beaufort	502	Jalan Beaufort-Menumbok	-	-	-
3	Sipitang	01	Jalan Kota Kinabalu - Sindumin	2,634.32	-	2,634.32
4	Kuala Penyu	502	Jalan Beaufort-Menumbok	-	-	-
<b>TOTAL LENGTH OF CRACK SEALED =</b>				<b>3,975.61</b>	<b>87.20</b>	<b>4,062.81</b>

DISTRICT : PENAMPANG  
ROUTE NO : 501 JALAN KK-PENAMPANG-LOK KAWI  
LOCATION : CH0.500

### R01 PAVING BLOCK



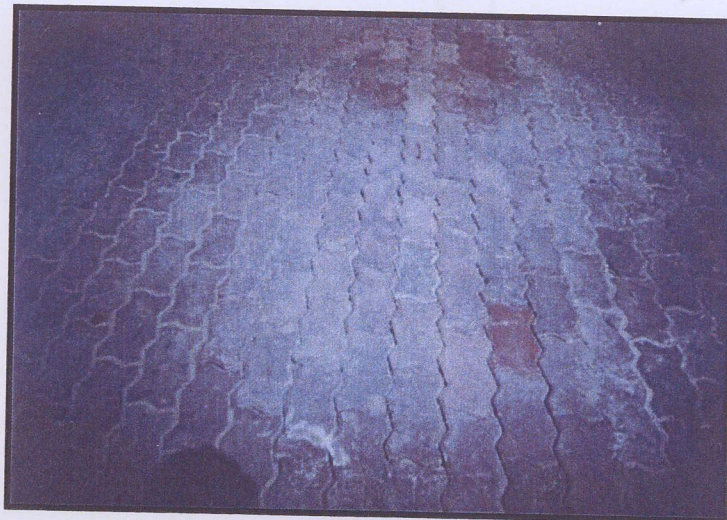
Picture No: 22114/13742

**BEFORE**



Picture No: 22114/13743

**IN PROGRESS**



Picture No: 22114/13741

**AFTER**

**LINTASAN RESOURCES SDN BHD** (566483-H)  
**PRIVATISATION OF WEST COAST SABAH FEDERAL ROADS MAINTENANCE**

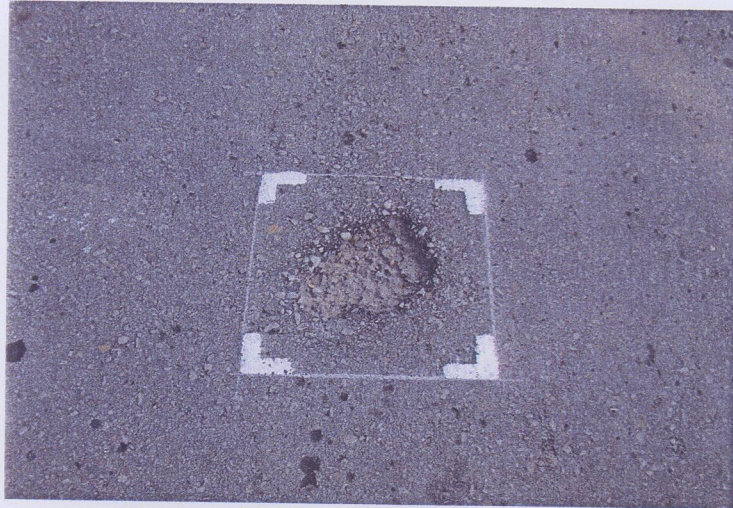
SUMMARY FOR R01 - REPAIR TO PAVING BLOCKS RECORD

Ending Period : 30th November 2004

ITEM	DISTRICT	ROUTE NO.	ROADNAME	AREA ( m <sup>2</sup> )		
				PREVIOUS MONTH	CURRENT MONTH	CUM. MONTH
1	Penampang	501	Jalan Kota Kinabalu - Penampang - Lok-Kawi	145.43	14.37	159.80
<b>TOTAL</b>				<b>145.43</b>	<b>14.37</b>	<b>159.80</b>

DISTRICT : KUDAT  
ROUTE NO : 01-JALAN KOTA KINABALU - KUDAT  
LOCATION : CH163.382

**R01 PAVEMENT**



Film Batch No: PB230027

**BEFORE**



Film Batch No: PB230031

**IN PROGRESS**



Film Batch No: PB230035

**AFTER**

DISTRICT : TUARAN  
ROUTE NO : 01 JALAN KOTA KINABALU-KUDAT  
LOCATION : KM25.250 (LHS)

### R01 PAVEMENT



Picture No: 23114/002

### BEFORE



Picture No: 23114/003

### IN PROGRESS



Picture No: 23114/005

### AFTER

DISTRICT : BEAUFORT  
ROUTE NO : 502 JALAN BEAUFORT - MENUMBOK  
LOCATION : CH6.285 (KM6.285) - RHS

### R01 PAVEMENT



**BEFORE**



**IN PROGRESS**



**AFTER**

LINTASAN RESOURCES SDN. BHD.  
**PAVEMENT REPAIR (POTHOLE PATCHING)**  
GRAND SUMMARY

MONTH: NOVEMBER 2004

<b>R01 - PAVEMENT REPAIR</b>					
DISTRICT	ROUTE NO	ROAD NAME	PREMIX FOR POTHOLE		
			Previous Mth	Current Mth	Cuumulative
			(ton)	(Ton)	(Ton)
Kota Belud	01	Jalan Kota Kinabalu-Kudat	207.83	22.32	230.15
Kota Marudu	01	Jalan Kota Kinabalu-Kudat	11.02	0.00	11.02
Kudat	01	Jalan Kota Kinabalu-Kudat	10.80	0.00	10.80
Tuaran	01	Jalan Kota Kinabalu-Kudat	483.57	58.19	541.76
	22	Jalan Kota Kinabalu-Sandakan	102.88	14.35	117.23
	503	Jalan Berungis-Kota Belud	16.79	3.10	19.89
Kota Kinabalu	01	Jalan Kota Kinabalu-Kudat	578.17	63.34	641.51
	01	Jalan Kota Kinabalu-Sindumin	17.52	0.73	18.25
	606	Jalan Susur Sepangar Bay	55.64	21.68	77.32
	607	Jalan Masuk Ke Pelabuhan Baru	2.42	0.00	2.42
	608	Jalan Masuk ke Lapangan Terbang Lama	9.27	0.00	9.27
Penampang	01	Jalan Kota Kinabalu-Sindumin	25.97	4.59	30.56
	500	Jalan Kota Kinabalu-Keningau-Tenom	324.33	110.90	435.23
	501	Jalan Kota Kinabalu-Penampang-Lokkawi	156.97	3.24	160.21
Papar	01	Jalan Kota Kinabalu-Sindumin	446.61	59.26	505.87
Ranau	22	Jalan Kota Kinabalu-Sandakan	607.16	77.51	684.67
Tambunan	500	Jalan Kota Kinabalu-Keningau-Tenom	95.66	3.58	99.24
Keningau	500	Jalan Kota Kinabalu-Keningau-Tenom	6.07	0.28	6.35
Tenom	500	Jalan Kota Kinabalu-Keningau-Tenom	4.20	0.00	4.20
Beaufort	01	Jalan Kota Kinabalu-Sindumin	43.81	0.60	44.41
	502	Jalan Beaufort-Menumbok	39.27	3.17	42.44
Sipitang	01	Jalan Kota Kinabalu-Sindumin	31.49	0.16	31.65
Kuala Penyu	502	Jalan Beaufort-Menumbok	16.41	0.00	16.41
<b>TOTAL</b>			<b>3,293.86</b>	<b>447.00</b>	<b>3,740.86</b>

**LINTASAN RESOURCES SDN BHD** (566483-H)  
 PRIVATISATION OF WEST COAST SABAH FEDERAL ROADS MAINTENANCE

SUMMARY FOR R01 - POTHoles PATCHING RECORD

Ending Period : 30th November 2004

ITEM	DISTRICT	ROUTE NO.	ROADNAME	AREA ( m <sup>2</sup> )		PREMIX QUANTITY ( TON )			INVENTORY CARRIAGEWAY ESTIMATE QTY (m <sup>2</sup> )	
				PREVIOUS MONTH	CURRENT MONTH	PREVIOUS MONTH	CURRENT MONTH	CUM. MONTH		
1	KOTA BELUD	01	Jalan Kota Kinabalu - Kudat	1,721.13	186.34	207.83	22.32	1,907.47	230.15	313,971.000
2	KOTA MARUDU	01	Jalan Kota Kinabalu - Kudat	91.15	-	11.02	-	91.15	11.02	180,993.00
3	KUDAT	01	Jalan Kota Kinabalu - Kudat	89.91	-	10.80	-	89.91	10.80	308,338.00
<b>TOTAL</b>				<b>1,902.19</b>	<b>186.34</b>	<b>229.65</b>	<b>22.32</b>	<b>2,088.53</b>	<b>251.97</b>	<b>803,302.00</b>

**LINTASAN RESOURCES SDN BHD** (566483-H)  
**PRIVATISATION OF WEST COAST SABAH FEDERAL ROADS MAINTENANCE**

SUMMARY FOR R01 - POTHOLES PATCHING RECORD

Ending Period : 30<sup>th</sup> November 2004

ITEM	DISTRICT	ROUTE NO.	ROAD NAME	AREA ( m <sup>2</sup> )		PREMIX QUANTITY ( TON )			
				PREVIOUS MONTH	CURRENT MONTH	CUM. MONTH	PREVIOUS MONTH	CURRENT MONTH	CUM. MONTH
<b>WEST COAST (NORTH)</b>									
1	Kota Kinabalu	01	Jalan Kota Kinabalu - Kudat	4,129.93	539.55	4,669.48	578.17	63.34	641.51
2	Tuaran	01	Jalan Kota Kinabalu - Kudat	3,366.61	480.18	3,846.79	483.57	58.19	541.76
3	Tuaran	22	Jalan Kota Kinabalu - Sandakan	756.37	109.09	865.46	102.88	14.35	117.23
4	Tuaran	503	Jalan Berungis - Kota Belud	106.11	25.91	132.02	16.79	3.10	19.89
5	Kota Kinabalu	606	Jalan Susur Sepangar Bay	325.55	171.80	497.35	55.64	21.68	77.32
6	Kota Kinabalu	607	Jalan Masuk ke Pelabuhan Baru, K.K.	16.94	-	16.94	2.42	-	2.42
<b>TOTAL:</b>				<b>8,701.51</b>	<b>1,326.53</b>	<b>10,028.04</b>	<b>1,239.47</b>	<b>160.66</b>	<b>1,400.13</b>
<b>WEST COAST (SOUTH)</b>									
1	Kota Kinabalu	01	Jalan Kota Kinabalu - Sindumin	121.14	6.06	127.20	17.52	0.73	18.25
2	Penampang	01	Jalan Kota Kinabalu - Sindumin	207.28	27.41	234.69	25.97	4.59	30.56
3	Papar	01	Jalan Kota Kinabalu - Sindumin	3,285.78	494.46	3,780.24	446.61	59.26	505.87
4	Penampang	500	Jalan Kota Kinabalu - Keningau - Tenom	2,012.29	767.28	2,779.57	324.33	110.90	435.23
5	Penampang	501	Jalan Kota Kinabalu - Penampang - Lok Kawi	987.20	27.27	1,014.47	156.97	3.24	160.21
6	Kota Kinabalu	608	Jalan masuk ke Lapangan Terbang Lama, K.K.	70.31	-	70.31	9.27	-	9.27
<b>TOTAL:</b>				<b>6,684.00</b>	<b>1,322.48</b>	<b>8,006.48</b>	<b>980.67</b>	<b>178.72</b>	<b>1,159.39</b>
<b>TOTAL FOR ( NORTH + SOUTH ) =</b>				<b>15,385.51</b>	<b>2,649.01</b>	<b>18,034.52</b>	<b>2,220.14</b>	<b>339.38</b>	<b>2,559.52</b>

**LINTASAN RESOURCES SDN BHD** (566483-H)  
 PRIVATISATION OF WEST COAST SABAH FEDERAL ROADS MAINTENANCE

SUMMARY FOR R01 - POTHOLES PATCHING RECORD

Ending Period : 30th November 2004

ITEM	DISTRICT	ROUTE NO.	ROADNAME	AREA ( m <sup>2</sup> )		PREMIX QUANTITY ( TON )		
				PREVIOUS MONTH	CURRENT MONTH	PREVIOUS MONTH	CURRENT MONTH	CUM. MONTH
1	Ranau	22	Jalan Kota Kinabalu - Sandakan	2,944.19	531.36	607.16	77.51	684.67
<b>TOTAL</b>				<b>2,944.19</b>	<b>531.36</b>	<b>607.16</b>	<b>77.51</b>	<b>684.67</b>

**LINTASAN RESOURCES SDN BHD** (566483-H)  
 PRIVATISATION OF WEST COAST SABAH FEDERAL ROADS MAINTENANCE

SUMMARY FOR R01 - POTHOLE PATCHING RECORD

*Ending Period : 30 NOVEMBER 2004*

ITEM	DISTRICT	ROUTE NO.	ROADNAME	AREA (m <sup>2</sup> )			PREMIX QUANTITY (TON)			INVENTORY CARRIAGEWAY ESTIMATE QTY (m2)
				PREVIOUS MONTH	CURRENT MONTH	CUM. MONTH	PREVIOUS MONTH	CURRENT MONTH	CUM. MONTH	
1	Tambunan	500	Jalan Kota Kinabalu - Keningau - Tenom	707.95	29.35	737.30	95.66	3.58	99.24	398,552.47
2	Keningau	500	Jalan Kota Kinabalu - Keningau - Tenom	46.63	1.58	48.21	6.07	0.28	6.35	278,055.67
3	Tenom	500	Jalan Kota Kinabalu - Keningau - Tenom	31.79	0.00	31.79	4.20	0.00	4.20	179,227.77
<b>TOTAL</b>				<b>786.37</b>	<b>30.93</b>	<b>817.30</b>	<b>105.93</b>	<b>3.86</b>	<b>109.79</b>	<b>855,835.91</b>

**LINTASAN RESOURCES SDN BHD** (566483-H)  
 PRIVATISATION OF WEST COAST SABAH FEDERAL ROADS MAINTENANCE

**SUMMARY FOR R01 - POTHoles PATCHING RECORD**

*Ending Period : 30th November 2004*

ITEM	DISTRICT	ROUTE NO.	ROADNAME	AREA ( m <sup>2</sup> )			PREMIX QUANTITY ( TON )		
				PREVIOUS MONTH	CURRENT MONTH	CUM. MONTH	PREVIOUS MONTH	CURRENT MONTH	CUM. MONTH
1	Beaufort	01	Jalan Kota Kinabalu - Sindumin	349.95	5.02	354.97	43.81	0.60	44.41
2	Beaufort	502	Jalan Beaufort-Menumbok	323.79	26.69	350.48	39.27	3.17	42.44
3	Sipitang	01	Jalan Kota Kinabalu - Sindumin	260.53	1.40	261.93	31.49	0.16	31.65
4	Kuala Penyu	502	Jalan Beaufort-Menumbok	136.88	0.00	136.88	16.41	0.00	16.41
<b>TOTAL</b>				<b>1,071.15</b>	<b>33.11</b>	<b>1,104.26</b>	<b>130.98</b>	<b>3.93</b>	<b>134.91</b>

DISTRICT : TAMBUNAN  
ROUTE NO : 500 JALAN KOTA KINABALU-KENINGAU-TENOM  
LOCATION : CH82.800

### R01 PAVEMENT



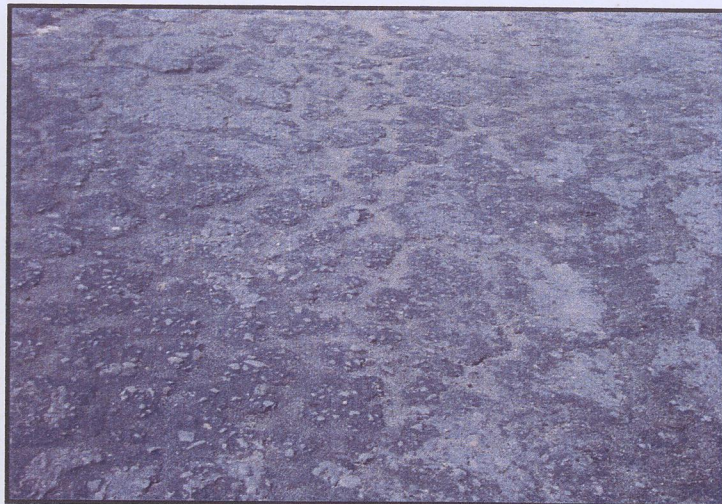
Film Batch No: R01-1104-01

**BEFORE**



Film Batch No: R01-1104-02

**IN PROGRESS**



Film Batch No: R01-1104-03

**AFTER**

DISTRICT : TAMBUNAN  
ROUTE NO : 500 JALAN KOTA KINABALU-KENINGAU-TENOM  
LOCATION : CH82.850

**R01 PAVEMENT**



Film Batch No: R01-1104-04

**BEFORE**



Film Batch No: R01-1104-05

**IN PROGRESS**



Film Batch No: R01-1104-06

**AFTER**

**LINTASAN RESOURCES SDN BHD** (566483-H)  
 PRIVATISATION OF WEST COAST SABAH FEDERAL ROADS MAINTENANCE

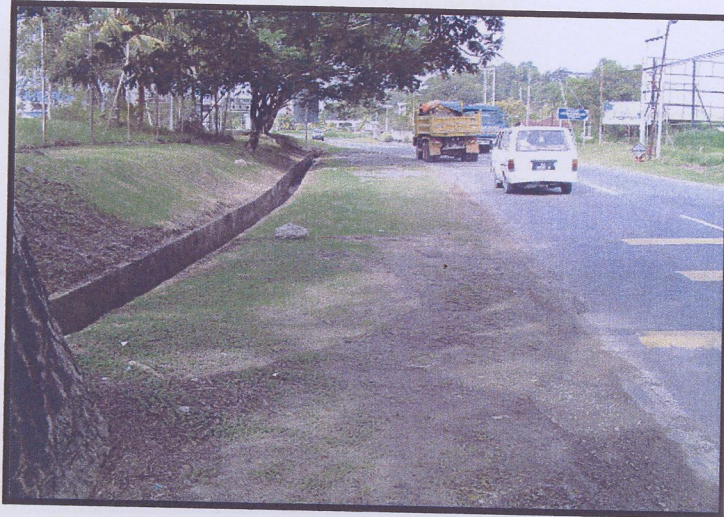
SUMMARY FOR R01 - SEALING OF CRACK RECORD

Ending Period : 30th November 2004

ITEM	DISTRICT	ROUTE NO.	ROADNAME	LENGTH (M)		
				PREVIOUS MONTH	CURRENT MONTH	CUM. MONTH
1	KOTA BELUD	01	Jalan Kota Kinabalu - Kudat	773.79	1,237.00	2,010.79
2	KOTA MARUDU	01	Jalan Kota Kinabalu - Kudat	956.00	-	956.00
3	KUDAT	01	Jalan Kota Kinabalu - Kudat	-	75.00	75.00
<b>TOTAL :</b>				<b>1,729.79</b>	<b>1,312.00</b>	<b>3,041.79</b>

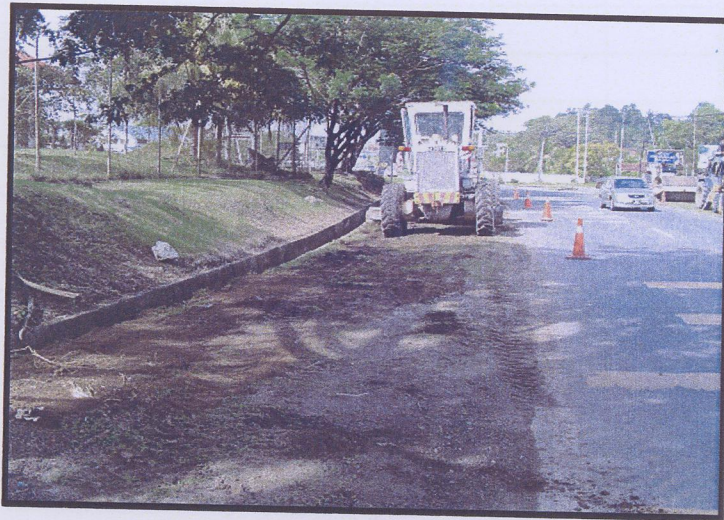
DISTRICT : PENAMPANG  
ROUTE NO : 500 JALAN KK-KENINGAU-TENOM  
LOCATION : CH1.20 (RHS)

### R02 SHOULDER



Picture No: 24114/008

### BEFORE



Picture No: 24114/009

### IN PROGRESS



Picture No: 24114/036

### AFTER

DISTRICT : KOTA BELUD  
ROUTE NO : 01-JALAN KOTA KINABALU-KUDAT  
LOCATION : CH 79.070

### R02 SHOULDER



Film Batch No: PB250214

**BEFORE**



Film Batch No: PB240005

**IN PROGRESS**



Film Batch No: PB240001

**AFTER**

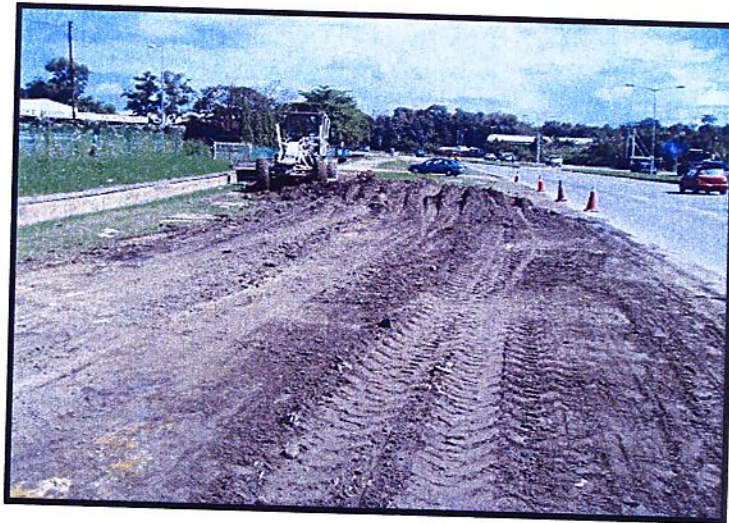
DISTRICT : TUARAN  
ROUTE NO : 01 JALAN KOTA KINABALU-KUDAT  
LOCATION : CH12.400 (LHS)

### R02 SHOULDER



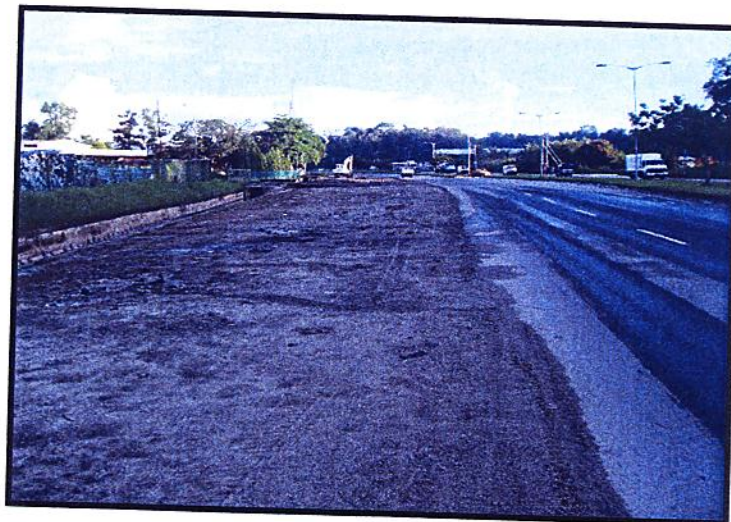
Picture No: 3114/007

**BEFORE**



Picture No: 3114/011

**IN PROGRESS**

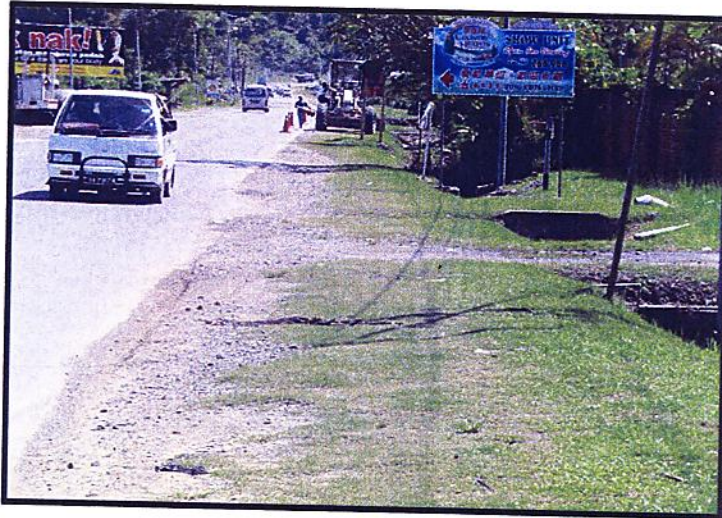


Picture No: 12114/005

**AFTER**

DISTRICT : PENAMPANG  
ROUTE NO : 500 JALAN KK-KENINGAU-TENOM  
LOCATION : CH2.00 (RHS)

### R02 SHOULDER



Picture No: 24114/027

**BEFORE**



Picture No: 24114/028

**IN PROGRESS**



Picture No: 24114/039

**AFTER**

## LINTASAN RESOURCES SDN BHD

**SHOULDER REPAIR****GRAND SUMMARY**

MONTH: NOVEMBER 2004

R02 - SHOULDER REPAIR								
DISTRICT	ROUTE NO	ROAD NAME	EARTH SHOULDER			GRAVEL SHOULDER		
			Previous	Current	Cumm.	Previous	Current	Cumm.
			(m <sup>2</sup> )	(m <sup>2</sup> )	(m <sup>2</sup> )	(m <sup>2</sup> )	(m <sup>2</sup> )	(m <sup>2</sup> )
Kota Belud	01	Jalan Kota Kinabalu-Kudat	488 81	1,800 00	2,288 81	405 42	-	405 42
Kota Marudu	01	Jalan Kota Kinabalu-Kudat	-	-	-	-	-	-
Kudat	01	Jalan Kota Kinabalu-Kudat	-	-	-	300 00	-	300 00
Tuaran	01	Jalan Kota Kinabalu-Kudat	60 00	-	60 00	1,520 00	-	1,520 00
	22	Jalan Kota Kinabalu-Sandakan	390 00	-	390 00	-	-	-
	503	Jalan Berungis-Kota Belud	-	-	-	-	-	-
Kota Kinabalu	01	Jalan Kota Kinabalu-Kudat	1,831 00	2,929 90	4,760 90	20,941 18	677 60	21,618 78
	01	Jalan Kota Kinabalu-Sindumin	-	-	-	75 75	-	75 75
	606	Jalan Susur Sepangar Bay	-	-	-	-	-	-
	607	Jalan Masuk Ke Pelabuhan Baru	-	-	-	-	-	-
	608	Jalan Masuk ke Lapangan Terbang Lama	-	-	-	-	-	-
Penampang	01	Jalan Kota Kinabalu-Sindumin	8,463 00	850 00	9,313 00	3,540 00	3,474 00	7,014 00
	500	Jalan Kota Kinabalu-Keningau-Tenom	3,190 00	8,421 25	11,611 25	11,217 77	670 40	11,888 17
	501	Jalan Kota Kinabalu-Penampang-Lokkawı	-	467 50	467 50	8,120 13	1,213 50	9,333 63
Papar	01	Jalan Kota Kinabalu-Sindumin	6,895 00	2,700 00	9,595 00	207 27	-	207 27
Ranau	22	Jalan Kota Kinabalu-Sandakan	2,010 40	708 00	2,718 40	1,799 23	-	1,799 23
Tambunan	500	Jalan Kota Kinabalu-Keningau-Tenom	6,573 19	-	6,573 19	2,126 43	-	2,126 43
Keningau	500	Jalan Kota Kinabalu-Keningau-Tenom	-	-	-	862 09	-	862 09
Tenom	500	Jalan Kota Kinabalu-Keningau-Tenom	-	-	-	88 20	-	88 20
Beaufort	01	Jalan Kota Kinabalu-Sindumin	27 00	362 70	389 70	5,952 34	-	5,952 34
	502	Jalan Beaufort-Menumbok	175 00	-	175 00	96 60	-	96 60
Sipitang	01	Jalan Kota Kinabalu-Sindumin	-	-	-	40 39	-	40 39
Kuala Penyu	502	Jalan Beaufort-Menumbok	-	-	-	119 70	-	119 70
<b>TOTAL</b>			<b>30,103.40</b>	<b>18,239.35</b>	<b>48,342.75</b>	<b>57,412.50</b>	<b>6,035.50</b>	<b>63,448.00</b>

**LINTASAN RESOURCES SDN BHD** (566483-H)  
 PRIVATISATION OF WEST COAST SABAH FEDERAL ROADS MAINTENANCE

SUMMARY FOR R02 - SHOULDER REPAIR SUMMARY

Ending Period : 30 November 2004

ITEM	DISTRICT	ROUTE NO.	ROADNAME	EARTH SHOULDER AREA ( m <sup>2</sup> )			GRAVEL SHOULDER AREA (m <sup>2</sup> )			GRASS INVENTORY		ROAD SHOULDER DEFECT (m <sup>2</sup> )
				PREVIOUS MONTH	CURRENT MONTH	CUM. MONTH	PREVIOUS MONTH	CURRENT MONTH	CUM. MONTH	EARTH SHOULDER ESTIMATE QTY (m <sup>2</sup> )	GRAVEL SHOULDER ESTIMATE QTY (m <sup>2</sup> )	
<b><u>WEST COAST (NORTH)</u></b>												
1	KOTA BELUD	01	Jalan Kota Kinabalu - Kudat	488.81	1,800.00	2,288.81	405.42	-	405.42	325,804.50	1,225.40	23,342.70
2	KOTA MARUDU	01	Jalan Kota Kinabalu - Kudat	-	-	-	-	-	-	184,545.00	14,474.50	18,724.48
3	KUDAT	01	Jalan Kota Kinabalu - Kudat	-	-	-	300.00	-	300.00	313,817.50	5,445.60	911.00
<b>TOTAL</b>				<b>488.81</b>	<b>1,800.00</b>	<b>2,288.81</b>	<b>705.42</b>	<b>-</b>	<b>705.42</b>	<b>824,167.00</b>	<b>21,145.50</b>	<b>42,978.18</b>



LINTASAN RESOURCES SDN BHD (566483-H)  
 PRIVATISATION OF WEST COAST SABAH FEDERAL ROADS MAINTENANCE

SUMMARY FOR R02 - SHOULDER REPAIR RECORD

Ending Period : 30th November 2004

ITEM	DISTRICT	ROUTE NO.	ROADNAME	EARTH SHOULDER - AREA (m <sup>2</sup> )		GRAVEL SHOULDER - AREA (m <sup>2</sup> )	
				PREVIOUS MONTH	CURRENT MONTH	PREVIOUS MONTH	CURRENT MONTH
1	Ranau	22	Jalan Kota Kinabalu - Sandakan	2,010.40	708.00	1,799.23	-
<b>TOTAL</b>				<b>2,010.40</b>	<b>708.00</b>	<b>1,799.23</b>	<b>-</b>
						<b>1,799.23</b>	<b>1,799.23</b>

**LINTASAN RESOURCES SDN BHD** (566483-H)  
 PRIVATISATION OF WEST COAST SABAH FEDERAL ROADS MAINTENANCE

**SUMMARY FOR R02 - SHOULDER REPAIR SUMMARY**

**Ending Period : 30TH NOVEMBER 2004**

ITEM	DISTRICT	ROUTE NO.	ROADNAME	EARTH SHOULDER AREA (m2)			GRAVEL SHOULDER AREA (m2)			INVENTORY		ROAD SHOULDER SHOULDER DEFECTS (M2)
				PREVIOUS MONTH	CURRENT MONTH	CUM. MONTH	PREVIOUS MONTH	CURRENT MONTH	CUM. MONTH	EARTH SHOULDER ESTIMATE QTY (m2)	GRAVEL SHOULDER ESTIMATE QTY (m2)	
1	Tambunan	500	Jalan K.K - Keningau - Tenom	6573.19	0.00	6573.19	2126.43	0.00	2126.43	187,150.00	143545	41,772.50
2	Keningau	500	Jalan K.K - Keningau - Tenom	0.00	0.00	0.00	862.09	0.00	862.09	67,600.00	114,620.00	18,785.70
3	Tenom	500	Jalan K.K - Keningau - Tenom	0.00	0.00	0.00	88.20	0.00	88.20	50,750.00	117,000.00	8,808.44
<b>TOTAL</b>				<b>6,573.19</b>	<b>-</b>	<b>6,573.19</b>	<b>3,076.7</b>	<b>-</b>	<b>3,076.7</b>	<b>305,500.00</b>	<b>375,165.00</b>	<b>69,366.64</b>

**LINTASAN RESOURCES SDN BHD** (566483-H)  
 PRIVATISATION OF WEST COAST SABAH FEDERAL ROADS MAINTENANCE

SUMMARY FOR R02 - SHOULDER REPAIR RECORD

Ending Period : 30th NOVEMBER 2004

ITEM	DISTRICT	ROUTE NO.	ROADNAME	AREA ( m <sup>2</sup> ) - Earth Shoulder		AREA ( m <sup>2</sup> ) - Gravel Shoulder	
				PREVIOUS MONTH	CURRENT MONTH	PREVIOUS MONTH	CURRENT MONTH
1	Beaufort	01	Jalan Kota Kinabalu - Sindumin	27.00	362.70	5952.34	0.00
2	Beaufort	502	Jalan Beaufort-Menumbok	175.00	0.00	96.60	0.00
3	Sipitang	01	Jalan Kota Kinabalu - Sindumin	0.00	0.00	40.39	0.00
4	Kuala Penyu	502	Jalan Beaufort-Menumbok	0.00	0.00	119.70	0.00
<b>TOTAL</b>				<b>202.00</b>	<b>362.70</b>	<b>6,209.03</b>	<b>-</b>
						<b>6,209.03</b>	<b>6,209.03</b>

**R 03**

**PEMOTONGAN  
RUMPUT  
(GRASS CUTTING)**

DISTRICT : KUDAT  
ROUTE NO : 01-JALAN KOTA KINABALU - KUDAT  
LOCATION : CH152.032

### R03 GRASS CUTTING



Film Batch No. PB240013

**BEFORE**



Film Batch No: PB240015

**IN PROGRESS**

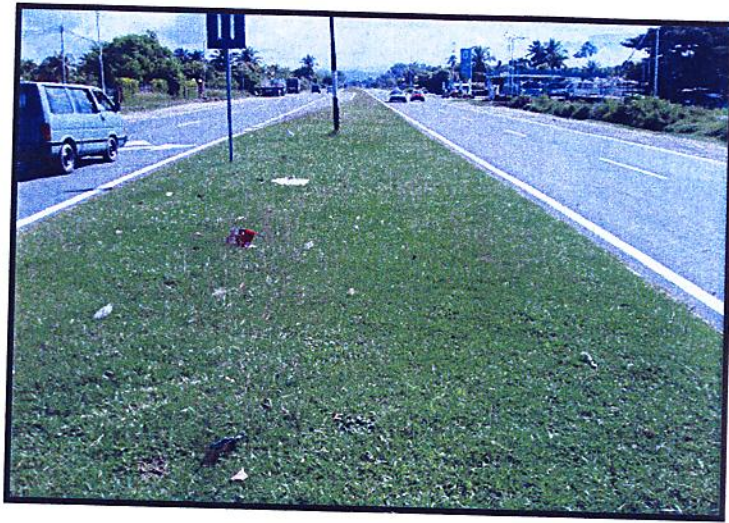


Film Batch No: PB240017

**AFTER**

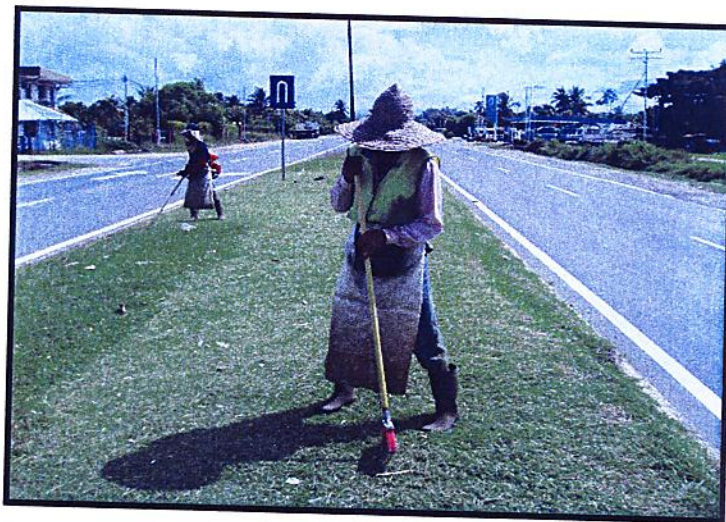
DISTRICT : TUARAN  
ROUTE NO : 01 JALAN KOTA KINABALU-KUDAT  
LOCATION : KM30.550

### R03 GRASS CUTTING



Picture No 19114/004

**BEFORE**



Picture No 19114/005

**IN PROGRESS**



Picture No 19114/016

**AFTER**

DISTRICT : TAMBUNAN  
ROUTE NO : 500 JALAN KOTA KINABALU-KENINGAU-TENOM  
LOCATION : CH68.100 -LHS

### R03 GRASS CUTTING



Film Batch No: R03-1104-01

**BEFORE**



Film Batch No: R03-1104-02

**IN PROGRESS**



Film Batch No: R03-1104-03

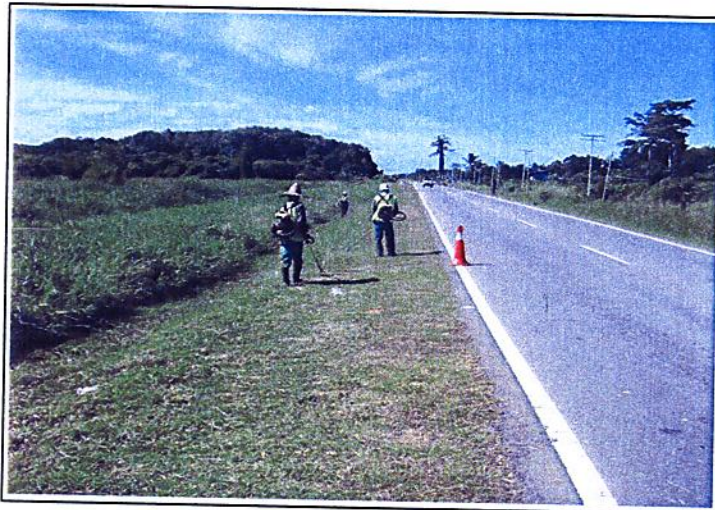
**AFTER**

DISTRICT : BEAUFORT  
ROUTE NO : 01 JALAN KOTA KINABALU - SINDUMIN  
LOCATION : CH84.280 (KM86.040) - LHS

### R03 GRASS CUTTING



**BEFORE**



**IN PROGRESS**



**AFTER**

**R 04**

**PENYENGGARAAN  
PERABOT JALAN  
(ROAD FURNITURE)**

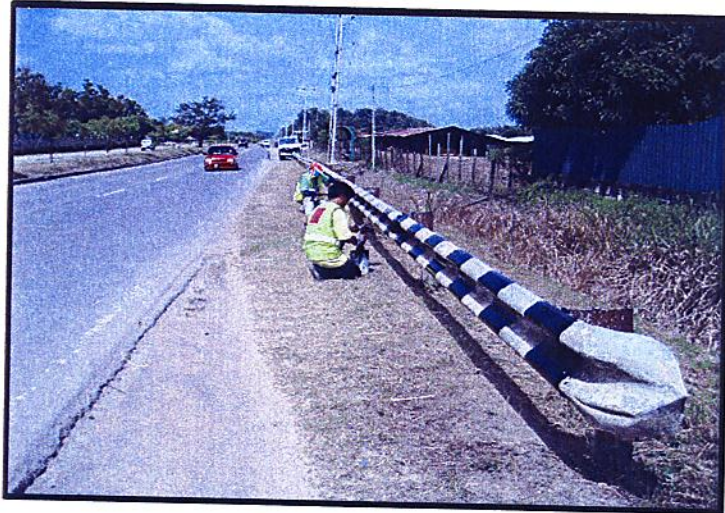
DISTRICT : TUARAN  
ROUTE NO : 01 JALAN KOTA KINABALU-KUDAT  
LOCATION : KM24.458

### R04 ROAD FURNITURE



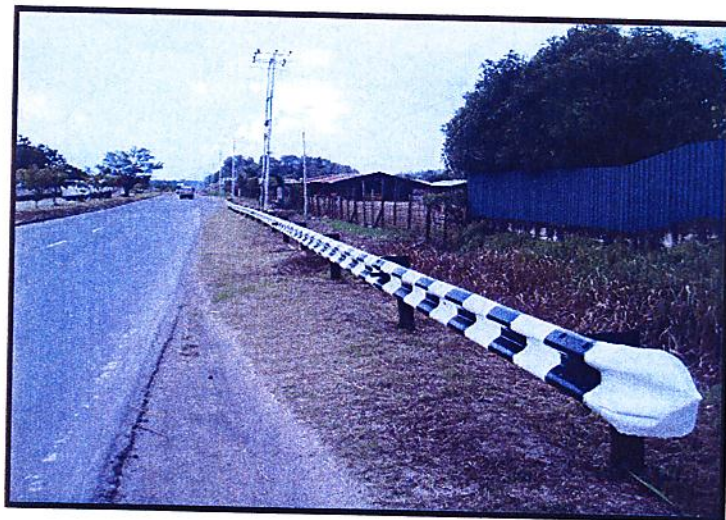
Picture No: 22114/001

**BEFORE**



Picture No. 22114.002

**IN PROGRESS**

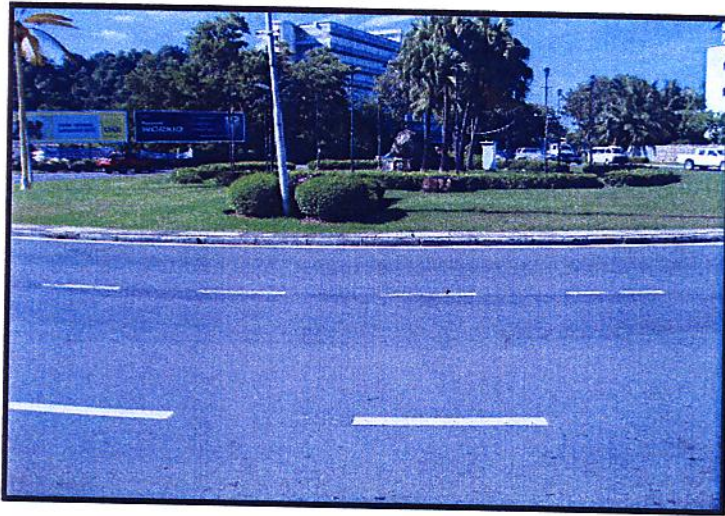


Picture No. 22114.003

**AFTER**

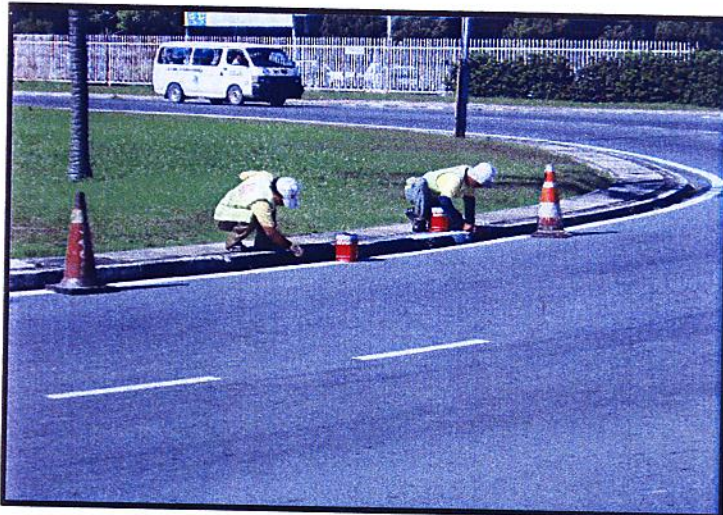
DISTRICT : PENAMPANG  
ROUTE NO : 01 JALAN KOTA KINABALU-SINDUMIN  
LOCATION : KM1.550

### R04 ROAD FURNITURE



Picture No: 24114.002

**BEFORE**



Picture No: 24114.005

**IN PROGRESS**



Picture No: 24114.016

**AFTER**

DISTRICT : PENAMPANG  
ROUTE NO : 500 JALAN KK-KENINGAU-TENOM  
LOCATION : KM17.200 (RHS)

### R04 ROAD FURNITURE



Picture No. 26114/001

**BEFORE**



Picture No: 26114/002

**IN PROGRESS**

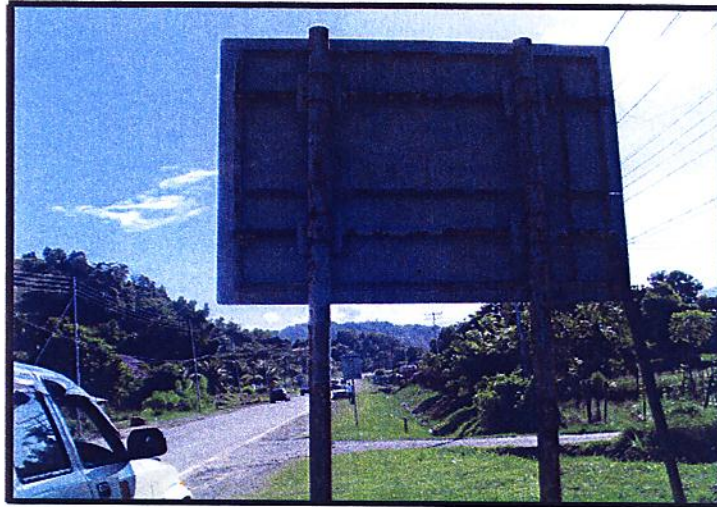


Picture No. 30114.055-444

**AFTER**

DISTRICT : PENAMPANG  
ROUTE NO : 500 JALAN KK-KENINGAU-TENOM  
LOCATION : KM12.000 (RHS)

### R04 ROAD FURNITURE



Picture No: 30114/024

**BEFORE**



Picture No: 30114,025

**IN PROGRESS**



Picture No: 30114/027

**AFTER**

DISTRICT : RANAU  
ROUTE NO : 22 JALAN KOTA KINABALU - SANDAKAN  
LOCATION : CH 49.010 (KM 85.610) - LHS

### R04 ROAD FURNITURE



Film Batch No: RNU-PI010116

**BEFORE**



Film Batch No: RNU-PI010117

**IN PROGRESS**

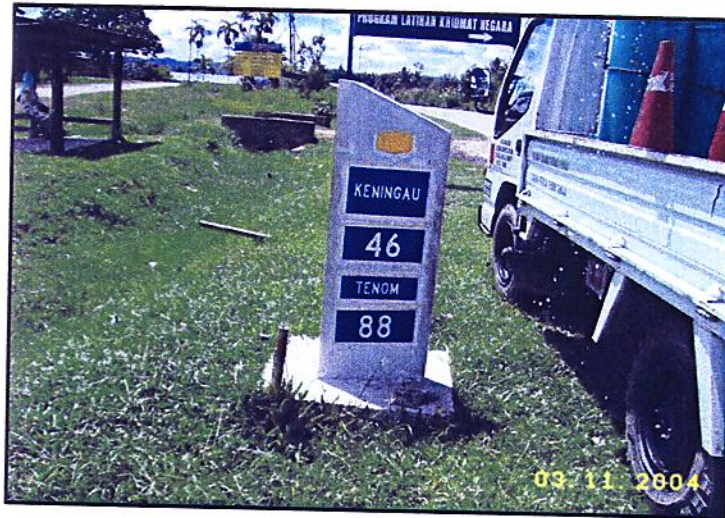


Film Batch No: RNU-PI010118

**AFTER**

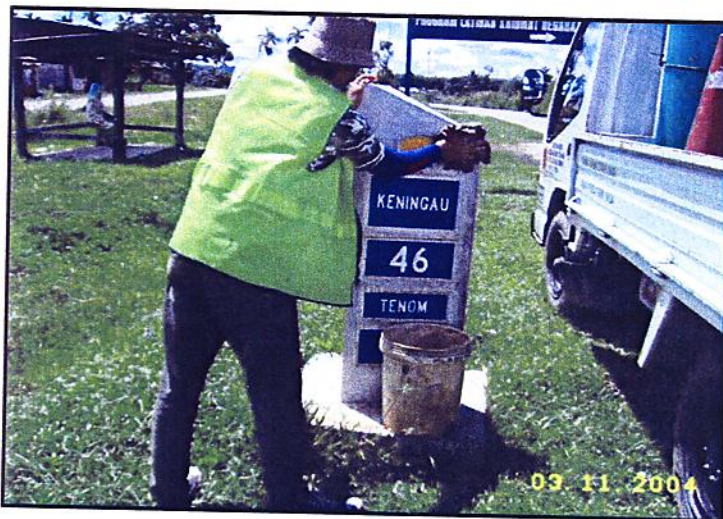
DISTRICT : TENOM  
ROUTE NO : 500 JALAN KOTA KINABALU-KENINGAU-TENOM  
LOCATION : CHI64.100 (LHS)

### R04 ROAD FURNITURE



Film Batch No: R04-1104-04

**BEFORE**



Film Batch No: R04-1104-05

**IN PROGRESS**

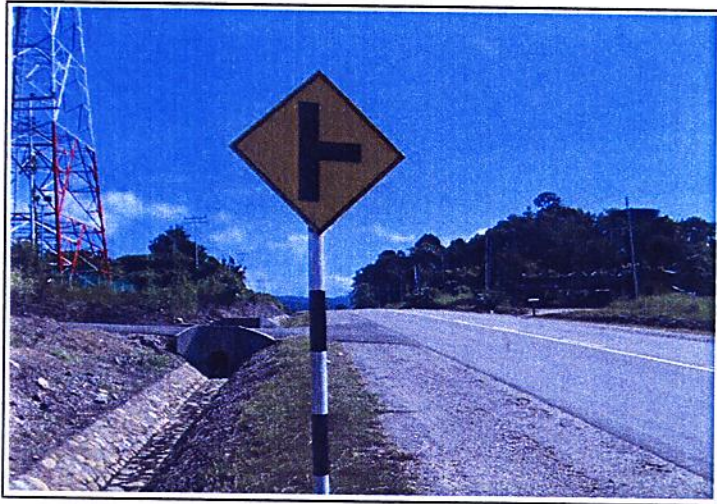


Film Batch No: R04-1104-06

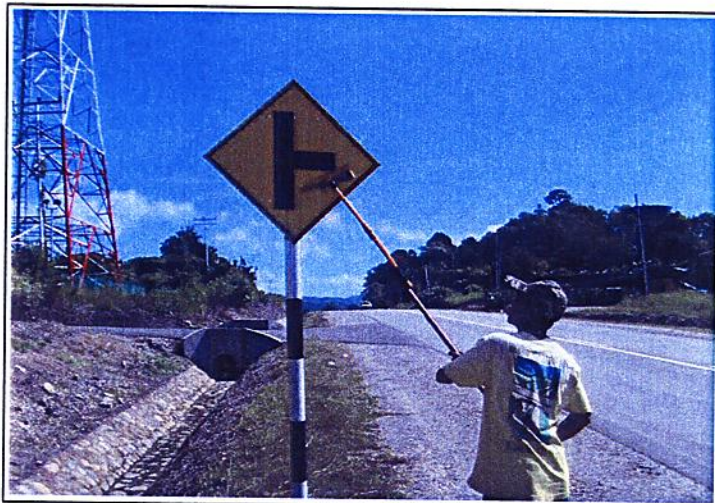
**AFTER**

DISTRICT : SIPITANG  
ROUTE NO : 01 JALAN KOTA KINABALU - SINDUMIN  
LOCATION : CH136.078 (KMI37.838) - RHS

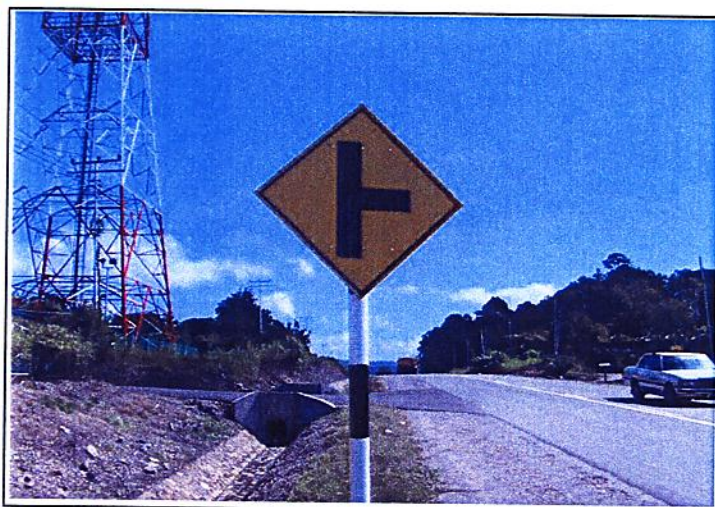
### R04 ROAD FURNITURE



BEFORE



IN PROGRESS



AFTER

**R 05**

**PENYENGGARAAN  
JAMBATAN & PEMBENTUNG  
(BRIDGES & CULVERTS)**

DISTRICT : KOTA BELUD  
ROUTE NO : 01-JALAN KOTA KINABALU-KUDAT  
LOCATION : CH 85.830

### R05 BRIDGE



Film Batch No: PB190011

**BEFORE**



Film Batch No: PB190013

**IN PROGRESS**



Film Batch No: PB190015

**AFTER**

DISTRICT : KOTA KINABALU  
ROUTE NO : 01 JALAN KOTA KINABALU-KUDAT  
LOCATION : CH0.300

### R05 CULVERT



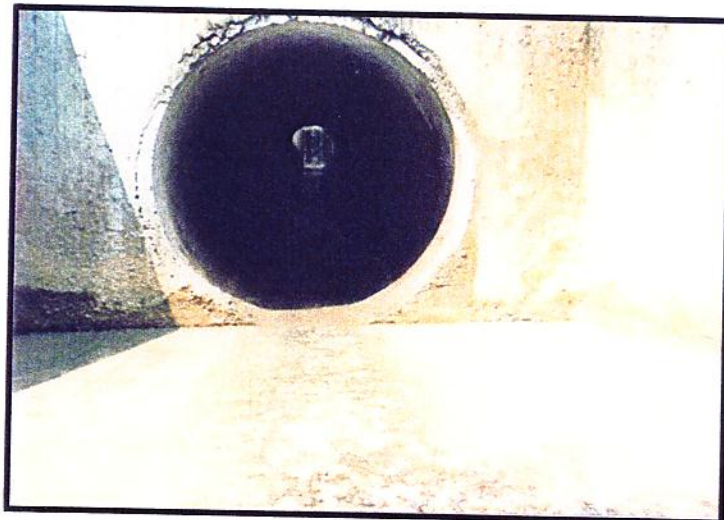
Picture No: 22114/14018

**BEFORE**



Picture No. 22114.14019

**IN PROGRESS**



Picture No. 22114 14013

**AFTER**

DISTRICT : PENAMPANG  
ROUTE NO : 501 JALAN KK-PENAMPANG-LOK KAWI  
LOCATION : KM8.100 (RHS)

### R05 BRIDGE



Picture No: 30114/028

**BEFORE**



Picture No: 30114-030

**IN PROGRESS**



Picture No: 30114,029-222

**AFTER**

DISTRICT : PENAMPANG  
ROUTE NO : 500 JALAN KK-KENINGAU-TENOM  
LOCATION : CH12.543

### R05 CULVERT



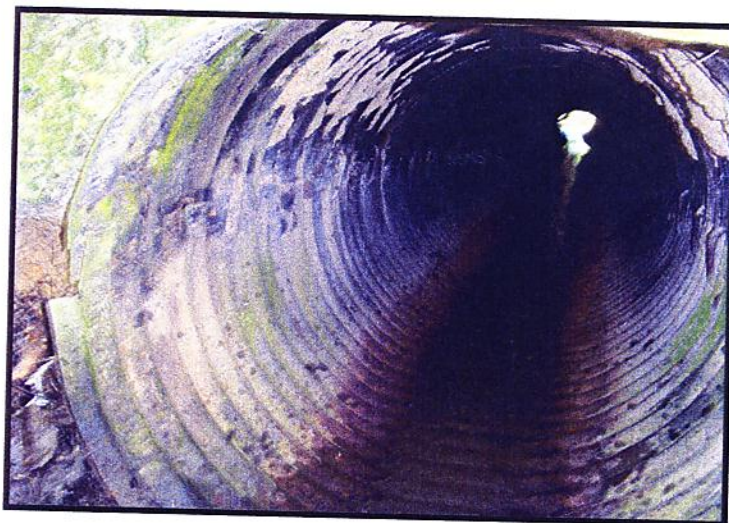
Picture No: 24114.019

**BEFORE**



Picture No: 24114.021

**IN PROGRESS**



Picture No: 24114.022

**AFTER**

DISTRICT : PENAMPANG  
ROUTE NO : 500 JALAN KK-KENINGAU-TENOM  
LOCATION : CH15.107

### R05 CULVERT



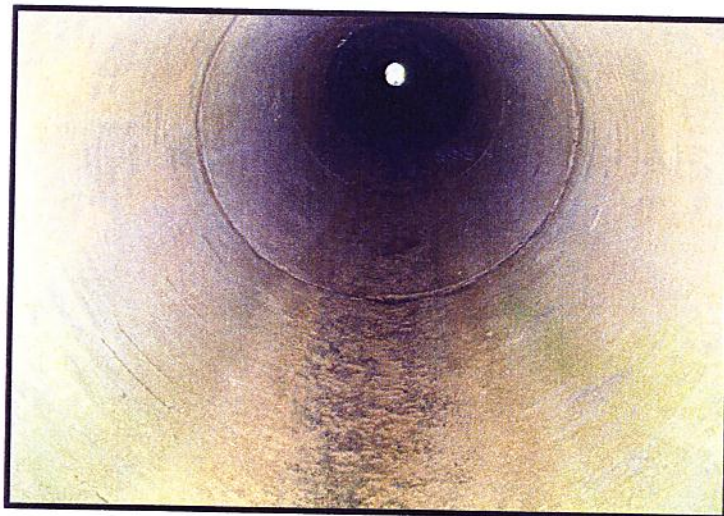
Picture No: 24114.024

**BEFORE**



Picture No. 24114.025

**IN PROGRESS**



Picture No: 24114.023

**AFTER**

DISTRICT : RANAU  
ROUTE NO : 22 JALAN KOTA KINABALU - SANDAKAN  
LOCATION : CH 86.100 (KM 122.700)

### R05 CULVERT



Film Batch No. RNU-IMG\_0324

**BEFORE**



Film Batch No: RNU-IMG\_0325

**IN PROGRESS**

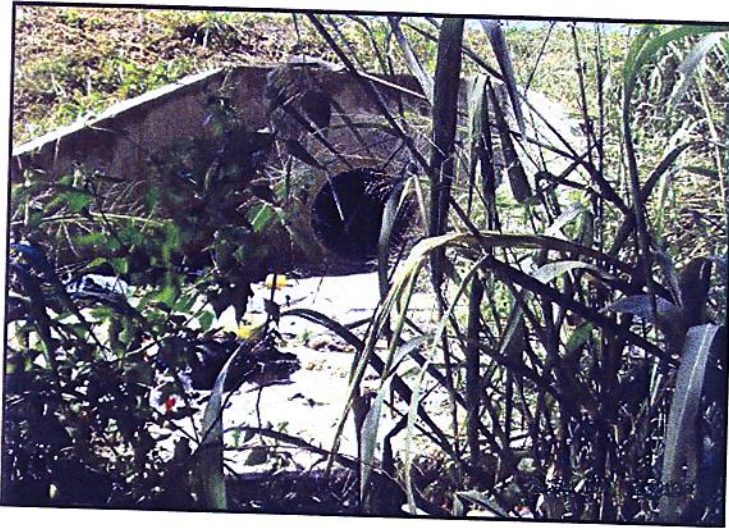


Film Batch No: RNU-IMG\_0328

**AFTER**

DISTRICT : KENINGAU  
ROUTE NO : 500 JALAN KOTA KINABALU-KENINGAU-TENOM  
LOCATION : CH 124.950

### R05 BRIDGES & CULVERTS



Film Batch No: R05-1104 -01

**BEFORE**



Film Batch No: R05-1104 -02

**AFTER**

DISTRICT : KENINGAU  
ROUTE NO : 500 JALAN KOTA KINABALU-KENINGAU-TENOM  
LOCATION : CH122.600

### R05 BRIDGES & CULVERTS



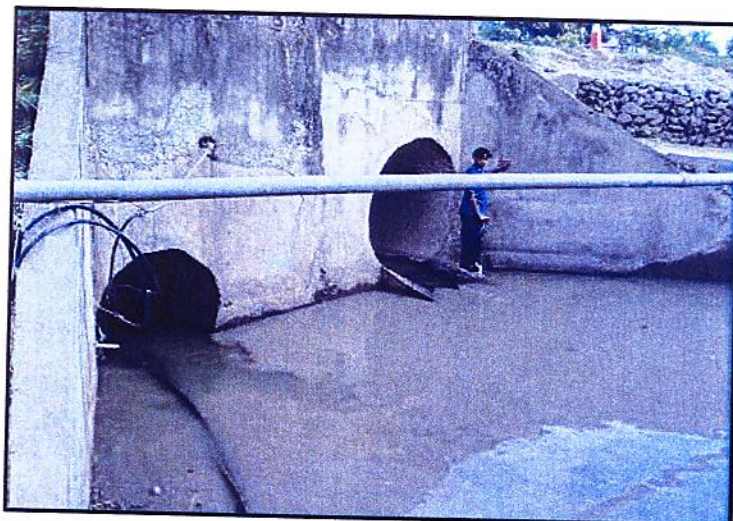
Film Batch No: R05-1104-03

**BEFORE**



Film Batch No. R05-1104-04

**IN PROGRESS**



Film Batch No. R05-1104-05

**AFTER**

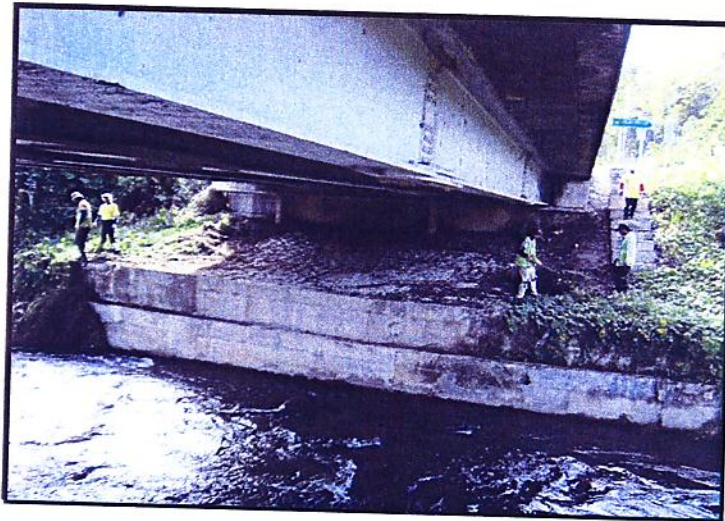
DISTRICT : TAMBUNAN  
ROUTE NO : 500 JALAN KOTA KINABALU-KENINGAU-TENOM  
LOCATION : CH81.950

### R05 BRIDGES & CULVERTS



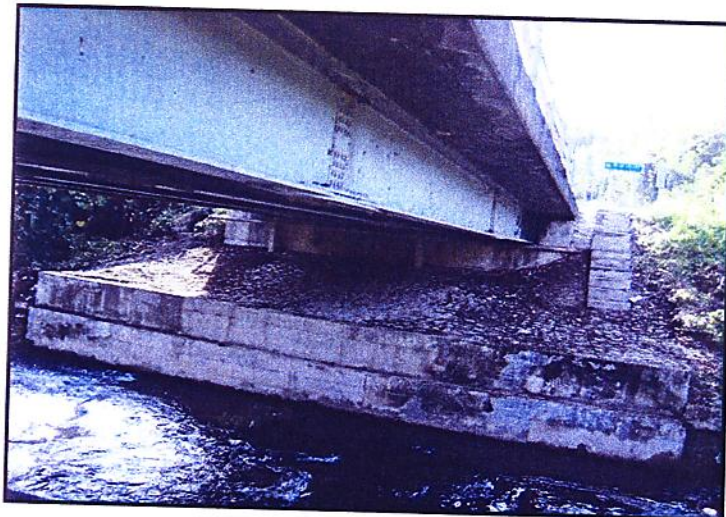
Film Batch No: R05-1104-06

**BEFORE**



Film Batch No R05-1104-07

**IN PROGRESS**

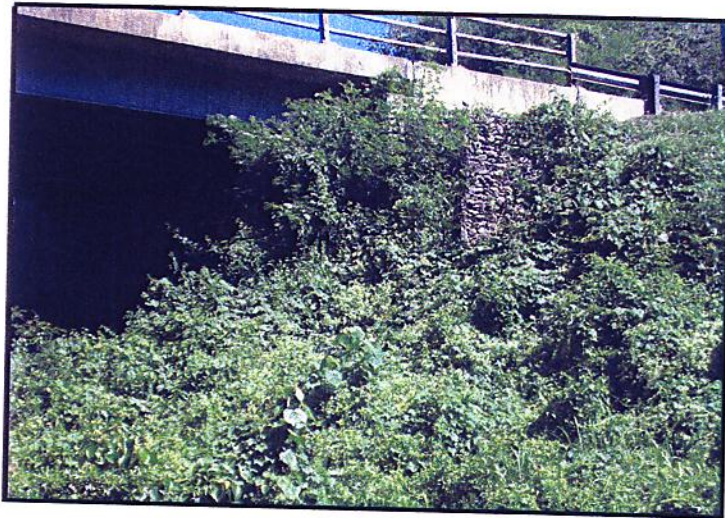


Film Batch No: R05-1104-08

**AFTER**

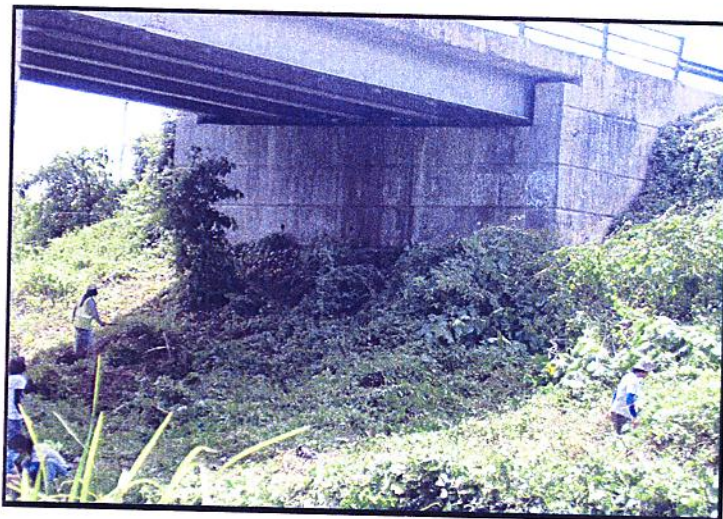
DISTRICT : KENINGAU  
ROUTE NO : 500 JALAN KOTA KINABALU-KENINGAU-TENOM  
LOCATION : CH100.392

### R05 BRIDGES & CULVERTS



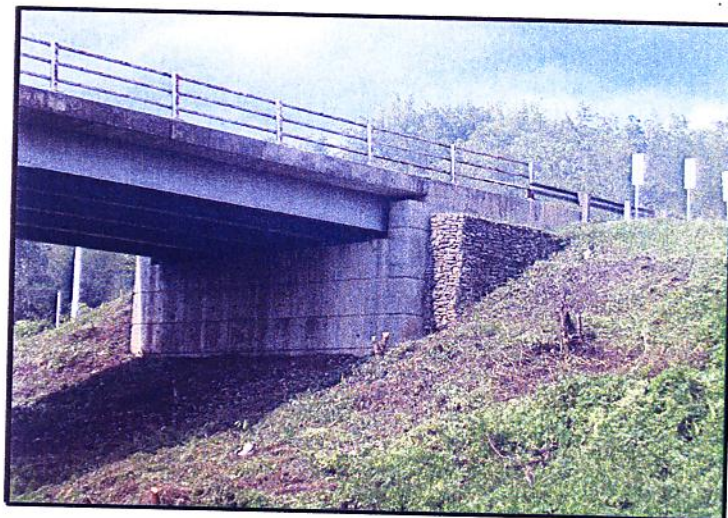
Film Batch No: R05-1104-12

**BEFORE**



Film Batch No R05-1104-13

**IN PROGRESS**



Film Batch No: R05-1104-14

**AFTER**

DISTRICT : BEAUFORT  
ROUTE NO : 01 JALAN KOTA KINABALU - SINDUMIN  
LOCATION : CH8.048 (KM8.048)

### R05 CULVERT



**BEFORE**



**IN PROGRESS**



**AFTER**

DISTRICT : SIPITANG  
ROUTE NO : 01 JALAN KOTA KINABALU - SINDUMIN  
LOCATION : CH121.349 (KM123.109)

### R05 CULVERT



**BEFORE**



**IN PROGRESS**



**AFTER**

**R 07**

**PENYENGGARAAN  
LONGKANG  
(DRAINAGE)**

DISTRICT : KOTA BELUD  
ROUTE NO : 01-JALAN KOTA KINABALU-KUDAT  
LOCATION : CH 77.870

### R07 DRAINAGE



Film Batch No: PB080014

**BEFORE**



Film Batch No: PB080015

**IN PROGRESS**



Film Batch No: PB080019

**AFTER**

DISTRICT : KUDAT  
ROUTE NO : 01-JALAN KOTA KINABALU-KUDAT  
LOCATION : CH 182.832

### R07 DRAINAGE



Film Batch No: PB230016

**BEFORE**



Film Batch No: PB230017

**IN PROGRESS**



Film Batch No: PB230019

**AFTER**

DISTRICT : KOTA KINABALU  
ROUTE NO : 608 JALAN MASUK KE LAPANGAN TEBANG LAMA  
LOCATION : KM1.800 (LHS)

### R07 DRAINAGE



Picture No: 4114/012

**BEFORE**



Film Batch No. 4114/13

**IN PROGRESS**

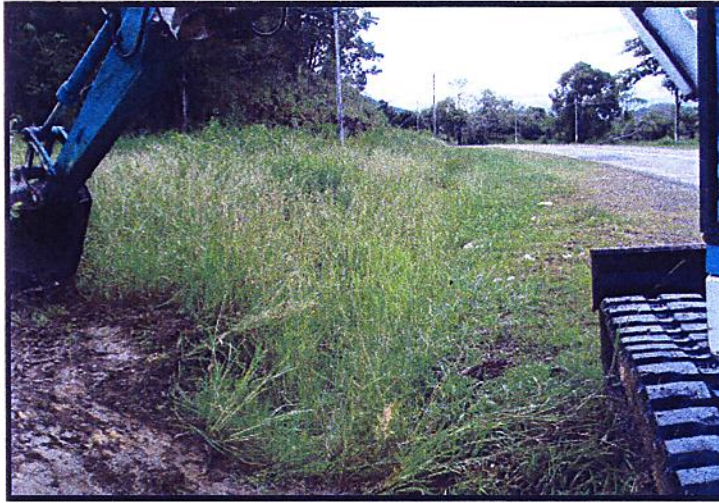


Film Batch No: 4114/14

**AFTER**

DISTRICT : PAPAR  
ROUTE NO : 01 JALAN KOTA KINABALU-SINDUMIN  
LOCATION : CH20.740 (LHS)

### R07 DRAINAGE



Picture No: 17114/001

**BEFORE**



Picture No. 17114/002

**IN PROGRESS**

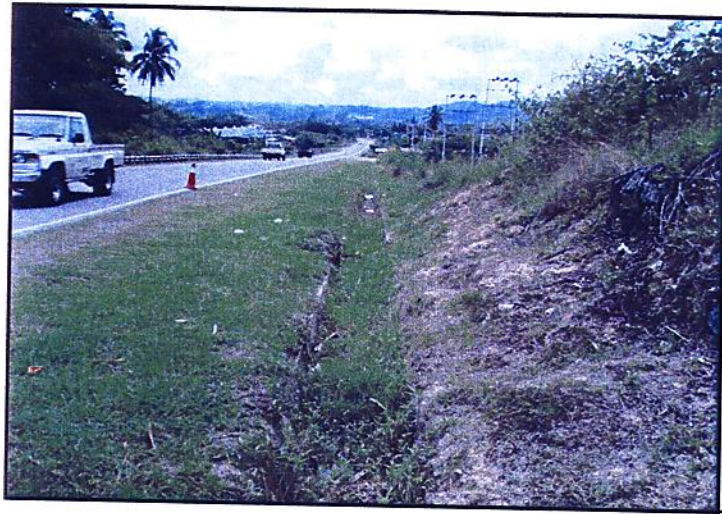


Picture No. 17114/011

**AFTER**

DISTRICT : KENINGAU  
ROUTE NO : 500 JALAN KOTA KINABALU-KENINGAU-TENOM  
LOCATION : CH124.500 - LHS

### R07 DRAINAGE



Film Batch No. R07-1104-04

**BEFORE**



Film Batch No. R07-1104-05

**IN PROGRESS**

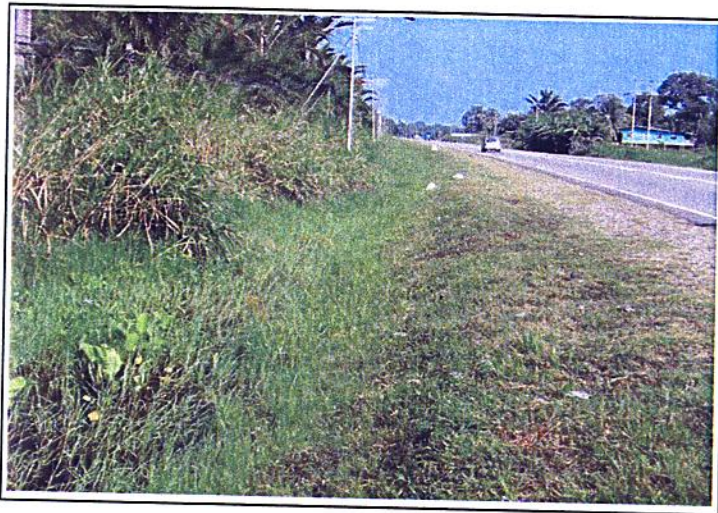


Film Batch No. R07-1104-06

**AFTER**

DISTRICT : BEAUFORT  
ROUTE NO : 502 JALAN BEAUFORT - MENUMBOK  
LOCATION : CH5.800 (KM5.800) - LHS

### R07 DRAINAGE



BEFORE



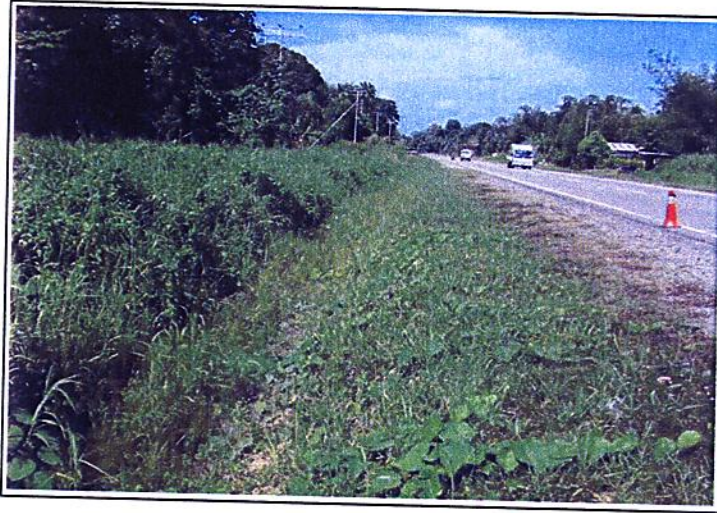
IN PROGRESS



AFTER

DISTRICT : BEAUFORT  
ROUTE NO : 502 JALAN BEAUFORT - MENUMBOK  
LOCATION : CH12.050 (KM12.050) - LHS

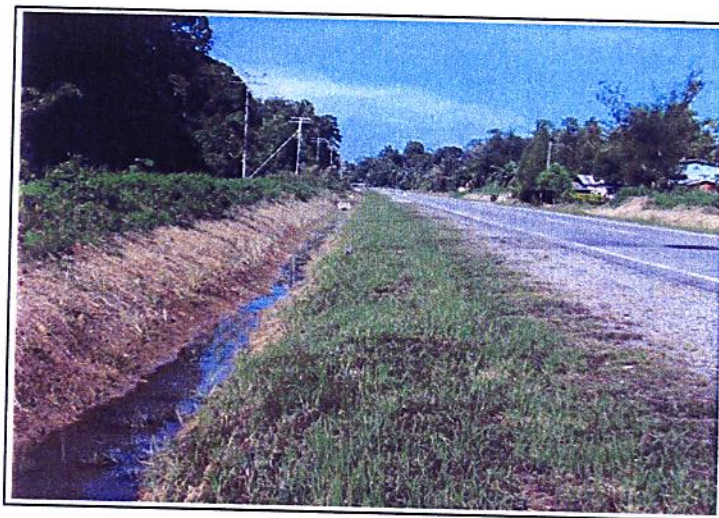
### R07 DRAINAGE



BEFORE



IN PROGRESS



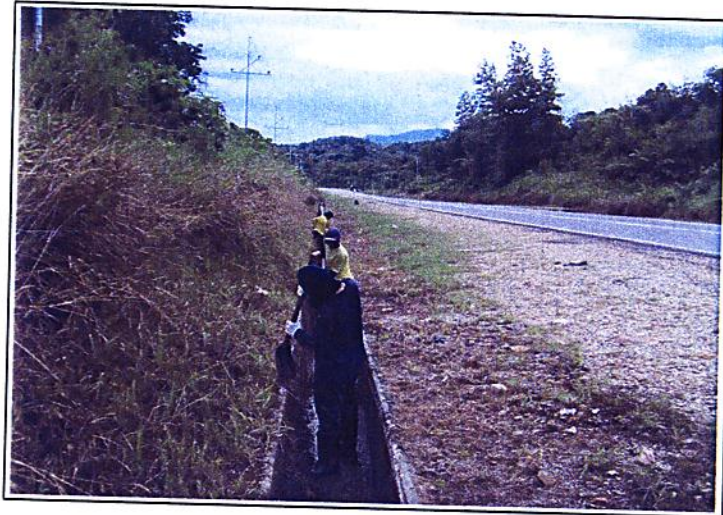
AFTER

DISTRICT : BEAUFORT  
ROUTE NO : 01 JALAN KOTA KINABALU - SINDUMIN  
LOCATION : CH116.750 (KM118.510) - RHS

### R07 DRAINAGE



**BEFORE**



**IN PROGRESS**



**AFTER**

**B**

**PEMERIKSAAN  
RUTIN  
(INSPECTION)**

DISTRICT : KOTA BELUD  
ROUTE NO : 01-JALAN KOTA KINABALU - KUDAT  
LOCATION : CH 76.27

**CARCASSES**



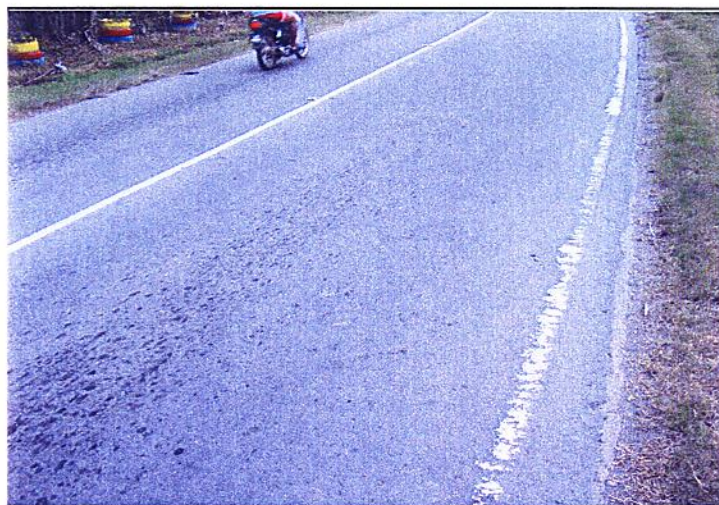
Film Batch No: PA290039

**BEFORE**



Film Batch No: PA290040

**IN PROGRESS**



Film Batch No: PA290041

**AFTER**

DISTRICT : RANAU  
ROUTE NO : 22 JALAN KOTA KINABALU - SANDAKAN  
LOCATION : CH 72.400 (KM 109.000) - RHS

### ROUTINE INSPECTION



Film Batch No: RNU-PI010166

**BEFORE**

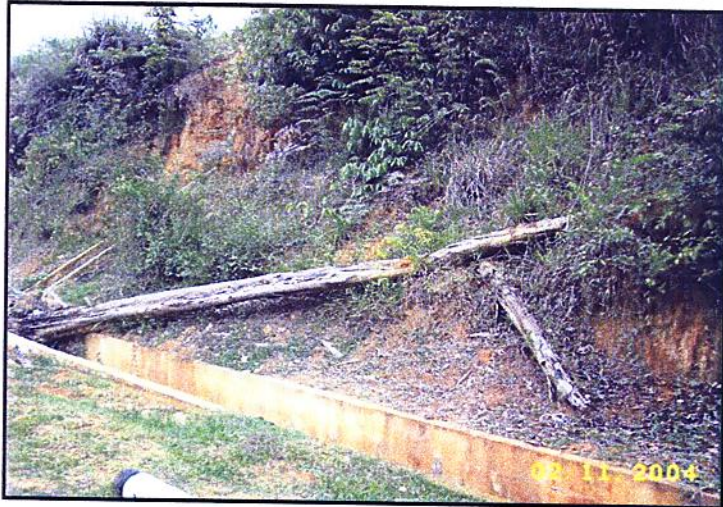


Film Batch No: RNU-PI010167

**AFTER**

DISTRICT : TAMBUNAN  
ROUTE NO : 500 JALAN KOTA KINABALU-KENINGAU-TENOM  
LOCATION : CH73.800 - LHS

**B : INSPECTION**



Film Batch No. B-1104-01

**BEFORE**



Film Batch No: B-1104-02

**IN PROGRESS**



Film Batch No. B-1104-03

**AFTER**

DISTRICT : TAMBUNAN  
ROUTE NO : 500 JALAN KOTA KINABALU-KENINGAU-TENOM  
LOCATION : CH51.000 - RHS

**B : INSPECTION**



Film Batch No: B-1104-01

**BEFORE**



Film Batch No: B-1104-02

**IN PROGRESS**

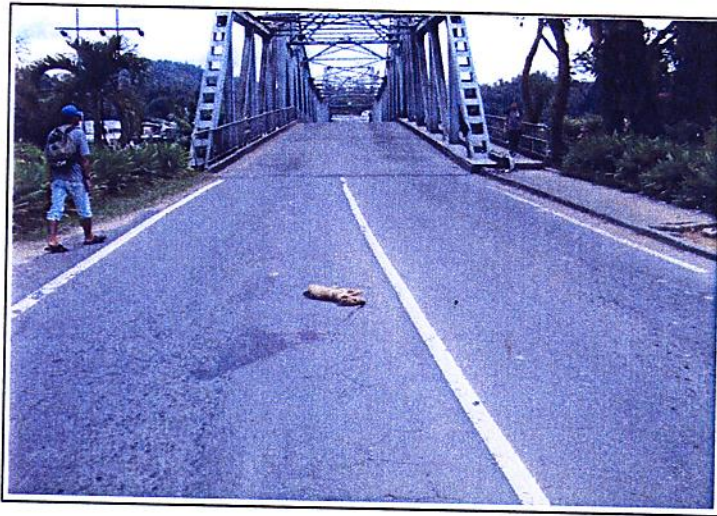


Film Batch No B-1104-03

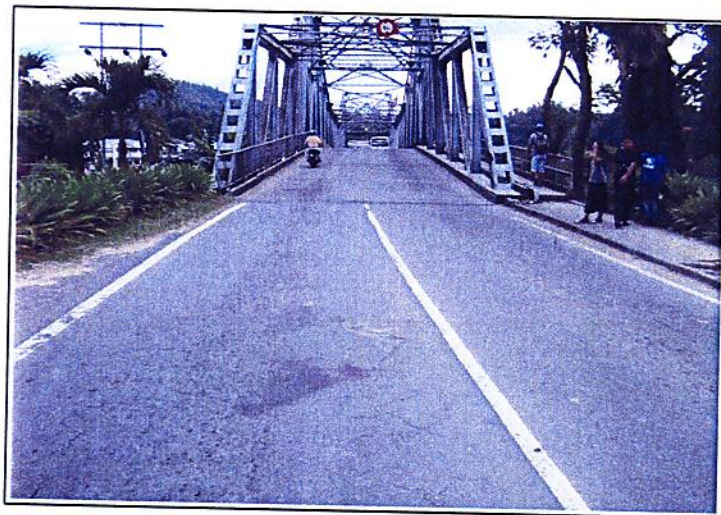
**AFTER**

DISTRICT : BEAUFORT  
ROUTE NO : 01 JALAN KOTA KINABALU - SINDUMIN  
LOCATION : CH95.548 (KM97.308) - LHS

**(B) ROUTINE INSPECTION**



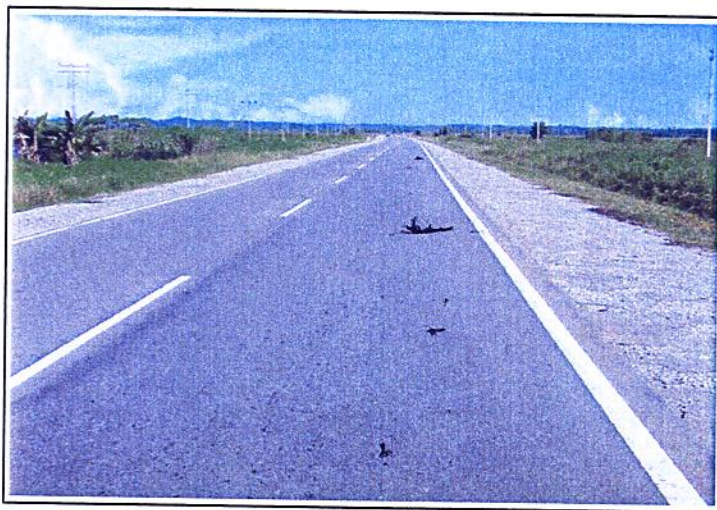
**BEFORE**



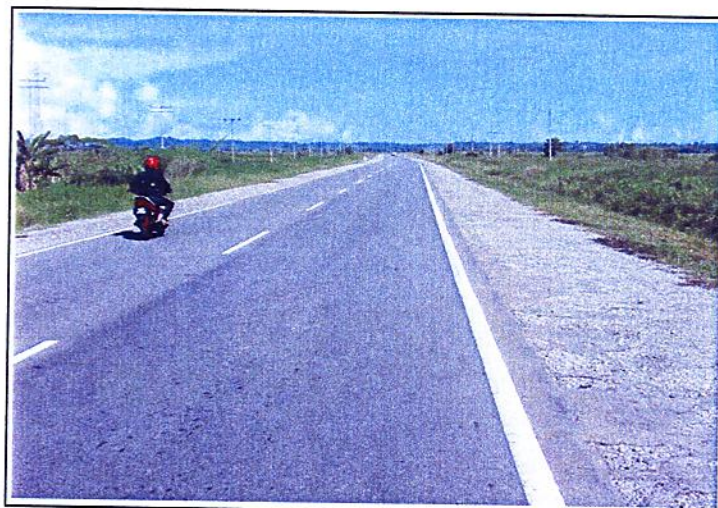
**AFTER**

DISTRICT : KUALA PENYU  
ROUTE NO : 502 JALAN BEAUFORT - MENUK  
LOCATION : CH23.810 (KM23.810) - RHS

**(B) ROUTINE INSPECTION**



**BEFORE**



**AFTER**