

PENSWASTAAN PENYENGGARAAN  
JALAN-JALAN PERSEKUTUAN DI SABAH  
(PANTAI BARAT & PENDALAMAN)



THE GOVERNMENT OF MALAYSIA

**LAPORAN KEMAJUAN BULANAN  
NO. 14**

OCTOBER 2004



*Jabatan Kerja Raya, Negeri Sabah*

*Concessionaire : Lintasan Resources Sdn. Bhd. 566483-H*

# LINTASAN RESOURCES SDN. BHD.

PENSWASTAAN PENYENGGARAAN JALAN-JALAN  
PERSEKUTUAN DI SABAH (PANTAI BARAT & PENDALAMAN)

---

## LAPORAN KEMAJUAN BULANAN OCTOBER 2004

---

### ISI KANDUNGAN

<u>Bil:</u>	<u>PERKARA</u>
1.	Laporan Eksekutif Projek
2.	Carta Organisasi Syarikat
3.	Lokasi Jalan Persekutuan
4.	Ringkasan Laporan Kemajuan Bulanan
5.	R 01 - Penyenggaraan Permukaan Jalan
6.	R 02 - Penyenggaraan Bahu Jalan
7.	R 03 - Pemetongan Rumput
8.	R 04 - Penyenggaraan Perabot Jalan
9.	R 05 - Penyenggaraan Jambatan dan Pembentung
10.	R 07 - Penyenggaraan Longkang
11.	B - Pemeriksaan Rutin
12.	Kerja-Kerja Kecemasan
13.	Kerja-Kerja Berkala

**LAPORAN  
EKSEKUTIF PROJEK**

## LAPORAN EKSEKUTIF PROJEK

---

<b>TAJUK KONTRAK :</b>	PENSWASTAAN PENYENGGARAAN JALAN-JALAN PERSEKUTUAN DI SABAH (PANTAI BARAT & PENDALAMAN)
<b>KLIEN :</b>	JABATAN KERJA RAYA, SABAH
<b>SYARIKAT :</b>	LINTASAN RESOURCES SDN. BHD. Lot 1, Block A, Ground Floor, Wisma TP Mile 1 ½, Tuaran Road 88400 Kota Kinabalu, Sabah, Malaysia.
<b>TEMPOH :</b>	15 TAHUN
<b>TARIKH MULA :</b>	01hb September 2003
<b>TARIKH TAMAT :</b>	31hb August 2018
<b>KAWASAN :</b>	PANTAI BARAT & PENDALAMAN
<b>JALAN TERLIBAT :</b>	Semua Jalan-Jalan Persekutuan Yang Diwartakan Dibawah Akta Jalan Persekutuan 1959
<b>PANJANG JALAN :</b>	764.85 Kilometer
<b>KATEGORI JALAN :</b>	a) Jalan Protocol b) Jalan Utama c) Jalan Sekunder
<b>SKOP KERJA :</b>	a) Penyenggaraan Rutin b) Kerja-Kerja Kecemasan

### **RINGKASAN LAPORAN :**

#### ROUTINE MAINTENANCE

The constant rain in October caused faster deterioration to road surfaces especially on stretches of roads that are known to be weak and susceptible to water. Consequently, more potholes were formed and needed more attention and patching notably along Jalan Kota Kinabalu-Kudat between KM17.60 and KM30.40. Other routine maintenance activities continued as per schedule.

#### PERIODIC MAINTENANCE

The Monsoon weather during the month of October caused some concern and disruption to pavement resurfacing works. Nevertheless, with the introduction of night work, the overall progress of the 2004 Periodic Work is still kept within schedule. As at 31<sup>st</sup> October, 15 of the 17 packages have been completed equating to an overall progress of 75% of the year's Periodic Programme. The remaining work continues to progress and is anticipated to be completed well before the end of November.

The 2005 Periodic Maintenance Programme is being keenly awaited. Additional funds are expected to be given as a way of strengthening and consolidating the road condition of some weak stretches.

EMERGENCY WORK

Despite the Monsoon season, only minor emergency work occurred. Ranging poles on known flood prone areas have been erected for the information of the public in the event of flood.

31/10/2004

**CARTA  
ORGANISASI SYARIKAT**



**LOKASI  
JALAN PERSEKUTUAN  
DI  
SABAH  
(PANTAI BARAT & PENDALAMAN)**

**RINGKASAN  
LAPORAN KEMAJUAN  
BULANAN**

**KERJA-KERJA RUTIN**  
(ROUTINE MAINTENANCE)

**R 01**

**PENYENGGARAAN  
PERMUKAAN JALAN  
(POTHOLE PATCHING)**

DISTRICT : KOTA BELUD  
ROUTE NO : 01-JALAN KOTA KINABALU-KUDAT  
LOCATION : CH 70.790

**R01 PAVEMENT**



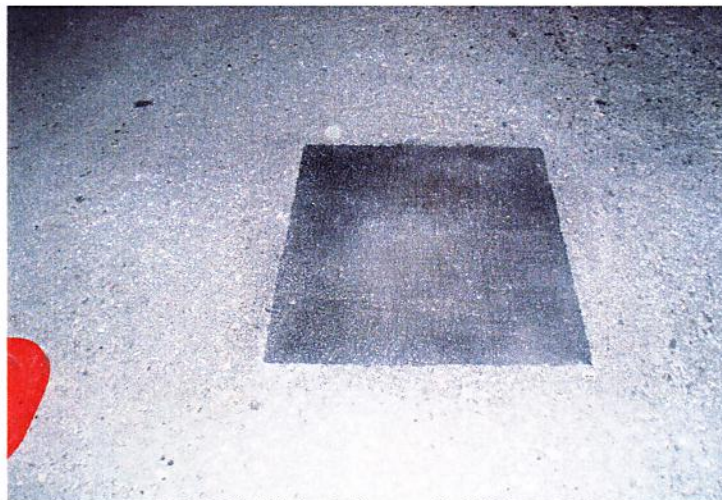
Film Batch No: P1010039

**BEFORE**



Film Batch No: P1010040

**IN PROGRESS**



Film Batch No: P1010042

**AFTER**

DISTRICT : KOTA BELUD  
ROUTE NO : 01-JALAN KOTA KINABALU-KUDAT  
LOCATION : CH 70.740

### R01 PAVEMENT



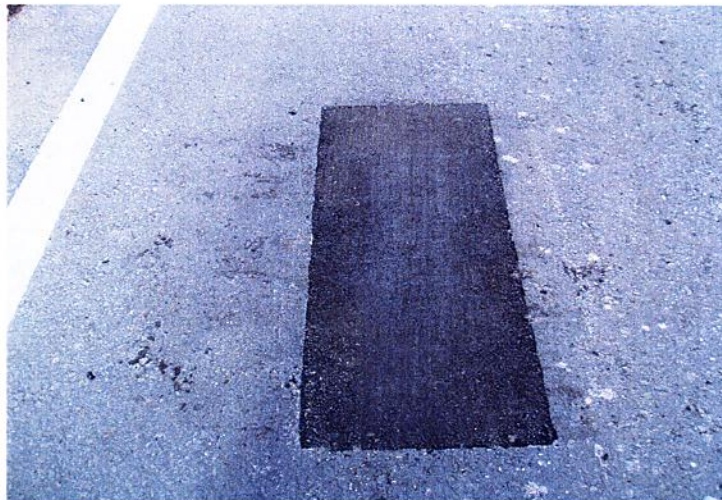
Film Batch No: P1010034

**BEFORE**



Film Batch No: P1010036

**IN PROGRESS**



Film Batch No: P1010038

**AFTER**

DISTRICT : TAMBUNAN  
ROUTE NO : 500 JALAN KOTA KINABALU-KENINGAU-TENOM  
LOCATION : CH97.100 (RHS)

### R01 PAVEMENT



Film Batch No: R01-2210-028

**BEFORE**



Film Batch No: R01-2210-032

**IN PROGRESS**

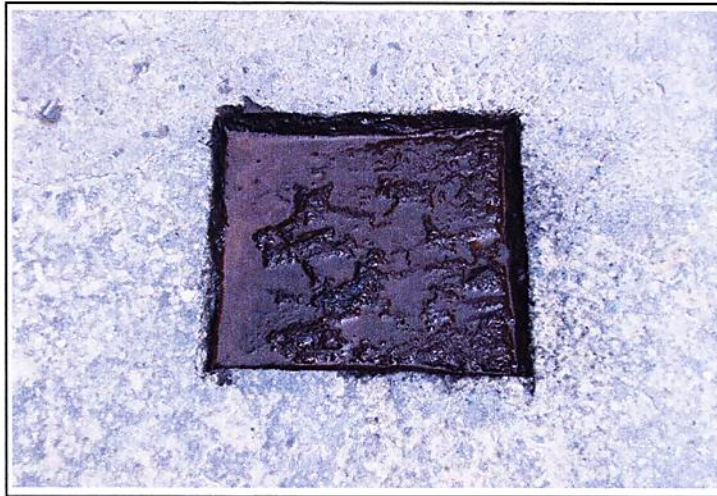


Film Batch No: R01-2210-037

**AFTER**

DISTRICT : SIPITANG  
ROUTE NO : 01 JALAN KOTA KINABALU - SINDUMIN  
LOCATION : CH139.584 (KM141.344) - RHS

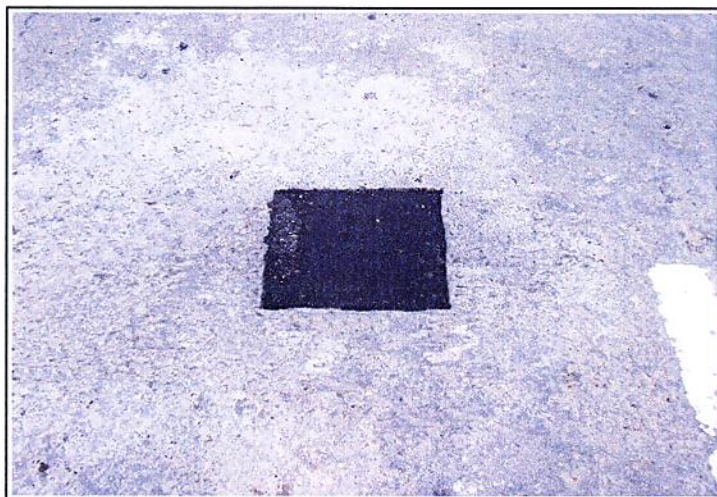
**R01 PAVEMENT**



**BEFORE**



**IN PROGRESS**



**AFTER**

DISTRICT : KUALA PENYU  
ROUTE NO : 502 JALAN BEAUFORT - MENUMBOK  
LOCATION : CH58.200 (KM58.200) - RHS

**R01 PAVEMENT**



**BEFORE**



**IN PROGRESS**



**AFTER**

LINTASAN RESOURCES SDN BHD  
**PAVEMENT REPAIR (POTHOLE PATCHING)**  
GRAND SUMMARY

MONTH: OCTOBER 2004

R01 - PAVEMENT REPAIR					
DISTRICT	ROUTE NO	ROAD NAME	PREMIX FOR POTHOLE		
			Previous Mth	Current Mth	Cuumulative
			(ton)	(Ton)	(Ton)
Kota Belud	01	Jalan Kota Kinabalu-Kudat	192 20	15 63	207 83
Kota Marudu	01	Jalan Kota Kinabalu-Kudat	11 02	0 00	11 02
Kudat	01	Jalan Kota Kinabalu-Kudat	10 12	0 68	10 80
Tuaran	01	Jalan Kota Kinabalu-Kudat	453 08	30 49	483 57
	22	Jalan Kota Kinabalu-Sandakan	99 90	2 98	102 88
	503	Jalan Berungis-Kota Belud	16 79	0 00	16 79
Kota Kinabalu	01	Jalan Kota Kinabalu-Kudat	538 31	39 86	578 17
	01	Jalan Kota Kinabalu-Sindumin	14 75	2 77	17 52
	606	Jalan Susur Sepangar Bay	49 41	6 23	55 64
	607	Jalan Masuk Ke Pelabuhan Baru	2 42	0 00	2 42
	608	Jalan Masuk ke Lapangan Terbang Lama	8 65	0 62	9 27
Penampang	01	Jalan Kota Kinabalu-Sindumin	20 27	5 70	25 97
	500	Jalan Kota Kinabalu-Keningau-Tenom	291 01	33 32	324 33
	501	Jalan Kota Kinabalu-Penampang-Lokkawi	148 50	8 47	156 97
Papar	01	Jalan Kota Kinabalu-Sindumin	421 93	24 68	446 61
Ranau	22	Jalan Kota Kinabalu-Sandakan	538 87	68 29	607 16
Tambunan	500	Jalan Kota Kinabalu-Keningau-Tenom	92 69	2 97	95 66
Keningau	500	Jalan Kota Kinabalu-Keningau-Tenom	5 35	1 42	6 77
Tenom	500	Jalan Kota Kinabalu-Keningau-Tenom	5 13	0 74	5 87
Beaufort	01	Jalan Kota Kinabalu-Sindumin	43 21	0 60	43 81
	502	Jalan Beaufort-Menumbok	39 27	0 00	39 27
Sipitang	01	Jalan Kota Kinabalu-Sindumin	30 99	0 50	31 49
Kuala Penyu	502	Jalan Beaufort-Menumbok	16 06	0 35	16 41
<b>TOTAL</b>			<b>3,049.93</b>	<b>246.30</b>	<b>3,296.23</b>

**LINTASAN RESOURCES SDN BHD** (566483-H)  
 PRIVATISATION OF WEST COAST SABAH FEDERAL ROADS MAINTENANCE

SUMMARY FOR R01 - POTHOLE PATCHING RECORD

Ending Period : 31 October 2004

ITEM	DISTRICT	ROUTE NO.	ROADNAME	AREA (m <sup>2</sup> )		PREMIX QUANTITY (TON)			INVENTORY CARRIAGEWAY ESTIMATE QTY (m <sup>2</sup> )	
				PREVIOUS MONTH	CURRENT MONTH	CUM. MONTH	PREVIOUS MONTH	CURRENT MONTH		CUM. MONTH
1	KOTA BELUD	01	Jalan Kota Kinabalu - Kudat	1,591.02	130.11	1,721.13	192.20	15.63	207.83	313,971 000
2	KOTA MARUDU	01	Jalan Kota Kinabalu - Kudat	91.15	-	91.15	11.02	-	11.02	180,993.00
3	KUDAT	01	Jalan Kota Kinabalu - Kudat	84.25	5.66	89.91	10.12	0.68	10.80	308,338 00
<b>TOTAL</b>				<b>1,766.42</b>	<b>135.77</b>	<b>1,902.19</b>	<b>213.34</b>	<b>16.31</b>	<b>229.65</b>	<b>803,302.00</b>

**LINTASAN RESOURCES SDN BHD** (566483-H)  
**PRIVATISATION OF WEST COAST SABAH FEDERAL ROADS MAINTENANCE**

SUMMARY FOR R01 - POTHoles PATCHING RECORD

Ending Period : 31<sup>th</sup> October 2004

ITEM	DISTRICT	ROUTE NO.	ROAD NAME	AREA ( m <sup>2</sup> )			PREMIX QUANTITY ( TON )		
				PREVIOUS MONTH	CURRENT MONTH	CUM. MONTH	PREVIOUS MONTH	CURRENT MONTH	CUM. MONTH
<b>WEST COAST (NORTH)</b>									
1	Kota Kinabalu	01	Jalan Kota Kinabalu - Kudat	3,820.34	309.59	4,129.93	538.31	39.86	578.17
2	Tuaran	01	Jalan Kota Kinabalu - Kudat	3,151.36	215.25	3,366.61	453.08	30.49	483.57
3	Tuaran	22	Jalan Kota Kinabalu - Sandakan	731.62	24.75	756.37	99.90	2.98	102.88
4	Tuaran	503	Jalan Berungis - Kota Belud	106.11	-	106.11	16.79	-	16.79
5	Kota Kinabalu	606	Jalan Susur Sepangar Bay	282.21	43.34	325.55	49.41	6.23	55.64
6	Kota Kinabalu	607	Jalan Masuk ke Pelabuhan Baru, K K	16.94	-	16.94	2.42	-	2.42
<b>TOTAL:</b>				<b>8,108.58</b>	<b>592.93</b>	<b>8,701.51</b>	<b>1,159.91</b>	<b>79.56</b>	<b>1,239.47</b>
<b>WEST COAST (SOUTH)</b>									
1	Kota Kinabalu	01	Jalan Kota Kinabalu - Sindumin	98.57	22.57	121.14	14.75	2.77	17.52
2	Penampang	01	Jalan Kota Kinabalu - Sindumin	163.64	43.64	207.28	20.27	5.70	25.97
3	Papar	01	Jalan Kota Kinabalu - Sindumin	3,102.94	182.84	3,285.78	421.93	24.68	446.61
4	Penampang	500	Jalan Kota Kinabalu - Keningau - Tenom	1,847.06	165.23	2,012.29	291.01	33.32	324.33
5	Penampang	501	Jalan Kota Kinabalu - Penampang - Lok Kawi	938.21	48.99	987.20	148.50	8.47	156.97
6	Kota Kinabalu	608	Jalan masuk ke Lapangan Terbang Lama, K K	66.89	3.42	70.31	8.65	0.62	9.27
<b>TOTAL:</b>				<b>6,217.31</b>	<b>466.69</b>	<b>6,684.00</b>	<b>905.11</b>	<b>75.56</b>	<b>980.67</b>
<b>TOTAL FOR ( NORTH + SOUTH ) =</b>				<b>14,325.89</b>	<b>1,059.62</b>	<b>15,385.51</b>	<b>2,065.02</b>	<b>155.12</b>	<b>2,220.14</b>

**LINTASAN RESOURCES SDN BHD** (566483-H)  
 PRIVATISATION OF WEST COAST SABAH FEDERAL ROADS MAINTENANCE

SUMMARY FOR R01 - POTHOLE PATCHING RECORD

Ending Period : 31st October 2004

ITEM	DISTRICT	ROUTE NO.	ROADNAME	AREA ( m <sup>2</sup> )		PREMIX QUANTITY ( TON )		
				PREVIOUS MONTH	CURRENT MONTH	PREVIOUS MONTH	CURRENT MONTH	CUM. MONTH
1	Ranau	22	Jalan Kota Kinabalu - Sandakan	2,602.65	341.54	538.87	68.29	607.16
<b>TOTAL</b>				<b>2,602.65</b>	<b>341.54</b>	<b>538.87</b>	<b>68.29</b>	<b>607.16</b>

**LINTASAN RESOURCES SDN BHD** (566483-H)  
 PRIVATISATION OF WEST COAST SABAH FEDERAL ROADS MAINTENANCE

SUMMARY FOR R01 - POTHOLES PATCHING RECORD

Ending Period : 30 OCTOBER 2004

ITEM	DISTRICT	ROUTE NO.	ROADNAME	AREA ( m <sup>2</sup> )			PREMIX QUANTITY ( TON )			INVENTORY CARRIAGEWAY ESTIMATE QTY (m2)
				PREVIOUS MONTH	CURRENT MONTH	CUM. MONTH	PREVIOUS MONTH	CURRENT MONTH	CUM. MONTH	
1	Tambunan	500	Jalan Kota Kinabalu - Keningau - Tenom	687.91	20.04	707.95	92.69	2.97	95.66	398,552.47
2	Keningau	500	Jalan Kota Kinabalu - Keningau - Tenom	43.44	8.97	52.41	5.35	1.42	6.77	278,055.67
3	Tenom	500	Jalan Kota Kinabalu - Keningau - Tenom	48.78	5.98	54.76	5.13	0.74	5.87	179,227.77
<b>TOTAL</b>				<b>780.14</b>	<b>34.99</b>	<b>815.13</b>	<b>103.18</b>	<b>5.13</b>	<b>108.31</b>	<b>855,835.91</b>

**LINTASAN RESOURCES SDN BHD** (566483-H)  
 PRIVATISATION OF WEST COAST SABAH FEDERAL ROADS MAINTENANCE

SUMMARY FOR R01 - POTHOLE PATCHING RECORD

Ending Period : 31st October 2004

ITEM	DISTRICT	ROUTE NO.	ROADNAME	AREA ( m <sup>2</sup> )		PREMIX QUANTITY ( TON )		
				PREVIOUS MONTH	CURRENT MONTH	PREVIOUS MONTH	CURRENT MONTH	CUM. MONTH
1	Beaufort	01	Jalan Kota Kinabalu - Sindumin	344.93	5.02	43.21	0.60	43.81
2	Beaufort	502	Jalan Beaufort-Menumbok	323.79	0.00	39.27	0.00	39.27
3	Sipitang	01	Jalan Kota Kinabalu - Sindumin	256.40	4.13	30.99	0.50	31.49
4	Kuala Penyu	502	Jalan Beaufort-Menumbok	133.79	3.09	16.06	0.35	16.41
<b>TOTAL</b>				<b>1,058.91</b>	<b>12.24</b>	<b>129.53</b>	<b>1.45</b>	<b>130.98</b>

**LINTASAN RESOURCES SDN BHD** (566483-H)  
**PRIVATISATION OF WEST COAST SABAH FEDERAL ROADS MAINTENANCE**

SUMMARY FOR R01 - REPAIR TO PAVING BLOCKS RECORD

Ending Period : 31st October 2004

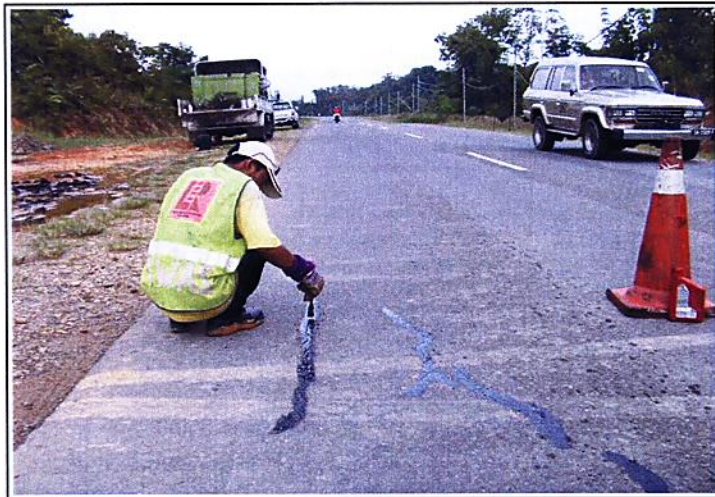
ITEM	DISTRICT	ROUTE NO.	ROADNAME	AREA ( m <sup>2</sup> )		
				PREVIOUS MONTH	CURRENT MONTH	CUM. MONTH
1	Penampang	501	Jalan Kota Kinabalu - Penampang - Lok Kawi	133.47	11.96	145.43
<b>TOTAL</b>				<b>133.47</b>	<b>11.96</b>	<b>145.43</b>

DISTRICT : BEAUFORT  
ROUTE NO : 01 JALAN KOTA KINABALU - SINDUMIN  
LOCATION : CH96.800 (KM98.560) - LHS

### SEALING OF CRACKS



**BEFORE**



**IN PROGRESS**



**AFTER**

LINTASAN RESOURCES SDN BHD  
**PAVEMENT REPAIR (SEALING OF CRACKS)**  
GRAND SUMMARY

MONTH: OCTOBER 2004

<b>R01 - PAVEMENT REPAIR</b>					
DISTRICT	ROUTE NO	ROAD NAME	SEALING OF CRACKS		
			Previous Mth	Current Mth	Cuumulative
			(m)	(m)	(m)
Kota Belud	01	Jalan Kota Kinabalu-Kudat	773.79	0.00	773.79
Kota Marudu	01	Jalan Kota Kinabalu-Kudat	956.00	0.00	956.00
Kudat	01	Jalan Kota Kinabalu-Kudat	0.00	0.00	0.00
Tuaran	01	Jalan Kota Kinabalu-Kudat	0.00	0.00	0.00
	22	Jalan Kota Kinabalu-Sandakan	0.00	0.00	0.00
	503	Jalan Berungis-Kota Belud	0.00	0.00	0.00
Kota Kinabalu	01	Jalan Kota Kinabalu-Kudat	423.44	0.00	423.44
	01	Jalan Kota Kinabalu-Sindumin	0.00	0.00	0.00
	606	Jalan Susur Sepangar Bay	0.00	0.00	0.00
	607	Jalan Masuk Ke Pelabuhan Baru	0.00	0.00	0.00
	608	Jalan Masuk ke Lapangan Terbang Lama	180.30	0.00	180.30
Penampang	01	Jalan Kota Kinabalu-Sindumin	2,348.80	0.00	2,348.80
	500	Jalan Kota Kinabalu-Keningau-Tenom	0.00	0.00	0.00
	501	Jalan Kota Kinabalu-Penampang-Lokkawı	0.00	0.00	0.00
Papar	01	Jalan Kota Kinabalu-Sindumin	1,691.60	0.00	1,691.60
Ranau	22	Jalan Kota Kinabalu-Sandakan	0.00	0.00	0.00
Tambunan	500	Jalan Kota Kinabalu-Keningau-Tenom	0.00	0.00	0.00
Keningau	500	Jalan Kota Kinabalu-Keningau-Tenom	0.00	0.00	0.00
Tenom	500	Jalan Kota Kinabalu-Keningau-Tenom	0.00	0.00	0.00
Beaufort	01	Jalan Kota Kinabalu-Sindumin	1,008.54	332.75	1,341.29
	502	Jalan Beaufort-Menumbok	0.00	0.00	0.00
Sipitang	01	Jalan Kota Kinabalu-Sindumin	2,634.32	0.00	2,634.32
Kuala Penyu	502	Jalan Beaufort-Menumbok	0.00	0.00	0.00
<b>TOTAL</b>			<b>10,016.79</b>	<b>332.75</b>	<b>10,349.54</b>

\* Note: The brought forward balances from previous month were not reported previously.

**LINTASAN RESOURCES SDN BHD** (566483-H)  
 PRIVATISATION OF WEST COAST SABAH FEDERAL ROADS MAINTENANCE

SUMMARY FOR R01 - SEALING OF CRACK RECORD

Ending Period : 31th October 2004

ITEM	DISTRICT	ROUTE NO.	ROADNAME	LENGTH (M)		
				PREVIOUS MONTH	CURRENT MONTH	CUM. MONTH
1	KOTA BELUD	01	Jalan Kota Kinabalu - Kudat	773 79	-	773 79
2	KOTA MARUDU	01	Jalan Kota Kinabalu - Kudat	956 00	-	956 00
3	KUDAT	01	Jalan Kota Kinabalu - Kudat	-	-	-
<b>TOTAL :</b>				<b>1,729.79</b>	<b>-</b>	<b>1,729.79</b>

**LINTASAN RESOURCES SDN BHD (566485-H)**  
**PRIVATISATION OF WEST COAST SABAH FEDERAL ROADS MAINTENANCE**

SUMMARY FOR R01 - SEALING OF CRACK RECORD

Ending Period : 31st October 2004

ITEM	DISTRICT	ROUTE NO.	ROAD NAME	LENGTH ( m )		
				PREVIOUS MONTH	CURRENT MONTH	CUM. MONTH
<b>WEST COAST (NORTH)</b>						
1	Kota Kinabalu	01	Jalan Kota Kinabalu - Kudat	423 44	-	423 44
2	Tuaran	01	Jalan Kota Kinabalu - Kudat	-	-	-
3	Tuaran	22	Jalan Kota Kinabalu - Sandakan	-	-	-
4	Tuaran	503	Jalan Berungis - Kota Belud	-	-	-
5	Kota Kinabalu	606	Jalan Susur Sepangar Bay	-	-	-
6	Kota Kinabalu	607	Jalan Masuk ke Pelabuhan Baru, K K	-	-	-
<b>TOTAL:</b>				<b>423.44</b>	<b>-</b>	<b>423.44</b>
<b>WEST COAST (SOUTH)</b>						
1	Kota Kinabalu	01	Jalan Kota Kinabalu - Sindumin	-	-	-
2	Penampang	01	Jalan Kota Kinabalu - Sindumin	2,348 80	-	2,348 80
3	Papar	01	Jalan Kota Kinabalu - Sindumin	1,691 60	-	1,691 60
4	Penampang	500	Jalan Kota Kinabalu - Keningau - Tenom	-	-	-
5	Penampang	501	Jalan Kota Kinabalu - Penampang - Lok Kawi	-	-	-
6	Kota Kinabalu	608	Jalan masuk ke Lapangan Terbang Lama, K K	180 30	-	180 30
<b>TOTAL:</b>				<b>-</b>	<b>-</b>	<b>4,220.70</b>
<b>TOTAL LENGTH OF CRACK SEALED FOR ( NORTH + SOUTH ) =</b>				<b>423.44</b>	<b>-</b>	<b>4,644.14</b>

**LINTASAN RESOURCES SDN BHD** (566483-H)  
 PRIVATISATION OF WEST COAST SABAH FEDERAL ROADS MAINTENANCE

SUMMARY FOR R01 - SEALING OF CRACK RECORD

Ending Period : 31st October 2004

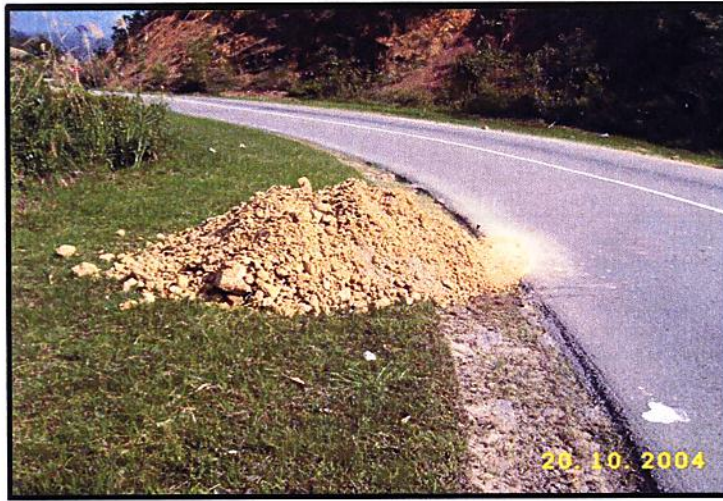
ITEM	DISTRICT	ROUTE NO.	ROAD NAME	LENGTH ( m )		
				PREVIOUS MONTH	CURRENT MONTH	CUM. MONTH
1	Beaufort	01	Jalan Kota Kinabalu - Sindumin	1,008.54	332.75	1,341.29
2	Beaufort	502	Jalan Beaufort-Menumbok	-	-	-
3	Sipitang	01	Jalan Kota Kinabalu - Sindumin	2,634.32	-	2,634.32
4	Kuala Penyu	502	Jalan Beaufort-Menumbok	-	-	-
<b>TOTAL LENGTH OF CRACK SEALED =</b>				<b>3,642.86</b>	<b>332.75</b>	<b>3,975.61</b>

**R 02**

**PENYENGGARAAN  
BAHU JALAN  
(SHOULDER)**

DISTRICT : TAMBUNAN  
ROUTE NO : 500 JALAN KOTA KINABALU-KENINGAU-TENOM  
LOCATION : CH155.850 (LHS)

**R02 ROAD SHOULDER**



Film Batch No: R02-2210-92

**BEFORE**



Film Batch No: R07-1109-11

**IN PROGRESS**



Film Batch No: R07-1109-12

**AFTER**

## LINTASAN RESOURCES SDN BHD

**SHOULDER REPAIR**  
**GRAND SUMMARY**

MONTH: OCTOBER 2004

R02 - SHOULDER REPAIR								
DISTRICT	ROUTE NO	ROAD NAME	EARTH SHOULDER			GRAVEL SHOULDER		
			Previous	Current	Cumm.	Previous	Current	Cumm.
			(m <sup>2</sup> )	(m <sup>2</sup> )	(m <sup>2</sup> )	(m <sup>2</sup> )	(m <sup>2</sup> )	(m <sup>2</sup> )
Kota Belud	01	Jalan Kota Kinabalu-Kudat	188 81	300 00	488 81	405 42	-	405 42
Kota Marudu	01	Jalan Kota Kinabalu-Kudat	-	-	-	-	-	-
Kudat	01	Jalan Kota Kinabalu-Kudat	-	-	-	300 00	-	300 00
Tuaran	01	Jalan Kota Kinabalu-Kudat	60 00	-	60 00	1,520 00	-	1,520 00
	22	Jalan Kota Kinabalu-Sandakan	-	390 00	390 00	-	-	-
	503	Jalan Berungis-Kota Belud	-	-	-	-	-	-
Kota Kinabalu	01	Jalan Kota Kinabalu-Kudat	1,831 00	-	1,831 00	20,941 18	-	20,941 18
	01	Jalan Kota Kinabalu-Sindumin	-	-	-	75 75	-	75 75
	606	Jalan Susur Sepangar Bay	-	-	-	-	-	-
	607	Jalan Masuk Ke Pelabuhan Baru	-	-	-	-	-	-
	608	Jalan Masuk ke Lapangan Terbang Lama	-	-	-	-	-	-
Penampang	01	Jalan Kota Kinabalu-Sindumin	8,463 00	-	8,463 00	3,540 00	-	3,540 00
	500	Jalan Kota Kinabalu-Keningau-Tenom	3,190 00	-	3,190 00	11,217 77	-	11,217 77
	501	Jalan Kota Kinabalu-Penampang-Lokkawı	-	-	-	8,120 13	-	8,120 13
Papar	01	Jalan Kota Kinabalu-Sindumin	6,895 00	-	6,895 00	207 27	-	207 27
Ranau	22	Jalan Kota Kinabalu-Sandakan	1,934 90	75 50	2,010 40	1,338 73	460 50	1,799 23
Tambunan	500	Jalan Kota Kinabalu-Keningau-Tenom	5,771 19	802 00	6,573 19	2,126 43	-	2,126 43
Keningau	500	Jalan Kota Kinabalu-Keningau-Tenom	-	-	-	862 09	-	862 09
Tenom	500	Jalan Kota Kinabalu-Keningau-Tenom	-	-	-	88 20	-	88 20
Beaufort	01	Jalan Kota Kinabalu-Sindumin	27 00	-	27 00	1,543 24	4,409 10	5,952 34
	502	Jalan Beaufort-Menumbok	175 00	-	175 00	96 60	-	96 60
Sipitang	01	Jalan Kota Kinabalu-Sindumin	-	-	-	40 39	-	40 39
Kuala Penyu	502	Jalan Beaufort-Menumbok	-	-	-	119 70	-	119 70
<b>TOTAL</b>			<b>28,535.90</b>	<b>1,567.50</b>	<b>30,103.40</b>	<b>52,542.90</b>	<b>4,869.60</b>	<b>57,412.50</b>

**LINTASAN RESOURCES SDN BHD** (566483-H)  
 PRIVATISATION OF WEST COAST SABAH FEDERAL ROADS MAINTENANCE

SUMMARY FOR R02 - SHOULDER REPAIR SUMMARY

Ending Period : 31 October 2004

ITEM	DISTRICT	ROUTE NO.	ROADNAME	EARTH SHOULDER AREA ( m <sup>2</sup> )		GRAVEL SHOULDER AREA (m <sup>2</sup> )		GRASS INVENTORY		ROAD SHOULDER DEFECT (m <sup>2</sup> )
				PREVIOUS MONTH	CURRENT MONTH	PREVIOUS MONTH	CURRENT MONTH	EARTH SHOULDER ESTIMATE QTY (m <sup>2</sup> )	GRAVEL SHOULDER ESTIMATE QTY (m <sup>2</sup> )	
			<b>WEST COAST (NORTH)</b>							
1	KOTA BELUD	01	Jalan Kota Kinabalu - Kudat	188 81	300 00	405 42	-	325,804 50	1,225 40	23,342 70
2	KOTA MARUDU	01	Jalan Kota Kinabalu - Kudat					184,545 00	14,474 50	18,724 48
3	KUDAT	01	Jalan Kota Kinabalu - Kudat			300 00	-	313,817 50	5,445 60	911 00
<b>TOTAL</b>				<b>188.81</b>	<b>300.00</b>	<b>705.42</b>	<b>-</b>	<b>824,167.00</b>	<b>21,145.50</b>	<b>42,978.18</b>

**LINTASAN RESOURCES SDN BID (566483-H)**  
**PRIVATISATION OF WEST COAST SABAH FEDERAL ROADS MAINTENANCE**

**SUMMARY FOR R02 - SHOULDER REPAIR SUMMARY**

*Ending Period : 31st October 2004*

ITEM	DISTRICT	ROUTE NO.	ROADNAME	EARTH SHOULDER AREA ( m <sup>2</sup> )		GRAVEL SHOULDER AREA ( m <sup>2</sup> )	
				PREVIOUS MONTH	CURRENT MONTH	PREVIOUS MONTH	CURRENT MONTH
<b>WEST COAST (NORTH)</b>							
1	Kota Kinabalu	01	Jalan Kota Kinabalu - Kudat	1,831.00	-	20,941.18	-
2	Tuaran	01	Jalan Kota Kinabalu - Kudat	60.00	-	1,520.00	-
3	Tuaran	22	Jalan Kota Kinabalu - Sandakan	-	390.00	-	-
4	Tuaran	503	Jalan Berungis - Kota Belud	-	-	-	-
5	Kota Kinabalu	606	Jalan Susur Sepangar Bay	-	-	-	-
6	Kota Kinabalu	607	Jalan Masuk ke Pelabuhan Baru, KK	-	-	-	-
<b>TOTAL</b>				<b>1,891.00</b>	<b>390.00</b>	<b>22,461.18</b>	<b>-</b>
<b>WEST COAST (SOUTH)</b>							
1	Kota Kinabalu	01	Jalan Kota Kinabalu - Sindumin	-	-	75.75	-
2	Penampang	01	Jalan Kota Kinabalu - Sindumin	8,463.00	-	3,540.00	-
3	Papar	01	Jalan Kota Kinabalu - Sindumin	6,895.00	-	207.27	-
4	Penampang	500	Jalan KK - Keningau - Tenom	3,190.00	-	11,217.77	-
5	Penampang	501	Jalan KK - Penampang - Lok Kawi	-	-	8,120.13	-
6	Kota Kinabalu	608	Jalan Masuk ke Lapangan Terbang Lama, KK	-	-	-	-
<b>TOTAL</b>				<b>18,548.00</b>	<b>-</b>	<b>23,160.92</b>	<b>-</b>
<b>TOTAL FOR (NORTH + SOUTH) =</b>				<b>20,439.00</b>	<b>390.00</b>	<b>45,622.10</b>	<b>0.00</b>



**LINTASAN RESOURCES SDN BHD** (566483-H)  
 PRIVATISATION OF WEST COAST SABAH FEDERAL ROADS MAINTENANCE

**SUMMARY FOR R02 - SHOULDER REPAIR SUMMARY**

**Ending Period : 30TH OCTOBER 2004**

ITEM	DISTRICT	ROUTE NO	ROADNAME	EARTH SHOULDER AREA (m2)			GRAVEL SHOULDER AREA (m2)			INVENTORY		ROAD SHOULDER SHOULDER DEFECTS (M2)
				PREVIOUS MONTH	CURRENT MONTH	CUM MONTH	PREVIOUS MONTH	CURRENT MONTH	CUM MONTH	EARTH SHOULDER EXTIMATE QTY (m2)	GRAVEL SHOULDER EXTIMATE QTY (m2)	
1	Tambunan	500	Jalan K K - Keningau - Tenom	5771 19	802 00 0 00	6573 19	2126 43	0 00	2126 43	187,150 00	143545	41,772 50
2	Keningau	500	Jalan K K - Keningau - Tenom	0 00	0 00	0 00	862 09	0 00	862 09	67,600 00	114,620 00	18,785 70
3	Tenom	500	Jalan K K - Keningau - Tenom	0 00	0 00	0 00	88 20	0 00	88 20	50,750 00	117 000 00	8 808 44
<b>TOTAL</b>				<b>5,771.19</b>	<b>802.0</b>	<b>6,573.19</b>	<b>3,076.7</b>	<b>-</b>	<b>3,076.7</b>	<b>305,500.00</b>	<b>375,165.00</b>	<b>69,366.64</b>

**LINTASAN RESOURCES SDN BHD** (566483-II)  
 PRIVATISATION OF WEST COAST SABAH FEDERAL ROADS MAINTENANCE

SUMMARY FOR R02 - SHOULDER REPAIR RECORD

Ending Period : 31th OCTOBER 2004

ITEM	DISTRICT	ROUTE NO.	ROADNAME	AREA ( m <sup>2</sup> ) - Earth Shoulder		AREA ( m <sup>2</sup> ) - Gravel Shoulder	
				PREVIOUS MONTH	CURRENT MONTH	PREVIOUS MONTH	CURRENT MONTH
1	Beaufort	01	Jalan Kota Kinabalu - Sindumin	27.00	0.00	1543.24	4409.10
2	Beaufort	502	Jalan Beaufort-Menumbok	175.00	0.00	96.60	0.00
3	Sipitang	01	Jalan Kota Kinabalu - Sindumin	0.00	0.00	40.39	0.00
4	Kuala Penyu	502	Jalan Beaufort-Menumbok	0.00	0.00	119.70	0.00
<b>TOTAL</b>				<b>202.00</b>	<b>-</b>	<b>1,799.93</b>	<b>4,409.10</b>
							<b>6,209.03</b>

**R 03**

**PEMOTONGAN  
RUMPUT  
(GRASS CUTTING)**

DISTRICT : KUDAT  
ROUTE NO : 01-JALAN KOTA KINABALU - KUDAT  
LOCATION : CH 144.532 (RHS)

**R03 GRASS CUTTING**



Film Batch No: P1010048

**BEFORE**



Film Batch No: P1010050

**IN PROGRESS**



Film Batch No: P1010053

**AFTER**

DISTRICT : PENAMPANG  
ROUTE NO : 500 JALAN KK-KENINGAU-TENOM  
LOCATION : KM53.600 (RHS)

### R03 GRASS CUTTING



Picture No: 14104/133.jpg

**BEFORE**



Picture No: 14104/132.jpg

**IN PROGRESS**



Picture No: 14104/131.jpg

**AFTER**

DISTRICT : KENINGAU  
ROUTE NO : 500 JALAN KOTA KINABALU-KENINGAU-TENOM  
LOCATION : CH125.720 (RHS)

### R03 GRASS CUTTING



Film Batch No: R07-1109-10

**BEFORE**



Film Batch No: R07-1109-11

**IN PROGRESS**



Film Batch No: R07-1109-12

**AFTER**

DISTRICT : BEAUFORT  
ROUTE NO : 01 JALAN KOTA KINABALU - SINDUMIN  
LOCATION : CH86.370 (KM88.130) - RHS

### R03 GRASS CUTTING



**BEFORE**



**IN PROGRESS**



**AFTER**

DISTRICT : KOTA BELUD  
ROUTE NO : 01-JALAN KOTA KINABALU-KUDAT  
LOCATION : CH73.56

### R04 ROAD FURNITURE



Film Batch No: PA260027

**BEFORE**



Film Batch No: PA260033

**IN PROGRESS**



Film Batch No: PA260034

**AFTER**

DISTRICT : KOTA BELUD  
ROUTE NO : 01-JALAN KOTA KINABALU-KUDAT  
LOCATION : 72.97

### R04 ROAD FURNITURE



Film Batch No: PA270031

**BEFORE**



Film Batch No: PA270021

**IN PROGRESS**



Film Batch No: PA270022

**AFTER**

DISTRICT : KOTA BELUD  
ROUTE NO : 01-JALAN KOTA KINABALU-KUDAT  
LOCATION : CH 99.970

**R04 ROAD FURNITURE**



Film Batch No: P1010014

**BEFORE**



Film Batch No: P1010015

**IN PROGRESS**



Film Batch No: P1010017

**AFTER**

DISTRICT : TUARAN  
ROUTE NO : 22 JALAN KOTA KINABALU-SANDAKAN  
LOCATION : KM19.320 (RHS)

### R04 ROAD FURNITURE



Picture No: 27104/293.jpg

**BEFORE**



Picture No: 27104/292.jpg

**IN PROGRESS**



Picture No: 27104/291.jpg

**AFTER**

DISTRICT : RANAU  
ROUTE NO : 22 JALAN KOTA KINABALU-SANDAKAN  
LOCATION : CH71.700 (KM108.300) - LHS

### R04 ROAD FURNITURE



Film Batch No: 3887:3

**BEFORE**



Film Batch No: 3887:7

**IN PROGRESS**

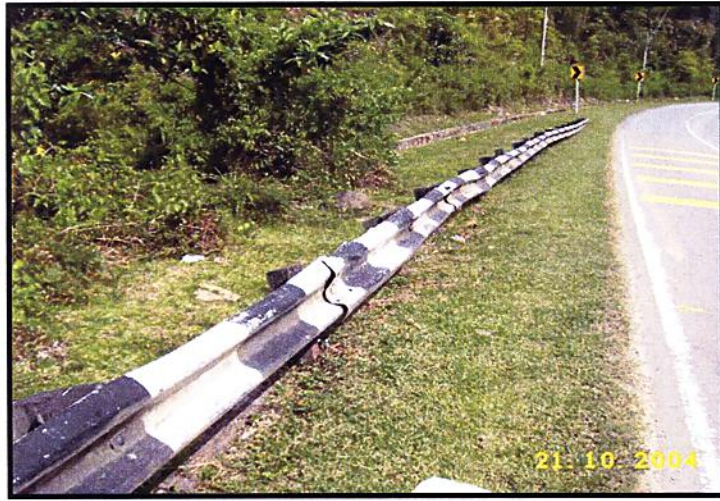


Film Batch No: 3887:5

**AFTER**

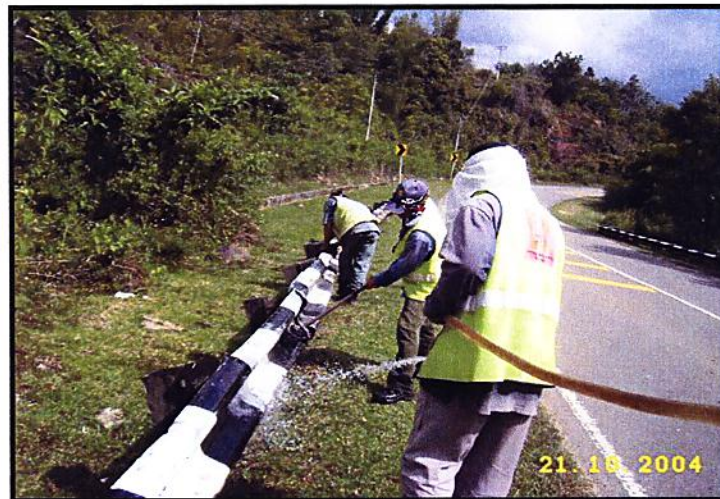
DISTRICT : TAMBUNAN  
ROUTE NO : 500 JALAN KOTA KINABALU-KENINGAU-TENOM  
LOCATION : CH61.400 (LHS)

### R04 ROAD FURNITURE



Film Batch No: R04-2210-112

**BEFORE**



Film Batch No: R04-2210-114

**IN PROGRESS**



Film Batch No: R04-2210-116

**AFTER**

108

DISTRICT : BEAUFORT  
ROUTE NO : 502 JALAN BEAUFORT - MENUMBUK  
LOCATION : CH4.000 (KM4.000) - LHS

### R04 ROAD FURNITURE



**BEFORE**



**IN PROGRESS**



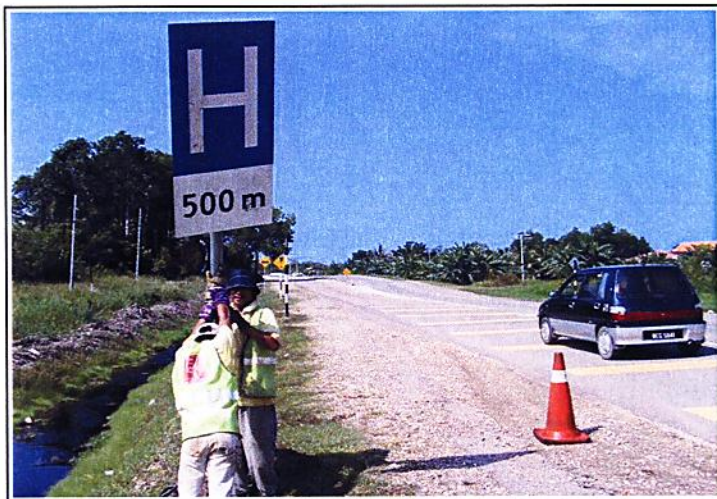
**AFTER**

DISTRICT : SIPITANG  
ROUTE NO : 01 JALAN KOTA KINABALU - SINDUMIN  
LOCATION : CH136.305 (KMI38.065) - LHS

### R04 ROAD FURNITURE



BEFORE



IN PROGRESS



AFTER

**R 04**

**PENYENGGARAAN  
PERABOT JALAN  
(ROAD FURNITURE)**

**R 05**

**PENYENGGARAAN  
JAMBATAN & PEMBENTUNG  
(BRIDGES & CULVERTS)**

DISTRICT : TUARAN  
ROUTE NO : 22 JALAN KOTA KINABALU-SANDAKAN  
LOCATION : Ch37.30

**R05 CULVERT**



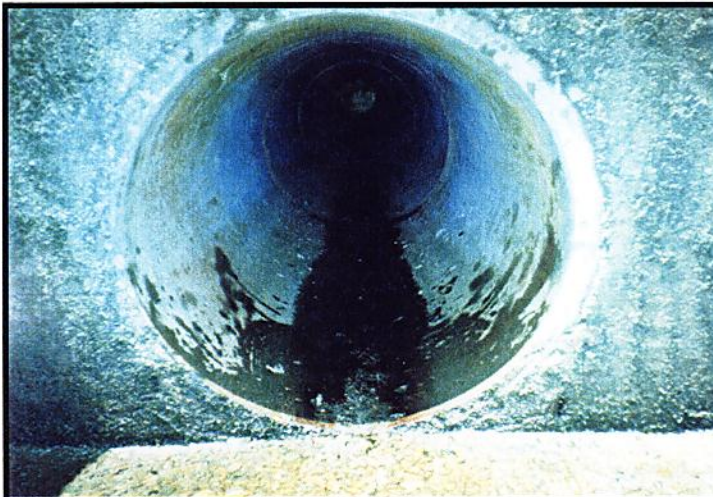
Picture No: 27104/240.jpg

**BEFORE**



Picture No: 27104/241.jpg

**IN PROGRESS**



Picture No: 27104/242.jpg

**AFTER**

DISTRICT : TUARAN  
ROUTE NO : 01 JALAN KOTA KINABALU-KUDAT  
LOCATION : KM13.90

### R05 CULVERT



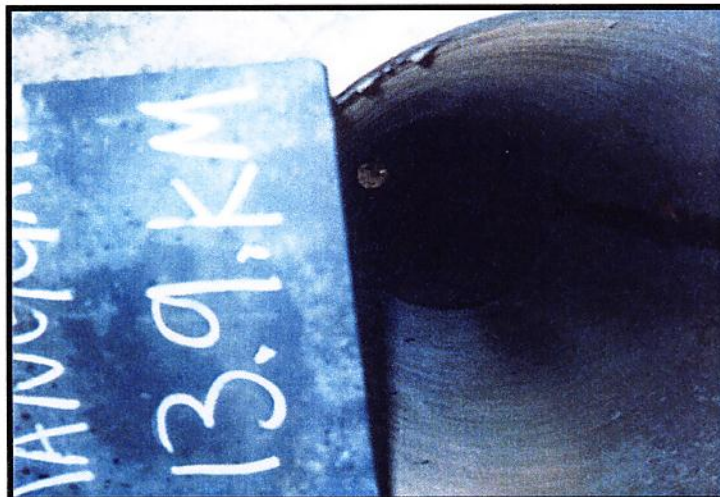
Picture No: 12104/042.jpg.

**BEFORE**



Picture No: 12104/043.jpg.

**IN PROGRESS**



Picture No: 12104/041.jpg.

**AFTER**

DISTRICT : RANAU  
ROUTE NO : 22 JALAN KOTA KINABALU - SANDAKAN  
LOCATION : CH 65.000 (KM 101.600)

### R05 CULVERT



Film Batch No: RNU-IMG\_0280

**BEFORE**



Film Batch No: RNU-IMG\_0282

**IN PROGRESS**



Film Batch No: RNU-IMG\_0305

**AFTER**

DISTRICT : RANAU  
ROUTE NO : 22 JALAN KOTA KINABALU - SANDAKAN  
LOCATION : CH 65.000 (KM 101.600)

### R05 CULVERT



Film Batch No: RNU-IMG\_0281

**BEFORE**



Film Batch No: RNU-IMG\_0283

**IN PROGRESS**



Film Batch No: RNU-IMG\_0306

**AFTER**

22

DISTRICT : BEAUFORT  
ROUTE NO : 01 JALAN KOTA KINABALU - SINDUMIN  
LOCATION : CH76.087 (KM77.847)

**R05 CULVERT**



**BEFORE**



**IN PROGRESS**



**AFTER**

**R 07**

**PENYENGGARAAN  
LONGKANG  
(DRAINAGE)**

DISTRICT : KOTA BELUD  
ROUTE NO : 01-JALAN KOTA KINABALU-KUDAT  
LOCATION : CH 70.470

### R07 DRAINAGE



Film Batch No: P1010027

**BEFORE**



Film Batch No: P1010030

**IN PROGRESS**



Film Batch No: P1010033

**AFTER**

DISTRICT : KOTA BELUD  
ROUTE NO : 01-JALAN KOTA KINABALU-KUDAT  
LOCATION : CH 70.370

**R07 DRAINAGE**



Film Batch No: P1010022

**BEFORE**



Film Batch No: P1010024

**IN PROGRESS**



Film Batch No: P1010025

**AFTER**

DISTRICT : TUARAN  
ROUTE NO : 22 JALAN KOTA KINABALU-SANDAKAN  
LOCATION : Ch37.90

### R07 DRAINAGE



Picture No: 27104/230.jpg

**BEFORE**



Picture No: 27104/231.jpg

**IN PROGRESS**



Picture No: 27104/233.jpg

**AFTER**

47

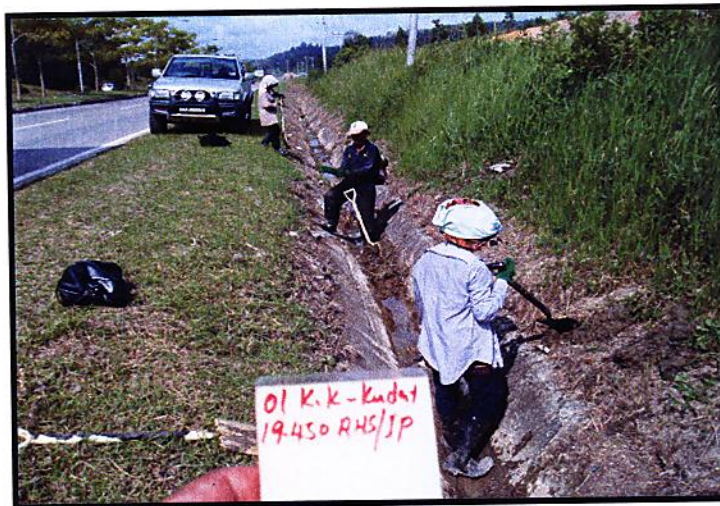
DISTRICT : KOTA KINABALU  
ROUTE NO : 01 JALAN KOTA KINABALU-KUDAT  
LOCATION : CH19.450 (RHS)

### R07 DRAINAGE



Picture No: 20104/089.jpg

**BEFORE**



Picture No: 20104/090.jpg

**IN PROGRESS**



Picture No: 23104/031.jpg

**AFTER**

DISTRICT : PENAMPANG  
ROUTE NO : 501 JALAN KK-PENAMPANG-LOK KAWI  
LOCATION : KM21.70 (LHS)

### R07 DRAINAGE



Picture No: 16104/011.jpg

**BEFORE**



Picture No: 18104/006.jpg

**IN PROGRESS**



Picture No: 18104/004.jpg

**AFTER**

DISTRICT : PENAMPANG  
ROUTE NO : 01 JALAN KOTA KINABALU-SINDUMIN  
LOCATION : KM9.70 (MEDIAN)

### R07 DRAINAGE



Picture No: 12104/023.jpg.

**BEFORE**



Picture No: 12104/022.jpg.

**IN PROGRESS**



Picture No: 12104/021.jpg.

**AFTER**

DISTRICT : RANAU  
ROUTE NO : 22 JALAN KOTA KINABALU - SANDAKAN  
LOCATION : CH 64.200 (KM 100.800) - RHS

### R07 DRAINAGE



Film Batch No: RNU-IMG\_0275

**BEFORE**



Film Batch No: RNU-IMG\_0277

**IN PROGRESS**



Film Batch No: RNU-IMG\_0287

**AFTER**

DISTRICT : KENINGAU  
ROUTE NO : 500 JALAN KOTA KINABALU-KENINGAU-TENOM  
LOCATION : CH 120.300

### R07 DRAINAGE



Film Batch No: R07-1101-54

**BEFORE**



Film Batch No: R07-1200-42

**AFTER**

DISTRICT : BEAUFORT  
ROUTE NO : 01 JALAN KOTA KINABALU - SINDUMIN  
LOCATION : CH106.770 (KM108.530) - RHS

### R07 DRAINAGE



**BEFORE**



**IN PROGRESS**



**AFTER**

**B**

**PEMERIKSAAN  
RUTIN  
(INSPECTION)**

DISTRICT : KUALA PENYU  
ROUTE NO : 502 JALAN BEAUFORT - MENUK  
LOCATION : CH54.350 (KM54.350) - LHS

**(B) ROUTINE INSPECTION**



**BEFORE**



**AFTER**

DISTRICT : TAMBUNAN  
ROUTE NO : 500 JALAN KOTA KINABALU-KENINGAU-TENOM  
LOCATION : CH49.700 (RHS)

**B : INSPECTION**



Film Batch No: B-2210-061

**BEFORE**



Film Batch No: B-2210-063

**IN PROGRESS**



Film Batch No: B-2210-064

**AFTER**

DISTRICT : KOTA BELUD  
ROUTE NO : 01-JALAN KOTA KINABALU - KUDAT  
LOCATION : CH 69.970

**CARCASSES**



Film Batch No: P1010015

**BEFORE**



Film Batch No: P1010019

**IN PROGRESS**



Film Batch No: P1010018

**AFTER**

137

DISTRICT : RANAU  
ROUTE NO : 22 JALAN KOTA KINABALU-SANDAKAN  
LOCATION : CH46.710 (KM83.310) - LHS

### ROUTINE INSPECTION



Film Batch No: 4581 7

**BEFORE**



Film Batch No: 4581 8

**IN PROGRESS**



Film Batch No: 4581 9

**AFTER**