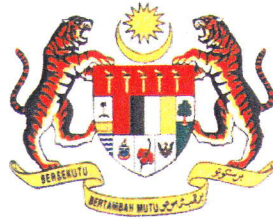


URSB

PENSWASTAAN PENYENGGARAAN
JALAN-JALAN PERSEKUTUAN DI SABAH
(PANTAI BARAT & PENDALAMAN)



THE GOVERNMENT OF MALAYSIA

**LAPORAN KEMAJUAN BULANAN
NO. 13**

SEPTEMBER 2004



Jabatan Kerja Raya, Negeri Sabah

Concessionaire : Lintasan Resources Sdn. Bhd. 566483-H

LINTASAN RESOURCES SDN. BHD.

PENSWASTAAN PENYENGGARAAN JALAN-JALAN
PERSEKUTUAN DI SABAH (PANTAI BARAT & PENDALAMAN)

LAPORAN KEMAJUAN BULANAN SEPTEMBER 2004

ISI KANDUNGAN

Bil:	<u>PERKARA</u>
1.	Laporan Eksekutif Projek
2.	Carta Organisasi Syarikat
3.	Lokasi Jalan Persekutuan
4.	Ringkasan Laporan Kemajuan Bulanan
5.	R 01 - Penyenggaraan Permukaan Jalan
6.	R 02 - Penyenggaraan Bahu Jalan
7.	R 03 - Pemetongan Rumput
8.	R 04 - Penyenggaraan Perabot Jalan
9.	R 05 - Penyenggaraan Jambatan dan Pembentungan
10.	R 07 - Penyenggaraan Longkang
11.	B - Pemeriksaan Rutin

**LAPORAN
EKSEKUTIF PROJEK**

LAPORAN EKSEKUTIF PROJEK

TAJUK KONTRAK	:	PENSWASTAAN PENYENGGARAAN JALAN-JALAN PERSEKUTUAN DI SABAH (PANTAI BARAT & PENDALAMAN)
KLIEN	:	JABATAN KERJA RAYA, SABAH
SYARIKAT	:	LINTASAN RESOURCES SDN. BHD. Lot 1, Block A, Ground Floor, Wisma TP Mile 1 ½, Tuaran Road 88400 Kota Kinabalu, Sabah, Malaysia.
TEMPOH	:	15 TAHUN
TARIKH MULA	:	01hb September 2003
TARIKH TAMAT	:	31hb August 2018
KAWASAN	:	PANTAI BARAT & PENDALAMAN
JALAN TERLIBAT	:	Semua Jalan-Jalan Persekutuan Yang Diwartakan Dibawah Akta Jalan Persekutuan 1959
PANJANG JALAN	:	764.85 Kilometer
KATEGORI JALAN	:	a) Jalan Protocol b) Jalan Utama c) Jalan Sekunder
SKOP KERJA	:	a) Penyenggaraan Rutin b) Kerja-Kerja Kecemasan

RINGKASAN LAPORAN :

ROUTINE MAINTENANCE

Routine Road Maintenance work for Month of September could be said to be a case of "business as usual". Nothing out of the ordinary had occurred during the period. The frequency and cycle of routine maintenance activities adhered closely with the JKR approved Programme.

PERIODIC MAINTENANCE

All Works Orders for the 2004 Periodic Programme have been issued – 17 packages in total. 12 of them have either been completed or in an advance state of completion. Heavy patching work is on-going for the remaining 5 packages. Meanwhile, mix designs for them are in hand. Quality Control Test Plan & Method Statement for these are now with JKR. At this juncture, we do not foresee any difficulty completing the whole 2004 Periodic Works within the financial year.

The Proposed 2005 Periodic Maintenance Programme has been submitted to JKR. We eagerly await the final approved Programme, hopefully sizeable funds are allocated for the purpose.

EMERGENCY WORK

Clearing of minor landslide and fallen trees formed the bulk of the emergency work during the month.

30/09/2004

**CARTA
ORGANISASI SYARIKAT**

**LOKASI
JALAN PERSEKUTUAN
DI
SABAH
(PANTAI BARAT & PENDALAMAN)**

**RINGKASAN
LAPORAN KEMAJUAN
BULANAN**

KERJA-KERJA RUTIN
(ROUTINE MAINTENANCE)

KERJA-KERJA RUTIN
(ROUTINE MAINTENANCE)

R 01

**PENYENGGARAAN
PERMUKAAN JALAN
(POTHOLE PATCHING)**

DISTRICT : KOTA BELUD
ROUTE NO : 01-JALAN KOTA KINABALU-KUDAT
LOCATION : CH71.370

R01 PAVEMENT



Film Batch No: P1010083

BEFORE



Film Batch No: P1010090

IN PROGRESS



Film Batch No: P1010093

AFTER

R01 PAVEMENT

Film Batch No: 1263/10



BEFORE

Film Batch No: 1263/11



IN PROGRESS

Film Batch No: 1263/12



AFTER

R01 PAVEMENT

Film Batch No: 1280/7



BEFORE

Film Batch No: 1280/8



IN PROGRESS

Film Batch No: 1280/10



AFTER

DISTRICT : BEAUFORT
ROUTE NO : 01 JALAN KOTA KINABALU - SINDUMIN
LOCATION : CH101.200 (KM102.960) - RHS

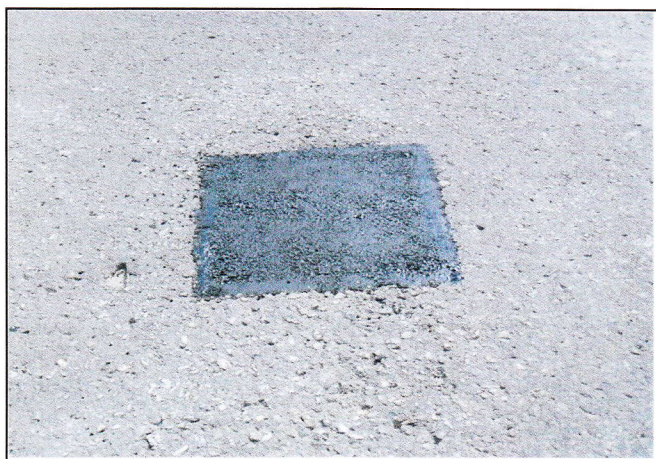
R01 PAVEMENT



BEFORE



IN PROGRESS



AFTER

LINTASAN RESOURCES SDN. BHD.
PAVEMENT REPAIR (POTHOLE PATCHING)
GRAND SUMMARY

MONTH: SEPTEMBER 2004

R01 - PAVEMENT REPAIR					
DISTRICT	ROUTE NO	ROAD NAME	PREMIX FOR POTHOLE		
			Previous Mth	Current Mth	Cuumulative
			(ton)	(Ton)	(Ton)
Kota Belud	01	Jalan Kota Kinabalu-Kudat	177.23	14.97	192.20
Kota Marudu	01	Jalan Kota Kinabalu-Kudat	8.36	2.66	11.02
Kudat	01	Jalan Kota Kinabalu-Kudat	10.12	0.00	10.12
Tuaran	01	Jalan Kota Kinabalu-Kudat	422.60	30.48	453.08
	22	Jalan Kota Kinabalu-Sandakan	97.67	2.23	99.90
	503	Jalan Berungis-Kota Belud	16.38	0.41	16.79
Kota Kinabalu	01	Jalan Kota Kinabalu-Kudat	503.57	34.74	538.31
	01	Jalan Kota Kinabalu-Sindumin	14.75	0.00	14.75
	606	Jalan Susur Sepangar Bay	49.41	0.00	49.41
	607	Jalan Masuk Ke Pelabuhan Baru	2.42	0.00	2.42
	608	Jalan Masuk ke Lapangan Terbang Lama	8.47	0.18	8.65
Penampang	01	Jalan Kota Kinabalu-Sindumin	19.61	0.66	20.27
	500	Jalan Kota Kinabalu-Keningau-Tenom	254.52	36.49	291.01
	501	Jalan Kota Kinabalu-Penampang-Lokkawi	121.98	26.52	148.50
Papar	01	Jalan Kota Kinabalu-Sindumin	392.87	29.06	421.93
Ranau	22	Jalan Kota Kinabalu-Sandakan	435.90	102.97	538.87
Tambunan	500	Jalan Kota Kinabalu-Keningau-Tenom	89.26	3.43	92.69
Keningau	500	Jalan Kota Kinabalu-Keningau-Tenom	4.65	0.70	5.35
Tenom	500	Jalan Kota Kinabalu-Keningau-Tenom	3.45	1.68	5.13
Beaufort	01	Jalan Kota Kinabalu-Sindumin	41.98	1.23	43.21
	502	Jalan Beaufort-Menumbok	39.27	0.00	39.27
Sipitang	01	Jalan Kota Kinabalu-Sindumin	30.72	0.27	30.99
Kuala Penyu	502	Jalan Beaufort-Menumbok	16.06	0.00	16.06
TOTAL			2,761.25	288.68	3,049.93

LINTASAN RESOURCES SDN BHD (566483-11)
 PRIVATISATION OF WEST COAST SABAH FEDERAL ROADS MAINTENANCE

SUMMARY FOR R01 - POTHOLE PATCHING RECORD

Ending Period : 30 September 2004

ITEM	DISTRICT	ROUTE NO.	ROADNAME	AREA (m ²)			PREMIX QUANTITY (TON)			INVENTORY CARRIAGEWAY ESTIMATE QTY (m ²)
				PREVIOUS MONTH	CURRENT MONTH	CUM. MONTH	PREVIOUS MONTH	CURRENT MONTH	CUM. MONTH	
1	KOTA BELUD	01	Jalan Kota Kinabalu - Kudat	1,466.42	124.60	1,591.02	177.23	14.97	192.20	313,971.000
2	KOTA MARUDU	01	Jalan Kota Kinabalu - Kudat	69.02	22.13	91.15	8.36	2.66	11.02	180,993.00
3	KUDAT	01	Jalan Kota Kinabalu - Kudat	84.25	-	84.25	10.12	-	10.12	308,338.00
TOTAL				1,619.69	146.73	1,766.42	195.71	17.63	213.34	803,302.00

LINTASAN RESOURCES SDN BHD (566483-II)
PRIVATISATION OF WEST COAST SABAH FEDERAL ROADS MAINTENANCE

SUMMARY FOR R01 - POTHOLE PATCHING RECORD

Ending Period : 30th September 2004

ITEM	DISTRICT	ROUTE NO.	ROAD NAME	AREA (m ²)			PREMIX QUANTITY (TON)		
				PREVIOUS MONTH	CURRENT MONTH	CUM. MONTH	PREVIOUS MONTH	CURRENT MONTH	CUM. MONTH
WEST COAST (NORTH)									
1	Kota Kinabalu	01	Jalan Kota Kinabalu - Kudat	3,530.92	289.42	3,820.34	503.57	34.74	538.31
2	Tuaran	01	Jalan Kota Kinabalu - Kudat	2,902.94	248.42	3,151.36	422.60	30.48	453.08
3	Tuaran	22	Jalan Kota Kinabalu - Sandakan	713.01	18.61	731.62	97.67	2.23	99.90
4	Tuaran	503	Jalan Berungis - Kota Belud	102.69	3.42	106.11	16.38	0.41	16.79
5	Kota Kinabalu	606	Jalan Susur Sepangar Bay	282.21	-	282.21	49.41	-	49.41
6	Kota Kinabalu	607	Jalan Masuk ke Pelabuhan Baru, K.K.	16.94	-	16.94	2.42	-	2.42
TOTAL:				7,548.71	559.87	8,108.58	1,092.05	67.86	1,159.91
WEST COAST (SOUTH)									
1	Kota Kinabalu	01	Jalan Kota Kinabalu - Sindumin	98.57	-	98.57	14.75	-	14.75
2	Penampang	01	Jalan Kota Kinabalu - Sindumin	158.78	4.86	163.64	19.61	0.66	20.27
3	Papar	01	Jalan Kota Kinabalu - Sindumin	2,900.41	202.53	3,102.94	392.87	29.06	421.93
4	Penampang	500	Jalan Kota Kinabalu - Keningau - Tenom	1,652.76	194.30	1,847.06	254.52	36.49	291.01
5	Penampang	501	Jalan Kota Kinabalu - Penampang - Lok Kawi	830.02	108.19	938.21	121.98	26.52	148.50
6	Kota Kinabalu	608	Jalan masuk ke Lapangan Terbang Lama, K.K.	65.35	1.54	66.89	8.47	0.18	8.65
TOTAL:				5,705.89	511.42	6,217.31	812.20	92.91	905.11
TOTAL FOR (NORTH + SOUTH) =				13,254.60	1,071.29	14,325.89	1,904.25	160.77	2,065.02

LINTASAN RESOURCES SDN BHID (566483-H)
 PRIVATISATION OF WEST COAST SABAH FEDERAL ROADS MAINTENANCE

SUMMARY FOR R01 - POTHOLE PATCHING RECORD

Ending Period : 30th September 2004

ITEM	DISTRICT	ROUTE NO.	ROADNAME	AREA (m ²)		PREMIX QUANTITY (TON)		
				PREVIOUS MONTH	CURRENT MONTH	PREVIOUS MONTH	CURRENT MONTH	CUM. MONTH
1	Ranau	22	Jalan Kota Kinabalu - Sandakan	2,128.48	474.17	435.90	102.97	538.87
TOTAL				2,128.48	474.17	435.90	102.97	538.87

LINTASAN RESOURCES SDN BHD (566483-H)
 PRIVATISATION OF WEST COAST SABAH FEDERAL ROADS MAINTENANCE

SUMMARY FOR R01 - POTHOLE PATCHING RECORD

Ending Period : 30 SEPTEMBER 2004

ITEM	DISTRICT	ROUTE NO.	ROADNAME	AREA (m ²)		PREMIX QUANTITY (TON)			INVENTORY CARRIAGEWAY ESTIMATE QTY (m2)	
				PREVIOUS MONTH	CURRENT MONTH	CUM. MONTH	PREVIOUS MONTH	CURRENT MONTH		CUM. MONTH
1	Tambunan	500	Jalan Kota Kinabalu - Keningau - Tenom	670.83	17.08	687.91	89.26	3.43	92.69	398,552.47
2	Keningau	500	Jalan Kota Kinabalu - Keningau - Tenom	37.66	5.78	43.44	4.65	0.70	5.35	278,055.67
3	Tenom	500	Jalan Kota Kinabalu - Keningau - Tenom	25.81	22.97	48.78	3.45	1.68	5.13	179,227.77
TOTAL				734.31	45.83	780.14	97.37	5.81	103.18	855,835.91

LINTASAN RESOURCES SDN BHD (566483-H)
 PRIVATISATION OF WEST COAST SABAH FEDERAL ROADS MAINTENANCE

ANALYSIS OF POTHOLE PATCHING WORK

Ending Period : 30 AUGUST 2004

MONTH DISTRICT	Accum. up to JUNE 2004			JULY 2004			AUGUST 2004			SEPTEMBER 2004			Current Accum.		
	NOS	AREA	TON	NOS	AREA	TON	NOS	AREA	TON	NOS	AREA	TON	NOS	AREA	TON
TAMBUNAN	264	452.612	59.32	37	73.27	8.77	60	144.94	21.13	9	17.08	3.43	370	687.90	92.65
KENINGAU	28	19.193	2.43	2	0.94	0.11	5	17.53	2.11	2	5.78	0.70	37	43.44	5.35
TENOM	37	25.062	3.36	1	0.74	0.09	0	0.00	0.00	4	22.97	1.68	42	48.77	5.13
TOTAL	329	496.868	65.11	40	74.95	8.97	65	162.47	23.24	15	45.83	5.81	449	780.12	103.13

LINTASAN RESOURCES SDN BHD (566483-H)
 PRIVATISATION OF WEST COAST SABAH FEDERAL ROADS MAINTENANCE

SUMMARY FOR R01 - POTHLES PATCHING RECORD

Ending Period : 30th September 2004

ITEM	DISTRICT	ROUTE NO.	ROADNAME	AREA (m ²)			PREMIX QUANTITY (TON)		
				PREVIOUS MONTH	CURRENT MONTH	CUM. MONTH	PREVIOUS MONTH	CURRENT MONTH	CUM. MONTH
1	Beaufort	01	Jalan Kota Kinabalu - Sindumin	339.95	4.98	334.93	41.98	1.23	43.21
2	Beaufort	502	Jalan Beaufort-Menumbok	323.79	0.00	323.79	39.27	0.00	39.27
3	Sipitang	01	Jalan Kota Kinabalu - Sindumin	254.20	2.20	256.40	30.72	0.27	30.99
4	Kuala Penyu	502	Jalan Beaufort-Menumbok	133.79	0.00	133.79	16.06	0.00	16.06
TOTAL				1,051.73	7.18	1,048.91	128.03	1.50	129.53

DISTRICT : BEAUFORT
ROUTE NO : 01 JALAN KOTA KINABALU - SINDUMIN
LOCATION : CH80.860 (KM82.620) - LHS

SEALING OF CRACKS



BEFORE



IN PROGRESS



AFTER

DISTRICT : BEAUFORT
ROUTE NO : 01 JALAN KOTA KINABALU - SINDUMIN
LOCATION : CH84.060 (KM85.820) - RHS

SEALING OF CRACKS



BEFORE



IN PROGRESS



AFTER

LINTASAN RESOURCES SDN. BHD.
PAVEMENT REPAIR (SEALING OF CRACKS)
GRAND SUMMARY

MONTH: SEPTEMBER 2004

R01 - PAVEMENT REPAIR					
DISTRICT	ROUTE NO	ROAD NAME	SEALING OF CRACKS		
			Previous Mth	Current Mth	Cuumulative
			(m)	(m)	(m)
Kota Belud	01	Jalan Kota Kinabalu-Kudat	0.00	773.79	773.79
Kota Marudu	01	Jalan Kota Kinabalu-Kudat	* 69.00	887.00	956.00
Kudat	01	Jalan Kota Kinabalu-Kudat	0.00	0.00	0.00
Tuaran	01	Jalan Kota Kinabalu-Kudat	0.00	0.00	0.00
	22	Jalan Kota Kinabalu-Sandakan	0.00	0.00	0.00
	503	Jalan Berungis-Kota Belud	0.00	0.00	0.00
Kota Kinabalu	01	Jalan Kota Kinabalu-Kudat	423.44	0.00	423.44
	01	Jalan Kota Kinabalu-Sindumin	0.00	0.00	0.00
	606	Jalan Susur Sepangar Bay	0.00	0.00	0.00
	607	Jalan Masuk Ke Pelabuhan Baru	0.00	0.00	0.00
	608	Jalan Masuk ke Lapangan Terbang Lama	180.30	0.00	180.30
Penampang	01	Jalan Kota Kinabalu-Sindumin	1,761.30	587.50	2,348.80
	500	Jalan Kota Kinabalu-Keningau-Tenom	0.00	0.00	0.00
	501	Jalan Kota Kinabalu-Penampang-Lokkawi	0.00	0.00	0.00
Papar	01	Jalan Kota Kinabalu-Sindumin	1,004.20	687.40	1,691.60
Ranau	22	Jalan Kota Kinabalu-Sandakan	0.00	0.00	0.00
Tambunan	500	Jalan Kota Kinabalu-Keningau-Tenom	0.00	0.00	0.00
Keningau	500	Jalan Kota Kinabalu-Keningau-Tenom	0.00	0.00	0.00
Tenom	500	Jalan Kota Kinabalu-Keningau-Tenom	0.00	0.00	0.00
Beaufort	01	Jalan Kota Kinabalu-Sindumin	* 524.27	484.27	1,008.54
	502	Jalan Beaufort-Menumbok	0.00	0.00	0.00
Sipitang	01	Jalan Kota Kinabalu-Sindumin	* 2,634.32	0.00	2,634.32
Kuala Penyu	502	Jalan Beaufort-Menumbok	0.00	0.00	0.00
TOTAL			6,596.83	3,419.96	10,016.79

* Note: The brought forward balances from previous month were not reported previously.

LINTASAN RESOURCES SDN BHD (566483-H)
PRIVATISATION OF WEST COAST SABAH FEDERAL ROADS MAINTENANCE

SUMMARY FOR R01 - SEALING OF CRACK RECORD

Ending Period : 30th September 2004

ITEM	DISTRICT	ROUTE NO.	ROAD NAME	LENGTH (m)		
				PREVIOUS MONTH	CURRENT MONTH	CUM. MONTH
WEST COAST (NORTH)						
1	Kota Kinabalu	01	Jalan Kota Kinabalu - Kudat	423.44	-	423.44
2	Tuaran	01	Jalan Kota Kinabalu - Kudat	-	-	-
3	Tuaran	22	Jalan Kota Kinabalu - Sandakan	-	-	-
4	Tuaran	503	Jalan Berungis - Kota Belud	-	-	-
5	Kota Kinabalu	606	Jalan Susur Sepangar Bay	-	-	-
6	Kota Kinabalu	607	Jalan Masuk ke Pelabuhan Baru, K.K.	-	-	-
TOTAL:				423.44	-	423.44
WEST COAST (SOUTH)						
1	Kota Kinabalu	01	Jalan Kota Kinabalu - Sindumin	-	-	-
2	Penampang	01	Jalan Kota Kinabalu - Sindumin	1,761.30	587.50	2,348.80
3	Papar	01	Jalan Kota Kinabalu - Sindumin	1,004.20	687.40	1,691.60
4	Penampang	500	Jalan Kota Kinabalu - Keningau - Tenom	-	-	-
5	Penampang	501	Jalan Kota Kinabalu - Penampang - Lok Kawi	-	-	-
6	Kota Kinabalu	608	Jalan masuk ke Lapangan Terbang Lama, K.K.	180.30	-	180.30
TOTAL:				-	1,274.90	4,220.70
TOTAL LENGTH OF CRACK SEALED FOR (NORTH + SOUTH) =				423.44	1,274.90	4,644.14

LINTASAN RESOURCES SDN BHD (566483-H)
 PRIVATISATION OF WEST COAST SABAH FEDERAL ROADS MAINTENANCE

SUMMARY FOR R01 - SEALING OF CRACK RECORD

Ending Period : 30th September 2004

ITEM	DISTRICT	ROUTE NO.	ROAD NAME	LENGTH (m)		
				PREVIOUS MONTH	CURRENT MONTH	CUM. MONTH
1	Beaufort	01	Jalan Kota Kinabalu - Sindumin	524.27	484.27	1,008.54
2	Beaufort	502	Jalan Beaufort-Menumbok	-	-	-
3	Sipitang	01	Jalan Kota Kinabalu - Sindumin	2,634.32	-	2,634.32
4	Kuala Penyu	502	Jalan Beaufort-Menumbok	-	-	-
TOTAL LENGTH OF CRACK SEALED =				3,158.59	484.27	3,642.86

R01 PAVING BLOCKS REPAIR

Film Batch No: 1280/20



BEFORE

Film Batch No: 1280/22



IN PROGRESS

Film Batch No: 1280/24



AFTER

R01 PAVING BLOCKS REPAIR

Film Batch No: 1280/4



BEFORE

Film Batch No: 1280/5



IN PROGRESS

Film Batch No: 1280/6



AFTER

LINTASAN RESOURCES SDN BHD (566483-H)
PRIVATISATION OF WEST COAST SABAH FEDERAL ROADS MAINTENANCE

SUMMARY FOR R01 - REPAIR TO PAVING BLOCKS RECORD

Ending Period : 30th September 2004

ITEM	DISTRICT	ROUTE NO.	ROADNAME	AREA (m ²)		
				PREVIOUS MONTH	CURRENT MONTH	CUM. MONTH
1	Penampang	501	Jalan Kota Kinabalu - Penampang - Lok Kawi	111.70	21.77	133.47
TOTAL				111.70	21.77	133.47

R 02

**PENYENGGARAAN
BAHU JALAN
(SHOULDER)**

DISTRICT : KOTA BELUD
ROUTE NO : 01-JALAN KOTA KINABALU-KUDAT
LOCATION : CH:75.07-75.15

R02 SHOULDER



Film Batch No: P1010010

BEFORE



Film Batch No: P1010014

IN PROGRESS



Film Batch No: P1010015

AFTER

CS

DISTRICT : KOTA KINABALU
ROUTE NO : 01 JALAN KOTA KINABALU-KUDAT
LOCATION : CH8.130 (RHS)

R02 SHOULDER



Film Batch No: 15/9/4-012

BEFORE



Film Batch No: 15/9/4-013

IN PROGRESS



Film Batch No: 15/9/4-025

AFTER

R02: ROAD SHOULDER

FILM BATCH NO: 1670/0



BEFORE

FILM BATCH NO: 1670/13



IN PROGRESS

FILM BATCH NO: 1671/1



AFTER

R02: ROAD SHOULDER

FILM BATCH NO: 1698/3



BEFORE

FILM BATCH NO: 1698/4



IN PROGRESS

FILM BATCH NO: 1698/5



AFTER

LINTASAN RESOURCES SDN. BHD.

**SHOULDER REPAIR
GRAND SUMMARY**

MONTH: SEPTEMBER 2004

R02 - SHOULDER REPAIR								
DISTRICT	ROUTE NO	ROAD NAME	EARTH SHOULDER			GRAVEL SHOULDER		
			Previous	Current	Cumm.	Previous	Current	Cumm.
			(m ²)	(m ²)	(m ²)	(m ²)	(m ²)	(m ²)
Kota Belud	01	Jalan Kota Kinabalu-Kudat	188.81	-	188.81	183.99	221.43	405.42
Kota Marudu	01	Jalan Kota Kinabalu-Kudat	-	-	-	-	-	-
Kudat	01	Jalan Kota Kinabalu-Kudat	-	-	-	300.00	-	300.00
Tuaran	01	Jalan Kota Kinabalu-Kudat	60.00	-	60.00	1,520.00	-	1,520.00
	22	Jalan Kota Kinabalu-Sandakan	-	-	-	-	-	-
	503	Jalan Berungis-Kota Belud	-	-	-	-	-	-
Kota Kinabalu	01	Jalan Kota Kinabalu-Kudat	1,831.00	-	1,831.00	20,941.18	-	20,941.18
	01	Jalan Kota Kinabalu-Sindumin	-	-	-	75.75	-	75.75
	606	Jalan Susur Sepangar Bay	-	-	-	-	-	-
	607	Jalan Masuk Ke Pelabuhan Baru	-	-	-	-	-	-
	608	Jalan Masuk ke Lapangan Terbang Lama	-	-	-	-	-	-
Penampang	01	Jalan Kota Kinabalu-Sindumin	8,463.00	-	8,463.00	3,540.00	-	3,540.00
	500	Jalan Kota Kinabalu-Keningau-Tenom	3,190.00	-	3,190.00	11,217.77	-	11,217.77
	501	Jalan Kota Kinabalu-Penampang-Lokkawi	-	-	-	8,120.13	-	8,120.13
Papar	01	Jalan Kota Kinabalu-Sindumin	-	6,895.00	6,895.00	207.27	-	207.27
Ranau	22	Jalan Kota Kinabalu-Sandakan	1,650.40	284.50	1,934.90	1,338.73	-	1,338.73
Tambunan	500	Jalan Kota Kinabalu-Keningau-Tenom	2,495.19	3,276.00	5,771.19	2,126.43	-	2,126.43
Keningau	500	Jalan Kota Kinabalu-Keningau-Tenom	-	-	-	769.36	92.73	862.09
Tenom	500	Jalan Kota Kinabalu-Keningau-Tenom	-	-	-	88.20	-	88.20
Beaufort	01	Jalan Kota Kinabalu-Sindumin	27.00	-	27.00	93.24	1,450.00	1,543.24
	502	Jalan Beaufort-Menumbok	175.00	-	175.00	96.60	-	96.60
Sipitang	01	Jalan Kota Kinabalu-Sindumin	-	-	-	40.39	-	40.39
Kuala Penyu	502	Jalan Beaufort-Menumbok	-	-	-	119.70	-	119.70
TOTAL			18,080.40	10,455.50	28,535.90	50,778.74	1,764.16	52,542.90

LINTASAN RESOURCES SDN BHD (566483-11)
 PRIVATISATION OF WEST COAST SABAH FEDERAL ROADS MAINTENANCE

SUMMARY FOR R02 - SHOULDER REPAIR SUMMARY

Ending Period : 30 September 2004

ITEM	DISTRICT	ROUTE NO.	ROADNAME	EARTH SHOULDER AREA (m ²)			GRAVEL SHOULDER AREA (m ²)			GRASS INVENTORY		ROAD SHOULDER DEFECT (m ²)
				PREVIOUS MONTH	CURRENT MONTH	CUM. MONTH	PREVIOUS MONTH	CURRENT MONTH	CUM. MONTH	EARTH SHOULDER ESTIMATE QTY (m ²)	GRAVEL SHOULDER ESTIMATE QTY (m ²)	
1	KOTA BELUD	01	<u>WEST COAST (NORTH)</u> Jalan Kota Kinabalu - Kudat	188.81	-	188.81	183.99	221.43	405.42	325,804.50	1,225.40	23,342.70
2	KOTA MARUDU	01	Jalan Kota Kinabalu - Kudat							184,545.00	14,474.50	18,724.48
3	KUDAT	01	Jalan Kota Kinabalu - Kudat				300.00	-	300.00	313,817.50	5,445.60	911.00
TOTAL				188.81	-	188.81	483.99	221.43	705.42	824,167.00	21,145.50	42,978.18

LINTASAN RESOURCES SDN BHD (566483-H)
PRIVATISATION OF WEST COAST SABAH FEDERAL ROADS MAINTENANCE

SUMMARY FOR R02 - SHOULDER REPAIR SUMMARY

Ending Period : 30th September 2004

ITEM	DISTRICT	ROUTE NO.	ROADNAME	EARTH SHOULDER AREA (m ²)		GRAVEL SHOULDER AREA (m ²)					
				PREVIOUS MONTH	CURRENT MONTH	PREVIOUS MONTH	CURRENT MONTH	PREVIOUS MONTH	CUM. MONTH		
			<u>WEST COAST (NORTH)</u>								
1	Kota Kinabalu	01	Jalan Kota Kinabalu - Kudat	1,831.00	-	1,831.00	20,941.18	-	20,941.18		20,941.18
2	Tuaran	01	Jalan Kota Kinabalu - Kudat	60.00	-	60.00	1,520.00	-	1,520.00		1,520.00
			TOTAL	1,891.00	-	1,891.00	22,461.18	-	22,461.18		22,461.18
			<u>WEST COAST (SOUTH)</u>								
1	Kota Kinabalu	01	Jalan Kota Kinabalu - Sindumin	-	-	-	75.75	-	75.75		75.75
2	Penampang	01	Jalan Kota Kinabalu - Sindumin	8,463.00	-	8,463.00	3,540.00	-	3,540.00		3,540.00
3	Papar	01	Jalan Kota Kinabalu - Sindumin	-	6,895.00	6,895.00	207.27	-	207.27		207.27
4	Penampang	501	Jalan KK - Penampang -Lok Kawi	-	-	-	8,120.13	-	8,120.13		8,120.13
5	Penampang	500	Jalan KK - Keningau - Tenom	3,190.00	-	3,190.00	11,217.77	-	11,217.77		11,217.77
			TOTAL	11,653.00	6,895.00	18,548.00	23,160.92	-	23,160.92		23,160.92

LINTASAN RESOURCES SDN BHID (566483-11)
 PRIVATISATION OF WEST COAST SABAH FEDERAL ROADS MAINTENANCE

SUMMARY FOR R02 - SHOULDER REPAIR RECORD

Ending Period : 30 September 2004

ITEM	DISTRICT	ROUTE NO.	ROADNAME	EARTH SHOULDER - AREA (m ²)			GRAVEL SHOULDER - AREA (m ²)		
				PREVIOUS MONTH	CURRENT MONTH	CUM. MONTH	PREVIOUS MONTH	CURRENT MONTH	CUM. MONTH
1	Ranau	22	Jalan Kota Kinabalu - Sandakan	1,650.40	284.50	1,934.90	1,338.73	-	1,338.73
TOTAL				1,650.40	284.50	1,934.90	1,338.73	-	1,338.73

LINTASAN RESOURCES SDN BHD (566483-H)
 PRIVATISATION OF WEST COAST SABAH FEDERAL ROADS MAINTENANCE

SUMMARY FOR R02 - SHOULDER REPAIR SUMMARY

Ending Period : 30TH SEPTEMBER 2004

ITEM	DISTRICT	ROUTE NO.	ROADNAME	EARTH SHOULDER AREA (m2)			GRAVEL SHOULDER AREA (m2)			INVENTORY		ROAD SHOULDER SHOULDER DEFECTS (M2)
				PREVIOUS MONTH	CURRENT MONTH	CUM. MONTH	PREVIOUS MONTH	CURRENT MONTH	CUM. MONTH	EARTH SHOULDER ESTIMATE QTY (m2)	GRAVEL SHOULDER ESTIMATE QTY (m2)	
1	Tambunan	500	Jalan K.K - Keningau - Tenom	2495.19	3276.00	5771.19	2126.43	0.00	2126.43	187,150.00	143545	41,772.50
2	Keningau	500	Jalan K.K - Keningau - Tenom	0.00	0.00	0.00	769.36	92.73	862.09	67,600.00	114,620.00	18,785.70
3	Tenom	500	Jalan K.K - Keningau - Tenom	0.00	0.00	0.00	88.20	0.00	88.20	50,750.00	117,000.00	8,808.44
TOTAL				2,495.19	3,276.00	5,771.19	2,984.00	92.73	3,076.7	305,500.00	375,165.00	69,366.64

106

LINTASAN RESOURCES SDN BHD (566483-H)
 PRIVATISATION OF WEST COAST SABAH FEDERAL ROADS MAINTENANCE

SUMMARY FOR R02 - SHOULDER REPAIR RECORD

Ending Period : 30th SEPTEMBER 2004

ITEM	DISTRICT	ROUTE NO.	ROADNAME	AREA (m ²) - Earth Shoulder		AREA (m ²) - Gravel Shoulder	
				PREVIOUS MONTH	CURRENT MONTH	PREVIOUS MONTH	CURRENT MONTH
1	Beaufort	01	Jalan Kota Kinabalu - Sindumin	27.00	0.00	93.24	1450.00
2	Beaufort	502	Jalan Beaufort-Menumbok	175.00	0.00	96.60	0.00
3	Sipitang	01	Jalan Kota Kinabalu - Sindumin	0.00	0.00	40.39	0.00
4	Kuala Penyu	502	Jalan Beaufort-Menumbok	0.00	0.00	119.70	0.00
TOTAL				202.00	-	349.93	1,450.00
						1,799.93	1,799.93

R 03

**PEMOTONGAN
RUMPUT
(GRASS CUTTING)**

DISTRICT : KOTA MARUDU
ROUTE : 01-JALAN KOTA KINABALU - KUDAT
LOCATION : CH 137.530

R03 GRASS CUTTING



Film Batch No: P1010005

BEFORE



Film Batch No: P1010012

IN PROGRESS



Film Batch No: P1010014

AFTER

116

R03 GRASS CUTTING

Film Batch No: 010



BEFORE

Film Batch No: 011



IN PROGRESS

Film Batch No: 012



AFTER

DISTRICT : PENAMPANG
ROUTE NO : 501 JALAN KK-PENAMPANG-LOK KAWI
LOCATION : CH12.50 (LHS)

R03 GRASS CUTTING



Film Batch No: 1494-DSC987

BEFORE



Film Batch No: 1494-DSC989

IN PROGRESS



Film Batch No: 1494-DSC996

AFTER

118

DISTRICT : PAPAR
ROUTE NO : 01 JALAN KOTA KINABALU-SINDUMIN
LOCATION : CH43.870

R03 GRASS CUTTING



Film Batch No: 21/9/4-007jpg

BEFORE



Film Batch No: 21/9/4-006jpg

IN PROGRESS



Film Batch No: 21/9/4-008jpg

AFTER

DISTRICT : TENOM
ROUTE NO : 500 JALAN KOTA KINABALU-KENINGAU-TENOM
LOCATION : CH153.400 (LHS)

R03 GRASS CUTTING



Film Batch No: R03-1109-5

BEFORE



Film Batch No: R03-1109-6

IN PROGRESS



Film Batch No: R03-1109-7

AFTER

170

DISTRICT : BEAUFORT
ROUTE NO : 01 JALAN KOTA KINABALU - SINDUMIN
LOCATION : CH75.475 (KM77.235) - LHS

R03 GRASS CUTTING



BEFORE



IN PROGRESS



AFTER

727

DISTRICT : BEAUFORT
ROUTE NO : 01 JALAN KOTA KINABALU - SINDUMIN
LOCATION : CH91.750 (KM93.510) - RHS

R03 GRASS CUTTING



BEFORE



IN PROGRESS



AFTER

122

DISTRICT : KUALA PENYU
ROUTE NO : 502 JALAN BEAUFORT - MENUK
LOCATION : CH33.450 (KM33.450) - LHS

R03 GRASS CUTTING



BEFORE



IN PROGRESS



AFTER

123

R 04

**PENYENGGARAAN
PERABOT JALAN
(ROAD FURNITURE)**

DISTRICT : KOTA BELUD
ROUTE NO : 01 - JALAN KOTA KINABALU-KUDAT
LOCATION : CH 102.470

R04 ROAD FURNITURE



Film Batch No: P1010066

BEFORE



Film Batch No: P1010067

IN PROGRESS



Film Batch No: P1010070

AFTER

125

DISTRICT : KOTA BELUD
ROUTE NO : 01 - JALAN KOTA KINABALU-KUDAT
LOCATION : CH 110.920

R04 ROAD FURNITURE



Film Batch No: P1010071

BEFORE



Film Batch No: P1010073

IN PROGRESS



Film Batch No: P1010075

AFTER

DISTRICT : KOTA KINABALU
ROUTE NO : 01 JALAN KOTA KINABALU-SINDUMIN
LOCATION : Ch6.090

R04 ROAD FURNITURE



Film Batch No: 21/9/4-013jpg

BEFORE



Film Batch No: 21/9/4-014jpg

IN PROGRESS



Film Batch No: 21/9/4-015jpg

AFTER

120

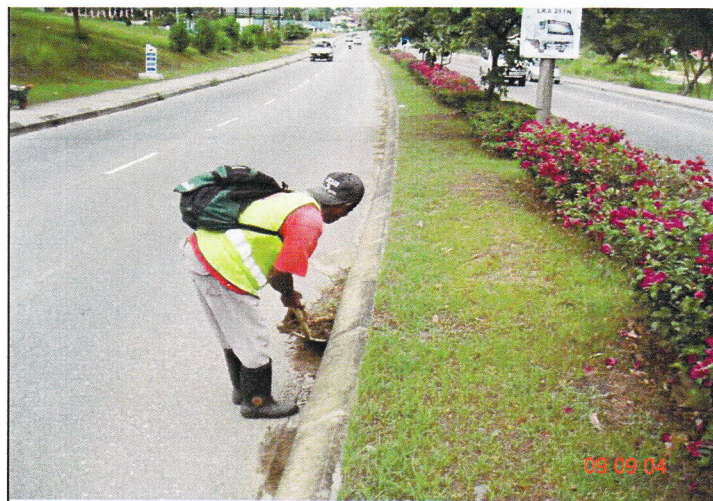
DISTRICT : KENINGAU
ROUTE NO : 500 JALAN KOTA KINABALU-KENINGAU-TENOM
LOCATION : CH120.080 (MEDIAN)

R04: ROAD FURNITURE



Film Batch No: R04-0909-1

BEFORE



Film Batch No: R04-0909-2

IN PROGRESS



Film Batch No: R04-0909-3

AFTER

128

DISTRICT : BEAUFORT
ROUTE NO : 01 JALAN KOTA KINABALU - SINDUMIN
LOCATION : CH77.330 (KM79.090) - LHS

R04 ROAD FURNITURE



BEFORE



IN PROGRESS



AFTER

129

DISTRICT : KUALA PENYU
ROUTE NO : 502 JALAN BEAUFORT - MENUK
LOCATION : CH32.350 (KM32.350) - RHS

R04 ROAD FURNITURE



BEFORE



IN PROGRESS



AFTER

R 05

**PENYENGGARAAN
JAMBATAN & PEMBENTUNG
(BRIDGES & CULVERTS)**

DISTRICT : KOTA BELUD
ROUTE NO : 01-JALAN KOTA KINABALU - KUDAT
LOCATION : CH:61.245

R05 CULVERT



Film Batch No: P1010043

BEFORE



Film Batch No: P1010042

IN PROGRESS



Film Batch No: P1010040

AFTER

132

R05 CULVERTS

Film Batch No: 1298/11



BEFORE

Film Batch No: 1298/12



IN PROGRESS

Film Batch No: 1298/13



AFTER

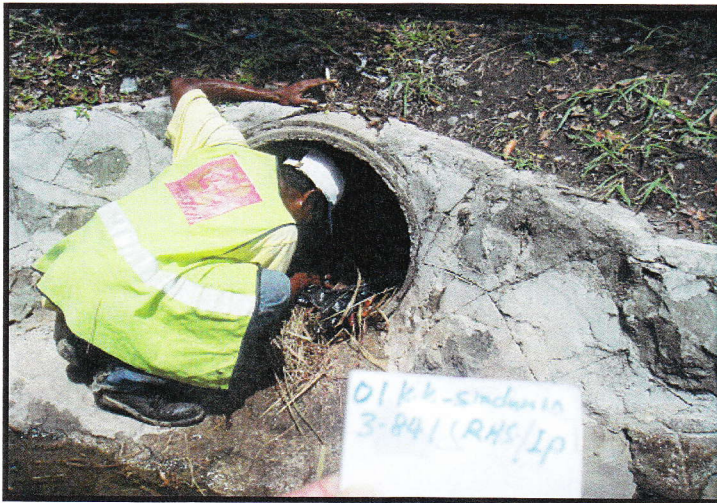
DISTRICT : KOTA KINABALU
ROUTE NO : 01 JALAN KOTA KINABALU-SINDUMIN
LOCATION : CH3.841 (RHS)

R05 CULVERT



Film Batch No: 15/9/4-001

BEFORE



Film Batch No: 15/9/4-002

IN PROGRESS



Film Batch No: 15/9/4-003

AFTER

DISTRICT : PENAMPANG
ROUTE NO : 501 JALAN KK-PENAMPANG-LOK KAWI
LOCATION : CH15.540

R05 CULVERT



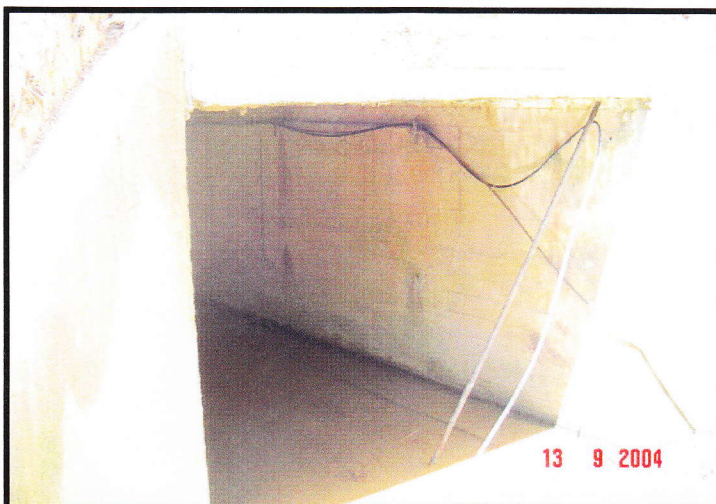
Film Batch No: 1494-DSC965

BEFORE



Film Batch No: 1494-DSC966

IN PROGRESS



Film Batch No: 1494-DSC988

AFTER

135

R05 CULVERT

Film Batch No: 1260/12



BEFORE

Film Batch No: 1260/13



IN PROGRESS

Film Batch No: 1260/18



AFTER

DISTRICT : PAPAR
ROUTE NO : 01 JALAN KOTA KINABALU-SINDUMIN
LOCATION : Ch61.340

R05 CULVERT



Film Batch No: 21/9/4-032jpg

BEFORE



Film Batch No: 21/9/4-033jpg

IN PROGRESS



Film Batch No: 21/9/4-004jpg

AFTER

R05 BRIDGES & CULVERT

FILM BATCH NO: 3304/6



BEFORE

FILM BATCH NO: 1820A/0



IN PROGRESS

FILM BATCH NO: 1820A/1



AFTER

DISTRICT : KENINGAU
ROUTE NO : 500 JALAN KOTA KINABALU-KENINGAU-TENOM
LOCATION : CH116.550

R05 BRIDGES & CULVERTS



Film Batch No: R05-1109-1

BEFORE



Film Batch No: R05-1109-2

IN PROGRESS



Film Batch No: R05-1109-3

AFTER

128

DISTRICT : KENINGAU
ROUTE NO : 500 JALAN KOTA KINABALU-KENINGAU-TENOM
LOCATION : CH120.300

R05 BRIDGES & CULVERTS



Film Batch No: R05-1109-5

BEFORE



Film Batch No: R05-1109-6

IN PROGRESS



Film Batch No: R05-1109-7

AFTER

120

R05: BRIDGES & CULVERTS

FILM BATCH NO: 1671/10



BEFORE

FILM BATCH NO: 1671/11



IN PROGRESS

FILM BATCH NO: 1671/12



AFTER

DISTRICT : TENOM

ROUTE NO. : 500 JALAN KK-KGU-TENOM

LOCATION : CH161.150

R05: BRIDGES & CULVERTS

FILM BATCH NO: 1671/7



BEFORE

FILM BATCH NO: 1671/8



IN PROGRESS

FILM BATCH NO: 1671/9



AFTER

150

R05: BRIDGES & CULVERTS

FILM BATCH NO: 1671/7



BEFORE

FILM BATCH NO: 1671/8



IN PROGRESS

FILM BATCH NO: 1671/9



AFTER

152

DISTRICT : BEAUFORT
ROUTE NO : 01 JALAN KOTA KINABALU - SINDUMIN
LOCATION : CH72.510 (KM74.270) - RHS

R05 BRIDGE



BEFORE



IN PROGRESS



AFTER

153

DISTRICT : BEAUFORT
ROUTE NO : 01 JALAN KOTA KINABALU - SINDUMIN
LOCATION : CH89.470 (KM91.230)

R05 BRIDGE



BEFORE



IN PROGRESS



AFTER

144

DISTRICT : BEAUFORT
ROUTE NO : 01 JALAN KOTA KINABALU - SINDUMIN
LOCATION : CH110.341 (KM112.101)

R05 BRIDGE



BEFORE



IN PROGRESS



AFTER

25

DISTRICT : SIPITANG
ROUTE NO : 01 JALAN KOTA KINABALU - SINDUMIN
LOCATION : CH138.215 (KM139.975)

R05 CULVERT



BEFORE



IN PROGRESS



AFTER

DISTRICT : KOTA BELUD
ROUTE NO : 01-JALAN KOTA KINABALU - KUDAT
LOCATION : CH 60.370

R07 DRAINAGE



Film Batch No: P1010003

BEFORE



Film Batch No: P1010006

IN PROGRESS



Film Batch No: P1010039

AFTER

DISTRICT : PENAMPANG
ROUTE NO : 501 JALAN KK-PENAMPANG-LOK KAWI
LOCATION : CH9.40 (LHS)

R07 DRAINAGE



Film Batch No: 1494-DSC975

BEFORE



Film Batch No: 1494-DSC986

IN PROGRESS



Film Batch No: 1494-DSC997

AFTER

R07 DRAINAGE

FILM BATCH NO: 3439/10



BEFORE

FILM BATCH NO: 3439/11



IN PROGRESS

FILM BATCH NO: 3439/12



AFTER

DISTRICT : TAMBUNAN
ROUTE NO : 500 JALAN KOTA KINABALU-KENINGAU-TENOM
LOCATION : CH70.600 (RHS)

R07 DRAINAGE



Film Batch No: R07-0309/38

BEFORE



Film Batch No: R07-0309/39

IN PROGRESS



Film Batch No: R07-0309/40

AFTER

157

DISTRICT : TAMBUNAN
ROUTE NO : 500 JALAN KOTA KINABALU-KENINGAU-TENOM
LOCATION : CH71.500 (RHS)

R07 DRAINAGE



Film Batch No: R07-0309/1

BEFORE



Film Batch No: R07-0309/2

IN PROGRESS



Film Batch No: R07-0309/3

AFTER

152

DISTRICT : KENINGAU
ROUTE NO : 500 JALAN KOTA KINABALU-KENINGAU-TENOM
LOCATION : CH120.100 (LHS)

R07 DRAINAGE



Film Batch No: R07-0909-10

BEFORE



Film Batch No: R07-0909-11

IN PROGRESS



Film Batch No: R07-0909-12

AFTER

153

DISTRICT : KENINGAU
ROUTE NO : 500 JALAN KOTA KINABALU-KENINGAU-TENOM
LOCATION : CH131.250 (RHS)

R07 DRAINAGE



Film Batch No: R07-1109-10

BEFORE



Film Batch No: R07-1109-11

IN PROGRESS



Film Batch No: R07-1109-12

AFTER

159

R07: DRAINAGE

FILM BATCH NO: 1670/6



BEFORE

FILM BATCH NO: 1670/7



IN PROGRESS

FILM BATCH NO: 1670/9



AFTER

R07: DRAINAGE



FILM BATCH NO: 1463/10

BEFORE



FILM BATCH NO: 1463/2

IN PROGRESS



FILM BATCH NO: 1463/11

AFTER

DISTRICT : BEAUFORT
ROUTE NO : 01 JALAN KOTA KINABALU - SINDUMIN
LOCATION : CH82.620 (KM84.380) - LHS

R07 DRAINAGE



BEFORE



IN PROGRESS



AFTER

157

DISTRICT : BEAUFORT
ROUTE NO : 01 JALAN KOTA KINABALU - SINDUMIN
LOCATION : CH92.250 (KM94.010) - RHS

R07 DRAINAGE



BEFORE



IN PROGRESS



AFTER

108

DISTRICT : BEAUFORT
ROUTE NO : 01 JALAN KOTA KINABALU - SINDUMIN
LOCATION : CH94.662 (KM96.422) - LHS

R07 DRAINAGE



BEFORE



IN PROGRESS



159

B

**PEMERIKSAAN
RUTIN
(INSPECTION)**

DISTRICT : BEAUFORT
ROUTE NO : 01 JALAN KOTA KINABALU - SINDUMIN
LOCATION : CH103.942 (KM105.702) - RHS

(B) ROUTINE INSPECTION



BEFORE



AFTER

B: ROUTINE INSPECTION



BEFORE



IN PROGRESS



AFTER

DISTRICT : BEAUFORT
ROUTE NO : 502 JALAN BEAUFORT - MENUK
LOCATION : CH6.180 (KM6.180) - LHS

(B) ROUTINE INSPECTION



BEFORE



AFTER

DISTRICT : BEAUFORT
ROUTE NO : 01 JALAN KOTA KINABALU - SINDUMIN
LOCATION : CH84.470 (KM86.230) - RHS

(B) ROUTINE INSPECTION



BEFORE



AFTER

164

DISTRICT : BEAUFORT
ROUTE NO : 01 JALAN KOTA KINABALU - SINDUMIN
LOCATION : CH84.470 (KM86.230) - RHS

(B) ROUTINE INSPECTION



BEFORE



AFTER

159