

LP&B

**PENSWASTAAN PENYENGGARAAN
JALAN-JALAN PERSEKUTUAN DI SABAH
(PANTAI BARAT & PENDALAMAN)**



THE GOVERNMENT OF MALAYSIA

LAPORAN KEMAJUAN BULANAN

OGOS 2004



Jabatan Kerja Raya, Negeri Sabah

Kontraktor : Lintasan Resources Sdn. Bhd. 566483-H

LINTASAN RESOURCES SDN BHD

PENSWASTAAN PENYENGGARAAN JALAN-JALAN
PERSEKUTUAN DI SABAH (PANTAI BARAT & PENDALAMAN)

LAPORAN KEMAJUAN BULANAN OGOS 2004

ISI KANDUNGAN

Bil: **PERKARA**

1. Laporan Eksekutif Projek
2. Carta Organisasi Syarikat
3. Lokasi Jalan Persekutuan
4. Ringkasan Laporan Kemajuan Bulanan
5. R 01 - Penyenggaraan Permukaan Jalan
6. R 02 - Penyenggaraan Bahu Jalan
7. R 03 - Pemotongan Rumput
8. R 04 - Penyenggaraan Perabot Jalan
9. R 05 - Penyenggraan Jambatan dan Pembentung
10. R 07 - Penyenggraan Longkang
11. B - Pemeriksaan Rutin
12. Kerja-Kerja Kecemasan
13. Kerja-Kerja Berkala

**LAPORAN
EKSEKUTIF PROJEK**

LAPORAN EKSEKUTIF PROJEK

TAJUK KONTRAK	:	PENSWASTAAN PENYENGGARAAN JALAN-JALAN PERSEKUTUAN DI SABAH (PANTAI BARAT & PENDALAMAN)
KLIEN	:	JABATAN KERJA RAYA, SABAH
SYARIKAT	:	LINTASAN RESOURCES SDN. BHD. Lot 1, Block A, Ground Floor, Wisma TP Mile 1 ½, Tuaran Road 88400 Kota Kinabalu, Sabah, Malaysia.
TEMPOH	:	15 TAHUN
TARIKH MULA	:	01hb September 2003
TARIKH TAMAT	:	31hb August 2018
KAWASAN	:	PANTAI BARAT & PENDALAMAN
JALAN TERLIBAT	:	Semua Jalan-Jalan Persekutuan Yang Diwartakan Dibawah Akta Jalan Persekutuan 1959
PANJANG JALAN	:	764.85 Kilometer
KATEGORI JALAN	:	a) Jalan Protocol b) Jalan Utama c) Jalan Sekunder
SKOP KERJA	:	a) Penyelenggaraan Rutin b) Kerja-Kerja Kecemasan

RINGKASAN LAPORAN :

ROUTINE MAINTENANCE

Routine Road Maintenance work continued unabated in accordance to the JKR approved Programme. We believe we had carried out our work meeting the Agreed Performance Standard and to the satisfaction of the Government. For the month, greater emphasis had been placed on shoulder repair and crack sealing.

PERIODIC MAINTENANCE

As Works Orders were issued by JKR for the 2004 Periodic Programme, works were started in tandem. Presently, Pavement and Non-pavement works are concurrently ongoing in Kota Kinabalu, Penampang, Ranau and Beaufort. Preparation is being made to start work in the District of Tambunan. Sampling and quality control testing are being carried out according to the Quality Control Test Plans submitted to JKR earlier.

The 2005 Proposed Periodic Maintenance Programme is in the final stage of completion and will be submitted to JKR shortly. The scope and priority for the proposed works are determined in close consultation and discussion with the UPPJs concerned subject to further adjustment and approval by the Government.

EMERGENCY WORK

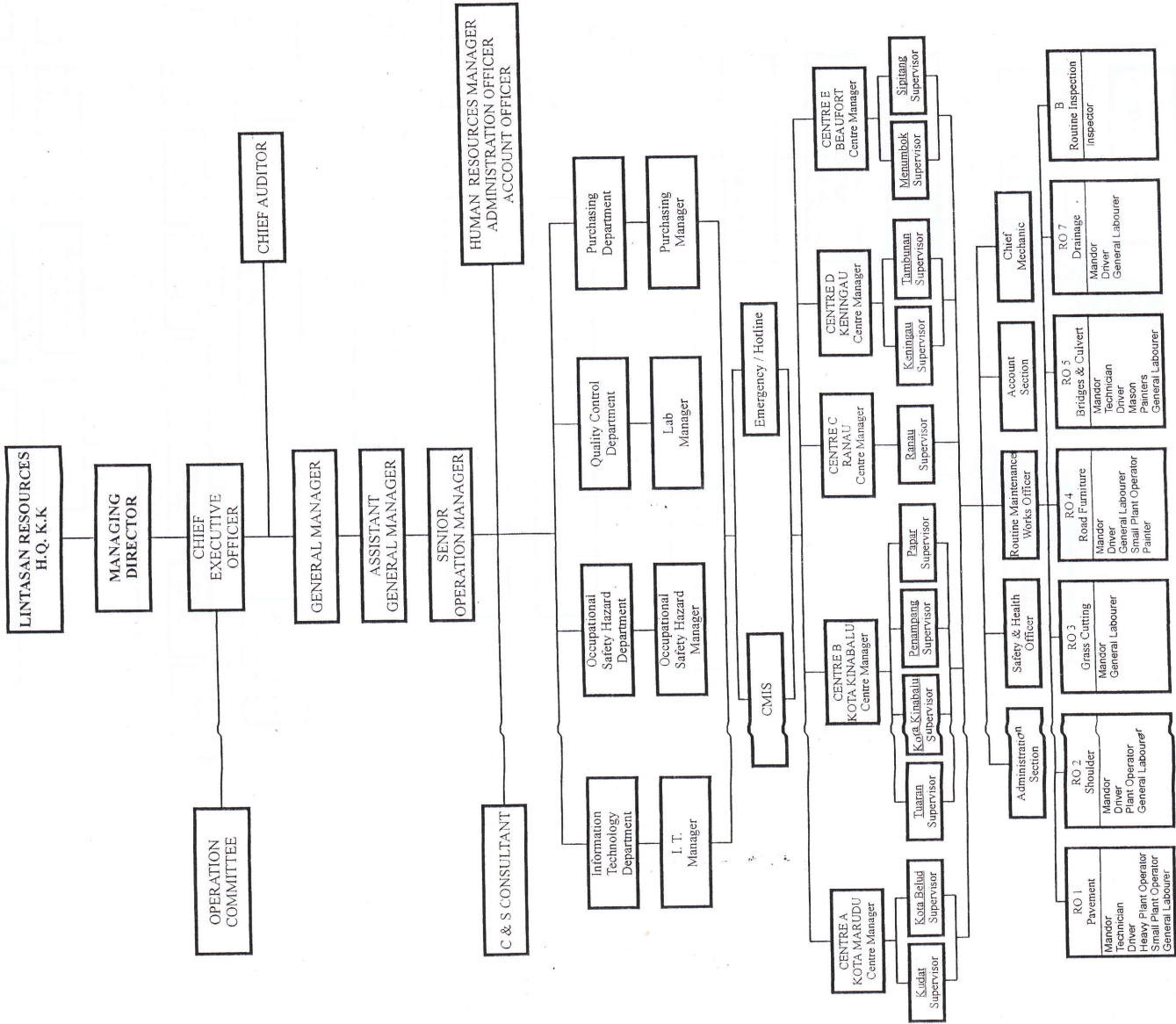
Though there had been little or no landslide during the month, the Concessionaire continued to be involved in emergency work by way of clearing of fallen trees and repair to pavement that posed danger to motorists.

31/08/2004

**CARTA
ORGANISASI SYARIKAT**

LINTASAN RESOURCES SDN. BHD.

ORGANISATION CHART FOR SABAH FEDERAL ROAD MAINTENANCE



**RINGKASAN
LAPORAN KEMAJUAN
BULANAN**

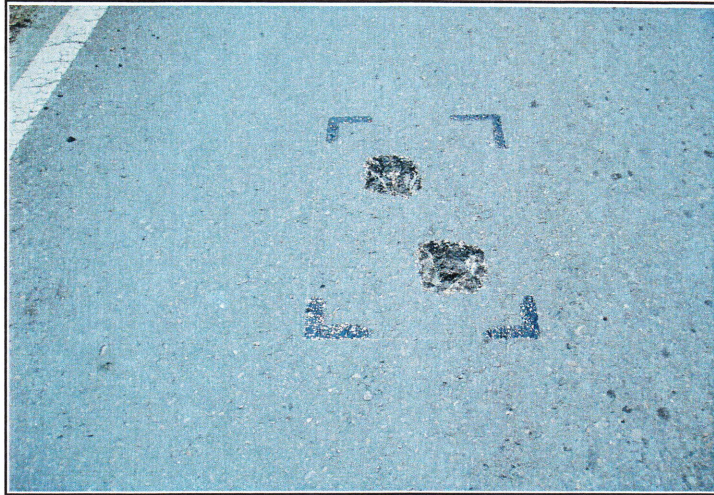
KERJA-KERJA RUTIN
(ROUTINE MAINTENANCE)

R 01

**PENYENGGARAAN
PERMUKAAN JALAN
(POTHOLE PATCHING)**

DISTRICT : KOTA BELUD
ROUTE NO : 01-JALAN KOTA KINABALU-KUDAT
LOCATION : CH104.570

R01 PAVEMENT



Film Batch No: P8250019

BEFORE



Film Batch No: P8250024

IN PROGRESS



Film Batch No: P8250025

AFTER

DISTRICT : KOTA MARUDU
ROUTE NO : 01-JALAN KOTA KINABALU-KUDAT
LOCATION : CH117.570

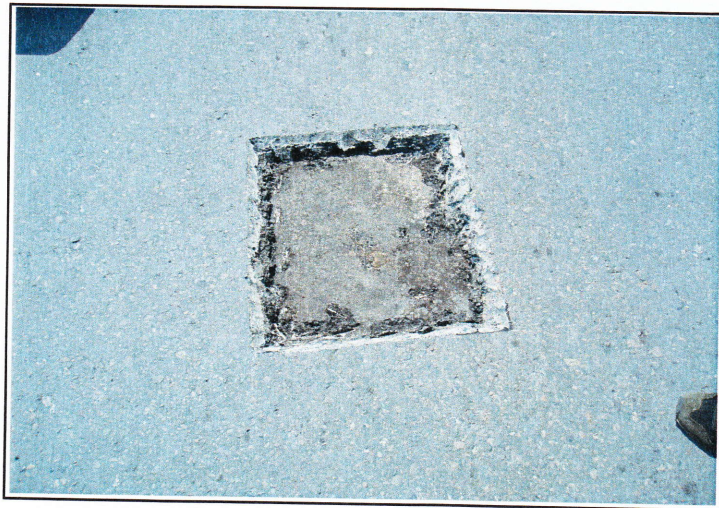
R01 PAVEMENT



Film Batch No: P8170001

6

BEFORE



Film Batch No: P8170002

5

IN PROGRESS



Film Batch No: P8170003

6

AFTER

16

R01 PAVEMENT

Film Batch No: 1202/7



BEFORE

Film Batch No: 1202/8



IN PROGRESS

Film Batch No: 1202/9



AFTER

R01: PAVEMENT

FILM BATCH NO: 4693/4



BEFORE

FILM BATCH NO: 4693/5



IN PROGRESS

FILM BATCH NO: 4693/7



AFTER

DISTRICT : SIPITANG
ROUTE NO : 01 JALAN KOTA KINABALU - SINDUMIN
LOCATION : CH139.545 (KM141.305) - RHS

R01 PAVEMENT



13

BEFORE



14

IN PROGRESS



15

AFTER

17

DISTRICT : SIPITANG
ROUTE NO : 01 JALAN KOTA KINABALU - SINDUMIN
LOCATION : CH156.300 (KM158.060) - RHS

SEALING OF CRACKS



BEFORE



IN PROGRESS



AFTER

16

17

18

19

LINTASAN RESOURCES SDN. BHD.
PAVEMENT REPAIR (POTHOLE PATCHING)
GRAND SUMMARY

MONTH: AUGUST 2004

R01 - PAVEMENT REPAIR					
DISTRICT	ROUTE NO.	ROAD NAME	PREMIX FOR POTHOLE		
			Previous Mth	Current Mth	Cummulative
			(Ton)	(Ton)	(Ton)
Kota Belud	01	Jalan Kota Kinabalu-Kudat	162.54	14.69	177.23
Kota Marudu	01	Jalan Kota Kinabalu-Kudat	7.55	0.81	8.36
Kudat	01	Jalan Kota Kinabalu-Kudat	10.12	0.00	10.12
Tuaran	01	Jalan Kota Kinabalu-Kudat	396.58	26.02	422.60
	22	Jalan Kota Kinabalu-Sandakan	94.44	3.23	97.67
	503	Jalan Berungis-Kota Belud	16.38	0.00	16.38
Kota Kinabalu	01	Jalan Kota Kinabalu-Kudat	471.68	31.89	503.57
	01	Jalan Kota Kinabalu-Sindumin	13.51	1.24	14.75
	606	Jalan Susur Sepangar Bay	48.46	0.95	49.41
	607	Jalan Masuk Ke Pelabuhan Baru	2.42	0.00	2.42
	608	Jalan K Masuk Ke Lapangan Terbang Lama	5.27	3.20	8.47
Penampang	01	Jalan Kota Kinabalu-Sindumin	13.32	6.29	19.61
	500	Jalan Kota Kinabalu-Keningau-Tenom	189.16	65.36	254.52
	501	Jalan Kota Kinabalu-Penampang-Lok Kawi	93.33	28.65	121.98
Papar	01	Jalan Kota Kinabalu-Sindumin	367.53	25.34	392.87
Ranau	22	Jalan Kota Kinabalu-Sandakan	396.58	39.32	435.90
Tambunan	500	Jalan Kota Kinabalu-Keningau-Tenom	68.13	21.13	89.26
Keningau	500	Jalan Kota Kinabalu-Keningau-Tenom	2.54	2.11	4.65
Tenom	500	Jalan Kota Kinabalu-Keningau-Tenom	3.45	0.00	3.45
Beaufort	01	Jalan Kota Kinabalu-Sindumin	41.71	0.27	41.98
	502	Jalan Beaufort-Menumbok	39.27	0.00	39.27
Sipitang	01	Jalan Kota Kinabalu-Sindumin	29.49	1.23	30.72
Kuala Penyu	502	Jalan Beaufort-Menumbok	16.06	0.00	16.06
TOTAL			2,489.52	271.73	2,761.25

LINTASAN RESOURCES SDN BHD (566483-H)
PRIVATISATION OF WEST COAST SABAH FEDERAL ROADS MAINTENANCE

SUMMARY FOR R01 - POTHoles PATCHING RECORD

Ending Period : 31st August 2004

ITEM	DISTRICT	ROUTE NO.	ROAD NAME	AREA (m ²)			PREMIX QUANTITY (TON)		
				PREVIOUS MONTH	CURRENT MONTH	CUM. MONTH	PREVIOUS MONTH	CURRENT MONTH	CUM. MONTH
WEST COAST (NORTH)									
1	Kota Kinabalu	01	Jalan Kota Kinabalu - Kudat	3,270.43	260.49	3,530.92	471.68	31.89	503.57
2	Tuaran	01	Jalan Kota Kinabalu - Kudat	2,686.13	216.81	2,902.94	396.58	26.02	422.60
3	Tuaran	22	Jalan Kota Kinabalu - Sandakan	692.36	20.65	713.01	94.44	3.23	97.67
4	Tuaran	503	Jalan Berungis - Kota Belud	102.69	-	102.69	16.38	-	16.38
5	Kota Kinabalu	606	Jalan Susur Sepangar Bay	274.36	7.85	282.21	48.46	0.95	49.41
6	Kota Kinabalu	607	Jalan Masuk ke Pelabuhan Baru, K.K.	16.94	-	16.94	2.42	-	2.42
TOTAL:				7,042.91	505.80	7,548.71	1,029.96	62.09	1,092.05
WEST COAST (SOUTH)									
1	Kota Kinabalu	01	Jalan Kota Kinabalu - Sindumin	88.26	10.31	98.57	13.51	1.24	14.75
2	Penampang	01	Jalan Kota Kinabalu - Sindumin	111.53	47.25	158.78	13.32	6.29	19.61
2	Papar	01	Jalan Kota Kinabalu - Sindumin	2,702.56	197.85	2,900.41	367.53	25.34	392.87
3	Penampang	500	Jalan Kota Kinabalu - Keningau - Tenom	1,410.39	242.37	1,652.76	189.16	65.36	254.52
4	Penampang	501	Jalan Kota Kinabalu - Penampang - Lok Kawi	671.12	158.90	830.02	93.33	28.65	121.98
5	Kota Kinabalu	608	Jalan masuk ke Lapangan Terbang Lama, K.K.	40.30	25.05	65.35	5.27	3.20	8.47
TOTAL:				5,024.16	681.73	5,705.89	682.12	130.08	812.20
TOTAL FOR (NORTH + SOUTH) =				12,067.07	1,187.53	13,254.60	1,712.08	192.17	1,904.25

LINTASAN RESOURCES SDN BHD (566483-H)
 PRIVATISATION OF WEST COAST SABAH FEDERAL ROADS MAINTENANCE

SUMMARY FOR R01 - POTHOLE PATCHING RECORD

Ending Period : 31 August 2004

ITEM	DISTRICT	ROUTE NO.	ROADNAME	AREA (m ²)		PREMIX QUANTITY (TON)			INVENTORY CARRIAGEWAY ESTIMATE QTY (m ³)	
				PREVIOUS MONTH	CURRENT MONTH	CUM. MONTH	PREVIOUS MONTH	CURRENT MONTH		CUM. MONTH
1	KOTA BELUD	01	Jalan Kota Kinabalu - Kudat	1,343.77	122.65	1,466.42	162.54	14.69	177.23	313,971.000
2	KOTA MARUDU	01	Jalan Kota Kinabalu - Kudat	62.27	6.75	69.02	7.55	0.81	8.36	180,993.00
3	KUDAT	01	Jalan Kota Kinabalu - Kudat	84.25	-	84.25	10.12	-	10.12	308,338.00
TOTAL				1,490.29	129.40	1,619.69	180.21	15.50	195.71	803,302.00

2

LINTASAN RESOURCES SDN BHD (566483-H)
 PRIVATISATION OF WEST COAST SABAH FEDERAL ROADS MAINTENANCE

SUMMARY FOR R01 - POTHOLE PATCHING RECORD

Ending Period : 30 AUGUST 2004

ITEM	DISTRICT	ROUTE NO.	ROADNAME	AREA (m ²)			PREMIX QUANTITY (TON)			INVENTORY CARRIAGEWAY ESTIMATE QTY (m ²)
				PREVIOUS MONTH	CURRENT MONTH	CUM. MONTH	PREVIOUS MONTH	CURRENT MONTH	CUM. MONTH	
1	Tambunan	500	Jalan Kota Kinabalu - Keningau - Tenom	525.89	144.94	670.83	68.13	21.13	89.26	398,552.47
2	Keningau	500	Jalan Kota Kinabalu - Keningau - Tenom	20.13	17.53	37.66	2.54	2.11	4.65	278,055.67
3	Tenom	500	Jalan Kota Kinabalu - Keningau - Tenom	25.81	0.00	25.81	3.45	0.00	3.45	179,227.77
TOTAL				571.84	162.47	734.31	74.13	23.24	97.37	855,835.91

LINTASAN RESOURCES SDN BHD (566483-H)
 PRIVATISATION OF WEST COAST SABAH FEDERAL ROADS MAINTENANCE

ANALYSIS OF POTHOLE PATCHING WORK

Ending Period : 30 AUGUST 2004

MONTH DISTRICT	Accum. up to JUNE 2004			JULY 2004			AUGUST 2004			SEPTEMBER 2004			Current Accum.		
	NOS	AREA	TON	NOS	AREA	TON	NOS	AREA	TON	NOS	AREA	TON	NOS	AREA	TON
TAMBUNAN	264	452.612	59.32	37	73.27	8.77	60	144.94	21.13	0	0.00	0.00	361	670.82	89.22
KENINGAU	28	19.193	2.43	2	0.94	0.11	5	17.53	2.11	0	0.00	0.00	35	37.66	4.65
TENOM	37	25.062	3.36	1	0.74	0.09	0	0.00	0.00	0	0.00	0.00	38	25.80	3.45
TOTAL	329	496.868	65.11	40	74.95	8.97	65	162.47	23.24	0	0.00	0.00	434	734.29	97.32

LINTASAN RESOURCES SDN BHD (566483-H)
 PRIVATISATION OF WEST COAST SABAH FEDERAL ROADS MAINTENANCE

SUMMARY FOR R01 - POTHoles PATCHING RECORD

Ending Period : 31 August 2004

ITEM	DISTRICT	ROUTE NO.	ROADNAME	AREA (m ²)			PREMIX QUANTITY (TON)		
				PREVIOUS MONTH	CURRENT MONTH	CUM. MONTH	PREVIOUS MONTH	CURRENT MONTH	CUM. MONTH
1	Ranau	22	Jalan Kota Kinabalu - Sandakan	1,988.29	140.19	2,128.48	396.58	39.32	435.90
TOTAL				1,988.29	140.19	2,128.48	396.58	39.32	435.90

LINTASAN RESOURCES SDN BHD (566483-H)
 PRIVATISATION OF WEST COAST SABAH FEDERAL ROADS MAINTENANCE

SUMMARY FOR R01 - POTHOLE PATCHING RECORD

Ending Period : 31st August 2004

ITEM	DISTRICT	ROUTE NO.	ROADNAME	AREA (m ²)			PREMIX QUANTITY (TON)		
				PREVIOUS MONTH	CURRENT MONTH	CUM. MONTH	PREVIOUS MONTH	CURRENT MONTH	CUM. MONTH
1	Beaufort	01	Jalan Kota Kinabalu - Sindumin	337.69	2.26	339.95	41.71	0.27	41.98
2	Beaufort	502	Jalan Beaufort-Menumbok	323.79	0.00	323.79	39.27	0.00	39.27
3	Sipitang	01	Jalan Kota Kinabalu - Sindumin	243.84	10.36	254.20	29.49	1.23	30.72
4	Kuala Penyu	502	Jalan Beaufort-Menumbok	133.79	0.00	133.79	16.06	0.00	16.06
TOTAL				1,039.11	12.62	1,051.73	126.53	1.50	128.03

DISTRICT : KOTA MARUDU
ROUTE NO : 01-JALAN KOTA KINABALU-KUDAT
LOCATION : CH123.730

R01 PAVEMENT



Film Batch No: P8170001

BEFORE



Film Batch No: P8170002

IN PROGRESS



Film Batch No: P8170003

AFTER

DISTRICT : KOTA KINABALU
ROUTE NO : 608 JALAN MASUK KE LAPANGAN TEBANG LAMA
LOCATION : KM0.610 (LHS)

R01 PAVEMENT(Sealing Of Cracks)



Film Batch No: P8230016

BEFORE



Film Batch No: P8230017

IN PROGRESS



Film Batch No: P8230021

AFTER

DISTRICT : PENAMPANG
ROUTE NO. : 01 JALAN KOTA KINABALU - SINDUMIN

LOCATION : KM 9.785

R01 PAVEMENT (Sealing of Crack)

Film Batch No: 1223/11



BEFORE

Film Batch No: 1223/13



IN PROGRESS

Film Batch No: 1223/14



AFTER

58

R01 PAVEMENT (Sealing of Crack)

Film Batch No: 1213/10



BEFORE

Film Batch No: 1213/11



IN PROGRESS

Film Batch No: 1213/13



AFTER

LINTASAN RESOURCES SDN. BHD.
PAVEMENT REPAIR (SEALING OF CRACKS)
GRAND SUMMARY

MONTH: AUGUST 2004

R01 - PAVEMENT REPAIR					
DISTRICT	ROUTE NO.	ROAD NAME	Sealing of Cracks		
			Previous Mth	Current Mth	Cummulative
			(m)	(m)	(m)
Kota Belud	01	Jalan Kota Kinabalu-Kudat			0.00
Kota Marudu	01	Jalan Kota Kinabalu-Kudat			0.00
Kudat	01	Jalan Kota Kinabalu-Kudat			0.00
Tuaran	01	Jalan Kota Kinabalu-Kudat			0.00
	22	Jalan Kota Kinabalu-Sandakan			0.00
	503	Jalan Berungis-Kota Belud			0.00
Kota Kinabalu	01	Jalan Kota Kinabalu-Kudat	209.69	213.75	423.44
	01	Jalan Kota Kinabalu-Sindumin			0.00
	606	Jalan Susur Sepangar Bay			0.00
	607	Jalan Masuk Ke Pelabuhan Baru			0.00
	608	Jalan K Masuk Ke Lapangan Terbang Lama	0.00	180.30	180.30
Penampang	01	Jalan Kota Kinabalu-Sindumin	0.00	1,761.30	1,761.30
	500	Jalan Kota Kinabalu-Keningau-Tenom			0.00
	501	Jalan Kota Kinabalu-Penampang-Lok Kawi			0.00
Papar	01	Jalan Kota Kinabalu-Sindumin	0.00	1,004.20	1,004.20
Ranau	22	Jalan Kota Kinabalu-Sandakan			0.00
Tambunam	500	Jalan Kota Kinabalu-Keningau-Tenom			0.00
Keningau	500	Jalan Kota Kinabalu-Keningau-Tenom			0.00
Tenom	500	Jalan Kota Kinabalu-Keningau-Tenom			0.00
Beaufort	01	Jalan Kota Kinabalu-Sindumin			0.00
	502	Jalan Beaufort-Menumbok			0.00
Sipitang	01	Jalan Kota Kinabalu-Sindumin			0.00
Kuala Penyu	502	Jalan Beaufort-Menumbok			0.00
TOTAL			209.69	3,159.55	3,369.24

70

LINTASAN RESOURCES SDN BHD (566483-H)
PRIVATISATION OF WEST COAST SABAH FEDERAL ROADS MAINTENANCE

SUMMARY FOR R01 - SEALING OF CRACK RECORD

Ending Period : 31st August 2004

ITEM	DISTRICT	ROUTE NO.	ROAD NAME	LENGTH (m)		
				PREVIOUS MONTH	CURRENT MONTH	CUM. MONTH
WEST COAST (NORTH)						
1	Kota Kinabalu	01	Jalan Kota Kinabalu - Kudat	209.69	213.75	423.44
2	Tuaran	01	Jalan Kota Kinabalu - Kudat	-	-	-
3	Tuaran	22	Jalan Kota Kinabalu - Sandakan	-	-	-
4	Tuaran	503	Jalan Berungis - Kota Belud	-	-	-
5	Kota Kinabalu	606	Jalan Susur Sepangar Bay	-	-	-
6	Kota Kinabalu	607	Jalan Masuk ke Pelabuhan Baru, K.K.	-	-	-
TOTAL:				209.69	213.75	423.44
WEST COAST (SOUTH)						
1	Kota Kinabalu	01	Jalan Kota Kinabalu - Sindumin	-	-	-
2	Penampang	01	Jalan Kota Kinabalu - Sindumin	-	1,761.30	1,761.30
2	Papar	01	Jalan Kota Kinabalu - Sindumin	-	1,004.20	1,004.20
3	Penampang	500	Jalan Kota Kinabalu - Keningau - Tenom	-	-	-
4	Penampang	501	Jalan Kota Kinabalu - Penampang - Lok Kawi	-	-	-
5	Kota Kinabalu	608	Jalan masuk ke Lapangan Terbang Lama, K.K.	-	180.30	180.30
TOTAL:				-	2,945.80	2,945.80
TOTAL LENGTH OF CRACK SEALED FOR (NORTH + SOUTH) =				209.69	3,159.55	3,369.24

R 02

**PENYENGGARAAN
BAHU JALAN
(SHOULDER)**

R02 SHOULDER REPAIR

Film Batch No: 1225/3



BEFORE

Film Batch No: 1225/6



IN PROGRESS

Film Batch No: 1225/8



AFTER

LINTASAN RESOURCES SDN. BHD.

SHOULDER REPAIR
GRAND SUMMARY

MONTH: AUGUST 2004

R02 - SHOULDER REPAIR								
DISTRICT	ROUTE NO.	ROAD NAME	EARTH SHOULDER			GRAVEL SHOULDER		
			Previous	Current	Cumm.	Previous	Current	Cumm.
			(m2)	(m2)	(m2)	(m2)	(m2)	(m2)
Kota Belud	01	Jalan Kota Kinabalu-Kudat	188.81	0.00	188.81	183.99	0.00	183.99
Kota Marudu	01	Jalan Kota Kinabalu-Kudat						
Kudat	01	Jalan Kota Kinabalu-Kudat				300.00	0.00	300.00
Tuaran	01	Jalan Kota Kinabalu-Kudat	60.00	0.00	60.00	1,520.00	0.00	1,520.00
	22	Jalan Kota Kinabalu-Sandakan						
Kota Kinabalu	01	Jalan Kota Kinabalu-Kudat	1,831.00	0.00	1,831.00	20,829.25	111.93	20,941.18
	01	Jalan Kota Kinabalu-Sindumin				75.75	0.00	75.75
	606	Jalan Susur Sepangar Bay						
	607	Jalan Masuk Ke Pelabuhan Baru						
	608	Jalan Masuk Ke Lapangan Terbang Lama						
Penampang	01	Jalan Kota Kinabalu-Sindumin	8,463.00	0.00	8,463.00	3,540.00	0.00	3,540.00
	500	Jalan Kota Kinabalu-Keningau-Tenom	0.00	3,190.00	3,190.00	11,017.77	200.00	11,217.77
	501	Jalan Kota Kinabalu-Penampang-Lok Kawi				8,120.13	0.00	8,120.13
Papar	01	Jalan Kota Kinabalu-Sindumin				207.27	0.00	207.27
Ranau	22	Jalan Kota Kinabalu-Sandakan	1,252.90	397.50	1,650.40	1,338.73	0.00	1,338.73
Tambunam	500	Jalan Kota Kinabalu-Keningau-Tenom	2,105.19	390.00	2,495.19	2,126.43	0.00	2,126.43
Keningau	500	Jalan Kota Kinabalu-Keningau-Tenom	0.00	0.00	0.00	769.39	0.00	769.39
Tenom	500	Jalan Kota Kinabalu-Keningau-Tenom	0.00	0.00	0.00	88.20	0.00	88.20
Beaufort	01	Jalan Kota Kinabalu-Sindumin	27.00	0.00	27.00	93.24	0.00	93.24
	502	Jalan Beaufort-Menumbok	175.00	0.00	175.00	96.60	0.00	96.60
Sipitang	01	Jalan Kota Kinabalu-Sindumin	0.00	0.00	0.00	40.39	0.00	40.39
Kuala Penyu	502	Jalan Beaufort-Menumbok	0.00	0.00	0.00	119.70	0.00	119.70
TOTAL				3,977.50	18,080.40		311.93	50,778.77

88

LINTASAN RESOURCES SDN BHD (566483-H)
 PRIVATISATION OF WEST COAST SABAH FEDERAL ROADS MAINTENANCE

SUMMARY FOR R02 - SHOULDER REPAIR SUMMARY

Ending Period : 31th August 2004

ITEM	DISTRICT	ROUTE NO.	ROADNAME	EARTH SHOULDER AREA (m ²)			GRAVEL SHOULDER AREA (m ²)			GRASS INVENTORY		ROAD SHOULDER DEFECT (m ²)	
				PREVIOUS MONTH	CURRENT MONTH	CUM. MONTH	PREVIOUS MONTH	CURRENT MONTH	CUM. MONTH	EARTH SHOULDER ESTIMATE QTY (m ²)	GRAVEL SHOULDER ESTIMATE QTY (m ²)		
<u>WEST COAST (NORTH)</u>													
1	KOTA BELUD	01	Jalan Kota Kinabalu - Kudat	188.81	-	188.81	183.99		183.99		325,804.50	1,225.40	23,342.70
2	KOTA MARUDU	01	Jalan Kota Kinabalu - Kudat								184,545.00	14,474.50	18,724.48
3	KUDAT	01	Jalan Kota Kinabalu - Kudat				300.00	-	300.00		313,817.50	5,445.60	911.00
TOTAL				188.81	-	188.81	483.99	-	483.99	824,167.00	21,145.50	42,978.18	

LINTASAN RESOURCES SDN BHD (566483-H)
PRIVATISATION OF WEST COAST SABAH FEDERAL ROADS MAINTENANCE

SUMMARY FOR R02 - SHOULDER REPAIR SUMMARY

Ending Period : 31st August 2004

ITEM	DISTRICT	ROUTE NO.	ROADNAME	EARTH SHOULDER AREA (m ²)			GRAVEL SHOULDER AREA (m ²)		
				PREVIOUS MONTH	CURRENT MONTH	CUM. MONTH	PREVIOUS MONTH	CURRENT MONTH	CUM. MONTH
<u>WEST COAST (NORTH)</u>									
1	Kota Kinabalu	01	Jalan Kota Kinabalu - Kudat	1,831.00	-	1,831.00	20,829.25	111.93	20,941.18
2	Tuaran	01	Jalan Kota Kinabalu - Kudat	60.00	-	60.00	1,520.00	-	1,520.00
TOTAL				1,891.00	-	1,891.00	22,349.25	111.93	22,461.18
<u>WEST COAST (SOUTH)</u>									
1	Kota Kinabalu	01	Jalan Kota Kinabalu - Sindumin	-	-	-	75.75	-	75.75
2	Penampang	01	Jalan Kota Kinabalu - Sindumin	8,463.00	-	8,463.00	3,540.00	-	3,540.00
3	Papar	01	Jalan Kota Kinabalu - Sindumin	-	-	-	207.27	-	207.27
4	Penampang	501	Jalan KK - Penampang - Lok Kawi	-	-	-	8,120.13	-	8,120.13
5	Penampang	500	Jalan KK - Keningau - Tenom	-	3,190.00	3,190.00	11,017.77	200.00	11,217.77
TOTAL				8,463.00	3,190.00	11,653.00	22,960.92	200.00	23,160.92

LINTASAN RESOURCES SDN BHD (566483-H)
 PRIVATISATION OF WEST COAST SABAH FEDERAL ROADS MAINTENANCE

SUMMARY FOR R02 - SHOULDER REPAIR SUMMARY

Ending Period : 31 AUGUST 2004

ITEM	DISTRICT	ROUTE NO.	ROADNAME	EARTH SHOULDER AREA (m2)			GRAVEL SHOULDER AREA (m2)			INVENTORY		ROAD SHOULDER SHOULDER DEFECTS (M2)
				PREVIOUS MONTH	CURRENT MONTH	CUM. MONTH	PREVIOUS MONTH	CURRENT MONTH	CUM. MONTH	EARTH SHOULDER ESTIMATE QTY (m2)	GRAVEL SHOULDER ESTIMATE QTY (m2)	
1	Tambunan	500	Jalan K.K - Keningau - Tenom	2,105.19	390.00	2,495.19	2,126.43	0.00	2,126.43	187,150.00	143,545.00	41,772.50
2	Keningau	500	Jalan K.K - Keningau - Tenom	0.00	0.00	0.00	769.36	0.00	769.36	67,600.00	114,620.00	18,785.70
3	Tenom	500	Jalan K.K - Keningau - Tenom	0.00	0.00	0.00	88.20	0.00	88.20	50,750.00	117,000.00	8,808.44
TOTAL				2,105.19	390.00	2,495.19	2,984.0	-	2,984.0	305,500.00	375,165.00	

LINTASAN RESOURCES SDN BHD (566483-H)
 PRIVATISATION OF WEST COAST SABAH FEDERAL ROADS MAINTENANCE

SUMMARY FOR R02 - SHOULDER REPAIR RECORD

Ending Period : 31 August 2004

ITEM	DISTRICT	ROUTE NO.	ROADNAME	EARTH SHOULDER - AREA (m ²)		GRAVEL SHOULDER - AREA (m ²)	
				PREVIOUS MONTH	CURRENT MONTH	PREVIOUS MONTH	CURRENT MONTH
1	Ranau	22	Jalan Kota Kinabalu - Sandakan	1,252.90	397.50	1,338.73	-
TOTAL				1,252.90	397.50	1,338.73	-
							1,338.73

114

LINTASAN RESOURCES SDN BHD (566483-H)
 PRIVATISATION OF WEST COAST SABAH FEDERAL ROADS MAINTENANCE

SUMMARY FOR R02 - SHOULDER REPAIR RECORD

Ending Period : 31st AUGUST 2004

ITEM	DISTRICT	ROUTE NO.	ROADNAME	AREA (m ²) - Earth Shoulder		AREA (m ²) - Gravel Shoulder	
				PREVIOUS MONTH	CURRENT MONTH	PREVIOUS MONTH	CURRENT MONTH
1	Beaufort	01	Jalan Kota Kinabalu - Sindumin	27.00	0.00	93.24	0.00
2	Beaufort	502	Jalan Beaufort-Menumbok	175.00	0.00	96.60	0.00
3	Sipitang	01	Jalan Kota Kinabalu - Sindumin	0.00	0.00	40.39	0.00
4	Kuala Penyu	502	Jalan Beaufort-Menumbok	0.00	0.00	119.70	0.00
TOTAL				202.00	-	349.93	-
						349.93	349.93

R 03

**PEMOTONGAN
RUMPUT
(GRASS CUTTING)**

121

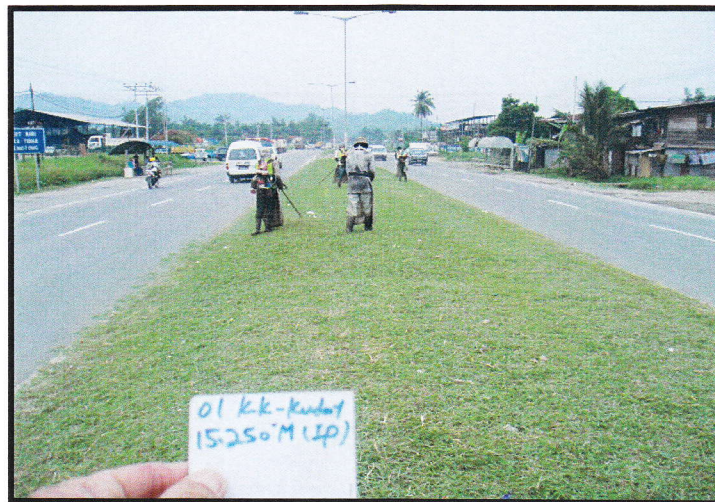
DISTRICT : KOTA KINABALU
ROUTE NO : 01 JALAN KOTA KINABALU-KUDAT
LOCATION : KM15.250 (Median)

R03 GRASS CUTTING



Film Batch No: 004jpg/14-8-04

BEFORE



Film Batch No: 005jpg/14-8-04

IN PROGRESS



Film Batch No: 006jpg/14-8-04

AFTER

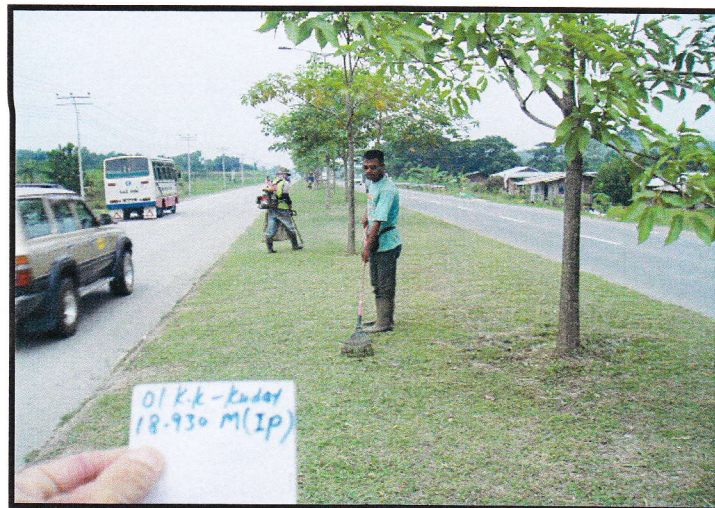
DISTRICT : KOTA KINABALU
ROUTE NO : 01 JALAN KOTA KINABALU-KUDAT
LOCATION : KM18.930 (Median)

R03 GRASS CUTTING



Film Batch No: 009jpg./14-8-04

BEFORE



Film Batch No: 010jpg./14-8-04

IN PROGRESS



Film Batch No: 016jpg./14-8-04

AFTER

DISTRICT : PAPAR
ROUTE NO : 01 JALAN KOTA KINABALU-SINDUMIN
LOCATION : CH25.100 (LHS)

R03 GRASS CUTTING



Film Batch No: 12/8/4-019jpg

BEFORE



Film Batch No: 12/8/4-020jpg

IN PROGRESS



Film Batch No: 12/8/4-020jpg

AFTER

124

R03 GRASS CUTTING

Film Batch No: 2004/001



BEFORE

Film Batch No: 2004/002



IN PROGRESS

Film Batch No: 2004/003



AFTER

125

DISTRICT : TAMBUNAN

ROUTE NO. : 500 JALAN KK-KGU-TENOM

LOCATION : CH56.450 (KM66.350)

R03: GRASS CUTTING

FILM BATCH NO: 4693/1



BEFORE

FILM BATCH NO: 4693/2



IN PROGRESS

FILM BATCH NO: 4693/3



AFTER

R 04

**PENYENGGARAAN
PERABOT JALAN
(ROAD FURNITURE)**

122

DISTRICT : KOTA BELUD
ROUTE NO : 01 - JALAN KOTA KINABALU-KUDAT
LOCATION : CH 59.350 - CH 59.580

R04 ROAD FURNITURE



Film Batch No: P1010092

BEFORE



Film Batch No: P1010093

IN PROGRESS



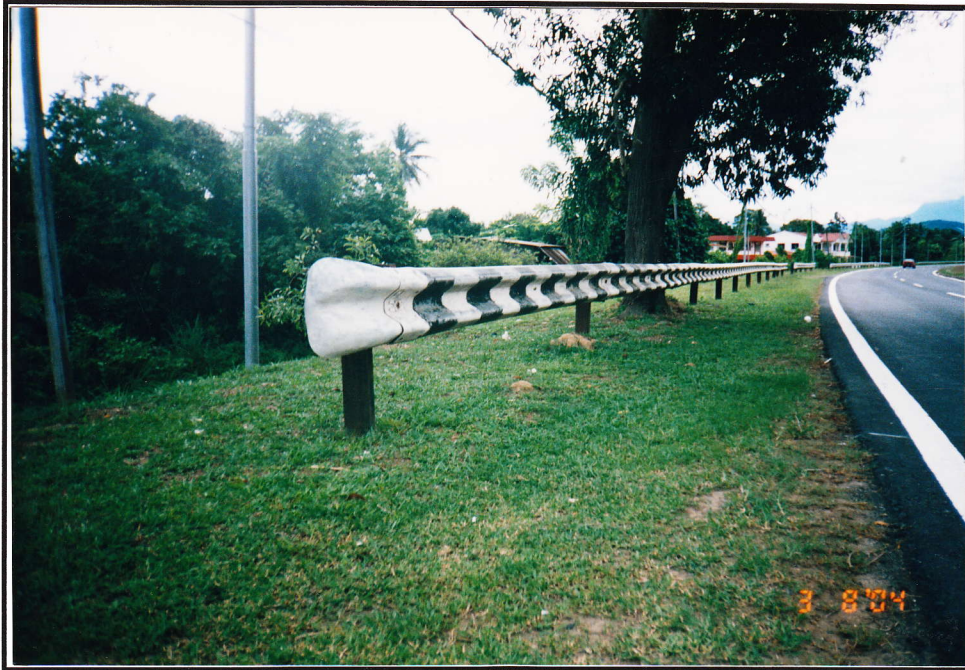
Film Batch No: P1010108

AFTER

128

R04 ROAD FURNITURES

Film Batch No: 1203/06



BEFORE

Film Batch No: 1203/7



IN PROGRESS

Film Batch No: 1203/8



AFTER

124

R04: ROAD FURNITURE

FILM BATCH NO: 0226/1



BEFORE

FILM BATCH NO: 0226/2



IN PROGRESS

FILM BATCH NO: 0226/3



AFTER

DISTRICT : RANAU

ROUTE NO. : 22 JALAN KOTA KINABALU-SANDAKAN

LOCATION : CH 53.000 (KM 89.600) - RHS

R04 ROAD FURNITURES - PAINTING

FILM BATCH NO: 2319/8



BEFORE

FILM BATCH NO: 2319/9



IN PROGRESS

FILM BATCH NO: 2319/10



AFTER

131

R04 ROAD FURNITURES

FILM BATCH NO: 2672/1



BEFORE

FILM BATCH NO: 2672/2



IN PROGRESS

FILM BATCH NO: 2672/3



AFTER

132

R04 ROAD FURNITURES

FILM BATCH NO: 2457/5



BEFORE

FILM BATCH NO: 2457/9



IN PROGRESS

FILM BATCH NO: 2457/11



AFTER

R04 ROAD FURNITURES

FILM BATCH NO: 2672/21



BEFORE

FILM BATCH NO: 2672/22



AFTER

R04 ROAD FURNITURES

FILM BATCH NO: 0222/9



BEFORE

FILM BATCH NO: 0222/12



IN PROGRESS

FILM BATCH NO: 0222/13



AFTER

135

DISTRICT : SIPITANG
ROUTE NO : 01 JALAN KOTA KINABALU - SINDUMIN
LOCATION : CH133.550 (KM135.310) - LHS

R04 ROAD FURNITURE



BEFORE



IN PROGRESS



AFTER

R04 ROAD FURNITURES

FILM BATCH NO: 0222/10



BEFORE

FILM BATCH NO: 0222/11



IN PROGRESS

FILM BATCH NO: 0222/14



AFTER

137

R 05

**PENYENGGARAAN
JAMBATAN & PEMBENTUNG
(BRIDGES & CULVERTS)**

R05 CULVERTS

Film Batch No: 1192/2



BEFORE

Film Batch No: 1192/3



IN PROGRESS

Film Batch No: 1192/4



AFTER

13/8

R05: BRIDGES & CULVERTS

FILM BATCH NO: 4932/10



BEFORE

FILM BATCH NO: 4932/11



IN PROGRESS

FILM BATCH NO: 4932/12



AFTER

1880

DISTRICT : TAMBUNAN

ROUTE NO. : 500 JALAN KK-KGU-TENOM

LOCATION : CH85.200 (KM95.100)

R05: BRIDGES & CULVERTS

FILM BATCH NO: 3787/8



BEFORE

FILM BATCH NO: 3787/9



IN PROGRESS

FILM BATCH NO: 4428/10



AFTER

R05: BRIDGES & CULVERTS

FILM BATCH NO: 4932/3



BEFORE

FILM BATCH NO: 4932/4



IN PROGRESS

FILM BATCH NO: 4932/5



AFTER

142

R05: BRIDGES & CULVERTS

FILM BATCH NO: 0226/9



BEFORE

FILM BATCH NO: 0226/10



IN PROGRESS

FILM BATCH NO: 0226/12



AFTER

R05 BRIDGES & CULVERT

FILM BATCH NO: 2574/6



BEFORE

FILM BATCH NO: 2574/7



IN PROGRESS

FILM BATCH NO: 2574/9



AFTER

1/11/19

R05 CULVERTS

FILM BATCH NO: 0210/10



BEFORE

FILM BATCH NO: 0210/11



IN PROGRESS

FILM BATCH NO: 0210/20



AFTER

14/8

DISTRICT : SIPITANG
ROUTE NO : 01 JALAN KOTA KINABALU - SINDUMIN
LOCATION : CH149.990 (KM151.750) - RHS

R05 BRIDGE



BEFORE



IN PROGRESS



AFTER

1405

R 07

**PENYENGGARAAN
LONGKANG
(DRAINAGE)**

148

DISTRICT : KOTA MARUDU
ROUTE NO : 01-JALAN KOTA KINABALU-KUDAT
LOCATION : CH 111.970

R07 DRAINAGE



Film Batch No: P8240007

BEFORE



Film Batch No: P8240008

IN PROGRESS



Film Batch No: P82400010

AFTER

10/11

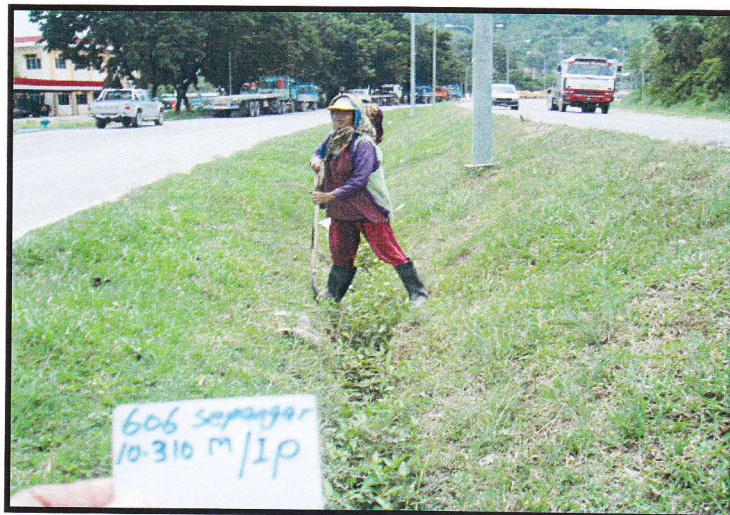
DISTRICT : KOTA KINABALU
ROUTE NO : 606 JALAN SUSUR SEPANGAR BAY
LOCATION : CH 10.310 (Median)

R07 DRAINAGE



Film Batch No: 010.jpg.(12-08-04)

BEFORE



Film Batch No: 011.jpg.(12-08-04)

IN PROGRESS



Film Batch No: 020.jpg.(12-08-04)

AFTER

169

DISTRICT : KOTA KINABALU
ROUTE NO : 606 JALAN SUSUR SEPANGAR BAY
LOCATION : CH 10.560 (LHS)

R07 DRAINAGE



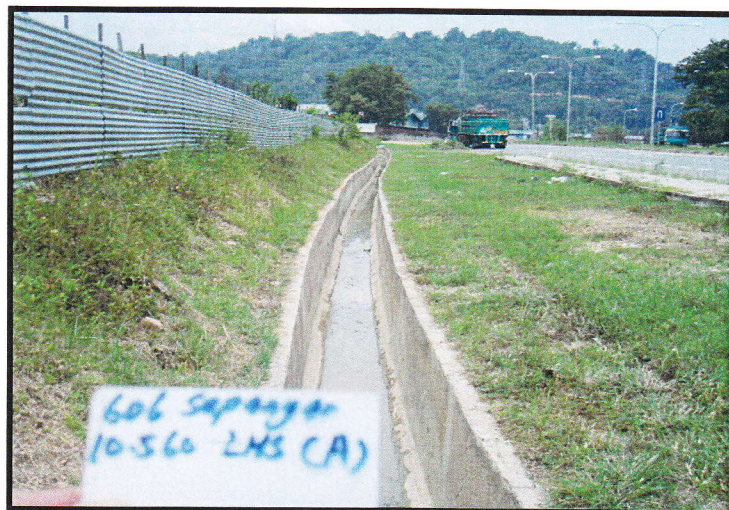
Film Batch No: 018jpg.(12-08-04)

BEFORE



Film Batch No: 019jpg.(12-08-04)

IN PROGRESS



Film Batch No: 024jpg.(12-08-04)

AFTER

(52)

DISTRICT : PAPAR
ROUTE NO : 01 JALAN KOTA KINABALU-SINDUMIN
LOCATION : Ch26.500 (RHS)

R07 DRAINAGE



Film Batch No: 12/8/4-063jpg

BEFORE



Film Batch No: 12/8/4-064jpg

IN PROGRESS



Film Batch No: 12/8/4-065jpg

AFTER

R07: DRAINAGE

FILM BATCH NO: 4359/9



BEFORE

FILM BATCH NO: 4359/10



IN PROGRESS

FILM BATCH NO: 4359/11



AFTER

R07: DRAINAGE

FILM BATCH NO: 4359/7



BEFORE

FILM BATCH NO: 4693/0



IN PROGRESS

FILM BATCH NO: 4693/13



AFTER

DISTRICT : KUALA PENYU
ROUTE NO : 502 JALAN BEAUFORT - MENUK
LOCATION : CH53.770 (KM53.770) - LHS

R07 DRAINAGE



BEFORE



IN PROGRESS



AFTER

154

B

**PEMERIKSAAN
RUTIN
(INSPECTION)**

155

DISTRICT : BEAUFORT
ROUTE NO : 01 JALAN KOTA KINABALU - SINDUMIN
LOCATION : CH80.670 (KM82.430)

(B) ROUTINE INSPECTION



BEFORE



AFTER

156

DISTRICT : BEAUFORT
ROUTE NO : 502 JALAN BEAUFORT - MENUMBUK
LOCATION : CH5.900 (KM5.900)

(B) ROUTINE INSPECTION



BEFORE



AFTER

158