

**PENSWASTAAN PENYENGGARAAN
JALAN-JALAN PERSEKUTUAN DI SABAH
(PANTAI BARAT & PENDALAMAN)**



THE GOVERNMENT OF MALAYSIA

**LAPORAN KEMAJUAN BULANAN
No. 11**

JULAI 2004



Jabatan Kerja Raya, Negeri Sabah

Kontraktor : Lintasan Resources Sdn. Bhd. 566483-H

LINTASAN RESOURCES SDN. BHD.

PENSWASTAAN PENYENGGARAAN JALAN-JALAN
PERSEKUTUAN DI SABAH (PANTAI BARAT & PENDALAMAN)

LAPORAN KEMAJUAN BULANAN JULAI 2004

ISI KANDUNGAN

<u>Bil:</u>	<u>PERKARA</u>
1.	Laporan Eksekutif Projek
2.	Carta Organisasi Syarikat
3.	Lokasi Jalan Persekutuan
4.	Ringkasan Laporan Kemajuan Bulanan
5.	R 01 - Penyenggaraan Permukaan Jalan
6.	R 02 - Penyenggaraan Bahu Jalan
7.	R 03 - Pemetongan Rumput
8.	R 04 - Penyenggaraan Perabot Jalan
9.	R 05 - Penyenggaraan Jambatan dan Pembentung
10.	R 07 - Penyenggaraan Longkang
11.	B - Pemeriksaan Rutin
12.	Kerja-Kerja Kecemasan
13.	Kerja-Kerja Berkala

**LAPORAN
EKSEKUTIF PROJEK**

LAPORAN EKSEKUTIF PROJEK

TAJUK KONTRAK	:	PENSWASTAAN PENYENGGARAAN JALAN-JALAN PERSEKUTUAN DI SABAH (PANTAI BARAT & PENDALAMAN)
KLIEN	:	JABATAN KERJA RAYA, SABAH
SYARIKAT	:	LINTASAN RESOURCES SDN. BHD. Lot 1, Block A, Ground Floor, Wisma TP Mile 1 ½, Tuaran Road 88400 Kota Kinabalu, Sabah, Malaysia.
TEMPOH	:	15 TAHUN
TARIKH MULA	:	01hb September 2003
TARIKH TAMAT	:	31hb August 2018
KAWASAN	:	PANTAI BARAT & PENDALAMAN
JALAN TERLIBAT	:	Semua Jalan-Jalan Persekutuan Yang Diwartakan Dibawah Akta Jalan Persekutuan 1959
PANJANG JALAN	:	764.85 Kilometer
KATEGORI JALAN	:	a) Jalan Protocol b) Jalan Utama c) Jalan Sekunder
SKOP KERJA	:	a) Penyenggaraan Rutin b) Kerja-Kerja Kecemasan

RINGKASAN LAPORAN :

ROUTINE MAINTENANCE

Road maintenance work continues as a matter of routine without any hitches. Damaged shoulders and roadside drains resulting from roadside development such as cable and water pipe-laying by other contractors continue to be a concern to the Concessionaire.

The recycle machines for the reheating of hardened asphalt concrete for pothole patching prove to be of great help on days and hours when fresh asphalt concrete is not in production. With the commission of the machine, we are in a better position to get more potholes patched at a faster pace.

PERIODIC MAINTENANCE

The 2004 Periodic Maintenance works are being carried out in earnest. Whilst non-pavement works such as gabion, guardrail, road marking in the Districts of Kota Belud, Kota Marudu, Penampang, Beaufort are completed, pavement works in Tuaran, Ranau, Penampang, Kota Kinabalu, Sipitang are on-going. Works Orders (Arahan Kerja) for Periodic Works at Tambunan and Keningau are being finalized by JKR for issuance.

Hand in hand with the on-going works, data for the 2005 Proposed Periodic Maintenance Programme are being gathered. The Concessionaire aims to have this submitted to the Government Agencies concerned by September.

EMERGENCY WORK

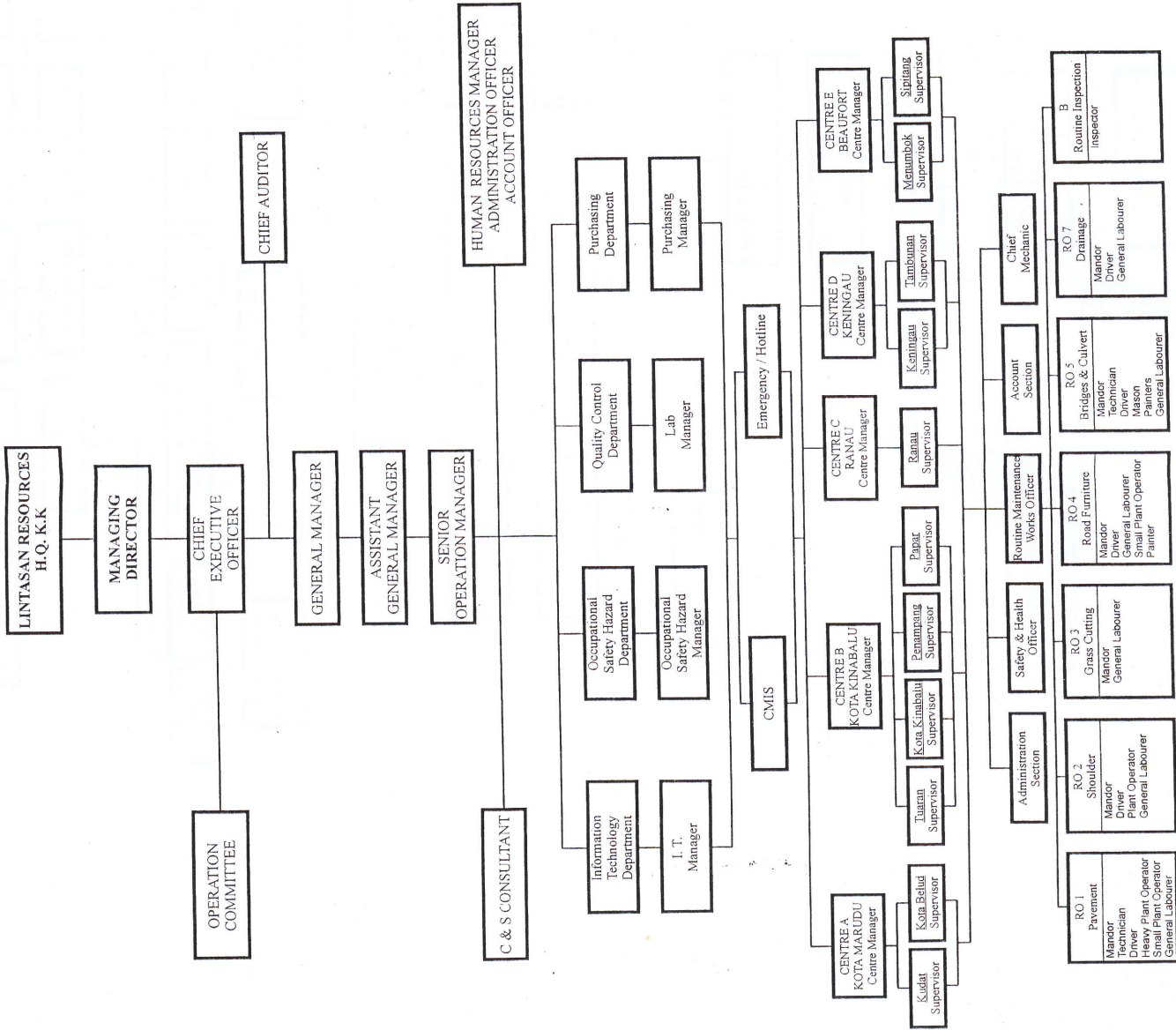
Effective from 7th July 2004, the clearing of rocks and landslide at KM82 along Jalan Kota Kinabalu-Sandakan is no longer the jurisdiction of the Concessionaire. A Contractor has been separately appointed by JKR for the specific task. Emergency work for the Concessionaire the past few weeks have been confined to tree clearing mainly because of improved weather condition.

31/07/2004

**CARTA
ORGANISASI SYARIKAT**

LINTASAN RESOURCES SDN. BHD.

ORGANISATION CHART FOR SABAH FEDERAL ROAD MAINTENANCE



**RINGKASAN
LAPORAN KEMAJUAN
BULANAN**

KERJA-KERJA RUTIN
(ROUTINE MAINTENANCE)

R 01

**PENYENGGARAAN
PERMUKAAN JALAN
(POTHOLE PATCHING)**

DISTRICT : KOTA BELUD

ROUTE NO. : 01 JALAN KOTA KINABALU-KUDAT

LOCATION : KM 104.570

R01 POTHOLE PATCHING

FILM BATCH NO: 3675/31



BEFORE

FILM BATCH NO: 3675/32



IN PROGRESS

FILM BATCH NO: 3675/34



AFTER

DISTRICT : KOTA BELUD

ROUTE NO. : 01 JALAN KOTA KINABALU-KUDAT

LOCATION : KM 83.820

R01 POTHOLE PATCHING

FILM BATCH NO: 3675/27



BEFORE

FILM BATCH NO: 3675/28



IN PROGRESS

FILM BATCH NO: 3675/30



AFTER

R01 PAVEMENT

Film Batch No: 1155/13



BEFORE

Film Batch No: 1155/14



IN PROGRESS

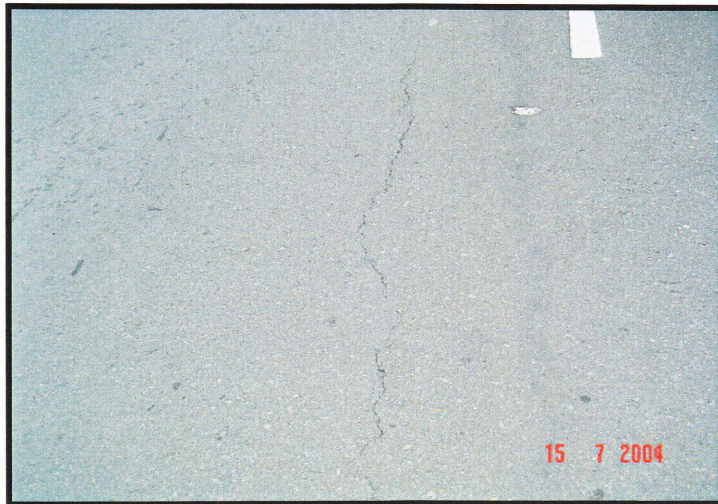
Film Batch No: 1155/15



AFTER

DISTRICT : PENAMPANG
ROUTE NO : 501 JALAN KOTA KINABALU-PENAMPANG-LOK KAWI
LOCATION : KM5.100 (LHS)

RO1 PAVEMENT - Sealing of Surface Cracks



Film Batch No: DSC02031

BEFORE



Film Batch No: DSC02032

IN PROGRESS



Film Batch No: DSC02035

AFTER

DISTRICT : PENAMPANG
ROUTE NO : 501 JALAN KOTA KINABALU-PENAMPANG-LOK KAWI
LOCATION : KM4.900 (LHS)

RO1 PAVEMENT - Sealing of Surface Cracks



Film Batch No: DSC02015

BEFORE



Film Batch No: DSC02016

IN PROGRESS



Film Batch No: DSC02021

AFTER

R01: PAVEMENT

FILM BATCH NO: 3744/0



BEFORE

FILM BATCH NO: 3744/2



IN PROGRESS

FILM BATCH NO: 3744/5



AFTER

R01 POTHOLE PATCHING

FILM BATCH NO: 0157/23



BEFORE

FILM BATCH NO: 0157/00



IN PROGRESS

FILM BATCH NO : 0188/10



AFTER

SEALING OF CRACKS

FILM BATCH NO: 0201/21



BEFORE

FLIM BATCH NO : 0201/22



IN PROGRESS

FLIM BATCH NO : 0201/23



AFTER

R01 POTHOLE PATCHING

FILM BATCH NO: 0109/8



BEFORE

FILM BATCH NO: 0109/9



IN PROGRESS

FILM BATCH NO : 0119/8



AFTER

LINTASAN RESOURCES SDN. BHD.
PAVEMENT REPAIR (POTHOLE PATCHING)
GRAND SUMMARY

MONTH: JULY 2004

R01 - PAVEMENT REPAIR					
DISTRICT	ROUTE NO.	ROAD NAME	PREMIX FOR POTHOLE		
			Previous Month	Current Month	Cummulative
			(Ton)	(Ton)	(Ton)
Kota Belud	01	Jalan Kota Kinabalu-Kudat	146.78	15.76	162.54
Kota Marudu	01	Jalan Kota Kinabalu-Kudat	7.55	0.00	7.55
Kudat	01	Jalan Kota Kinabalu-Kudat	10.12	0.00	10.12
Tuaran	01	Jalan Kota Kinabalu-Kudat	326.68	69.90 734.35	396.58 1,061.03
	22	Jalan Kota Kinabalu-Sandakan	94.44	0.00	94.44
	503	Jalan Berungis-Kota Belud	15.25	1.13	16.38
Kota Kinabalu	01	Jalan Kota Kinabalu-Kudat	443.32	28.36	471.68
	01	Jalan Kota Kinabalu-Sindumin	13.09	0.42	13.51
	606	Jalan Susur Sepangar Bay	44.60	3.86	48.46
	607	Jalan Masuk Ke Pelabuhan Baru	2.42	0.00	2.42
	608	Jalan K Masuk Ke Lapangan Terbang Lama	5.27	0.00	5.27
Penampang	01	Jalan Kota Kinabalu-Sindumin	13.32	0.00	13.32
	500	Jalan Kota Kinabalu-Keningau-Tenom	186.70	2.46	189.16
	501	Jalan Kota Kinabalu-Penampang-Lok Kawi	93.30	0.03	93.33
Papar	01	Jalan Kota Kinabalu-Sindumin	353.10	14.43	367.53
Ranau	22	Jalan Kota Kinabalu-Sandakan	366.29	30.29	396.58
Tambunam	500	Jalan Kota Kinabalu-Keningau-Tenom	59.36	8.77	68.13
Keningau	500	Jalan Kota Kinabalu-Keningau-Tenom	2.44	0.11	2.55
Tenom	500	Jalan Kota Kinabalu-Keningau-Tenom	3.36	0.09	3.45
Beaufort	01	Jalan Kota Kinabalu-Sindumin	40.89	0.82	41.71
	502	Jalan Beaufort-Menumbok	33.72	5.55	39.27
Sipitang	01	Jalan Kota Kinabalu-Sindumin	26.76	2.73	29.49
Kuala Penyu	502	Jalan Beaufort-Menumbok	13.70	2.36	16.06
TOTAL			2,302.46	851.52	3,153.98

187.07

2,489.53

LINTASAN RESOURCES SDN BHD (566483-H)
 PRIVATISATION OF WEST COAST SABAH FEDERAL ROADS MAINTENANCE

SUMMARY FOR R01 - POTHOLES PATCHING RECORD

Ending Period : 31 July 2004

ITEM	DISTRICT	ROUTE NO.	ROADNAME	AREA (m ²)		PREMIX QUANTITY (TON)			INVENTORY CARRIAGEWAY ESTIMATE QTY (m ²)	
				PREVIOUS MONTH	CURRENT MONTH	CUM. MONTH	PREVIOUS MONTH	CURRENT MONTH		CUM. MONTH
1	KOTA BELUD	01	Jalan Kota Kinabalu - Kudat	1,212.62	131.15	1,343.77	146.78	15.76	162.54	313,971.000
2	KOTA MARUDU	01	Jalan Kota Kinabalu - Kudat	62.27	-	62.27	7.55	-	7.55	180,993.00
3	KUDAT	01	Jalan Kota Kinabalu - Kudat	84.25	-	84.25	10.12	-	10.12	308,338.00
TOTAL				1,359.14	131.15	1,490.29	164.45	15.76	180.21	803,302.00

LINTASAN RESOURCES SDN BHD (566483-H)
PRIVATISATION OF WEST COAST SABAH FEDERAL ROADS MAINTENANCE

SUMMARY FOR R01 - POTHoles PATCHING RECORD

Ending Period : 31st July 2004

ITEM	DISTRICT	ROUTE NO.	ROAD NAME	AREA (m ²)			PREMIX QUANTITY (TON)		
				PREVIOUS MONTH	CURRENT MONTH	CUM. MONTH	PREVIOUS MONTH	CURRENT MONTH	CUM. MONTH
WEST COAST (NORTH)									
1	Kota Kinabalu	01	Jalan Kota Kinabalu - Kudat	3,034.06	236.37	3,270.43	443.32	28.36	471.68
2	Tuaran	01	Jalan Kota Kinabalu - Kudat	2,104.56	581.57	2,686.13	326.68	69.90	396.58
3	Tuaran	22	Jalan Kota Kinabalu - Sandakan	692.36	-	692.36	94.44	-	94.44
4	Tuaran	503	Jalan Berungis - Kota Belud	93.27	9.42	102.69	15.25	1.13	16.38
5	Kota Kinabalu	606	Jalan Susur Sepangar Bay	242.19	32.17	274.36	44.60	3.86	48.46
6	Kota Kinabalu	607	Jalan Masuk ke Pelabuhan Baru, K.K.	16.94	-	16.94	2.42	-	2.42
TOTAL:				6,183.38	859.53	7,042.91	926.71	103.25	1,029.96
WEST COAST (SOUTH)									
1	Kota Kinabalu	01	Jalan Kota Kinabalu - Sindumin	84.78	3.48	88.26	13.09	0.42	13.51
2	Penampang	01	Jalan Kota Kinabalu - Sindumin	111.53	-	111.53	13.32	-	13.32
2	Papar	01	Jalan Kota Kinabalu - Sindumin	2,582.47	120.09	2,702.56	353.10	14.43	367.53
3	Penampang	500	Jalan Kota Kinabalu - Keningau - Tenom	1,390.06	20.33	1,410.39	186.70	2.46	189.16
4	Penampang	501	Jalan Kota Kinabalu - Penampang - Lok Kawi	670.92	0.20	671.12	93.30	0.03	93.33
5	Kota Kinabalu	608	Jalan masuk ke Lapangan Terbang Lama, K.K.	40.30	-	40.30	5.27	-	5.27
TOTAL:				4,880.06	144.10	5,024.16	664.78	17.34	682.12
TOTAL FOR (NORTH + SOUTH) =				11,063.44	1,003.63	12,067.07	1,591.49	120.59	1,712.08

LINTASAN RESOURCES SDN BHD (566483-H)
 PRIVATISATION OF WEST COAST SABAH FEDERAL ROADS MAINTENANCE

SUMMARY FOR R01 - POTHLES PATCHING RECORD

Ending Period : 31 July 2004

ITEM	DISTRICT	ROUTE NO.	ROADNAME	AREA (m ²)			PREMIX QUANTITY (TON)		
				PREVIOUS MONTH	CURRENT MONTH	CUM. MONTH	PREVIOUS MONTH	CURRENT MONTH	CUM. MONTH
1	Ranau	22	Jalan Kota Kinabalu - Sandakan	1,828.00	160.29	1,988.29	366.29	30.29	396.58
TOTAL				1,828.00	160.29	1,988.29	366.29	30.29	396.58

LINTASAN RESOURCES SDN BHD (566483-H)
 PRIVATISATION OF WEST COAST SABAH FEDERAL ROADS MAINTENANCE

SUMMARY FOR R01 - POTHOLE PATCHING RECORD

Ending Period : 31st July 2004

ITEM	DISTRICT	ROUTE NO.	ROADNAME	AREA (m ²)			PREMIX QUANTITY (TON)		
				PREVIOUS MONTH	CURRENT MONTH	CUM. MONTH	PREVIOUS MONTH	CURRENT MONTH	CUM. MONTH
1	Beaufort	01	Jalan Kota Kinabalu - Sindumin	330.84	6.85	337.69	40.89	0.82	41.71
2	Beaufort	502	Jalan Beaufort-Menumbok	277.47	46.32	323.79	33.72	5.55	39.27
3	Sipitang	01	Jalan Kota Kinabalu - Sindumin	221.10	22.74	243.84	26.76	2.73	29.49
4	Kuala Penyu	502	Jalan Beaufort-Menumbok	114.12	19.67	133.79	13.70	2.36	16.06
TOTAL				943.53	95.58	1,039.11	115.07	11.46	126.53

R 02

**PENYENGGARAAN
BAHU JALAN
(SHOULDER)**

R02 SHOULDER MAINTENANCE

Film Batch No: 1101/01



BEFORE

Film Batch No: 1101/02



IN PROGRESS

Film Batch No: 1101/03



AFTER

LINTASAN RESOURCES SDN. BHD.

SHOULDER REPAIR
GRAND SUMMARY

MONTH: JULY 2004

R02 - SHOULDER REPAIR						
DISTRICT	ROUTE NO.	ROAD NAME	EARTH SHOULDER		GRAVEL SHOULDER	
			Current Month	Cummulative	Current Month	Cummulative
			(m2)	(m2)	(m2)	(m2)
Kota Belud	01	Jalan Kota Kinabalu-Kudat	0.00	188.81	7.68	183.99
Kota Marudu	01	Jalan Kota Kinabalu-Kudat				
Kudat	01	Jalan Kota Kinabalu-Kudat			0.00	300.00
Tuaran	01	Jalan Kota Kinabalu-Kudat	60.00	60.00	0.00	1,520.00
	22	Jalan Kota Kinabalu-Sandakan				
Kota Kinabalu	01	Jalan Kota Kinabalu-Kudat	1,831.00	1,831.00	260.00	20,829.25
	01	Jalan Kota Kinabalu-Sindumin			0.00	75.75
	606	Jalan Susur Sepangar Bay				
	607	Jalan Masuk Ke Pelabuhan Baru				
Penampang	608	Jalan K Masuk Ke Lapangan Terbang Lama				
	500	Jalan Kota Kinabalu-Keningau-Tenom			5,864.45	11,017.77
	501	Jalan Kota Kinabalu-Penampang-Lok Kawi			0.00	8,120.13
Papar	01	Jalan Kota Kinabalu-Sindumin	8,463.00	8,463.00	3,540.00	3,540.00
	01	Jalan Kota Kinabalu-Sindumin			0.00	207.27
Ranau	22	Jalan Kota Kinabalu-Sandakan	230.00	1,252.90	0.00	1,338.73
Tambunan	500	Jalan Kota Kinabalu-Keningau-Tenom	0.00	12.00	146.16	102.37
Keningau	500	Jalan Kota Kinabalu-Keningau-Tenom			103.51	161.01
Tenom	500	Jalan Kota Kinabalu-Keningau-Tenom			38.78	38.78
Beaufort	01	Jalan Kota Kinabalu-Sindumin	0.00	27.00	3.17	93.24
	502	Jalan Beaufort-Menumbok	0.00	175.00	36.83	96.60
Kuala Penyu	502	Jalan Beaufort-Menumbok			0.00	119.70
Sipitang	01	Jalan Kota Kinabalu-Sindumin			6.54	40.39
TOTAL			10,584.00	12,009.71	9,945.08	47,784.98

LINTASAN RESOURCES SDN BHD (566483-I1)
 PRIVATISATION OF WEST COAST SABAH FEDERAL ROADS MAINTENANCE

SUMMARY FOR R02 - SHOULDER REPAIR SUMMARY

Ending Period : 31th July 2004

ITEM	DISTRICT	ROUTE NO.	ROADNAME	EARTH SHOULDER AREA (m ²)			GRAVEL SHOULDER AREA (m ²)			GRASS INVENTORY		ROAD SHOULDER DEFECT (m ²)
				PREVIOUS MONTH	CURRENT MONTH	CUM. MONTH	PREVIOUS MONTH	CURRENT MONTH	CUM. MONTH	EARTH SHOULDER ESTIMATE QTY (m ²)	GRAVEL SHOULDER ESTIMATE QTY (m ²)	
			<u>WEST COAST (NORTH)</u>									
1	KOTA BELUD	01	Jalan Kota Kinabalu - Kudat	188.81	-	188.81	176.31	7.68	183.99	325,804.50	1,225.40	23,342.70
2	KOTA MARUDU	01	Jalan Kota Kinabalu - Kudat							184,545.00	14,474.50	18,724.48
3	KUDAT	01	Jalan Kota Kinabalu - Kudat				300.00	-	300.00	313,817.50	5,445.60	911.00
TOTAL				188.81	-	188.81	476.31	7.68	483.99	824,167.00	21,145.50	42,978.18

LINTASAN RESOURCES SDN BHD (566483-H)
PRIVATISATION OF WEST COAST SABAH FEDERAL ROADS MAINTENANCE

SUMMARY FOR R02 - SHOULDER REPAIR SUMMARY

Ending Period : 31st July 2004

ITEM	DISTRICT	ROUTE NO.	ROADNAME	EARTH SHOULDER AREA (m ²)		GRAVEL SHOULDER AREA (m ²)	
				PREVIOUS MONTH	CURRENT MONTH	PREVIOUS MONTH	CURRENT MONTH
			<u>WEST COAST (NORTH)</u>				
1	Kota Kinabalu	01	Jalan Kota Kinabalu - Kudat	-	1,831.00	20,569.25	20,829.25
2	Tuaran	01	Jalan Kota Kinabalu - Kudat	-	60.00	1,520.00	1,520.00
			TOTAL		1,891.00	22,089.25	22,349.25
			<u>WEST COAST (SOUTH)</u>				
1	Kota Kinabalu	01	Jalan Kota Kinabalu - Sindumin	-	-	75.75	75.75
2	Penampang	01	Jalan Kota Kinabalu - Sindumin	-	8,463.00	-	3,540.00
3	Papar	01	Jalan Kota Kinabalu - Sindumin	-	-	207.27	207.27
4	Penampang	501	Jalan KK - Penampang -Lok Kawi	-	-	8,120.13	8,120.13
5	Penampang	500	Jalan KK - Keningau -Tenom	-	-	5,153.32	11,017.77
			TOTAL		8,463.00	13,556.47	22,960.92

LINTASAN RESOURCES SDN BHD (566483-H)
 PRIVATISATION OF WEST COAST SABAH FEDERAL ROADS MAINTENANCE

SUMMARY FOR R02 - SHOULDER REPAIR RECORD

Ending Period : 31 July 2004

ITEM	DISTRICT	ROUTE NO.	ROADNAME	EARTH SHOULDER - AREA (m ²)		GRAVEL SHOULDER - AREA (m ²)	
				PREVIOUS MONTH	CURRENT MONTH	PREVIOUS MONTH	CURRENT MONTH
1	Ranau	22	Jalan Kota Kinabalu - Sandakan	1,022.90	230.00	1,338.73	-
TOTAL				1,022.90	230.00	1,338.73	-
							1,338.73

LINTASAN RESOURCES SDN BHD (566483-H)
 PRIVATISATION OF WEST COAST SABAH FEDERAL ROADS MAINTENANCE

SUMMARY FOR R02 - SHOULDER REPAIR SUMMARY

Ending Period : 31 JULY 2004

ITEM	DISTRICT	ROUTE NO.	ROADNAME	EARTH SHOULDER AREA (m2)			GRAVEL SHOULDER AREA (m2)			INVENTORY		ROAD SHOULDER SHOULDER DEFECTS (M2)
				PREVIOUS MONTH	CURRENT MONTH	CUM. MONTH	PREVIOUS MONTH	CURRENT MONTH	CUM. MONTH	EARTH SHOULDER ESTIMATE QTY (m2)	GRAVEL SHOULDER ESTIMATE QTY (m2)	
1	Tambunan	500	Jalan K.K - Keningau - Tenom	2105.19	0.00	2105.19	1980.27	146.16	2126.43	187,150.00	143545	
2	Keningau	500	Jalan K.K - Keningau - Tenom	0.00	0.00	0.00	769.36	0.00	769.36	67,600.00	114,620.00	
3	Tenom	500	Jalan K.K - Keningau - Tenom	0.00	0.00	0.00	60.82	27.38	88.20	50,750.00	117,000.00	
TOTAL				2,105.19	-	2,105.19	2,810.5	173.54	2,984.0	305,500.00	375,165.00	

LINTASAN RESOURCES SDN BHD (566483-H)
 PRIVATISATION OF WEST COAST SABAH FEDERAL ROADS MAINTENANCE

SUMMARY FOR R02 - SHOULDER REPAIR RECORD

Ending Period : 31st July 2004

ITEM	DISTRICT	ROUTE NO.	ROADNAME	AREA (m ²) - Earth Shoulder		AREA (m ²) - Gravel Shoulder	
				PREVIOUS MONTH	CURRENT MONTH	PREVIOUS MONTH	CURRENT MONTH
1	Beaufort	01	Jalan Kota Kinabalu - Sindumin	27.00	0.00	90.07	3.17
2	Beaufort	502	Jalan Beaufort-Menumbok	175.00	0.00	59.77	36.83
3	Sipitang	01	Jalan Kota Kinabalu - Sindumin	0.00	0.00	33.85	6.54
4	Kuala Penyu	502	Jalan Beaufort-Menumbok	0.00	0.00	119.70	0.00
TOTAL				202.00	-	303.39	46.54
							349.93

R 03

**PEMOTONGAN
RUMPUT
(GRASS CUTTING)**

FILM BATCH NO: P1010160



BEFORE

FILM BATCH NO: P1010161



IN PROGRESS

FILM BATCH NO: P1010164



AFTER

DISTRICT : KOTA BELUD

ROUTE NO. : 01 JALAN KOTA KINABALU-KUDAT

LOCATION : KM 98.111R.H.S

RO3 -GRASS CUTTING

FILM BATCH NO: P1010082



BEFORE

FILM BATCH NO: P1010085



IN PROGRESS

FILM BATCH NO: P1010089



AFTER

FILM BATCH NO: P1010083



BEFORE

FILM BATCH NO: P1010087



IN PROGRESS

FILM BATCH NO: P1010090



AFTER

DISTRICT : KOTA KINABALU
ROUTE NO. : 01 JALAN KOTA KINABALU - KUDAT

LOCATION : KM 6.720 (M)

R03 GRASS CUTTING

Film Batch No: 1126/6



BEFORE

Film Batch No: 1126/7



IN PROGRESS

Film Batch No: 1126/8



AFTER

DISTRICT : KOTA KINABALU
ROUTE NO. : 01 JALAN KOTA KINABALU - SINDUMIN

LOCATION : KM 3.340 (LHS)

R03 GRASS CUTTING

Film Batch No: 1126/3



BEFORE

Film Batch No: 1126/4



IN PROGRESS

Film Batch No: 1126/5



AFTER

R03 GRASS CUTTING

Film Batch No: 1121/29



BEFORE

Film Batch No: 1121/30



IN PROGRESS

Film Batch No: 1121/33



AFTER

DISTRICT : TAMBUNAN
ROUTE NO. : 500 JALAN KK-KGU-TENOM

LOCATION : CH48.900 (KM58.800)

R03: GRASS CUTTING

FILM BATCH NO: 3087/4



BEFORE

FILM BATCH NO: 3807/6



AFTER

R03 GRASS CUTTING

FILM BATCH NO : 0119/9



BEFORE

FILM BATCH NO : 0119/10



IN PROGRESS

FILM BATCH NO : 0119/23



AFTER

R 04

**PENYENGGARAAN
PERABOT JALAN
(ROAD FURNITURE)**



BEFORE

FILM BATCH NO: P1010001



IN PROGRESS

FILM BATCH NO: P1010002



AFTER

FILM BATCH NO: P1010003

DISTRICT : KOTA MARUDU
ROUTE NO. : 01 JALAN KOTA KINABALU-KUDAT

LOCATION : KM 140.332R.H.S

R04 -ROAD FURNITURE

FILM BATCH NO: P1010153



BEFORE

FILM BATCH NO: P1010154



IN PROGRESS

FILM BATCH NO: P1010155



AFTER

04 ROAD FURNITURE - Painting Kilometer Post

Film Batch No: 1168/1



BEFORE

Film Batch No: 1168/2



IN PROGRESS

Film Batch No: 1168/3



AFTER

R04 ROAD FURNITURES

Film Batch No: 1155/7



BEFORE

Film Batch No: 1155/8



IN PROGRESS

Film Batch No: 1155/9



AFTER

R04 ROAD FURNITURES

Film Batch No: 1027/5



BEFORE

Film Batch No: 1027/6



IN PROGRESS

Film Batch No: 1027/8



AFTER

R04 ROAD FURNITURES

Film Batch No: 1027/22



BEFORE

Film Batch No: 1027/21



IN PROGRESS

Film Batch No: 1027/23



AFTER

DISTRICT : RANAU

ROUTE NO. : 22 JALAN KOTA KINABALU-SANDAKAN

LOCATION : CH 91.300 (KM 127.900) LHS

R04 ROAD FURNITURES

FILM BATCH NO: 2166/14



BEFORE

FILM BATCH NO: 2166/17



IN PROGRESS

FILM BATCH NO: 2166/24



AFTER

R04 ROAD FURNITURES

FILM BATCH NO: 2166/15



BEFORE

FILM BATCH NO: 2166/22



IN PROGRESS

FILM BATCH NO: 2166/25



AFTER

R04: ROAD FURNITURE

FILM BATCH NO: 3177/1



BEFORE

FILM BATCH NO: 3177/2



IN PROGRESS

FILM BATCH NO: 3177/3



AFTER

R04 ROAD FURNITURES

FILM BATCH NO: 0104/5



BEFORE

FILM BATCH NO: 0104/6



IN PROGRESS

FILM BATCH NO: 0104/7



AFTER

R 05

**PENYENGGARAAN
JAMBATAN & PEMBENTUNG
(BRIDGES & CULVERTS)**

DISTRICT : TUARAN
ROUTE NO : 01 JALAN KOTA KINABALU-KUDAT
LOCATION : CH 24.318

R05 CULVERT



Film Batch No: 095

BEFORE



Film Batch No: 096

IN PROGRESS



Film Batch No: 097

AFTER

R05 CULVERTS

Film Batch No: 1141/11



BEFORE

Film Batch No: 1141/12



IN PROGRESS

Film Batch No: 1141/13



AFTER

R05 BRIDGE HANDRAIL PAINTING

Film Batch No: 1078/23



BEFORE

Film Batch No: 1078/24



IN PROGRESS

Film Batch No: 1107/17



AFTER

FILM BATCH NO: 1852/1



BEFORE

FILM BATCH NO: 1852/3



IN PROGRESS

FILM BATCH NO: 1852/4



AFTER

R05: BRIDGES & CULVERTS

FILM BATCH NO: 3902/6



BEFORE

FILM BATCH NO: 3902/7



IN PROGRESS

FILM BATCH NO: 4086/8



AFTER

R05: BRIDGES & CULVERTS

FILM BATCH NO: 3474/10



BEFORE

FILM BATCH NO: 3474/11



IN PROGRESS

FILM BATCH NO: 3474/12



AFTER

R05 BRIDGES

FILM BATCH NO: 0188/1



BEFORE

FILM BATCH NO: 0188/2



IN PROGRESS

FILM BATCH NO: 0188/8



AFTER

DISTRICT : SIPITANG

ROUTE NO. : 01 JALAN KOTA KINABALU-SINDUMIN

LOCATION : CH149.333(KM151.093)

R05 BRIDGES

FILM BATCH NO:0146/20



BEFORE

FILM BATCH NO:0146/22



IN PROGRESS

FILM BATCH NO:7615/5



AFTER

R 07

**PENYENGGARAAN
LONGKANG
(DRAINAGE)**

DISTRICT
ROUTE NO.

KUDAT
: 01 JALAN KOTA KINABALU-KUDAT

LOCATION : KM 185.632 L.H.S

R07 DRAINAGE

FILM BATCH NO: P1010006



BEFORE

FILM BATCH NO: P1010007



IN PROGRESS

FILM BATCH NO: P1010023



AFTER

R07 DRAINAGE

FILM BATCH NO: P1010006



BEFORE

FILM BATCH NO: P1010007



IN PROGRESS

FILM BATCH NO: P1010023



AFTER

DISTRICT : KOTA KINABALU
ROUTE NO : 01 JALAN KOTA KINABALU-KUDAT
LOCATION : KM1.050 (RHS)

R07 DRAINAGE



Film Batch No: 005

BEFORE



Film Batch No: 006

IN PROGRESS



Film Batch No: 032

AFTER

DISTRICT : KOTA KINABALU
ROUTE NO : 01 JALAN KOTA KINABALU-KUDAT
LOCATION : KM0.670 (MEDIAN)

R07 DRAINAGE



Film Batch No: 009

BEFORE



Film Batch No: 010

IN PROGRESS



Film Batch No: 033

AFTER

R07 DRAINAGE

Film Batch No: 1139/1



BEFORE

Film Batch No: 1139/2



IN PROGRESS

Film Batch No: 1139/13



AFTER

Film Batch No: 1139/11



BEFORE

Film Batch No: 1139/12



IN PROGRESS

Film Batch No: 1139/24



AFTER

R07 DRAINAGE- Berm Drain

Film Batch No: 1139/4



BEFORE

Film Batch No: 1139/5



IN PROGRESS

Film Batch No: 1139/18



AFTER

DISTRICT : KOTA KINABALU
ROUTE NO. : 606 JALAN SUSUR SEPANGAR BAY

LOCATION : KM 7.100 (LHS)

R07 DRAINAGE- Berm Drain

Film Batch No: 1126/9



BEFORE

Film Batch No: 1126/10



IN PROGRESS

Film Batch No: 1139/3



AFTER

DISTRICT : TUARAN
ROUTE NO : 01 JALAN KOTA KINABALU-KUDAT
LOCATION : KM 26.360 (M)

R07 DRAINAGE



Film Batch No: 018

BEFORE



Film Batch No: 020

IN PROGRESS



Film Batch No: 027

AFTER

R07 DRAINAGE

Film Batch No: 1148/0



BEFORE

Film Batch No: 1148/1



IN PROGRESS

Film Batch No: 1148/8



AFTER

R07 DRAINAGE

Film Batch No: 1113/8



BEFORE

Film Batch No: 1113/9



IN PROGRESS

Film Batch No: 1113/12



AFTER

R07 DRAINAGE

Film Batch No: 1121/4



BEFORE

Film Batch No: 1121/5



IN PROGRESS

Film Batch No: 1121/12



AFTER

DISTRICT : PENAMPANG
ROUTE NO : 500 JALAN KOTA KINABALU-KENINGAU-TENOM
LOCATION : KM27.200 (LHS)

R07 DRAINAGE



Film Batch No: 018

BEFORE



Film Batch No: 020

IN PROGRESS



Film Batch No: 027

AFTER

R07 DRAINAGE

FILM BATCH NO: 3299/1



BEFORE

FILM BATCH NO: 3299/3



IN PROGRESS

FILM BATCH NO: 3299/4



AFTER

R07 DRAINAGE

FILM BATCH NO: 3299/6



BEFORE

FILM BATCH NO: 3299/12



AFTER

R07: DRAINAGE

FILM BATCH NO: 3087/13



BEFORE

FILM BATCH NO: 3148/1



IN PROGRESS

FILM BATCH NO: 3148/3



AFTER

R07 DRAINAGE

FILM BATCH NO: 0193/8



BEFORE

FILM BATCH NO: 0193/9



IN PROGRESS

FILM BATCH NO: 0193/14



AFTER

B

**PEMERIKSAAN
RUTIN
(INSPECTION)**

DISTRICT : KOTA BELUD
ROUTE NO. : 01 JALAN KOTA KINABALU-KUDAT

LOCATION : KM 94.970

CARCASSES

FILM BATCH NO: 3675/8



IN PROGRESS

FILM BATCH NO: 3675/9



AFTER

ROUTINE INSPECTION

FILM BATCH NO: 1726/19



BEFORE

FILM BATCH NO: 1726/20



IN PROGRESS

FILM BATCH NO: 2166/28



AFTER

MUD CLEANING

FILM BATCH NO: 3474/2



BEFORE

FILM BATCH NO: 3474/5



IN PROGRESS

FILM BATCH NO: 3474/6



AFTER

DESILTING OF ROAD JUNCTION

FILM BATCH NO: 3530/4



BEFORE

FILM BATCH NO: 3530/5



IN PROGRESS

FILM BATCH NO: 3530/6



AFTER

DISTRICT : KENINGAU
ROUTE NO. : 500 JALAN KK-KGU-TENOM

LOCATION : CH118.300 (KM128.200)

DESILTING OF ROAD JUNCTION

FILM BATCH NO: 3530/7



BEFORE

FILM BATCH NO: 3530/8



IN PROGRESS

FILM BATCH NO: 3530/9



AFTER

DISTRICT : TENOM

ROUTE NO. : 500 JALAN KK-KGU-TENOM

LOCATION : CH158.600 (KM168.500)

REMOVAL OF FALLEN TREES

FILM BATCH NO: 2955/4



BEFORE

FILM BATCH NO: 2955/5



IN PROGRESS

FILM BATCH NO: 2955/6



AFTER

DISTRICT : SIPITANG
ROUTE NO. : 01 JALAN KOTA KINABALU-SINDUMIN LOCATION :CH134.568 (KM136.328)

(B) ROUTINE INSPECTION



FILM BATCH NO: 0195/4

BEFORE



FILM BATCH NO: 0195/5

AFTER

DISTRICT : KUALA PENYU

ROUTE NO. : 502 JALAN BEAUFORT - MENUMBOK

LOCATION : CH34.050 (KM34.050)

(B) ROUTINE INSPECTION

FILM BATCH NO: 0193/15



BEFORE

FILM BATCH NO: 0193/16



AFTER