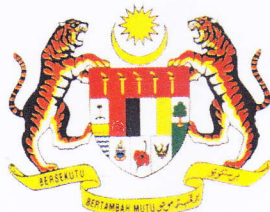


**PENSWASTAAN PENYENGGARAAN
JALAN-JALAN PERSEKUTUAN DI SABAH
(PANTAI BARAT & PENDALAMAN)**



THE GOVERNMENT OF MALAYSIA

**LAPORAN KEMAJUAN BULANAN
No. 9**

MEI 2004



Jabatan Kerja Raya, Negeri Sabah

Kontraktor : Lintasan Resources Sdn. Bhd. 566483-H

LINTASAN RESOURCES SDN. BHD.

PENSWASTAAN PENYENGGARAAN JALAN-JALAN
PERSEKUTUAN DI SABAH (PANTAI BARAT & PENDALAMAN)

LAPORAN KEMAJUAN BULANAN MEI 2004

ISI KANDUNGAN

<u>Bil:</u>	<u>PERKARA</u>
1.	Laporan Eksekutif Projek
2.	Carta Organisasi Syarikat
3.	Lokasi Jalan Persekutuan
4.	Ringkasan Laporan Kemajuan Bulanan
5.	R 01 - Penyenggaraan Permukaan Jalan
6.	R 02 - Penyenggaraan Bahu Jalan
7.	R 03 - Pemotongan Rumput
8.	R 04 - Penyenggaraan Perabot Jalan
9.	R 05 - Penyenggaraan Jambatan dan Pembentung
10.	R 07 - Penyenggaraan Longkang
11.	B - Pemeriksaan Rutin
12.	Kerja-Kerja Kecemasan
13.	Kerja-Kerja Berkala

**LAPORAN
EKSEKUTIF PROJEK**

LAPORAN EKSEKUTIF PROJEK

TAJUK KONTRAK :	PENSWASTAAN PENYENGGARAAN JALAN-JALAN PERSEKUTUAN DI SABAH (PANTAI BARAT & PENDALAMAN)
KLIEN :	JABATAN KERJA RAYA, SABAH
SYARIKAT :	LINTASAN RESOURCES SDN. BHD. Lot 1, Block A, Ground Floor, Wisma TP Mile 1 ½, Tuaran Road 88400 Kota Kinabalu, Sabah, Malaysia.
TEMPOH :	15 TAHUN
TARIKH MULA :	01hb September 2003
TARIKH TAMAT :	31hb August 2018
KAWASAN :	PANTAI BARAT & PENDALAMAN
JALAN TERLIBAT :	Semua Jalan-Jalan Persekutuan Yang Diwartakan Dibawah Akta Jalan Persekutuan 1959
PANJANG JALAN :	764.85 Kilometer
KATEGORI JALAN :	a) Jalan Protocol b) Jalan Utama c) Jalan Sekunder
SKOP KERJA :	a) Penyenggaraan Rutin b) Kerja-Kerja Kecemasan

RINGKASAN LAPORAN :

ROUTINE MAINTENANCE

Weather has been uncertain. Just when we look forward to a dryer spell, torrential rain fell for 3 days in the 2nd week of the month of May causing flood to low lying areas in Kota Kinabalu. Despite the constant effort clearing culverts and roadside drain, the lack of outlets to the natural streams coinciding with high tide prove that clearing of culverts and drains alone are insufficient to prevent localized flood. Jalan Kota Kinabalu-Kudat along the Manggatal-Telipok stretch was particularly affected. The prevailing poor foundation of this stretch of the Jalan Kota Kinabalu-Kudat was most vulnerable to flood. Literally the stretch of road was littered with potholes overnight.

With improved weather and the concerted effort of the Concessionaire, road conditions are now returning to normal.

PERIODIC MAINTENANCE

Since the submission of the Quality Control Test Plans for the 2004 Periodic Maintenance works, no adverse comment on the Test Plans from the respective UPPJ has been received. Arahan Kerja has been issued by JKR for two of the 2004 Periodic Maintenance packages. Actual ground works have since started. Pending the issuance of Arahan Kerja for the other packages from JKR and the outcome of trial mix and laboratory tests, commencement of works for the rest is expected shortly.

EMERGENCY WORK

Generally, with improved weather, the amount of emergency work is on the decrease. The main focus is now on Routine and Periodic Works.

31/05/2004

**CARTA
ORGANISASI SYARIKAT**

**LOKASI
JALAN PERSEKUTUAN
DI
SABAH
(PANTAI BARAT & PENDALAMAN)**

**RINGKASAN
LAPORAN KEMAJUAN
BULANAN**

KERJA-KERJA RUTIN
(ROUTINE MAINTENANCE)

R 01

**PENYENGGARAAN
PERMUKAAN JALAN
(POTHOLE PATCHING)**

DISTRICT
ROUTE NO.

: KOTA MARUDU
: 01 JALAN KOTA KINABALU-KUDAT

LOCATION : KM 115.070

R01 POTHOLE PATCHING

FILM BATCH NO: 0982/23



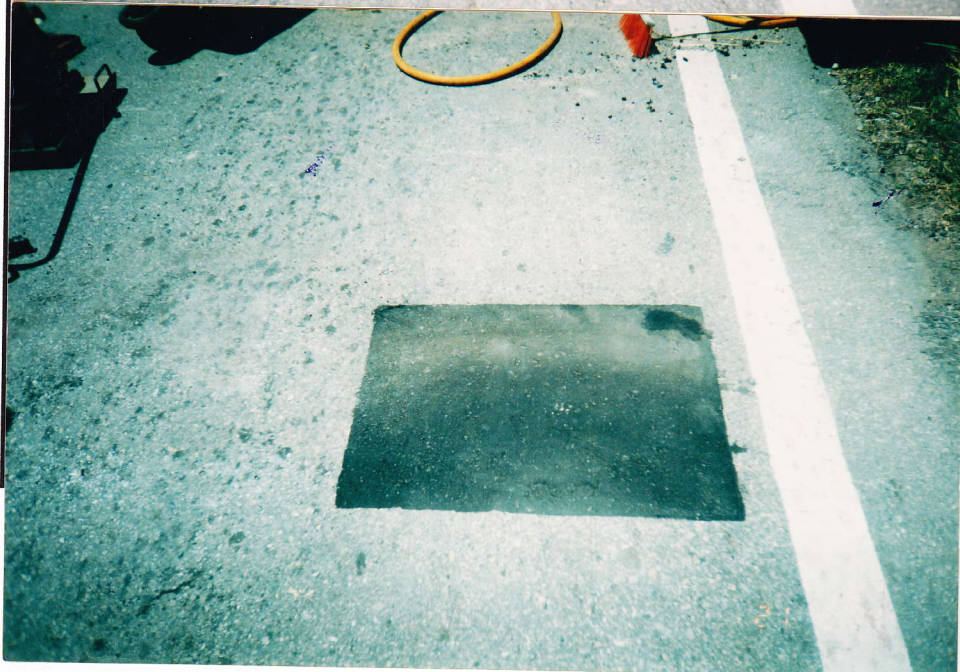
BEFORE

FILM BATCH NO: 0982/24



IN PROGRESS

FILM BATCH NO: 0982/26



AFTER

DISTRICT
ROUTE NO.

: KOTA BELUD
: 01 JALAN KOTA KINABALU-KUDAT

LOCATION

: KM 110.680 LHS

R01 POTHOLE PATCHING

FILM BATCH NO: 0982/25



BEFORE

FILM BATCH NO: 0982/27



IN PROGRESS

FILM BATCH NO: 0982/28



AFTER

R01 PAVEMENT

Film Batch No: 0976/3



BEFORE

Film Batch No: 0976/4



IN PROGRESS

Film Batch No: 0976/6



AFTER

R01: PAVEMENT



BEFORE

FILM BATCH NO: 0069/7



IN PROGRESS

FILM BATCH NO: 0069/8



AFTER

FILM BATCH NO: 0068/6

DISTRICT : BEAUFORT

ROUTE NO. : 502 JALAN BEAUFORT - MENUMBOK

LOCATION : CH12.100 (KM12.100) - RHS

R01 POTHOLE PATCHING



BEFORE



IN PROGRESS

DISTRICT : BEAUFORT
ROUTE NO. : 502 JALAN BEAUFORT - MENUMBOK

LOCATION : CH12.100 (KM12.100) - RHS

R01 POTHOLE PATCHING



FILM BATCH NO:4761/12

IN PROGRESS



FILM BATCH NO:4761/18

AFTER

DISTRICT : SIPITANG
ROUTE NO. : 01 JALAN KOTA KINABALU-SINDUMIN

LOCATION : CH156.580 (KM158.340) - LHS

SEALING OF CRACKS



FILM BATCH NO: 4742/21

BEFORE



FILM BATCH NO: 4742/23

IN PROGRESS

SEALING OF CRACKS

FILM BATCH NO:4742/22



IN PROGRESS

FILM BATCH NO:4742/24



IN PROGRESS

FILM BATCH NO:4742/00



AFTER

LINTASAN RESOURCES SDN. BHD.
PAVEMENT REPAIR (POTHOLE PATCHING)
GRAND SUMMARY

MONTH: MAY 2004

R01 - PAVEMENT REPAIR					
DISTRICT	ROUTE NO.	ROAD NAME	PAVER AREA (m2)	PREMIX FOR POTHOLE	
				Current Month	Cummulative
				(Ton)	(Ton)
Kota Belud	01	Jalan Kota Kinabalu-Kudat		12.80	125.43
Kota Marudu	01	Jalan Kota Kinabalu-Kudat		0.82	7.55
Kudat	01	Jalan Kota Kinabalu-Kudat		0.00	10.12
Tuaran	01	Jalan Kota Kinabalu-Kudat		57.89	277.85
	22	Jalan Kota Kinabalu-Sandakan		0.00	76.72
	503	Jalan Berungis-Kota Belud		0.00	12.48
Kota Kinabalu	01	Jalan Kota Kinabalu-Kudat		38.65	392.51
	01	Jalan Kota Kinabalu-Sindumin		2.75	13.09
	606	Jalan Susur Sepangar Bay		11.10	44.60
	607	Jalan Masuk Ke Pelabuhan Baru		0.00	2.42
	608	Jalan K Masuk Ke Lapangan Terbang Lama		0.45	4.60
Penampang	01	Jalan Kota Kinabalu-Sindumin		3.68	6.90
	500	Jalan Kota Kinabalu-Keningau-Tenom		2.84	168.17
	501	Jalan Kota Kinabalu-Penampang-Lok Kawi		0.90	72.38
Papar	01	Jalan Kota Kinabalu-Sindumin		18.44	309.69
Ranau	22	Jalan Kota Kinabalu-Sandakan		40.06	351.94
Tambunan	500	Jalan Kota Kinabalu-Keningau-Tenom		11.02	54.57
Keningau	500	Jalan Kota Kinabalu-Keningau-Tenom		0.07	1.61
Tenom	500	Jalan Kota Kinabalu-Keningau-Tenom		0.00	3.36
Beaufort	01	Jalan Kota Kinabalu-Sindumin		1.12	31.43
	502	Jalan Beaufort-Menumbok		6.42	33.31
Kuala Penyu	502	Jalan Beaufort-Menumbok		7.06	20.96
Sipitang	01	Jalan Kota Kinabalu-Sindumin		4.06	51.30
TOTAL			0.00	220.13	2,072.99

LINTASAN RESOURCES SDN BHD (566483-H)
 PRIVATISATION OF WEST COAST SABAH FEDERAL ROADS MAINTENANCE

SUMMARY FOR R01 - POTHLES PATCHING RECORD

Ending Period : 31 May 2004

ITEM	DISTRICT	ROUTE NO.	ROADNAME	AREA (m ²)		PREMIX QUANTITY (TON)		
				PREVIOUS MONTHS	CURRENT MONTH	PREVIOUS MONTHS	CURRENT MONTH	
1	KOTA BELUD	01	Jalan Kota Kinabalu - Kudat	927.82	106.87	1,034.69	12.80	125.43
2	KOTA MARUDU	01	Jalan Kota Kinabalu - Kudat	55.90	6.37	62.27	0.82	7.55
3	KUDAT	01	Jalan Kota Kinabalu - Kudat	84.25	-	84.25	-	10.12
TOTAL				1,067.97	113.24	1,181.21	13.62	143.10

LINTASAN RESOURCES SDN BHD (566483-H)
 PRIVATISATION OF WEST COAST SABAH FEDERAL ROADS MAINTENANCE

R01 - POTHOLE PATCHING RECORD

Kota Marudu Centre - Kota Belud District

Route : 01

Road Name : Jalan Kota Kinabalu - Kudat

ITEM	DATE	LOCATION Chainage (km)	POTHOLE SIZE			AREA (m ²)	CUM. AREA (m ²)	PREMIX QUANTITY (ton)	CUM. QUANTITY (ton)	REMARKS
			Length (m)	Width (m)	Depth (m)					
BALANCE END OF APRIL							1067.97		129.48	
1	3/5/2004	77.890	1.19	1.10	0.050	1.310		0.16		
2	3/5/2004	77.900	1.20	1.19	0.050	1.430		0.17		
3	3/5/2004	77.910	1.26	1.17	0.050	1.470		0.18		
4	3/5/2004	78.000	1.30	1.26	0.050	1.640		0.20		
5	3/5/2004	77.580	1.80	1.10	0.050	1.980		0.24		
6	3/5/2004	77.590	1.29	1.09	0.050	1.410		0.17		
7	3/5/2004	82.770	1.10	0.85	0.050	0.940		0.11		
8	3/5/2004	82.780	1.15	0.85	0.050	0.980		0.12		
9	3/5/2004	74.970	2.16	1.16	0.050	2.510		0.30		
10	3/5/2004	74.980	1.61	1.10	0.050	1.770		0.21		
11	3/5/2004	75.010	1.05	0.56	0.050	0.590		0.07		
12	3/5/2004	75.020	0.90	0.54	0.050	0.486		0.06		
13	3/5/2004	83.970	1.20	1.05	0.050	1.260		0.15		
14	3/5/2004	83.971	1.20	1.05	0.050	1.260		0.15		
15	3/5/2004	83.973	1.54	0.95	0.050	1.463		0.18		
16	3/5/2004	83.974	1.45	0.95	0.050	1.378		0.17		
17	3/5/2004	79.770	2.14	1.12	0.050	2.397		0.29		
18	3/5/2004	79.771	1.13	1.12	0.050	1.266		0.15		
19	3/5/2004	79.772	1.56	1.26	0.050	1.966		0.24		
20	3/5/2004	85.770	2.32	1.20	0.050	2.784		0.33		
21	4/5/2004	407.870	1.35	1.00	0.050	1.350		0.16		
22	4/5/2004	107.880	1.50	1.18	0.050	1.770		0.21		
23	4/5/2004	62.770	0.55	0.45	0.050	0.248		0.03		
24	4/5/2004	63.870	1.67	0.72	0.050	1.202		0.14		
25	4/5/2004	63.880	1.49	0.60	0.050	0.894		0.11		
26	4/5/2004	63.890	0.98	0.58	0.050	0.568		0.07		
27	4/5/2004	63.911	1.15	0.54	0.050	0.621		0.07		
28	5/5/2004	83.870	1.11	0.82	0.050	0.910		0.11		
29	5/5/2004	83.871	1.10	0.82	0.050	0.902		0.11		
30	5/5/2004	83.872	1.03	0.82	0.050	0.845		0.10		
31	5/5/2004	83.770	1.44	1.62	0.050	2.333		0.28		
32	5/5/2004	83.771	1.62	1.48	0.050	2.398		0.29		
33	5/5/2004	83.772	1.62	1.44	0.050	2.333		0.28		
34	5/5/2004	83.773	1.62	1.54	0.050	2.495		0.30		
35	5/5/2004	83.774	1.04	0.82	0.050	0.853		0.10		
36	5/5/2004	83.775	1.05	0.82	0.050	0.861		0.10		
37	5/5/2004	83.780	1.32	0.78	0.050	1.030		0.12		
BALANCE CARRIED FORWARD							1119.870		135.710	

LINTASAN RESOURCES SDN BHD (566483-H)
 PRIVATISATION OF WEST COAST SABAH FEDERAL ROADS MAINTENANCE

R01 - POTHOLES PATCHING RECORD

Kota Marudu Centre - Kota Belud District

Route : 01

Road Name : Jalan Kota Kinabalu - Kudat

ITEM	DATE	LOCATION Chainage (km)	POTHOLE SIZE			AREA (m ²)	CUM. AREA (m ²)	PREMIX QUANTITY (ton)	CUM. QUANTITY (ton)	REMARKS
			Length (m)	Width (m)	Depth (m)					
BALANCE BROUGHT FORWARD							1119.870		135.710	
38	5/5/2004	83.781	1.50	0.78	0.050	1.170		0.14		
39	5/5/2004	83.782	1.50	0.78	0.050	1.170		0.14		
40	5/5/2004	83.783	1.92	1.07	0.050	2.054		0.25		
41	5/5/2004	83.784	1.40	1.07	0.050	1.498		0.18		
42	6/5/2004	104.570	1.20	0.84	0.050	1.008		0.12		
43	6/5/2004	104.571	1.12	0.84	0.050	0.941		0.11		
44	6/5/2004	104.572	1.11	0.84	0.050	0.932		0.11		
45	6/5/2004	104.580	0.90	0.83	0.050	0.747		0.09		
46	6/5/2004	104.581	1.55	1.25	0.050	1.938		0.23		
47	6/5/2004	104.582	1.44	1.07	0.050	1.541		0.18		
48	6/5/2004	104.370	2.10	1.16	0.050	2.436		0.29		
49	7/5/2004	69.970	0.85	0.65	0.050	0.553		0.07		
50	7/5/2004	69.971	2.50	0.55	0.050	1.375		0.17		
51	7/5/2004	70.670	1.25	0.56	0.050	0.700		0.08		
52	7/5/2004	70.671	1.65	0.35	0.050	0.578		0.07		
53	7/5/2004	71.370	1.38	0.36	0.050	0.497		0.06		
54	7/5/2004	110.570	1.26	1.16	0.050	1.462		0.18		
55	7/5/2004	110.670	1.26	1.10	0.050	1.386		0.17		
56	7/5/2004	110.671	1.42	0.85	0.050	1.207		0.14		
57	7/5/2004	110.672	1.10	0.86	0.050	0.946		0.11		
58	7/5/2004	110.680	0.64	0.53	0.050	0.339		0.04		
59	10/5/2004	64.170	0.93	0.38	0.050	0.353		0.04		
60	10/5/2004	64.171	0.94	0.38	0.050	0.357		0.04		
61	10/5/2004	64.172	0.43	0.37	0.050	0.159		0.02		
62	10/5/2004	64.180	1.42	0.36	0.050	0.511		0.06		
63	10/5/2004	64.181	0.90	0.57	0.050	0.513		0.06		
64	10/5/2004	64.182	0.64	0.57	0.050	0.365		0.04		
65	10/5/2004	64.183	0.78	0.48	0.050	0.374		0.04		
66	11/5/2004	64.670	1.18	0.87	0.050	1.027		0.12		
67	11/5/2004	64.671	0.89	0.87	0.050	0.774		0.09		
68	11/5/2004	64.672	0.28	0.65	0.050	0.182		0.02		
69	11/5/2004	64.673	1.10	0.65	0.050	0.715		0.09		
70	11/5/2004	64.674	0.96	0.78	0.050	0.749		0.09		
71	13/05/2004	83.970	1.69	0.50	0.050	0.845		0.10		
72	17/05/2004	104.970	1.35	1.24	0.050	1.674		0.20		
73	17/05/2004	104.971	1.05	1.24	0.050	1.302		0.16		
74	17/05/2004	104.972	1.03	1.25	0.050	1.288		0.15		
BALANCE CARRIED FORWARD							1155.540		139.960	

LINTASAN RESOURCES SDN BHD (566483-H)
 PRIVATISATION OF WEST COAST SABAH FEDERAL ROADS MAINTENANCE

R01 - POTHOLE PATCHING RECORD

Kota Marudu Centre - Kota Belud District

Route : 01

Road Name : Jalan Kota Kinabalu - Kudat

ITEM	DATE	LOCATION	POTHOLE SIZE			AREA (m ²)	CUM. AREA (m ²)	PREMIX QUANTITY (ton)	CUM. QUANTITY (ton)	REMARKS
		Chainage (km)	Length (m)	Width (m)	Depth (m)					
BALANCE BROUGHT FORWARD							1155.540		139.960	
75	17/05/2004	105.670	1.22	0.98	0.050	1.196		0.14		
76	17/05/2004	105.671	1.21	0.98	0.050	1.186		0.14		
77	17/05/2004	105.680	1.33	0.56	0.050	0.745		0.09		
78	17/05/2004	105.681	1.43	0.99	0.050	1.416		0.17		
79	17/05/2004	105.685	0.82	0.50	0.050	0.410		0.05		
80	19/05/2004	79.970	1.10	0.87	0.050	0.957		0.11		
81	19/05/2004	79.971	1.14	0.87	0.050	0.992		0.12		
82	19/05/2004	79.972	0.90	0.87	0.050	0.783		0.09		
83	19/05/2004	79.973	0.92	0.68	0.050	0.626		0.08		
84	19/05/2004	79.974	1.12	0.68	0.050	0.762		0.09		
85	19/05/2004	79.980	1.23	1.20	0.050	1.476		0.18		
86	19/05/2004	78.070	1.23	1.20	0.050	1.476		0.18		
87	19/05/2004	78.100	1.23	1.20	0.050	1.476		0.18		
88	19/05/2004	78.110	1.32	1.20	0.050	1.584		0.19		
89	19/05/2004	106.870	1.14	1.30	0.050	1.482		0.18		
90	19/05/2004	106.880	2.10	1.30	0.050	2.730		0.33		
91										
92										
93										
94										
95										
96										
97										
98										
99										
100										
101										
102										
103										
104										
105										
106										
107										
108										
109										
110										
111										
BALANCE CARRIED FORWARD							1174.840		142.280	

LINTASAN RESOURCES SDN BHD (566483-H)
 PRIVATISATION OF WEST COAST SABAH FEDERAL ROADS MAINTENANCE

R01 - POTHOLES PATCHING RECORD

Kota Marudu Centre - Kota Marudu District

Route : 01

Road Name : Jalan Kota Kinabalu - Kudat

ITEM	DATE	LOCATION	POTHOLE SIZE			AREA (m ²)	CUM. AREA (m ²)	PREMIX QUANTITY (ton)	CUM. QUANTITY (ton)	REMARKS
		Chainage (km)	Length (m)	Width (m)	Depth (m)					
BALANCE BROUGHT FORWARD							1174.84		142.28	
1	4/5/2004	115.070	0.67	0.56	0.050	0.000		0.05		
2	4/5/2004	119.670	1.57	0.19	0.050	0.298		0.04		
3	4/5/2004	121.430	1.26	0.98	0.050	1.235		0.15		
4	4/5/2004	125.070	1.48	1.26	0.050	1.865		0.22		
5	4/5/2004	125.270	1.27	1.18	0.050	1.499		0.18		
6	4/5/2004	125.170	1.26	1.17	0.050	1.474		0.18		
7										
8										
9										
10										
11										
12										
13										
14										
15										
16										
17										
18										
19										
20										
21										
22										
23										
24										
25										
26										
27										
28										
29										
30										
31										
32										
33										
34										
35										
36										
37										
BALANCE CARRIED FORWARD							1181.210		143.100	

LINTASAN RESOURCES SDN BHD (566483-H)
 PRIVATISATION OF WEST COAST SABAH FEDERAL ROADS MAINTENANCE

R01 - POTHOLES PATCHING RECORD

Kota Marudu Centre - Kudat District

Route : 01

Road Name : Jalan Kota Kinabalu - Kudat

ITEM	DATE	LOCATION	POTHOLE SIZE			AREA (m ²)	CUM. AREA (m ²)	PREMIX QUANTITY (ton)	CUM. QUANTITY (ton)	REMARKS
		Chainage (km)	Length (m)	Width (m)	Depth (m)					
BALANCE BROUGHT FORWARD							1181.21		143.1	
1										
2										
3										
4										
5										
6										
7										
8										
9										
10										
11										
12										
13										
14										
15										
16										
17										
18										
19										
20										
21										
22										
23										
24										
25										
26										
27										
28										
29										
30										
31										
32										
33										
34										
35										
36										
37										
BALANCE END OF MAY							1181.210		143.100	

LINTASAN RESOURCES SDN BHD (566/483-II)
PRIVATISATION OF WEST COAST SABAH FEDERAL ROADS MAINTENANCE

SUMMARY FOR R01 - POTHLES PATCHING RECORD

Ending Period : 31st May 2004

ITEM	DISTRICT	ROUTE NO.	ROAD NAME	AREA (m ²)			PREMIX QUANTITY (TON)		
				PREVIOUS MONTHS	CURRENT MONTH	CUM.	PREVIOUS MONTHS	CURRENT MONTH	CUM.
1	Kota Kinabalu	01	Jalan Kota Kinabalu - Kudat	2,303.32	✓ 312.10	2,615.42	353.86	✓ 38.65	392.51
2	Kota Kinabalu	01	Jalan Kota Kinabalu - Sindumin	62.41	22.37	84.78	10.34	2.75	13.09
3	Kota Kinabalu	606	Jalan Susur Sepangar Bay	218.64	✓ 23.55	242.19	33.50	✓ 11.10	44.60
4	Kota Kinabalu	607	Jalan masuk ke Pelabuhan Baru, K.K.	16.94	-	16.94	2.42	-	2.42
5	Kota Kinabalu	608	Jalan masuk ke Lapangan Terbang Lama, K.K.	30.97	3.73	34.70	4.15	0.45	4.60
6	Penampang	500	Jalan Kota Kinabalu - Keningau - Tenom	1,213.70	23.77	1,237.47	165.33	2.84	168.17
7	Penampang	501	Jalan Kota Kinabalu - Penampang - Lok Kawi	490.75	7.25	498.00	71.48	0.90	72.38
8	Penampang	01	Jalan Kota Kinabalu - Sindumin	27.02	30.69	57.71	3.22	3.68	6.90
9	Papar	01	Jalan Kota Kinabalu - Sindumin	2,093.29	143.55	2,236.84	291.25	18.44	309.69
10	Tuaran	01	Jalan Kota Kinabalu - Kudat	1,230.74	✓ 478.38	1,709.12	219.96	✓ 57.89	277.85
11	Tuaran	503	Jalan Berungis - Kota Belud	77.45	-	77.45	12.48	-	12.48
12	Tuaran	22	Jalan Kota Kinabalu - Sandakan	550.01	-	550.01	76.72	-	76.72
TOTAL				8,315.24	1,045.39	9,360.63	1,244.71	136.70	1,381.41

LINTASAN RESOURCES SDN BHD (566483-H)
PRIVATISATION OF WEST COAST SABAH FEDERAL ROADS MAINTENANCE

R01 - POTHOLES PATCHING RECORD

Kota Kinabalu Centre - Tuaran District

Route : 01

Road Name : Jalan Kota Kinabalu - Kudat

ITEM	DATE	LOCATION	POT HOLE SIZE			AREA (m ²)	CUM. AREA (m ²)	PREMIX QUANTITY (ton)	CUM. QUANTITY (ton)	REMARKS
		Chainage (km)	Length (m)	Width (m)	Depth (m)					
BALANCE END OF APRIL						1230.74		219.96		
1	05/05/2004	29.140	1.70	1.30	0.050	2.210		0.27		RHS
2	05/05/2004	29.130	1.50	0.80	0.050	1.200		0.14		RHS
3	05/05/2004	28.270	3.20	1.20	0.050	3.840		0.46		RHS
4	05/05/2004	28.270	2.20	1.30	0.050	2.860	10.11	0.34	1.21	RHS
5	11/05/2004	26.970	0.80	0.80	0.050	0.640		0.08		RHS
6	11/05/2004	26.970	1.10	0.90	0.050	0.990	1.63	0.12	0.20	RHS
7	15/05/2004	24.015	1.00	0.70	0.050	0.700		0.08		LHS
8	15/05/2004	24.255	0.80	0.70	0.050	0.560		0.07		LHS
9	15/05/2004	24.264	1.40	1.10	0.050	1.540		0.18		LHS
10	15/05/2004	24.275	0.90	0.70	0.050	0.630	3.43	0.08	0.41	LHS
11	18/05/2004	26.800	1.80	1.00	0.050	1.800		0.22		RHS
12	18/05/2004	26.300	1.20	1.10	0.050	1.320		0.16		RHS
13	18/05/2004	26.150	1.30	1.00	0.050	1.300		0.16		RHS
14	18/05/2004	25.760	2.20	1.00	0.050	2.200		0.26		RHS
15	18/05/2004	26.830	6.20	1.30	0.050	8.060		0.97		RHS
16	18/05/2004	26.829	1.80	0.80	0.050	1.440		0.17		RHS
17	18/05/2004	26.829	2.90	1.00	0.050	2.900		0.35		RHS
18	18/05/2004	26.829	1.50	0.70	0.050	1.050		0.13		RHS
19	18/05/2004	26.827	1.10	0.40	0.050	0.440		0.05		RHS
20	18/05/2004	26.827	1.00	0.90	0.050	0.900		0.11		RHS
21	18/05/2004	26.825	2.30	1.40	0.050	3.220		0.39		RHS
22	18/05/2004	26.824	2.60	1.20	0.050	3.120		0.37		RHS
23	18/05/2004	26.806	1.30	1.20	0.050	1.560		0.19		RHS
24	18/05/2004	26.804	1.10	2.10	0.050	2.310		0.28		RHS
25	18/05/2004	26.804	2.20	1.10	0.050	2.420		0.29		RHS
26	18/05/2004	26.800	1.30	1.60	0.050	2.080		0.25		RHS
27	18/05/2004	26.800	3.10	1.00	0.050	3.100		0.37		RHS
28	18/05/2004	26.760	2.90	1.40	0.050	4.060		0.49		RHS
29	18/05/2004	26.750	1.10	1.30	0.050	1.430		0.17		RHS
30	18/05/2004	26.732	1.50	1.10	0.050	1.650		0.20		RHS
31	18/05/2004	26.732	1.00	0.70	0.050	0.700		0.08		RHS
32	18/05/2004	26.690	3.00	1.40	0.050	4.200		0.50		RHS
33	18/05/2004	26.688	3.00	1.20	0.050	3.600		0.43		RHS
34	18/05/2004	26.684	2.00	1.20	0.050	2.400		0.29		RHS
35	18/05/2004	26.684	5.70	0.70	0.050	3.990		0.48		RHS
36	18/05/2004	26.684	0.60	0.60	0.050	0.360		0.04		RHS
37	18/05/2004	26.680	3.90	1.00	0.050	3.900	65.51	0.47	7.87	RHS
BALANCE CARRIED FORWARD						1311.42		229.65		

LINTASAN RESOURCES SDN BHD (566483-H)
PRIVATISATION OF WEST COAST SABAH FEDERAL ROADS MAINTENANCE

R01 - POTHoles PATCHING RECORD

Kota Kinabalu Centre - Tuaran District

Route : 01

Road Name : Jalan Kota Kinabalu - Kudat

ITEM	DATE	LOCATION	POTHOLE SIZE			AREA (m ²)	CUM. AREA (m ²)	PREMIX QUANTITY (ton)	CUM. QUANTITY (ton)	REMARKS
		Chainage (km)	Length (m)	Width (m)	Depth (m)					
BALANCE BROUGHT FORWARD							1311.42		229.65	
38	19/05/2004	29.770	1.70	1.00	0.050	1.700		0.20		RHS
39	19/05/2004	28.962	3.40	1.20	0.050	4.080		0.49		RHS
40	19/05/2004	28.960	1.10	0.90	0.050	0.990		0.12		RHS
41	19/05/2004	28.300	1.80	0.90	0.050	1.620		0.19		RHS
42	19/05/2004	28.290	1.40	1.10	0.050	1.540		0.18		RHS
43	19/05/2004	28.290	1.60	1.20	0.050	1.920		0.23		RHS
44	19/05/2004	28.289	4.10	1.10	0.050	4.510		0.54		RHS
45	19/05/2004	28.260	1.30	1.00	0.050	1.300		0.16		RHS
46	19/05/2004	27.603	1.80	1.00	0.050	1.800		0.22		RHS
47	19/05/2004	26.496	3.30	1.20	0.050	3.960		0.48		RHS
48	19/05/2004	26.492	2.50	1.40	0.050	3.500		0.42		RHS
49	19/05/2004	26.490	1.80	0.90	0.050	1.620	28.54	0.19	3.42	RHS
50	20/05/2004	26.481	2.60	1.40	0.050	3.640		0.44		RHS
51	20/05/2004	26.481	2.30	1.80	0.050	4.140		0.50		RHS
52	20/05/2004	26.480	0.90	0.90	0.050	0.810		0.10		RHS
53	20/05/2004	26.479	1.10	0.80	0.050	0.880		0.11		RHS
54	20/05/2004	26.475	1.00	0.90	0.050	0.900		0.11		RHS
55	20/05/2004	26.473	5.50	0.80	0.050	4.400		0.53		RHS
56	20/05/2004	26.467	1.20	0.90	0.050	1.080		0.13		RHS
57	20/05/2004	26.465	4.50	1.50	0.050	6.750		0.81		RHS
58	20/05/2004	26.465	0.80	0.90	0.050	0.720		0.09		RHS
59	20/05/2004	26.465	2.00	1.20	0.050	2.400		0.29		RHS
60	20/05/2004	25.890	4.10	1.40	0.050	5.740		0.69		RHS
61	20/05/2004	25.887	4.80	1.20	0.050	5.760		0.69		RHS
62	20/05/2004	25.887	1.20	1.80	0.050	2.160		0.26		RHS
63	20/05/2004	25.885	3.30	1.20	0.050	3.960		0.48		RHS
64	20/05/2004	25.705	4.30	1.20	0.050	5.160		0.62		RHS
65	20/05/2004	25.670	2.70	1.10	0.050	2.970		0.36		RHS
66	20/05/2004	25.670	1.90	0.90	0.050	1.710		0.21		RHS
67	20/05/2004	24.650	3.00	1.20	0.075	3.600		0.65		RHS
68	20/05/2004	24.650	2.50	1.40	0.075	3.500		0.63		RHS
69	20/05/2004	24.700	1.25	1.00	0.050	1.250	61.53	0.15	7.85	LHS
70	21/05/2004	25.740	1.50	0.90	0.050	1.350		0.16		RHS
71	21/05/2004	25.730	4.20	1.10	0.050	4.620		0.55		RHS
72	21/05/2004	25.720	4.60	1.30	0.050	5.980		0.72		RHS
73	21/05/2004	25.720	2.80	1.30	0.050	3.640		0.44		RHS
74	21/05/2004	25.410	2.00	1.00	0.050	2.000		0.24		RHS
BALANCE CARRIED FORWARD							1401.49		240.92	

LINTASAN RESOURCES SDN BHD (566483-H)
PRIVATISATION OF WEST COAST SABAH FEDERAL ROADS MAINTENANCE

R01 - POTHOLES PATCHING RECORD

Kota Kinabalu Centre - Tuaran District

Route : 01

Road Name : Jalan Kota Kinabalu - Kudat

ITEM	DATE	LOCATION	POTHOLE SIZE			AREA (m ²)	CUM. AREA (m ²)	PREMIX QUANTITY (ton)	CUM. QUANTITY (ton)	REMARKS
		Chainage (km)	Length (m)	Width (m)	Depth (m)					
BALANCE BROUGHT FORWARD							1401.49		240.92	
112	21/05/2004	26.660	0.80	0.80	0.050	0.640		0.08		RHS
113	21/05/2004	27.090	2.80	1.30	0.050	3.640	81.82	0.44	9.82	RHS
114	22/05/2004	25.404	1.00	0.80	0.050	0.800		0.10		RHS
115	22/05/2004	25.400	1.10	0.70	0.050	0.770		0.09		RHS
116	22/05/2004	25.399	0.80	0.70	0.050	0.560		0.07		RHS
117	22/05/2004	25.399	1.30	0.90	0.050	1.170		0.14		RHS
118	22/05/2004	25.390	0.90	1.20	0.050	1.080		0.13		RHS
119	22/05/2004	25.389	1.10	0.80	0.050	0.880		0.11		RHS
120	22/05/2004	25.374	3.80	1.20	0.050	4.560		0.55		RHS
121	22/05/2004	25.367	2.10	1.90	0.050	3.990		0.48		RHS
122	22/05/2004	25.337	1.80	0.80	0.050	1.440		0.17		RHS
123	22/05/2004	25.330	7.00	1.30	0.050	9.100		1.09		RHS
124	22/05/2004	25.312	1.50	1.20	0.050	1.800		0.22		RHS
125	22/05/2004	25.310	5.80	0.80	0.050	4.640		0.56		RHS
126	22/05/2004	25.300	8.80	1.10	0.050	9.680		1.16		RHS
127	22/05/2004	25.295	5.00	1.00	0.050	5.000		0.60		RHS
128	22/05/2004	25.292	2.10	1.30	0.050	2.730		0.33		RHS
129	22/05/2004	25.287	6.20	1.00	0.050	6.200		0.74		RHS
130	22/05/2004	25.267	1.60	1.10	0.050	1.760		0.21		RHS
131	22/05/2004	25.264	1.90	0.90	0.050	1.710		0.21		RHS
132	22/05/2004	25.261	1.90	1.00	0.050	1.900		0.23		RHS
133	22/05/2004	25.256	2.60	0.90	0.050	2.340		0.28		RHS
134	22/05/2004	25.253	3.40	0.90	0.050	3.060	65.17	0.37	7.84	RHS
135	23/05/2004	27.790	1.70	1.00	0.050	1.700		0.20		RHS
136	23/05/2004	27.780	1.70	1.00	0.050	1.700		0.20		RHS
137	23/05/2004	27.780	1.40	1.30	0.050	1.820		0.22		RHS
138	23/05/2004	27.779	1.20	1.10	0.050	1.320		0.16		RHS
139	23/05/2004	27.772	1.10	0.80	0.050	0.880		0.11		RHS
140	23/05/2004	27.700	2.10	1.20	0.050	2.520		0.30		RHS
141	23/05/2004	27.370	1.50	0.90	0.050	1.350		0.16		RHS
142	23/05/2004	27.363	1.30	1.00	0.050	1.300		0.16		RHS
143	23/05/2004	27.345	2.70	0.90	0.050	2.430		0.29		RHS
144	23/05/2004	27.345	2.10	1.10	0.050	2.310		0.28		RHS
145	23/05/2004	27.345	2.20	1.00	0.050	2.200		0.26		RHS
146	23/05/2004	27.343	1.30	0.70	0.050	0.910		0.11		RHS
147	23/05/2004	27.343	0.70	1.80	0.050	1.260		0.15		RHS
148	23/05/2004	27.305	3.50	1.00	0.050	3.500		0.42		RHS
BALANCE CARRIED FORWARD							1548.48		258.58	

LINTASAN RESOURCES SDN BHD (566483-H)
PRIVATISATION OF WEST COAST SABAH FEDERAL ROADS MAINTENANCE

R01 - POTHoles PATCHING RECORD

Kota Kinabalu Centre - Tuaran District

Route : 01

Road Name : Jalan Kota Kinabalu - Kudat

ITEM	DATE	LOCATION	POTHOLE SIZE			AREA (m ²)	CUM. AREA (m ²)	PREMIX QUANTITY (ton)	CUM. QUANTITY (ton)	REMARKS
		Chainage (km)	Length (m)	Width (m)	Depth (m)					
BALANCE BROUGHT FORWARD							1548.48		258.58	
149	23/05/2004	27.300	3.90	0.80	0.050	3.120		0.37		RHS
150	23/05/2004	27.298	2.50	0.90	0.050	2.250		0.27		RHS
151	23/05/2004	27.286	6.80	0.60	0.050	4.080		0.49		RHS
152	23/05/2004	27.266	4.70	1.10	0.050	5.170		0.62		RHS
153	23/05/2004	27.230	1.20	0.90	0.050	1.080		0.13		RHS
154	23/05/2004	27.220	1.40	1.20	0.050	1.680		0.20		RHS
155	23/05/2004	27.220	1.70	0.90	0.050	1.530		0.18		RHS
156	23/05/2004	27.200	1.40	1.10	0.050	1.540		0.18		RHS
157	23/05/2004	27.190	3.10	0.80	0.050	2.480		0.30		RHS
158	23/05/2004	27.190	0.90	2.10	0.050	1.890	50.02	0.23	5.99	RHS
159	24/05/2004	26.720	1.20	1.30	0.050	1.560		0.19		RHS
160	24/05/2004	26.716	4.70	1.20	0.050	5.640		0.68		RHS
161	24/05/2004	26.692	2.30	1.20	0.050	2.760		0.33		RHS
162	24/05/2004	26.692	1.80	1.20	0.050	2.160		0.26		RHS
163	24/05/2004	26.690	1.90	0.50	0.050	0.950		0.11		RHS
164	24/05/2004	26.683	2.50	1.00	0.050	2.500		0.30		RHS
165	24/05/2004	26.678	6.60	1.00	0.050	6.600		0.79		RHS
166	24/05/2004	26.678	6.00	1.40	0.050	8.400		1.01		RHS
167	24/05/2004	26.750	8.50	1.30	0.050	11.050		1.33		RHS
168	24/05/2004	26.670	5.30	1.50	0.050	7.950		0.95		RHS
169	24/05/2004	26.670	3.90	1.70	0.050	6.630		0.80		RHS
170	24/05/2004	26.600	1.90	1.10	0.050	2.090		0.25		RHS
171	24/05/2004	26.600	4.30	1.30	0.050	5.590		0.67		RHS
172	24/05/2004	26.600	3.80	1.20	0.050	4.560		0.55		RHS
173	24/05/2004	26.600	6.10	1.50	0.050	9.150		1.10		RHS
174	24/05/2004	27.315	1.40	0.80	0.050	1.120		0.13		RHS
175	24/05/2004	27.316	1.50	1.30	0.050	1.950		0.23		RHS
176	24/05/2004	27.318	4.20	1.20	0.050	5.040		0.60		RHS
177	24/05/2004	27.350	1.10	1.00	0.050	1.100		0.13		RHS
178	24/05/2004	27.360	3.20	0.90	0.050	2.880		0.35		RHS
179	24/05/2004	27.362	1.20	0.90	0.050	1.080		0.13		RHS
180	24/05/2004	27.358	0.90	0.90	0.050	0.810		0.10		LHS
181	24/05/2004	27.359	3.50	1.30	0.050	4.550		0.55		LHS
182	24/05/2004	27.420	1.60	0.90	0.050	1.440		0.17		LHS
183	24/05/2004	27.528	1.40	0.70	0.050	0.980		0.12		LHS
184	24/05/2004	27.529	4.20	1.40	0.050	5.880		0.71		LHS
185	24/05/2004	27.530	1.60	1.40	0.050	2.240		0.27		LHS
BALANCE CARRIED FORWARD							1598.50		264.57	

LINTASAN RESOURCES SDN BHD (566483-H)
PRIVATISATION OF WEST COAST SABAH FEDERAL ROADS MAINTENANCE

R01 - POTHOLE PATCHING RECORD

Kota Kinabalu Centre - Tuaran District

Route : 01

Road Name : Jalan Kota Kinabalu - Kudat

ITEM	DATE	LOCATION	POTHOLE SIZE			AREA (m ²)	CUM. AREA (m ²)	PREMIX QUANTITY (ton)	CUM. QUANTITY (ton)	REMARKS
		Chainage (km)	Length (m)	Width (m)	Depth (m)					
BALANCE BROUGHT FORWARD							1598.50		264.57	
186	24/05/2004	27.600	1.60	1.20	0.050	1.920		0.23		LHS
187	24/05/2004	27.840	1.70	1.20	0.050	2.040	110.62	0.24	13.28	LHS
188										
189										
190										
191										
192										
193										
194										
195										
196										
197										
198										
199										
200										
201										
202										
203										
204										
205										
206										
207										
208										
209										
210										
211										
212										
213										
214										
215										
216										
217										
218										
219										
220										
221										
222										
TOTAL							1709.12		277.85	

LINTASAN RESOURCES SDN BHD (566483-H)
PRIVATISATION OF WEST COAST SABAH FEDERAL ROADS MAINTENANCE

R01 - POTHOLE PATCHING RECORD

Kota Kinabalu Centre - Kota Kinabalu District

Route : 01

Road Name : Jalan Kota Kinabalu - Kudat

ITEM	DATE	LOCATION	POTHOLE SIZE			AREA (m ²)	CUM. AREA (m ²)	PREMIX QUANTITY (ton)	CUM. QUANTITY (ton)	REMARKS
		Chainage (km)	Length (m)	Width (m)	Depth (m)					
BALANCE END OF APRIL							2303.32		353.86	
1	06/05/2004	4.870	2.10	1.10	0.050	2.310		0.28		RHS
2	06/05/2004	7.820	1.80	1.20	0.075	2.160		0.39		LHS
3	06/05/2004	7.860	2.20	1.10	0.075	2.420	6.89	0.44	1.11	LHS
4	07/05/2004	7.860	2.00	0.90	0.050	1.800		0.22		LHS
5	07/05/2004	7.875	2.20	1.40	0.050	3.080		0.37		LHS
6	07/05/2004	16.020	1.90	0.80	0.050	1.520		0.18		LHS
7	07/05/2004	16.030	1.00	0.70	0.050	0.700		0.08		LHS
8	07/05/2004	16.031	1.60	0.60	0.050	0.960		0.12		LHS
9	07/05/2004	17.930	1.80	0.90	0.050	1.620		0.19		LHS
10	07/05/2004	17.935	2.10	1.00	0.050	2.100	11.78	0.25	1.41	LHS
11	08/05/2004	21.130	1.50	1.00	0.050	1.500		0.18		LHS
12	08/05/2004	21.137	2.50	1.50	0.050	3.750		0.45		LHS
13	08/05/2004	21.137	1.60	0.80	0.050	1.280		0.15		LHS
14	08/05/2004	21.150	1.60	0.80	0.050	1.280		0.15		LHS
15	08/05/2004	21.215	1.20	0.90	0.050	1.080		0.13		LHS
16	08/05/2004	21.250	2.70	0.70	0.050	1.890		0.23		LHS
17	08/05/2004	23.660	3.80	1.00	0.050	3.800	14.58	0.46	1.75	LHS
18	09/05/2004	21.262	1.20	0.90	0.050	1.080		0.13		LHS
19	09/05/2004	21.263	2.00	1.00	0.050	2.000		0.24		LHS
20	09/05/2004	21.270	1.60	1.30	0.050	2.080		0.25		LHS
21	09/05/2004	21.295	3.40	1.20	0.050	4.080		0.49		LHS
22	09/05/2004	21.296	1.90	0.90	0.050	1.710	10.95	0.21	1.32	LHS
23	10/05/2004	21.290	1.90	1.00	0.050	1.900		0.23		LHS
24	10/05/2004	21.300	1.60	0.80	0.050	1.280		0.15		LHS
25	10/05/2004	21.310	2.10	0.80	0.050	1.680		0.20		LHS
26	10/05/2004	21.360	1.70	0.70	0.050	1.190		0.14		LHS
27	10/05/2004	21.390	0.80	0.60	0.050	0.480		0.06		LHS
28	10/05/2004	21.392	1.30	0.70	0.050	0.910		0.11		LHS
29	10/05/2004	22.150	0.90	0.80	0.050	0.720		0.09		LHS
30	10/05/2004	22.150	0.80	0.90	0.050	0.720		0.09		LHS
31	10/05/2004	22.151	1.10	0.70	0.050	0.770		0.09		LHS
32	10/05/2004	22.189	2.50	1.00	0.050	2.500		0.30		LHS
33	10/05/2004	22.190	0.80	0.50	0.050	0.400		0.05		LHS
34	10/05/2004	23.194	0.90	0.70	0.050	0.630		0.08		LHS
35	10/05/2004	23.196	1.30	1.00	0.050	1.300		0.16		LHS
36	10/05/2004	23.200	2.30	0.80	0.050	1.840		0.22		LHS
37	10/05/2004	23.220	1.50	1.00	0.050	1.500		0.18		LHS
BALANCE CARRIED FORWARD							2347.52		359.45	

LINTASAN RESOURCES SDN BHD (566483-H)
PRIVATISATION OF WEST COAST SABAH FEDERAL ROADS MAINTENANCE

R01 - POTHOLE PATCHING RECORD

Kota Kinabalu Centre - Kota Kinabalu District

Route : 01

Road Name : Jalan Kota Kinabalu - Kudat

ITEM	DATE	LOCATION	POTHOLE SIZE			AREA (m ²)	CUM. AREA (m ²)	PREMIX QUANTITY (ton)	CUM. QUANTITY (ton)	REMARKS
		Chainage (km)	Length (m)	Width (m)	Depth (m)					
BALANCE BROUGHT FORWARD							2347.52		359.45	
38	10/05/2004	23.280	0.90	0.70	0.050	0.630	18.45	0.08	2.23	LHS
39	11/05/2004	23.280	1.60	1.30	0.050	2.080		0.25		LHS
40	11/05/2004	23.282	2.00	1.00	0.050	2.000		0.24		LHS
41	11/05/2004	23.650	2.90	0.70	0.050	2.030		0.24		LHS
42	11/05/2004	23.650	3.70	0.50	0.050	1.850		0.22		LHS
43	11/05/2004	23.654	3.70	0.90	0.050	3.330		0.40		LHS
44	11/05/2004	23.690	1.20	1.00	0.050	1.200		0.14		LHS
45	11/05/2004	23.693	1.90	0.90	0.050	1.710	14.20	0.21	1.70	LHS
46	15/05/2004	23.707	0.90	0.60	0.050	0.540		0.06		LHS
47	15/05/2004	23.708	0.80	0.70	0.050	0.560		0.07		LHS
48	15/05/2004	23.710	1.20	0.70	0.050	0.840		0.10		LHS
49	15/05/2004	23.712	1.30	1.00	0.050	1.300		0.16		LHS
50	15/05/2004	23.740	2.40	0.90	0.050	2.160		0.26		LHS
51	15/05/2004	23.855	1.20	0.80	0.050	0.960		0.12		LHS
52	15/05/2004	23.865	1.70	1.40	0.050	2.380		0.29		LHS
53	15/05/2004	23.865	0.80	0.80	0.050	0.640		0.08		LHS
54	15/05/2004	23.870	2.20	1.30	0.075	2.860		0.51		LHS
55	15/05/2004	23.880	0.90	0.70	0.050	0.630		0.08		LHS
56	15/05/2004	23.882	0.90	0.70	0.050	0.630		0.08		LHS
57	15/05/2004	23.882	1.10	0.90	0.050	0.990		0.12		LHS
58	15/05/2004	23.960	1.00	0.90	0.050	0.900	15.39	0.11	2.04	LHS
59	16/05/2004	0.450	2.80	1.40	0.050	3.920		0.47		LHS
60	16/05/2004	1.515	1.10	0.80	0.050	0.880		0.11		LHS
61	16/05/2004	1.530	1.80	0.70	0.050	1.260		0.15		LHS
62	16/05/2004	1.560	1.30	0.80	0.050	1.040		0.12		LHS
63	16/05/2004	4.670	1.50	0.90	0.050	1.350		0.16		LHS
64	16/05/2004	17.940	7.60	0.90	0.050	6.840		0.82		LHS
65	16/05/2004	17.950	2.80	1.00	0.050	2.800		0.34		LHS
66	16/05/2004	17.955	1.70	1.10	0.050	1.870		0.22		LHS
67	16/05/2004	17.960	2.70	1.20	0.050	3.240		0.39		LHS
68	16/05/2004	17.968	2.00	0.80	0.050	1.600		0.19		LHS
69	16/05/2004	17.980	2.90	0.80	0.050	2.320		0.28		LHS
70	16/05/2004	19.240	5.10	0.90	0.050	4.590		0.55		LHS
71	16/05/2004	19.346	1.30	0.60	0.050	0.780		0.09		LHS
72	16/05/2004	19.400	3.10	0.80	0.050	2.480		0.30		LHS
73	16/05/2004	19.400	1.90	1.10	0.050	2.090		0.25		LHS
74	16/05/2004	19.960	9.90	0.90	0.050	8.910	45.97	1.07	5.51	LHS
BALANCE CARRIED FORWARD							2441.53		370.93	

LINTASAN RESOURCES SDN BHD (566483-H)

PRIVATISATION OF WEST COAST SABAH FEDERAL ROADS MAINTENANCE

R01 - POTHLES PATCHING RECORD

Kota Kinabalu Centre - Kota Kinabalu District

Route : 01

Road Name : Jalan Kota Kinabalu - Kudat

ITEM	DATE	LOCATION Chainage (km)	POTHOLE SIZE			AREA (m ²)	CUM. AREA (m ²)	PREMIX QUANTITY (ton)	CUM. QUANTITY (ton)	REMARKS
			Length (m)	Width (m)	Depth (m)					
BALANCE BROUGHT FORWARD							2441.53		370.93	
						2.800		0.34		LHS
75	17/05/2004	14.210	2.00	1.40	0.050	1.260		0.15		RHS
76	17/05/2004	21.270	1.40	0.90	0.050	1.870		0.22		RHS
77	17/05/2004	21.665	1.70	1.10	0.050	1.300		0.16		RHS
78	17/05/2004	21.210	1.30	1.00	0.050	0.350		0.04		RHS
79	17/05/2004	21.100	0.70	0.50	0.050	2.750		0.33		RHS
80	17/05/2004	20.995	2.50	1.10	0.050	2.600		0.31		RHS
81	17/05/2004	20.900	2.60	1.00	0.050	0.420		0.05		RHS
82	17/05/2004	20.965	0.70	0.60	0.050	1.980		0.24		RHS
83	17/05/2004	20.958	2.20	0.90	0.050	0.980		0.12		RHS
84	17/05/2004	20.955	1.40	0.70	0.050	3.120		0.37		RHS
85	17/05/2004	20.950	2.40	1.30	0.050	2.400		0.29		RHS
86	17/05/2004	20.860	2.00	1.20	0.050	1.040		0.12		RHS
87	17/05/2004	20.850	1.30	0.80	0.050	0.480		0.06		RHS
88	17/05/2004	20.726	0.80	0.60	0.050	0.360		0.04		RHS
89	17/05/2004	20.725	0.60	0.60	0.050	0.880		0.11		RHS
90	17/05/2004	20.720	1.10	0.80	0.050	0.350		0.04		RHS
91	17/05/2004	20.608	0.70	0.50	0.050	0.660		0.08		RHS
92	17/05/2004	20.603	1.10	0.60	0.050	0.840		0.10		RHS
93	17/05/2004	20.595	1.40	0.60	0.050	1.200		0.14		RHS
94	17/05/2004	20.590	1.50	0.80	0.050	0.300		0.04		LHS
95	17/05/2004	20.910	0.60	0.50	0.050	0.350		0.04		LHS
96	17/05/2004	20.912	0.50	0.70	0.050	0.550		0.07		LHS
97	17/05/2004	20.912	0.50	1.10	0.050	0.490		0.06		LHS
98	17/05/2004	20.913	0.70	0.70	0.050	0.480		0.06		LHS
99	17/05/2004	20.917	0.80	0.60	0.050	0.720		0.09		LHS
100	17/05/2004	20.990	0.90	0.80	0.050	1.280		0.15		LHS
101	17/05/2004	21.140	1.60	0.80	0.050	0.700		0.08		LHS
102	17/05/2004	21.145	1.00	0.70	0.050	1.210		0.15		LHS
103	17/05/2004	21.146	1.10	1.10	0.050	2.250		0.27		LHS
104	17/05/2004	21.146	2.50	0.90	0.050	1.300		0.16		LHS
105	17/05/2004	21.148	1.30	1.00	0.050	3.150		0.38		LHS
106	17/05/2004	21.210	3.50	0.90	0.050	9.840		1.77		LHS
107	17/05/2004	21.213	8.20	1.20	0.075	1.170		0.14		LHS
108	17/05/2004	21.220	1.30	0.90	0.050	0.500		0.06		LHS
109	17/05/2004	21.221	1.00	0.50	0.050	1.120		0.13		LHS
110	17/05/2004	21.221	1.60	0.70	0.050	0.990		0.12		LHS
111	17/05/2004	21.240	1.10	0.90	0.050		2441.53		370.93	
BALANCE CARRIED FORWARD										

LINTASAN RESOURCES SDN BHD (566483-H)
PRIVATISATION OF WEST COAST SABAH FEDERAL ROADS MAINTENANCE

R01 - POTHOLE PATCHING RECORD

Kota Kinabalu Centre - Kota Kinabalu District

Route : 01

Road Name : Jalan Kota Kinabalu - Kudat

ITEM	DATE	LOCATION	POTHOLE SIZE			AREA (m ²)	CUM. AREA (m ²)	PREMIX QUANTITY (ton)	CUM. QUANTITY (ton)	REMARKS
		Chainage (km)	Length (m)	Width (m)	Depth (m)					
BALANCE BROUGHT FORWARD							2441.53		370.93	
112	17/05/2004	21.250	1.20	0.90	0.050	1.080		0.13		LHS
113	17/05/2004	21.280	1.20	0.90	0.050	1.080		0.13		LHS
114	17/05/2004	21.280	0.70	0.50	0.050	0.350		0.04		LHS
115	17/05/2004	21.280	4.60	1.00	0.050	4.600		0.55		LHS
116	17/05/2004	21.287	0.50	0.40	0.050	0.200		0.02		LHS
117	17/05/2004	21.287	0.50	0.70	0.050	0.350		0.04		LHS
118	17/05/2004	21.290	0.80	0.70	0.050	0.560		0.07		LHS
119	17/05/2004	21.300	1.60	1.00	0.050	1.600		0.19		LHS
120	17/05/2004	21.300	0.50	0.50	0.050	0.250		0.03		LHS
121	17/05/2004	21.300	0.80	0.60	0.050	0.480		0.06		LHS
122	17/05/2004	21.302	0.90	0.90	0.050	0.810		0.10		LHS
123	17/05/2004	21.302	0.90	0.50	0.050	0.450		0.05		LHS
124	17/05/2004	21.310	1.50	0.90	0.050	1.350		0.16		LHS
125	17/05/2004	21.312	0.50	4.00	0.050	2.000	69.20	0.24	8.89	LHS
126	18/05/2004	20.505	0.80	0.60	0.050	0.480		0.06		RHS
127	18/05/2004	20.500	1.10	0.90	0.050	0.990		0.12		RHS
128	18/05/2004	20.495	1.80	0.70	0.050	1.260		0.15		RHS
129	18/05/2004	20.443	1.80	1.00	0.050	1.800		0.22		RHS
130	18/05/2004	20.485	2.10	1.00	0.050	2.100		0.25		RHS
131	18/05/2004	20.470	4.90	1.10	0.050	5.390		0.65		RHS
132	18/05/2004	18.115	1.50	0.80	0.050	1.200		0.14		RHS
133	18/05/2004	18.110	2.20	1.00	0.050	2.200		0.26		RHS
134	18/05/2004	18.120	2.50	1.00	0.050	2.500		0.30		RHS
135	18/05/2004	18.120	0.90	0.90	0.050	0.810		0.10		RHS
136	18/05/2004	18.905	1.70	0.90	0.050	1.530		0.18		RHS
137	18/05/2004	18.600	1.30	0.70	0.050	0.910		0.11		RHS
138	18/05/2004	18.580	2.30	1.00	0.050	2.300		0.28		RHS
139	18/05/2004	18.550	1.70	0.80	0.050	1.360		0.16		RHS
140	18/05/2004	18.150	0.90	0.70	0.050	0.630		0.08		RHS
141	18/05/2004	18.080	0.70	0.50	0.050	0.350		0.04		RHS
142	18/05/2004	18.050	1.00	0.70	0.050	0.700		0.08		RHS
143	18/05/2004	17.875	1.50	1.30	0.050	1.950		0.23		RHS
144	18/05/2004	17.870	2.80	1.20	0.050	3.360	31.82	0.40	3.81	RHS
145	20/05/2004	12.310	2.10	1.50	0.050	3.150		0.38		LHS
146	20/05/2004	12.325	2.80	1.10	0.050	3.080		0.37		LHS
147	20/05/2004	12.335	1.50	0.70	0.050	1.050		0.13		LHS
148	20/05/2004	12.365	0.90	0.50	0.050	0.450		0.05		LHS
BALANCE CARRIED FORWARD							2542.55		383.63	

LINTASAN RESOURCES SDN BHD (566483-11)
 PRIVATISATION OF WEST COAST SABAH FEDERAL ROADS MAINTENANCE

SUMMARY FOR R01 - POTHoles PATCHING RECORD

Ending Period : 31 May 2004

ITEM	DISTRICT	ROUTE NO.	ROADNAME	AREA (m ²)			PREMIX QUANTITY (TON)		
				PREVIOUS MONTHS	CURRENT MONTH	CUM.	PREVIOUS MONTHS	CURRENT MONTH	CUM.
1	Ranau	22	Jalan Kota Kinabalu - Sandakan	1,541.13	224.02	1,765.15	311.88	40.06	351.94
TOTAL				1,541.13	224.02	1,765.15	311.88	40.06	351.94

LINTASAN RESOURCES SDN BHD (566/483-11)
PRIVATISATION OF WEST COAST SABAH FEDERAL ROADS MAINTENANCE

SUMMARY FOR R01 - POTHoles PATCHING RECORD

Ending Period : 29 MAY 2004

ITEM	DISTRICT	ROUTE NO.	ROADNAME	AREA (m ²)			PREMIX QUANTITY (TON)		
				PREVIOUS MONTHS	CURRENT MONTH	CUM.	PREVIOUS MONTHS	CURRENT MONTH	CUM.
1	Tambunan	500	Jalan Kota Kinabalu - Keningau - Tenom	331.01	81.61	412.62	43.55	11.02	54.57
2	Keningau	500	Jalan Kota Kinabalu - Keningau - Tenom	11.72	0.60	12.32	1.54	0.07	1.61
3	Tenom	500	Jalan Kota Kinabalu - Keningau - Tenom	23.25	0.00	23.25	3.36	0.00	3.36
TOTAL				365.98	82.21	448.19	48.45	11.09	59.54

LINTASAN RESOURCES SDN BHD (566483-H)
 PRIVATISATION OF WEST COAST SABAH FEDERAL ROADS MAINTENANCE

SUMMARY FOR R01 - POTHLES PATCHING RECORD

Ending Period : 31st May 2004

ITEM	DISTRICT	ROUTE NO.	ROADNAME	AREA (m ²)		PREMIX QUANTITY (TON)		
				PREVIOUS MONTHS	CURRENT MONTH	PREVIOUS MONTHS	CURRENT MONTH	
1	Beaufort	01	Jalan Kota Kinabalu - Sindumin	278.72	9.32	30.31	1.12	31.43
2	Beaufort	502	Jalan Beaufort-Menumbok	223.93	53.54	26.89	6.42	33.31
3	Sipitang	01	Jalan Kota Kinabalu - Sindumin	182.19	33.94	16.90	4.06	20.96
4	Kuala Penyu	502	Jalan Beaufort-Menumbok	55.34	58.78	6.64	7.06	13.70
TOTAL				740.18	155.58	80.74	18.66	99.40

R 02

**PENYENGGARAAN
BAHU JALAN
(SHOULDER)**

DISTRICT : PENAMPANG

ROUTE NO. : 501 JALAN KOTA KINABALU-PENAMPANG-LOK KAWI

LOCATION : (KM 7.400)LHS

R02 SHOULDER MAINTENANCE

Film Batch No. 0953/5



BEFORE

Film Batch No. 0953/6



AFTER

DISTRICT : PENAMPANG

ROUTE NO. : 501 JALAN KOTA KINABALU-PENAMPANG-LOK KAWI

LOCATION : (KM 7.500)LHS

R02 SHOULDER MAINTENANCE

Film Batch No. 0953/7



BEFORE

Film Batch No. 0953/13



AFTER

R02 SHOULDER MAINTENANCE

Film Batch No: 0570/1



BEFORE

Film Batch No: 0949/6



IN PROGRESS

Film Batch No: 0949/8



AFTER

DISTRICT : TAMBUNAN
ROUTE NO. : 500 JALAN KK-KGU-TENOM

LOCATION : CH51.000 (KM60.900)

R02: ROAD SHOULDER



FILM BATCH NO: 0435/1

BEFORE



FILM BATCH NO: 0435/3

IN PROGRESS



FILM BATCH NO: 0435/4

AFTER

LINTASAN RESOURCES SDN. BHD.
SHOULDER REPAIR
GRAND SUMMARY

MONTH: MAY 2004

R02 - SHOULDER REPAIR				
DISTRICT	ROUTE NO.	ROAD NAME	EARTH (m2)	GRAVEL (m2)
Kota Belud	01	Jalan Kota Kinabalu-Kudat		
Kota Marudu	01	Jalan Kota Kinabalu-Kudat		
Kudat	01	Jalan Kota Kinabalu-Kudat		
Tuaran	01	Jalan Kota Kinabalu-Kudat		
	22	Jalan Kota Kinabalu-Sandakan		
Kota Kinabalu	01	Jalan Kota Kinabalu-Kudat		
	01	Jalan Kota Kinabalu-Sindumin		
	606	Jalan Susur Sepangar Bay		
	607	Jalan Masuk Ke Pelabuhan Baru		
	608	Jalan K Masuk Ke Lapangan Terbang Lama		
Penampang	500	Jalan Kota Kinabalu-Keningau-Tenom		3,119.10
	501	Jalan Kota Kinabalu-Penampang-Lok Kawi		7,931.28
	01	Jalan Kota Kinabalu-Sindumin		
Papar	01	Jalan Kota Kinabalu-Sindumin		
Ranau	22	Jalan Kota Kinabalu-Sandakan	239.00	
Tambunam	500	Jalan Kota Kinabalu-Keningau-Tenom	12.00	
Keningau	500	Jalan Kota Kinabalu-Keningau-Tenom		57.50
Tenom	500	Jalan Kota Kinabalu-Keningau-Tenom		
Beaufort	01	Jalan Kota Kinabalu-Sindumin	2.50	30.83
	502	Jalan Beaufort-Menumbok		5.05
Kuala Penyu	502	Jalan Beaufort-Menumbok		
Sipitang	01	Jalan Kota Kinabalu-Sindumin		
TOTAL			253.50	11,143.76

LINTASAN RESOURCES SDN BHD
(566/483-II)
PRIVATISATION OF WEST COAST SABAH FEDERAL ROADS MAINTENANCE

SUMMARY FOR R02 - SHOULDER REPAIR SUMMARY

Ending Period : 31st May 2004

ITEM	DISTRICT	ROUTE NO.	ROADNAME	EARTH SHOULDER AREA (m ²)			GRAVEL SHOULDER AREA (m ²)		
				PREVIOUS MONTH	CURRENT MONTH	CUM. MONTH	PREVIOUS MONTH	CURRENT MONTH	CUM. MONTH
1	Kota Kinabalu	01	Jalan Kota Kinabalu - Kudat				20,569.25	-	20,569.25
2	Kota Kinabalu	01	Jalan Kota Kinabalu - Sindumin				75.75	-	75.75
3	Penampang	501	Jalan KK - Penampang -Lok Kawi				188.85	7,931.28	8,120.13
4	Penampang	500	Jalan KK - Keningau -Tenom				834.22	3,119.10	3,953.32
5	Papar	01	Jalan Kota Kinabalu - Sindumin				207.27	-	207.27
6	Tuaran	01	Jalan Kota Kinabalu - Kudat				1,520.00	-	1,520.00
TOTAL							23,395.34	11,050.38	34,445.72

LINTASAN RESOURCES SDN BHD (566483-H)

PRIVATISATION OF WEST COAST SABAH FEDERAL ROADS MAINTENANCE

SUMMARY FOR R02 - SHOULDER REPAIR RECORD

ITEM	DISTRICT	ROUTE NO.	ROADNAME	EARTH SHOULDER AREA (m ²)	GRAVEL SHOULDER AREA (m ²)
	Ranau	22	Jalan Kota Kinabalu - Sandakan	239.00	-
TOTAL				239.00	-

Checked & Certified Correct By :

Checked & Certified Correct By :

For Lintasan Resources Sdn Bhd

For Jabatan Kerja Raya

LINTASAN RESOURCES SDN BHD (566/483-II)
PRIVATISATION OF WEST COAST SABAH FEDERAL ROADS MAINTENANCE

SUMMARY FOR R02 - SHOULDER REPAIR RECORD

Ending Period : 31st May 2004

ITEM	DISTRICT	ROUTE NO.	ROADNAME	AREA (m ²) - Earth Shoulder			AREA (m ²) - Gravel Shoulder		
				PREVIOUS MONTH	CURRENT MONTH	CUM. MONTH	PREVIOUS MONTH	CURRENT MONTH	CUM. MONTH
1	Beaufort	01	Jalan Kota Kinabalu - Sindumin	27.00	0.00	27.00	90.07	0.00	90.07
2	Beaufort	502	Jalan Beaufort-Menumbok	175.00	0.00	175.00	54.72	5.05	59.77
3	Sipitang	01	Jalan Kota Kinabalu - Sindumin	0.00	0.00	0.00	33.85	0.00	33.85
4	Kuala Penyu	502	Jalan Beaufort-Menumbok	0.00	0.00	0.00	119.70	0.00	119.70
TOTAL				202.00	-	202.00	298.34	5.05	303.39

R 03

**PEMOTONGAN
RUMPUT
(GRASS CUTTING)**

DISTRICT
ROUTE NO.

: KUDAT
: 01 JALAN KOTA KINABALU-KUDAT

LOCATION

: KM 144.632 LHS

R03 GRASS CUTTING

FILM BATCH NO: 0961/3



BEFORE

FILM BATCH NO: 0961/6



IN PROGRESS

FILM BATCH NO: 0982/31



AFTER

DISTRICT : KOTA BELUD

ROUTE NO. : 01 JALAN KOTA KINABALU-KUDAT

LOCATION : KM 88.811 LHS

R03 GRASS CUTTING

FILM BATCH NO: 0961/22



BEFORE

FILM BATCH NO: 0961/23



IN PROGRESS

FILM BATCH NO: 0982/34



AFTER

DISTRICT : TUARAN
ROUTE NO. : 22 JALAN KOTA KINABALU - SANDAKAN

LOCATION : KM20.700

R03 GRASS CUTTING

Film Batch No: 0927/12



BEFORE

Film Batch No: 0927/12A



IN PROGRESS

Film Batch No: 0974/0



AFTER

DISTRICT : KOTA KINABALU
ROUTE NO. : 01 JALAN KOTA KINABALU - KUDAT

LOCATION : KM 10.500

R03 GRASS CUTTING

Film Batch No: 0933/7



BEFORE

Film Batch No: 0933/9



IN PROGRESS

Film Batch No: 0933/10



AFTER

DISTRICT : TAMBUNAN
ROUTE NO. : 500 JALAN KK-KGU-TENOM

LOCATION : CH50.100 (KM60.000)

R03: GRASS CUTTING

FILM BATCH NO: 0434/3



BEFORE

FILM BATCH NO: 0434/4



IN PROGRESS

FILM BATCH NO: 0434/12



AFTER

DISTRICT : TENOM

ROUTE NO. : 500 JALAN KK-KGU-TENOM

LOCATION : CH156.400 (KM166.300)

R03: GRASS CUTTING

FILM BATCH NO: 4663/3



BEFORE

FILM BATCH NO: 4898/3



IN PROGRESS

FILM BATCH NO: 4898/4



AFTER

R03 GRASS CUTTING

FILM BATCH NO: 4731/16



BEFORE

FILM BATCH NO: 4731/17



IN PROGRESS

FILM BATCH NO: 4731/20



AFTER

R 04

**PENYENGGARAAN
PERABOT JALAN
(ROAD FURNITURE)**

DISTRICT : KUDAT
ROUTE NO. : 01 JALAN KOTA KINABALU-KUDAT

LOCATION : KM 182.632

R04 ROAD FURNITURE

FILM BATCH NO: 0982/5



BEFORE

FILM BATCH NO: 0982/6



IN PROGRESS

FILM BATCH NO: 0982/10



AFTER

R04 ROAD FURNITURES

Film Batch No: 0924/15



BEFORE

Film Batch No: 0924/16



IN PROGRESS

Film Batch No: 0924/17



AFTER

R04 ROAD FURNITURES

Film Batch No: 0924/18



BEFORE

Film Batch No: 0924/19



IN PROGRESS

Film Batch No: 0923/23



AFTER

R04 ROAD FURNITURES

Film Batch No: 0953/10



BEFORE

Film Batch No: 0953/11



IN PROGRESS

Film Batch No: 0953/12



AFTER

DISTRICT : PENAMPANG
ROUTE NO. : 500 JALAN KOTA KINABALU - KENINGAU - TENOM

LOCATION : KM 26.800 (RHS)

R04 ROAD FURNITURES

Film Batch No: 0959/1



BEFORE

Film Batch No: 0959/2



IN PROGRESS

Film Batch No: 0959/3



AFTER

R04 ROAD FURNITURES

Film Batch No: 0949/11



BEFORE

Film Batch No: 0949/12



IN PROGRESS

Film Batch No: 0941/10



AFTER

R04 ROAD FURNITURES - PAINTING

FILM BATCH NO: 2463/5



BEFORE

FILM BATCH NO: 2463/8



IN PROGRESS

FILM BATCH NO: 0187/16



AFTER

R04: ROAD FURNITURE

FILM BATCH NO: 0069/4



BEFORE

FILM BATCH NO: 0069/5



IN PROGRESS

FILM BATCH NO: 0069/6



AFTER

R04 ROAD FURNITURES

FILM BATCH NO: 4693/17



BEFORE

FILM BATCH NO: 4693/18



IN PROGRESS

FILM BATCH NO: 4731/2



AFTER

R 05

**PENYENGGARAAN
JAMBATAN & PEMBENTUNG
(BRIDGES & CULVERTS)**

FILM BATCH NO: 0961/29



BEFORE

FILM BATCH NO: 0961/30



IN PROGRESS

FILM BATCH NO: 0961/31



AFTER

R05 BRIDGE & CULVERT

FILM BATCH NO: 1395/10



BEFORE

FILM BATCH NO: 1395/11



IN PROGRESS

FILM BATCH NO: 1395/12



AFTER

R05 BRIDGE & CULVERT

FILM BATCH NO: 1395/30



BEFORE

FILM BATCH NO: 1395/31



IN PROGRESS

FILM BATCH NO: 1395/32



AFTER

R05 CULVERTS

Film Batch No: 0923/24



BEFORE

Film Batch No: 0923/24A



IN PROGRESS

Film Batch No: 0936/24



AFTER

R05 CULVERTS

Film Batch No: 0934/6



BEFORE

Film Batch No: 0937/7



IN PROGRESS

Film Batch No: 0935/0



AFTER

R05: BRIDGES & CULVERTS

FILM BATCH NO: 0655/2



BEFORE

FILM BATCH NO: 0655/3



IN PROGRESS

FILM BATCH NO: 0655/4



AFTER

R05 BRIDGES & CULVERTS

FILM BATCH NO: 4792/18



BEFORE

FILM BATCH NO: 4792/19



IN PROGRESS

FILM BATCH NO: 4792/20



AFTER

R 07

**PENYENGGARAAN
LONGKANG
(DRAINAGE)**

R07 DRAINAGE

FILM BATCH NO: 0961/16



BEFORE

FILM BATCH NO: 0961/17



IN PROGRESS

FILM BATCH NO: 0961/18



AFTER

R07 DRAINAGE

FILM BATCH NO: 1395/24



BEFORE

FILM BATCH NO: 1395/25



IN PROGRESS

FILM BATCH NO: 1395/26



AFTER



R07 DRAINAGE

Film Batch No: 0974/4



BEFORE

Film Batch No: 0974/3



IN PROGRESS

Film Batch No: 0974/13



AFTER

R07 DRAINAGE

Film Batch No: 0962/2



BEFORE

Film Batch No: 0962/3



IN PROGRESS

Film Batch No: 0962/4



AFTER

R07 DRAINAGE

Film Batch No: 0948/2



BEFORE

Film Batch No: 0948/3



IN PROGRESS

Film Batch No: 0948/10



AFTER



R07 DRAINAGE

Film Batch No: 0981/14



BEFORE

Film Batch No: 0981/15



IN PROGRESS

Film Batch No: 0981/21



AFTER



R07 DRAINAGE

FILM BATCH NO: 0333/14



BEFORE

FILM BATCH NO: 0333/17



IN PROGRESS

FILM BATCH NO: 0333/25



AFTER

R07: DRAINAGE

FILM BATCH NO: 0284/10



BEFORE

FILM BATCH NO: 0284/12



IN PROGRESS

FILM BATCH NO: 0598/1



AFTER



R07 DRAINAGE

FILM BATCH NO:4761/9



BEFORE

FILM BATCH NO:4761/10



IN PROGRESS

FILM BATCH NO:4761/13



AFTER



B

**PEMERIKSAAN
RUTIN
(INSPECTION)**

DISTRICT : KUDAT
ROUTE NO. : 01 JALAN KOTA KINABALU-KUDAT

LOCATION : KM 141.732

CARCASSES

FILM BATCH NO: 0961/29



BEFORE

FILM BATCH NO: 0982/29



AFTER

CARCASS

Film Batch No: 0947/10



BEFORE

Film Batch No: 0947/11



IN PROGRESS

Film Batch No: 0947/12



AFTER

DISTRICT : RANAU

ROUTE NO. : 22 JALAN KOTA KINABALU-SANDAKAN

LOCATION : CH 125.980 (KM 162.580)

ROUTINE INSPECTION

FILM BATCH NO: 2463/18



BEFORE

FILM BATCH NO: 2463/19



IN PROGRESS

FILM BATCH NO: 2463/22



AFTER



DISTRICT : RANAU
ROUTE NO. : 22 JALAN KOTA KINABALU-SANDAKAN

LOCATION : CH 51.300 (KM 87.900)

ROUTINE INSPECTION

FILM BATCH NO: 2334/19



BEFORE

FILM BATCH NO: 2334/20



IN PROGRESS

FILM BATCH NO: 2334/21



AFTER



KERJA-KERJA BERKALA

BUKAN PAVMEN
(NON PAVEMENT)

PENYERAHAN BERASINGAN

KERJA-KERJA BERKALA

PAVEMEN
(PAVEMENT)

PENYERAHAN BERASINGAN

KERJA-KERJA KECEMASAN
(EMERGENCY WORKS)

