

**PENSWASTAAN PENYENGGARAAN  
JALAN-JALAN PERSEKUTUAN DI SABAH  
(PANTAI BARAT & PENDALAMAN)**



**THE GOVERNMENT OF MALAYSIA**

**LAPORAN KEMAJUAN BULANAN  
No. 7**

**MAC 2004**



*Jabatan Kerja Raya, Negeri Sabah*

*Kontraktor : Lintasan Resources Sdn. Bhd. 566483-H*

# **LINTASAN RESOURCES SDN. BHD.**

PENSWASTAAN PENYENGGARAAN JALAN-JALAN  
PERSEKUTUAN DI SABAH (PANTAI BARAT & PENDALAMAN)

---

## **LAPORAN KEMAJUAN BULANAN MAC 2004**

---

### **ISI KANDUNGAN**

**Bil:**            **PERKARA**

1.            Laporan Eksekutif Projek
2.            Carta Organisasi Syarikat
3.            Lokasi Jalan Persekutuan
4.            Ringkasan Laporan Kemajuan Bulanan
5.            R 01 - Penyenggaraan Permukaan Jalan
6.            R 02 - Penyenggaraan Bahu Jalan
7.            R 03 - Pemetongan Rumput
8.            R 04 - Penyenggaraan Perabot Jalan
9.            R 05 - Penyenggaraan Jambatan dan Pembentung
10.          R 07 - Penyenggaraan Longkang
11.          B    - Pemeriksaan Rutin
12.          Kerja-Kerja Kecemasan

**LAPORAN  
EKSEKUTIF PROJEK**

## LAPORAN EKSEKUTIF PROJEK

---

<b>TAJUK KONTRAK</b>	:	PENSWASTAAN PENYENGGARAAN JALAN-JALAN PERSEKUTUAN DI SABAH (PANTAI BARAT & PENDALAMAN)
<b>KLIEN</b>	:	JABATAN KERJA RAYA, SABAH
<b>SYARIKAT</b>	:	LINTASAN RESOURCES SDN. BHD. Lot 1, Block A, Ground Floor, Wisma TP Mile 1 ½, Tuaran Road 88400 Kota Kinabalu, Sabah, Malaysia.
<b>TEMPOH</b>	:	15 TAHUN
<b>TARIKH MULA</b>	:	01hb September 2003
<b>TARIKH TAMAT</b>	:	31hb August 2018
<b>KAWASAN</b>	:	PANTAI BARAT & PENDALAMAN
<b>JALAN TERLIBAT</b>	:	Semua Jalan-Jalan Persekutuan Yang Diwartakan Dibawah Akta Jalan Persekutuan 1959
<b>PANJANG JALAN</b>	:	764.85 Kilometer
<b>KATOGORI JALAN</b>	:	a) Jalan Protocol b) Jalan Utama c) Jalan Sekunder
<b>SKOP KERJA</b>	:	a) Penyenggaraan Rutin b) Kerja-Kerja Kecemasan

### **RINGKASAN LAPORAN :**

#### ROUTINE MAINTENANCE

Prevailing conducive weather condition has given the Concessionaire much opportunity to implement the maintenance programmes and objectives in a more systematic manner. Generally, road conditions are improving by the days. A drive along any Federal Road on the West Coast of Sabah and the Interior is no longer a dread. In particular, it is indeed pleasant drive from Kota Kinabalu to Beaufort and beyond where shoulder and roadside drains are properly shaped and road surface are devoid of potholes. With the improved weather, the amount of emergency works such as fallen trees, landslides, etc. are on the decrease and more workers can be redeployed to attend to other routine maintenance.

#### PERIODIC MAINTENANCE

The 2004 Periodic Maintenance Programme has now been approved. Though the approved amount has fallen far short of expectation, nevertheless we are hopeful that with what has been approved, the road condition within the Concessionaire's jurisdiction will be further improved and enhanced. Pending the issuance of the Arahan Keja, the Concessionaire is in a state of readiness to commence the Periodic works.

Originally, the proposal called for a sum of money to be set aside for heavy patching (beyond the normal scope of pothole patching) for areas undefined especially on roads where road conditions are such that reconstruction is necessary and yet still have no specific funds for such purpose. However, due to funding constraint, no approval is given. Despite that, the Concessionaire will endeavour to upkeep the road condition, hoping that more funds would be given when funding situation improves.

#### EMERGENCY WORK

When you least expect, things happen. Landslide and rockfall occurred at KM82.20 along Jalan Kota Kinabalu-Sandakan on the late afternoon of 27<sup>th</sup> March 2004. The Concessionaire has been kept busy clearing the fallen debris and rock round the clock, closely monitoring the situation and ensure the safe passage of vehicles. In times of foggy weather and at night, such tasks are all the more difficult. Controlled road closure and one lane traffic each time have been exercised.

The Double-Single Reinforced Bailey Bridge at Sg. Bintasan, Kota Marudu has now been modified to one of Double-Double Reinforced, thereby increasing the tonnage capacity of the bridge from 20 to 40.

**CARTA  
ORGANISASI SYARIKAT**



**LOKASI  
JALAN PERSEKUTUAN  
DI  
SABAH  
(PANTAI BARAT & PENDALAMAN)**

**RINGKASAN  
LAPORAN KEMAJUAN  
BULANAN**

**KERJA-KERJA RUTIN**  
(ROUTINE MAINTENANCE)

**R 01**

**PENYENGGARAAN  
PERMUKAAN JALAN  
(POTHOLE PATCHING)**

**R01 POTHOLE PATCHING**

FILM BATCH NO: 0735/4



FILM BATCH NO: 0735/7



FILM BATCH NO: 0735/9



**R01 POTHOLE PATCHING**

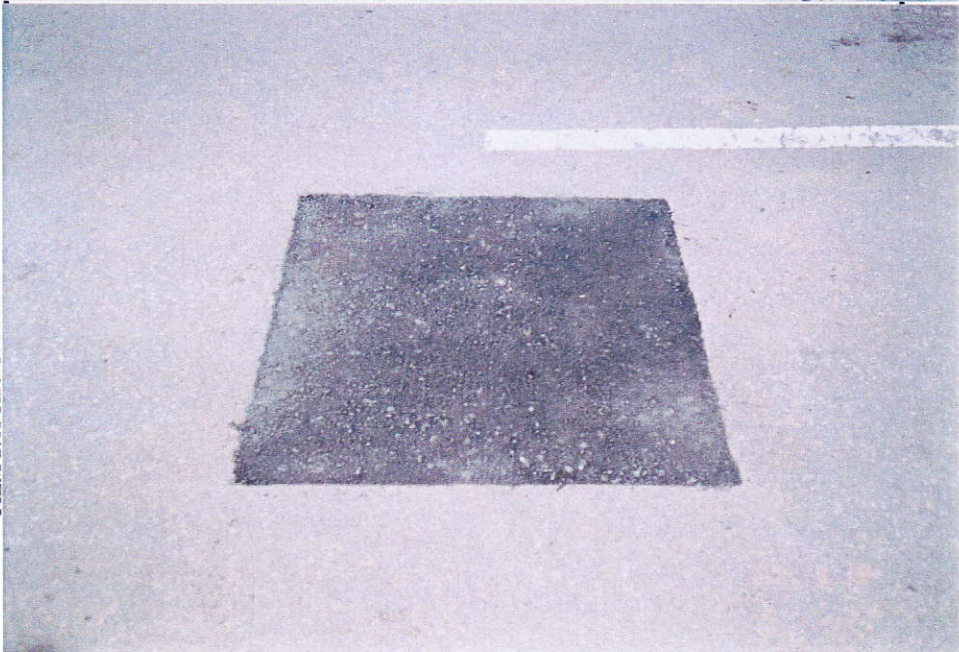
FILM BATCH NO: 0735/16



FILM BATCH NO: 0735/17



FILM BATCH NO: 0735/18



### R01 POTHOLES PATCHING

Film Batch No: 0757/5



BEFORE

Film Batch No: 0757/6



IN PROGRESS

Film Batch No: 0757/7



AFTER

R01 PAVEMENT

Film Batch No: 0795/3



BEFORE

Film Batch No: 0795/4



IN PROGRESS

Film Batch No: 0806/6



AFTER

R01 PAVEMENT ( Sealing of crack )

Film Batch No: 0760/3



IN PROGRESS

Film Batch No: 0760/5



IN PROGRESS

Film Batch No: 0760/8



AFTER

**R01 POTHOLE PATCHING**

FILM BATCH NO:4498/2



BEFORE

FILM BATCH NO:4498/4



IN PROGRESS

FILM BATCH NO:4498/7



AFTER

**R01 PAVEMENT**

FILM BATCH NO:4367/01



BEFORE

FILM BATCH NO:44367/02



IN PROGRESS

FILM BATCH NO:4367/07



AFTER

**LINTASAN RESOURCES SDN BHD** (566483-H)  
 PRIVATISATION OF WEST COAST SABAH FEDERAL ROADS MAINTENANCE

**SUMMARY FOR R01 - POTHOLES PATCHING RECORD**

Ending Period : 31 March 2004

ITEM	DISTRICT	ROUTE NO.	ROADNAME	AREA ( m <sup>2</sup> )		PREMIX QUANTITY ( TON )			
				PREVIOUS MONTH	CURRENT MONTH	CUM. MONTH	PREVIOUS MONTH	CURRENT MONTH	CUM. MONTH
1	KOTA BELUD	01	Jalan Kota Kinabalu - Kudat	687.68	187.77	875.45	83.48	22.85	106.33
2	KOTA MARUDU	01	Jalan Kota Kinabalu - Kudat	41.56	0.48	42.04	5.02	0.06	5.08
3	KUDAT	01	Jalan Kota Kinabalu - Kudat	83.55	0.70	84.25	10.04	0.08	10.12
<b>TOTAL</b>				<b>812.79</b>	<b>188.95</b>	<b>1,001.74</b>	<b>98.54</b>	<b>22.99</b>	<b>121.53</b>

**LINTASAN RESOURCES SDN BHD** (566483-H)  
**PRIVATISATION OF WEST COAST SABAH FEDERAL ROADS MAINTENANCE**

SUMMARY FOR R01 - POTHLES PATCHING RECORD

Ending Period : 31<sup>st</sup> March 2004

ITEM	DISTRICT	ROUTE NO.	ROADNAME	AREA ( m <sup>2</sup> )		PREMIX QUANTITY ( TON )			
				PREVIOUS MONTH	CURRENT MONTH	CUM. MONTH	PREVIOUS MONTH	CURRENT MONTH	CUM. MONTH
1	Kota Kinabalu	01	Jalan Kota Kinabalu - Kudat	2,031.05	217.01	2,248.06	319.92	27.20	347.12
2	Kota Kinabalu	01	Jalan Kota Kinabalu - Sindumin	62.41	-	62.41	10.34	-	10.34
3	Kota Kinabalu	606	Jalan Susur Sepangar Bay	203.81	14.83	218.64	31.72	1.78	33.50
4	Kota Kinabalu	607	Jalan masuk ke Pelabuhan Baru, K.K.	16.94	-	16.94	2.42	-	2.42
5	Kota Kinabalu	608	Jalan masuk ke Lapangan Terbang Lama, K.K.	30.97	-	30.97	4.15	-	4.15
6	Penampang	500	Jalan Kota Kinabalu - Keningau - Tenom	767.97	283.52	1,051.49	108.28	36.82	145.10
7	Penampang	501	Jalan Kota Kinabalu - Penampang - Lok Kawi	304.19	112.79	416.98	46.20	16.39	62.59
8	Penampang	01	Jalan Kota Kinabalu - Sindumin	14.45	12.57	27.02	1.72	1.50	3.22
9	Papar	01	Jalan Kota Kinabalu - Sindumin	1,423.77	249.22	1,672.99	200.72	37.96	238.68
10	Tuaran	01	Jalan Kota Kinabalu - Kudat	716.07	311.86	1,027.93	138.23	40.80	179.03
11	Tuaran	503	Jalan Berungis - Kota Belud	77.45	-	77.45	12.48	-	12.48
12	Tuaran	22	Jalan Kota Kinabalu - Sandakan	503.00	-	503.00	71.09	-	71.09
<b>TOTAL</b>				<b>6,152.08</b>	<b>1,201.80</b>	<b>7,353.88</b>	<b>947.27</b>	<b>162.45</b>	<b>1,109.72</b>

**LINTASAN RESOURCES SDN BHD** (566483-H)  
 PRIVATISATION OF WEST COAST SABAH FEDERAL ROADS MAINTENANCE

**SUMMARY FOR R01 - POTHLES PATCHING RECORD**

**Ending Period : 31st March 2004**

ITEM	DISTRICT	ROUTE NO.	ROADNAME	AREA ( m <sup>2</sup> )			PREMIX QUANTITY ( TON )		
				PREVIOUS MONTH	CURRENT MONTH	CUM. MONTH	PREVIOUS MONTH	CURRENT MONTH	CUM. MONTH
1	Ranau	22	Jalan Kota Kinabalu - Sandakan	1,228.82	105.10	1,333.92	254.23	18.34	272.57
<b>TOTAL</b>				<b>1,228.82</b>	<b>105.10</b>	<b>1,333.92</b>	<b>254.23</b>	<b>18.34</b>	<b>272.57</b>

1694

**LINTASAN RESOURCES SDN BHD** (566483-H)  
 PRIVATISATION OF WEST COAST SABAH FEDERAL ROADS MAINTENANCE

SUMMARY FOR R01 - POTHoles PATCHING RECORD

Ending Period : 30hb MARCH 2004

ITEM	DISTRICT	ROUTE NO.	ROADNAME	AREA ( m <sup>2</sup> )		PREMIX QUANTITY ( TON )		
				PREVIOUS MONTH	CURRENT MONTH	PREVIOUS MONTH	CURRENT MONTH	CUM. MONTH
1	Tambunan	500	Jalan Kota Kinabalu - Keningau - Tenom	289.97	7.21	37.53	0.86	38.39
2	Keningau	500	Jalan Kota Kinabalu - Keningau - Tenom	11.72	0.00	1.54	0.00	1.54
3	Tenom	500	Jalan Kota Kinabalu - Keningau - Tenom	23.25	0.00	3.36	0.00	3.36
<b>TOTAL</b>				<b>324.94</b>	<b>7.21</b>	<b>42.43</b>	<b>0.86</b>	<b>43.29</b>

**LINTASAN RESOURCES SDN BHD** (566483-H)  
 PRIVATISATION OF WEST COAST SABAH FEDERAL ROADS MAINTENANCE

SUMMARY FOR R01 - POTHOLES PATCHING RECORD

Ending Period : 31st March 2004

ITEM	DISTRICT	ROUTE NO.	ROADNAME	AREA ( m <sup>2</sup> )			PREMIX QUANTITY ( TON )		
				PREVIOUS MONTH	CURRENT MONTH	CUM. MONTH	PREVIOUS MONTH	CURRENT MONTH	CUM. MONTH
1	Beaufort	01	Jalan Kota Kinabalu - Sindumin	199.91	42.87	242.78	25.15	5.16	30.31
2	Beaufort	502	Jalan Beaufort-Menumbok	154.06	69.87	223.93	18.52	8.37	26.89
3	Sipitang	01	Jalan Kota Kinabalu - Sindumin	127.17	11.62	138.79	15.50	1.40	16.90
4	Kuala Penyu	502	Jalan Beaufort-Menumbok	55.34	0.00	55.34	6.64	0.00	6.64
<b>TOTAL</b>				<b>536.48</b>	<b>124.36</b>	<b>660.84</b>	<b>65.81</b>	<b>14.93</b>	<b>80.74</b>

**R 02**

**PENYENGGARAAN  
BAHU JALAN  
(SHOULDER)**

DISTRICT : PENAMPANG

ROUTE NO. : 501 JALAN KOTA KINABALU - PENAMPANG - LOK KAWI

LOCATION : KM (6.7) RHS

**R02 SHOULDER - PAVIOR BLOCKS(Remove Vegetation)**

Film Batch No: 0725/11



BEFORE

Film Batch No: 0725/12



IN PROGRESS

Film Batch No: 0739/12



AFTER

FILM BATCH NO:4498/8



BEFORE

FILM BATCH NO:4498/9



IN PROGRESS

FILM BATCH NO:4498/13



AFTER

**LINTASAN RESOURCES SDN BHD** (566483-H)  
PRIVATISATION OF WEST COAST SABAH FEDERAL ROADS MAINTENANCE

**SUMMARY FOR R02 - SHOULDER REPAIR RECORD**

ITEM	DISTRICT	ROUTE NO.	ROADNAME	EARTH SHOULDER AREA (m <sup>2</sup> )	GRAVEL SHOULDER AREA (m <sup>2</sup> )
1	Ranau	22	Jalan Kota Kinabalu - Sandakan	79.20	371.55
<b>TOTAL</b>				<b>79.20</b>	<b>371.55</b>

Checked & Certified Correct By :

Checked & Certified Correct By :

\_\_\_\_\_  
For Lintasan Resources Sdn Bhd

\_\_\_\_\_  
For Jabatan Kerja Raya

**LINTASAN RESOURCES SDN BHD** (566483-H)  
**PRIVATISATION OF WEST COAST SABAH FEDERAL ROADS MAINTENANCE**

SUMMARY FOR R02 - SHOULDER REPAIR RECORD

Ending Period : 31st March 2004

ITEM	DISTRICT	ROUTE NO.	ROADNAME	AREA ( m <sup>2</sup> ) - Earth Shoulder		AREA ( m <sup>2</sup> ) - Gravel Shoulder	
				PREVIOUS MONTH	CURRENT MONTH	PREVIOUS MONTH	CURRENT MONTH
1	Beaufort	01	Jalan Kota Kinabalu - Sindumin	24.50	2.50	59.24	30.83
2	Beaufort	502	Jalan Beaufort-Menumbok	175.00	0.00	54.72	0.00
3	Sipitang	01	Jalan Kota Kinabalu - Sindumin	0.00	0.00	33.85	0.00
4	Kuala Penyu	502	Jalan Beaufort-Menumbok	0.00	0.00	119.70	0.00
<b>TOTAL</b>				<b>199.50</b>	<b>2.50</b>	<b>267.51</b>	<b>30.83</b>
							<b>298.34</b>

**R 03**

**PEMOTONGAN  
RUMPUT  
(GRASS CUTTING)**

DISTRICT : KUDAT  
ROUTE NO. : 01 JALAN KOTA KINABALU-KUDAT

LOCATION : KM17.232 RHS

### R03 GRASS CUTTING

FILM BATCH NO: 3814/31



FILM BATCH NO: 3814/33



FILM BATCH NO: 3813/36



**R03 GRASS CUTTING**

FILM BATCH NO: 3814/32



FILM BATCH NO: 3814/35



FILM BATCH NO: 3813/9



**R03 GRASS CUTTING**

Film Batch No: 0731/4



**BEFORE**

Film Batch No: 0731/5



**IN PROGRESS**

Film Batch No: 0731/8



**AFTER**

**R03 GRASS CUTTING**

Film Batch No: 0744/3



**BEFORE**

Film Batch No: 0744/4



**IN PROGRESS**

Film Batch No: 0766/4



**AFTER**

R03: GRASS CUTTING

FILM BATCH NO:2044/10



BEFORE

FILM BATCH NO:2044/11



IN PROGRESS

FILM BATCH NO:1203/1



AFTER

R03: GRASS CUTTING

FILM BATCH NO:1803/4



BEFORE

FILM BATCH NO:2044/6



IN PROGRESS

FILM BATCH NO:2044/7



AFTER

**R 04**

**PENYENGGARAAN  
PERABOT JALAN  
(ROAD FURNITURE)**

DISTRICT : PENAMPANG

ROUTE NO. : 501 JALAN KOTA KINABALU - PENAMPANG - LOK KAWI

LOCATION : KM (4.1) RHS

### R04 ROAD FURNITURES

Film Batch No: 0756/4



BEFORE

Film Batch No: 0756/5



IN PROGRESS

Film Batch No: 0756/6



AFTER

R04 ROAD FURNITURES

Film Batch No: 0745/6



BEFORE

Film Batch No: 0745/7



IN PROGRESS

Film Batch No: 0745/8



AFTER

R04 ROAD FURNITURES

Film Batch No: 0745/9



BEFORE

Film Batch No: 0745/10



IN PROGRESS

Film Batch No: 0745/11



AFTER

**R04 ROAD FURNITURES**

FILM BATCH NO: 0797/9A



**BEFORE**

FILM BATCH NO: 0797/10A



**IN PROGRESS**

FILM BATCH NO: 0797/11A



**AFTER**

R04 ROAD FURNITURES

Film Batch No: 0787/17



BEFORE

Film Batch No: 0787/18



IN PROGRESS

Film Batch No: 0787/19



AFTER

FILM BATCH NO: 4373/19



BEFORE

FILM BATCH NO: 4373/20



IN PROGRESS

FILM BATCH NO: 4373/21



AFTER

FILM BATCH NO: 4295/5



BEFORE

FILM BATCH NO: 4295/6



IN PROGRESS

FILM BATCH NO: 4373/7



AFTER

FILM BATCH NO:4295/3



BEFORE

FILM BATCH NO:4295/4



IN PROGRESS

FILM BATCH NO:4295/9



AFTER

FILM BATCH NO: 4322/3



BEFORE

FILM BATCH NO: 4322/5



IN PROGRESS

FILM BATCH NO: 4322/8



AFTER

FILM BATCH NO: 4322/4



BEFORE

FILM BATCH NO: 4322/6



IN PROGRESS

FILM BATCH NO: 4322/9



AFTER

**R04 ROAD FURNITURES**

FILM BATCH NO:4449/2



BEFORE

FILM BATCH NO:4449/3



IN PROGRESS

FILM BATCH NO : 4449/4



AFTER

**R 05**

**PENYENGGARAAN  
JAMBATAN & PEMBENTUNG  
(BRIDGES & CULVERTS)**

R05 CULVERTS

Film Batch No: 0809/00



BEFORE

Film Batch No: 0809/0



IN PROGRESS

Film Batch No: 0809/1



AFTER

R05 CULVERTS

Film Batch No: 0809/8



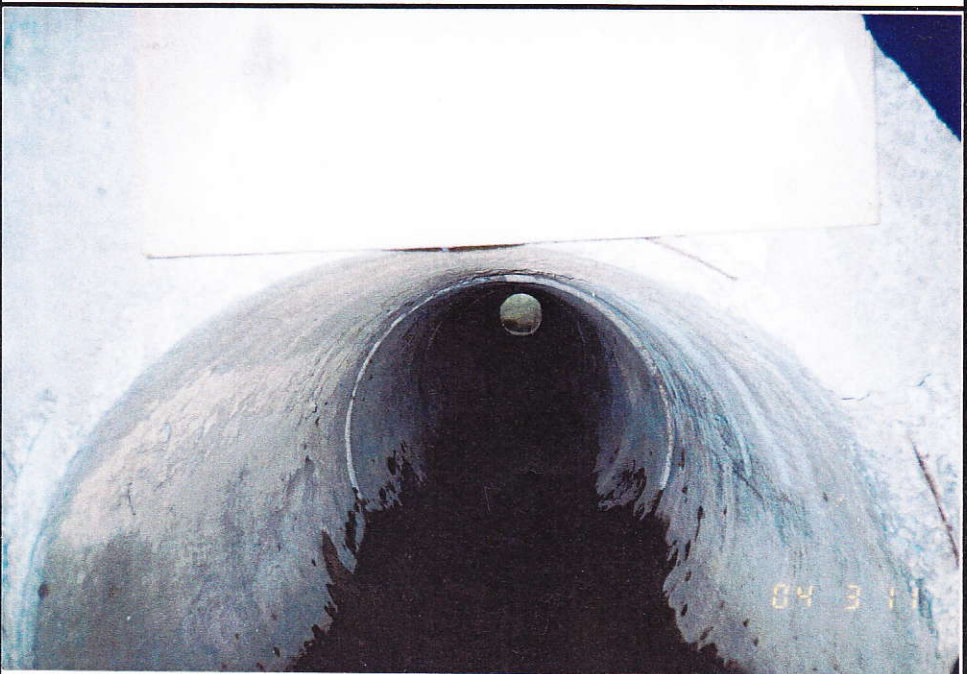
BEFORE

Film Batch No: 0809/9



IN PROGRESS

Film Batch No: 0809/10



AFTER

DISTRICT : PENAMPANG

ROUTE NO. : 501 JALAN KOTA KINABALU-PENAMPANG-LOK KAWI

LOCATION : KM8.980(RHS)  
( CH 6.029 )

### R05 CULVERTS

Film Batch No. 0807/18



BEFORE

Film Batch No. 0807/19



IN PROGRESS

DISTRICT : PENAMPANG

ROUTE NO. : 501 JALAN KOTA KINABALU-PENAMPANG-LOK KAWI

LOCATION : KM8.980(RHS)  
( CH 6.029 )

### R05 CULVERTS

Film Batch No. 0819/7



Film Batch No. 0819/8



AFTER

R05 CULVERTS

Film Batch No: 0819/9



BEFORE

Film Batch No: 0819/11



IN PROGRESS

Film Batch No: 0819/12A



AFTER

**R05 BRIDGES & CULVERTS**

FILM BATCH NO: 4449/19



**BEFORE**

FILM BATCH NO: 4449/20



**IN PROGRESS**

FILM BATCH NO : 4498/10



**AFTER**

**R05 BRIDGES & CULVERTS**

FILM BATCH NO:4449/15



**BEFORE**

FILM BATCH NO:4449/16



**IN PROGRESS**

FILM BATCH NO:4449/21



**AFTER**

**R05 BRIDGES & CULVERTS**

FILM BATCH NO:4488/6



BEFORE

FILM BATCH NO:4488/8



IN PROGRESS

FILM BATCH NO:4488/9



AFTER

**R 07**

**PENYENGGARAAN  
LONGKANG  
(DRAINAGE)**

**R07 DRAINAGE**

FILM BATCH NO: 3814/1



FILM BATCH NO: 3814/2



FILM BATCH NO:



**R07 DRAINAGE**

FILM BATCH NO: 3829/1



FILM BATCH NO: 3829/2



FILM BATCH NO: 3829/3



DISTRICT : KOTA MARUDU  
ROUTE NO. : 01 JALAN KOTA KINABALU-KUDAT

LOCATION : KM 128.532RHS

**R07 DRAINAGE**



FILM BATCH NO: 0735/2

**BEFORE**



FILM BATCH NO: 0735/12

**AFTER**

**R07 DRAINAGE**

Film Batch No: 0720/12



**BEFORE**

Film Batch No: 0720/12A



**IN PROGRESS**

Film Batch No: 0730/2



**AFTER**

DISTRICT : PENAMPANG

ROUTE NO. : 501 JALAN KOTA KINABALU - PENAMPANG - LOK KAWI

LOCATION : KM (4.6 ) RHS

### R07 DRAINAGE

Film Batch No: 0725/4



BEFORE

Film Batch No: 0725/6



IN PROGRESS

Film Batch No: 0739/4



AFTER

R07 DRAINAGE

Film Batch No: 0788/5



BEFORE

Film Batch No: 0788/6



IN PROGRESS

Film Batch No: 0796/8A



AFTER

R03: DRAINAGE

FILM BATCH NO:1103/1



BEFORE

FILM BATCH NO:1103/2



IN PROGRESS

FILM BATCH NO:2244/0



AFTER

R07: DRAINAGE

FILM BATCH NO:1686/2



BEFORE

FILM BATCH NO:2362/3



IN PROGRESS

FILM BATCH NO:2362/12



AFTER

**R07 DRAINAGE**

FILM BATCH NO:4449/7



**BEFORE**

FILM BATCH NO:4449/8



**IN PROGRESS**

FILM BATCH NO:4449/18



**AFTER**

**R07 DRAINAGE**

FILM BATCH NO:4373/4



**BEFORE**

FILM BATCH NO:4373/5



**IN PROGRESS**

FILM BATCH NO:4373/6



**AFTER**

**B**

**PEMERIKSAAN  
RUTIN  
(INSPECTION)**

DISTRICT :KOTA MARUDU  
ROUTE NO. : 01 JALAN KOTA KINABALU-KUDAT

LOCATION : KM 133.992

### CARCASSES

FILM BATCH NO: 0735/1



FILM BATCH NO: 3987/20



CARCASS

Film Batch No: 0745/20



BEFORE

Film Batch No: 0745/21



IN PROGRESS

Film Batch No: 0745/22



AFTER

### ROUTINE INSPECTION

FILM BATCH NO: 1243/1



BEFORE

FILM BATCH NO: 1243/2



IN PROGRESS

FILM BATCH NO: 1243/3



AFTER

DISTRICT : BEAUFORT  
ROUTE NO. : 01 JALAN KOTA KINABALU - SINDUMIN LOCATION : CH75.520 (KM77.280)

**(B) ROUTINE INSPECTION**

FILM BATCH NO: 4498/5



**BEFORE**

FILM BATCH NO: 4498/6



**AFTER**

DISTRICT : KUALU PENYU  
ROUTE NO. : 502 JALAN BEAUFORT - MENUMBOK LOCATION : CH47.750 (KM47.750)

**ROUTINE INSPECTION**



**BEFORE**



**AFTER**