

**PENSWASTAAN PENYENGGARAAN
JALAN-JALAN PERSEKUTUAN DI SABAH
(PANTAI BARAT & PENDALAMAN)**



THE GOVERNMENT OF MALAYSIA

**LAPORAN KEMAJUAN BULANAN
No. 6**

FEBRUARI 2004



Jabatan Kerja Raya, Negeri Sabah

Kontraktor : Lintasan Resources Sdn. Bhd. 566483-H

LINTASAN RESOURCES SDN. BHD.

PENSWASTAAN PENYENGGARAAN JALAN-JALAN
PERSEKUTUAN DI SABAH (PANTAI BARAT & PENDALAMAN)

LAPORAN KEMAJUAN BULANAN FEBRUARI 2004

ISI KANDUNGAN

Bil: **PERKARA**

1. Laporan Eksekutif Projek
2. Carta Organisasi Syarikat
3. Lokasi Jalan Persekutuan
4. Ringkasan Laporan Kemajuan Bulanan
5. R 01 - Penyenggaraan Permukaan Jalan
6. R 02 - Penyenggaraan Bahu Jalan
7. R 03 - Pemetongan Rumput
8. R 04 - Penyenggaraan Perabot Jalan
9. R 05 - Penyenggaraan Jambatan dan Pembentung
10. R 07 - Penyenggaraan Longkang
11. B - Pemeriksaan Rutin
12. Kerja-Kerja Kecemasan

**LAPORAN
EKSEKUTIF PROJEK**

LAPORAN EKSEKUTIF PROJEK

TAJUK KONTRAK	:	PENSWASTAAN PENYENGGARAAN JALAN-JALAN PERSEKUTUAN DI SABAH (PANTAI BARAT & PENDALAMAN)
KLIEN	:	JABATAN KERJA RAYA, SABAH
SYARIKAT	:	LINTASAN RESOURCES SDN. BHD. Lot 1, Block A, Ground Floor, Wisma TP Mile 1 ½, Tuaran Road 88400 Kota Kinabalu, Sabah, Malaysia.
TEMPOH	:	15 TAHUN
TARIKH MULA	:	01hb September 2003
TARIKH TAMAT	:	31hb August 2018
KAWASAN	:	PANTAI BARAT & PENDALAMAN
JALAN TERLIBAT	:	Semua Jalan-Jalan Persekutuan Yang Diwartakan Dibawah Akta Jalan Persekutuan 1959
PANJANG JALAN	:	764.85 Kilometer
KATOGORI JALAN	:	a) Jalan Protocol b) Jalan Utama c) Jalan Sekunder
SKOP KERJA	:	a) Penyenggaraan Rutin b) Kerja-Kerja Kecemasan

RINGKASAN LAPORAN :

ROUTINE MAINTENANCE

With the holiday season behind us and the much improved weather, things are gradually returning to normal. During the month of February, we have had time to catch up with the patching of potholes that developed due to the wet weather of the past month. Work on crack sealing has also started and road shoulders are generally of better shape as a result of more concerted effort on the part of the Concessionaire. Since the inception of the concession, none of our areas has been found to be inundated by flood. This proves that our constant drain and culvert clearing have been effective.

PERIODIC PROGRAMME & MAINTENANCE

Programme and revised Programme for 2004 Periodic Maintenance have been submitted to the agency concerned. We are hopeful for an early decision to commence work in view of the much improved weather.

As some of the roads within the concession are in fairly bad shape, provision of funds for heavy patching and reconstruction inclusive of drainage improvement are absolutely necessary and are being awaited eagerly.

EMERGENCY WORK

There has been no fresh report on slopes and embankment failures apart from what has been reported previously. However, there is great urgency to repair what has been reported notably the 6 bridges along Jalan Kota Kinabalu-Kudat Road, namely Sg. Batutai, Sg. Karangawan, Sg. Tigaman Razak, Sg. Biraan, Sg. Panikuan and Sg. Bingkongan (reported vide ref: LRSB/HQR-JKR/04/024 dated 20th February 2004). If these repairs are not commenced immediately, there is no guarantee that the bridges will be around after the next heavy downpour. Equally urgent are the embankment problem and failures along Jalan Kota Kinabalu-Sandakan at KM116.7, KM136.0 and KM164.0 reported vide ref: LRSB/HQR-JKR/04/002 dated 9th January 2004. We have also reported other relatively minor slope and embankment failures vide ref: LRSB/HQR-JKR/03/31 dated 17th December 2003.

01/03/2004

**CARTA
ORGANISASI SYARIKAT**

LOKASI
JALAN PERSEKUTUAN
DI
SABAH
(PANTAI BARAT & PENDALAMAN)

**RINGKASAN
LAPORAN KEMAJUAN
BULANAN**

KERJA-KERJA RUTIN
(ROUTINE MAINTENANCE)

R 01

**PENYENGGARAAN
PERMUKAAN JALAN
(POTHOLE PATCHING)**

R01 PAVEMENT

Film Batch No : 0640/21



BEFORE

Film Batch No : 0640/22



IN PROGRESS

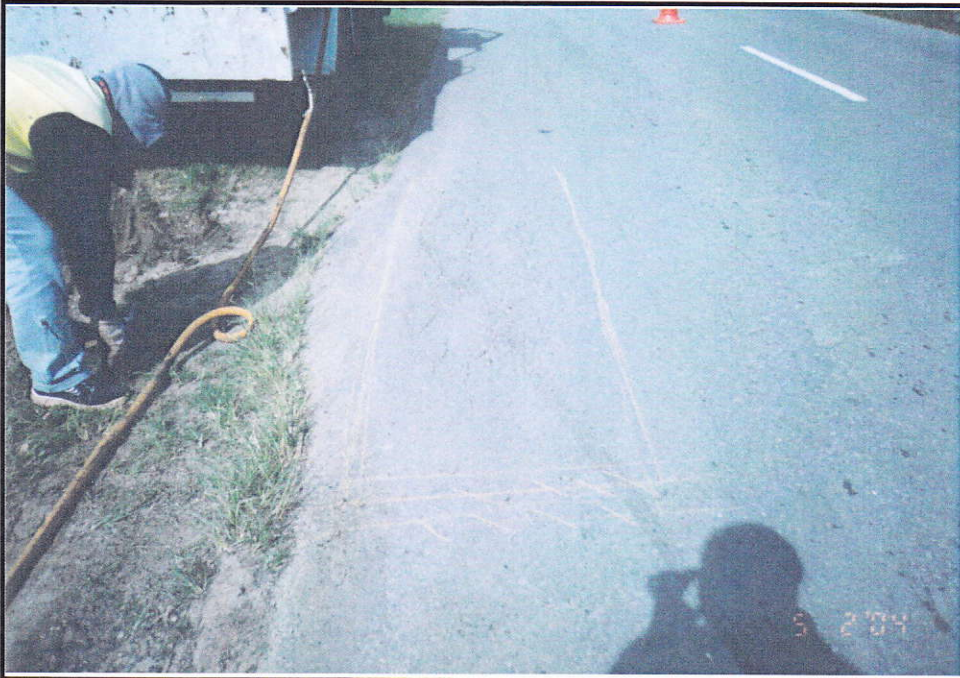
Film Batch No : 0640/23



AFTER

R01 PAVEMENT

Film Batch No : 0663/6



BEFORE

Film Batch No : 0663/8



IN PROGRESS

Film Batch No : 0663/9



AFTER

Film Batch No: 0702/5



BEFORE

Film Batch No: 0702/6



IN PROGRESS

Film Batch No: 0702/8



AFTER

R01: PAVEMENT

FILM BATCH NO:4519/3



BEFORE

FILM BATCH NO:4519/4



IN PROGRESS

FILM BATCH NO:4519/6



AFTER

DISTRICT : KENINGAU

ROUTE NO. : 500 JALAN KK-KGU-TENOM LOCATION (by Km post)

: Km112.200

R01: PAVEMENT

FILM BATCH NO:4519/7



BEFORE

FILM BATCH NO:4519/8



IN PROGRESS

FILM BATCH NO:4519/9



AFTER

DISTRICT : KENINGAU

ROUTE NO. : 500 JALAN KK-KGU-TENOM LOCATION (by Km post)

: Km112.100

R01: PAVEMENT

FILM BATCH NO:4519/10



BEFORE

FILM BATCH NO:4519/11



IN PROGRESS

FILM BATCH NO:4519/12



AFTER

R01 POTHOLE PATCHING

FILM BATCH NO:4190/01



BEFORE

FILM BATCH NO:4190/02



IN PROGRESS

FILM BATCH NO:4190/03



AFTER

SEALING OF CRACKS

FILM BATCH NO:4190/04



BEFORE

FILM BATCH NO:4190/05



IN PROGRESS

FILM BATCH NO:4190/22



AFTER

DISTRICT
ROUTE NO.

: SIPITANG
: 01 JALAN KOTA KINABALU-SINDUMIN

LOCATION : CH151.516(LHS)

SEALING OF CRACKS

FILM BATCH NO:4092/08



BEFORE

FILM BATCH NO:4092/11



IN PROGRESS

FILM BATCH NO:4192/13



AFTER

LINTASAN RESOURCES SDN BHD (566483-H)
 PRIVATISATION OF WEST COAST SABAH FEDERAL ROADS MAINTENANCE

SUMMARY FOR R01 - POTHOLES PATCHING RECORD

Ending Period : 29 February 2004

ITEM	DISTRICT	ROUTE NO.	ROADNAME	AREA (m ²)			PREMIX QUANTITY (TON)		
				PREVIOUS MONTH	CURRENT MONTH	CUM. MONTH	PREVIOUS MONTH	CURRENT MONTH	CUM. MONTH
1	KOTA BELUD	01	Jalan Kota Kinabalu - Kudat	487.05	200.63	687.68	59.00	24.48	83.48
2	KOTA MARUDU	01	Jalan Kota Kinabalu - Kudat						
3	KUDAT	01	Jalan Kota Kinabalu - Kudat	60.03	23.52	83.55	7.22	2.82	10.04
TOTAL				547.08	224.15	771.23	66.22	27.30	93.52

LINTASAN RESOURCES SDN BHD (566483-H)
PRIVATISATION OF WEST COAST SABAH FEDERAL ROADS MAINTENANCE

SUMMARY FOR R01 - POTHOLE PATCHING RECORD

Ending Period : 29th February 2004

ITEM	DISTRICT	ROUTE NO.	ROADNAME	AREA (m ²)		PREMIX QUANTITY (TON)		
				PREVIOUS MONTH	CURRENT MONTH	PREVIOUS MONTH	CURRENT MONTH	PREVIOUS MONTH
1	Kota Kinabalu	01	Jalan Kota Kinabalu - Kudat	2031.05	-	319.92	-	319.92
2	Kota Kinabalu	01	Jalan Kota Kinabalu - Sindumin	44.24	18.17	7.87	2.47	10.34
3	Kota Kinabalu	606	Jalan Susur Sepangar Bay	33.41	170.40	4.93	26.79	31.72
4	Kota Kinabalu	607	Jalan masuk ke Pelabuhan Baru, K.K.	13.64	3.30	1.98	0.44	2.42
5	Kota Kinabalu	608	Jalan masuk ke Lapangan Terbang Lama, K.K.	10.79	20.18	1.49	2.66	4.15
6	Penampang	500	Jalan Kota Kinabalu - Keningau - Tenom	592.83	175.14	85.62	22.66	108.28
7	Penampang	501	Jalan Kota Kinabalu - Penampang - Lok Kawi	239.52	64.67	36.35	9.85	46.20
8	Penampang	01	Jalan Kota Kinabalu - Sindumin	-	14.45	-	1.72	1.72
9	Papar	01	Jalan Kota Kinabalu - Sindumin	932.88	490.89	136.32	64.40	200.72
10	Tuaran	01	Jalan Kota Kinabalu - Kudat	473.36	242.71	107.16	31.07	138.23
11	Tuaran	503	Jalan Berungis - Kota Belud	56.75	20.70	9.48	3.00	12.48
12	Tuaran	22	Jalan Kota Kinabalu - Sandakan	263.72	239.28	41.51	29.58	71.09
TOTAL				4,692.19	1,459.89	752.63	194.64	947.27
				6,152.08				

LINTASAN RESOURCES SDN BHD (566483-H)
 PRIVATISATION OF WEST COAST SABAH FEDERAL ROADS MAINTENANCE

SUMMARY FOR R01 - POTHoles PATCHING RECORD

Ending Period : 29th February 2004

ITEM	DISTRICT	ROUTE NO.	ROADNAME	AREA (m ²)			PREMIX QUANTITY (TON)		
				PREVIOUS MONTH	CURRENT MONTH	CUM. MONTH	PREVIOUS MONTH	CURRENT MONTH	CUM. MONTH
1	Ranau	22	Jalan Kota Kinabalu - Sandakan	992.82	236.00	1,228.82	208.71	45.52	254.23
TOTAL				992.82	236.00	1,228.82	208.71	45.52	254.23

LINTASAN RESOURCES SDN BHD (566483-H)
 PRIVATISATION OF WEST COAST SABAH FEDERAL ROADS MAINTENANCE

SUMMARY FOR R01 - POTHOLE PATCHING RECORD

Ending Period : 29th February 2004

ITEM	DISTRICT	ROUTE NO.	ROADNAME	AREA (m ²)		PREMIX QUANTITY (TON)			
				PREVIOUS MONTH	CURRENT MONTH	CUM. MONTH	PREVIOUS MONTH	CURRENT MONTH	CUM. MONTH
1	Beaufort	01	Jalan Kota Kinabalu - Sindumin	149.89	50.02	199.91	18.10	7.05	25.15
2	Beaufort	502	Jalan Beaufort-Menumbok	114.31	39.75	154.06	13.74	4.78	18.52
3	Sipitang	01	Jalan Kota Kinabalu - Sindumin	121.09	6.08	127.17	14.77	0.73	15.50
4	Kuala Penyu	502	Jalan Beaufort-Menumbok	45.88	9.46	55.34	5.50	1.14	6.64
TOTAL				431.17	105.31	536.48	52.11	13.70	65.81

R 02

**PENYENGGARAAN
BAHU JALAN
(SHOULDER)**

DISTRICT : PENAMPANG
ROUTE NO. : 500 JALAN KOTA KINABALU-KENINGAU-TENOM

LOCATION : (KM 14.3) LHS

R02 SHOULDER REPAIR

Film Batch No. 0661/8



BEFORE

Film Batch No. 0694/2



IN PROGRESS

Film Batch No: 0693/9



BEFORE

Film Batch No: 0694/1



IN PROGRESS

Film Batch No: 0694/8



AFTER

DISTRICT : PENAMPANG
ROUTE NO. : 500 JALAN KOTA KINABALU-KENINGAU-TENOM

LOCATION : (KM 14.3) LHS

R02 SHOULDER REPAIR

Film Batch No. 0694/3



IN PROGRESS

Film Batch No. 0694/4



AFTER

DISTRICT : PENAMPANG
ROUTE NO. : 500 JALAN KOTA KINABALU - KENINGAU - TENOM
R02 SHOULDER REPAIR

LOCATION : KM (11.5) LHS

Film Batch No: 0661/11



BEFORE

Film Batch No: 0693/16



IN PROGRESS

Film Batch No: 0694/9



AFTER

Film Batch No: 0661/4



BEFORE

Film Batch No: 0693/6



IN PROGRESS

Film Batch No: 0693/7



AFTER

R02 SHOULDER REPAIR

Film Batch No: 0661/5



BEFORE

Film Batch No: 0661/6



IN PROGRESS

Film Batch No: 0661/7



AFTER

DISTRICT : TAMBUNAN
ROUTE NO. : 500 JALAN KK-KGU-TENOM

LOCATION : KM85.000
(Refer to km post)

R02: SHOULDER



BEFORE



AFTER

LINTASAN RESOURCES SDN BHD (566483-H)
 PRIVATISATION OF WEST COAST SABAH FEDERAL ROADS MAINTENANCE

SUMMARY FOR R02 - SHOULDER REPAIR RECORD

ITEM	DISTRICT	ROUTE NO.	ROADNAME	EARTH SHOULDER AREA (m ²)	GRAVEL SHOULDER AREA (m ²)
1	Ranau	22	Jalan Kota Kinabalu - Sandakan	-	108.70
TOTAL				-	108.70

Checked & Certified Correct By :

Checked & Certified Correct By :

 For Lintasan Resources Sdn Bhd

 For Jabatan Kerja Raya

LINTASAN RESOURCES SDN BHD (566483-H)
 PRIVATISATION OF WEST COAST SABAH FEDERAL ROADS MAINTENANCE

SUMMARY FOR R02 - SHOULDER REPAIR RECORD

Ending Period : 29th February 2004

ITEM	DISTRICT	ROUTE NO.	ROADNAME	AREA (m ²) - Earth Shoulder		AREA (m ²) - Gravel Shoulder	
				PREVIOUS MONTH	CURRENT MONTH	PREVIOUS MONTH	CURRENT MONTH
1	Beaufort	01	Jalan Kota Kinabalu - Sindumin	24.50	0.00	55.40	3.84
2	Beaufort	502	Jalan Beaufort-Menumbok	175.00	0.00	19.42	35.30
3	Sipitang	01	Jalan Kota Kinabalu - Sindumin	0.00	0.00	33.85	0.00
4	Kuala Penyu	502	Jalan Beaufort-Menumbok	0.00	0.00	112.00	7.70
TOTAL				199.50	-	220.67	46.84
				199.50		220.67	46.84
							267.51

R 03

**PEMOTONGAN
RUMPUT
(GRASS CUTTING)**

DISTRICT : KOTA KINABALU
ROUTE NO. : 01 JALAN KOTA KINABALU - KUDAT

LOCATION : KM 30.720

R03 GRASS CUTTING

Film Batch No: 0656/4



BEFORE

Film Batch No: 0656/5



IN PROGRESS

Film Batch No: 0656/10



AFTER

R03 GRASS CUTTING

FILM BATCH NO: 0682/3



FILM BATCH NO: 0682/5



FILM BATCH NO: 0682/36



R03 GRASS CUTTING

Film Batch No: 0641/1



BEFORE

Film Batch No: 0641/2



IN PROGRESS

Film Batch No: 0641/6



AFTER

Film Batch No: 0643/1



BEFORE

Film Batch No: 0643/2



IN PROGRESS

Film Batch No: 0643/3



AFTER

R03 GRASS CUTTING

Film Batch No: 0643/4



BEFORE

Film Batch No: 0643/5



IN PROGRESS

Film Batch No: 0643/7



AFTER

DISTRICT : TAMBUNAN

ROUTE NO. : 500 JALAN KK-KGU-TENOM LOCATION (by Km post)

: Km84.250

R03: GRASS CUTTING

FILM BATCH NO:0792/6



BEFORE

FILM BATCH NO:0792/7



IN PROGRESS

FILM BATCH NO:0792/8



AFTER

DISTRICT : KENINGAU
ROUTE NO. : 500 JALAN KK-KGU-TENOM

LOCATION : KM144.600
(Refer to km post)

R03: GRASS CUTTING

FILM BATCH NO:1086/11



BEFORE

FILM BATCH NO:1086/12



AFTER

DISTRICT : TENOM

ROUTE NO. : 500 JALAN KK-KGU-TENOM LOCATION (by Km post)

: Km168.100

TREE BRANCHES DISPOSAL

FILM BATCH NO:4489/1



BEFORE

FILM BATCH NO:4489/3



IN PROGRESS

FILM BATCH NO:4489/4



AFTER

DISTRICT : SIPITANG
ROUTE NO. : 01 JALAN KOTA KINABALU-SINDUMIN

LOCATION : CH136.680(RHS)

R03 GRASS CUTTING

FILM BATCH NO:4148/17



BEFORE

FILM BATCH NO:4148/19



IN PROGRESS

FILM BATCH NO:4148/23



AFTER

R 04

**PENYENGGARAAN
PERABOT JALAN
(ROAD FURNITURE)**

R04 ROAD FURNITURES

FILM BATCH NO: 0682/12



FILM BATCH NO: 0682/13



FILM BATCH NO: 0682/14



R04 ROAD FURNITURES

Film Batch No: 0656/2



BEFORE

Film Batch No: 0656/3



IN PROGRESS

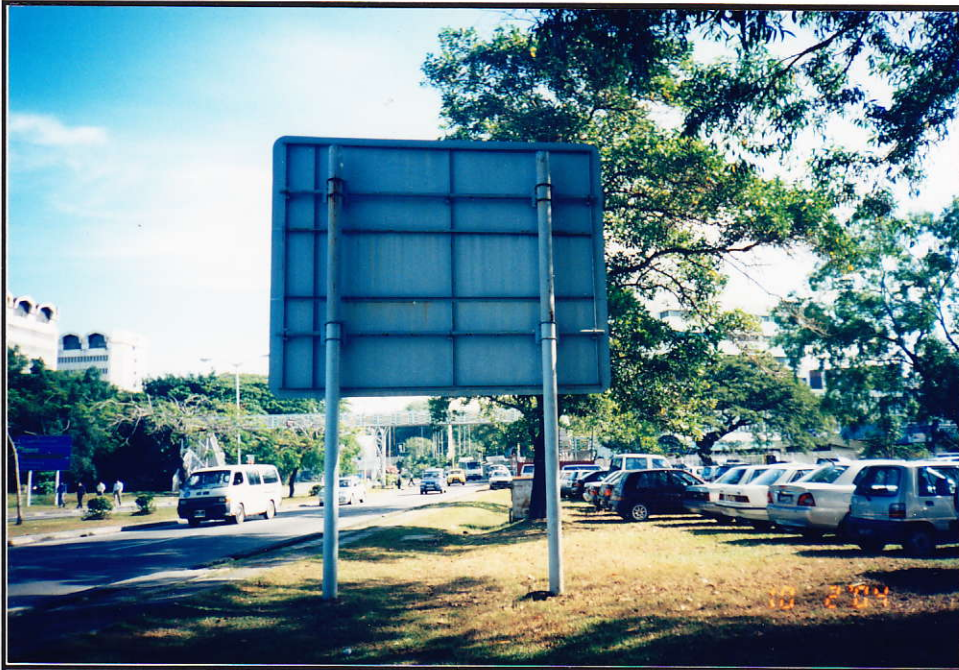
Film Batch No: 0664/2



AFTER

R04 ROAD FURNITURES

Film Batch No: 0656/11



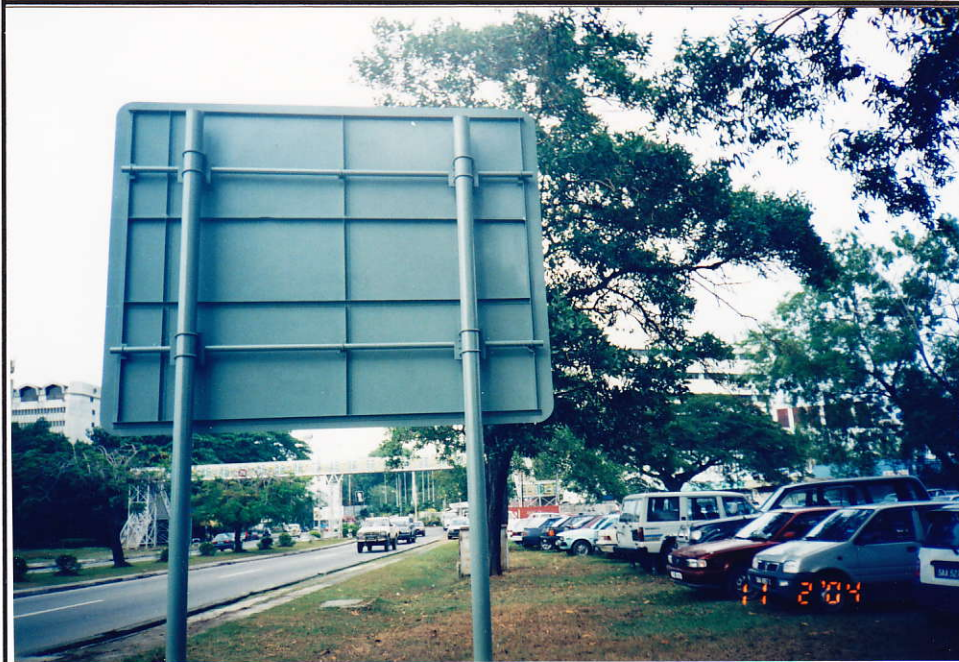
BEFORE

Film Batch No: 0656/12



IN PROGRESS

Film Batch No: 0664/4



AFTER

R04 ROAD FURNITURES

Film Batch No: 0656/6



BEFORE

Film Batch No: 0656/7



IN PROGRESS

Film Batch No: 0664/3



AFTER

R04 ROAD FURNITURE

Film Batch No: 0688/14



BEFORE

Film Batch No: 0688/15



IN PROGRESS

Film Batch No: 0688/20



AFTER

R04 ROAD FURNITURES

FILM BATCH NO: 0388/13



BEFORE

FILM BATCH NO: 0388/14



IN PROGRESS

FILM BATCH NO: 0388/15



AFTER

R04 ROAD FURNITURES

FILM BATCH NO: 0388/16



BEFORE

FILM BATCH NO: 0388/17



IN PROGRESS

FILM BATCH NO: 0388/18



AFTER

R 05

**PENYENGGARAAN
JAMBATAN & PEMBENTUNG
(BRIDGES & CULVERTS)**

DISTRICT : KUDAT
ROUTE NO. : 01 JALAN KOTA KINABALU-KUDAT

LOCATION : KM 148.910 RHS

R05 BRIDGES & CULVERT

FILM BATCH NO: 3537/22



FILM BATCH NO: 3608/9



AFTER

R05 CULVERTS

Film Batch No: 0616/3



BEFORE

Film Batch No: 0616/4



IN PROGRESS

Film Batch No: 0616/5



AFTER

R05 CULVERTS

Film Batch No: 0616/9



BEFORE

Film Batch No: 0616/10



IN PROGRESS

Film Batch No: 0616/11



AFTER

Film Batch No: 0648/25



BEFORE

Film Batch No: 0648/0



IN PROGRESS

Film Batch No: 0648/6



AFTER

R05 BRIDGES & CULVERT

FILM BATCH NO: 0143/33



BEFORE

FILM BATCH NO: 0463/13



IN PROGRESS

FILM BATCH NO: 0463/17



AFTER

FILM BATCH NO:4555/7



BEFORE

FILM BATCH NO:4555/8



IN PROGRESS

FILM BATCH NO:4555/10



AFTER

FILM BATCH NO:1815/2



BEFORE

FILM BATCH NO:1815/3



IN PROGRESS

FILM BATCH NO:1821/8



AFTER

FILM BATCH NO:4148/07



BEFORE

FILM BATCH NO:4148/12



IN PROGRESS

FILM BATCH NO:4148/09



AFTER

DISTRICT
ROUTE NO.

: SIPITANG
: 01 JALAN KOTA KINABALU-SINDUMIN

LOCATION : CH153.984(LHS)

R05 BRIDGES & CULVERTS

FILM BATCH NO:4148/05



BEFORE

FILM BATCH NO:4148/08



IN PROGRESS

FILM BATCH NO:4148/14



AFTER

R05 BRIDGES & CULVERTS

FILM BATCH NO:4144/14



BEFORE

FILM BATCH NO:4144/15



IN PROGRESS

FILM BATCH NO:4190/10



AFTER

R 07

**PENYENGGARAAN
LONGKANG
(DRAINAGE)**

R07 DRAINAGE

Film Batch No: 0641/3



BEFORE

Film Batch No: 0641/4



IN PROGRESS

Film Batch No: 0656/8



AFTER

Film Batch No: 0563/10



BEFORE

Film Batch No: 0563/11



IN PROGRESS

Film Batch No: 0599/1



AFTER

R07 DRAINAGE

Film Batch No: 0639/11



BEFORE

Film Batch No: 0639/12



IN PROGRESS

Film Batch No: 0639/9



AFTER

R07 DRAINAGE

Film Batch No: 0688/12



BEFORE

Film Batch No: 0688/13



IN PROGRESS

Film Batch No: 0688/19



AFTER

R07 DRAINAGE

Film Batch No : 0688/1



BEFORE

Film Batch No : 0688/2



IN PROGRESS

Film Batch No : 0688/3



AFTER

R07 DRAINAGE

FILM BATCH NO: 0143/30



BEFORE

FILM BATCH NO: 0281/6



IN PROGRESS

FILM BATCH NO: 0463/18



AFTER

FILM BATCH NO: 0282/19



BEFORE

FILM BATCH NO: 0282/21



IN PROGRESS

FILM BATCH NO: 0282/23



AFTER

DISTRICT : TAMBUNAN

ROUTE NO. : 500 JALAN KK-KGU-TENOM LOCATION (by Km post)

: Km62.100

R07: DRAINAGE

FILM BATCH NO:1821/10



BEFORE

FILM BATCH NO:1821/2



IN PROGRESS

FILM BATCH NO:1821/4



AFTER

FILM BATCH NO:1815/10



BEFORE

FILM BATCH NO:1821/6



IN PROGRESS

FILM BATCH NO:1821/10



AFTER

R07 DRAINAGE

FILM BATCH NO:4091/13



BEFORE

FILM BATCH NO:4091/14



IN PROGRESS

FILM BATCH NO:4144/05



AFTER

FILM BATCH NO:4091/03



BEFORE

FILM BATCH NO:4091/04



IN PROGRESS

FILM BATCH NO:4144/06



AFTER

B

**PEMERIKSAAN
RUTIN
(INSPECTION)**

DISTRICT : KUDAT
ROUTE NO. : 01 JALAN KOTA KINABALU-KUDAT

LOCATION : KM174.352

CARCASSES

FILM BATCH NO: 0682/11



DISTRICT : BEAUFORT

ROUTE NO. : 502 JALAN BEAUFORT - MENUMBOK

LOCATION : CH11.860

ROUTINE INSPECTION

FILM BATCH NO:4091/19



BEFORE

FILM BATCH NO:4091/20



AFTER

DISTRICT : KUALA PENYU

ROUTE NO. : 502 JALAN BEAUFORT - MENUMBOK

LOCATION : CH49.680

ROUTINE INSPECTION

FILM BATCH NO: 4144/11



BEFORE

FILM BATCH NO: 4144/12



AFTER