

**PENSWASTAAN PENYENGGARAAN  
JALAN-JALAN PERSEKUTUAN DI SABAH  
(PANTAI BARAT & PENDALAMAN)**



**THE GOVERNMENT OF MALAYSIA**

**LAPORAN KEMAJUAN BULANAN  
No. 5**

**JANUARI 2004**



*Jabatan Kerja Raya, Negeri Sabah*

*Kontraktor : Lintasan Resources Sdn. Bhd. 566483-H*

# **LINTASAN RESOURCES SDN. BHD.**

PENSWASTAAN PENYENGGARAAN JALAN-JALAN  
PERSEKUTUAN DI SABAH (PANTAI BARAT & PENDALAMAN)

---

## **LAPORAN KEMAJUAN BULANAN DISEMBER 2003**

---

### **ISI KANDUNGAN**

**Bil:**            **PERKARA**

1.            Laporan Eksekutif Projek
2.            Carta Organisasi Syarikat
3.            Lokasi Jalan Persekutuan
4.            Ringkasan Laporan Kemajuan Bulanan
5.            R 01 - Penyenggaraan Permukaan Jalan
6.            R 02 - Penyenggaraan Bahu Jalan
7.            R 03 - Pemetongan Rumput
8.            R 04 - Penyenggaraan Perabot Jalan
9.            R 05 - Penyenggaraan Jambatan dan Pembentung
10.          R 07 - Penyenggaraan Longkang
11.          B    - Pemeriksaan Rutin
12.          Kerja-Kerja Kecemasan
13.          Kerja-Kerja Berkala
14.          Rekod Aduan

**LAPORAN  
EKSEKUTIF PROJEK**

## LAPORAN EKSEKUTIF PROJEK

---

<b>TAJUK KONTRAK :</b>	PENSWASTAAN PENYENGGARAAN JALAN-JALAN PERSEKUTUAN DI SABAH (PANTAI BARAT & PENDALAMAN)
<b>KLIEN :</b>	JABATAN KERJA RAYA, SABAH
<b>SYARIKAT :</b>	LINTASAN RESOURCES SDN. BHD. Lot 1, Block A, Ground Floor, Wisma TP Mile 1 ½, Tuaran Road 88400 Kota Kinabalu, Sabah, Malaysia.
<b>TEMPOH :</b>	15 TAHUN
<b>TARIKH MULA :</b>	01hb September 2003
<b>TARIKH TAMAT :</b>	31hb August 2018
<b>KAWASAN :</b>	PANTAI BARAT & PENDALAMAN
<b>JALAN TERLIBAT :</b>	Semua Jalan-Jalan Persekutuan Yang Diwartakan Dibawah Akta Jalan Persekutuan 1959
<b>PANJANG JALAN :</b>	764.85 Kilometer
<b>KATOGORI JALAN :</b>	a) Jalan Protocol b) Jalan Utama c) Jalan Sekunder
<b>SKOP KERJA :</b>	a) Penyenggaraan Rutin b) Kerja-Kerja Kecemasan

### RINGKASAN LAPORAN :

Like it or not, the wet Monsoon and the festivities at this period of the year do affect our normal work schedule somewhat. Though we have not experienced flooding of the magnitude happened in the East Coast of Sabah, nevertheless, the road infrastructures within our concession areas do suffer damages as a result of exceptional inclement weather - road subsidence and landslide occurred in Ranau and Telupid areas; bridges and culverts in Kota Marudu and Kota Belud districts suffered from severe scouring and collapse.

#### ROUTINE MAINTENANCE

Rain or shine, the seven routine maintenance work activities go on. We are constantly on the look out for improvement. Initially, there used to be a time gap between grass-cutting and the disposal of the cut grass. Our present practice is that the cut grass is immediately gathered into bags for disposal. Similarly, with drain-clearing and culvert-cleaning, every attempt is made to cart away the debris without having to leave them on site overnight.

Pothole-patching and shoulder repair continue to be our most challenging tasks especially during the wet seasons. Our labour strength has been increased to cope with the increasing work load on pothole-patching brought about by the wet weather. On the whole, our pothole-patching has been of a high quality. Thus far, potholes that we patched do not require rectification. Notwithstanding, we are still evaluating the various equipment and facilities in the market that would reduce the time it takes for the preparation of hot asphalt concrete, for their transportation to site and for the actual patching process especially in remote areas where fresh supply of hot mix is not readily available.

The scope of work for Shoulder Maintenance calls for re-grading and topping up of shoulders with suitable earth filling material. High shoulders which impede the free passage of surface water should be graded down. Such grading, however, should be followed by the placement of hard shoulder material without which ugly puddles of water on the shoulders would quickly result through indiscreet parking. We hope Government can set aside funds for shoulder rehabilitation with hard shoulder material in the suburban areas where indiscreet parking is most rampant.

#### PERIODIC PROGRAMME & MAINTENANCE

In view of funding constraint, the original Proposed Periodic Programme for 2004 of RM164 million has been trimmed down to RM20 million. Approval is being awaited.

Since the inception of the Concession, no Periodic Works has been approved.

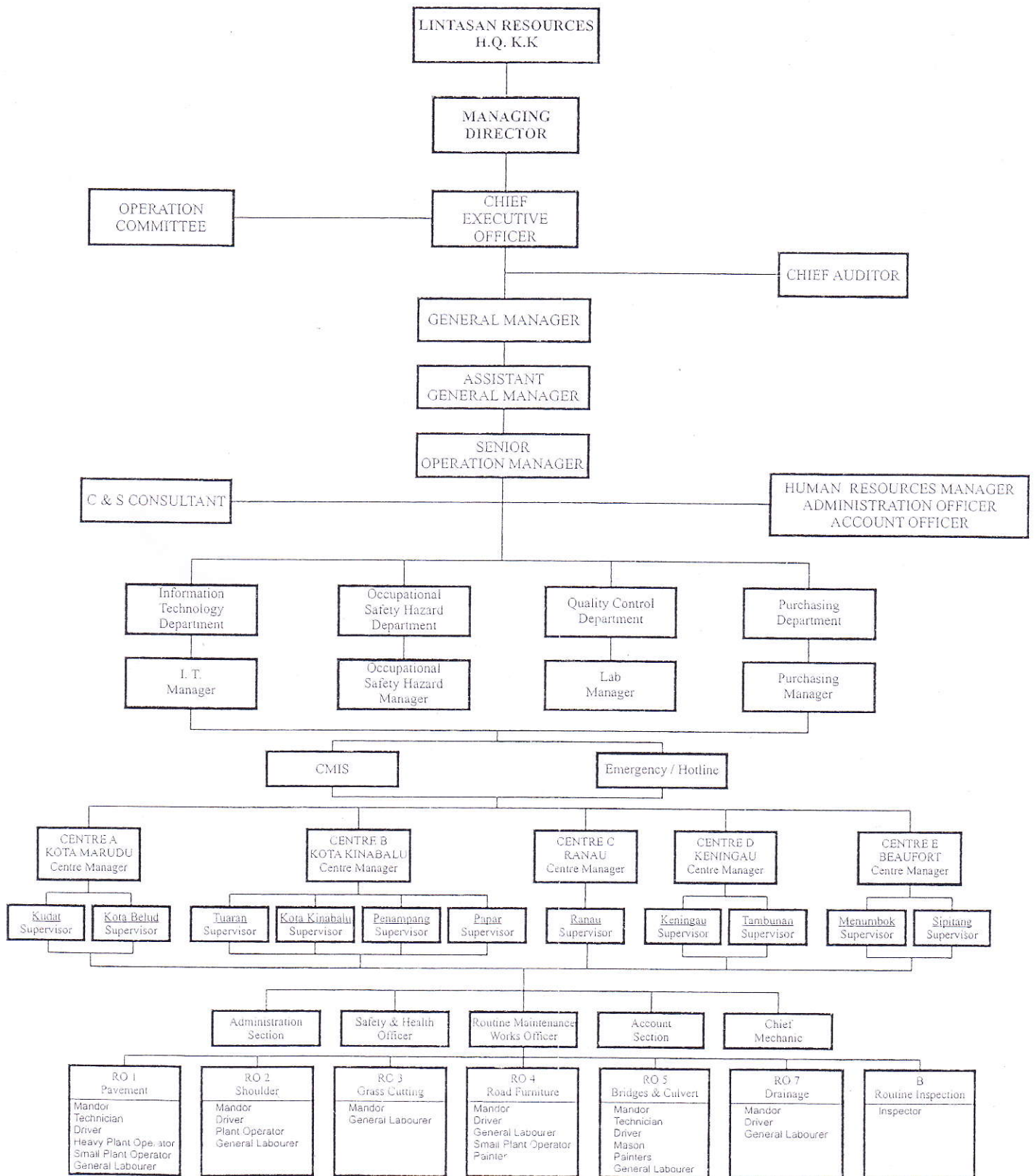
#### EMERGENCY WORK

Clearing of fallen trees is a continuous activity. Light gravelling of the cracked and subsided areas at KM136 and KM164 Jalan Kota Kinabalu-Sandakan near Telupid to ease traffic flow was carried out. Other emergency works carried out were at the approaches to the failed Sg. Bintasan Bridge and the erection of a 150-ft Bailey bridge to restore road communication as a temporary measure across Sg. Bintasan, Langkon, Kota Marudu.

**CARTA  
ORGANISASI SYARIKAT**

# LINTASAN RESOURCES SDN. BHD.

## ORGANISATION CHART FOR SABAH FEDERAL ROAD MAINTENANCE



**LOKASI**  
**JALAN PERSEKUTUAN**  
**DI**  
**SABAH**  
(PANTAI BARAT & PENDALAMAN)

**RINGKASAN  
LAPORAN KEMAJUAN  
BULANAN**

**KERJA-KERJA RUTIN**  
(ROUTINE MAINTENANCE)

**R 01**

**PENYENGGARAAN  
PERMUKAAN JALAN  
(POTHOLE PATCHING)**

**R01 POTHOLE PATCHING**

FILM BATCH NO: B 04/6



FILM BATCH NO: B 04/8



FILM BATCH NO: B 04/9



**R01 POTHOLE PATCHING**

FILM BATCH NO.:3783/12



**BEFORE**

FILM BATCH NO.:3783/00



**IN PROGRESS**

FILM BATCH NO.:3896/02



**AFTER**

**R01 POTHOLE PATCHING**

FILM BATCH NO: B 04/7



FILM BATCH NO: B 04/7



FILM BATCH NO: B 04/8



**LINTASAN RESOURCES SDN BHD** (566483-H)  
 PRIVATISATION OF WEST COAST SABAH FEDERAL ROADS MAINTENANCE

**SUMMARY FOR R01 - POTHOLE PATCHING RECORD**

Ending Period : 31 January 2004

ITEM	DISTRICT	ROUTE NO.	ROADNAME	AREA ( m <sup>2</sup> )		PREMIX QUANTITY ( TON )			
				PREVIOUS MONTH	CURRENT MONTH	CUM. MONTH	PREVIOUS MONTH	CURRENT MONTH	CUM. MONTH
1	KOTA BELUD	01	Jalan Kota Kinabalu - Kudat	375.36	111.69	487.05	45.52	13.48	59.00
2	KOTA MARUDU	01	Jalan Kota Kinabalu - Kudat	29.53	12.03	41.56	3.56	1.46	5.02
3	KUDAT	01	Jalan Kota Kinabalu - Kudat	45.35	14.68	60.03	5.45	1.77	7.22
<b>TOTAL</b>				<b>450.24</b>	<b>138.40</b>	<b>588.64</b>	<b>54.53</b>	<b>16.71</b>	<b>71.24</b>

R01 PAVEMENT

Film Batch No: 0582/3



BEFORE

Film Batch No: 0582/4



IN PROGRESS

Film Batch No: 0582/5



AFTER

R01 PAVEMENT

Film Batch No: 0582/10



BEFORE

Film Batch No: 0582/11



IN PROGRESS

Film Batch No: 0582/12



AFTER

R01 PAVEMENT

Film Batch No: 0582/7



BEFORE

Film Batch No: 0582/8



IN PROGRESS

Film Batch No: 0582/9



AFTER

R01 PAVEMENT

Film Batch No: 0612/12



BEFORE

Film Batch No: 0612/13



IN PROGRESS

Film Batch No: 0612/14



AFTER

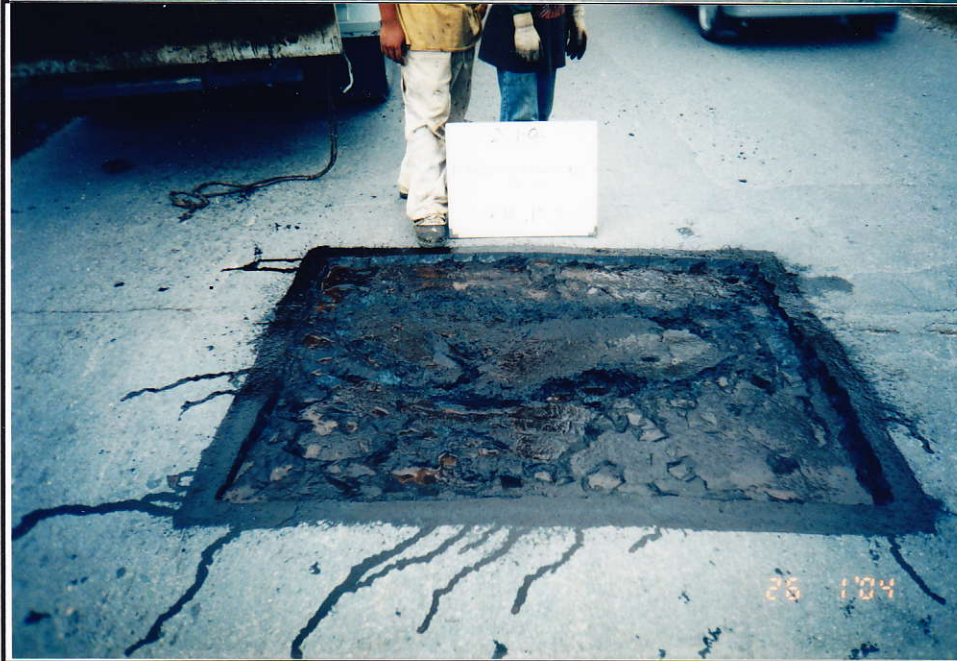
R01 PAVEMENT

Film Batch No: 0612/15



BEFORE

Film Batch No: 0612/16



IN PROGRESS

Film Batch No: 0612/17



AFTER

**LINTASAN RESOURCES SDN BHD** (566483-H)  
**PRIVATISATION OF WEST COAST SABAH FEDERAL ROADS MAINTENANCE**

SUMMARY FOR R01 - POTHoles PATCHING RECORD

Ending Period : 31st January 2004

ITEM	DISTRICT	ROUTE NO.	ROADNAME	AREA ( m <sup>2</sup> )			PREMIX QUANTITY ( TON )		
				PREVIOUS MONTH	CURRENT MONTH	CUM. MONTH	PREVIOUS MONTH	CURRENT MONTH	CUM. MONTH
1	Kota Kinabalu	01	Jalan Kota Kinabalu - Kudat	1043.94	987.11 ✓	2031.05	182.01	137.91 ✓	319.92
2	Kota Kinabalu	01	Jalan Kota Kinabalu - Sindumin	44.24	-	44.24	7.87	-	7.87
3	Kota Kinabalu	606	Jalan Susur Sepangar Bay	33.41	-	33.41	4.93	-	4.93
4	Kota Kinabalu	607	Jalan masuk ke Pelabuhan Baru, K.K.	5.72	7.92 ✓	13.64	0.76	1.22 ✓	1.98
5	Kota Kinabalu	608	Jalan masuk ke Lapangan Terbang Lama, K.K.	10.79	-	10.79	1.49	-	1.49
6	Penampang	500	Jalan Kota Kinabalu - Keningau - Tenom	278.18	314.65	592.83	41.20	44.42 ✓	85.62
7	Penampang	501	Jalan Kota Kinabalu - Penampang - Lok Kawi	188.00	51.52	239.52	29.38	6.97	36.35
8	Papar	01	Jalan Kota Kinabalu - Sindumin	737.99	194.89	932.88	105.46	30.86	136.32
9	Tuaran	01	Jalan Kota Kinabalu - Kudat	58.25	415.11 ✓	473.36	50.05	57.11 ✓	107.16
10	Tuaran	503	Jalan Berungis - Kota Belud	49.20	7.55 ✓	56.75	8.59	0.89 ✓	9.48
11	Tuaran	22	Jalan Kota Kinabalu - Sandakan	263.72	-	263.72	41.51	-	41.51
<b>TOTAL</b>				<b>2,713.44</b>	<b>1,978.75</b>	<b>4,692.19</b>	<b>473.25</b>	<b>279.38</b>	<b>752.63</b>

**LINTASAN RESOURCES SDN BHD** (566483-H)  
 PRIVATISATION OF WEST COAST SABAH FEDERAL ROADS MAINTENANCE

SUMMARY FOR R01 - POTHOLES PATCHING RECORD

*Ending Period : 31<sup>st</sup> January 2004*

ITEM	DISTRICT	ROUTE NO.	ROADNAME	AREA ( m <sup>2</sup> )		PREMIX QUANTITY ( TON )		
				PREVIOUS MONTH	CURRENT MONTH	PREVIOUS MONTH	CURRENT MONTH	CUM. MONTH
1	Tambunan	500	Jalan Kota Kinabalu - Keningau - Tenom	151.33	76.68	19.55	9.57	29.12
2	Keningau	500	Jalan Kota Kinabalu - Keningau - Tenom	7.43	4.29	1.03	0.51	1.54
3	Tenom	500	Jalan Kota Kinabalu - Keningau - Tenom	19.07	3.70	2.47	0.45	2.92
<b>TOTAL</b>				<b>177.83</b>	<b>84.67</b>	<b>23.05</b>	<b>10.53</b>	<b>33.58</b>

### R01 POTHOLE PATCHING

FILM BATCH NO:6923/22



BEFORE

FILM BATCH NO:6923/23



IN PROGRESS

FILM BATCH NO:7411/31



AFTER

**LINTASAN RESOURCES SDN BHD** (566483-H)  
 PRIVATISATION OF WEST COAST SABAH FEDERAL ROADS MAINTENANCE

**SUMMARY FOR R01 - POTHOLE PATCHING RECORD**

*Ending Period : 31st January 2004*

ITEM	DISTRICT	ROUTE NO.	ROADNAME	AREA ( m <sup>2</sup> )		PREMIX QUANTITY ( TON )		
				PREVIOUS MONTH	CURRENT MONTH	PREVIOUS MONTH	CURRENT MONTH	CUM. MONTH
1	Beaufort	01	Jalan Kota Kinabalu - Sindumin	129.32	20.57	15.64	2.46	18.10
2	Beaufort	502	Jalan Beaufort-Menumbok	56.35	57.96	6.79	6.95	13.74
3	Sipitang	01	Jalan Kota Kinabalu - Sindumin	108.41	12.68	13.00	1.77	14.77
4	Kuala Penyu	502	Jalan Beaufort-Menumbok	45.88	0.00	5.50	0.00	5.50
<b>TOTAL</b>				<b>339.96</b>	<b>91.21</b>	<b>40.93</b>	<b>11.18</b>	<b>52.11</b>

DISTRICT : BEAUFORT  
ROUTE NO. : 01 JALAN KOTA KINABALU-SINDUMIN LOCATION : KM108.380 (LHS)

**R01 POTHOLE PATCHING**



**BEFORE**



**AFTER**

**R 02**

**PENYENGGARAAN  
BAHU JALAN  
(SHOULDER)**

**R02 SHOULDER REPAIR**

Film Batch No: 0514/11



**BEFORE**

Film Batch No: 0514/12



**IN PROGRESS**

Film Batch No: 0564/8



**AFTER**

FILM BATCH NO:4598/6



BEFORE

FILM BATCH NO:44598/8



IN PROGRESS

FILM BATCH NO:44598/9



AFTER

**LINTASAN RESOURCES SDN BHD** (566483-H)  
PRIVATISATION OF WEST COAST SABAH FEDERAL ROADS MAINTENANCE

**SUMMARY FOR R02 - SHOULDER REPAIR RECORD**

ITEM	DISTRICT	ROUTE NO.	ROADNAME	EARTH SHOULDER AREA (m <sup>2</sup> )	GRAVEL SHOULDER AREA (m <sup>2</sup> )
1	Ranau	22	Jalan Kota Kinabalu - Sandakan	-	163.40
<b>TOTAL</b>				-	<b>163.40</b>

Checked & Certified Correct By :

Checked & Certified Correct By :

\_\_\_\_\_  
For Lintasan Resources Sdn Bhd

\_\_\_\_\_  
For Jabatan Kerja Raya

**R02 ROAD SHOULDER**

FILM BATCH NO:3921/09



**BEFORE**

FILM BATCH NO:3921/10



**IN PROGRESS**

FILM BATCH NO:3921/11



**AFTER**

**R02 SHOULDER**

FILM BATCH NO: 3697/13



**BEFORE**

FILM BATCH NO: 3697/14



**IN PROGRESS**

FILM BATCH NO: 3697/19



**AFTER**

**LINTASAN RESOURCES SDN BHD** (566483-H)  
 PRIVATISATION OF WEST COAST SABAH FEDERAL ROADS MAINTENANCE

SUMMARY FOR R02 - SHOULDER REPAIR RECORD

Ending Period : 31st January 2004

ITEM	DISTRICT	ROUTE NO.	ROADNAME	AREA ( m <sup>2</sup> ) - Earth Shoulder		AREA ( m <sup>2</sup> ) - Gravel Shoulder	
				PREVIOUS MONTH	CURRENT MONTH	PREVIOUS MONTH	CURRENT MONTH
1	Beaufort	01	Jalan Kota Kinabalu - Sindumin	24.50	0.00	55.40	0.00
2	Beaufort	502	Jalan Beaufort-Menumbok	175.00	0.00	0.00	19.42
3	Sipitang	01	Jalan Kota Kinabalu - Sindumin	0.00	0.00	33.85	0.00
4	Kuala Penyu	502	Jalan Beaufort-Menumbok	0.00	0.00	112.00	0.00
<b>TOTAL</b>				<b>199.50</b>	<b>-</b>	<b>201.25</b>	<b>19.42</b>
							<b>220.67</b>

**R 03**

**PEMOTONGAN  
RUMPUT  
(GRASS CUTTING)**

DISTRICT : KUDAT  
ROUTE NO. : 01 JALAN KOTA KINABALU-KUDAT LOCATION : KM175.832 RHS

**R03 GRASS CUTTING**

FILM BATCH NO: B 04/20



FILM BATCH NO: B 04/20



**R03 GRASS CUTTING**

Film Batch No: 0600/24



BEFORE

Film Batch No: 0600/24A



IN PROGRESS

Film Batch No: 0602/1



AFTER

**R03 GRASS CUTTING**

Film Batch No: 0614/00



**BEFORE**

Film Batch No: 0614/0



**IN PROGRESS**

Film Batch No: 0614/5



**AFTER**

DISTRICT : PENAMPANG

ROUTE NO. : 500 JALAN KOTA KINABALU - KENINGAU - TENOM

LOCATION : KM (10.3)

R03 GRASS CUTTING

Film Batch No: 0557/1



BEFORE

Film Batch No: 0557/2



Film Batch No: 0557/3



**R03 GRASS CUTTING**

Film Batch No: 0557/8



**BEFORE**

Film Batch No: 0557/9



**IN PROGRESS**

Film Batch No:



**AFTER**

DISTRICT : TAMBUNAN

ROUTE NO. : 500 JALAN KK-KGU-TENOM LOCATION (by Km post)

: Km72.300

R03: GRASS CUTTING

FILM BATCH NO:4392/1



BEFORE

FILM BATCH NO:4392/2



IN PROGRESS

FILM BATCH NO:4392/3



AFTER

FILM BATCH NO:4424/2



BEFORE

FILM BATCH NO:4424/3



IN PROGRESS

FILM BATCH NO:4423/9



AFTER

DISTRICT : KENINGAU  
ROUTE NO. : 500 JALAN KK-KGU-TENOM

LOCATION : KM135.700  
(Refer to km post)

**RO3: GRASS CUTTING**



**BEFORE**



**AFTER**

DISTRICT : TENOM  
ROUTE NO. : 500 JALAN KK-KGU-TENOM

LOCATION : KM156.200  
(Refer to km post)

**RO3: GRASS CUTTING**

FILM BATCH NO:4366/1



**BEFORE**

FILM BATCH NO:4366/2



**AFTER**

FILM BATCH NO: 3697/02



BEFORE

FILM BATCH NO: 3697/03



IN PROGRESS

FILM BATCH NO: 3697/18



AFTER

**R 04**

**PENYENGGARAAN  
PERABOT JALAN  
(ROAD FURNITURE)**

DISTRICT : KOTA BELUD  
ROUTE NO. : 01 JALAN KOTA KINABALU-KUDAT

LOCATION : KM101.30

### R04 ROAD FURNITURES

FILM BATCH NO: 3266/25



FILM BATCH NO: 3266/26



FILM BATCH NO: 3266/27



**R04 ROAD FURNITURE**

Film Batch No: 0593/23



**BEFORE**

Film Batch No: 0593/24



**IN PROGRESS**

Film Batch No: 0593/25



**AFTER**

**R04 ROAD FURNITURES**

Film Batch No: 0536/23



BEFORE

Film Batch No: 0536/24



IN PROGRESS

Film Batch No: 0536/25



AFTER

R04 ROAD FURNITURES

Film Batch No: 0544/18



BEFORE

Film Batch No: 0544/19



IN PROGRESS

Film Batch No: 0544/20



AFTER

R04 ROAD FURNITURES

Film Batch No: 0544/14



BEFORE

Film Batch No: 0544/13



IN PROGRESS

Film Batch No: 0544/12



AFTER

DISTRICT : KENINGAU

ROUTE NO. : 500 JALAN KK-KGU-TENOM LOCATION (by Km Post)

: Km148.000

R04: ROAD FURNITURE

FILM BATCH NO : 138/3



BEFORE

FILM BATCH NO : 138/4



IN PROGRESS

FILM BATCH NO : 138/6



AFTER

### R04 ROAD FURNITURES

FILM BATCH NO: 7194/28



BEFORE

FILM BATCH NO: 7124/29



IN PROGRESS

FILM BATCH NO: 7124/30



AFTER

**R04 ROAD FURNITURES**

FILM BATCH NO: 7194/22



BEFORE

FILM BATCH NO: 7124/23



IN PROGRESS

FILM BATCH NO: 7124/24



AFTER

**R04 ROAD FURNITURES**

FILM BATCH NO:3906/13



BEFORE

FILM BATCH NO:3906/14



IN PROGRESS

FILM BATCH NO:3906/15



AFTER

**R04 ROAD FURNITURES**

FILM BATCH NO:3778/05



BEFORE

FILM BATCH NO:3778/06



IN PROGRESS

FILM BATCH NO:3778/07



AFTER

**R 05**

**PENYENGGARAAN  
JAMBATAN & PEMBENTUNG  
(BRIDGES & CULVERTS)**

DISTRICT : KOTA BELUD

ROUTE NO. : 01 JALAN KOTA KINABALU-KUDAT

LOCATION : KM 68.300

### R05 BRIDGES & CULVERT

FILM BATCH NO: 2804/25



BEFORE

FILM BATCH NO: 2804/27



AFTER

DISTRICT : KOTA BELUD

ROUTE NO. : 01 JALAN KOTA KINABALU-KUDAT

LOCATION : KM 110.930

**R05 BRIDGES & CULVERT**

FILM BATCH NO: 2806/3



**BEFORE**

FILM BATCH NO: 2806/12



**AFTER**

R05 BRIDGES

Film Batch No: 0600/18



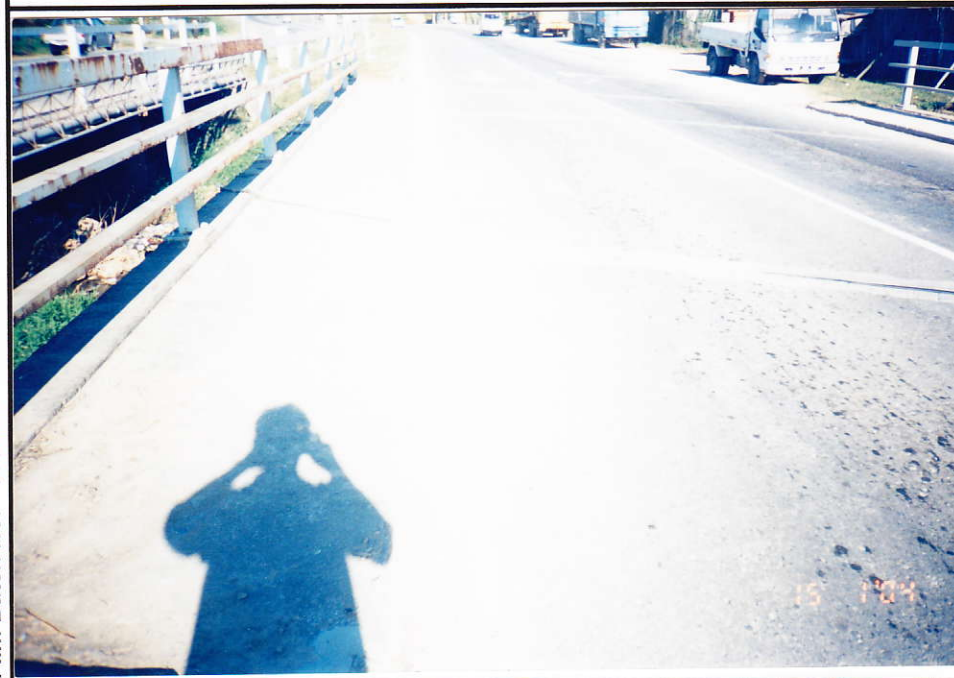
BEFORE

Film Batch No: 0600/19



IN PROGRESS

Film Batch No: 0600/23



AFTER

Film Batch No: 0594/11



BEFORE

Film Batch No: 0594/23



IN PROGRESS

Film Batch No: 0594/12



AFTER

**R 07**

**PENYENGGARAAN  
LONGKANG  
(DRAINAGE)**

**R07 DRAINAGE**

FILM BATCH NO: 330/29



FILM BATCH NO: 3309/30



FILM BATCH NO: 3309/35



Film Batch No: 0559/1



BEFORE

Film Batch No: 0559/2



IN PROGRESS

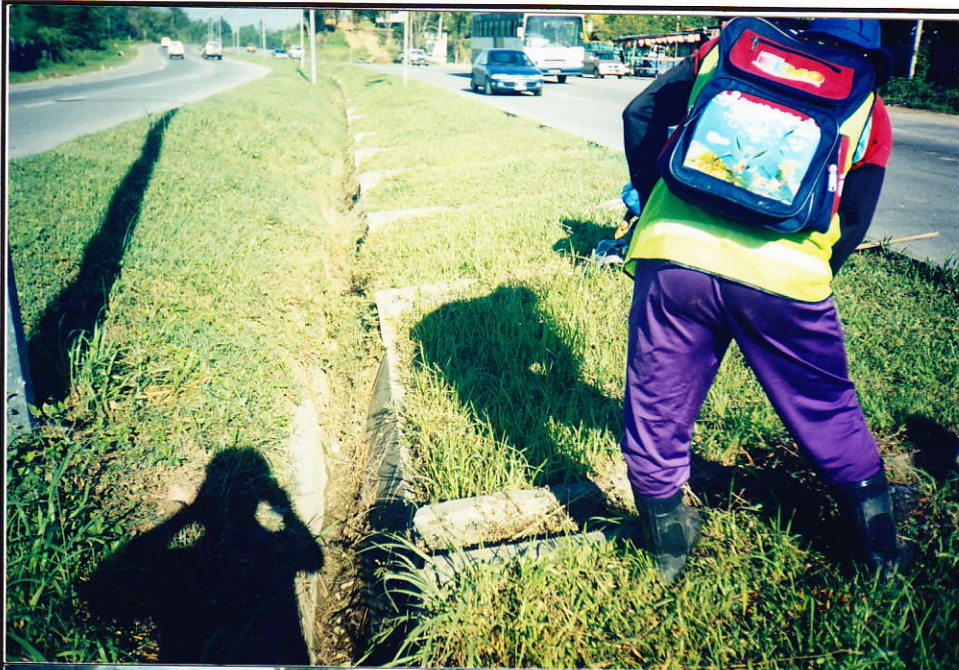
Film Batch No: 0559/3



AFTER

R07 DRAINAGE

Film Batch No: 0559/4



BEFORE

Film Batch No: 0559/5



IN PROGRESS

Film Batch No: 0593/7



AFTER

Film Batch No: 0543/1



BEFORE

Film Batch No: 0543/2



IN PROGRESS

Film Batch No: 0543/8



AFTER

**R07 DRAINAGE**

Film Batch No: 0543/11



**BEFORE**

Film Batch No: 0543/12



**IN PROGRESS**

Film Batch No: 0543/13



**AFTER**

**R07 DRAINAGE**

Film Batch No: 0543/00



**BEFORE**

Film Batch No: 0543/0



**IN PROGRESS**

Film Batch No: 0543/9



**AFTER**

**R07 DRAINAGE**

Film Batch No: 0564/1



**BEFORE**

Film Batch No: 0564/2



**IN PROGRESS**

Film Batch No: 0564/4



**AFTER**

**R07 DRAINAGE**

Film Batch No: 0564/10



**BEFORE**

Film Batch No: 0564/11



**IN PROGRESS**

Film Batch No: 0564/13



**AFTER**

**R07 DRAINAGE**

Film Batch No: 0523/4



**BEFORE**

Film Batch No: 0523/3



**IN PROGRESS**

Film Batch No: 0523/2



**AFTER**

TAMBUNAN : KENINGAU  
ROUTE NO. : 500 JALAN KK-KGU-TENOM

LOCATION : KM73.650  
(Refer to km post)

**R07: DRAINAGE**

FILM BATCH NO:4392/11



**BEFORE**

FILM BATCH NO:4392/11



**AFTER**

DISTRICT : TAMBUNAN

ROUTE NO. : 500 JALAN KK-KGU-TENOM LOCATION (by Km post)

: Km76.200

R07: DRAINAGE

FILM BATCH NO:4392/8



BEFORE

FILM BATCH NO:4392/9



IN PROGRESS

FILM BATCH NO:4424/4



AFTER

DISTRICT : KENINGAU  
ROUTE NO. : 500 JALAN KK-KGU-TENOM

LOCATION : KM122.900  
(Refer to km post)

**RO7: DRAINAGE**

FILM BATCH NO:4366/8



**BEFORE**

FILM BATCH NO:4366/12



**AFTER**

**R07 DRAINANGE**

FILM BATCH NO: 7162/1



**BEFORE**

FILM BATCH NO: 7454/27



**AFTER**

**R07 DRAINAGE**

FILM BATCH NO:3697/11



**BEFORE**

FILM BATCH NO:3697/12



**IN PROGRESS**

FILM BATCH NO:3697/20



**AFTER**

**B**

**PEMERIKSAAN  
RUTIN  
(INSPECTION)**

FILM BATCH NO: A/23



FILM BATCH NO: B 04/14



FILM BATCH NO: B 04/10



DISTRICT : BEAUFORT  
ROUTE NO. : 01 JALAN KOTA KINABALU-SINDUMIN LOCATION : KM80.371

**(B) ROUTINE INSPECTION**



**BEFORE**



**AFTER**

**ROUTINE INSPECTION**

FILM BATCH NO:3761/22



**BEFORE**

FILM BATCH NO:3761/23



**IN PROGRESS**

FILM BATCH NO:3761/24



**AFTER**

DISTRICT : BEAUFORT  
ROUTE NO. : 01 JALAN KOTA KINABALU-SINDUMIN LOCATION : KM107.930

**(B) ROUTINE INSPECTION**

FILM BATCH NO.:3906/11



**BEFORE**

FILM BATCH NO.:3906/12



**AFTER**