

**PENSWASTAAN PENYENGGARAAN
JALAN-JALAN PERSEKUTUAN DI SABAH
(PANTAI BARAT & PENDALAMAN)**



THE GOVERNMENT OF MALAYSIA

**LAPORAN KEMAJUAN BULANAN
No. 4**

DISEMBER 2003



Jabatan Kerja Raya, Negeri Sabah

Kontraktor : Lintasan Resources Sdn. Bhd. 566483-H

LINTASAN RESOURCES SDN. BHD.

PENSWASTAAN PENYENGGARAAN JALAN-JALAN
PERSEKUTUAN DI SABAH (PANTAI BARAT & PENDALAMAN)

LAPORAN KEMAJUAN BULANAN DISEMBER 2003

ISI KANDUNGAN

<u>Bil:</u>	<u>PERKARA</u>
1.	Laporan Eksekutif Projek
2.	Carta Organisasi Syarikat
3.	Lokasi Jalan Persekutuan
4.	Ringkasan Laporan Kemajuan Bulanan
5.	R 01 - Penyenggaraan Permukaan Jalan
6.	R 02 - Penyenggaraan Bahu Jalan
7.	R 03 - Pemotongan Rumput
8.	R 04 - Penyenggaraan Perabot Jalan
9.	R 05 - Penyenggaraan Jambatan dan Pembentung
10.	R 07 - Penyenggaraan Longkang
11.	B - Pemeriksaan Rutin
12.	Kerja-Kerja Kecemasan
13.	Kerja-Kerja Berkala
14.	Rekod Aduan

LAPORAN EKSEKUTIF PROJEK

TAJUK KONTRAK PENYAWATAN/PEMERTINGKARAN JALAN-JALAN PERSEKUTUAN DI DASAR PANTAI NEGEAT & TENDALAMAR

KLIEN JAMATAN PERUSAHAAN & NEGARA

SYARISAT LITSIAN WONGJINEN SUN EMD
Lot 1, Block A, Jln. Pagar
Klang JP
52001 Kuala Lumpur, 50001, Malaysia

TEMPOR 12 BULAN

TARIKH MULA 01/08/2004

TARIKH TAMAT 31/07/2005

KAWASAN SUNGAI BUNGLAMAN

JALAN PERSEKUTUAN JALAN PERSEKUTUAN

LAPORAN EKSEKUTIF PROJEK

PANGKALAN 10/10/2004

KATEGORI JALAN
01 Jalan Persekutuan
02 Jalan Utama
03 Jalan Sekunder

KELOMPOK
01 Penyelenggara Kerja
02 Penyelenggara Kerja
03 Penyelenggara Kerja

RINGKASAN LAPORAN

RETROSPEK

The year 2004 is very busy for us. As the pioneer Contractor for road maintenance in the West Coast of Terengganu, we have gone through an important milestone. With the valuable working experience, we are looking forward to 2005 with great vigor.

In retrospect, although we faced working problems from time to time, the problems are by no means insurmountable. Our efficiency and response have been tested by the several outstanding emergency works that occurred. We managed and go forward with the experience and being a little bit wiser.

LAPORAN EKSEKUTIF PROJEK

- TAJUK KONTRAK :** PENSWASTAAN PENYENGGARAAN
JALAN-JALAN PERSEKUTUAN DI
SABAH (PANTAI BARAT & PENDALAMAN)
- KLIEN :** JABATAN KERJA RAYA, SABAH
- SYARIKAT :** LINTASAN RESOURCES SDN. BHD.
Lot 1, Block A, Ground Floor,
Wisma TP
Mile 1 ½, Tuaran Road
88400 Kota Kinabalu, Sabah, Malaysia.
- TEMPOH :** 15 TAHUN
- TARIKH MULA :** 01hb September 2003
- TARIKH TAMAT :** 31hb August 2018
- KAWASAN :** PANTAI BARAT & PENDALAMAN
- JALAN TERLIBAT :** Semua Jalan-Jalan Persekutuan Yang Diwartakan
Dibawah Akta Jalan Persekutuan 1959
- PANJANG JALAN :** 764.85 Kilometer
- KATEGORI JALAN :**
- a) Jalan Protocol
 - b) Jalan Utama
 - c) Jalan Sekunder
- SKOP KERJA :**
- a) Penyenggaraan Rutin
 - a) Penyenggaraan Rutin
 - c) Kerja-Kerja Kecemasan

RINGKASAN LAPORAN :

RETROSPECT

The year 2003 is now behind us. As the pioneer Concessionaire for road maintenance in the West Coast of Sabah, we have gone through an important milestone. With the 4-month working experience, we are looking forward to 2004 with renew vigor.

In retrospect, though we faced teething problems from time to time, the problems are by no means insurmountable. Our efficiency and response have been tested by the several demanding emergency works that occurred. We managed and go forward with the experience and being a little bit wiser.

ROUTINE MAINTENANCE

Grass-cutting, drain-clearing, culvert-cleaning, maintenance of road furniture are truly now a matter of routine. Road shoulders repairs are an on-going affair. Where the height of shoulder is such that the free flow of road surface water is impeded, the shoulder is graded down. However, past grading and compaction of earth or grass road shoulder alone is found to be ineffective. Unless the grading is followed by the placement of hard shoulder material, the graded shoulder is immediately damaged by heavy trucks and vehicles that parked on the shoulder. Many of our road shoulders are also damaged from time to time through works by others either without way-leave or with way-leave granted beyond our control and knowledge. Road pavement repair remains a challenging task. In view of the poor existing condition of the certain roads, the number of potholes formed after a heavy downpour literally require days of patching. Nevertheless, we are making every effort to savage the situation.

PERIODIC PROGRAMME & MAINTENANCE

Though the Periodic Maintenance Programmes for 2004 for Pavement and Non Pavement work have been submitted, in view of funding constraint, these have as yet been approved for implementation. Again, we like to emphasize the need for adequate Periodic Maintenance funds to rehabilitate the poor conditions of the road pavement, shoulder and drainage without which the road pavement will continue to deteriorate in a fast pace despite the routine maintenance effort.

EMERGENCY WORK

Thus far, all emergency works that cropped up from time to time were successfully resolved. However, there are signs of road embankment weakness notably along the Kota Kinabalu-Sandakan Road. In view of the monsoon season, some of these areas have the potential of resulting in serious road cutoff if no adequate action is taken.

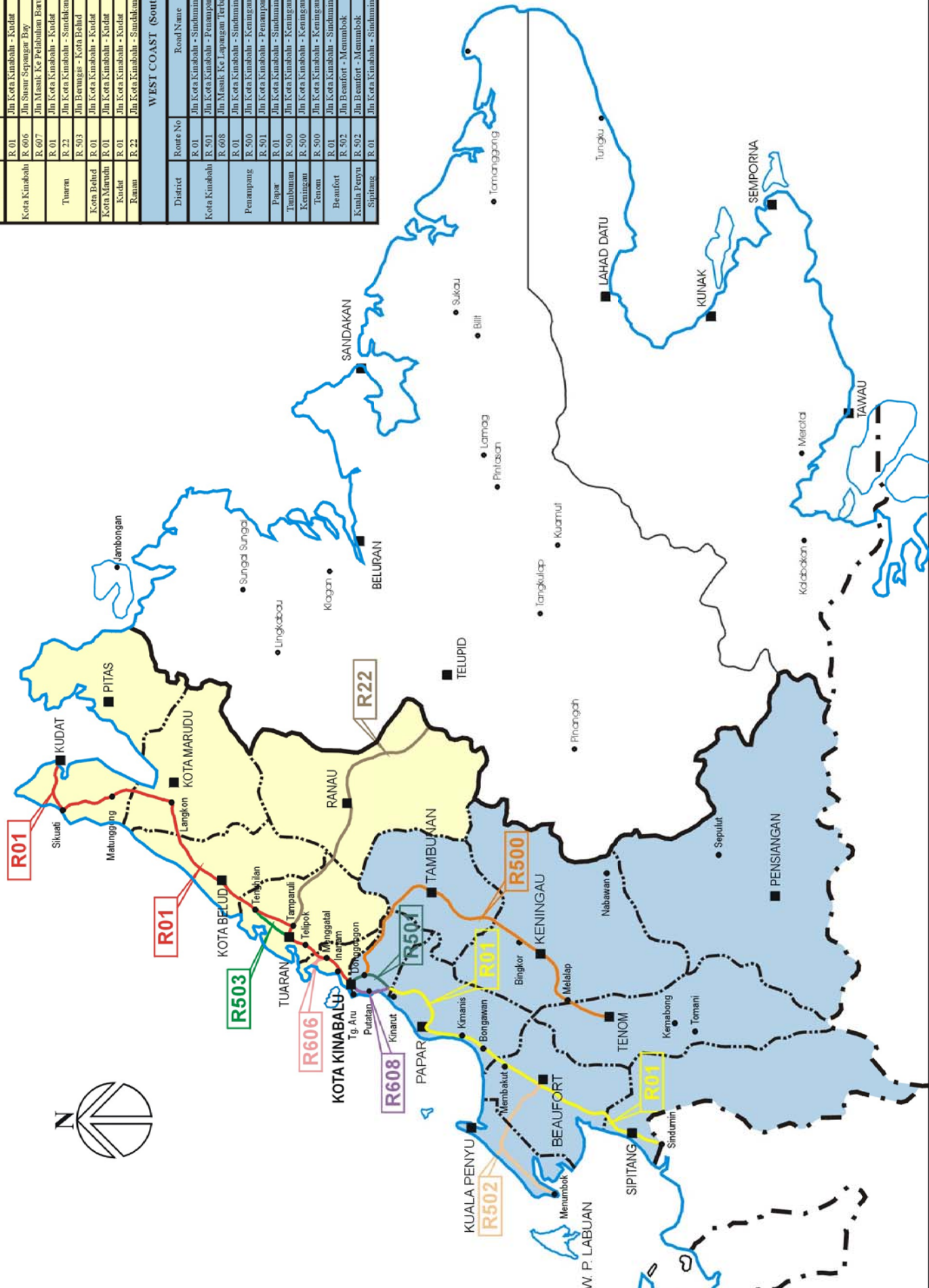
05/01/2004

**CARTA
ORGANISASI SYARIKAT**

PAKEJ NO.

**LOKASI
JALAN PERSEKUTUAN
DI
SABAH
(PANTAI BARAT & PENDALAMAN)**

CONCESSION AREA FOR THE DIVISION OF PANTAI BARAT & PENDALAMAN OF THE STATE OF SABAH



WEST COAST (North)			
District	Route No	Road Name	Change
			From To
Kota Kinabaha	R. 01	Jln Kota Kinabaha - Kudat	0.48 23.98
	R. 606	Jln Susur Sepang Bay	0.00 10.72
	R. 607	Jln Masjid Kee Pelabuan Haji K.K.	0.00 0.34
Tuaran	R. 01	Jln Kota Kinabaha - Kudat	23.98 48.98
	R. 22	Jln Kota Kinabaha - Sandakan	0.00 42.60
	R. 503	Jln Bermags - Kota Behd	0.00 17.70
Kota Marudu	R. 01	Jln Kota Kinabaha - Kudat	58.98 110.95
	R. 01	Jln Kota Kinabaha - Kudat	110.95 140.96
Ranau	R. 01	Jln Kota Kinabaha - Kudat	140.96 190.84
	R. 22	Jln Kota Kinabaha - Sandakan	42.60 140.80
WEST COAST (South)			
District	Route No	Road Name	Change
			From To
Kota Kinabaha	R. 01	Jln Kota Kinabaha - Sindumin	0.00 7.02
	R. 501	Jln Kota Kinabaha - Penampang - Lok Kawi	0.00 3.46
	R. 608	Jln Masjid Kee Lapangan Terbang Lanna	0.00 2.71
Penampang	R. 01	Jln Kota Kinabaha - Sindumin	7.02 18.00
	R. 500	Jln Kota Kinabaha - Kenungau - Tenom	0.00 45.12
Papar	R. 501	Jln Kota Kinabaha - Penampang - Lok Kawi	3.46 19.55
Tambunan	R. 01	Jln Kota Kinabaha - Sindumin	18.00 72.47
Keningau	R. 500	Jln Kota Kinabaha - Kenungau - Tenom	45.12 100.42
Tenom	R. 500	Jln Kota Kinabaha - Kenungau - Tenom	100.42 138.06
Beaufort	R. 01	Jln Kota Kinabaha - Sindumin	72.47 126.00
Kuala Penyu	R. 502	Jln Beaufort - Menumbok	0.00 22.62
	R. 502	Jln Beaufort - Menumbok	22.62 59.67
Sipitang	R. 01	Jln Kota Kinabaha - Sindumin	126.00 156.70

**RINGKASAN
LAPORAN KEMAJUAN
BULANAN**

**KERJA-KERJA
RUTIN**
(ROUTINE MAINTENANCE)

R 01

**PENYENGGARAAN
PERMUKAAN JALAN
(POTHOLE PATCHING)**

Film Batch No: 0483/4



BEFORE

Film Batch No: 0483/5



IN PROGRESS

Film Batch No: 0483/6



AFTER

R01 PAVEMENT

Film Batch No: 0482/16



BEFORE

Film Batch No: 0482/17



IN PROGRESS

Film Batch No: 0482/18



AFTER

DISTRICT : KOTA KINABALU
ROUTE NO. : 01 JALAN KOTA KINABALU - KUDAT

LOCATION : KM 5.300

R01 PAVEMENT

Film Batch No: 0466/2



BEFORE

Film Batch No: 0466/3



IN PROGRESS

Film Batch No: 0466/4



AFTER

Film Batch No: 0482/19



BEFORE

Film Batch No: 0480/20



IN PROGRESS

Film Batch No: 0480/21



AFTER

R01 PAVEMENT

Film Batch No: 0483/7



BEFORE

Film Batch No: 0483/8



IN PROGRESS

Film Batch No: 0483/9



AFTER

DISTRICT : PAPAR

ROUTE NO. : 01 JALAN KOTA KINABALU - SINDUMIN

LOCATION : KM (9.000)

R01 PAVEMENT

Film Batch No: 0529/10



BEFORE

Film Batch No: 0529/11



IN PROGRESS

Film Batch No: 0529/12



AFTER

DISTRICT : PENAMPANG
ROUTE NO. : 500 JALAN KOTA KINABALU - KENINGAU - TENOM
R01 PAVEMENT

LOCATION : (KM 29.300)

Film Batch No: 0453/9



BEFORE

Film Batch No: 0453/10



IN PROGRESS

Film Batch No: 0453/11



AFTER

Film Batch No: 0488/4



BEFORE

Film Batch No: 0488/5



IN PROGRESS

Film Batch No: 0488/6



AFTER

R01 POTHOLE PATCHING

FILM BATCH NO: 2554/6



BEFORE

FILM BATCH NO: 2554/9



IN PROGRESS

FILM BATCH NO: 2554/12



AFTER

R01 POTHOLE PATCHING

FILM BATCH NO: 2553/10



BEFORE

FILM BATCH NO: 2555/20



IN PROGRESS

FILM BATCH NO: 2553/13



AFTER

DISTRICT : TAMBUNAN
ROUTE NO. : 500 JLN KOTA KINABALU-
KENINGAU-TENOM

LOCATION : 80.600 KM RHS

R01 POTHOLE PATCHING

FILM BATCH NO: 2059/3



BEFORE

FILM BATCH NO: 2059/4



IN PROGRESS

FILM BATCH NO: 2059/6



AFTER

DISTRICT : BEAUFORT
ROUTE NO. : 01 JALAN KOTA KINABALU - SINDUMIN LOCATION : KM124.815 (LHS)

R01 PAVEMENT

FILM BATCH NO: 3343/1



BEFORE

FILM BATCH NO: 3598/1



AFTER

LINTASAN RESOURCES SDN BHD (566483-H)
 PRIVATISATION OF WEST COAST SABAH FEDERAL ROADS MAINTENANCE

SUMMARY FOR R01 - POTHOLES PATCHING RECORD

Ending Period : 31hb December 2003

ITEM	DISTRICT	ROUTE NO.	ROADNAME	AREA (m ²)			PREMIX QUANTITY (TON)		
				PREVIOUS MONTH	CURRENT MONTH	CUM. MONTH	PREVIOUS MONTH	CURRENT MONTH	CUM. MONTH
1	Kota Belud	01	Jalan Kota Kinabalu - Kudat	295.90	79.46	375.36	35.91	9.61	45.52
2	Kota Marudu	01	Jalan Kota Kinabalu - Kudat	26.10	3.43	29.53	3.15	0.41	3.56
3	Kudat	01	Jalan Kota Kinabalu - Kudat	27.10	18.25	45.35	3.25	2.20	5.45
TOTAL				349.10	101.14	450.24	42.31	12.22	54.53

LINTASAN RESOURCES SDN BHD (566483-H)
PRIVATISATION OF WEST COAST SABAH FEDERAL ROADS MAINTENANCE

SUMMARY FOR R01 - POTHLES PATCHING RECORD

Ending Period : 31st December 2003

ITEM	DISTRICT	ROUTE NO.	ROADNAME	AREA (m ²)		PREMIX QUANTITY (TON)			
				PREVIOUS MONTH	CURRENT MONTH	CUM. MONTH	PREVIOUS MONTH	CURRENT MONTH	CUM. MONTH
1	Kota Kinabalu	01	Jalan Kota Kinabalu - Kudat	705.09	338.85	1043.94	135.62	46.39	182.01
2	Kota Kinabalu	01	Jalan Kota Kinabalu - Sindumin	34.65	9.59	44.24	6.57	1.30	7.87
3	Kota Kinabalu	606	Jalan Susur Sepangar Bay	33.41	-	33.41	4.93	-	4.93
4	Kota Kinabalu	607	Jalan masuk ke Pelabuhan Baru, K.K.	5.72	-	5.72	0.76	-	0.76
5	Kota Kinabalu	608	Jalan masuk ke Lapangan Terbang Lama, K.K.	10.79	-	10.79	1.49	-	1.49
6	Penampang	500	Jalan Kota Kinabalu - Keningau - Tenom	80.95	197.23	278.18	12.60	28.60	41.20
7	Penampang	501	Jalan Kota Kinabalu - Penampang - Lok Kawi	75.55	112.45	188.00	11.56	17.82	29.38
8	Papar	01	Jalan Kota Kinabalu - Sindumin	440.38	297.61	737.99	62.99	42.47	105.46
9	Tuaran	01	Jalan Kota Kinabalu - Kudat	22.27	35.98	58.25	44.99	5.06	50.05
10	Tuaran	503	Jalan Berungis - Kota Belud	34.47	14.73	49.20	6.46	2.13	8.59
11	Tuaran	22	Jalan Kota Kinabalu - Sandakan	71.41	192.31	263.72	9.70	31.81	41.51
TOTAL				1,514.69	1,198.75	2,713.44	297.67	175.58	473.25

LINTASAN RESOURCES SDN BHD
(566483-H)
 PRIVATISATION OF WEST COAST SABAH FEDERAL ROADS MAINTENANCE

SUMMARY FOR R01 - POTHOLES PATCHING RECORD

Ending Period : 29hb December 2003

ITEM	DISTRICT	ROUTE NO.	ROADNAME	AREA (m ²)			PREMIX QUANTITY (TON)		
				PREVIOUS MONTH	CURRENT MONTH	CUM. MONTH	PREVIOUS MONTH	CURRENT MONTH	CUM. MONTH
1	Tambunan	500	Jalan Kota Kinabalu - Keningau - Tenom	62.23	61.60	123.83	8.09	7.60	15.69
2	Keningau	500	Jalan Kota Kinabalu - Keningau - Tenom	3.21	4.22	7.43	0.39	0.00	0.39
3	Tenom	500	Jalan Kota Kinabalu - Keningau - Tenom	9.64	3.71	13.35	1.16	0.45	1.61
TOTAL				75.08	69.53	144.61	9.64	8.05	17.68

LINTASAN RESOURCES SDN BHD (566483-H)
 PRIVATISATION OF WEST COAST SABAH FEDERAL ROADS MAINTENANCE

SUMMARY FOR R01 - POTHoles PATCHING RECORD

Ending Period : 31st December 2003

ITEM	DISTRICT	ROUTE NO.	ROADNAME	AREA (m ²)			PREMIX QUANTITY (TON)		
				PREVIOUS MONTH	CURRENT MONTH	CUM. MONTH	PREVIOUS MONTH	CURRENT MONTH	CUM. MONTH
1	Ranau	22	Jalan Kota Kinabalu - Sandakan	516.90	177.85	694.75	84.45	41.67	126.12
TOTAL				516.90	177.85	694.75	84.45	41.67	126.12

LINTASAN RESOURCES SDN BHD (566483-II)
PRIVATISATION OF WEST COAST SABAH FEDERAL ROADS MAINTENANCE

SUMMARY FOR R01 - POTHLES PATCHING RECORD

Ending Period : 31st December 2003

ITEM	DISTRICT	ROUTE NO.	ROADNAME	AREA (m ²)		PREMIX QUANTITY (TON)		
				PREVIOUS MONTH	CURRENT MONTH	PREVIOUS MONTH	CURRENT MONTH	CUM. MONTH
1	Beaufort	01	Jalan Kota Kinabalu - Sindumin	73.23	56.00	8.85	6.79	15.64
2	Beaufort	502	Jalan Beaufort-Menumbok	54.12	2.23	6.49	0.30	6.79
3	Sipitang	01	Jalan Kota Kinabalu - Sindumin	38.25	70.16	4.60	8.40	13.00
4	Kuala Penyu	502	Jalan Beaufort-Menumbok	9.54	36.34	1.14	4.36	5.50
TOTAL				175.14	164.73	21.08	19.85	40.93

R 02

**PENYENGGARAAN
BAHU JALAN
(SHOULDER)**

DISTRICT : PENAMPANG
ROUTE NO. : 500 JALAN KOTA KINABALU-KENINGAU-TENOM

LOCATION : KM 33.100

R02 SHOULDER REPAIR

Film Batch No : 0510/2



BEFORE

Film Batch No : 0510/4



IN PROGRESS

Film Batch No : 0510/5



AFTER

DISTRICT : KENINGAU
ROUTE NO. : 500 JLN KOTA KINABALU-
KENINGAU-TENOM

LOCATION : 122.300 KM RHS

R02 ROAD SHOULDER

FILM BATCH NO: 2555/12



BEFORE

FILM BATCH NO: 2695/7



IN PROGRESS

FILM BATCH NO: 2695/8



AFTER

ROADSIDE CUTTING

DISTRICT : KOTA BELUD

ROUTE NO. : 01 JALAN KOTA KINABALU - KUDAT

LOCATION : KM 108.10 RHS

R03 GRASS CUTTING

Film Batch No : 0568/2

Film Batch No : 0568/2



BEFORE

Film Batch No : 0568/4

Film Batch No : 0568/4



AFTER

DISTRICT : PENAMPANG

ROUTE NO. : 501 JALAN KOTA KINABALU - PENAMPANG - LOK KAWI

LOCATION : KM 15.900

R03 GRASS CUTTING

Film Batch No : 0470/22



BEFORE

Film Batch No : 0470/23



IN PROGRESS

Film Batch No : 0470/24



AFTER

R03 GRASS CUTTING

Film Batch No: 0469/2



BEFORE

Film Batch No: 0469/1



IN PROGRESS

Film Batch No: 0469/3



AFTER

DISTRICT : KOTA KINABALU
ROUTE NO. : 01 JALAN KOTA KINABALU - KUDAT

LOCATION : KM 35.120

R03 GRASS CUTTING



BEFORE

Film Batch No: 0467/1



IN PROGRESS

Film Batch No: 0467/2



AFTER

Film Batch No: 0467/5

Film Batch No: 0463/6



BEFORE

Film Batch No: 0463/7



IN PROGRESS

Film Batch No: 0463/11



AFTER

Film Batch No: 0454/24A



BEFORE

Film Batch No: 0463/1



IN PROGRESS

Film Batch No: 0463/2



AFTER

R03 GRASS CUTTING

Film Batch No: 0454/20



BEFORE

Film Batch No: 0454/21



IN PROGRESS

Film Batch No: 0454/23



AFTER

R03 GRASS CUTTING

Film Batch No: 0519/1



BEFORE

Film Batch No: 0519/2



IN PROGRESS

Film Batch No: 0519/3



AFTER

DISTRICT : KENINGAU
ROUTE NO. : 500 JALAN KOTA KINABALU-
KENINGAU-TENOM

LOCATION : 144.200 KM RHS

R03 GRASS CUTTING

FILM BATCH NO: 2555/1



BEFORE

FILM BATCH NO: 2555/7



AFTER

DISTRICT : KENINGAU
ROUTE NO. : 500 JALAN KOTA KINABALU-
KENINGAU-TENOM

LOCATION : 144.200 KM RHS

R03 GRASS CUTTING

FILM BATCH NO: 2555/2



BEFORE

FILM BATCH NO: 2555/8



AFTER

DISTRICT
ROUTE NO.

: BEAUFORT
: 01 JALAN KOTA KINABALU-SINDUMIN

LOCATION : KM73.570

R03 GRASS CUTTING

FILM BATCH NO: 3093/15



BEFORE

FILM BATCH NO: 3093/16



IN PROGRESS

FILM BATCH NO: 3093/17



AFTER

DISTRICT : BEAUFORT

ROUTE NO. : 502 JALAN BEAUFORT - MENUK

LOCATION : KM4.150

R03 GRASS CUTTING

FILM BATCH NO: 3093/23



BEFORE

FILM BATCH NO: 3093/24



IN PROGRESS

FILM BATCH NO: 3093/00



AFTER

R 04

**PENYENGGARAAN
PERABOT JALAN
(ROAD FURNITURE)**

DISTRICT : KOTA KINABALU

ROUTE NO. : 01 JALAN KOTA KINABALU - SINDUMIN

LOCATION : KM 1.150

R04 ROAD FURNITURE

Film Batch No: 0467/9



BEFORE

Film Batch No: 0467/10



IN PROGRESS

Film Batch No: 0467/11



AFTER

Film Batch No: 0472/2



BEFORE

Film Batch No: 0472/3



IN PROGRESS

Film Batch No: 0472/4



AFTER

R04 ROAD FURNITURES

Film Batch No: 0472/20



BEFORE

Film Batch No: 0472/21



IN PROGRESS

Film Batch No: 0472/22



AFTER

DISTRICT : KOTA KINABALU

ROUTE NO : 607 JALAN MASUK KE PELABUHAN BARU K.K

LOCATION : KM 0.210

R04 ROAD FURNITURES

Film Batch No: 0472/8



BEFORE

Film Batch No: 0472/9



IN PROGRESS

Film Batch No: 0472/10



AFTER

Film Batch No: 0488/14



BEFORE

Film Batch No: 0488/15



IN PROGRESS

Film Batch No: 0488/16



AFTER

Film Batch No: 0487/12



BEFORE

Film Batch No: 0489/1



IN PROGRESS

Film Batch No: 0489/2



AFTER

DISTRICT : PENAMPANG

ROUTE NO. : 501 JALAN KOTA KINABALU - PENAMPANG - LOK KAWI
R04 ROAD FURNITURES

LOCATION : KM(7.565)

Film Batch No: 0489/3



BEFORE

Film Batch No: 0489/4



IN PROGRESS

Film Batch No: 0489/5



AFTER

R04 ROAD FURNITURES

Film Batch No: 0405/12



BEFORE

Film Batch No: 0405/13



IN PROGRESS

Film Batch No: 0405/14



AFTER

R04 ROAD FURNITURES

Film Batch No: 0405/18



BEFORE

Film Batch No: 0405/19



IN PROGRESS

Film Batch No: 0405/20



AFTER

R04 ROAD FURNITURES

Film Batch No: 0405/15



BEFORE

Film Batch No: 0405/16



IN PROGRESS

Film Batch No: 0405/17



AFTER

DISTRICT : RANAU

ROUTE NO. : 22 JALAN KOTA KINABALU-SANDAKAN LOCATION : 133.800 KM LHS

R04 ROAD FURNITURES

FILM BATCH NO: 5899/23



BEFORE

FILM BATCH NO: 5899/24



IN PROGRESS

FILM BATCH NO: 5899/25



AFTER

R04 ROAD FURNITURES

FILM BATCH NO: 3220/12



BEFORE

FILM BATCH NO: 3220/00



IN PROGRESS

FILM BATCH NO: 3219/01



AFTER

FILM BATCH NO: 3219/05



BEFORE

FILM BATCH NO: 3219/06



IN PROGRESS

FILM BATCH NO: 3219/07



AFTER

DISTRICT : SIPITANG
ROUTE NO. : 01 JALAN KOTA KINABALU-SINDUMIN LOCATION : KM137.750

R04 ROAD FURNITURES



BEFORE



AFTER

R 05

**PENYENGGARAAN
JAMBATAN & PEMBENTUNG
(BRIDGES & CULVERTS)**

DISTRICT : KUDAT

ROUTE NO. : 01 JALAN KOTA KINABALU-KUDAT

LOCATION : 101.357 KM RHS

R05 BRIDGES & CULVERT

FILM BATCH NO: 7834/32



BEFORE

FILM BATCH NO: 7834/36A



IN PROGRESS

FILM BATCH NO: 7834/00



AFTER

Film Batch No: 0460/24



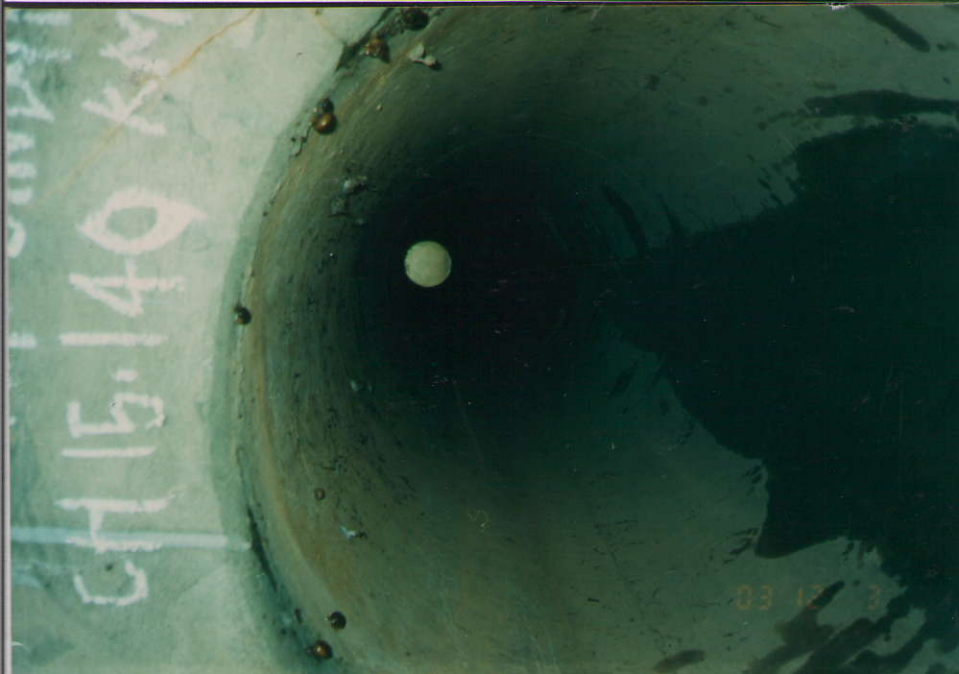
BEFORE

Film Batch No: 0460/25



IN PROGRESS

Film Batch No: 0460/26



AFTER

Film Batch No: 0460/27



BEFORE

Film Batch No: 0460/28



IN PROGRESS

Film Batch No: 0460/29



AFTER

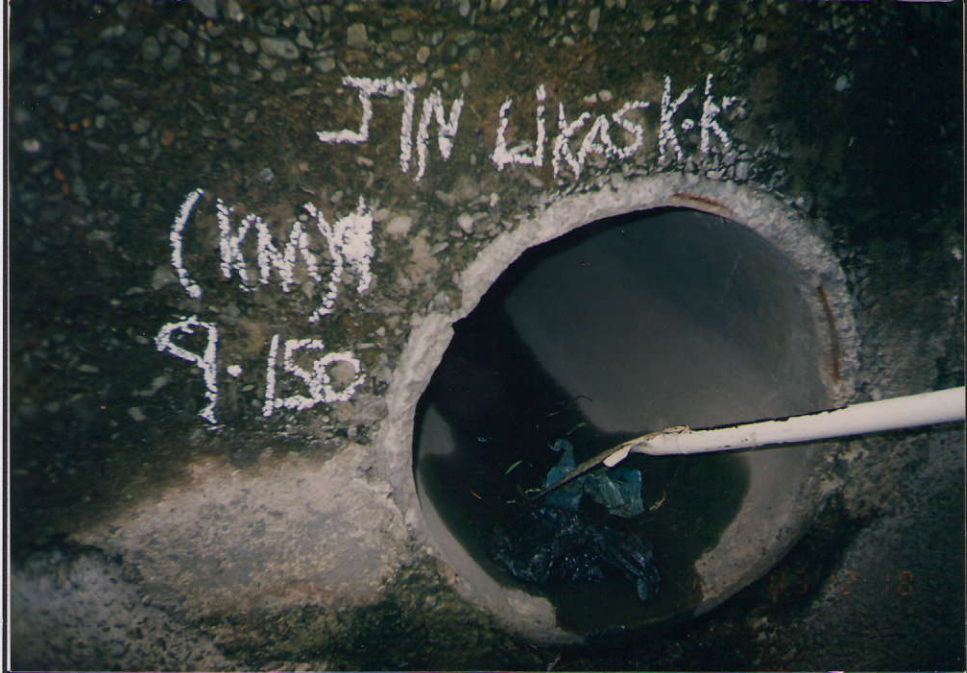
R05 CULVERTS

Film Batch No: 0492/12



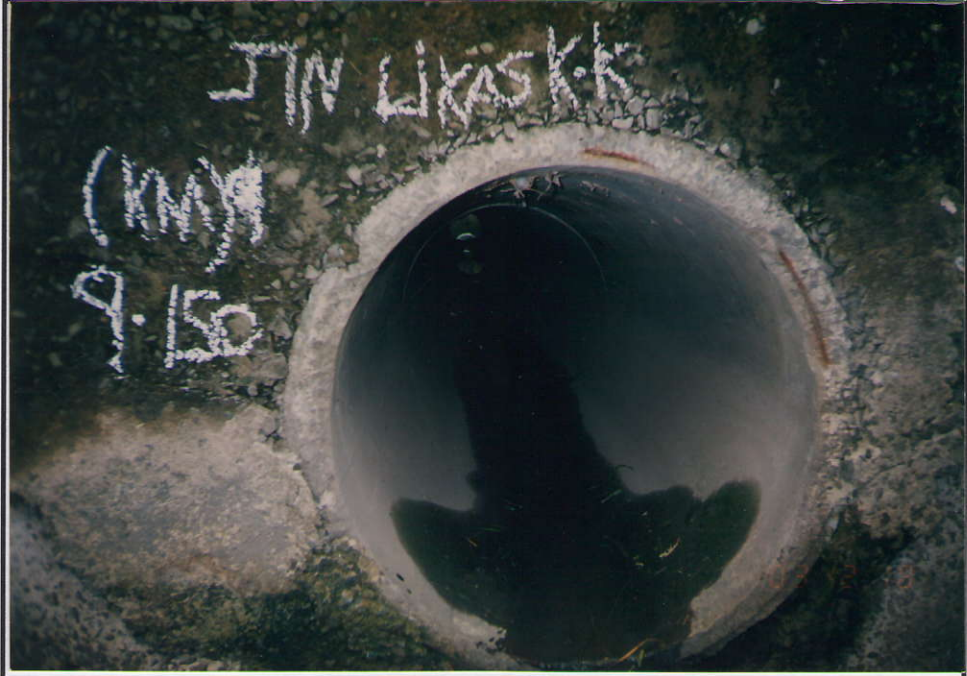
BEFORE

Film Batch No: 0492/13



IN PROGRESS

Film Batch No: 0492/14



AFTER

R05 CULVERTS

Film Batch No: 0490/10



BEFORE

Film Batch No: 0490/11



IN PROGRESS

Film Batch No: 0490/12



AFTER

Film Batch No: 0475/4



BEFORE

Film Batch No: 0475/5



IN PROGRESS

Film Batch No: 0475/3



AFTER

Film Batch No: 0486/2



BEFORE

Film Batch No: 0486/5



IN PROGRESS

Film Batch No: 0513/1



IN PROGRESS

DISTRICT : TUARAN
ROUTE NO. : 01 JALAN KOTA KINABALU - KUDAT
R05 BRIDGES

LOCATION : KM 8.988

Film Batch No: 0513/2



AFTER

R05 BRIDGES & CULVERT

FILM BATCH NO: 2155/23



BEFORE

FILM BATCH NO: 2275/1



IN PROGRESS

FILM BATCH NO: 2555/10



AFTER

DISTRICT : KENINGAU
ROUTE NO. : 500 JLN KOTA KINABALU-
KENINGAU-TENOM

LOCATION : 112.150 KM RHS

R05 BRIDGES & CULVERT

FILM BATCH NO: 2155/24



BEFORE

FILM BATCH NO: 2155/25



IN PROGRESS

FILM BATCH NO: 2555/11



AFTER

DISTRICT : RANAU

ROUTE NO. : 22 JALAN KOTA KINABALU-SANDAKAN LOCATION : 144.700 KM LHS

R05 BRIDGES & CULVERT

FILM BATCH NO: 6238/6



BEFORE

FILM BATCH NO: 6238/7



IN PROGRESS

FILM BATCH NO: 6238/8



AFTER

R05 BRIDGES & CULVERTS

FILM BATCH NO: 3219/8



BEFORE

FILM BATCH NO: 3219/9



IN PROGRESS

FILM BATCH NO: 3219/10



AFTER

R 07

**PENYENGGARAAN
LONGKANG
(DRAINAGE)**

DISTRICT : KUDAT
ROUTE NO. : 01 JALAN KOTA KINABALU-KUDAT

LOCATION : 87.310 KM RHS

R07 DRAINAGE

FILM BATCH NO: A01/12/7



BEFORE

FILM BATCH NO: A01/12/9



AFTER

Film Batch No: 0469/9



BEFORE

Film Batch No: 0469/8



IN PROGRESS

Film Batch No: 0469/7



AFTER

DISTRICT : KOTA KINABALU

ROUTE NO. : 01 JALAN KOTA KINABALU - KUDAT

LOCATION : KM 5.400 20.830

R07 DRAINAGE

Film Batch No: 0474/7



BEFORE

Film Batch No: 0474/8



IN PROGRESS

Film Batch No: 0474/9



AFTER

Film Batch No: 0464/1



BEFORE

Film Batch No: 0464/3



IN PROGRESS

Film Batch No: 0464/7



AFTER

Film Batch No: 0464/4



BEFORE

Film Batch No: 0464/5



IN PROGRESS

Film Batch No: 0464/6



AFTER

DISTRICT : TUARAN
ROUTE NO. : 22 JALAN KOTA KINABALU - SANDAKAN
R07 DRAINAGE

LOCATION : KM 26.860

Film Batch No: 0464/12



BEFORE

Film Batch No: 0464/12E



IN PROGRESS

Film Batch No: 0476/1



AFTER

Film Batch No:0514/6



BEFORE

Film Batch No:0514/7



IN PROGRESS

Film Batch No:0514/5



AFTER

DISTRICT : KENINGAU
ROUTE NO. : 500 JLN KOTA KINABALU-
KENINGAU-TENOM

LOCATION : 130.500 KM RHS

R07 DRAINAGE

FILM BATCH NO: 2155/20



BEFORE

FILM BATCH NO: 2155/22



IN PROGRESS

FILM BATCH NO: 2275/3



AFTER

DISTRICT
ROUTE NO

TENOM
300 JLN KOTA KINABALU-
KENINGAU-TENOM

LOCATION : 173.400 KM RHS

R07 DRAINAGE

DISTRICT : TAMBUNAN
ROUTE NO. : 500 JALAN KOTA KINABALU-
KENINGAU-TENOM

LOCATION : 79.600 KM LHS

R07 DRAINAGE

FILM BATCH NO: 4845/4



BEFORE

FILM BATCH NO: 4845/10



AFTER

R07 DRAINAGE

FILM BATCH NO: 1221/18



BEFORE

FILM BATCH NO: 1221/21



IN PROGRESS

FILM BATCH NO: 1221/24



AFTER

R07 DRAINAGE

FILM BATCH NO: 3093/13



BEFORE

FILM BATCH NO: 3093/14



IN PROGRESS

FILM BATCH NO: 3093/18



AFTER

R07 DRAINAGE

FILM BATCH NO: 2883/07



BEFORE

FILM BATCH NO: 2883/08



IN PROGRESS

FILM BATCH NO: 2883/09



AFTER

B

**PEMERIKSAAN
RUTIN
(INSPECTION)**

DISTRICT : BEAUFORT

ROUTE NO. : 502 JALAN BEAUFORT - MENUMBOK

LOCATION : KM11.280

ROUTINE INSPECTION

FILM BATCH NO: 3589/4



BEFORE

FILM BATCH NO: 3589/5



AFTER

DISTRICT : BEAUFORT
ROUTE NO. : 502 JALAN BEAUFORT - MENUMBOK LOCATION : KM20.300

ROUTINE INSPECTION

FILM BATCH NO: 3589/2



BEFORE

FILM BATCH NO: 3589/3



AFTER

DISTRICT : SIPITANG
ROUTE NO. : 01 JALAN KOTA KINABALU-SINDUMIN LOCATION : KM136.241

ROUTINE INSPECTION

FILM BATCH NO: 3303/03



BEFORE

FILM BATCH NO: 3303/04



AFTER

DISTRICT : BEAUFORT
ROUTE NO. : 01 JALAN KOTA KINABALU-SINDUMIN LOCATION : KM73.275

ROUTINE INSPECTION

FILM BATCH NO: 3589/15



BEFORE

FILM BATCH NO: 3589/16



AFTER