

R 07

**PENYENGGARAAN
LONGKANG
(DRAINAGE)**

DISTRICT : KOTA BELUD
ROUTE NO : 01-JALAN KOTA KINABALU-KUDAT
LOCATION : CH 77.870

R07 DRAINAGE



Film Batch No: PB080014

BEFORE



Film Batch No: PB080015

IN PROGRESS



Film Batch No: PB080019

AFTER

DISTRICT : KUDAT
ROUTE NO : 01-JALAN KOTA KINABALU-KUDAT
LOCATION : CH 182.832

R07 DRAINAGE



Film Batch No: PB230016

BEFORE



Film Batch No: PB230017

IN PROGRESS



Film Batch No: PB230019

AFTER

DISTRICT : KOTA KINABALU
ROUTE NO : 608 JALAN MASUK KE LAPANGAN TEBANG LAMA
LOCATION : KM1.800 (LHS)

R07 DRAINAGE



Picture No: 4114/012

BEFORE



Film Batch No. 4114/13

IN PROGRESS

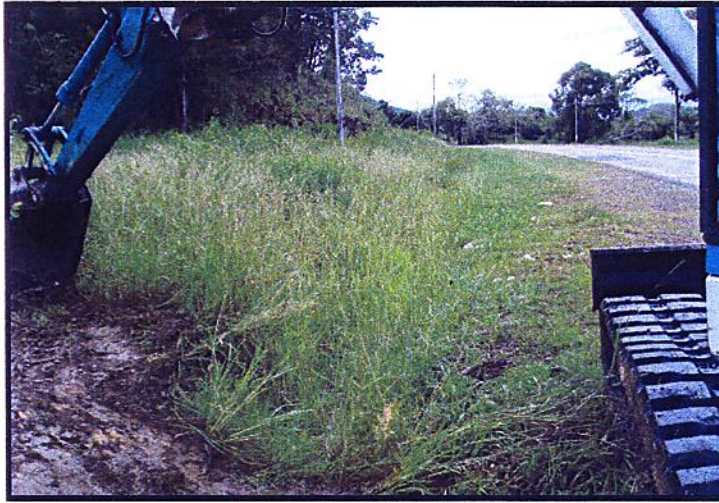


Film Batch No: 4114/14

AFTER

DISTRICT : PAPAR
ROUTE NO : 01 JALAN KOTA KINABALU-SINDUMIN
LOCATION : CH20.740 (LHS)

R07 DRAINAGE



Picture No: 17114/001

BEFORE



Picture No. 17114/002

IN PROGRESS

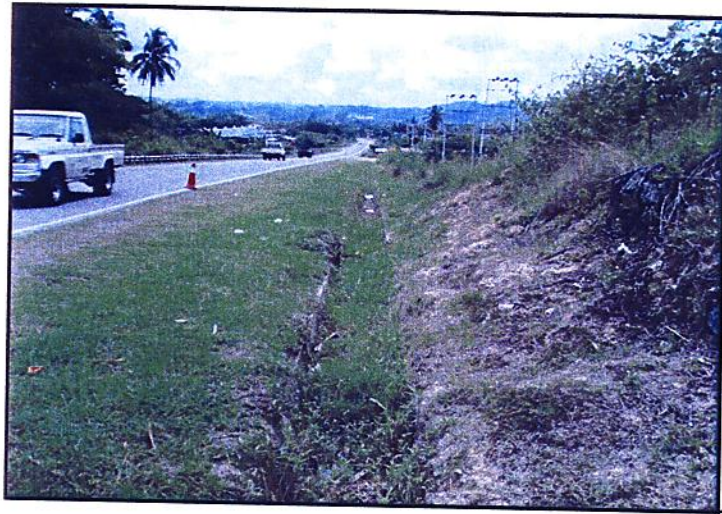


Picture No. 17114/011

AFTER

DISTRICT : KENINGAU
ROUTE NO : 500 JALAN KOTA KINABALU-KENINGAU-TENOM
LOCATION : CH124.500 - LHS

R07 DRAINAGE



Film Batch No. R07-1104-04

BEFORE



Film Batch No. R07-1104-05

IN PROGRESS

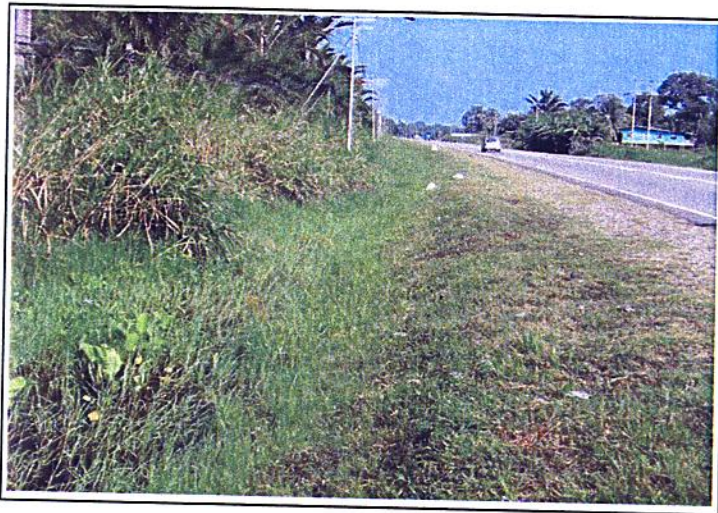


Film Batch No. R07-1104-06

AFTER

DISTRICT : BEAUFORT
ROUTE NO : 502 JALAN BEAUFORT - MENUMBOK
LOCATION : CH5.800 (KM5.800) - LHS

R07 DRAINAGE



BEFORE



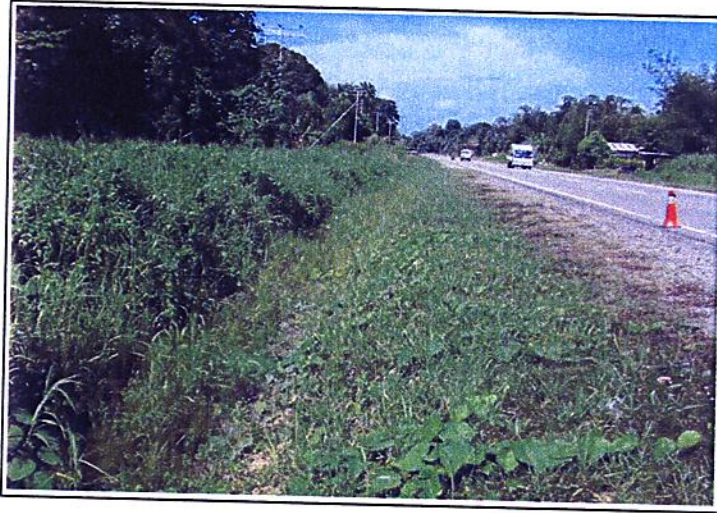
IN PROGRESS



AFTER

DISTRICT : BEAUFORT
ROUTE NO : 502 JALAN BEAUFORT - MENUMBOK
LOCATION : CH12.050 (KM12.050) - LHS

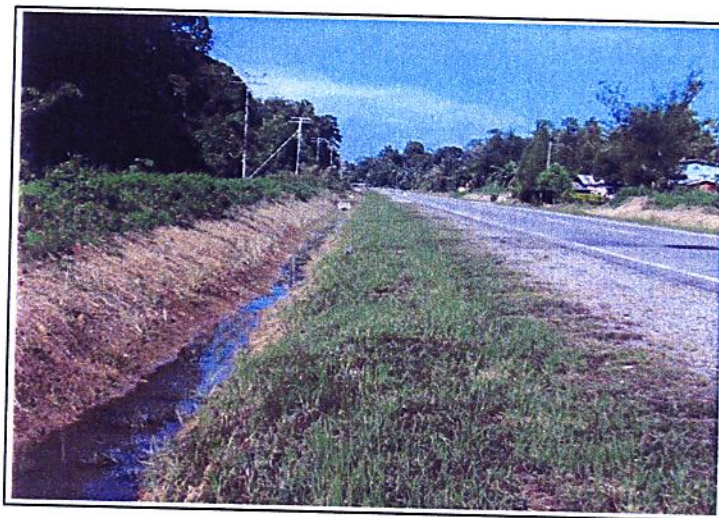
R07 DRAINAGE



BEFORE



IN PROGRESS



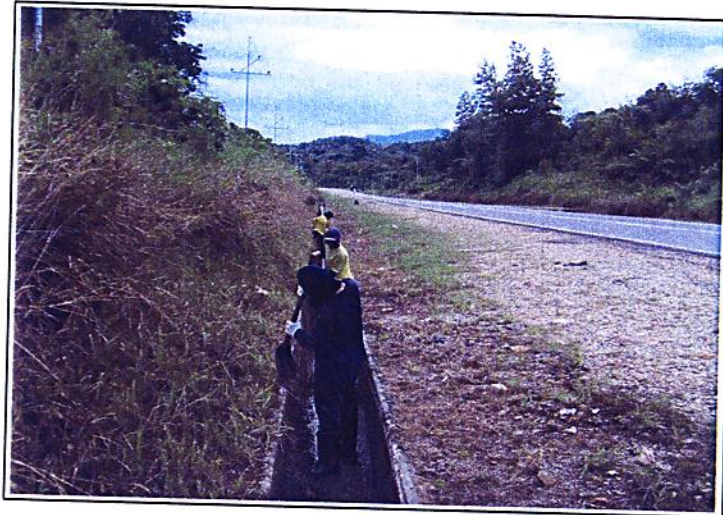
AFTER

DISTRICT : BEAUFORT
ROUTE NO : 01 JALAN KOTA KINABALU - SINDUMIN
LOCATION : CH116.750 (KM118.510) - RHS

R07 DRAINAGE



BEFORE



IN PROGRESS



AFTER