

DISTRICT : KOTA BELUD
ROUTE NO : 01-JALAN KOTA KINABALU - KUDAT
LOCATION : CH 60.370

R07 DRAINAGE



Film Batch No: P1010003

BEFORE



Film Batch No: P1010006

IN PROGRESS



Film Batch No: P1010039

AFTER

DISTRICT : PENAMPANG
ROUTE NO : 501 JALAN KK-PENAMPANG-LOK KAWI
LOCATION : CH9.40 (LHS)

R07 DRAINAGE



Film Batch No: 1494-DSC975

BEFORE



Film Batch No: 1494-DSC986

IN PROGRESS



Film Batch No: 1494-DSC997

AFTER

R07 DRAINAGE

FILM BATCH NO: 3439/10



BEFORE

FILM BATCH NO: 3439/11



IN PROGRESS

FILM BATCH NO: 3439/12



AFTER

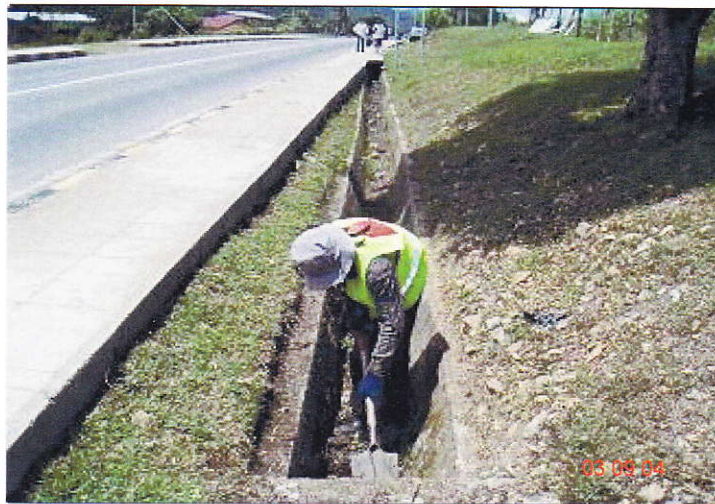
DISTRICT : TAMBUNAN
ROUTE NO : 500 JALAN KOTA KINABALU-KENINGAU-TENOM
LOCATION : CH70.600 (RHS)

R07 DRAINAGE



Film Batch No: R07-0309/38

BEFORE



Film Batch No: R07-0309/39

IN PROGRESS



Film Batch No: R07-0309/40

AFTER

157

DISTRICT : TAMBUNAN
ROUTE NO : 500 JALAN KOTA KINABALU-KENINGAU-TENOM
LOCATION : CH71.500 (RHS)

R07 DRAINAGE



Film Batch No: R07-0309/1

BEFORE



Film Batch No: R07-0309/2

IN PROGRESS



Film Batch No: R07-0309/3

AFTER

152

DISTRICT : KENINGAU
ROUTE NO : 500 JALAN KOTA KINABALU-KENINGAU-TENOM
LOCATION : CH120.100 (LHS)

R07 DRAINAGE



Film Batch No: R07-0909-10

BEFORE



Film Batch No: R07-0909-11

IN PROGRESS



Film Batch No: R07-0909-12

AFTER

153

DISTRICT : KENINGAU
ROUTE NO : 500 JALAN KOTA KINABALU-KENINGAU-TENOM
LOCATION : CH131.250 (RHS)

R07 DRAINAGE



Film Batch No: R07-1109-10

BEFORE



Film Batch No: R07-1109-11

IN PROGRESS



Film Batch No: R07-1109-12

AFTER

159

R07: DRAINAGE

FILM BATCH NO: 1670/6



BEFORE

FILM BATCH NO: 1670/7



IN PROGRESS

FILM BATCH NO: 1670/9



AFTER

R07: DRAINAGE



FILM BATCH NO: 1463/10

BEFORE



FILM BATCH NO: 1463/2

IN PROGRESS



FILM BATCH NO: 1463/11

AFTER

DISTRICT : BEAUFORT
ROUTE NO : 01 JALAN KOTA KINABALU - SINDUMIN
LOCATION : CH82.620 (KM84.380) - LHS

R07 DRAINAGE



BEFORE



IN PROGRESS



AFTER

157

DISTRICT : BEAUFORT
ROUTE NO : 01 JALAN KOTA KINABALU - SINDUMIN
LOCATION : CH92.250 (KM94.010) - RHS

R07 DRAINAGE



BEFORE



IN PROGRESS



AFTER

108

DISTRICT : BEAUFORT
ROUTE NO : 01 JALAN KOTA KINABALU - SINDUMIN
LOCATION : CH94.662 (KM96.422) - LHS

R07 DRAINAGE



BEFORE



IN PROGRESS

