

R 05

**PENYENGGARAAN
JAMBATAN & PEMBENTUNG
(BRIDGES & CULVERTS)**

DISTRICT : PAPAR
ROUTE NO : 01 JALAN KOTA KINABALU-SINDUMIN
LOCATION : CH25.884 (C84)

R05 CULVERT CLEARING



BEFORE



IN PROGRESS



AFTER

DISTRICT : KOTA KINABALU
ROUTE NO : 01 JALAN KOTA KINABALU - KUDAT
LOCATION : CH 6.356

R05 CULVERT CLEARING



BEFORE



IN PROGRESS



AFTER

DISTRICT : KOTA KINABALU
ROUTE NO : 01 JALAN KOTA KINABALU - KUDAT
LOCATION : CH 5.900

R05 CULVERT CLEARING



BEFORE



IN PROGRESS



AFTER

DISTRICT : RANAU
ROUTE NO : 22 - JALAN KOTA KINABALU - SANDAKAN
LOCATION : CH 62.260 (KM 98.860)

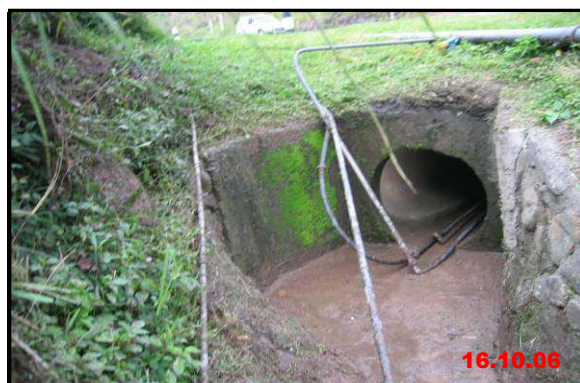
R05 CULVERT CLEARING



BEFORE



IN PROGRESS



AFTER

DISTRICT : RANAU
ROUTE NO : 22 - JALAN KOTA KINABALU - SANDAKAN
LOCATION : CH 62.810 (KM 99.410)

R05 CULVERT CLEARING



BEFORE



IN PROGRESS



AFTER

DISTRICT : TENOM
ROUTE NO : 500 - JALAN KOTA KINABALU - KENINGAU - TENOM
LOCATION : CH 145.550 / KM 155.450 - Inlet

R05 CULVERT CLEARING



BEFORE



IN PROGRESS



AFTER

DISTRICT : BEAUFORT
ROUTE NO : 01 JALAN KOTA KINABALU - SINDUMIN
LOCATION : CH107.664 (KM109.424) -LHS

R05 CULVERT CLEARING



BEFORE



IN PROGRESS



AFTER

LINTASAN RESOURCES SDN. BHD.
CULVERT CLEARING
GRAND SUMMARY

MONTH: OCTOBER 2006

DISTRICT	ROUTE NO.	ROAD NAME	Single Cell			Twin Cell			Multi Cell		
			Previous	Current	Cumm.	Previous	Current	Cumm.	Previous	Current	Cumm.
			(No.)	(No.)	(No.)	(No.)	(No.)	(No.)	(No.)	(No.)	(No.)
Kota Belud	01	Jalan Kota Kinabalu-Kudat	103	21	124	9	0	9	2	0	2
Kota Marudu	01	Jalan Kota Kinabalu-Kudat	50	0	50	39	0	39	8	0	8
Kudat	01	Jalan Kota Kinabalu-Kudat	160	22	182	51	8	59	3	0	3
Tuaran	01	Jalan Kota Kinabalu-Kudat	166	0	166	4	0	4	0	0	0
	22	Jalan Kota Kinabalu-Sandakan	99	33	132	4	2	6	0	0	0
	503	Jalan Berungis-Kota Belud	139	0	139	6	0	6	4	0	4
Kota Kinabalu	01	Jalan Kota Kinabalu-Kudat	154	51	205	26	11	37	11	7	18
	01	Jalan Kota Kinabalu-Sindumin	40	0	40	14	0	14	0	0	0
	501	Jalan Kota Kinabalu-Penampang-Lok Kawi	4	0	4	4	0	4	0	0	0
	606	Jalan Susur Sepangar Bay	69	14	83	6	1	7	1	0	1
	607	Jalan Masuk Ke Pelabuhan Baru	3	3	6	0	0	0	0	0	0
	608	Jalan Masuk Ke Lapangan Terbang Lama	9	0	9	3	0	3	0	0	0
Penampang	01	Jalan Kota Kinabalu-Sindumin	49	0	49	0	0	0	8	0	8
	500	Jalan Kota Kinabalu-Keningau-Tenom	123	0	123	5	0	5	0	0	0
	501	Jalan Kota Kinabalu-Penampang-Lok Kawi	58	0	58	3	0	3	0	0	0
Papar	01	Jalan Kota Kinabalu-Sindumin	174	39	213	98	4	102	28	0	28
Ranau	22	Jalan Kota Kinabalu-Sandakan	425	32	457	24	2	26	7	0	7
Tambunam	500	Jalan Kota Kinabalu-Keningau-Tenom	328	0	328	28	0	28	10	0	10
Keningau	500	Jalan Kota Kinabalu-Keningau-Tenom	141	28	169	18	2	20	4	1	5
Tenom	500	Jalan Kota Kinabalu-Keningau-Tenom	74	9	83	17	1	18	9	0	9
Beaufort	01	Jalan Kota Kinabalu-Sindumin	164	32	196	83	7	90	49	11	60
	502	Jalan Beaufort-Menumbok	52	0	52	6	0	6	0	0	0
Sipitang	01	Jalan Kota Kinabalu-Sindumin	73	0	73	19	0	19	3	0	3
Kuala Penyu	502	Jalan Beaufort-Menumbok	140	0	140	58	0	58	2	0	2
TOTAL			2797	284	3081	525	38	563	149	19	168

LINTASAN RESOURCES SDN. BHD.
PRIVATISATION OF WEST COAST SABAH FEDERAL ROADS MAINTENANCE

SUMMARY - CULVERT CLEARING

MONTH : OCTOBER 2006

ITEM	DISTRICT	ROUTE NO	ROAD NAME	Single Cell			Twin Cell			3 / 4 / 5 / 6-Cell		
				Previous	Current	Cumm.	Previous	Current	Cumm.	Previous	Current	Cumm.
				(No.)	(No.)	(No.)	(No.)	(No.)	(No.)	(No.)	(No.)	(No.)
1	Kota Belud	01	Jalan Kota Kinabalu - Kudat	103	21	124	9	-	9	2	-	2
2	Kota Marudu	01	Jalan Kota Kinabalu - Kudat	50	-	50	39	-	39	8	-	8
3	Kudat	01	Jalan Kota Kinabalu - Kudat	160	22	182	51	8	59	3	-	3
TOTAL :				313	43	356	99	8	107	13	-	13

LINTASAN RESOURCES SDN. BHD.
MAINTENANCE OF FEDERAL ROADS - WEST COAST, SABAH
R05 CULVERT CLEARING RECORD

DISTRICT: KOTA BELUD

ROUTE NO: 01

ROAD NAME: JALAN KOTA KINABALI - KUDAT

MONTH: OCTOBER 2006

Item	Chainage	Culvert No.	Single Cell				Twin Cell				Multi Cell				Date of Clearing	REMARKS
			RCP (No.)	BC (No.)	CMP (No.)	Total (No.)	RCP (No.)	BC (No.)	CMP (No.)	Total (No.)	RCP (No.)	BC (No.)	CMP (No.)	Total (No.)		
BROUGHT FORWARD:			88	6	9	103	6	3		9	2			2		
1	59.790	1	1			1				0				0	13/10/06	
2	60.170	2	1			1				0				0	15/10/06	
3	60.680	3	1			1				0				0	15/10/06	
4	61.100	4	1			1				0				0	17/10/06	
5	61.245	5	1			1				0				0	19/10/06	
6	61.400	6	1			1				0				0	19/10/06	
7	61.520	7	1			1				0				0	20/10/06	
8	61.650	8	1			1				0				0	20/10/06	
9	61.770	9	1			1				0				0	20/10/06	
10	62.420	10	1			1				0				0	20/10/06	
11	62.620	11	1			1				0				0	20/10/06	
12	62.940	12		1		1				0				0	20/10/06	
13	63.220	13	1			1				0				0	21/10/06	
14	63.370	14	1			1				0				0	21/10/06	
15	63.560	15	1			1				0				0	21/10/06	
CARRIED FORWARD :			102	7	9	118	6	3	0	9	2	0	0	2		

LINTASAN RESOURCES SDN. BHD.
MAINTENANCE OF FEDERAL ROADS - WEST COAST, SABAH
R05 CULVERT CLEARING RECORD

DISTRICT: KOTA BELUD
ROUTE NO: 01
ROAD NAME: JALAN KOTA KINABALI - KUDAT
MONTH: OCTOBER 2006

Item	Chainage	Culvert No.	Single Cell				Twin Cell				Multi Cell				Date of Clearing	REMARKS
			RCP (No.)	BC (No.)	CMP (No.)	Total (No.)	RCP (No.)	BC (No.)	CMP (No.)	Total (No.)	RCP (No.)	BC (No.)	CMP (No.)	Total (No.)		
BROUGHT FORWARD:			102	7	9	118	6	3	0	9	2	0	0	2		
16	75.260	39	1			1				0				0	22/10/06	Protocol 1st cycle
17	74.120	38		1		1				0				0	22/10/06	"
18	73.970	37	1			1				0				0	23/10/06	"
19	73.770	36	1			1				0				0	23/10/06	"
20	73.610	35	1			1				0				0	23/10/06	"
21	73.470	34	1			1				0				0	23/10/06	"
22																
23																
24																
25																
26																
27																
28																
29																
30																
BALANCE END OF OCT :			107	8	9	124	6	3	0	9	2	0	0	2		

LINTASAN RESOURCES SDN. BHD.
MAINTENANCE OF FEDERAL ROADS - WEST COAST, SABAH
R05 CULVERT CLEARING RECORD

DISTRICT: KOTA MARUDU

ROUTE NO: 01

ROAD NAME: JALAN KOTA KINABALU - KUDAT

MONTH: OCTOBER 2006

Item	Chainage	Culvert No.	Single Cell				Twin Cell				Multi Cell				Date of Clearing	REMARKS
			RCP (No.)	BC (No.)	CMP (No.)	Total (No.)	RCP (No.)	BC (No.)	CMP (No.)	Total (No.)	RCP (No.)	BC (No.)	CMP (No.)	Total (No.)		
BROUGHT FORWARD:			39	1	10	50	24	9	6	39	4	0	4	8		
1						0				0				0		
2						0				0				0		
3						0				0				0		
4						0				0				0		
5						0				0				0		
6						0				0				0		
7						0				0				0		
8						0				0				0		
9						0				0				0		
10						0				0				0		
11						0				0				0		
12						0				0				0		
13						0				0				0		
14						0				0				0		
15						0				0				0		
BALANCE END OF OCT:			39	1	10	50	24	9	6	39	4	0	4	8		

LINTASAN RESOURCES SDN. BHD.
MAINTENANCE OF FEDERAL ROADS - WEST COAST, SABAH
R05 CULVERT CLEARING RECORD

DISTRICT: KUDAT
ROUTE NO: 01
ROAD NAME: JALAN KOTA KINABALU - KUDAT
MONTH: OCTOBER 2006

Item	Chainage	Culvert No.	Single Cell				Twin Cell				Multi Cell				Date of Clearing	REMARKS
			RCP (No.)	BC (No.)	CMP (No.)	Total (No.)	RCP (No.)	BC (No.)	CMP (No.)	Total (No.)	RCP (No.)	BC (No.)	CMP (No.)	Total (No.)		
BROUGHT FORWARD:			126	14	20	160	23	27	1	51	0	2	1	3		
1	185.670	148	1			1				0				0	02/10/06	
2	185.350	147	1			1				0				0	02/10/06	
3	184.550	146				0	1			1				0	03/10/06	
4	184.390	145				0		1		1				0	03/10/06	
5	183.830	144	1			1				0				0	04/10/06	
6	183.495	143	1			1				0				0	04/10/06	
7	182.980	142	1			1				0				0	05/10/06	
8	182.370	141	1			1				0				0	05/10/06	
9	182.365	140	1			1				0				0	07/10/06	
10	182.320	139	1			1				0				0	07/10/06	
11	182.132	138 A	1			1				0				0	11/10/06	
12	180.750	138	1			1				0				0	11/10/06	
13	180.480	137				0		1		1				0	14/10/06	
14	179.570	136	1			1				0				0	16/10/06	
15	179.260	135	1			1				0				0	16/10/06	
CARRIED FORWARD :			138	14	20	172	24	29	1	54	0	2	1	3		

LINTASAN RESOURCES SDN. BHD.
MAINTENANCE OF FEDERAL ROADS - WEST COAST, SABAH
R05 CULVERT CLEARING RECORD

DISTRICT: KUDAT
ROUTE NO: 01
ROAD NAME: JALAN KOTA KINABALU - KUDAT
MONTH: OCTOBER 2006

Item	Chainage	Culvert No.	Single Cell				Twin Cell				Multi Cell				Date of Clearing	REMARKS
			RCP (No.)	BC (No.)	CMP (No.)	Total (No.)	RCP (No.)	BC (No.)	CMP (No.)	Total (No.)	RCP (No.)	BC (No.)	CMP (No.)	Total (No.)		
BROUGHT FORWARD:			138	14	20	172	24	29	1	54	0	2	1	3		
16	179.120	134		1		1				0				0	18/10/06	
17	179.020	133		1		1				0				0	18/10/06	
18	179.280	132	1			1				0				0	20/10/06	
19	178.200	131				0		1	1					0	20/10/06	
20	178.030	130	1			1				0				0	20/10/06	
21	177.880	129	1			1				0				0	26/10/06	
22	177.740	128	1			1				0				0	26/10/06	
23	177.650	127				0		1	1					0	26/10/06	
24	177.290	126				0		1	1					0	26/10/06	
25	175.620	125				0		1	1					0	27/10/06	
26	175.580	124				0		1	1					0	27/10/06	
27	175.035	123	1			1				0				0	27/10/06	
28	175.030	122	1			1				0				0	30/10/06	
29	174.790	121	1			1				0				0	30/10/06	
30	174.630	120	1			1				0				0	31/10/06	
BALANCE END OF OCT :			146	16	20	182	24	34	1	59	0	2	1	3		

LINTASAN RESOURCES SDN. BHD.
PRIVATISATION OF WEST COAST SABAH FEDERAL ROADS MAINTENANCE

SUMMARY - CULVERT CLEARING

Month: October 2006

ITEM	DISTRICT	ROUTE NO	ROAD NAME	Single Cell			Twin Cell			Multi Cell		
				Previous	Current	Cumm.	Previous	Current	Cumm.	Previous	Current	Cumm.
				(No.)	(No.)	(No.)	(No.)	(No.)	(No.)	(No.)	(No.)	(No.)
1	Kota Kinabalu	01	Jalan Kota Kinabalu - Kudat	154	51	205	26	11	37	11	7	18
2	Tuaran	01	Jalan Kota Kinabalu - Kudat	166	-	166	4	-	4	-	-	-
3	Tuaran	22	Jalan Kota Kinabalu - Sandakan	99	33	132	4	2	6	-	-	-
4	Tuaran	503	Jalan Berungis - Kota Belud	139	-	139	6	-	6	4	-	4
5	Kota Kinabalu	606	Jalan Susur Sepangar Bay	69	14	83	6	1	7	1	-	1
6	Kota Kinabalu	607	Jalan Masuk Ke Pelabuhan Baru, KK	3	3	6	-	-	-	-	-	-
TOTAL :				630	101	731	46	14	60	16	7	23

LINTASAN RESOURCES SDN. BHD.
MAINTENANCE OF FEDERAL ROADS - WEST COAST, SABAH
R05 CULVERT CLEARING RECORD

DISTRICT: KOTA KINABALU
ROUTE NO: 01
ROAD NAME: JALAN KOTA KINABALU - KUDAT
MONTH: OCTOBER 2006

Item	Chainage	Culvert No.	Single Cell				Twin Cell				Multi Cell				Date of Clearing	REMARKS
			RCP (No.)	BC (No.)	CMP (No.)	Total (No.)	RCP (No.)	BC (No.)	CMP (No.)	Total (No.)	RCP (No.)	BC (No.)	CMP (No.)	Total (No.)		
BROUGHT FORWARD:			180	6	0	186	21	15	0	36	6	8	3	17		
46	14.278		1			1									26/10/2006	
47	14.502		1			1									26/10/2006	
48	14.542		1			1									26/10/2006	
49	14.980		1			1									26/10/2006	
50	15.075		1			1									26/10/2006	
51	15.160		1			1									26/10/2006	
52	15.414		1			1									26/10/2006	
53	15.520	A1015416	1			1									26/10/2006	
54	15.660		1			1									26/10/2006	
55	15.660		1			1									26/10/2006	
56	15.785		1			1									26/10/2006	
57	15.800		1			1									26/10/2006	
58	16.125		1			1									28/10/2006	
59	16.151		1			1									28/10/2006	
60	16.237		1			1									28/10/2006	
CARRIED FORWARD :			195	6	0	201	21	15	0	36	6	8	3	17		

LINTASAN RESOURCES SDN. BHD.
 MAINTENANCE OF FEDERAL ROADS - WEST COAST, SABAH
R05 CULVERT CLEARING RECORD

DISTRICT: KOTA KINABALU
ROUTE NO: 01
ROAD NAME: JALAN KOTA KINABALU - KUDAT
MONTH: OCTOBER 2006

Item	Chainage	Culvert No.	Single Cell				Twin Cell				Multi Cell				Date of Clearing	REMARKS
			RCP (No.)	BC (No.)	CMP (No.)	Total (No.)	RCP (No.)	BC (No.)	CMP (No.)	Total (No.)	RCP (No.)	BC (No.)	CMP (No.)	Total (No.)		
BROUGHT FORWARD:			195	6	0	201	21	15	0	36	6	8	3	17		
61	16.694		1			1									28/10/2006	
62	16.957		1			1									28/10/2006	
63	16.958		1			1									28/10/2006	
64	17.000	A080070					1			1					28/10/2006	
65	17.127										1		1		28/10/2006	
66	17.150		1			1									28/10/2006	
TOTAL :			199	6	0	205	22	15	0	37	6	9	3	18		

LINTASAN RESOURCES SDN. BHD.
 MAINTENANCE OF FEDERAL ROADS - WEST COAST, SABAH
R05 CULVERT CLEARING RECORD

DISTRICT: TUARAN
ROUTE NO: 01
ROAD NAME: JALAN KOTA KINABALU - KUDAT
MONTH: OCTOBER 2006

Item	Chainage	Culvert No.	Single Cell				Twin Cell				Multi Cell				Date of Clearing	REMARKS
			RCP (No.)	BC (No.)	CMP (No.)	Total (No.)	RCP (No.)	BC (No.)	CMP (No.)	Total (No.)	RCP (No.)	BC (No.)	CMP (No.)	Total (No.)		
BROUGHT FORWARD:			150	12	4	166	3	1	0	4	0	0	0	0		
TOTAL :			150	12	4	166	3	1	0	4	0	0	0	0		

LINTASAN RESOURCES SDN. BHD.
MAINTENANCE OF FEDERAL ROADS - WEST COAST, SABAH
R05 CULVERT CLEARING RECORD

DISTRICT: TUARAN

ROUTE NO: 22

ROAD NAME: JALAN KOTA KINABALU - SANDAKAN

MONTH: OCTOBER 2006

Item	Chainage	Culvert No.	Single Cell				Twin Cell				Multi Cell				Date of Clearing	REMARKS
			RCP (No.)	BC (No.)	CMP (No.)	Total (No.)	RCP (No.)	BC (No.)	CMP (No.)	Total (No.)	RCP (No.)	BC (No.)	CMP (No.)	Total (No.)		
BROUGHT FORWARD:			77	2	20	99	2	0	2	4	0	0	0	0		
1	14.620	A4/015.220	1			1									03/10/2006	
2	15.251	A4/015.850	1			1									03/10/2006	
3	15.332	A4/015.980	1			1									03/10/2006	
4	15.600		1			1									03/10/2006	
5	15.742	A4/016.340	1			1									03/10/2006	
6	15.816	A4/016.420	1			1									03/10/2006	
7	16.790	A4/017.290	1			1									03/10/2006	
8	16.870		1			1									03/10/2006	
9	17.180	A4/017.780	1			1									03/10/2006	
10	17.567	A4/018.190	1			1									06/10/2006	
11	17.734	A4/018.330	1			1									06/10/2006	
12	17.967	A4/018.570	1			1									06/10/2006	
13	20.538	A4/021.140	1			1									09/10/2006	
14	20.992		1			1									12/10/2006	
15	21.451		1			1									12/10/2006	
CARRIED FORWARD :			92	2	20	114	2	0	2	4	0	0	0	0		

LINTASAN RESOURCES SDN. BHD.
MAINTENANCE OF FEDERAL ROADS - WEST COAST, SABAH
R05 CULVERT CLEARING RECORD

DISTRICT: TUARAN
ROUTE NO: 22
ROAD NAME: JALAN KOTA KINABALU - SANDAKAN
MONTH: OCTOBER 2006

Item	Chainage	Culvert No.	Single Cell				Twin Cell				Multi Cell				Date of Clearing	REMARKS
			RCP (No.)	BC (No.)	CMP (No.)	Total (No.)	RCP (No.)	BC (No.)	CMP (No.)	Total (No.)	RCP (No.)	BC (No.)	CMP (No.)	Total (No.)		
BROUGHT FORWARD:			92	2	20	114	2	0	2	4	0	0	0	0		
16	21.817	A4/022.420	1			1									12/10/2006	
17	22.051	A4/022.650	1			1									12/10/2006	
18	22.142	A4/022.750	1			1									16/10/2006	
19	22.533	A4/023.130	1			1									16/10/2006	
20	22.870	A4/023.480					1		1						16/10/2006	
21	23.356	A4/012.960	1			1									16/10/2006	
22	23.424		1			1									16/10/2006	
23	23.474	A4/024.080	1			1									16/10/2006	
24	23.660	A4/024.270	1			1									16/10/2006	
25	23.918	A4/024.530					1		1						16/10/2006	
26	23.964	A4/024.570	1			1									16/10/2006	
27	24.071	A4/024.680	1			1									19/10/2006	
28	24.413	A4/025.010	1			1									19/10/2006	
29	25.034	A4/025.640	1			1									19/10/2006	
30	25.780	A4/026.380	1			1									23/10/2006	
CARRIED FORWARD :			105	2	20	127	4	0	2	6	0	0	0	0		

LINTASAN RESOURCES SDN. BHD.
 MAINTENANCE OF FEDERAL ROADS - WEST COAST, SABAH
R05 CULVERT CLEARING RECORD

DISTRICT: TUARAN
ROUTE NO: 22
ROAD NAME: JALAN KOTA KINABALU - SANDAKAN
MONTH: OCTOBER 2006

Item	Chainage	Culvert No.	Single Cell				Twin Cell				Multi Cell				Date of Clearing	REMARKS
			RCP (No.)	BC (No.)	CMP (No.)	Total (No.)	RCP (No.)	BC (No.)	CMP (No.)	Total (No.)	RCP (No.)	BC (No.)	CMP (No.)	Total (No.)		
BROUGHT FORWARD:			105	2	20	127	4	0	2	6	0	0	0	0		
31	26.536		1			1									23/10/2006	
32	26.681	A4/027.280	1			1									23/10/2006	
33	26.932	A4/027.520	1			1									23/10/2006	
34	27.425	A4/028.030	1			1									23/10/2006	
35	28.643	A4/029.240	1			1									26/10/2006	
TOTAL :			110	2	20	132	4	0	2	6	0	0	0	0		

LINTASAN RESOURCES SDN. BHD.
 MAINTENANCE OF FEDERAL ROADS - WEST COAST, SABAH
R05 CULVERT CLEARING RECORD

DISTRICT: TUARAN
ROUTE NO: 503
ROAD NAME: JALAN BERUNGIS - KOTA BELUD
MONTH: OCTOBER 2006

Item	Chainage	Culvert No.	Single Cell				Twin Cell				Multi Cell				Date of Clearing	REMARKS
			RCP (No.)	BC (No.)	CMP (No.)	Total (No.)	RCP (No.)	BC (No.)	CMP (No.)	Total (No.)	RCP (No.)	BC (No.)	CMP (No.)	Total (No.)		
BROUGHT FORWARD:			137	2	0	139	0	6	0	6	1	3	0	4		
TOTAL :			137	2	0	139	0	6	0	6	1	3	0	4		

LINTASAN RESOURCES SDN. BHD.
MAINTENANCE OF FEDERAL ROADS - WEST COAST, SABAH
R05 CULVERT CLEARING RECORD

DISTRICT: KOTA KINABALU
ROUTE NO: 606
ROAD NAME: JALAN SUSUR SEPANGAR BAY
MONTH: OCTOBER 2006

Item	Chainage	Culvert No.	Single Cell				Twin Cell				Multi Cell				Date of Clearing	REMARKS
			RCP (No.)	BC (No.)	CMP (No.)	Total (No.)	RCP (No.)	BC (No.)	CMP (No.)	Total (No.)	RCP (No.)	BC (No.)	CMP (No.)	Total (No.)		
BROUGHT FORWARD:			66	3	0	69	6	0	0	6	1	0	0	1		
1	0.020		1			1			0					23/10/2006		
2	0.021		1			1								23/10/2006		
3	0.251		1			1								23/10/2006		
4	0.495		1			1								23/10/2006		
5	0.658		1			1								23/10/2006		
6	0.677			1		1								23/10/2006		
7	1.065		1			1								26/10/2006		
8	1.373		1			1								26/10/2006		
9	1.565		1			1								26/10/2006		
10	1.600		1			1								26/10/2006		
11	1.573		1			1								26/10/2006		
12	1.600		1			1								26/10/2006		
13	1.656		1			1								28/10/2006		
14	2.085		1			1								28/10/2006		
15	2.389						1		1					28/10/2006		
TOTAL :			79	4	0	83	7	0	0	7	1	0	0	1		

LINTASAN RESOURCES SDN. BHD.
MAINTENANCE OF FEDERAL ROADS - WEST COAST, SABAH
R05 CULVERT CLEARING RECORD

DISTRICT: KOTA KINABALU

ROUTE NO: 607

ROAD NAME: JALAN MASUK KE PELABUHAN BARU, KK

MONTH: OCTOBER 2006

Item	Chainage	Culvert No.	Single Cell				Twin Cell				Multi Cell				Date of Clearing	REMARKS
			RCP (No.)	BC (No.)	CMP (No.)	Total (No.)	RCP (No.)	BC (No.)	CMP (No.)	Total (No.)	RCP (No.)	BC (No.)	CMP (No.)	Total (No.)		
BROUGHT FORWARD:			0	3	0	3	0	0	0	0	0	0	0	0		
1	0.023			1		1									03/10/2006	
2	0.192			1		1									03/10/2006	
3	0.221			1		1									06/10/2006	
TOTAL :			0	6	0	6	0	0	0	0	0	0	0	0		

LINTASAN RESOURCES SDN. BHD.
 PRIVATISATION OF WEST COAST SABAH FEDERAL ROADS MAINTENANCE

SUMMARY - CULVERT CLEARING

MONTH: OCTOBER 2006

ITEM	DISTRICT	ROUTE NO	ROAD NAME	Single Cell			Twin Cell			3 / 4 / 5 / 6-Cell		
				Previous	Current	Cumm.	Previous	Current	Cumm.	Previous	Current	Cumm.
				(No.)	(No.)	(No.)	(No.)	(No.)	(No.)	(No.)	(No.)	(No.)
1	Ranau	22	Jalan Kota Kinabalu - Sandakan	425	32	457	24	2	26	7	0	7
TOTAL :				425	32	457	24	2	26	7	0	7

LINTASAN RESOURCES SDN. BHD.
MAINTENANCE OF FEDERAL ROADS - WEST COAST, SABAH
R05 CULVERT CLEARING RECORD

DISTRICT: Ranau
ROUTE NO: 22
ROAD NAME: Jalan Kota Kinabalu - Sandakan
MONTH: October 2006

Item	Chainage	Culvert No.	Single Cell				Twin Cell				Multi Cell				Date of Clearing	REMARKS
			RCP (No.)	BC (No.)	CMP (No.)	Total (No.)	RCP (No.)	BC (No.)	CMP (No.)	Total (No.)	RCP (No.)	BC (No.)	CMP (No.)	Total (No.)		
BROUGHT FORWARD FROM SEPTEMBER 2006:			311	15	99	425	18	4	2	24	2	2	3	7		
1	55.955	A4.056.560	1			1			0				0	02/10/2006		
2	56.264	A4.056.940	1			1			0				0	02/10/2006		
3	55.556	-	1			1			0				0	03/10/2006		
4	56.701	A4.057.000	1			1			0				0	03/10/2006		
5	57.630	-	1			1			0				0	03/10/2006		
6	57.685	-	1			1			0				0	04/10/2006		
7	57.837	-	1			1			0				0	04/10/2006		
8	58.013	-	1			1			0				0	05/10/2006		
9	58.227	A4.058.830	1			1			0				0	05/10/2006		
10	58.781	A4.059.380	1			1			0				0	06/10/2006		
11	59.115	A4.059.680	1			1			0				0	06/10/2006		
12	59.426	-		1		1			0				0	09/10/2006		
13	59.876	A4.060.480	1			1			0				0	10/10/2006		
14	60.168	A4.060.780	1			1			0				0	10/10/2006		
15	60.438	-	1			1			0				0	11/10/2006		
CARRIED FORWARD :			325	16	99	440	18	4	2	24	2	2	3	7		

LINTASAN RESOURCES SDN. BHD.
MAINTENANCE OF FEDERAL ROADS - WEST COAST, SABAH
R05 CULVERT CLEARING RECORD

DISTRICT: Ranau
ROUTE NO: 22
ROAD NAME: Jalan Kota Kinabalu - Sandakan
MONTH: October 2006

Item	Chainage	Culvert No.	Single Cell				Twin Cell				Multi Cell				Date of Clearing	REMARKS
			RCP (No.)	BC (No.)	CMP (No.)	Total (No.)	RCP (No.)	BC (No.)	CMP (No.)	Total (No.)	RCP (No.)	BC (No.)	CMP (No.)	Total (No.)		
BROUGHT FORWARD:			325	16	99	440	18	4	2	24	2	2	3	7		
16	60.804	A4.061.410	1			1			0				0	12/10/2006		
17	60.830	-	1			1			0				0	12/10/2006		
18	61.073	-	1			1			0				0	13/10/2006		
19	61.342	-	1			1			0				0	13/10/2006		
20	61.372	A4.061.970				0	1		1				0	14/10/2006		
21	62.260	A4.062.840	1			1			0				0	16/10/2006		
22	62.458	A4.063.060	1			1			0				0	16/10/2006		
23	62.810	A4.063.410	1			1			0				0	17/10/2006		
24	62.976	A4.063.590	1			1			0				0	18/10/2006		
25	63.096	-	1			1			0				0	18/10/2006		
26	63.327	A4.063.970	1			1			0				0	19/10/2006		
27	64.990	A4.065.590	1			1			0				0	19/10/2006		
28	65.043	A4.065.640	1			1			0				0	20/10/2006		
29	65.372	A4.065.970	1			1			0				0	23/10/2006		
30	65.903	A4.066.500	1			1			0				0	23/10/2006		
CARRIED FORWARD :			339	16	99	454	19	4	2	25	2	2	3	7		

LINTASAN RESOURCES SDN. BHD.
MAINTENANCE OF FEDERAL ROADS - WEST COAST, SABAH
R05 CULVERT CLEARING RECORD

DISTRICT: Ranau

ROUTE NO: 22

ROAD NAME: Jalan Kota Kinabalu - Sandakan

MONTH: October 2006

Item	Chainage	Culvert No.	Single Cell				Twin Cell				Multi Cell				Date of Clearing	REMARKS
			RCP (No.)	BC (No.)	CMP (No.)	Total (No.)	RCP (No.)	BC (No.)	CMP (No.)	Total (No.)	RCP (No.)	BC (No.)	CMP (No.)	Total (No.)		
BROUGHT FORWARD:			339	16	99	454	19	4	2	25	2	2	3	7		
31	66.110	A4.066.710	1			1			0				0	26/10/2006		
32	66.702	A4.067.300				0	1		1				0	26/10/2006		
33	67.020	A4.067.620	1			1			0				0	27/10/2006		
34	68.081	A4.068.680	1			1			0				0	27/10/2006		
35																
36																
37																
38																
39																
40																
41																
42																
43																
44																
45																
CARRIED FORWARD :			342	16	99	457	20	4	2	26	2	2	3	7		

LINTASAN RESOURCES SDN. BHD.
PRIVATISATION OF WEST COAST SABAH FEDERAL ROADS MAINTENANCE

SUMMARY - CULVERT CLEARING

Month : OCTOBER 2006

ITEM	DISTRICT	ROUTE NO	ROAD NAME	Single Cell			Twin Cell			Multi Cell		
				Previous	Current	Cumm.	Previous	Current	Cumm.	Previous	Current	Cumm.
				(No.)	(No.)	(No.)	(No.)	(No.)	(No.)	(No.)	(No.)	(No.)
1	Kota Kinabalu	01	Jalan Kota Kinabalu - Sindumin	40	-	40	14	-	14	-	-	-
2	Penampang	01	Jalan Kota Kinabalu - Sindumin	49	-	49	-	-	-	8	-	8
3	Papar	01	Jalan Kota Kinabalu - Sindumin	174	39	213	98	4	102	28	-	28
4	Penampang	500	Jalan Kota Kinabalu - Keningau - Tenom	123	-	123	5	-	5	-	-	-
5	Kota Kinabalu	501	Jalan Kota Kinabalu - Penampang - Lok Kawi	4	-	4	4	-	4	-	-	-
6	Penampang	501	Jalan Kota Kinabalu - Penampang - Lok Kawi	58	-	58	3	-	3	-	-	-
7	Kota Kinabalu	608	Jalan Masuk Ke Lapangan Terbang Lama, KK	9	-	9	3	-	3	-	-	-
TOTAL :				457	39	496	127	4	131	36	-	36

LINTASAN RESOURCES SDN. BHD.
 MAINTENANCE OF FEDERAL ROADS - WEST COAST, SABAH
R05 CULVERT CLEARING RECORD

DISTRICT: KOTA KINABALU
 ROUTE NO: 01
 ROAD NAME: JALAN KOTA KINABALU-SINDUMIN
 MONTH: OCTOBER 2006

Item	Chainage	Culvert No.	Single Cell				Twin Cell				Multi Cell				Date of Clearing	REMARKS
			RCP (No.)	BC (No.)	CMP (No.)	Total (No.)	RCP (No.)	BC (No.)	CMP (No.)	Total (No.)	RCP (No.)	BC (No.)	CMP (No.)	Total (No.)		
BROUGHT FORWARD:			33	4	3	40	9	5	-	14	-	-	-	0		
						0								0		
						0								0		
						0								0		
						0								0		
						0								0		
						0								0		
						0								0		
						0								0		
						0								0		
						0								0		
						0								0		
						0								0		
						0								0		
						0								0		
						0								0		
TOTAL :			33	4	3	40	9	5	-	14	-	-	-	0		

LINTASAN RESOURCES SDN. BHD.
 MAINTENANCE OF FEDERAL ROADS - WEST COAST, SABAH
R05 CULVERT CLEARING RECORD

DISTRICT: PENAMPANG
 ROUTE NO: 01
 ROAD NAME: JALAN KOTA KINABALU-SINDUMIN
 MONTH: OCTOBER 2006

Item	Chainage	Culvert No.	Single Cell				Twin Cell				Multi Cell				Date of Clearing	REMARKS
			RCP (No.)	BC (No.)	CMP (No.)	Total (No.)	RCP (No.)	BC (No.)	CMP (No.)	Total (No.)	RCP (No.)	BC (No.)	CMP (No.)	Total (No.)		
BROUGHT FORWARD:			43	5	1	49	-	-	-	-	-	8	-	8		
						0				0				0		
						0				0				0		
						0				0				0		
						0				0				0		
						0				0				0		
						0				0				0		
						0				0				0		
						0				0				0		
						0				0				0		
						0				0				0		
						0				0				0		
						0				0				0		
						0				0				0		
						0				0				0		
						0				0				0		
TOTAL :			43	5	1	49	-	-	-	0	-	8	-	8		

LINTASAN RESOURCES SDN. BHD.
MAINTENANCE OF FEDERAL ROADS - WEST COAST, SABAH
R05 CULVERT CLEARING RECORD

DISTRICT: PAPAR
ROUTE NO: 01
ROAD NAME: JALAN KOTA KINABALU-SINDUMIN
MONTH: OCTOBER 2006

Item	Chainage	Culvert No.	Single Cell				Twin Cell				Multi Cell				Date of Clearing	REMARKS
			RCP (No.)	BC (No.)	CMP (No.)	Total (No.)	RCP (No.)	BC (No.)	CMP (No.)	Total (No.)	RCP (No.)	BC (No.)	CMP (No.)	Total (No.)		
BROUGHT FORWARD:			98	34	42	174	63	33	2	98	-	28	-	28		
1	28.961	C95			1	1			0					0	02/10/2006	1st cycle for Normal Road
2	28.720	C94				0	1		1					0	02, 03/10/06	1st cycle for Normal Road
3	28.555	C93			1	1			0					0	04/10/2006	1st cycle for Normal Road
4	28.380	C92			1	1			0					0	05/10/2006	1st cycle for Normal Road
5	28.001	C91	1			1			0					0	06/10/2006	1st cycle for Normal Road
6	27.862	C90			1	1			0					0	06/10/2006	1st cycle for Normal Road
7	27.773	C89			1	1			0					0	07/10/2006	1st cycle for Normal Road
8	27.725	C88			1	1			0					0	07/10/2006	1st cycle for Normal Road
9	27.530	C87			1	1			0					0	09/10/2006	1st cycle for Normal Road
10	27.280	C86			1	1			0					0	09/10/2006	1st cycle for Normal Road
11	26.902	C85			1	1			0					0	10/10/2006	1st cycle for Normal Road
12	25.884	C84			1	1			0					0	11/10/2006	1st cycle for Normal Road
13	25.690	C83			1	1			0					0	12/10/2006	1st cycle for Normal Road
14	25.542	C82			1	1			0					0	12/10/2006	1st cycle for Normal Road
15	24.832	C81	1			1			0					0	13/10/2006	1st cycle for Normal Road
CARRIED FORWARD:			100	34	54	188	64	33	2	99	-	28	-	28		

LINTASAN RESOURCES SDN. BHD.
MAINTENANCE OF FEDERAL ROADS - WEST COAST, SABAH
R05 CULVERT CLEARING RECORD

DISTRICT: PAPAR
ROUTE NO: 01
ROAD NAME: JALAN KOTA KINABALU-SINDUMIN
MONTH: OCTOBER 2006

Item	Chainage	Culvert No.	Single Cell				Twin Cell				Multi Cell				Date of Clearing	REMARKS
			RCP (No.)	BC (No.)	CMP (No.)	Total (No.)	RCP (No.)	BC (No.)	CMP (No.)	Total (No.)	RCP (No.)	BC (No.)	CMP (No.)	Total (No.)		
BROUGHT FORWARD:			100	34	54	188	64	33	2	99	-	28	-	28		
16	24.510	C80	1			1			0					0	13/10/2006	1st cycle for Normal Road
17	24.360	C79			1	1			0					0	15/10/2006	1st cycle for Normal Road
18	24.250	C78	1			1			0					0	15/10/2006	1st cycle for Normal Road
19	23.840	C77				0	1		1					0	16,17/10/06	1st cycle for Normal Road
20	23.435	C76	1			1			0					0	17/10/2006	1st cycle for Normal Road
21	23.295	C75	1			1			0					0	17/10/2006	1st cycle for Normal Road
22	23.119	C74	1			1			0					0	18/10/2006	1st cycle for Normal Road
23	22.985	C73			1	1			0					0	18/10/2006	1st cycle for Normal Road
24	22.824	C72			1	1			0					0	19/10/2006	1st cycle for Normal Road
25	22.485	C71			1	1			0					0	20, 21/10/06	1st cycle for Normal Road
26	22.285	C70	1			1			0					0	21/10/2006	1st cycle for Normal Road
27	21.953	C69			1	1			0					0	21/10/2006	1st cycle for Normal Road
28	21.801	C68	1			1			0					0	23/10/2006	1st cycle for Normal Road
29	21.453	C67	1			1			0					0	23/10/2006	1st cycle for Normal Road
30	21.401	C66	1			1			0					0	23/10/2006	1st cycle for Normal Road
CARRIED FORWARD:			109	34	59	202	65	33	2	100	-	28	-	28		

LINTASAN RESOURCES SDN. BHD.
MAINTENANCE OF FEDERAL ROADS - WEST COAST, SABAH
R05 CULVERT CLEARING RECORD

DISTRICT: PAPAR
ROUTE NO: 01
ROAD NAME: JALAN KOTA KINABALU-SINDUMIN
MONTH: OCTOBER 2006

Item	Chainage	Culvert No.	Single Cell				Twin Cell				Multi Cell				Date of Clearing	REMARKS
			RCP (No.)	BC (No.)	CMP (No.)	Total (No.)	RCP (No.)	BC (No.)	CMP (No.)	Total (No.)	RCP (No.)	BC (No.)	CMP (No.)	Total (No.)		
BROUGHT FORWARD:			109	34	59	202	65	33	2	100	-	28	-	28		
31	21.218	C65	1			1			0				0	26/10/2006	1st cycle for Normal Road	
32	20.990	C64			1	1			0				0	26/10/2006	1st cycle for Normal Road	
33	20.730	C63				0	1		1				0	27/10/2006	1st cycle for Normal Road	
34	20.479	C62	1			1			0				0	27/10/2006	1st cycle for Normal Road	
35	20.280	C61	1			1			0				0	27/10/2006	1st cycle for Normal Road	
36	19.986	C60	1			1			0				0	28/10/2006	1st cycle for Normal Road	
37	19.610	C59			1	1			0				0	28/10/2006	1st cycle for Normal Road	
38	19.370	C58				0		1	1				0	29/10/2006	1st cycle for Normal Road	
39	19.223	C57	1			1			0				0	29/10/2006	1st cycle for Normal Road	
40	19.027	C56	1			1			0				0	29/10/2006	1st cycle for Normal Road	
41	18.912	C55			1	1			0				0	30/10/2006	1st cycle for Normal Road	
42	18.057	C54	1			1			0				0	30/10/2006	1st cycle for Normal Road	
43	17.818	C53		1		1			0				0	30/10/2006	1st cycle for Normal Road	
TOTAL :			116	35	62	213	66	34	2	102	-	28	-	28		

LINTASAN RESOURCES SDN. BHD.
 MAINTENANCE OF FEDERAL ROADS - WEST COAST, SABAH
R05 CULVERT CLEARING RECORD

DISTRICT: PENAMPANG
 ROUTE NO: 500
 ROAD NAME: JALAN KK-KENINGAU-TENOM
 MONTH: OCTOBER 2006

Item	Chainage	Culvert No.	Single Cell				Twin Cell				Multi Cell				Date of Clearing	REMARKS
			RCP (No.)	BC (No.)	CMP (No.)	Total (No.)	RCP (No.)	BC (No.)	CMP (No.)	Total (No.)	RCP (No.)	BC (No.)	CMP (No.)	Total (No.)		
BROUGHT FORWARD:			60	7	56	123	4	-	1	5	-	-	-	0		
						0								0		
						0								0		
						0								0		
						0								0		
						0								0		
						0								0		
						0								0		
						0								0		
						0								0		
						0								0		
						0								0		
						0								0		
						0								0		
						0								0		
TOTAL :			60	7	56	123	4	-	1	5	-	-	-	0		

LINTASAN RESOURCES SDN. BHD.
 MAINTENANCE OF FEDERAL ROADS - WEST COAST, SABAH
R05 CULVERT CLEARING RECORD

DISTRICT: KOTA KINABALU
 ROUTE NO: 501
 ROAD NAME: JALAN KK-PENAMPANG-LOK KAWI
 MONTH: OCTOBER 2006

Item	Chainage	Culvert No.	Single Cell				Twin Cell				Multi Cell				Date of Clearing	REMARKS
			RCP (No.)	BC (No.)	CMP (No.)	Total (No.)	RCP (No.)	BC (No.)	CMP (No.)	Total (No.)	RCP (No.)	BC (No.)	CMP (No.)	Total (No.)		
BROUGHT FORWARD:			2	2	-	4	2	2	-	4	-	-	-	0		
						0				0				0		
						0				0				0		
						0				0				0		
						0				0				0		
						0				0				0		
						0				0				0		
						0				0				0		
						0				0				0		
						0				0				0		
						0				0				0		
						0				0				0		
						0				0				0		
						0				0				0		
						0				0				0		
						0				0				0		
TOTAL :			2	2	-	4	-	-	-	4	-	-	-	0		

LINTASAN RESOURCES SDN. BHD.
 MAINTENANCE OF FEDERAL ROADS - WEST COAST, SABAH
R05 CULVERT CLEARING RECORD

DISTRICT: PENAMPANG
 ROUTE NO: 501
 ROAD NAME: JALAN KK-PENAMPANG-LOK KAWI
 MONTH: OCTOBER 2006

Item	Chainage	Culvert No.	Single Cell				Twin Cell				Multi Cell				Date of Clearing	REMARKS
			RCP (No.)	BC (No.)	CMP (No.)	Total (No.)	RCP (No.)	BC (No.)	CMP (No.)	Total (No.)	RCP (No.)	BC (No.)	CMP (No.)	Total (No.)		
BROUGHT FORWARD:			42	7	9	58	2	1	-	3	-	-	-	0		
						0				0				0		
						0				0				0		
						0				0				0		
						0				0				0		
						0				0				0		
						0				0				0		
						0				0				0		
						0				0				0		
						0				0				0		
						0				0				0		
						0				0				0		
						0				0				0		
						0				0				0		
						0				0				0		
						0				0				0		
						0				0				0		
						0				0				0		
						0				0				0		
TOTAL :			42	7	9	58	2	1	-	3	-	-	-	0		

LINTASAN RESOURCES SDN. BHD.
 MAINTENANCE OF FEDERAL ROADS - WEST COAST, SABAH
R05 CULVERT CLEARING RECORD

DISTRICT: KOTA KINABALU
 ROUTE NO: 608
 ROAD NAME: JLN MASUK KE LAPANGAN TERBANG LAMA
 MONTH: OCTOBER 2006

Item	Chainage	Culvert No.	Single Cell				Twin Cell				Multi Cell				Date of Clearing	REMARKS
			RCP (No.)	BC (No.)	CMP (No.)	Total (No.)	RCP (No.)	BC (No.)	CMP (No.)	Total (No.)	RCP (No.)	BC (No.)	CMP (No.)	Total (No.)		
BROUGHT FORWARD:			9	-	-	9	3	-	-	3	-	-	-	-		
						0				0						
						0				0						
						0				0						
						0				0						
						0				0						
						0				0						
						0				0						
						0				0						
						0				0						
						0				0						
						0				0						
						0				0						
						0				0						
						0				0						
						0				0						
TOTAL :			9	-	-	9	3	-	-	3	-	-	-	0		

LINTASAN RESOURCES SDN. BHD.
PRIVATISATION OF WEST COAST SABAH FEDERAL ROADS MAINTENANCE

SUMMARY - CULVERT CLEARING

Month : OCTOBER 2006

ITEM	DISTRICT	ROUTE NO	ROAD NAME	Single Cell			Twin Cell			Multi Cell		
				Previous	Current	Cumm.	Previous	Current	Cumm.	Previous	Current	Cumm.
				(No.)	(No.)	(No.)	(No.)	(No.)	(No.)	(No.)	(No.)	(No.)
1	Tambunan	500	Jalan Kota Kinabalu - Keningau - Tenom	328	-	328	28	-	28	10	-	10
2	Keningau	500	Jalan Kota Kinabalu - Keningau - Tenom	141	28	169	18	2	20	4	1	5
3	Tenom	500	Jalan Kota Kinabalu - Keningau - Tenom	74	9	83	17	1	18	9	-	9
TOTAL :				543	37	580	63	3	66	23	1	24

LINTASAN RESOURCES SDN. BHD.
MAINTENANCE OF FEDERAL ROADS - WEST COAST, SABAH
R05 CULVERT CLEARING RECORD

DISTRICT: TAMBUNAN
ROUTE NO: 500
ROAD NAME: JLN KOTA KINABALU - KENINGAU - TENOM
MONTH: OCTOBER 2006

Item	Chainage	Culvert No.	Single Cell				Twin Cell				Multi Cell				Date of Clearing	REMARKS
			RCP (No.)	BC (No.)	CMP (No.)	Total (No.)	RCP (No.)	BC (No.)	CMP (No.)	Total (No.)	RCP (No.)	BC (No.)	CMP (No.)	Total (No.)		
BROUGHT FORWARD:			161	19	148	328	12	5	11	28	0	8	2	10		
1						0				0				0		
2						0				0				0		
3						0				0				0		
4						0				0				0		
5						0				0				0		
6						0				0				0		
7						0				0				0		
8						0				0				0		
9						0				0				0		
10						0				0				0		
11						0				0				0		
12						0				0				0		
13						0				0				0		
14						0				0				0		
15						0				0				0		
TOTAL :			161	19	148	328	12	5	11	28	0	8	2	10		

LINTASAN RESOURCES SDN. BHD.
MAINTENANCE OF FEDERAL ROADS - WEST COAST, SABAH
R05 CULVERT CLEARING RECORD

DISTRICT: KENINGAU
ROUTE NO: 500
ROAD NAME: JLN KOTA KINABALU - KENINGAU - TENOM
MONTH: OCTOBER 2006

Item	Chainage	Culvert No.	Single Cell				Twin Cell				Multi Cell				Date of Clearing	REMARKS
			RCP (No.)	BC (No.)	CMP (No.)	Total (No.)	RCP (No.)	BC (No.)	CMP (No.)	Total (No.)	RCP (No.)	BC (No.)	CMP (No.)	Total (No.)		
BROUGHT FORWARD:			57	33	51	141	6	8	4	18	4	0	0	4		
1	138.000	KGU 106	1			1			0				0	11.10.06	1st cycle Normal Road	
2	137.950	KGU 105	1			1			0				0	11.10.06	1st cycle Normal Road	
3	135.850	KGU 103A	1			1			0				0	12.10.06	1st cycle Normal Road	
4	135.700	KGU 103	1			1			0				0	12.10.06	1st cycle Normal Road	
5	135.250	KGU 102	1			1			0				0	12.10.06	1st cycle Normal Road	
6	133.500	KGU 101A	1			1			0				0	13.10.06	1st cycle Normal Road	
7	137.500	KGU 104	1			1			0				0	14.10.06	1st cycle Normal Road	
8	131.050	KGU 99			1	1			0				0	16.10.06	1st cycle Normal Road	
9	130.700	KGU 98			1	1			0				0	16.10.06	1st cycle Normal Road	
10	130.450	KGU 97			1	1			0				0	16.10.06	1st cycle Normal Road	
11	130.350	KGU 96			1	1			0				0	16.10.06	1st cycle Normal Road	
12	130.100	KGU 95A			1	1			0				0	16.10.06	1st cycle Normal Road	
13	132.950	KGU 101				0	1		1				0	17.10.06	1st cycle Normal Road	
14	132.280	KGU 100A	1			1			0				0	17.10.06	1st cycle Normal Road	
15	131.250	KGU 100			1	1			0				0	18.10.06	1st cycle Normal Road	
CARRIED FORWARD :			65	33	57	155	7	8	4	19	4	0	0	4		

LINTASAN RESOURCES SDN. BHD.
MAINTENANCE OF FEDERAL ROADS - WEST COAST, SABAH
R05 CULVERT CLEARING RECORD

DISTRICT: KENINGAU
ROUTE NO: 500
ROAD NAME: JLN KOTA KINABALU - KENINGAU - TENOM
MONTH: OCTOBER 2006

Item	Chainage	Culvert No.	Single Cell				Twin Cell				Multi Cell				Date of Clearing	REMARKS
			RCP (No.)	BC (No.)	CMP (No.)	Total (No.)	RCP (No.)	BC (No.)	CMP (No.)	Total (No.)	RCP (No.)	BC (No.)	CMP (No.)	Total (No.)		
BROUGHT FORWARD:			65	33	57	155	7	8	4	19	4	0	0	4		
16	129.900	KGU 95				0	1		1				0	19.10.06	1st cycle Normal Road	
17	129.600	KGU 94A	1			1			0				0	19.10.06	1st cycle Normal Road	
18	129.400	KGU 94	1			1			0				0	19.10.06	1st cycle Normal Road	
19	128.000	KGU 93		1		1			0				0	19.10.06	1st cycle Normal Road	
20	127.900	KGU 92	1			1			0				0	27.10.06	1st cycle Normal Road	
21	125.800	KGU 91	1			1			0				0	27.10.06	1st cycle Normal Road	
22	125.600	KGU 90			1	1			0				0	27.10.06	1st cycle Normal Road	
23	124.900	KGU 89	1			1			0				0	27.10.06	1st cycle Normal Road	
24	123.800	KGU 87			1	1			0				0	28.10.06	1st cycle Normal Road	
25	123.450	KGU 86	1			1			0				0	28.10.06	1st cycle Normal Road	
26	123.250	KGU 85			1	1			0				0	28.10.06	1st cycle Normal Road	
27	122.950	KGU 84	1			1			0				0	29.10.06	1st cycle Normal Road	
28	122.600	KGU 83			1	1			0				0	29.10.06	1st cycle Normal Road	
29	122.600	KGU 82	1			1			0				0	29.10.06	1st cycle Normal Road	
30	122.550	KGU 81A	1			1			0				0	29.10.06	1st cycle Normal Road	
CARRIED FORWARD :			74	34	61	169	8	8	4	20	4	0	0	4		

LINTASAN RESOURCES SDN. BHD.
MAINTENANCE OF FEDERAL ROADS - WEST COAST, SABAH
R05 CULVERT CLEARING RECORD

DISTRICT: KENINGAU
ROUTE NO: 500
ROAD NAME: JLN KOTA KINABALU - KENINGAU - TENOM
MONTH: OCTOBER 2006

Item	Chainage	Culvert No.	Single Cell				Twin Cell				Multi Cell				Date of Clearing	REMARKS
			RCP (No.)	BC (No.)	CMP (No.)	Total (No.)	RCP (No.)	BC (No.)	CMP (No.)	Total (No.)	RCP (No.)	BC (No.)	CMP (No.)	Total (No.)		
BROUGHT FORWARD:			74	34	61	169	8	8	4	20	4	0	0	4		
31	124.050	KGU 88				0			0	1			1	30.10.06	1st cycle Normal Road	
						0			0				0			
						0			0				0			
						0			0				0			
						0			0				0			
						0			0				0			
						0			0				0			
						0			0				0			
						0			0				0			
						0			0				0			
						0			0				0			
						0			0				0			
						0			0				0			
						0			0				0			
						0			0				0			
TOTAL :			74	34	61	169	8	8	4	20	5	0	0	5		

LINTASAN RESOURCES SDN. BHD.
MAINTENANCE OF FEDERAL ROADS - WEST COAST, SABAH
R05 CULVERT CLEARING RECORD

DISTRICT: TENOM
ROUTE NO: 500
ROAD NAME: JLN KOTA KINABALU - KENINGAU - TENOM
MONTH: OCTOBER 2006

Item	Chainage	Culvert No.	Single Cell				Twin Cell				Multi Cell				Date of Clearing	REMARKS
			RCP (No.)	BC (No.)	CMP (No.)	Total (No.)	RCP (No.)	BC (No.)	CMP (No.)	Total (No.)	RCP (No.)	BC (No.)	CMP (No.)	Total (No.)		
BROUGHT FORWARD:			31	34	9	74	8	9	0	17	0	9	0	9		
1	146.700	TNM 10				0		1	1				0	02.10.06	1st cycle Normal Road	
2	144.820	TNM 8		1		1			0				0	03.10.06	1st cycle Normal Road	
3	144.450	TNM 7		1		1			0				0	03.10.06	1st cycle Normal Road	
4	143.600	TNM 6		1		1			0				0	04.10.06	1st cycle Normal Road	
5	143.150	TNM 5	1			1			0				0	04.10.06	1st cycle Normal Road	
6	142.500	TNM 4		1		1			0				0	04.10.06	1st cycle Normal Road	
7	141.100	TNM 3	1			1			0				0	05.10.06	1st cycle Normal Road	
8	141.000	TNM 2	1			1			0				0	05.10.06	1st cycle Normal Road	
9	145.550	TNM 9		1		1			0				0	06.10.06	1st cycle Normal Road	
10	139.350	TNM 1		1		1			0				0	10.10.06	1st cycle Normal Road	
TOTAL :			34	40	9	83	8	10	0	18	0	9	0	9		

LINTASAN RESOURCES SDN. BHD.
PRIVATISATION OF WEST COAST SABAH FEDERAL ROADS MAINTENANCE

SUMMARY - CULVERT CLEARING

Month : OCTOBER 2006

ITEM	DISTRICT	ROUTE NO	ROAD NAME	Single Cell			Twin Cell			Multi Cell		
				Previous	Current	Cumm.	Previous	Current	Cumm.	Previous	Current	Cumm.
				(No.)	(No.)	(No.)	(No.)	(No.)	(No.)	(No.)	(No.)	(No.)
1	Beaufort	01	Jalan Kota Kinabalu - Sindumin	164	32	196	83	7	90	49	11	60
2	Sipitang	01	Jalan Kota Kinabalu - Sindumin	73	-	73	19	-	19	3	-	3
3	Beaufort	502	Jalan Beaufort - Menumbok	52	-	52	6	-	6	-	-	-
4	Kuala Penyu	502	Jalan Beaufort - Menumbok	140	-	140	58	-	58	2	-	2
TOTAL :				429	32	461	166	7	173	54	11	65

LINTASAN RESOURCES SDN. BHD.
MAINTENANCE OF FEDERAL ROADS - WEST COAST, SABAH
R05 CULVERT CLEARING RECORD

DISTRICT: BEAUFORT

ROUTE NO: 01

ROAD NAME: JALAN KOTA KINABALU - SINDUMIN

MONTH: OCTOBER 2006

Item	Chainage	Culvert No.	Single Cell				Twin Cell				Multi Cell				Date of Clearing	REMARKS
			RCP (No.)	BC (No.)	CMP (No.)	Total (No.)	RCP (No.)	BC (No.)	CMP (No.)	Total (No.)	RCP (No.)	BC (No.)	CMP (No.)	Total (No.)		
BROUGHT FORWARD:			98	66		164	33	50		83	1	48		49		
1	101.656	111									1			1	02/10/2006	1st cycle for normal road
2	101.946	112						1	1						02/10/2006	1st cycle for normal road
3	102.186	113	1			1									02/10/2006	1st cycle for normal road
4	102.589	114	1			1									04/10/2006	1st cycle for normal road
5	102.757	115	1			1									04/10/2006	1st cycle for normal road
6	102.934	116									1		1	04/10/2006	1st cycle for normal road	
7	103.141	117									1		1	04/10/2006	1st cycle for normal road	
8	103.444	118	1			1								06/10/2006	1st cycle for normal road	
9	103.501	119						1	1					06/10/2006	1st cycle for normal road	
10	103.834	120									1		1	06/10/2006	1st cycle for normal road	
11	104.234	121						1	1					07/10/2006	1st cycle for normal road	
12	104.599	122		1		1								07/10/2006	1st cycle for normal road	
13	105.417	123		1		1								07/10/2006	1st cycle for normal road	
14	105.650	124		1		1								09/10/2006	1st cycle for normal road	
15	106.397	125									1		1	09/10/2006	1st cycle for normal road	
CARRIED FORWARD :			102	69	0	171	33	53	0	86	1	53	0	54		

LINTASAN RESOURCES SDN. BHD.
MAINTENANCE OF FEDERAL ROADS - WEST COAST, SABAH
R05 CULVERT CLEARING RECORD

DISTRICT: BEAUFORT

ROUTE NO: 01

ROAD NAME: JALAN KOTA KINABALU - SINDUMIN

MONTH: OCTOBER 2006

Item	Chainage	Culvert No.	Single Cell				Twin Cell				Multi Cell				Date of Clearing	REMARKS
			RCP (No.)	BC (No.)	CMP (No.)	Total (No.)	RCP (No.)	BC (No.)	CMP (No.)	Total (No.)	RCP (No.)	BC (No.)	CMP (No.)	Total (No.)		
BROUGHT FORWARD:			102	69		171	33	53		86	1	53		54		
16	106.782	126									1			1	09/10/2006	1st cycle for normal road
17	107.115	127									1			1	10/10/2006	1st cycle for normal road
18	107.525	128									1			1	10/10/2006	1st cycle for normal road
19	107.664	129									1			1	12/10/2006	1st cycle for normal road
20	108.009	130						1	1						12/10/2006	1st cycle for normal road
21	108.838	131		1		1									13/10/2006	1st cycle for normal road
22	109.157	132		1		1									13/10/2006	1st cycle for normal road
23	110.215	133									1			1	15/10/2006	1st cycle for normal road
24	111.494	134					1		1						15/10/2006	1st cycle for normal road
25	111.984	135		1		1									15/10/2006	1st cycle for normal road
26	112.227	136		1		1									15/10/2006	1st cycle for normal road
27	112.554	137		1		1									16/10/2006	1st cycle for normal road
28	112.647	138		1		1									16/10/2006	1st cycle for normal road
29	113.075	139		1		1									16/10/2006	1st cycle for normal road
30	113.200	140		1		1									17/10/2006	1st cycle for normal road
CARRIED FORWARD :			102	77	0	179	34	54	0	88	1	58	0	59		

LINTASAN RESOURCES SDN. BHD.
MAINTENANCE OF FEDERAL ROADS - WEST COAST, SABAH
R05 CULVERT CLEARING RECORD

DISTRICT: BEAUFORT

ROUTE NO: 01

ROAD NAME: JALAN KOTA KINABALU - SINDUMIN

MONTH: OCTOBER 2006

Item	Chainage	Culvert No.	Single Cell				Twin Cell				Multi Cell				Date of Clearing	REMARKS
			RCP (No.)	BC (No.)	CMP (No.)	Total (No.)	RCP (No.)	BC (No.)	CMP (No.)	Total (No.)	RCP (No.)	BC (No.)	CMP (No.)	Total (No.)		
BROUGHT FORWARD:			102	77		179	34	54		88	1	58		59		
31	113.530	141		1		1									17/10/2006	1st cycle for normal road
32	114.130	142		1		1									19/10/2006	1st cycle for normal road
33	114.490	143		1		1									19/10/2006	1st cycle for normal road
34	114.760	144		1		1									19/10/2006	1st cycle for normal road
35	114.907	145		1		1									19/10/2006	1st cycle for normal road
36	115.128	146		1		1									20/10/2006	1st cycle for normal road
37	115.363	147		1		1									20/10/2006	1st cycle for normal road
38	115.502	148		1		1									20/10/2006	1st cycle for normal road
39	115.879	149									1		1		21/10/2006	1st cycle for normal road
40	116.175	150		1		1									21/10/2006	1st cycle for normal road
41	116.502	151		1		1									21/10/2006	1st cycle for normal road
42	117.445	152		1		1									28/10/2006	1st cycle for normal road
43	117.758	153		1		1									28/10/2006	1st cycle for normal road
44	118.148	154						1	1						28/10/2006	1st cycle for normal road
45	118.299	155		1		1									28/10/2006	1st cycle for normal road
CARRIED FORWARD :			102	90	0	192	34	55	0	89	1	59	0	60		

LINTASAN RESOURCES SDN. BHD.
MAINTENANCE OF FEDERAL ROADS - WEST COAST, SABAH
R05 CULVERT CLEARING RECORD

DISTRICT: BEAUFORT

ROUTE NO: 01

ROAD NAME: JALAN KOTA KINABALU - SINDUMIN

MONTH: OCTOBER 2006

Item	Chainage	Culvert No.	Single Cell				Twin Cell				Multi Cell				Date of Clearing	REMARKS
			RCP (No.)	BC (No.)	CMP (No.)	Total (No.)	RCP (No.)	BC (No.)	CMP (No.)	Total (No.)	RCP (No.)	BC (No.)	CMP (No.)	Total (No.)		
BROUGHT FORWARD:			102	90		192	34	55		89	1	59		60		
46	119.222	156		1		1									29/10/2006	1st cycle for normal road
47	119.951	157						1	1						29/10/2006	1st cycle for normal road
48	120.768	158		1		1									29/10/2006	1st cycle for normal road
49	121.211	159		1		1									30/10/2006	1st cycle for normal road
50	121.349	160		1		1									30/10/2006	1st cycle for normal road
51																
52																
53																
54																
55																
56																
57																
58																
59																
60																
CARRIED FORWARD :			102	94	0	196	34	56	0	90	1	59	0	60		

LINTASAN RESOURCES SDN. BHD.
MAINTENANCE OF FEDERAL ROADS - WEST COAST, SABAH
R05 CULVERT CLEARING RECORD

DISTRICT: BEAUFORT

ROUTE NO: 502

ROAD NAME: JALAN BEAUFORT - MENUMBOK

MONTH: OCTOBER 2006

Item	Chainage	Culvert No.	Single Cell				Twin Cell				Multi Cell				Date of Clearing	REMARKS
			RCP (No.)	BC (No.)	CMP (No.)	Total (No.)	RCP (No.)	BC (No.)	CMP (No.)	Total (No.)	RCP (No.)	BC (No.)	CMP (No.)	Total (No.)		
BROUGHT FORWARD:			50	0	2	52	1	5	0	6	0	0	0	0		
1																
2																
3																
4																
5																
6																
7																
8																
9																
10																
11																
12																
13																
14																
15																
CARRIED FORWARD :			50	0	2	52	1	5	0	6	0	0	0	0		

DISTRICT : KOTA BELUD
ROUTE NO : 01 - JALAN KOTA KINABALU - KUDAT
LOCATION : CH84.730 (LUGUK)

R05 BRIDGES



BEFORE



IN PROGRESS



AFTER

DISTRICT : TENOM
ROUTE NO : 500 - JALAN KOTA KINABALU - KENINGAU - TENOM
LOCATION : CH 145.150 - Tepoh Bridge

R05 BRIDGES



BEFORE



IN PROGRESS



AFTER

LINTASAN RESOURCES SDN. BHD.
BRIDGES
GRAND SUMMARY

MONTH: OCTOBER 2006

DISTRICT	ROUTE NO.	ROAD NAME	General Cleaning			Painting		
			Previous	Current	Cumm.	Previous	Current	Cumm.
			(No.)	(No.)	(No.)	(No.)	(No.)	(No.)
Kota Belud	01	Jalan Kota Kinabalu-Kudat	13	2	15	0	2	2
Kota Marudu	01	Jalan Kota Kinabalu-Kudat	20	0	20	0	0	0
Kudat	01	Jalan Kota Kinabalu-Kudat	4	0	4	0	0	0
Tuaran	01	Jalan Kota Kinabalu-Kudat	7	0	7	0	0	0
	22	Jalan Kota Kinabalu-Sandakan	0	0	0	0	0	0
	503	Jalan Berungis-Kota Belud	4	0	4	0	0	0
Kota Kinabalu	01	Jalan Kota Kinabalu-Kudat	13	4	17	5	0	5
	01	Jalan Kota Kinabalu-Sindumin	0	0	0	0	0	0
	501	Jalan Kota Kinabalu-Penampang-Lok Kawi	6	0	6	3	0	3
	606	Jalan Susur Sepangar Bay	2	1	3	1	0	1
	607	Jalan Masuk Ke Pelabuhan Baru	0	0	0	0	0	0
	608	Jalan Masuk Ke Lapangan Terbang Lama	0	0	0	0	0	0
Penampang	01	Jalan Kota Kinabalu-Sindumin	8	0	8	0	0	0
	500	Jalan Kota Kinabalu-Keningau-Tenom	6	0	6	2	0	2
	501	Jalan Kota Kinabalu-Penampang-Lok Kawi	1	0	1	1	0	1
Papar	01	Jalan Kota Kinabalu-Sindumin	18	2	20	1	0	1
Ranau	22	Jalan Kota Kinabalu-Sandakan	12	0	12	12	0	12
Tambunam	500	Jalan Kota Kinabalu-Keningau-Tenom	8	0	8	0	0	0
Keningau	500	Jalan Kota Kinabalu-Keningau-Tenom	11	2	13	2	0	2
Tenom	500	Jalan Kota Kinabalu-Keningau-Tenom	8	2	10	0	0	0
Beaufort	01	Jalan Kota Kinabalu-Sindumin	14	2	16	7	0	7
	502	Jalan Beaufort-Menumbok	8	0	8	4	0	4
Sipitang	01	Jalan Kota Kinabalu-Sindumin	2	0	2	2	0	2
Kuala Penyu	502	Jalan Beaufort-Menumbok	0	0	0	0	0	0
TOTAL			165	15	180	40	2	42

LINTASAN RESOURCES SDN. BHD.
PRIVATISATION OF WEST COAST SABAH FEDERAL ROADS MAINTENANCE

SUMMARY - BRIDGES

MONTH : OCTOBER 2006

ITEM	DISTRICT	ROUTE NO	ROAD NAME	General Maintenance			Painting		
				Previous	Current	Cumm.	Previous	Current	Cumm.
				(No.)	(No.)	(No.)	(No.)	(No.)	(No.)
1	Kota Belud	01	Jalan Kota Kinabalu - Kudat	13	2	15	-	2	2
2	Kota Marudu	01	Jalan Kota Kinabalu - Kudat	20	-	20	-	-	-
3	Kudat	01	Jalan Kota Kinabalu - Kudat	4	-	4	-	-	-
TOTAL :				37	2	39	-	2	2

LINTASAN RESOURCES SDN. BHD.
 PRIVATISATION OF WEST COAST SABAH FEDERAL ROADS MAINTENANCE

SUMMARY - BRIDGES

Month: October 2006

ITEM	DISTRICT	ROUTE NO	ROAD NAME	General Maintenance			Painting		
				Previous	Current	Cumm.	Previous	Current	Cumm.
				(No.)	(No.)	(No.)	(No.)	(No.)	(No.)
1	Kota Kinabalu	01	Jalan Kota Kinabalu - Kudat	13	4	17	5	-	5
2	Tuaran	01	Jalan Kota Kinabalu - Kudat	7	-	7	-	-	-
3	Tuaran	22	Jalan Kota Kinabalu - Sandakan	-	-	-	-	-	-
4	Tuaran	503	Jalan Berungis - Kota Belud	4	-	4	-	-	-
5	Kota Kinabalu	606	Jalan Susur Sepangar Bay	2	1	3	1	-	1
6	Kota Kinabalu	607	Jalan Masuk Ke Pelabuhan Baru, KK	-	-	-	-	-	-
TOTAL :				26	5	31	6	-	6

LINTASAN RESOURCES SDN. BHD.
 MAINTENANCE OF FEDERAL ROADS - WEST COAST, SABAH

R05 BRIDGES

DISTRICT: TUARAN
ROUTE NO: 01
ROAD NAME: JALAN KOTA KINABALU - KUDAT
MONTH: OCTOBER 2006

Item	Chainage	Bridge Name	Cleaning						Greasing	Localised Painting (No.)	Date of Work Done	REMARKS
			Expansion Joints	Weep Holes	Parapets	Bearing Shelves	Markings	Vegetation	Steel Bearings	Steel Bridges		
BROUGHT FORWARD:		7								-		
TOTAL :		7								-		

LINTASAN RESOURCES SDN. BHD.
 MAINTENANCE OF FEDERAL ROADS - WEST COAST, SABAH

R05 BRIDGES

DISTRICT: TUARAN

ROUTE NO: 22

ROAD NAME: JALAN KOTA KINABALU - SANDAKAN

MONTH: OCTOBER 2006

Item	Chainage	Bridge Name	Cleaning					Greasing	Localised Painting (No.)		Date of Work Done	REMARKS
			Expansion Joints	Weep Holes	Parapets	Bearing Shelves	Markings	Vegetation	Steel Bearings	Steel Bridges		
BROUGHT FORWARD:		-								-		
TOTAL :		0								-		

PROGRESS REPORT

Form: LRSB-OP-F056-R05S(B)

PROGRESS REPORT

Form: LRSB-OP-F057-R05S(B) Rev: 0

Rev: 0

LINTASAN RESOURCES SDN. BHD.

PRIVATISATION OF WEST COAST SABAH FEDERAL ROADS MAINTENANCE

SUMMARY - BRIDGES***MONTH: OCTOBER 2006***

ITEM	DISTRICT	ROUTE NO	ROAD NAME	General Maintenance			Painting		
				Previous	Current	Cumm.	Previous	Current	Cumm.
				(No.)	(No.)	(No.)	(No.)	(No.)	(No.)
1	Ranau	22	Jalan Kota Kinabalu - Sandakan	12	0	12	12	0	12
TOTAL :				12	0	12	12	0	12

LINTASAN RESOURCES SDN. BHD.
 MAINTENANCE OF FEDERAL ROADS - WEST COAST, SABAH

R05 BRIDGES

DISTRICT: Ranau

ROUTE NO: 22

ROAD NAME: Jalan Kota Kinabalu - Sandakan

MONTH: October 2006

Item	Chainage	Bridge Name	Cleaning					Greasing	Localised Painting (No.)		Date of Work Done	REMARKS
			Expansion Joints	Weep Holes	Parapets	Bearing Shelves	Markings	Vegetation	Steel Bearings	Steel Bridges		
BROUGHT FORWARD FROM SEPTEMBER 2006:		12							12			
1												
2												
3												
4												
5												
6												
7												
8												
9												
10												
11												
12												
13												
14												
15												
CARRIED FORWARD:		12							12			

LINTASAN RESOURCES SDN. BHD.
PRIVATISATION OF WEST COAST SABAH FEDERAL ROADS MAINTENANCE

SUMMARY - BRIDGES

Month : OCTOBER 2006

ITEM	DISTRICT	ROUTE NO	ROAD NAME	General Maintenance			Painting		
				Previous	Current	Cumm.	Previous	Current	Cumm.
				(No.)	(No.)	(No.)	(No.)	(No.)	(No.)
1	Kota Kinabalu	01	Jalan Kota Kinabalu - Sindumin	-	-	-	-	-	-
2	Penampang	01	Jalan Kota Kinabalu - Sindumin	8	-	8	-	-	-
3	Papar	01	Jalan Kota Kinabalu - Sindumin	18	2	20	1	-	1
4	Penampang	500	Jalan Kota Kinabalu - Keningau - Tenom	6	-	6	2	-	2
5	Kota Kinabalu	501	Jalan Kota Kinabalu - Penampang - Lok Kawi	6	-	6	3	-	3
6	Penampang	501	Jalan Kota Kinabalu - Penampang - Lok Kawi	1	-	1	1	-	1
7	Kota Kinabalu	608	Jalan Masuk Ke Lapangan Terbang Lama, KK	-	-	-	-	-	-
TOTAL :				39	2	41	7	-	7

LINTASAN RESOURCES SDN. BHD.
 MAINTENANCE OF FEDERAL ROADS - WEST COAST, SABAH

R05 BRIDGES

DISTRICT: PAPAR
ROUTE NO: 01
ROAD NAME: JALAN KOTA KINABALU - SINDUMIN
MONTH: OCTOBER 2006

Item	Chainage	Bridge Name	Cleaning						Greasing	Localised Painting (No.)	Date of Work Done	REMARKS	
			Expansion Joints	Weep Holes	Parapets	Bearing Shelves	Markings	Vegetation	Steel Bearings	Steel Bridges			
BROUGHT FORWARD:		18								1			
1	26.540	Kawang Bridge	1	√	√	√	-	√	√	-	-	13/10/2006	1st cycle for Normal road
2	18.520	Kinarut Bridge	1	√	√	√	-	√	√	-	-	28/10/2006	1st cycle for Normal road
TOTAL:		20								1			

LINTASAN RESOURCES SDN. BHD.
PRIVATISATION OF WEST COAST SABAH FEDERAL ROADS MAINTENANCE

SUMMARY - BRIDGES

Month : OCTOBER 2006

ITEM	DISTRICT	ROUTE NO	ROAD NAME	General Maintenance			Painting		
				Previous	Current	Cumm.	Previous	Current	Cumm.
				(No.)	(No.)	(No.)	(No.)	(No.)	(No.)
1	Tambunan	500	Jalan Kota Kinabalu - Keningau - Tenom	8	-	8	-	-	-
2	Keningau	500	Jalan Kota Kinabalu - Keningau - Tenom	11	2	13	2	-	2
3	Tenom	500	Jalan Kota Kinabalu - Keningau - Tenom	8	2	10	-	-	-
TOTAL :				27	4	31	2	-	2

LINTASAN RESOURCES SDN. BHD.
 MAINTENANCE OF FEDERAL ROADS - WEST COAST, SABAH
R05 BRIDGES

DISTRICT: TAMBUNAN
ROUTE NO: 500
ROAD NAME: JALAN KOTA KINABALU - KENINGAU - TENOM
MONTH: OCTOBER 2006

Item	Chainage	Bridge Name	Cleaning					Greasing	Localised Painting (No.)	Date of Work Done	REMARKS
			Expansion Joints	Weep Holes	Parapets	Bearing Shelves	Markings	Vegetation	Steel Bearings		
BROUGHT FORWARD:		8									
TOTAL :		8									

LINTASAN RESOURCES SDN. BHD.
MAINTENANCE OF FEDERAL ROADS - WEST COAST, SABAH
R05 BRIDGES

DISTRICT: KENINGAU
ROUTE NO: 500
ROAD NAME: JALAN KOTA KINABALU - KENINGAU - TENOM
MONTH: OCTOBER 2006

Item	Chainage	Bridge Name	Cleaning						Greasing	Localised Painting (No.)	Date of Work Done	REMARKS
			Expansion Joints	Weep Holes	Parapets	Bearing Shelves	Markings	Vegetation	Steel Bearings	Steel Bridges		
BROUGHT FORWARD:		11								2		
1	138.259	Jambatan Mosolog	1	✓	✓	✓		✓	✓		21.10.2006	
2	132.800	Jambatan Patikang	1	✓	✓	✓		✓	✓		27.10.2006	
TOTAL :		13								2		

LINTASAN RESOURCES SDN. BHD.
MAINTENANCE OF FEDERAL ROADS - WEST COAST, SABAH
R05 BRIDGES

DISTRICT: TENOM
ROUTE NO: 500
ROAD NAME: JALAN KOTA KINABALU - KENINGAU - TENOM
MONTH: OCTOBER 2006

Item	Chainage	Bridge Name	Cleaning						Greasing	Localised Painting (No.)	Date of Work Done	REMARKS
			Expansion Joints	Weep Holes	Parapets	Bearing Shelves	Markings	Vegetation	Steel Bearings	Steel Bridges		
BROUGHT FORWARD:		8										
1	145.150	Jambatan Tepoh	1	✓	✓	✓		✓	✓		10.10.06	
2	140.050	Pamilaan	1	✓	✓	✓		✓	✓		11.10.06	
TOTAL :		10										

LINTASAN RESOURCES SDN. BHD.
PRIVATISATION OF WEST COAST SABAH FEDERAL ROADS MAINTENANCE

SUMMARY - BRIDGES

Month : OCTOBER 2006

ITEM	DISTRICT	ROUTE NO	ROAD NAME	General Maintenance			Painting		
				Previous	Current	Cumm.	Previous	Current	Cumm.
				(No.)	(No.)	(No.)	(No.)	(No.)	(No.)
1	Beaufort	01	Jalan Kota Kinabalu - Sindumin	14	2	16	7	-	7
2	Sipitang	01	Jalan Kota Kinabalu - Sindumin	2	-	2	2	-	2
3	Beaufort	502	Jalan Beaufort - Menumbok	8	-	8	4	-	4
4	Kuala Penyu	502	Jalan Beaufort - Menumbok (no bridge)	-	-	-	-	-	-
TOTAL :				24	2	26	13	-	13

LINTASAN RESOURCES SDN. BHD.
 MAINTENANCE OF FEDERAL ROADS - WEST COAST, SABAH
R05 BRIDGES

DISTRICT: BEAUFORT

ROUTE NO: 01

ROAD NAME: JALAN KOTA KINABALU - SINDUMIN

MONTH: OCTOBER 2006

Item	Chainage	Bridge Name	Cleaning						Greasing	Localised Painting (No.)	Date of Work Done	REMARKS
			Expansion Joints	Weep Holes	Parapets	Bearing Shelves	Markings	Vegetation	Steel Bearings	Steel Bridges		
BROUGHT FORWARD:		14								7		
1	110.341	Sg. Bukau Bridge	1	√	√	√			√		30/10/2006	1st cycle for normal road
2	123.180	Sg. Maraba Bridge	1	√	√	√			√		30/10/2006	1st cycle for normal road
CARRIED FORWARD:		16								7		

LINTASAN RESOURCES SDN. BHD.
 MAINTENANCE OF FEDERAL ROADS - WEST COAST, SABAH
R05 BRIDGES

DISTRICT: BEAUFORT

ROUTE NO: 502

ROAD NAME: JALAN BEAUFORT - MENUMBOK

MONTH: OCTOBER 2006

Item	Chainage	Bridge Name	Cleaning					Greasing	Localised Painting (No.)	Date of Work Done	REMARKS
			Expansion Joints	Weep Holes	Parapets	Bearing Shelves	Markings	Vegetation	Steel Bearings		
BROUGHT FORWARD:		8							4		
CARRIED FORWARD:		8							4		

