

R 05

**PENYENGGARAAN
JAMBATAN & PEMBENTUNG
(BRIDGES & CULVERTS)**

DISTRICT : KOTA BELUD
ROUTE NO : 01-JALAN KOTA KINABALU - KUDAT
LOCATION : CH:61.245

R05 CULVERT



Film Batch No: P1010043

BEFORE



Film Batch No: P1010042

IN PROGRESS



Film Batch No: P1010040

AFTER

132

R05 CULVERTS

Film Batch No: 1298/11



BEFORE

Film Batch No: 1298/12



IN PROGRESS

Film Batch No: 1298/13



AFTER

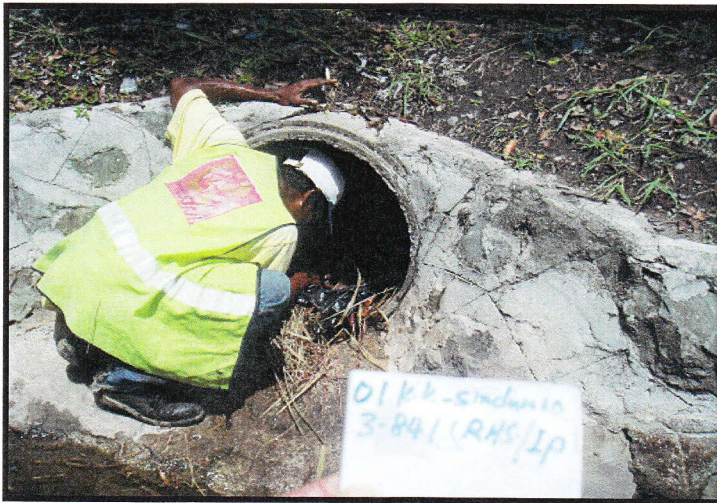
DISTRICT : KOTA KINABALU
ROUTE NO : 01 JALAN KOTA KINABALU-SINDUMIN
LOCATION : CH3.841 (RHS)

R05 CULVERT



Film Batch No: 15/9/4-001

BEFORE



Film Batch No: 15/9/4-002

IN PROGRESS



Film Batch No: 15/9/4-003

AFTER

DISTRICT : PENAMPANG
ROUTE NO : 501 JALAN KK-PENAMPANG-LOK KAWI
LOCATION : CH15.540

R05 CULVERT



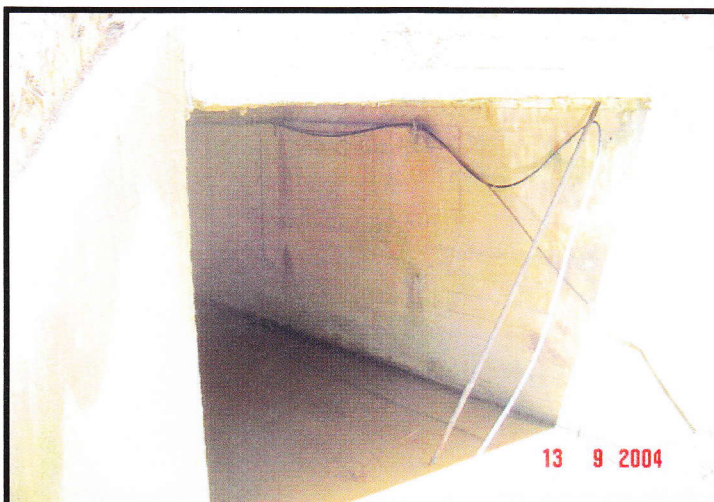
Film Batch No: 1494-DSC965

BEFORE



Film Batch No: 1494-DSC966

IN PROGRESS



Film Batch No: 1494-DSC988

AFTER

135

R05 CULVERT

Film Batch No: 1260/12



BEFORE

Film Batch No: 1260/13



IN PROGRESS

Film Batch No: 1260/18



AFTER

DISTRICT : PAPAR
ROUTE NO : 01 JALAN KOTA KINABALU-SINDUMIN
LOCATION : Ch61.340

R05 CULVERT



Film Batch No: 21/9/4-032jpg

BEFORE



Film Batch No: 21/9/4-033jpg

IN PROGRESS



Film Batch No: 21/9/4-004jpg

AFTER

R05 BRIDGES & CULVERT

FILM BATCH NO: 3304/6



BEFORE

FILM BATCH NO: 1820A/0



IN PROGRESS

FILM BATCH NO: 1820A/1



AFTER

DISTRICT : KENINGAU
ROUTE NO : 500 JALAN KOTA KINABALU-KENINGAU-TENOM
LOCATION : CH116.550

R05 BRIDGES & CULVERTS



Film Batch No: R05-1109-1

BEFORE



Film Batch No: R05-1109-2

IN PROGRESS



Film Batch No: R05-1109-3

AFTER

128

DISTRICT : KENINGAU
ROUTE NO : 500 JALAN KOTA KINABALU-KENINGAU-TENOM
LOCATION : CH120.300

R05 BRIDGES & CULVERTS



Film Batch No: R05-1109-5

BEFORE



Film Batch No: R05-1109-6

IN PROGRESS



Film Batch No: R05-1109-7

AFTER

120

R05: BRIDGES & CULVERTS

FILM BATCH NO: 1671/10



BEFORE

FILM BATCH NO: 1671/11



IN PROGRESS

FILM BATCH NO: 1671/12



AFTER

R05: BRIDGES & CULVERTS

FILM BATCH NO: 1671/7



BEFORE

FILM BATCH NO: 1671/8



IN PROGRESS

FILM BATCH NO: 1671/9



AFTER

152

R05: BRIDGES & CULVERTS

FILM BATCH NO: 1671/7



BEFORE

FILM BATCH NO: 1671/8



IN PROGRESS

FILM BATCH NO: 1671/9



AFTER

152

DISTRICT : BEAUFORT
ROUTE NO : 01 JALAN KOTA KINABALU - SINDUMIN
LOCATION : CH72.510 (KM74.270) - RHS

R05 BRIDGE



BEFORE



IN PROGRESS



AFTER

153

DISTRICT : BEAUFORT
ROUTE NO : 01 JALAN KOTA KINABALU - SINDUMIN
LOCATION : CH89.470 (KM91.230)

R05 BRIDGE



BEFORE



IN PROGRESS



AFTER

144

DISTRICT : BEAUFORT
ROUTE NO : 01 JALAN KOTA KINABALU - SINDUMIN
LOCATION : CH110.341 (KM112.101)

R05 BRIDGE



BEFORE



IN PROGRESS



AFTER

25

DISTRICT : SIPITANG
ROUTE NO : 01 JALAN KOTA KINABALU - SINDUMIN
LOCATION : CH138.215 (KM139.975)

R05 CULVERT



BEFORE



IN PROGRESS



AFTER