

**PENSWASTAAN PENYENGGARAAN
JALAN-JALAN PERSEKUTUAN DI SABAH
(PANTAI BARAT & PENDALAMAN)**



THE GOVERNMENT OF MALAYSIA

**LAPORAN KEMAJUAN BULANAN
No. 7**

MAC 2004



Jabatan Kerja Raya, Negeri Sabah

Kontraktor : Lintasan Resources Sdn. Bhd. 566483-H

R 05

**PENYENGGARAAN
JAMBATAN & PEMBENTUNG
(BRIDGES & CULVERTS)**

R05 CULVERTS

Film Batch No: 0809/00



BEFORE

Film Batch No: 0809/0



IN PROGRESS

Film Batch No: 0809/1



AFTER

R05 CULVERTS

Film Batch No: 0809/8



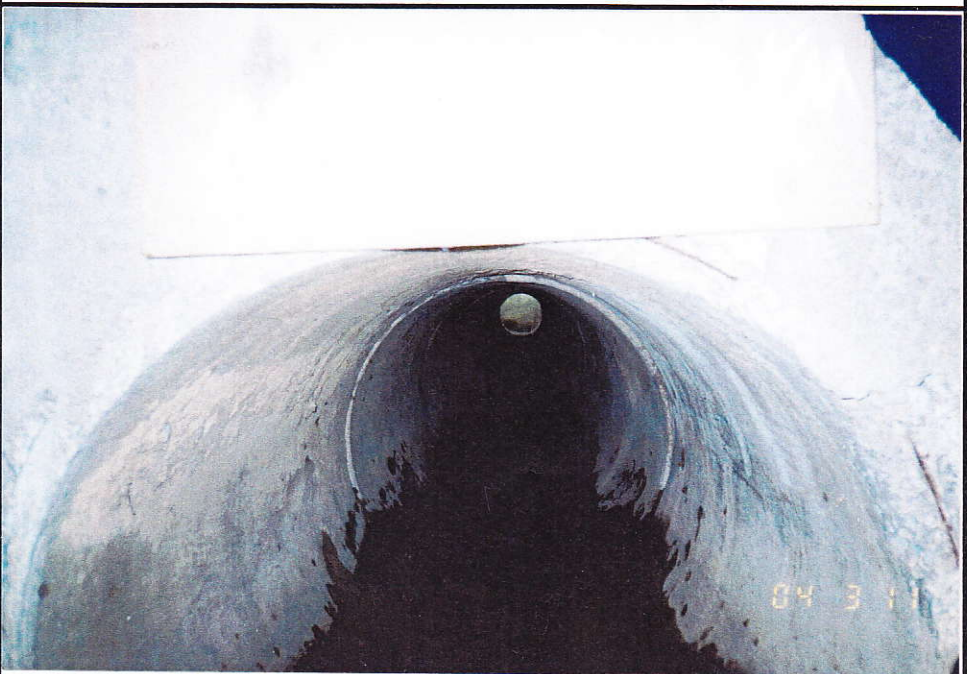
BEFORE

Film Batch No: 0809/9



IN PROGRESS

Film Batch No: 0809/10



AFTER

DISTRICT : PENAMPANG

ROUTE NO. : 501 JALAN KOTA KINABALU-PENAMPANG-LOK KAWI

LOCATION : KM8.980(RHS)
(CH 6.029)

R05 CULVERTS

Film Batch No. 0807/18



BEFORE

Film Batch No. 0807/19



IN PROGRESS

DISTRICT : PENAMPANG

ROUTE NO. : 501 JALAN KOTA KINABALU-PENAMPANG-LOK KAWI

LOCATION : KM8.980(RHS)
(CH 6.029)

R05 CULVERTS

Film Batch No. 0819/7



Film Batch No. 0819/8



AFTER

R05 CULVERTS

Film Batch No: 0819/9



BEFORE

Film Batch No: 0819/11



IN PROGRESS

Film Batch No: 0819/12A



AFTER

R05 BRIDGES & CULVERTS

FILM BATCH NO: 4449/19



BEFORE

FILM BATCH NO: 4449/20



IN PROGRESS

FILM BATCH NO : 4498/10



AFTER

R05 BRIDGES & CULVERTS

FILM BATCH NO:4449/15



BEFORE

FILM BATCH NO:4449/16



IN PROGRESS

FILM BATCH NO:4449/21



AFTER

R05 BRIDGES & CULVERTS

FILM BATCH NO:4488/6



BEFORE

FILM BATCH NO:4488/8



IN PROGRESS

FILM BATCH NO:4488/9



AFTER