

**PENSWASTAAN PENYENGGARAAN  
JALAN-JALAN PERSEKUTUAN DI SABAH  
(PANTAI BARAT & PENDALAMAN)**



**THE GOVERNMENT OF MALAYSIA**

**LAPORAN KEMAJUAN BULANAN  
No. 4**

**DISEMBER 2003**



*Jabatan Kerja Raya, Negeri Sabah*

*Kontraktor : Lintasan Resources Sdn. Bhd. 566483-H*

**R 05**

**PENYENGGARAAN  
JAMBATAN & PEMBENTUNG  
(BRIDGES & CULVERTS)**

DISTRICT : KUDAT

ROUTE NO. : 01 JALAN KOTA KINABALU-KUDAT

LOCATION : 101.357 KM RHS

### R05 BRIDGES & CULVERT

FILM BATCH NO: 7834/32



BEFORE

FILM BATCH NO: 7834/36A



IN PROGRESS

FILM BATCH NO: 7834/00



AFTER

Film Batch No: 0460/24



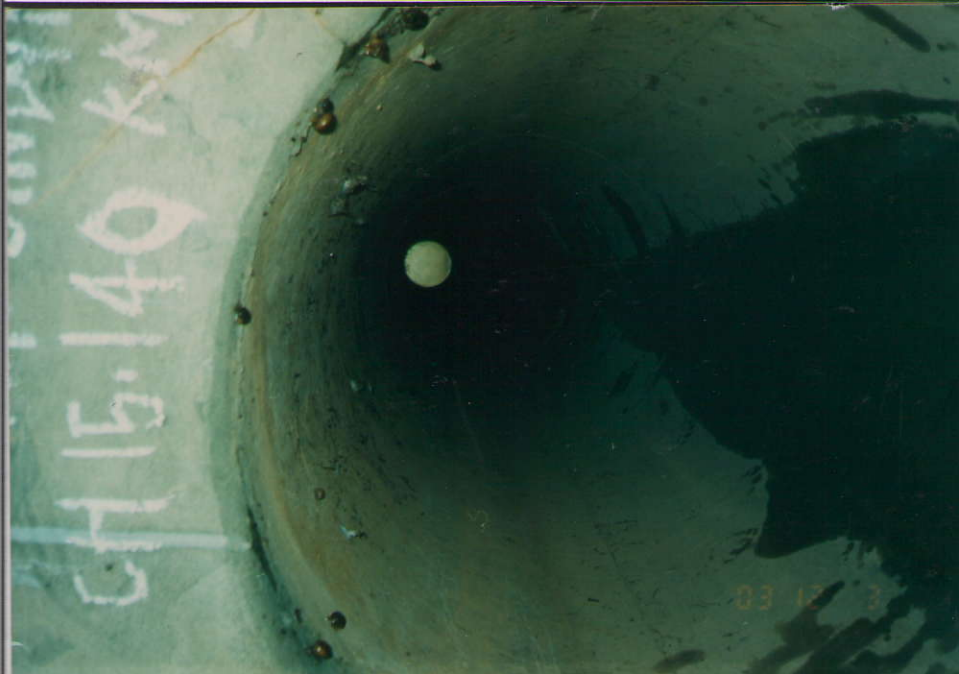
BEFORE

Film Batch No: 0460/25



IN PROGRESS

Film Batch No: 0460/26



AFTER

Film Batch No: 0460/27



BEFORE

Film Batch No: 0460/28



IN PROGRESS

Film Batch No: 0460/29



AFTER

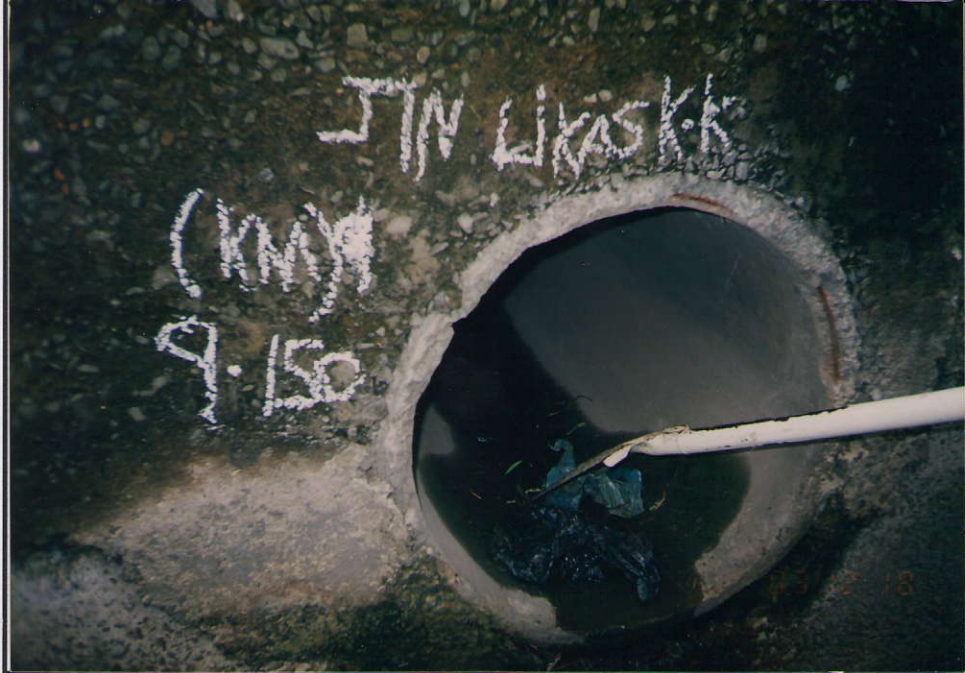
R05 CULVERTS

Film Batch No: 0492/12



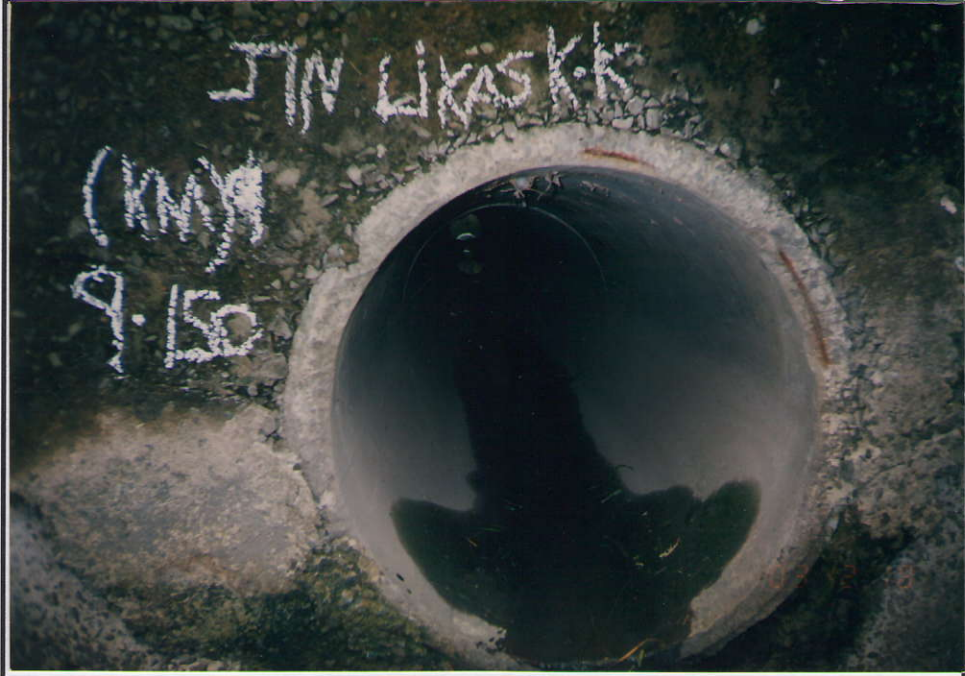
BEFORE

Film Batch No: 0492/13



IN PROGRESS

Film Batch No: 0492/14



AFTER

R05 CULVERTS

Film Batch No: 0490/10



BEFORE

Film Batch No: 0490/11



IN PROGRESS

Film Batch No: 0490/12



AFTER

Film Batch No: 0475/4



BEFORE

Film Batch No: 0475/5



IN PROGRESS

Film Batch No: 0475/3



AFTER

Film Batch No: 0486/2



BEFORE

Film Batch No: 0486/5



IN PROGRESS

Film Batch No: 0513/1



IN PROGRESS

DISTRICT : TUARAN  
ROUTE NO. : 01 JALAN KOTA KINABALU - KUDAT  
R05 BRIDGES

LOCATION : KM 8.988

Film Batch No: 0513/2



AFTER

**R05 BRIDGES & CULVERT**

FILM BATCH NO: 2155/23



**BEFORE**

FILM BATCH NO: 2275/1



**IN PROGRESS**

FILM BATCH NO: 2555/10



**AFTER**

DISTRICT : KENINGAU  
ROUTE NO. : 500 JLN KOTA KINABALU-  
KENINGAU-TENOM

LOCATION : 112.150 KM RHS

### R05 BRIDGES & CULVERT

FILM BATCH NO: 2155/24



BEFORE

FILM BATCH NO: 2155/25



IN PROGRESS

FILM BATCH NO: 2555/11



AFTER

DISTRICT : RANAU

ROUTE NO. : 22 JALAN KOTA KINABALU-SANDAKAN LOCATION : 144.700 KM LHS

**R05 BRIDGES & CULVERT**

FILM BATCH NO: 6238/6



BEFORE

FILM BATCH NO: 6238/7



IN PROGRESS

FILM BATCH NO: 6238/8



AFTER

**R05 BRIDGES & CULVERTS**

FILM BATCH NO.: 3219/8



**BEFORE**

FILM BATCH NO.: 3219/9



**IN PROGRESS**

FILM BATCH NO.: 3219/10



**AFTER**