

R 03

**PEMOTONGAN
RUMPUT
(GRASS CUTTING)**

121

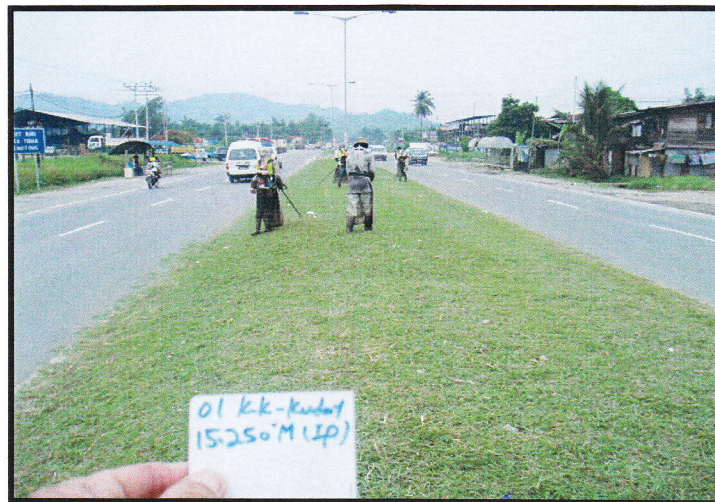
DISTRICT : KOTA KINABALU
ROUTE NO : 01 JALAN KOTA KINABALU-KUDAT
LOCATION : KM15.250 (Median)

R03 GRASS CUTTING



Film Batch No: 004jpg/14-8-04

BEFORE



Film Batch No: 005jpg/14-8-04

IN PROGRESS



Film Batch No: 006jpg/14-8-04

AFTER

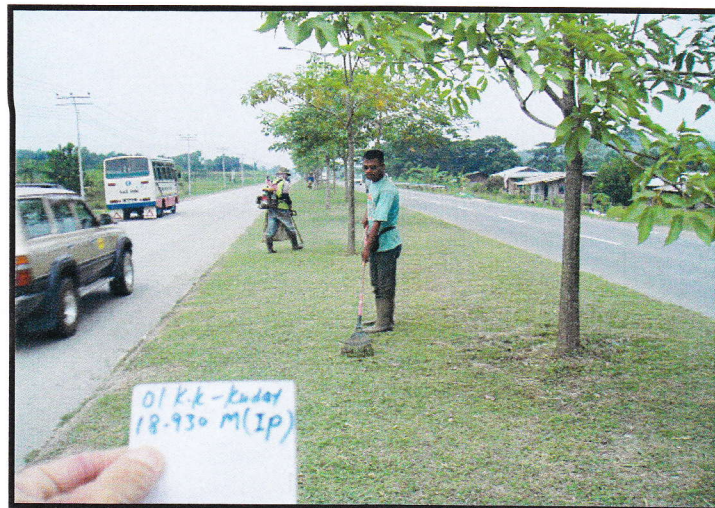
DISTRICT : KOTA KINABALU
ROUTE NO : 01 JALAN KOTA KINABALU-KUDAT
LOCATION : KM18.930 (Median)

R03 GRASS CUTTING



Film Batch No: 009jpg./14-8-04

BEFORE



Film Batch No: 010jpg./14-8-04

IN PROGRESS



Film Batch No: 016jpg./14-8-04

AFTER

DISTRICT : PAPAR
ROUTE NO : 01 JALAN KOTA KINABALU-SINDUMIN
LOCATION : CH25.100 (LHS)

R03 GRASS CUTTING



Film Batch No: 12/8/4-019jpg

BEFORE



Film Batch No: 12/8/4-020jpg

IN PROGRESS



Film Batch No: 12/8/4-020jpg

AFTER

124

R03 GRASS CUTTING

Film Batch No: 2004/001



BEFORE

Film Batch No: 2004/002



IN PROGRESS

Film Batch No: 2004/003



AFTER

125

DISTRICT : TAMBUNAN

ROUTE NO. : 500 JALAN KK-KGU-TENOM

LOCATION : CH56.450 (KM66.350)

R03: GRASS CUTTING

FILM BATCH NO: 4693/1



BEFORE

FILM BATCH NO: 4693/2



IN PROGRESS

FILM BATCH NO: 4693/3



AFTER