

R01

(POTHOLE PATCHING)

DISTRICT : BEAUFORT
ROUTE NO : 01 JALAN KOTA KINABALU -SINDUM IN
LOCATION : CH95.105 (KM 96.865)-LHS

R01 POTHOLE PATCHING



BEFORE



IN PROGRESS



AFTER

DISTRICT : KOTA KINABALU
ROUTENO : 01 JALAN KOTA KINABALU -KUDAT
LOCATION : CH 13.985 (LHS)

R01 POTHOLE PATCHING



BEFORE



IN PROGRESS



AFTER

LINTASAN RESOURCES SDN. BHD.
POTHOLE PATCHING
GRAND SUMMARY

MONTH: MAY 2008

DISTRICT	ROUTE NO.	ROAD NAME	PREMIX QUANTITY		
			Previous Month	Current Month	Cummulative
			(Ton)	(Ton)	(Ton)
Kota Belud	01	Jalan Kota Kinabalu-Kudat	57.60	17.38	74.98
Kota Marudu	01	Jalan Kota Kinabalu-Kudat	6.43	7.34	13.77
Kudat	01	Jalan Kota Kinabalu-Kudat	36.49	4.11	40.60
Tuaran	01	Jalan Kota Kinabalu-Kudat	51.80	2.90	54.70
	22	Jalan Kota Kinabalu-Sandakan	130.47	44.69	175.16
	503	Jalan Berungis-Kota Belud	17.24	0.00	17.24
Kota Kinabalu	01	Jalan Kota Kinabalu-Kudat	75.01	6.34	81.35
	01	Jalan Kota Kinabalu-Sindumin	2.59	0.00	2.59
	606	Jalan Susur Sepangar Bay	34.45	5.58	40.03
	607	Jalan Masuk Ke Pelabuhan Baru	1.31	0.00	1.31
	608	Jalan Masuk Ke Lapangan Terbang Lama	0.00	0.00	0.00
Penampang	01	Jalan Kota Kinabalu-Sindumin	54.49	3.44	57.93
	500	Jalan Kota Kinabalu-Keningau-Tenom	67.35	4.48	71.83
	501	Jalan Kota Kinabalu-Penampang-Lok Kawi	50.44	14.03	64.47
Papar	01	Jalan Kota Kinabalu-Sindumin	362.77	31.78	394.55
Ranau	22	Jalan Kota Kinabalu-Sandakan	266.38	69.53	335.91
Tambunam	500	Jalan Kota Kinabalu-Keningau-Tenom	28.40	6.83	35.23
Keningau	500	Jalan Kota Kinabalu-Keningau-Tenom	1.98	2.50	4.48
Tenom	500	Jalan Kota Kinabalu-Keningau-Tenom	1.21	0.16	1.37
Beaufort	01	Jalan Kota Kinabalu-Sindumin	11.54	8.69	20.24
	502	Jalan Beaufort-Menumbok	21.04	3.37	24.41
Sipitang	01	Jalan Kota Kinabalu-Sindumin	5.96	1.79	7.75
Kuala Penyu	502	Jalan Beaufort-Menumbok	32.46	1.47	33.94
TOTAL			1,317.41	236.42	1,553.83

LINTASAN RESOURCES SDN BHD.
 MAINTENANCE OF FEDERAL ROADS - WEST COAST, SABAH

SUMMARY - POTHOLE PATCHING RECORD

Month: MAY 2008

ITEM	DISTRICT	ROUTE NO.	ROAD NAME	AREA (m ²)			VOLUME (m ³)			PREMIX QUANTITY (TON)		
				PREVIOUS MONTH	CURRENT MONTH	CUM. MONTH	PREVIOUS MONTH	CURRENT MONTH	CUM. MONTH	PREVIOUS MONTH	CURRENT MONTH	CUM. MONTH
1	Beaufort	01	Jalan Kota Kinabalu - Sindumin	100.315	74.910	175.225	4.974	3.747	8.721	11.544	8.694	20.238
2	Sipitang	01	Jalan Kota Kinabalu - Sindumin	50.850	15.370	66.220	2.560	0.772	3.332	5.955	1.794	7.749
3	Beaufort	502	Jalan Beaufort - Menumbok	214.405	36.240	250.645	9.061	1.453	10.514	21.035	3.371	24.406
4	Kuala Penyu	502	Jalan Beaufort - Menumbok	281.795	14.630	296.425	13.989	0.635	14.624	32.464	1.474	33.938
TOTAL:				647.365	141.150	788.515	30.584	6.607	37.191	70.998	15.333	86.331

LINTASAN RESOURCES SDN. BHD.
MAINTENANCE OF FEDERAL ROADS - WEST COAST, SABAH

R01 POTHOLE PATCHING RECORD

DISTRICT: BEAUFORT

ROUTE NO. 01

ROAD NAME: JALAN KOTA KINABALU - SINDUMIN

MONTH: MAY 2008

ITEM	DATE	CHAINAGE	Length (m)	Width (m)	Depth (m)	AREA (m2)	VOLUME (m3)	PREMIX QUANTITY (ton)	REMARKS
BROUGHT FORWARD:			-	-	-	100.315	4.974	11.544	-
1	07/05/2008	122.963	1.40	1.10	0.050	1.540	0.077	0.179	RHS
2	07/05/2008	123.792	1.50	1.20	0.050	1.800	0.090	0.209	RHS
3	07/05/2008	123.795	2.40	1.50	0.050	3.600	0.180	0.418	RHS
4	07/05/2008	123.828	4.60	1.40	0.050	6.440	0.322	0.747	RHS
5	08/05/2008	123.829	5.20	1.40	0.050	7.280	0.364	0.844	RHS
6	08/05/2008	123.830	2.00	1.80	0.050	3.600	0.180	0.418	LHS
7	08/05/2008	123.832	1.90	1.80	0.050	3.420	0.171	0.397	LHS
8	09/05/2008	123.430	3.70	1.70	0.050	6.290	0.315	0.731	LHS
9	09/05/2008	123.796	1.60	1.50	0.050	2.400	0.120	0.278	RHS
10	09/05/2008	123.802	5.10	1.70	0.050	8.670	0.434	1.007	RHS
11	10/05/2008	95.236	1.00	0.90	0.050	0.900	0.045	0.104	RHS
12	10/05/2008	96.735	1.30	1.10	0.050	1.430	0.072	0.167	RHS
13	10/05/2008	96.737	1.70	1.20	0.050	2.040	0.102	0.237	LHS
14	10/05/2008	98.895	2.40	0.50	0.050	1.200	0.060	0.139	LHS
15	10/05/2008	99.065	0.40	0.60	0.050	0.240	0.012	0.028	LHS
16	10/05/2008	99.631	1.40	0.40	0.050	0.560	0.028	0.065	LHS
17	10/05/2008	99.891	0.40	0.40	0.050	0.160	0.008	0.019	LHS
18	10/05/2008	99.919	0.40	0.40	0.050	0.160	0.008	0.019	LHS
19	10/05/2008	99.972	0.50	0.40	0.050	0.200	0.010	0.023	LHS
20	14/05/2008	122.405	2.20	1.40	0.050	3.080	0.154	0.357	RHS
21	14/05/2008	122.450	2.60	1.90	0.050	4.940	0.247	0.573	RHS
22	16/05/2008	95.105	1.70	1.00	0.050	1.700	0.085	0.197	LHS
23	16/05/2008	95.395	1.40	1.20	0.050	1.680	0.084	0.195	LHS
24	16/05/2008	95.535	0.70	0.40	0.050	0.280	0.014	0.032	LHS
25	16/05/2008	95.542	2.10	1.00	0.050	2.100	0.105	0.244	LHS
26	16/05/2008	95.770	3.60	0.40	0.050	1.440	0.072	0.167	RHS
27	16/05/2008	95.773	3.40	0.70	0.050	2.380	0.119	0.276	RHS
28	16/05/2008	95.795	1.70	0.40	0.050	0.680	0.034	0.079	LHS
29	16/05/2008	96.292	0.50	0.40	0.050	0.200	0.010	0.023	RHS
30	26/05/2008	77.230	3.50	0.80	0.050	2.800	0.140	0.325	LHS
CARRIED FORWARD:						173.525	8.636	20.041	

	BROUGHT FORWARD:		-	-	-	173.525	8.636	20.041	-
31	26/05/2008	77.230	0.50	0.40	0.050	0.200	0.010	0.023	RHS
32	26/05/2008	82.690	1.50	1.00	0.050	1.500	0.075	0.174	LHS
33									
34									
35									
36									
37									
38									
39									
40									
41									
42									
43									
44									
45									
46									
47									
48									
49									
50									
51									
52									
53									
54									
55									
56									
57									
58									
59									
60									
	CARRIED FORWARD:					175.225	8.721	20.238	

LINTASAN RESOURCES SDN. BHD.
MAINTENANCE OF FEDERAL ROADS - WEST COAST, SABAH

R01 POTHOLE PATCHING RECORD

DISTRICT: SIPITANG

ROUTE NO. 01

ROAD NAME: JALAN KOTA KINABALU - SINDUMIN

MONTH: MAY 2008

ITEM	DATE	CHAINAGE	Length (m)	Width (m)	Depth (m)	AREA (m2)	VOLUME (m3)	PREMIX QUANTITY (ton)	REMARKS
BROUGHT FORWARD:			-	-	-	50.850	2.560	5.955	-
1	03/05/2008	139.510	0.40	0.40	0.050	0.160	0.008	0.019	RHS
2	03/05/2008	139.513	0.60	0.40	0.050	0.240	0.012	0.028	RHS
3	03/05/2008	139.531	0.30	0.20	0.050	0.060	0.003	0.007	RHS
4	03/05/2008	139.539	0.40	0.40	0.050	0.160	0.008	0.019	RHS
5	03/05/2008	139.544	0.50	0.40	0.050	0.200	0.010	0.023	RHS
6	03/05/2008	139.545	0.20	0.20	0.050	0.040	0.002	0.005	RHS
7	03/05/2008	139.547	1.70	0.70	0.050	1.190	0.060	0.139	RHS
8	03/05/2008	139.552	0.40	0.40	0.050	0.160	0.008	0.019	RHS
9	03/05/2008	139.560	0.20	0.20	0.050	0.040	0.002	0.005	RHS
10	03/05/2008	139.561	0.58	0.50	0.050	0.290	0.015	0.035	RHS
11	03/05/2008	139.570	0.75	0.60	0.050	0.450	0.023	0.053	RHS
12	03/05/2008	139.572	0.60	0.40	0.050	0.240	0.012	0.028	RHS
13	03/05/2008	139.573	0.45	0.20	0.050	0.090	0.005	0.012	RHS
14	03/05/2008	139.575	0.50	0.40	0.050	0.200	0.010	0.023	RHS
15	03/05/2008	139.576	0.20	0.10	0.050	0.020	0.001	0.002	RHS
16	03/05/2008	139.577	0.30	0.30	0.050	0.090	0.005	0.012	RHS
17	03/05/2008	139.580	0.50	0.40	0.050	0.200	0.010	0.023	RHS
18	03/05/2008	139.590	0.60	0.40	0.050	0.240	0.012	0.028	LHS
19	03/05/2008	139.605	1.10	0.90	0.050	0.990	0.050	0.116	RHS
20	03/05/2008	139.609	0.40	0.30	0.050	0.120	0.006	0.014	RHS
21	03/05/2008	139.611	1.40	0.60	0.050	0.840	0.042	0.097	RHS
22	03/05/2008	139.613	0.40	0.45	0.050	0.180	0.009	0.021	RHS
23	03/05/2008	139.614	0.40	0.30	0.050	0.120	0.006	0.014	RHS
24	03/05/2008	139.640	1.00	0.60	0.050	0.600	0.030	0.070	RHS
25	12/05/2008	146.720	1.80	1.40	0.050	2.520	0.126	0.292	LHS
26	12/05/2008	149.32	3.60	0.60	0.050	2.160	0.108	0.251	LHS
27	12/05/2008	149.315	3.60	0.60	0.050	2.160	0.108	0.251	RHS
28	12/05/2008	149.420	1.20	0.40	0.050	0.480	0.024	0.056	RHS
29	12/05/2008	149.420	0.50	0.40	0.050	0.200	0.010	0.023	LHS
30	12/05/2008	149.421	0.60	0.50	0.050	0.300	0.015	0.035	RHS
CARRIED FORWARD:						65.590	3.300	7.675	

	BROUGHT FORWARD:		-	-	-	65.590	3.300	7.675	-
31	12/05/2008	149.42	0.90	0.70	0.050	0.630	0.032	0.074	RHS
32									
33									
34									
35									
36									
37									
38									
39									
40									
41									
42									
43									
44									
45									
46									
47									
48									
49									
50									
51									
52									
53									
54									
55									
56									
57									
58									
59									
60									
CARRIED FORWARD:						66.220	3.332	7.749	

LINTASAN RESOURCES SDN. BHD.
 MAINTENANCE OF FEDERAL ROADS - WEST COAST, SABAH
R01 POTHOLE PATCHING RECORD

DISTRICT: BEAUFORT

ROUTE NO. 502

ROAD NAME: JALAN BEAUFORT - MENUKOK

MONTH: MAY 2008

ITEM	DATE	CHAINAGE	Length (m)	Width (m)	Depth (m)	AREA (m2)	VOLUME (m3)	PREMIX QUANTITY (ton)	REMARKS
BROUGHT FORWARD:			-	-	-	214.405	9.061	21.035	
1	05/05/2008	19.070	2.10	1.90	0.030	3.990	0.120	0.278	LHS
2	05/05/2008	19.073	3.00	1.00	0.030	3.000	0.090	0.209	LHS
3	05/05/2008	19.075	5.00	2.20	0.030	11.000	0.330	0.766	LHS
4	06/05/2008	1.850	2.00	1.60	0.050	3.200	0.160	0.371	LHS
5	06/05/2008	3.345	3.50	1.20	0.050	4.200	0.210	0.487	RHS
6	06/05/2008	4.430	1.30	1.00	0.050	1.300	0.065	0.151	LHS
7	06/05/2008	4.453	0.80	0.70	0.050	0.560	0.028	0.065	LHS
8	06/05/2008	4.454	0.70	0.70	0.050	0.490	0.025	0.058	LHS
9	06/05/2008	10.835	5.00	1.70	0.050	8.500	0.425	0.986	LHS
10									
11									
12									
13									
14									
15									
16									
17									
18									
19									
20									
21									
22									
23									
24									
25									
26									
27									
28									
29									
30									
CARRIED FORWARD:						250.645	10.514	24.406	

LINTASAN RESOURCES SDN BHD.
 MAINTENANCE OF FEDERAL ROADS - WEST COAST, SABAH

SUMMARY - POTHOLE PATCHING RECORD

Month : MAY 2008

ITEM	DISTRICT	ROUTE NO.	ROAD NAME	AREA (m ²)			VOLUME (m ³)			PREMIX QUANTITY (TON)		
				PREVIOUS MONTH	CURRENT MONTH	CUM. MONTH	PREVIOUS MONTH	CURRENT MONTH	CUM. MONTH	PREVIOUS MONTH	CURRENT MONTH	CUM. MONTH
1	TAMBUNAN	500	Jalan Kota Kinabalu - Keningau - Tenom	299.58	78.87	378.45	12.24	2.93	15.17	28.40	6.83	35.23
2	KENINGAU	500	Jalan Kota Kinabalu - Keningau - Tenom	25.31	26.27	51.58	0.86	1.08	1.94	1.98	2.50	4.48
3	TENOM	500	Jalan Kota Kinabalu - Keningau - Tenom	18.99	2.64	21.63	0.52	0.07	0.59	1.21	0.16	1.37
TOTAL:				343.88	107.78	451.66	13.62	4.08	17.70	31.59	9.49	41.08

LINTASAN RESOURCES SDN. BHD.
MAINTENANCE OF FEDERAL ROADS - WEST COAST, SABAH
R01 POTHOLE PATCHING RECORD

DISTRICT: TAMBUNAN
ROUTE NO. 500
ROAD NAME: JLN K. KINABALU - KENINGAU-TENOM
MONTH: May 2008

ITEM	DATE	CHAINAGE	Length (m)	Width (m)	Depth (m)	AREA (m2)	VOLUME (m3)	PREMIX QUANTITY (ton)	REMARKS
BROUGHT FORWARD:						299.58	12.24	28.40	
1	5/2/2008	83.076	0.80	0.70	0.075	0.56	0.04	0.09	RHS
2	5/2/2008	82.600	1.40	1.30	0.050	1.82	0.09	0.21	RHS
3	5/2/2008	82.534	0.90	0.60	0.075	0.54	0.04	0.09	RHS
4	5/2/2008	82.557	1.00	0.70	0.050	0.70	0.04	0.09	LHS
5	5/2/2008	82.561	1.00	0.80	0.050	0.80	0.04	0.09	LHS
6	5/5/2008	70.650	0.80	0.70	0.025	0.56	0.01	0.02	LHS
7	5/5/2008	70.646	1.70	0.70	0.025	1.19	0.03	0.07	LHS
8	5/5/2008	70.645	0.80	0.70	0.025	0.56	0.01	0.02	LHS
9	5/5/2008	70.642	3.00	0.90	0.025	2.70	0.07	0.16	LHS
10	5/5/2008	70.640	2.00	0.80	0.025	1.60	0.04	0.09	LHS
11	5/5/2008	70.671	0.80	0.80	0.025	0.64	0.02	0.05	LHS
12	5/5/2008	70.673	0.90	0.80	0.025	0.72	0.02	0.05	LHS
13	5/5/2008	70.674	1.00	0.90	0.025	0.90	0.02	0.05	LHS
14	5/5/2008	70.675	1.40	1.00	0.025	1.40	0.04	0.09	LHS
15	5/5/2008	70.694	1.50	2.50	0.025	3.75	0.09	0.21	RHS
16	5/5/2008	70.816	1.00	0.80	0.025	0.80	0.02	0.05	LHS
17	5/5/2008	70.820	1.00	0.50	0.025	0.50	0.01	0.02	LHS
18	5/5/2008	70.835	0.70	0.60	0.025	0.42	0.01	0.02	LHS
19	5/5/2008	71.171	2.20	1.80	0.025	3.96	0.10	0.23	RHS
20	5/5/2008	71.172	2.30	1.80	0.025	4.14	0.10	0.23	RHS
21	5/6/2008	72.720	1.90	0.70	0.025	1.33	0.03	0.07	LHS
22	5/6/2008	72.722	3.60	0.70	0.025	2.52	0.06	0.14	LHS
23	5/6/2008	72.715	1.00	0.50	0.025	0.50	0.01	0.02	LHS
24	5/6/2008	72.714	1.50	0.50	0.025	0.75	0.02	0.05	LHS
25	5/6/2008	73.032	3.40	0.70	0.03	2.38	0.06	0.14	RHS
26	5/6/2008	72.033	1.20	0.70	0.03	0.84	0.02	0.05	RHS
27	5/6/2008	72.031	1.00	0.60	0.03	0.60	0.02	0.05	RHS
28	5/6/2008	72.035	1.20	0.80	0.03	0.96	0.02	0.05	RHS
29	5/6/2008	71.948	1.40	0.80	0.03	1.12	0.03	0.07	RHS
30	5/6/2008	71.950	0.40	0.40	0.025	0.16	0.00	0.00	LHS
CARRIED FORWARD :						339.00	13.35	30.97	

LINTASAN RESOURCES SDN. BHD.
MAINTENANCE OF FEDERAL ROADS - WEST COAST, SABAH

R01 POTHOLE PATCHING RECORD

DISTRICT: TAMBUNAN

ROUTE NO. 500

ROAD NAME: JLN K. KINABALU - KENINGAU-TENOM

MONTH: April 2008

ITEM	DATE	CHAINAGE	Length (m)	Width (m)	Depth (m)	AREA (m2)	VOLUME (m3)	PREMIX QUANTITY (ton)	REMARKS
BROUGHT FORWARD:						339.00	13.35	30.97	
31	5/6/2008	71.911	0.60	0.50	0.025	0.30	0.01	0.02	LHS
32	5/6/2008	71.850	0.70	0.60	0.025	0.42	0.01	0.02	RHS
33	5/6/2008	71.858	1.50	0.50	0.025	0.75	0.02	0.05	RHS
34	5/6/2008	71.866	1.40	0.40	0.025	0.56	0.01	0.02	RHS
35	5/6/2008	69.835	1.30	1.20	0.050	1.56	0.08	0.19	RHS
36	5/6/2008	68.000	2.10	0.70	0.025	1.47	0.04	0.09	RHS
37	5/7/2008	80.317	1.00	0.80	0.025	0.80	0.02	0.05	RHS
38	5/7/2008	80.318	0.80	0.60	0.250	0.48	0.12	0.28	RHS
39	5/7/2008	77.120	1.00	0.90	0.025	0.90	0.02	0.05	RHS
40	5/7/2008	77.102	1.00	0.80	0.025	0.80	0.02	0.05	RHS
41	5/7/2008	77.100	0.90	0.70	0.025	0.63	0.02	0.05	RHS
42	5/7/2008	77.140	1.20	0.70	0.025	0.84	0.02	0.05	RHS
43	5/7/2008	74.477	0.90	0.60	0.025	0.54	0.01	0.02	RHS
44	5/7/2008	74.455	1.20	0.70	0.025	0.84	0.02	0.05	RHS
45	5/7/2008	74.265	0.80	0.80	0.075	0.64	0.05	0.12	RHS
46	5/7/2008	74.280	1.00	0.90	0.025	0.90	0.02	0.05	RHS
47	5/7/2008	65.904	2.60	0.80	0.075	2.08	0.16	0.37	RHS
48	5/7/2008	65.923	0.90	0.60	0.025	0.54	0.01	0.02	RHS
49	5/7/2008	62.800	0.80	0.70	0.025	0.56	0.01	0.02	RHS
50	5/20/2008	83.280	2.00	0.70	0.025	1.40	0.04	0.09	RHS
51	5/20/2008	85.886	0.70	0.60	0.025	0.42	0.01	0.02	RHS
52	5/20/2008	86.346	1.70	1.00	0.050	1.70	0.09	0.21	RHS
53	5/20/2008	94.469	1.80	0.90	0.05	1.62	0.08	0.19	RHS
54	5/20/2008	95.558	1.00	0.90	0.025	0.90	0.02	0.05	RHS
55	5/20/2008	95.559	1.60	1.00	0.075	1.60	0.12	0.28	RHS
56	5/20/2008	95.591	1.80	1.30	0.08	2.34	0.18	0.42	RHS
57	5/21/2008	99.570	1.00	0.90	0.03	0.90	0.02	0.05	LHS
58	5/21/2008	99.559	1.90	0.80	0.03	1.52	0.04	0.09	RHS
59	5/21/2008	99.012	1.30	0.70	0.03	0.91	0.02	0.05	RHS
60	5/21/2008	98.950	1.60	0.70	0.025	1.12	0.03	0.07	RHS
CARRIED FORWARD :						369.04	14.67	34.06	

LINTASAN RESOURCES SDN. BHD.
 MAINTENANCE OF FEDERAL ROADS - WEST COAST, SABAH
R01 POTHOLE PATCHING RECORD

DISTRICT: TAMBUNAN
ROUTE NO. 500
ROAD NAME: JLN K. KINABALU - KENINGAU-TENOM
MONTH: April 2008

ITEM	DATE	CHAINAGE	Length (m)	Width (m)	Depth (m)	AREA (m2)	VOLUME (m3)	PREMIX QUANTITY (ton)	REMARKS
BROUGHT FORWARD:						369.04	14.67	34.06	
61	5/21/2008	98.907	1.20	0.70	0.025	0.84	0.02	0.05	RHS
62	5/21/2008	98.897	0.50	0.50	0.025	0.25	0.01	0.02	RHS
63	5/21/2008	97.367	1.50	0.70	0.025	1.05	0.03	0.07	RHS
64	5/21/2008	96.275	1.20	0.80	0.025	0.96	0.02	0.05	RHS
65	5/22/2008	97.150	2.70	1.50	0.075	4.05	0.30	0.70	RHS
66	5/22/2008	96.060	1.20	0.80	0.025	0.96	0.02	0.05	RHS
67	5/22/2008	95.456	1.30	1.00	0.075	1.30	0.10	0.23	RHS
68									
69									
70									
71									
72									
73									
74									
75									
76									
77									
78									
79									
80									
81									
82									
83									
84									
85									
86									
87									
88									
89									
90									
TOTAL :						378.45	15.17	35.23	

LINTASAN RESOURCES SDN. BHD.
 MAINTENANCE OF FEDERAL ROADS - WEST COAST, SABAH
R01 POTHOLE PATCHING RECORD

DISTRICT: KENINGAU
ROUTE NO. 500
ROAD NAME: JLN K. KINABALU - KENINGAU-TENOM
MONTH: May 2008

ITEM	DATE	CHAINAGE	Length (m)	Width (m)	Depth (m)	AREA (m2)	VOLUME (m3)	PREMIX QUANTITY (ton)	REMARKS
BROUGHT FORWARD:						25.31	0.86	1.98	
1	5/8/2008	134.300	3.40	1.50	0.050	5.10	0.26	0.60	LHS
2	5/8/2008	134.248	1.80	0.90	0.025	1.62	0.04	0.09	RHS
3	5/8/2008	134.221	1.00	0.70	0.050	0.70	0.04	0.09	LHS
4	5/8/2008	135.306	1.40	0.80	0.025	1.12	0.03	0.07	LHS
5	5/8/2008	121.360	2.60	0.70	0.025	1.82	0.05	0.12	RHS
6	5/8/2008	119.275	0.70	0.50	0.025	0.35	0.01	0.02	R/ABOUT
7	5/8/2008	119.825	0.70	0.60	0.025	0.42	0.01	0.02	R/ABOUT
8	5/8/2008	105.597	2.00	0.70	0.025	1.40	0.04	0.09	RHS
9	5/9/2008	134.196	3.40	1.00	0.100	3.40	0.34	0.79	LHS
10	5/21/2008	107.200	1.40	1.20	0.025	1.68	0.04	0.09	LHS
11	5/21/2008	104.318	1.20	0.80	0.025	0.96	0.02	0.05	RHS
12	5/21/2008	104.258	0.90	0.70	0.025	0.63	0.02	0.05	RHS
13	5/21/2008	104.250	1.00	0.90	0.025	0.90	0.02	0.05	RHS
14	5/21/2008	104.228	0.50	0.50	0.025	0.25	0.01	0.02	RHS
15	5/21/2008	103.971	3.30	1.00	0.025	3.30	0.08	0.19	LHS
16	5/21/2008	103..969	1.20	0.90	0.025	1.08	0.03	0.07	LHS
17	5/21/2008	100.450	0.90	0.60	0.025	0.54	0.01	0.02	LHS
18	5/22/2008	112.800	1.00	1.00	0.025	1.00	0.03	0.07	LHS
19									
20									
21									
22									
23									
24									
25									
26									
27									
28									
29									
30									
TOTAL						51.58	1.94	4.48	

LINTASAN RESOURCES SDN. BHD.
 MAINTENANCE OF FEDERAL ROADS - WEST COAST, SABAH
R01 POTHOLE PATCHING RECORD

DISTRICT: TENOM
ROUTE NO. 500
ROAD NAME: JLN K. KINABALU - KENINGAU-TENOM
MONTH: May 2008

ITEM	DATE	CHAINAGE	Length (m)	Width (m)	Depth (m)	AREA (m2)	VOLUME (m3)	PREMIX QUANTITY (ton)	REMARKS
BROUGHT FORWARD:						18.99	0.52	1.21	
1	5/9/2008	151.800	2.20	1.20	0.03	2.64	0.07	0.16	RHS
2									
3									
4									
5									
6									
7									
8									
9									
10									
11									
12									
13									
14									
15									
16									
17									
18									
19									
20									
21									
22									
23									
24									
25									
26									
27									
28									
29									
30									
TOTAL						21.63	0.59	1.37	

LINTASAN RESOURCES SDN BHD.
 MAINTENANCE OF FEDERAL ROADS - WEST COAST, SABAH

SUMMARY - POTHOLE PATCHING RECORD

Month: May 2008

ITEM	DISTRICT	ROUTE NO.	ROAD NAME	AREA (m ²)			VOLUME (m ³)			PREMIX QUANTITY (TON)		
				PREVIOUS MONTH	CURRENT MONTH	CUM. MONTH	PREVIOUS MONTH	CURRENT MONTH	CUM. MONTH	PREVIOUS MONTH	CURRENT MONTH	CUM. MONTH
1	Kota Kinabalu	01	Jalan Kota Kinabalu - Kudat	942.05	72.79	1,014.84	32.33	2.73	35.06	75.01	6.34	81.35
2	Tuaran	01	Jalan Kota Kinabalu - Kudat	623.69	37.74	661.43	22.33	1.25	23.58	51.80	2.90	54.70
3	Tuaran	22	Jalan Kota Kinabalu - Sandakan	1,550.24	699.25	2,249.49	56.24	19.26	75.50	130.47	44.69	175.16
4	Tuaran	503	Jalan Berungis - Kota Belud	240.55	-	240.55	7.43	-	7.43	17.24	-	17.24
5	Kota Kinabalu	606	Jalan Susur Sepangar Bay	333.51	77.09	410.60	14.86	2.40	17.26	34.45	5.58	40.03
6	Kota Kinabalu	607	Jalan Masuk Ke Pelabuhan Baru, KK	12.07	-	12.07	0.56	-	0.56	1.31	-	1.31
TOTAL:				3,702.11	886.87	4,588.98	133.75	25.65	159.40	310.28	59.50	369.78

LINTASAN RESOURCES SDN BHD.
 MAINTENANCE OF FEDERAL ROADS - WEST COAST, SABAH

SUMMARY - POTHOLE PATCHING RECORD

Month: May 2008

ITEM	DISTRICT	ROUTE NO.	ROAD NAME	AREA (m ²)			VOLUME (m ³)			PREMIX QUANTITY (TON)		
				PREVIOUS MONTH	CURRENT MONTH	CUM. MONTH	PREVIOUS MONTH	CURRENT MONTH	CUM. MONTH	PREVIOUS MONTH	CURRENT MONTH	CUM. MONTH
1	Kota Kinabalu	01	Jalan Kota Kinabalu - Sindumin	22.29	-	22.29	1.12	-	1.12	2.59	-	2.59
2	Penampang	01	Jalan Kota Kinabalu - Sindumin	469.67	29.63	499.30	23.48	1.48	24.96	54.49	3.44	57.93
3	Papar	01	Jalan Kota Kinabalu - Sindumin	3,127.31	273.98	3,401.29	156.37	13.70	170.07	362.77	31.78	394.55
4	Penampang	500	Jalan Kota Kinabalu - Keningau - Tenom	580.61	38.64	619.25	29.03	1.93	30.96	67.35	4.48	71.83
5	Penampang	501	Jalan Kota Kinabalu - Penampang - Lok Kawi	434.85	120.92	555.77	21.75	6.05	27.80	50.44	14.03	64.47
6	Kota Kinabalu	608	Jalan masuk ke Lapangan Terbang Lama, K.K.	-	-	-	-	-	-	-	-	-
TOTAL:				4,634.73	463.17	5,097.90	231.75	23.16	254.91	537.64	53.73	591.37

LINTASAN RESOURCES SDN. BHD.
MAINTENANCE OF FEDERAL ROADS - WEST COAST, SABAH
R01 POTHOLE PATCHING RECORD

DISTRICT: PENAMPANG

ROUTE NO. 01

ROAD NAME: JALAN KK - SINDUMIN

MONTH: MAY 2008

ITEM	DATE	CHAINAGE	Length (m)	Width (m)	Depth (m)	AREA (m2)	VOLUME (m3)	PREMIX QUANTITY (ton)	REMARKS
BROUGHT FORWARD:						469.67	23.48	54.49	
1	05/05/2008	16.938	1.50	1.20	0.050	1.80	0.09	0.21	RHS
2	05/05/2008	16.942	1.20	0.90	0.050	1.08	0.05	0.13	RHS
3	05/05/2008	16.944	1.40	1.20	0.050	1.68	0.08	0.19	RHS
4	05/05/2008	16.945	0.70	0.50	0.050	0.35	0.02	0.04	RHS
5	05/05/2008	16.945	1.50	1.00	0.050	1.50	0.08	0.17	LHS
6	05/05/2008	16.947	1.50	1.00	0.050	1.50	0.08	0.17	RHS
7	05/05/2008	16.960	1.40	1.10	0.050	1.54	0.08	0.18	RHS
8	05/05/2008	16.965	1.00	1.00	0.050	1.00	0.05	0.12	RHS
9	05/05/2008	16.967	1.30	0.80	0.050	1.04	0.05	0.12	RHS
10	05/05/2008	18.180	1.70	1.00	0.050	1.70	0.09	0.20	RHS
11	05/05/2008	18.245	1.20	0.90	0.050	1.08	0.05	0.13	LHS
12	05/05/2008	18.260	1.20	1.00	0.050	1.20	0.06	0.14	RHS
13	05/05/2008	18.300	1.40	0.90	0.050	1.26	0.06	0.15	RHS
14	05/05/2008	18.310	1.40	1.00	0.050	1.40	0.07	0.16	LHS
15	05/05/2008	18.313	1.20	1.00	0.050	1.20	0.06	0.14	LHS
16	05/05/2008	18.315	1.20	0.70	0.050	0.84	0.04	0.10	LHS
17	05/05/2008	18.320	1.50	1.20	0.050	1.80	0.09	0.21	LHS
18	05/05/2008	18.583	1.30	0.90	0.050	1.17	0.06	0.14	RHS
19	05/05/2008	18.585	1.80	1.00	0.050	1.80	0.09	0.21	RHS
20	05/05/2008	18.590	1.70	0.80	0.050	1.36	0.07	0.16	RHS
21	05/05/2008	19.645	1.40	1.20	0.050	1.68	0.08	0.19	RHS
22	05/05/2008	19.648	1.50	1.10	0.050	1.65	0.08	0.19	RHS
TOTAL:						499.30	24.96	57.93	

LINTASAN RESOURCES SDN. BHD.
MAINTENANCE OF FEDERAL ROADS - WEST COAST, SABAH
R01 POTHOLE PATCHING RECORD

DISTRICT: PAPAR

ROUTE NO. 01

ROAD NAME: JALAN KK - SINDUMIN

MONTH: MAY 2008

ITEM	DATE	CHAINAGE	Length (m)	Width (m)	Depth (m)	AREA (m2)	VOLUME (m3)	PREMIX QUANTITY (ton)	REMARKS
BROUGHT FORWARD:						3,127.31	156.37	362.77	
1	02/05/2008	39.965	1.00	0.80	0.050	0.80	0.04	0.09	LHS
2	02/05/2008	39.970	2.40	1.40	0.050	3.36	0.17	0.39	RHS
3	02/05/2008	40.045	0.80	0.40	0.050	0.32	0.02	0.04	LHS
4	02/05/2008	40.052	0.60	0.60	0.050	0.36	0.02	0.04	LHS
5	02/05/2008	40.065	0.40	0.40	0.050	0.16	0.01	0.02	LHS
6	02/05/2008	40.066	0.60	0.40	0.050	0.24	0.01	0.03	LHS
7	02/05/2008	40.070	0.80	0.60	0.050	0.48	0.02	0.06	LHS
8	02/05/2008	40.074	0.40	0.40	0.050	0.16	0.01	0.02	LHS
9	02/05/2008	40.139	0.60	0.40	0.050	0.24	0.01	0.03	LHS
10	02/05/2008	40.143	0.80	0.60	0.050	0.48	0.02	0.06	LHS
11	02/05/2008	40.145	0.60	0.60	0.050	0.36	0.02	0.04	LHS
12	02/05/2008	40.245	0.40	0.40	0.050	0.16	0.01	0.02	LHS
13	02/05/2008	40.247	0.40	0.40	0.050	0.16	0.01	0.02	LHS
14	02/05/2008	40.249	0.40	0.40	0.050	0.16	0.01	0.02	LHS
15	02/05/2008	40.255	0.60	0.40	0.050	0.24	0.01	0.03	LHS
16	02/05/2008	40.257	0.40	0.40	0.050	0.16	0.01	0.02	LHS
17	02/05/2008	40.267	0.60	0.40	0.050	0.24	0.01	0.03	LHS
18	02/05/2008	40.270	0.40	0.40	0.050	0.16	0.01	0.02	LHS
19	02/05/2008	40.285	1.00	1.00	0.050	1.00	0.05	0.12	LHS
20	02/05/2008	40.303	0.40	0.40	0.050	0.16	0.01	0.02	LHS
21	02/05/2008	40.385	1.00	0.80	0.050	0.80	0.04	0.09	LHS
22	02/05/2008	40.389	0.60	0.40	0.050	0.24	0.01	0.03	LHS
23	02/05/2008	40.397	1.10	0.80	0.050	0.88	0.04	0.10	LHS
24	02/05/2008	40.399	0.60	0.40	0.050	0.24	0.01	0.03	LHS
25	02/05/2008	40.401	0.40	0.40	0.050	0.16	0.01	0.02	LHS
26	02/05/2008	40.403	0.40	0.40	0.050	0.16	0.01	0.02	LHS
27	02/05/2008	40.451	0.80	0.60	0.050	0.48	0.02	0.06	LHS
28	02/05/2008	40.455	0.60	0.60	0.050	0.36	0.02	0.04	LHS
29	02/05/2008	40.471	0.60	0.40	0.050	0.24	0.01	0.03	LHS
30	02/05/2008	40.473	0.40	0.40	0.050	0.16	0.01	0.02	LHS
CARRIED FORWARD:						3,140.43	157.03	364.29	

LINTASAN RESOURCES SDN. BHD.
MAINTENANCE OF FEDERAL ROADS - WEST COAST, SABAH
R01 POTHOLE PATCHING RECORD

DISTRICT: PAPAR

ROUTE NO. 01

ROAD NAME: JALAN KK - SINDUMIN

MONTH: MAY 2008

ITEM	DATE	CHAINAGE	Length (m)	Width (m)	Depth (m)	AREA (m ²)	VOLUME (m ³)	PREMIX QUANTITY (ton)	REMARKS
BROUGHT FORWARD:						3,140.43	157.03	364.29	
31	02/05/2008	40.481	1.40	0.40	0.050	0.56	0.03	0.06	LHS
32	02/05/2008	40.515	0.60	0.60	0.050	0.36	0.02	0.04	LHS
33	02/05/2008	40.521	0.60	0.60	0.050	0.36	0.02	0.04	LHS
34	02/05/2008	40.525	0.80	0.60	0.050	0.48	0.02	0.06	LHS
35	02/05/2008	41.515	0.80	0.80	0.050	0.64	0.03	0.07	RHS
36	02/05/2008	41.505	0.80	0.60	0.050	0.48	0.02	0.06	RHS
37	02/05/2008	41.500	1.00	0.60	0.050	0.60	0.03	0.07	RHS
38	02/05/2008	41.463	1.40	0.80	0.050	1.12	0.06	0.13	RHS
39	02/05/2008	41.461	0.40	0.40	0.050	0.16	0.01	0.02	RHS
40	02/05/2008	41.459	0.40	0.40	0.050	0.16	0.01	0.02	RHS
41	02/05/2008	41.457	0.80	0.80	0.050	0.64	0.03	0.07	RHS
42	02/05/2008	41.455	1.00	0.60	0.050	0.60	0.03	0.07	RHS
43	02/05/2008	41.453	0.60	0.60	0.050	0.36	0.02	0.04	RHS
44	02/05/2008	41.451	0.60	0.40	0.050	0.24	0.01	0.03	RHS
45	02/05/2008	41.449	0.60	0.40	0.050	0.24	0.01	0.03	RHS
46	02/05/2008	41.447	0.60	0.40	0.050	0.24	0.01	0.03	RHS
47	02/05/2008	41.445	0.40	0.40	0.050	0.16	0.01	0.02	RHS
48	02/05/2008	41.432	0.40	0.40	0.050	0.16	0.01	0.02	RHS
49	02/05/2008	41.430	1.00	0.80	0.050	0.80	0.04	0.09	RHS
50	02/05/2008	41.427	2.00	1.00	0.050	2.00	0.10	0.23	RHS
51	02/05/2008	41.425	0.60	0.60	0.050	0.36	0.02	0.04	RHS
52	02/05/2008	41.423	0.80	0.60	0.050	0.48	0.02	0.06	RHS
53	02/05/2008	41.421	1.40	1.00	0.050	1.40	0.07	0.16	RHS
54	02/05/2008	41.385	3.10	1.00	0.050	3.10	0.16	0.36	RHS
55	02/05/2008	34.605	1.60	1.00	0.050	1.60	0.08	0.19	RHS
56	02/05/2008	34.595	1.00	0.70	0.050	0.70	0.04	0.08	RHS
57	02/05/2008	34.560	1.60	1.20	0.050	1.92	0.10	0.22	RHS
58	02/05/2008	34.475	1.20	1.00	0.050	1.20	0.06	0.14	RHS
59	02/05/2008	33.680	1.10	1.00	0.050	1.10	0.06	0.13	RHS
60	02/05/2008	33.675	1.20	0.90	0.050	1.08	0.05	0.13	RHS
CARRIED FORWARD:						3,163.73	158.19	366.99	

LINTASAN RESOURCES SDN. BHD.
MAINTENANCE OF FEDERAL ROADS - WEST COAST, SABAH
R01 POTHOLE PATCHING RECORD

DISTRICT: PAPAR

ROUTE NO. 01

ROAD NAME: JALAN KK - SINDUMIN

MONTH: MAY 2008

ITEM	DATE	CHAINAGE	Length (m)	Width (m)	Depth (m)	AREA (m ²)	VOLUME (m ³)	PREMIX QUANTITY (ton)	REMARKS
BROUGHT FORWARD:						3,163.73	158.19	366.99	
61	02/05/2008	33.673	1.60	1.30	0.050	2.08	0.10	0.24	RHS
62	02/05/2008	33.100	1.70	0.80	0.050	1.36	0.07	0.16	LHS
63	5/3/2008	32.730	1.70	1.20	0.050	2.04	0.10	0.24	LHS
64	5/3/2008	32.725	1.60	1.40	0.050	2.24	0.11	0.26	LHS
65	5/3/2008	32.425	1.60	1.20	0.050	1.92	0.10	0.22	LHS
66	5/3/2008	30.835	1.30	1.00	0.050	1.30	0.07	0.15	RHS
67	5/3/2008	30.828	1.50	1.00	0.050	1.50	0.08	0.17	RHS
68	5/3/2008	27.535	1.00	0.80	0.050	0.80	0.04	0.09	RHS
69	5/3/2008	27.530	1.10	0.80	0.050	0.88	0.04	0.10	RHS
70	5/3/2008	27.525	1.30	1.00	0.050	1.30	0.07	0.15	RHS
71	5/3/2008	27.518	1.90	0.90	0.050	1.71	0.09	0.20	RHS
72	5/3/2008	27.510	1.40	0.80	0.050	1.12	0.06	0.13	RHS
73	5/3/2008	27.508	1.30	0.90	0.050	1.17	0.06	0.14	RHS
74	5/3/2008	27.505	1.80	1.00	0.050	1.80	0.09	0.21	RHS
75	5/3/2008	23.883	1.40	1.00	0.050	1.40	0.07	0.16	RHS
76	5/3/2008	23.880	1.30	1.00	0.050	1.30	0.07	0.15	RHS
77	5/6/2008	44.753	0.80	0.80	0.050	0.64	0.03	0.07	RHS
78	5/6/2008	44.750	1.10	0.80	0.050	0.88	0.04	0.10	RHS
79	5/6/2008	43.643	2.10	1.20	0.050	2.52	0.13	0.29	RHS
80	5/6/2008	39.479	0.80	0.80	0.050	0.64	0.03	0.07	RHS
81	5/6/2008	39.475	0.80	0.80	0.050	0.64	0.03	0.07	RHS
82	5/6/2008	39.473	0.60	0.60	0.050	0.36	0.02	0.04	RHS
83	5/6/2008	39.425	2.10	1.20	0.050	2.52	0.13	0.29	RHS
84	5/6/2008	39.335	0.80	0.60	0.050	0.48	0.02	0.06	RHS
85	5/6/2008	39.333	0.60	0.60	0.050	0.36	0.02	0.04	RHS
86	5/6/2008	39.331	0.80	0.60	0.050	0.48	0.02	0.06	RHS
87	5/6/2008	39.135	0.80	0.80	0.050	0.64	0.03	0.07	RHS
88	5/6/2008	38.390	0.60	0.60	0.050	0.36	0.02	0.04	RHS
89	5/6/2008	38.385	0.60	0.60	0.050	0.36	0.02	0.04	RHS
90	5/6/2008	38.379	3.10	0.80	0.050	2.48	0.12	0.29	RHS
CARRIED FORWARD:						3,201.01	160.06	371.32	

LINTASAN RESOURCES SDN. BHD.
MAINTENANCE OF FEDERAL ROADS - WEST COAST, SABAH
R01 POTHOLE PATCHING RECORD

DISTRICT: PAPAR

ROUTE NO. 01

ROAD NAME: JALAN KK - SINDUMIN

MONTH: MAY 2008

ITEM	DATE	CHAINAGE	Length (m)	Width (m)	Depth (m)	AREA (m ²)	VOLUME (m ³)	PREMIX QUANTITY (ton)	REMARKS
BROUGHT FORWARD:						3,201.01	160.06	371.32	
91	5/6/2008	38.375	0.40	0.40	0.050	0.16	0.01	0.02	RHS
92	5/6/2008	38.373	0.60	0.60	0.050	0.36	0.02	0.04	RHS
93	5/6/2008	38.365	0.80	0.80	0.050	0.64	0.03	0.07	RHS
94	5/6/2008	38.361	0.40	0.40	0.050	0.16	0.01	0.02	LHS
95	5/6/2008	38.359	1.60	0.80	0.050	1.28	0.06	0.15	RHS
96	5/6/2008	38.353	2.40	0.80	0.050	1.92	0.10	0.22	RHS
97	5/6/2008	38.347	2.00	1.00	0.050	2.00	0.10	0.23	RHS
98	5/6/2008	38.345	2.00	1.00	0.050	2.00	0.10	0.23	RHS
99	5/6/2008	38.333	0.80	0.80	0.050	0.64	0.03	0.07	LHS
100	5/6/2008	38.323	1.00	0.80	0.050	0.80	0.04	0.09	LHS
101	5/6/2008	38.295	1.00	0.80	0.050	0.80	0.04	0.09	LHS
102	5/6/2008	37.473	0.80	0.80	0.050	0.64	0.03	0.07	LHS
103	5/7/2008	41.339	1.20	0.60	0.050	0.72	0.04	0.08	RHS
104	5/7/2008	41.341	0.60	0.60	0.050	0.36	0.02	0.04	RHS
105	5/7/2008	41.343	1.00	0.80	0.050	0.80	0.04	0.09	RHS
106	5/7/2008	41.345	0.80	0.80	0.050	0.64	0.03	0.07	RHS
107	5/7/2008	39.621	0.80	0.60	0.050	0.48	0.02	0.06	RHS
108	5/7/2008	39.617	0.80	0.60	0.050	0.48	0.02	0.06	RHS
109	5/7/2008	39.615	0.80	0.40	0.050	0.32	0.02	0.04	RHS
110	5/7/2008	39.605	0.60	0.60	0.050	0.36	0.02	0.04	RHS
111	5/7/2008	39.601	0.80	0.60	0.050	0.48	0.02	0.06	RHS
112	5/7/2008	39.589	0.60	0.40	0.050	0.24	0.01	0.03	RHS
113	5/7/2008	39.570	0.80	0.80	0.050	0.64	0.03	0.07	RHS
114	5/7/2008	39.565	0.60	0.60	0.050	0.36	0.02	0.04	RHS
115	5/7/2008	39.563	0.80	0.60	0.050	0.48	0.02	0.06	RHS
116	5/7/2008	39.561	0.80	0.40	0.050	0.32	0.02	0.04	RHS
117	5/7/2008	39.559	0.80	0.40	0.050	0.32	0.02	0.04	RHS
118	5/7/2008	39.545	0.40	0.40	0.050	0.16	0.01	0.02	RHS
119	5/7/2008	39.485	0.40	0.40	0.050	0.16	0.01	0.02	RHS
120	5/7/2008	39.483	0.60	0.60	0.050	0.36	0.02	0.04	RHS
CARRIED FORWARD:						3,220.09	161.01	373.53	

LINTASAN RESOURCES SDN. BHD.
MAINTENANCE OF FEDERAL ROADS - WEST COAST, SABAH
R01 POTHOLE PATCHING RECORD

DISTRICT: PAPAR

ROUTE NO. 01

ROAD NAME: JALAN KK - SINDUMIN

MONTH: MAY 2008

ITEM	DATE	CHAINAGE	Length (m)	Width (m)	Depth (m)	AREA (m ²)	VOLUME (m ³)	PREMIX QUANTITY (ton)	REMARKS
BROUGHT FORWARD:						3,220.09	161.01	373.53	
121	5/7/2008	39.481	0.60	0.40	0.050	0.24	0.01	0.03	RHS
122	5/7/2008	24.045	0.30	2.00	0.050	0.60	0.03	0.07	LHS
123	5/7/2008	24.046	0.80	0.60	0.050	0.48	0.02	0.06	LHS
124	5/7/2008	24.047	1.00	1.00	0.050	1.00	0.05	0.12	LHS
125	5/7/2008	24.049	2.00	1.00	0.050	2.00	0.10	0.23	RHS
126	5/7/2008	32.537	1.40	1.40	0.050	1.96	0.10	0.23	RHS
127	5/7/2008	32.539	1.80	1.20	0.050	2.16	0.11	0.25	RHS
128	5/7/2008	32.553	1.80	1.20	0.050	2.16	0.11	0.25	RHS
129	5/7/2008	32.557	1.80	1.00	0.050	1.80	0.09	0.21	RHS
130	5/8/2008	23.345	0.80	0.60	0.050	0.48	0.02	0.06	LHS
131	5/8/2008	23.347	2.00	1.40	0.050	2.80	0.14	0.32	LHS
132	5/8/2008	23.349	1.80	1.00	0.050	1.80	0.09	0.21	RHS
133	5/8/2008	23.475	1.20	1.00	0.050	1.20	0.06	0.14	LHS
134	5/8/2008	23.485	0.80	0.80	0.050	0.64	0.03	0.07	LHS
135	5/8/2008	23.625	1.20	0.80	0.050	0.96	0.05	0.11	RHS
136	5/8/2008	23.636	1.40	0.80	0.050	1.12	0.06	0.13	RHS
137	5/8/2008	24.315	1.40	1.00	0.050	1.40	0.07	0.16	LHS
138	5/8/2008	25.025	0.80	0.60	0.050	0.48	0.02	0.06	LHS
139	5/8/2008	25.029	0.60	0.60	0.050	0.36	0.02	0.04	LHS
140	5/8/2008	25.031	0.80	0.80	0.050	0.64	0.03	0.07	LHS
141	5/8/2008	25.033	0.80	0.40	0.050	0.32	0.02	0.04	LHS
142	5/8/2008	25.124	0.60	0.40	0.050	0.24	0.01	0.03	LHS
143	5/8/2008	25.127	0.80	0.60	0.050	0.48	0.02	0.06	LHS
144	5/8/2008	25.129	1.00	0.80	0.050	0.80	0.04	0.09	LHS
145	5/8/2008	25.183	0.80	0.60	0.050	0.48	0.02	0.06	LHS
146	5/8/2008	26.249	1.40	1.00	0.050	1.40	0.07	0.16	LHS
147	5/8/2008	26.645	1.20	1.00	0.050	1.20	0.06	0.14	RHS
148	5/8/2008	29.043	1.10	0.60	0.050	0.66	0.03	0.08	LHS
149	5/8/2008	29.115	0.60	0.60	0.050	0.36	0.02	0.04	LHS
150	5/8/2008	29.119	1.10	0.60	0.050	0.66	0.03	0.08	LHS
CARRIED FORWARD:						3,250.97	162.55	377.11	

LINTASAN RESOURCES SDN. BHD.
MAINTENANCE OF FEDERAL ROADS - WEST COAST, SABAH
R01 POTHOLE PATCHING RECORD

DISTRICT: PAPAR
ROUTE NO. 01
ROAD NAME: JALAN KK - SINDUMIN
MONTH: MAY 2008

ITEM	DATE	CHAINAGE	Length (m)	Width (m)	Depth (m)	AREA (m ²)	VOLUME (m ³)	PREMIX QUANTITY (ton)	REMARKS
BROUGHT FORWARD:						3,250.97	162.55	377.11	
151	5/8/2008	29.121	0.80	0.60	0.050	0.48	0.02	0.06	LHS
152	5/8/2008	30.183	2.40	1.20	0.050	2.88	0.14	0.33	RHS
153	5/8/2008	30.187	3.00	1.40	0.050	4.20	0.21	0.49	RHS
154	5/9/2008	20.685	1.60	1.00	0.050	1.60	0.08	0.19	LHS
155	5/9/2008	20.705	1.80	1.00	0.050	1.80	0.09	0.21	LHS
156	5/9/2008	20.725	1.00	0.80	0.050	0.80	0.04	0.09	LHS
157	5/9/2008	20.791	3.40	0.60	0.050	2.04	0.10	0.24	LHS
158	5/9/2008	20.815	0.80	0.80	0.050	0.64	0.03	0.07	LHS
159	5/9/2008	20.825	0.80	0.60	0.050	0.48	0.02	0.06	LHS
160	5/9/2008	20.855	2.00	1.00	0.050	2.00	0.10	0.23	RHS
161	5/9/2008	20.857	1.00	0.80	0.050	0.80	0.04	0.09	RHS
162	5/9/2008	20.859	0.80	0.80	0.050	0.64	0.03	0.07	RHS
163	5/9/2008	20.879	1.00	0.80	0.050	0.80	0.04	0.09	RHS
164	5/9/2008	20.885	0.80	0.80	0.050	0.64	0.03	0.07	RHS
165	5/9/2008	20.895	0.60	0.60	0.050	0.36	0.02	0.04	RHS
166	5/9/2008	20.899	0.60	0.40	0.050	0.24	0.01	0.03	LHS
167	5/9/2008	20.901	0.80	0.40	0.050	0.32	0.02	0.04	LHS
168	5/9/2008	20.903	0.80	0.80	0.050	0.64	0.03	0.07	LHS
169	5/9/2008	20.904	0.60	0.60	0.050	0.36	0.02	0.04	LHS
170	5/9/2008	20.907	0.60	0.40	0.050	0.24	0.01	0.03	LHS
171	5/9/2008	20.911	0.80	0.40	0.050	0.32	0.02	0.04	LHS
172	5/9/2008	20.913	0.80	0.80	0.050	0.64	0.03	0.07	LHS
173	5/9/2008	20.917	0.40	0.40	0.050	0.16	0.01	0.02	LHS
174	5/9/2008	21.495	0.80	0.80	0.050	0.64	0.03	0.07	LHS
175	5/9/2008	21.859	0.60	0.40	0.050	0.24	0.01	0.03	LHS
176	5/9/2008	21.861	1.40	0.60	0.050	0.84	0.04	0.10	LHS
177	5/9/2008	21.865	1.00	0.80	0.050	0.80	0.04	0.09	LHS
178	5/9/2008	21.749	0.60	0.60	0.050	0.36	0.02	0.04	LHS
179	5/9/2008	21.761	0.60	0.60	0.050	0.36	0.02	0.04	RHS
180	5/9/2008	21.815	0.60	0.60	0.050	0.36	0.02	0.04	LHS
CARRIED FORWARD:						3,277.65	163.89	380.21	

LINTASAN RESOURCES SDN. BHD.
MAINTENANCE OF FEDERAL ROADS - WEST COAST, SABAH
R01 POTHOLE PATCHING RECORD

DISTRICT: PAPAR

ROUTE NO. 01

ROAD NAME: JALAN KK - SINDUMIN

MONTH: MAY 2008

ITEM	DATE	CHAINAGE	Length (m)	Width (m)	Depth (m)	AREA (m ²)	VOLUME (m ³)	PREMIX QUANTITY (ton)	REMARKS
BROUGHT FORWARD:						3,277.65	163.89	380.21	
181	5/10/2008	39.000	1.60	1.50	0.050	2.40	0.12	0.28	RHS
182	5/10/2008	39.603	1.40	0.90	0.050	1.26	0.06	0.15	RHS
183	5/10/2008	39.610	1.30	1.00	0.050	1.30	0.07	0.15	RHS
184	5/10/2008	39.655	1.20	1.00	0.050	1.20	0.06	0.14	RHS
185	5/10/2008	39.657	1.00	0.80	0.050	0.80	0.04	0.09	RHS
186	5/10/2008	39.660	0.90	0.80	0.050	0.72	0.04	0.08	RHS
187	5/10/2008	39.665	1.00	0.80	0.050	0.80	0.04	0.09	RHS
188	5/10/2008	39.670	1.70	1.00	0.050	1.70	0.09	0.20	RHS
189	5/10/2008	39.685	1.40	1.30	0.050	1.82	0.09	0.21	RHS
190	5/10/2008	39.695	1.30	1.00	0.050	1.30	0.07	0.15	RHS
191	5/10/2008	39.700	1.40	0.80	0.050	1.12	0.06	0.13	RHS
192	5/10/2008	39.710	1.90	1.30	0.050	2.47	0.12	0.29	LHS
193	5/10/2008	39.715	1.40	1.30	0.050	1.82	0.09	0.21	LHS
194	5/10/2008	39.717	1.20	1.00	0.050	1.20	0.06	0.14	LHS
195	5/10/2008	39.728	1.70	1.30	0.050	2.21	0.11	0.26	LHS
196	5/10/2008	39.730	2.40	1.80	0.050	4.32	0.22	0.50	LHS
197	5/10/2008	39.733	1.60	1.00	0.050	1.60	0.08	0.19	LHS
198	5/10/2008	39.735	1.80	1.70	0.050	3.06	0.15	0.35	RHS
199	5/10/2008	39.860	1.70	1.20	0.050	2.04	0.10	0.24	RHS
200	5/10/2008	39.865	1.80	1.30	0.050	2.34	0.12	0.27	RHS
201	5/10/2008	39.880	2.20	1.30	0.050	2.86	0.14	0.33	RHS
202	5/10/2008	39.885	0.90	0.70	0.050	0.63	0.03	0.07	RHS
203	5/10/2008	39.888	1.30	1.00	0.050	1.30	0.07	0.15	RHS
204	5/10/2008	39.890	1.10	0.90	0.050	0.99	0.05	0.11	RHS
205	5/10/2008	39.905	1.20	0.90	0.050	1.08	0.05	0.13	RHS
206	5/10/2008	39.910	0.90	0.80	0.050	0.72	0.04	0.08	LHS
207	5/10/2008	39.915	1.30	1.10	0.050	1.43	0.07	0.17	RHS
208	5/10/2008	39.922	1.40	0.60	0.050	0.84	0.04	0.10	RHS
209	5/20/2008	40.860	0.90	0.80	0.050	0.72	0.04	0.08	RHS
210	5/20/2008	40.830	1.40	0.60	0.050	0.84	0.04	0.10	LHS
CARRIED FORWARD:						3,324.54	166.23	385.65	

LINTASAN RESOURCES SDN. BHD.
MAINTENANCE OF FEDERAL ROADS - WEST COAST, SABAH
R01 POTHOLE PATCHING RECORD

DISTRICT: PAPAR

ROUTE NO. 01

ROAD NAME: JALAN KK - SINDUMIN

MONTH: MAY 2008

ITEM	DATE	CHAINAGE	Length (m)	Width (m)	Depth (m)	AREA (m ²)	VOLUME (m ³)	PREMIX QUANTITY (ton)	REMARKS
BROUGHT FORWARD:						3,324.54	166.23	385.65	
211	5/20/2008	40.825	1.00	0.90	0.050	0.90	0.05	0.10	LHS
212	5/20/2008	40.815	1.10	1.00	0.050	1.10	0.06	0.13	LHS
213	5/20/2008	40.805	1.10	0.90	0.050	0.99	0.05	0.11	LHS
214	5/20/2008	40.795	0.90	0.70	0.050	0.63	0.03	0.07	LHS
215	5/20/2008	40.750	0.90	0.80	0.050	0.72	0.04	0.08	RHS
216	5/20/2008	40.685	3.10	1.50	0.050	4.65	0.23	0.54	RHS
217	5/21/2008	41.130	4.60	1.70	0.050	7.82	0.39	0.91	RHS
218	5/21/2008	41.100	1.50	1.00	0.050	1.50	0.08	0.17	RHS
219	5/21/2008	41.095	2.60	1.10	0.050	2.86	0.14	0.33	LHS
220	5/21/2008	41.092	1.50	0.90	0.050	1.35	0.07	0.16	LHS
221	5/21/2008	41.063	1.40	1.00	0.050	1.40	0.07	0.16	LHS
222	5/21/2008	41.060	1.10	0.60	0.050	0.66	0.03	0.08	LHS
223	5/21/2008	41.045	1.80	0.90	0.050	1.62	0.08	0.19	LHS
224	5/21/2008	41.015	1.10	1.00	0.050	1.10	0.06	0.13	LHS
225	5/21/2008	41.010	1.80	0.80	0.050	1.44	0.07	0.17	LHS
226	5/21/2008	40.995	1.00	0.90	0.050	0.90	0.05	0.10	RHS
227	5/21/2008	40.895	1.20	0.90	0.050	1.08	0.05	0.13	RHS
228	5/21/2008	40.885	1.00	0.80	0.050	0.80	0.04	0.09	RHS
229	5/21/2008	40.880	1.10	0.90	0.050	0.99	0.05	0.11	LHS
230	5/21/2008	40.875	1.10	1.00	0.050	1.10	0.06	0.13	LHS
231	5/21/2008	40.873	1.40	0.90	0.050	1.26	0.06	0.15	LHS
232	5/21/2008	40.870	1.20	0.80	0.050	0.96	0.05	0.11	LHS
233	5/21/2008	40.865	1.60	1.00	0.050	1.60	0.08	0.19	RHS
234	5/21/2008	40.633	0.40	0.40	0.050	0.16	0.01	0.02	LHS
235	5/21/2008	40.634	0.40	0.40	0.050	0.16	0.01	0.02	LHS
236	5/21/2008	40.640	0.40	0.40	0.050	0.16	0.01	0.02	LHS
237	5/21/2008	40.645	0.60	0.40	0.050	0.24	0.01	0.03	LHS
238	5/21/2008	40.660	0.60	0.40	0.050	0.24	0.01	0.03	LHS
239	5/21/2008	40.665	0.60	0.40	0.050	0.24	0.01	0.03	LHS
240	5/21/2008	40.670	0.80	0.80	0.050	0.64	0.03	0.07	LHS
CARRIED FORWARD:						3,363.81	168.20	390.20	

LINTASAN RESOURCES SDN. BHD.
MAINTENANCE OF FEDERAL ROADS - WEST COAST, SABAH
R01 POTHOLE PATCHING RECORD

DISTRICT: PAPAR

ROUTE NO. 01

ROAD NAME: JALAN KK - SINDUMIN

MONTH: MAY 2008

ITEM	DATE	CHAINAGE	Length (m)	Width (m)	Depth (m)	AREA (m ²)	VOLUME (m ³)	PREMIX QUANTITY (ton)	REMARKS
BROUGHT FORWARD:						3,363.81	168.20	390.20	
241	5/21/2008	40.671	1.10	0.80	0.050	0.88	0.04	0.10	LHS
242	5/21/2008	40.675	0.60	0.60	0.050	0.36	0.02	0.04	LHS
243	5/21/2008	40.676	0.60	0.60	0.050	0.36	0.02	0.04	LHS
244	5/21/2008	40.823	1.00	1.00	0.050	1.00	0.05	0.12	LHS
245	5/22/2008	41.145	1.00	0.60	0.050	0.60	0.03	0.07	LHS
246	5/22/2008	41.225	0.60	0.60	0.050	0.36	0.02	0.04	LHS
247	5/22/2008	41.229	0.60	0.40	0.050	0.24	0.01	0.03	LHS
248	5/22/2008	41.230	0.60	0.40	0.050	0.24	0.01	0.03	LHS
249	5/22/2008	41.232	0.60	0.60	0.050	0.36	0.02	0.04	LHS
250	5/22/2008	41.233	0.60	0.60	0.050	0.36	0.02	0.04	LHS
251	5/22/2008	41.234	0.60	0.40	0.050	0.24	0.01	0.03	LHS
252	5/22/2008	41.235	0.40	0.40	0.050	0.16	0.01	0.02	LHS
253	5/22/2008	41.455	0.80	0.60	0.050	0.48	0.02	0.06	LHS
254	5/22/2008	41.459	0.60	0.60	0.050	0.36	0.02	0.04	LHS
255	5/22/2008	41.461	0.60	0.40	0.050	0.24	0.01	0.03	LHS
256	5/22/2008	40.463	0.80	0.40	0.050	0.32	0.02	0.04	LHS
257	5/22/2008	40.464	0.60	0.40	0.050	0.24	0.01	0.03	LHS
258	5/23/2008	41.175	0.60	0.60	0.050	0.36	0.02	0.04	LHS
259	5/23/2008	41.176	0.60	0.40	0.050	0.24	0.01	0.03	LHS
260	5/23/2008	41.215	0.40	0.40	0.050	0.16	0.01	0.02	LHS
261	5/23/2008	40.435	0.80	0.60	0.050	0.48	0.02	0.06	RHS
262	5/23/2008	40.438	2.00	1.00	0.050	2.00	0.10	0.23	RHS
263	5/23/2008	40.440	1.20	1.00	0.050	1.20	0.06	0.14	RHS
264	5/23/2008	40.445	0.40	0.40	0.050	0.16	0.01	0.02	RHS
265	5/23/2008	40.453	1.20	1.00	0.050	1.20	0.06	0.14	RHS
266	5/23/2008	40.635	1.20	1.00	0.050	1.20	0.06	0.14	RHS
267	5/23/2008	40.658	1.40	1.20	0.050	1.68	0.08	0.19	RHS
268	5/23/2008	40.660	2.00	1.10	0.050	2.20	0.11	0.26	RHS
269	5/23/2008	40.665	0.80	0.80	0.050	0.64	0.03	0.07	RHS
270	5/24/2008	41.225	0.40	0.40	0.050	0.16	0.01	0.02	RHS
CARRIED FORWARD:						3,382.29	169.12	392.35	

LINTASAN RESOURCES SDN. BHD.
MAINTENANCE OF FEDERAL ROADS - WEST COAST, SABAH
R01 POTHOLE PATCHING RECORD

DISTRICT: PAPAR

ROUTE NO. 01

ROAD NAME: JALAN KK - SINDUMIN

MONTH: MAY 2008

ITEM	DATE	CHAINAGE	Length (m)	Width (m)	Depth (m)	AREA (m ²)	VOLUME (m ³)	PREMIX QUANTITY (ton)	REMARKS
BROUGHT FORWARD:						3,382.29	169.12	392.35	
271	5/24/2008	41.227	0.80	0.60	0.050	0.48	0.02	0.06	RHS
272	5/24/2008	41.233	1.00	0.60	0.050	0.60	0.03	0.07	RHS
273	5/24/2008	41.245	0.60	0.60	0.050	0.36	0.02	0.04	RHS
274	5/24/2008	41.247	0.60	0.40	0.050	0.24	0.01	0.03	RHS
275	5/24/2008	41.249	0.60	0.40	0.050	0.24	0.01	0.03	RHS
276	5/24/2008	41.251	0.60	0.40	0.050	0.24	0.01	0.03	RHS
277	5/24/2008	41.253	0.80	0.60	0.050	0.48	0.02	0.06	RHS
278	5/24/2008	41.255	0.60	0.40	0.050	0.24	0.01	0.03	RHS
279	5/24/2008	42.445	3.80	0.80	0.050	3.04	0.15	0.35	RHS
280	5/24/2008	42.450	0.60	0.60	0.050	0.36	0.02	0.04	LHS
281	5/24/2008	42.655	3.80	1.00	0.050	3.80	0.19	0.44	RHS
282	5/24/2008	42.660	0.60	0.60	0.050	0.36	0.02	0.04	LHS
283	5/24/2008	42.695	0.80	0.60	0.050	0.48	0.02	0.06	LHS
284	5/24/2008	42.655	0.80	0.60	0.050	0.48	0.02	0.06	LHS
285	5/24/2008	43.633	1.00	0.80	0.050	0.80	0.04	0.09	LHS
286	5/24/2008	43.635	3.00	2.00	0.050	6.00	0.30	0.70	LHS
287	5/24/2008	43.637	1.00	0.80	0.050	0.80	0.04	0.09	LHS
TOTAL:						3,401.29	170.07	394.55	

LINTASAN RESOURCES SDN. BHD.
MAINTENANCE OF FEDERAL ROADS - WEST COAST, SABAH
R01 POTHOLE PATCHING RECORD

DISTRICT: PENAMPANG

ROUTE NO. 500

ROAD NAME: JALAN KK - KENINGAU - TENOM

MONTH: MAY 2008

ITEM	DATE	CHAINAGE	Length (m)	Width (m)	Depth (m)	AREA (m ²)	VOLUME (m ³)	PREMIX QUANTITY (ton)	REMARKS
BROUGHT FORWARD:						580.61	29.03	67.35	
1	02/05/2008	19.286	1.00	0.80	0.050	0.80	0.04	0.09	LHS
2	02/05/2008	19.298	1.00	0.80	0.050	0.80	0.04	0.09	LHS
3	02/05/2008	19.299	1.10	0.80	0.050	0.88	0.04	0.10	LHS
4	02/05/2008	19.300	1.00	0.60	0.050	0.60	0.03	0.07	LHS
5	02/05/2008	19.301	1.40	1.00	0.050	1.40	0.07	0.16	LHS
6	02/05/2008	19.302	1.60	1.00	0.050	1.60	0.08	0.19	LHS
7	02/05/2008	19.304	1.60	1.00	0.050	1.60	0.08	0.19	LHS
8	02/05/2008	19.305	0.60	0.60	0.050	0.36	0.02	0.04	LHS
9	02/05/2008	19.700	0.40	0.40	0.050	0.16	0.01	0.02	RHS
10	02/05/2008	19.703	1.00	0.60	0.050	0.60	0.03	0.07	RHS
11	02/05/2008	19.710	1.10	0.80	0.050	0.88	0.04	0.10	LHS
12	02/05/2008	19.712	0.60	0.40	0.050	0.24	0.01	0.03	LHS
13	02/05/2008	20.090	1.00	0.60	0.050	0.60	0.03	0.07	RHS
14	02/05/2008	20.100	1.00	0.80	0.050	0.80	0.04	0.09	RHS
15	02/05/2008	20.110	0.40	0.40	0.050	0.16	0.01	0.02	RHS
16	02/05/2008	21.700	1.40	0.80	0.050	1.12	0.06	0.13	LHS
17	02/05/2008	21.972	5.00	0.80	0.050	4.00	0.20	0.46	RHS
18	02/05/2008	23.146	8.00	0.60	0.050	4.80	0.24	0.56	RHS
19	02/05/2008	23.150	6.00	1.20	0.050	7.20	0.36	0.84	RHS
20	02/05/2008	23.188	1.80	1.00	0.050	1.80	0.09	0.21	RHS
21	02/05/2008	25.967	0.60	0.60	0.050	0.36	0.02	0.04	RHS
22	02/05/2008	25.968	2.80	0.80	0.050	2.24	0.11	0.26	RHS
23	02/05/2008	25.970	1.00	0.60	0.050	0.60	0.03	0.07	RHS
24	02/05/2008	26.010	2.60	0.60	0.050	1.56	0.08	0.18	RHS
25	02/05/2008	26.030	0.60	0.60	0.050	0.36	0.02	0.04	RHS
26	02/05/2008	26.038	0.40	0.40	0.050	0.16	0.01	0.02	LHS
27	02/05/2008	26.040	0.40	0.40	0.050	0.16	0.01	0.02	LHS
28	05/05/2008	3.100	0.80	0.80	0.050	0.64	0.03	0.07	LHS
29	05/05/2008	3.102	0.60	0.60	0.050	0.36	0.02	0.04	LHS
30	05/05/2008	3.104	1.00	0.60	0.050	0.60	0.03	0.07	LHS
CARRIED FORWARD:						618.05	30.90	71.69	

LINTASAN RESOURCES SDN. BHD.
 MAINTENANCE OF FEDERAL ROADS - WEST COAST, SABAH
R01 POT HOLE PATCHING RECORD

DISTRICT: PENAMPANG

ROUTE NO. 500

ROAD NAME: JALAN KK - KENINGAU - TENOM

MONTH: MAY 2008

ITEM	DATE	CHAINAGE	Length (m)	Width (m)	Depth (m)	AREA (m ²)	VOLUME (m ³)	PREMIX QUANTITY (ton)	REMARKS
BROUGHT FORWARD:						618.05	30.90	71.69	
31	05/05/2008	3.106	2.00	0.60	0.050	1.20	0.06	0.14	LHS
TOTAL:						619.25	30.96	71.83	

LINTASAN RESOURCES SDN. BHD.
MAINTENANCE OF FEDERAL ROADS - WEST COAST, SABAH
R01 POT HOLE PATCHING RECORD

DISTRICT: PENAMPANG
ROUTE NO. 501
ROAD NAME: JALAN KK - PENAMPANG - LOKKAWI
MONTH: MAY 2008

ITEM	DATE	CHAINAGE	Length (m)	Width (m)	Depth (m)	AREA (m2)	VOLUME (m3)	PREMIX QUANTITY (ton)	REMARKS
BROUGHT FORWARD:						434.85	21.75	50.44	
1	02/05/2008	3.701	1.00	1.00	0.050	1.00	0.05	0.12	LHS
2	02/05/2008	6.999	1.00	1.00	0.050	1.00	0.05	0.12	RHS
3	02/05/2008	7.925	2.00	0.80	0.050	1.60	0.08	0.19	LHS
4	02/05/2008	7.949	1.60	0.80	0.050	1.28	0.06	0.15	LHS
5	02/05/2008	7.999	1.10	0.80	0.050	0.88	0.04	0.10	LHS
6	02/05/2008	8.399	1.10	1.00	0.050	1.10	0.06	0.13	RHS
7	02/05/2008	8.404	1.10	0.80	0.050	0.88	0.04	0.10	RHS
8	02/05/2008	8.449	2.00	1.00	0.050	2.00	0.10	0.23	RHS
9	02/05/2008	8.469	1.20	0.60	0.050	0.72	0.04	0.08	RHS
10	02/05/2008	8.471	1.00	0.80	0.050	0.80	0.04	0.09	RHS
11	02/05/2008	10.035	1.00	0.60	0.050	0.60	0.03	0.07	LHS
12	02/05/2008	11.026	1.00	0.80	0.050	0.80	0.04	0.09	LHS
13	02/05/2008	11.126	0.80	0.60	0.050	0.48	0.02	0.06	RHS
14	02/05/2008	11.129	0.40	0.40	0.050	0.16	0.01	0.02	LHS
15	02/05/2008	11.131	0.60	0.40	0.050	0.24	0.01	0.03	LHS
16	02/05/2008	11.133	1.60	0.60	0.050	0.96	0.05	0.11	LHS
17	02/05/2008	11.135	0.80	0.80	0.050	0.64	0.03	0.07	LHS
18	02/05/2008	11.137	0.80	0.80	0.050	0.64	0.03	0.07	RHS
19	02/05/2008	11.139	0.60	0.60	0.050	0.36	0.02	0.04	RHS
20	02/05/2008	12.271	1.00	0.80	0.050	0.80	0.04	0.09	RHS
21	02/05/2008	12.273	0.80	0.60	0.050	0.48	0.02	0.06	RHS
22	02/05/2008	12.277	0.80	0.60	0.050	0.48	0.02	0.06	RHS
23	02/05/2008	14.164	0.80	0.80	0.050	0.64	0.03	0.07	LHS
24	02/05/2008	14.259	2.80	0.80	0.050	2.24	0.11	0.26	LHS
25	02/05/2008	14.263	1.40	0.80	0.050	1.12	0.06	0.13	LHS
26	02/05/2008	14.269	2.00	0.60	0.050	1.20	0.06	0.14	LHS
27	02/05/2008	14.271	0.40	0.40	0.050	0.16	0.01	0.02	RHS
28	5/3/2008	17.439	1.00	0.80	0.050	0.80	0.04	0.09	RHS
29	5/3/2008	17.139	0.80	0.80	0.050	0.64	0.03	0.07	RHS
30	5/3/2008	16.997	0.60	0.40	0.050	0.24	0.01	0.03	RHS
CARRIED FORWARD:						459.79	23.00	53.33	

LINTASAN RESOURCES SDN. BHD.
MAINTENANCE OF FEDERAL ROADS - WEST COAST, SABAH
R01 POT HOLE PATCHING RECORD

DISTRICT: PENAMPANG
ROUTE NO. 501
ROAD NAME: JALAN KK - PENAMPANG - LOKKAWI
MONTH: MAY 2008

ITEM	DATE	CHAINAGE	Length (m)	Width (m)	Depth (m)	AREA (m2)	VOLUME (m3)	PREMIX QUANTITY (ton)	REMARKS
BROUGHT FORWARD:						459.79	23.00	53.33	
31	5/3/2008	16.993	0.80	0.60	0.050	0.48	0.02	0.06	RHS
32	5/3/2008	16.991	0.60	0.60	0.050	0.36	0.02	0.04	RHS
33	5/3/2008	16.989	1.20	0.40	0.050	0.48	0.02	0.06	RHS
34	5/3/2008	16.987	3.20	1.00	0.050	3.20	0.16	0.37	RHS
35	5/3/2008	16.985	1.00	0.80	0.050	0.80	0.04	0.09	RHS
36	5/3/2008	16.983	0.80	0.40	0.050	0.32	0.02	0.04	RHS
37	5/3/2008	16.982	1.00	0.80	0.050	0.80	0.04	0.09	RHS
38	5/3/2008	16.980	0.80	0.80	0.050	0.64	0.03	0.07	LHS
39	5/3/2008	16.979	1.60	0.40	0.050	0.64	0.03	0.07	LHS
40	5/3/2008	16.973	0.80	0.60	0.050	0.48	0.02	0.06	LHS
41	5/3/2008	16.971	1.00	0.40	0.050	0.40	0.02	0.05	LHS
42	5/3/2008	16.969	0.80	0.80	0.050	0.64	0.03	0.07	LHS
43	5/3/2008	16.967	0.80	0.60	0.050	0.48	0.02	0.06	LHS
44	5/3/2008	16.965	0.80	0.40	0.050	0.32	0.02	0.04	LHS
45	5/3/2008	16.947	0.60	0.40	0.050	0.24	0.01	0.03	LHS
46	5/3/2008	16.945	0.80	0.60	0.050	0.48	0.02	0.06	RHS
47	5/3/2008	16.943	0.80	0.60	0.050	0.48	0.02	0.06	RHS
48	5/3/2008	16.941	1.00	0.60	0.050	0.60	0.03	0.07	RHS
49	5/3/2008	16.939	1.00	0.80	0.050	0.80	0.04	0.09	RHS
50	5/3/2008	16.935	0.60	0.40	0.050	0.24	0.01	0.03	LHS
51	5/3/2008	16.929	0.60	0.60	0.050	0.36	0.02	0.04	LHS
52	5/3/2008	16.927	0.40	0.40	0.050	0.16	0.01	0.02	LHS
53	5/3/2008	16.917	0.40	0.40	0.050	0.16	0.01	0.02	LHS
54	5/3/2008	16.895	0.40	0.40	0.050	0.16	0.01	0.02	LHS
55	04/05/2008	19.074	1.00	0.40	0.050	0.40	0.02	0.05	LHS
56	04/05/2008	19.071	0.60	0.60	0.050	0.36	0.02	0.04	RHS
57	04/05/2008	19.069	0.80	0.60	0.050	0.48	0.02	0.06	RHS
58	04/05/2008	18.887	0.60	0.40	0.050	0.24	0.01	0.03	RHS
59	04/05/2008	18.099	1.00	0.80	0.050	0.80	0.04	0.09	RHS
60	04/05/2008	17.259	1.20	0.60	0.050	0.72	0.04	0.08	RHS
CARRIED FORWARD:						476.51	23.83	55.27	

LINTASAN RESOURCES SDN. BHD.
MAINTENANCE OF FEDERAL ROADS - WEST COAST, SABAH
R01 POTHOLE PATCHING RECORD

DISTRICT: PENAMPANG
ROUTE NO. 501
ROAD NAME: JALAN KK - PENAMPANG - LOKKAWI
MONTH: MAY 2008

ITEM	DATE	CHAINAGE	Length (m)	Width (m)	Depth (m)	AREA (m2)	VOLUME (m3)	PREMIX QUANTITY (ton)	REMARKS
BROUGHT FORWARD:						476.51	23.83	55.27	
61	04/05/2008	17.072	0.80	0.60	0.050	0.48	0.02	0.06	LHS
62	04/05/2008	17.071	0.60	0.60	0.050	0.36	0.02	0.04	LHS
63	04/05/2008	17.069	1.00	0.60	0.050	0.60	0.03	0.07	LHS
64	04/05/2008	17.063	1.10	0.60	0.050	0.66	0.03	0.08	RHS
65	04/05/2008	17.049	0.80	0.60	0.050	0.48	0.02	0.06	RHS
66	04/05/2008	17.047	0.80	0.60	0.050	0.48	0.02	0.06	RHS
67	04/05/2008	17.046	1.00	0.80	0.050	0.80	0.04	0.09	RHS
68	04/05/2008	17.044	1.40	0.40	0.050	0.56	0.03	0.06	LHS
69	04/05/2008	17.043	0.40	0.40	0.050	0.16	0.01	0.02	LHS
70	04/05/2008	17.042	0.40	0.40	0.050	0.16	0.01	0.02	LHS
71	04/05/2008	17.041	0.80	0.40	0.050	0.32	0.02	0.04	LHS
72	04/05/2008	17.039	0.60	0.40	0.050	0.24	0.01	0.03	LHS
73	04/05/2008	16.835	0.60	0.60	0.050	0.36	0.02	0.04	RHS
74	04/05/2008	16.834	2.00	1.00	0.050	2.00	0.10	0.23	RHS
75	04/05/2008	16.833	1.10	1.00	0.050	1.10	0.06	0.13	RHS
76	04/05/2008	16.832	1.00	1.00	0.050	1.00	0.05	0.12	RHS
77	04/05/2008	16.809	1.20	1.00	0.050	1.20	0.06	0.14	LHS
78	04/05/2008	16.587	1.40	1.00	0.050	1.40	0.07	0.16	RHS
79	04/05/2008	16.583	1.20	0.80	0.050	0.96	0.05	0.11	RHS
80	04/05/2008	13.659	0.60	0.60	0.050	0.36	0.02	0.04	LHS
81	04/05/2008	12.539	1.20	0.80	0.050	0.96	0.05	0.11	RHS
82	04/05/2008	12.529	1.10	0.80	0.050	0.88	0.04	0.10	RHS
83	04/05/2008	11.529	3.00	1.00	0.050	3.00	0.15	0.35	RHS
84	5/5/2008	1.750	4.60	1.00	0.050	4.60	0.23	0.53	RHS
85	5/5/2008	1.751	1.40	0.80	0.050	1.12	0.06	0.13	RHS
86	5/5/2008	1.755	1.20	0.80	0.050	0.96	0.05	0.11	RHS
87	5/5/2008	1.756	1.60	0.60	0.050	0.96	0.05	0.11	RHS
88	5/5/2008	3.101	2.00	0.40	0.050	0.80	0.04	0.09	RHS
89	5/5/2008	3.105	1.00	0.60	0.050	0.60	0.03	0.07	RHS
90	5/5/2008	3.107	1.00	0.60	0.050	0.60	0.03	0.07	RHS
CARRIED FORWARD:						504.67	25.24	58.54	

LINTASAN RESOURCES SDN. BHD.
MAINTENANCE OF FEDERAL ROADS - WEST COAST, SABAH
R01 POT HOLE PATCHING RECORD

DISTRICT: PENAMPANG
ROUTE NO. 501
ROAD NAME: JALAN KK - PENAMPANG - LOKKAWI
MONTH: MAY 2008

ITEM	DATE	CHAINAGE	Length (m)	Width (m)	Depth (m)	AREA (m2)	VOLUME (m3)	PREMIX QUANTITY (ton)	REMARKS
BROUGHT FORWARD:						504.67	25.24	58.54	
91	5/5/2008	3.294	1.40	0.60	0.050	0.84	0.04	0.10	RHS
92	5/5/2008	7.497	2.20	1.20	0.050	2.64	0.13	0.31	RHS
93	5/5/2008	7.499	1.60	1.00	0.050	1.60	0.08	0.19	RHS
94	5/5/2008	7.974	4.00	0.60	0.050	2.40	0.12	0.28	LHS
95	5/5/2008	7.969	2.00	1.40	0.050	2.80	0.14	0.32	LHS
96	5/5/2008	7.384	7.00	0.60	0.050	4.20	0.21	0.49	RHS
97	5/21/2008	8.339	2.60	0.80	0.050	2.08	0.10	0.24	LHS
98	5/21/2008	8.342	3.40	1.20	0.050	4.08	0.20	0.47	LHS
99	5/21/2008	8.344	2.60	1.20	0.050	3.12	0.16	0.36	LHS
100	5/21/2008	8.345	2.80	1.00	0.050	2.80	0.14	0.32	LHS
101	5/21/2008	9.425	2.20	1.00	0.050	2.20	0.11	0.26	LHS
102	5/21/2008	9.893	1.40	1.40	0.050	1.96	0.10	0.23	RHS
103	5/21/2008	10.259	1.00	0.60	0.050	0.60	0.03	0.07	LHS
104	5/21/2008	10.263	2.00	1.80	0.050	3.60	0.18	0.42	LHS
105	5/21/2008	10.265	1.40	1.00	0.050	1.40	0.07	0.16	LHS
106	5/21/2008	10.267	1.20	1.20	0.050	1.44	0.07	0.17	LHS
107	5/21/2008	10.269	0.80	0.60	0.050	0.48	0.02	0.06	LHS
108	5/21/2008	10.271	1.00	0.60	0.050	0.60	0.03	0.07	LHS
109	5/21/2008	10.273	1.20	0.60	0.050	0.72	0.04	0.08	LHS
110	5/21/2008	14.939	0.60	0.60	0.050	0.36	0.02	0.04	RHS
111	5/21/2008	15.125	1.00	1.00	0.050	1.00	0.05	0.12	LHS
112	5/21/2008	15.129	0.40	0.40	0.050	0.16	0.01	0.02	LHS
113	5/21/2008	15.159	0.60	0.60	0.050	0.36	0.02	0.04	RHS
114	5/21/2008	15.169	1.20	0.40	0.050	0.48	0.02	0.06	RHS
115	5/21/2008	15.170	0.80	0.80	0.050	0.64	0.03	0.07	LHS
116	5/21/2008	15.172	0.60	0.60	0.050	0.36	0.02	0.04	LHS
117	5/21/2008	15.173	1.10	0.80	0.050	0.88	0.04	0.10	LHS
118	5/21/2008	15.175	0.80	0.80	0.050	0.64	0.03	0.07	LHS
119	5/21/2008	15.179	0.80	0.80	0.050	0.64	0.03	0.07	LHS
120	5/21/2008	9.891	1.40	1.20	0.050	1.68	0.08	0.19	RHS
CARRIED FORWARD:						551.43	27.58	63.96	

LINTASAN RESOURCES SDN. BHD.
 MAINTENANCE OF FEDERAL ROADS - WEST COAST, SABAH
R01 POT HOLE PATCHING RECORD

DISTRICT: PENAMPANG
ROUTE NO. 501
ROAD NAME: JALAN KK - PENAMPANG - LOKKAWI
MONTH: MAY 2008

ITEM	DATE	CHAINAGE	Length (m)	Width (m)	Depth (m)	AREA (m2)	VOLUME (m3)	PREMIX QUANTITY (ton)	REMARKS
BROUGHT FORWARD:						551.43	27.58	63.96	
121	5/21/2008	9.889	1.60	1.40	0.050	2.24	0.11	0.26	RHS
122	5/21/2008	9.559	1.10	1.00	0.050	1.10	0.06	0.13	RHS
123	5/21/2008	6.857	1.00	1.00	0.050	1.00	0.05	0.12	RHS
TOTAL:						555.77	27.80	64.47	

LINTASAN RESOURCES SDN BHD.
 MAINTENANCE OF FEDERAL ROADS - WEST COAST, SABAH

SUMMARY - POTHOLE PATCHING RECORD

MONTH: MAY 2008

ITEM	DISTRICT	ROUTE NO.	ROAD NAME	AREA (m ²)			VOLUME (m ³)			PREMIX QUANTITY (TON)		
				PREVIOUS MONTH	CURRENT MONTH	CUM. MONTH	PREVIOUS MONTH	CURRENT MONTH	CUM. MONTH	PREVIOUS MONTH	CURRENT MONTH	CUM. MONTH
1	Kota Belud	01	Jalan Kota Kinabalu - Kudat.	496.52	149.84	646.36	24.83	7.49	32.32	57.60	17.38	74.98
2	Kota Marudu	01	Jalan Kota Kinabalu - Kudat	55.43	63.29	118.72	2.77	3.16	5.93	6.43	7.34	13.77
3	Kudat	01	Jalan Kota Kinabalu - Kudat	314.61	35.46	350.07	15.73	1.77	17.50	36.49	4.11	40.60
TOTAL:				866.56	248.59	1,115.15	43.33	12.42	55.75	100.52	28.83	129.35

LINTASAN RESOURCES SDN. BHD.
MAINTENANCE OF FEDERAL ROADS - WEST COAST, SABAH
R01 POTHOLE PATCHING RECORD

DISTRICT: KOTA BELUD
ROUTE NO. 01
ROAD NAME: JALAN KOTA KINABALU - KUDAT
MONTH: MAY 2008

ITEM	DATE	CHAINAGE	Length (m)	Width (m)	Depth (m)	AREA (m2)	VOLUME (m3)	PREMIX QUANTITY (ton)	REMARKS
BROUGHT FORWARD:			-	-	-	496.52	24.83	57.60	
1	02/05/2008	69.780	1.00	1.00	0.05	1.00	0.05	0.12	KINASARABAN
2	02/05/2008	69.781	1.00	1.00	0.05	1.00	0.05	0.12	
3	02/05/2008	100.580	1.00	1.00	0.05	1.00	0.05	0.12	TIMBANG
4	02/05/2008	100.581	1.00	1.00	0.05	1.00	0.05	0.12	
5	02/05/2008	100.582	1.00	0.70	0.05	0.70	0.04	0.08	
6	02/05/2008	100.583	1.00	1.00	0.05	1.00	0.05	0.12	
7	02/05/2008	100.584	1.00	1.00	0.05	1.00	0.05	0.12	
8	02/05/2008	100.585	1.00	1.00	0.05	1.00	0.05	0.12	
9	02/05/2008	100.590	1.00	1.00	0.05	1.00	0.05	0.12	
10	02/05/2008	100.591	1.00	1.00	0.05	1.00	0.05	0.12	
11	02/05/2008	100.592	1.00	1.00	0.05	1.00	0.05	0.12	
12	03/05/2008	100.780	1.00	0.60	0.05	0.60	0.03	0.07	
13	03/05/2008	100.781	1.00	0.50	0.05	0.50	0.03	0.06	
14	03/05/2008	100.782	1.00	1.00	0.05	1.00	0.05	0.12	
15	03/05/2008	100.783	1.00	1.00	0.05	1.00	0.05	0.12	
16	03/05/2008	109.780	1.00	0.80	0.05	0.80	0.04	0.09	ULU KUKUT
17	03/05/2008	109.781	1.00	1.00	0.05	1.00	0.05	0.12	
18	03/05/2008	109.782	1.00	1.00	0.05	1.00	0.05	0.12	
19	03/05/2008	109.783	1.00	1.00	0.05	1.00	0.05	0.12	
20	03/05/2008	109.784	1.00	1.00	0.05	1.00	0.05	0.12	
21	03/05/2008	109.785	1.00	1.00	0.05	1.00	0.05	0.12	
22	05/05/2008	104.280	1.00	0.60	0.05	0.60	0.03	0.07	MANTANAU
23	05/05/2008	104.281	1.00	0.70	0.05	0.70	0.04	0.08	
24	05/05/2008	104.282	1.00	0.70	0.05	0.70	0.04	0.08	
25	05/05/2008	106.280	1.00	0.80	0.05	0.80	0.04	0.09	KUKUT
26	05/05/2008	106.281	0.70	0.70	0.05	0.49	0.02	0.06	
27	05/05/2008	106.282	0.90	0.80	0.05	0.72	0.04	0.08	
28	05/05/2008	106.283	1.00	0.95	0.05	0.95	0.05	0.11	
29	05/05/2008	106.780	1.00	0.80	0.05	0.80	0.04	0.09	
30	05/05/2008	106.781	1.00	0.70	0.05	0.70	0.04	0.08	
CARRIED FORWARD:						522.58	26.13	60.62	

LINTASAN RESOURCES SDN. BHD.
MAINTENANCE OF FEDERAL ROADS - WEST COAST, SABAH
R01 POTHOLE PATCHING RECORD

DISTRICT: KOTA BELUD
ROUTE NO. 01
ROAD NAME: JALAN KOTA KINABALU - KUDAT
MONTH: MAY 2008

ITEM	DATE	CHAINAGE	Length (m)	Width (m)	Depth (m)	AREA (m2)	VOLUME (m3)	PREMIX QUANTITY (ton)	REMARKS
BROUGHT FORWARD:			-	-	-	522.58	26.13	60.62	
31	05/05/2008	106.782	1.00	0.90	0.05	0.90	0.05	0.10	
32	05/05/2008	106.783	1.00	0.60	0.05	0.60	0.03	0.07	
33	05/05/2008	106.980	1.00	1.00	0.05	1.00	0.05	0.12	
34	05/05/2008	106.981	1.00	0.75	0.05	0.75	0.04	0.09	
35	07/05/2008	107.080	1.00	0.90	0.05	0.90	0.05	0.10	
36	07/05/2008	108.081	0.80	0.70	0.05	0.56	0.03	0.06	
37	07/05/2008	107.082	1.00	1.00	0.05	1.00	0.05	0.12	
38	07/05/2008	107.580	1.00	0.70	0.05	0.70	0.04	0.08	
39	07/05/2008	107.581	1.00	0.70	0.05	0.70	0.04	0.08	
40	07/05/2008	107.582	1.00	1.00	0.05	1.00	0.05	0.12	
41	07/05/2008	107.583	1.00	1.00	0.05	1.00	0.05	0.12	
42	07/05/2008	107.780	1.00	0.95	0.05	0.95	0.05	0.11	
43	07/05/2008	107.781	1.00	0.80	0.05	0.80	0.04	0.09	
44	07/05/2008	107.782	1.00	0.85	0.05	0.85	0.04	0.10	
45	07/05/2008	107.783	1.00	0.70	0.05	0.70	0.04	0.08	
46	07/05/2008	107.980	1.00	1.00	0.05	1.00	0.05	0.12	
47	07/05/2008	107.981	1.00	0.80	0.05	0.80	0.04	0.09	
48	07/05/2008	107.982	1.00	1.00	0.05	1.00	0.05	0.12	
49	07/05/2008	107.983	1.00	1.00	0.05	1.00	0.05	0.12	
50	07/05/2008	107.984	1.00	1.00	0.05	1.00	0.05	0.12	KELAWAT
51	08/05/2008	59.780	1.00	1.00	0.05	1.00	0.05	0.12	
52	08/05/2008	59.781	1.00	0.80	0.05	0.80	0.04	0.09	
53	08/05/2008	59.782	1.00	0.70	0.05	0.70	0.04	0.08	
54	08/05/2008	59.980	0.90	0.80	0.05	0.72	0.04	0.08	
55	08/05/2008	59.981	1.00	0.60	0.05	0.60	0.03	0.07	
56	09/05/2008	60.080	1.00	1.00	0.05	1.00	0.05	0.12	
57	09/05/2008	60.180	1.00	0.70	0.05	0.70	0.04	0.08	
58	09/05/2008	60.181	1.00	0.60	0.05	0.60	0.03	0.07	
59	09/05/2008	60.182	0.80	0.70	0.05	0.56	0.03	0.06	
60	09/05/2008	60.183	0.60	0.60	0.05	0.36	0.02	0.04	
CARRIED FORWARD:						546.83	27.35	63.44	

LINTASAN RESOURCES SDN. BHD.
MAINTENANCE OF FEDERAL ROADS - WEST COAST, SABAH
R01 POTHOLE PATCHING RECORD

DISTRICT: KOTA BELUD
ROUTE NO. 01
ROAD NAME: JALAN KOTA KINABALU - KUDAT
MONTH: MAY 2008

ITEM	DATE	CHAINAGE	Length (m)	Width (m)	Depth (m)	AREA (m2)	VOLUME (m3)	PREMIX QUANTITY (ton)	REMARKS
BROUGHT FORWARD:			-	-	-	546.83	27.35	63.44	
61	09/05/2008	60.184	1.00	0.90	0.05	0.90	0.05	0.10	
62	09/05/2008	60.280	0.80	0.50	0.05	0.40	0.02	0.05	
63	09/05/2008	60.281	1.00	0.60	0.05	0.60	0.03	0.07	
64	09/05/2008	60.580	1.00	0.90	0.05	0.90	0.05	0.10	
65	09/05/2008	60.581	1.00	0.80	0.05	0.80	0.04	0.09	
66	10/05/2008	60.582	1.00	0.70	0.05	0.70	0.04	0.08	
67	10/05/2008	62.680	1.00	1.00	0.05	1.00	0.05	0.12	
68	10/05/2008	62.681	1.00	1.00	0.05	1.00	0.05	0.12	
69	10/05/2008	62.682	1.00	0.80	0.05	0.80	0.04	0.09	
70	10/05/2008	62.683	1.00	1.00	0.05	1.00	0.05	0.12	
71	10/05/2008	62.684	1.00	1.00	0.05	1.00	0.05	0.12	
72	10/05/2008	63.780	1.00	0.60	0.05	0.60	0.03	0.07	PAKA-PAKA
73	10/05/2008	63.781	1.00	0.70	0.05	0.70	0.04	0.08	
74	10/05/2008	63.782	1.00	1.00	0.05	1.00	0.05	0.12	
75	12/05/2008	67.880	0.90	0.80	0.05	0.72	0.04	0.08	
76	12/05/2008	67.881	1.00	0.95	0.05	0.95	0.05	0.11	
77	12/05/2008	67.882	0.80	0.80	0.05	0.64	0.03	0.07	
78	12/05/2008	68.280	0.80	0.80	0.05	0.64	0.03	0.07	
79	12/05/2008	68.281	1.00	0.90	0.05	0.90	0.05	0.10	
80	12/05/2008	68.380	0.70	0.60	0.05	0.42	0.02	0.05	
81	12/05/2008	68.880	1.00	0.80	0.05	0.80	0.04	0.09	
82	12/05/2008	69.180	0.90	0.90	0.05	0.81	0.04	0.09	KINASARABAN
83	12/05/2008	69.181	1.00	0.60	0.05	0.60	0.03	0.07	
84	12/05/2008	69.880	0.60	0.60	0.05	0.36	0.02	0.04	
85	13/05/2008	108.080	1.00	1.00	0.05	1.00	0.05	0.12	ULU KUKUT
86	13/05/2008	108.081	1.00	0.90	0.05	0.90	0.05	0.10	
87	13/05/2008	108.180	1.00	1.00	0.05	1.00	0.05	0.12	
88	13/05/2008	108.181	1.00	0.90	0.05	0.90	0.05	0.10	
89	13/05/2008	108.182	1.00	0.70	0.05	0.00	0.00	0.00	
90	13/05/2008	108.183	1.00	0.60	0.05	0.00	0.00	0.00	
CARRIED FORWARD :						568.87	28.45	65.99	

LINTASAN RESOURCES SDN. BHD.
MAINTENANCE OF FEDERAL ROADS - WEST COAST, SABAH
R01 POTHOLE PATCHING RECORD

DISTRICT: KOTA BELUD
ROUTE NO. 01
ROAD NAME: JALAN KOTA KINABALU - KUDAT
MONTH: MAY 2008

ITEM	DATE	CHAINAGE	Length (m)	Width (m)	Depth (m)	AREA (m2)	VOLUME (m3)	PREMIX QUANTITY (ton)	REMARKS
BROUGHT FORWARD:			-	-	-	568.87	28.45	65.99	
91	13/05/2008	108.184	1.00	1.00	0.05	1.00	0.05	0.12	
92	13/05/2008	108.280	0.80	0.70	0.05	0.56	0.03	0.06	
93	13/05/2008	108.281	0.60	0.60	0.05	0.36	0.02	0.04	
94	13/05/2008	108.282	0.70	0.50	0.05	0.35	0.02	0.04	
95	13/05/2008	108.283	0.70	0.60	0.05	0.42	0.02	0.05	
96	13/05/2008	108.380	0.80	0.60	0.05	0.48	0.02	0.06	
97	13/05/2008	108.381	0.60	0.50	0.05	0.30	0.02	0.03	
98	13/05/2008	108.382	1.00	0.70	0.05	0.70	0.04	0.08	
99	13/05/2008	108.383	1.00	0.90	0.05	0.90	0.05	0.10	
100	13/05/2008	108.480	1.00	1.00	0.05	1.00	0.05	0.12	
101	13/05/2008	108.481	1.00	1.20	0.05	1.20	0.06	0.14	
102	15/05/2008	108.580	1.00	0.70	0.05	0.70	0.04	0.08	ULU KUKUT
103	15/05/2008	108.581	1.00	1.00	0.05	1.00	0.05	0.12	
104	15/05/2008	108.680	1.05	1.00	0.05	1.05	0.05	0.12	
105	15/05/2008	108.681	1.00	1.00	0.05	1.00	0.05	0.12	
106	15/05/2008	108.980	1.00	0.80	0.05	0.80	0.04	0.09	
107	15/05/2008	108.981	1.00	1.00	0.05	1.00	0.05	0.12	
108	15/05/2008	108.982	1.00	0.60	0.05	0.60	0.03	0.07	
109	15/05/2008	108.983	1.00	0.50	0.05	0.50	0.03	0.06	
110	15/05/2008	109.180	1.00	0.90	0.05	0.90	0.05	0.10	
111	15/05/2008	109.181	1.10	1.00	0.05	1.10	0.06	0.13	
112	15/05/2008	109.182	1.00	1.00	0.05	1.00	0.05	0.12	
113	15/05/2008	109.380	1.00	1.00	0.05	1.00	0.05	0.12	
114	15/05/2008	109.381	1.00	1.00	0.05	1.00	0.05	0.12	
115	15/05/2008	109.382	1.00	1.00	0.05	1.00	0.05	0.12	
116	15/05/2008	109.383	1.00	1.00	0.05	1.00	0.05	0.12	
117	15/05/2008	109.384	1.00	1.00	0.05	1.00	0.05	0.12	
118	15/05/2008	109.385	1.00	0.90	0.05	0.90	0.05	0.10	
119	16/05/2008	69.980	1.00	0.60	0.05	0.60	0.03	0.07	KINASARABAN
120	16/05/2008	69.981	1.00	0.70	0.05	0.70	0.04	0.08	
CARRIED FORWARD :						592.99	29.65	68.79	

LINTASAN RESOURCES SDN. BHD.
MAINTENANCE OF FEDERAL ROADS - WEST COAST, SABAH
R01 POTHOLE PATCHING RECORD

DISTRICT: KOTA BELUD
ROUTE NO. 01
ROAD NAME: JALAN KOTA KINABALU - KUDAT
MONTH: MAY 2008

ITEM	DATE	CHAINAGE	Length (m)	Width (m)	Depth (m)	AREA (m2)	VOLUME (m3)	PREMIX QUANTITY (ton)	REMARKS
BROUGHT FORWARD:			-	-	-	592.99	29.65	68.79	
121	16/05/2008	69.982	1.00	0.95	0.05	0.95	0.05	0.11	TMN NIKMAT
122	16/05/2008	70.080	1.00	0.60	0.05	0.60	0.03	0.07	
123	16/05/2008	70.081	1.00	0.50	0.05	0.50	0.03	0.06	
124	16/05/2008	70.082	1.00	0.90	0.05	0.90	0.05	0.10	
125	16/05/2008	70.083	1.00	0.95	0.05	0.95	0.05	0.11	
126	16/05/2008	70.180	1.00	1.10	0.05	1.10	0.06	0.13	
127	16/05/2008	71.580	1.00	0.60	0.05	0.60	0.03	0.07	
128	16/05/2008	71.581	1.00	1.00	0.05	1.00	0.05	0.12	
129	16/05/2008	71.582	1.00	0.90	0.05	0.90	0.05	0.10	
130	16/05/2008	71.583	0.90	0.90	0.05	0.81	0.04	0.09	
131	16/05/2008	71.680	1.00	0.80	0.05	0.80	0.04	0.09	
132	16/05/2008	71.681	1.00	0.70	0.05	0.70	0.04	0.08	
133	16/05/2008	71.682	1.00	1.00	0.05	1.00	0.05	0.12	
134	19/05/2008	89.980	1.00	1.00	0.05	1.00	0.05	0.12	KAWANG-KAWANG
135	19/05/2008	89.981	1.00	1.00	0.05	1.00	0.05	0.12	
136	19/05/2008	90.380	1.00	0.95	0.05	0.95	0.05	0.11	KG.KEGURAAAN
137	19/05/2008	90.381	0.80	0.70	0.05	0.56	0.03	0.06	
138	19/05/2008	91.480	1.00	0.80	0.05	0.80	0.04	0.09	PANDASAN
139	19/05/2008	91.481	1.00	0.70	0.05	0.70	0.04	0.08	
140	19/05/2008	97.180	1.00	0.70	0.05	0.70	0.04	0.08	
141	19/05/2008	97.181	1.00	0.60	0.05	0.60	0.03	0.07	
142	19/05/2008	97.182	1.00	1.00	0.05	1.00	0.05	0.12	
143	19/05/2008	108.680	1.00	0.90	0.05	0.90	0.05	0.10	ULU KUKUT
144	19/05/2008	108.681	1.00	0.70	0.05	0.70	0.04	0.08	
145	19/05/2008	108.682	1.00	0.70	0.05	0.70	0.04	0.08	
146	22/05/2008	104.180	1.00	1.00	0.05	1.00	0.05	0.12	MANTANAU
147	22/05/2008	104.181	1.00	0.70	0.05	0.70	0.04	0.08	
148	22/05/2008	104.182	1.00	0.80	0.05	0.80	0.04	0.09	
149	22/05/2008	104.380	0.70	0.70	0.05	0.49	0.02	0.06	
150	22/05/2008	104.381	0.60	0.50	0.05	0.30	0.02	0.03	
CARRIED FORWARD :						616.70	30.84	71.54	

LINTASAN RESOURCES SDN. BHD.
MAINTENANCE OF FEDERAL ROADS - WEST COAST, SABAH
R01 POTHOLE PATCHING RECORD

DISTRICT: KOTA BELUD
ROUTE NO. 01
ROAD NAME: JALAN KOTA KINABALU - KUDAT
MONTH: MAY 2008

ITEM	DATE	CHAINAGE	Length (m)	Width (m)	Depth (m)	AREA (m2)	VOLUME (m3)	PREMIX QUANTITY (ton)	REMARKS
BROUGHT FORWARD:			-	-	-	616.70	30.84	71.54	
151	22/05/2008	104.382	1.00	0.90	0.05	0.90	0.05	0.10	
152	22/05/2008	104.383	1.00	0.80	0.05	0.80	0.04	0.09	
153	26/05/2008	104.580	1.00	0.90	0.05	0.90	0.05	0.10	
154	26/05/2008	104.581	1.00	0.80	0.05	0.80	0.04	0.09	
155	26/05/2008	104.582	1.00	1.00	0.05	1.00	0.05	0.12	
156	26/05/2008	104.680	1.00	0.80	0.05	0.80	0.04	0.09	
157	26/05/2008	104.681	1.00	0.40	0.05	0.40	0.02	0.05	
158	26/05/2008	104.682	1.00	0.70	0.05	0.70	0.04	0.08	
159	26/05/2008	104.683	1.00	0.50	0.05	0.50	0.03	0.06	
160	26/05/2008	104.780	1.00	1.00	0.05	1.00	0.05	0.12	
161	26/05/2008	104.781	1.00	1.00	0.05	1.00	0.05	0.12	
162	26/05/2008	104.782	1.00	0.90	0.05	0.90	0.05	0.10	
163	26/05/2008	104.783	1.00	0.80	0.05	0.80	0.04	0.09	
164	26/05/2008	104.784	1.00	0.80	0.05	0.80	0.04	0.09	
165	26/05/2008	104.785	1.00	1.00	0.05	1.00	0.05	0.12	
166	27/05/2008	110.480	1.00	0.70	0.05	0.70	0.04	0.08	
167	27/05/2008	110.481	1.00	0.80	0.05	0.80	0.04	0.09	
168	27/05/2008	110.482	1.00	1.00	0.05	1.00	0.05	0.12	
169	27/05/2008	110.483	1.00	1.00	0.05	1.00	0.05	0.12	
170	27/05/2008	110.484	1.00	1.00	0.05	1.00	0.05	0.12	
171	27/05/2008	110.485	1.00	1.00	0.05	1.00	0.05	0.12	
172	28/05/2008	109.580	1.00	0.40	0.05	0.40	0.02	0.05	
173	28/05/2008	109.581	1.00	0.60	0.05	0.60	0.03	0.07	
174	28/05/2008	109.582	1.00	0.70	0.05	0.70	0.04	0.08	
175	28/05/2008	109.680	1.00	0.90	0.05	0.90	0.05	0.10	
176	28/05/2008	109.681	1.00	1.00	0.05	1.00	0.05	0.12	
177	28/05/2008	109.682	1.00	0.80	0.05	0.80	0.04	0.09	
178	28/05/2008	109.683	1.00	0.70	0.05	0.70	0.04	0.08	
179	28/05/2008	109.684	0.80	0.70	0.05	0.56	0.03	0.06	
180	29/05/2008	109.780	1.00	0.80	0.05	0.80	0.04	0.09	
CARRIED FORWARD :						640.96	32.05	74.36	

LINTASAN RESOURCES SDN. BHD.
MAINTENANCE OF FEDERAL ROADS - WEST COAST, SABAH
R01 POTHOLE PATCHING RECORD

DISTRICT: KOTA BELUD
ROUTE NO. 01
ROAD NAME: JALAN KOTA KINABALU - KUDAT
MONTH: MAY 2008

ITEM	DATE	CHAINAGE	Length (m)	Width (m)	Depth (m)	AREA (m ²)	VOLUME (m ³)	PREMIX QUANTITY (ton)	REMARKS
BROUGHT FORWARD:			-	-	-	640.96	32.05	74.36	
181	29/05/2008	109.781	1.00	0.70	0.05	0.70	0.04	0.08	
182	29/05/2008	109.782	1.00	1.00	0.05	1.00	0.05	0.12	
183	29/05/2008	109.783	1.00	0.60	0.05	0.60	0.03	0.07	
184	29/05/2008	109.880	1.00	0.70	0.05	0.70	0.04	0.08	
185	29/05/2008	109.881	1.00	0.80	0.05	0.80	0.04	0.09	
186	29/05/2008	109.882	1.00	0.60	0.05	0.60	0.03	0.07	
187	29/05/2008	109.883	1.00	1.00	0.05	1.00	0.05	0.12	
188									
189									
190									
191									
192									
193									
194									
195									
196									
197									
198									
199									
200									
201									
202									
203									
204									
205									
206									
207									
208									
209									
210									
BALANCE END OF MAY :						646.36	32.32	74.98	

847	4/29/2008	24.085	2.30	1.40	0.050	3.22	0.16	0.37	RHS
848	4/29/2008	24.082	1.80	1.00	0.050	1.80	0.09	0.21	RHS
849	4/29/2008	24.075	1.60	1.10	0.050	1.76	0.09	0.20	RHS
850	4/29/2008	25.190	0.80	0.50	0.050	0.40	0.02	0.05	RHS
851	4/29/2008	25.185	4.10	3.10	0.050	12.71	0.64	1.47	RHS
TOTAL:						3,127.31	156.37	362.77	

LINTASAN RESOURCES SDN. BHD.
MAINTENANCE OF FEDERAL ROADS - WEST COAST, SABAH
R01 POTHOLE PATCHING RECORD

DISTRICT: KOTA MARUDU
ROUTE NO. 01
ROAD NAME: JALAN KOTA KINABALU - KUDAT
MONTH: MAY 2008

ITEM	DATE	CHAINAGE	Length (m)	Width (m)	Depth (m)	AREA (m2)	VOLUME (m3)	PREMIX QUANTITY (ton)	REMARKS
BROUGHT FORWARD:			-	-	-	55.43	2.77	6.43	
1	03/05/2008	113.400	1.00	1.00	0.05	1.00	0.05	0.12	MANGGARIS 2
2	03/05/2008	113.401	1.00	0.75	0.05	0.75	0.04	0.09	
3	03/05/2008	113.402	1.00	1.00	0.05	1.00	0.05	0.12	
4	03/05/2008	113.403	1.00	1.00	0.05	1.00	0.05	0.12	
5	03/05/2008	113.480	1.00	0.85	0.05	0.85	0.04	0.10	
6	03/05/2008	113.481	1.00	1.00	0.05	1.00	0.05	0.12	
7	03/05/2008	113.482	1.00	1.00	0.05	1.00	0.05	0.12	
8	05/05/2008	113.300	1.10	0.95	0.05	1.05	0.05	0.12	
9	05/05/2008	113.301	1.00	1.00	0.05	1.00	0.05	0.12	
10	05/05/2008	113.302	1.00	1.00	0.05	1.00	0.05	0.12	
11	05/05/2008	113.080	1.00	0.85	0.05	0.85	0.04	0.10	
12	05/05/2008	113.081	1.00	0.70	0.05	0.70	0.04	0.08	
13	05/05/2008	113.082	1.00	0.80	0.05	0.80	0.04	0.09	
14	06/05/2008	120.600	1.00	1.00	0.05	1.00	0.05	0.12	KG.TONSOM
15	06/05/2008	120.680	1.00	0.70	0.05	0.70	0.04	0.08	
16	06/05/2008	120.681	1.00	0.80	0.05	0.80	0.04	0.09	
17	06/05/2008	118.280	1.00	0.70	0.05	0.70	0.04	0.08	
18	06/05/2008	118.281	1.00	0.80	0.05	0.80	0.04	0.09	
19	07/06/2008	114.400	1.00	0.80	0.05	0.80	0.04	0.09	
20	07/06/2008	114.401	1.00	1.00	0.05	1.00	0.05	0.12	
21	07/06/2008	114.402	1.00	1.00	0.05	1.00	0.05	0.12	
22	07/06/2008	114.480	1.00	0.60	0.05	0.60	0.03	0.07	
23	07/06/2008	114.481	0.70	0.70	0.05	0.49	0.02	0.06	
24	07/06/2008	114.482	0.80	0.80	0.05	0.64	0.03	0.07	
25	07/06/2008	114.482	1.00	1.00	0.05	1.00	0.05	0.12	
26	12/05/2008	134.530	1.00	0.80	0.05	0.80	0.04	0.09	KG.BIRAAAN
27	12/05/2008	147.232	0.70	0.60	0.05	0.42	0.02	0.05	
28	12/05/2008	147.132	0.80	0.70	0.05	0.56	0.03	0.06	
29	12/05/2008	147.133	1.00	1.00	0.05	1.00	0.05	0.12	
30	13/05/2008	116.700	1.00	0.70	0.05	0.70	0.04	0.08	MANGGARIS 2
CARRIED FORWARD :						80.44	4.02	9.33	

LINTASAN RESOURCES SDN. BHD.
MAINTENANCE OF FEDERAL ROADS - WEST COAST, SABAH
R01 POTHOLE PATCHING RECORD

DISTRICT: KOTA MARUDU
ROUTE NO. 01
ROAD NAME: JALAN KOTA KINABALU - KUDAT
MONTH: MAY 2008

ITEM	DATE	CHAINAGE	Length (m)	Width (m)	Depth (m)	AREA (m2)	VOLUME (m3)	PREMIX QUANTITY (ton)	REMARKS
BROUGHT FORWARD:			-	-	-	80.44	4.02	9.33	
31	13/05/2008	116.701	1.00	1.00	0.05	1.00	0.05	0.12	
32	13/05/2008	116.702	1.00	1.00	0.05	1.00	0.05	0.12	
33	13/05/2008	116.703	1.00	1.00	0.05	1.00	0.05	0.12	
34	13/05/2008	116.704	1.00	1.00	0.05	1.00	0.05	0.12	
35	13/05/2008	117.738	0.70	0.70	0.05	0.49	0.02	0.06	
36	13/05/2008	117.739	1.00	0.70	0.05	0.70	0.04	0.08	
37	13/05/2008	117.740	1.00	1.00	0.05	1.00	0.05	0.12	
38	13/05/2008	117.741	1.00	0.90	0.05	0.90	0.05	0.10	
39	13/05/2008	117.742	1.00	0.70	0.05	0.70	0.04	0.08	
40	15/05/2008	118.280	1.00	0.70	0.05	0.70	0.04	0.08	
41	15/05/2008	118.281	1.00	1.00	0.05	1.00	0.05	0.12	
42	15/05/2008	119.780	0.80	0.70	0.05	0.56	0.03	0.06	
43	15/05/2008	119.781	1.00	0.70	0.05	0.70	0.04	0.08	
44	15/05/2008	119.782	1.00	1.00	0.05	1.00	0.05	0.12	
45	15/05/2008	123.300	1.00	1.00	0.05	1.00	0.05	0.12	
46	15/05/2008	123.310	1.00	1.00	0.05	1.00	0.05	0.12	
47	17/05/2008	113.320	1.00	1.00	0.05	1.00	0.05	0.12	
48	17/05/2008	113.321	1.00	0.60	0.05	0.60	0.03	0.07	
49	17/05/2008	113.322	1.00	1.00	0.05	1.00	0.05	0.12	
50	17/05/2008	113.323	1.00	0.60	0.05	0.60	0.03	0.07	
51	17/05/2008	113.500	1.00	0.80	0.05	0.80	0.04	0.09	
52	17/05/2008	113.520	1.00	1.00	0.05	1.00	0.05	0.12	
53	17/05/2008	113.521	0.80	0.80	0.05	0.64	0.03	0.07	
54	21/05/2008	134.032	0.80	1.00	0.05	0.80	0.04	0.09	KG.MANGGARIS
55	21/05/2008	134.033	0.70	0.80	0.05	0.56	0.03	0.06	
56	21/05/2008	134.732	1.00	0.70	0.05	0.70	0.04	0.08	
57	21/05/2008	134.733	1.00	0.70	0.05	0.70	0.04	0.08	
58	21/05/2008	134.734	1.00	0.60	0.05	0.60	0.03	0.07	
59	21/05/2008	134.735	1.00	1.00	0.05	1.00	0.05	0.12	
60	21/05/2008	136.730	0.90	1.00	0.05	0.90	0.05	0.10	TANAH MERAH
CARRIED FORWARD :						105.09	5.25	12.19	

LINTASAN RESOURCES SDN. BHD.
MAINTENANCE OF FEDERAL ROADS - WEST COAST, SABAH
R01 POTHOLE PATCHING RECORD

DISTRICT: KOTA MARUDU
ROUTE NO. 01
ROAD NAME: JALAN KOTA KINABALU - KUDAT
MONTH: MAY 2008

ITEM	DATE	CHAINAGE	Length (m)	Width (m)	Depth (m)	AREA (m2)	VOLUME (m3)	PREMIX QUANTITY (ton)	REMARKS
BROUGHT FORWARD:			-	-	-	105.09	5.25	12.19	
61	21/05/2008	136.732	1.00	0.90	0.05	0.90	0.05	0.10	
62	23/05/2008	137.532	0.80	0.80	0.05	0.64	0.03	0.07	
63	23/05/2008	137.533	0.70	0.60	0.05	0.42	0.02	0.05	
64	23/05/2008	138.132	1.00	1.00	0.05	1.00	0.05	0.12	
65	23/05/2008	138.133	1.00	1.00	0.05	1.00	0.05	0.12	
66	23/05/2008	138.134	1.00	0.50	0.05	0.50	0.03	0.06	
67	23/05/2008	138.432	0.90	0.90	0.05	0.81	0.04	0.09	
68	23/05/2008	138.433	1.00	0.90	0.05	0.90	0.05	0.10	
69	27/05/2008	140.800	0.80	0.70	0.05	0.56	0.03	0.06	
70	27/05/2008	112.980	1.00	0.60	0.05	0.60	0.03	0.07	MANGGARIS
71	27/05/2008	112.981	1.00	0.80	0.05	0.80	0.04	0.09	
72	27/05/2008	116.780	1.00	1.00	0.05	1.00	0.05	0.12	
73	27/05/2008	116.781	1.00	1.00	0.05	1.00	0.05	0.12	
74	27/05/2008	116.782	1.00	0.80	0.05	0.80	0.04	0.09	
75	27/05/2008	116.783	1.00	0.80	0.05	0.80	0.04	0.09	
76	27/05/2008	116.784	1.00	0.90	0.05	0.90	0.05	0.10	
77	27/05/2008	116.785	1.00	1.00	0.05	1.00	0.05	0.12	
78									
79									
80									
81									
82									
83									
84									
85									
86									
87									
88									
89									
90									
BALANCE END OF MAY :						118.72	5.93	13.77	

LINTASAN RESOURCES SDN. BHD.
MAINTENANCE OF FEDERAL ROADS - WEST COAST, SABAH
R01 POTHOLE PATCHING RECORD

DISTRICT: KUDAT
ROUTE NO. 01
ROAD NAME: JALAN KOTA KINABALU - KUDAT
MONTH: MAY 2008

ITEM	DATE	CHAINAGE	Length (m)	Width (m)	Depth (m)	AREA (m2)	VOLUME (m3)	PREMIX QUANTITY (ton)	REMARKS
BROUGHT FORWARD:			-	-	-	314.61	15.73	36.49	
1	06/05/2008	185.732	0.60	0.60	0.05	0.36	0.02	0.04	KG.BAK-BAK
2	06/05/2008	176.632	1.00	0.70	0.05	0.70	0.04	0.08	SG.KARANG
3	06/05/2008	176.63	1.00	0.90	0.05	0.90	0.05	0.10	
4	06/05/2008	176.634	1.00	1.00	0.05	1.00	0.05	0.12	
5	06/05/2008	176.635	1.00	1.00	0.05	1.00	0.05	0.12	
6	06/05/2008	167.632	0.70	0.50	0.05	0.35	0.02	0.04	SIKUATI
7	06/05/2008	167.633	1.00	0.70	0.05	0.70	0.04	0.08	
8	06/05/2008	167.634	0.90	0.90	0.05	0.81	0.04	0.09	
9	06/05/2008	167.532	1.00	0.70	0.05	0.70	0.04	0.08	
10	06/05/2008	167.532	1.00	1.00	0.05	1.00	0.05	0.12	
11	06/05/2008	146.232	1.00	0.60	0.05	0.60	0.03	0.07	MATUNGGONG
12	06/05/2008	146.233	1.00	0.95	0.05	0.95	0.05	0.11	
13	06/05/2008	146.234	1.00	1.00	0.05	1.00	0.05	0.12	
14	09/05/2008	143.032	1.00	0.70	0.05	0.70	0.04	0.08	MOLONG - KOLONG
15	09/05/2008	143.033	1.00	0.80	0.05	0.80	0.04	0.09	
16	09/05/2008	143.034	0.80	0.60	0.05	0.48	0.02	0.06	
17	09/05/2008	143.035	0.80	0.70	0.05	0.56	0.03	0.06	
18	09/05/2008	144.532	1.00	1.00	0.05	1.00	0.05	0.12	MATUNGGONG LAMA
19	09/05/2008	144.533	1.00	0.90	0.05	0.90	0.05	0.10	
20	09/05/2008	144.534	1.00	1.00	0.05	1.00	0.05	0.12	
21	09/05/2008	144.535	1.00	1.00	0.05	1.00	0.05	0.12	
22	09/05/2008	155.500	0.70	0.70	0.05	0.49	0.02	0.06	TAMBARULAN
23	10/05/2008	155.530	1.00	1.00	0.05	1.00	0.05	0.12	
24	10/05/2008	155.531	1.00	1.00	0.05	1.00	0.05	0.12	
25	10/05/2008	155.532	1.00	1.00	0.05	1.00	0.05	0.12	
26	10/05/2008	155.632	1.00	0.60	0.05	0.60	0.03	0.07	
27	10/05/2008	155.633	1.00	0.80	0.05	0.80	0.04	0.09	
28	10/05/2008	155.634	1.00	1.00	0.05	1.00	0.05	0.12	
29	10/05/2008	155.635	1.00	1.00	0.05	1.00	0.05	0.12	
30	14/05/2008	156.332	1.00	1.00	0.05	1.00	0.05	0.12	
CARRIED FORWARD :						339.01	16.95	39.32	

LINTASAN RESOURCES SDN. BHD.
MAINTENANCE OF FEDERAL ROADS - WEST COAST, SABAH
R01 POTHOLE PATCHING RECORD

DISTRICT: KUDAT
ROUTE NO. 01
ROAD NAME: JALAN KOTA KINABALU - KUDAT
MONTH: MAY 2008

ITEM	DATE	CHAINAGE	Length (m)	Width (m)	Depth (m)	AREA (m2)	VOLUME (m3)	PREMIX QUANTITY (ton)	REMARKS
BROUGHT FORWARD:			-	-	-	339.01	16.95	39.32	
31	14/05/2008	156.333	1.00	1.00	0.05	1.00	0.05	0.12	
32	14/05/2008	156.334	1.00	0.90	0.05	0.90	0.05	0.10	
33	14/05/2008	156.335	1.10	1.00	0.05	1.10	0.06	0.13	
34	14/05/2008	156.431	1.00	0.60	0.05	0.60	0.03	0.07	
35	14/05/2008	156.432	1.00	0.80	0.05	0.80	0.04	0.09	
36	14/05/2008	156.433	1.00	1.00	0.05	1.00	0.05	0.12	
37	14/05/2008	156.434	1.00	1.00	0.05	1.00	0.05	0.12	
38	14/05/2008	156.435	1.00	0.70	0.05	0.70	0.04	0.08	
39	14/05/2008	156.400	1.00	1.00	0.05	1.00	0.05	0.12	
40	14/05/2008	156.401	0.80	0.70	0.05	0.56	0.03	0.06	
41	14/05/2008	156.402	1.00	0.60	0.05	0.60	0.03	0.07	
42	14/05/2008	156.403	1.00	1.00	0.05	1.00	0.05	0.12	
43	14/05/2008	156.404	1.00	0.80	0.05	0.80	0.04	0.09	
44									
45									
46									
47									
48									
49									
50									
51									
52									
53									
54									
55									
56									
57									
58									
59									
60									
BALANCE END OF MAY :						350.07	17.50	40.60	

LINTASAN RESOURCES SDN BHD.
 MAINTENANCE OF FEDERAL ROADS - WEST COAST, SABAH

SUMMARY - POTHOLE PATCHING RECORD

Month : May 2008

ITEM	DISTRICT	ROUTE NO.	ROAD NAME	AREA (m ²)			VOLUME (m ³)			PREMIX QUANTITY (TON)		
				PREVIOUS MONTH	CURRENT MONTH	CUM. MONTH	PREVIOUS MONTH	CURRENT MONTH	CUM. MONTH	PREVIOUS MONTH	CURRENT MONTH	CUM. MONTH
1	Ranau	22	Jalan Kota Kinabalu - Sandakan	1,618.92	473.09	2,092.01	114.66	29.96	144.62	266.38	69.53	335.91
TOTAL:				1,618.92	473.09	2,092.01	114.66	29.96	144.62	266.38	69.53	335.91

LINTASAN RESOURCES SDN. BHD.
MAINTENANCE OF FEDERAL ROADS - WEST COAST, SABAH

R01 POT HOLE PATCHING RECORD

DISTRICT: Ranau

ROUTE NO. 22

ROAD NAME: Jalan Kota Kinabalu - Sandakan

MONTH: May 2008

ITEM	DATE	CHAINAGE	Length (m)	Width (m)	Depth (m)	AREA (m ²)	VOLUME (m ³)	PREMIX QUANTITY (ton)	REMARKS
BROUGHT FORWARD FROM APRIL 2008:						1,618.92	114.66	266.38	
1	02/05/2008	54.700	1.50	1.10	0.06	1.65	0.10	0.23	RHS
2	02/05/2008	54.700	0.60	0.60	0.05	0.36	0.02	0.05	RHS
3	02/05/2008	54.710	0.50	0.50	0.05	0.25	0.01	0.02	LHS
4	02/05/2008	54.710	1.60	0.80	0.05	1.28	0.06	0.14	LHS
5	02/05/2008	54.720	2.30	0.70	0.05	1.61	0.08	0.19	LHS
6	02/05/2008	54.720	0.50	0.50	0.05	0.25	0.01	0.02	LHS
7	02/05/2008	54.730	1.60	1.10	0.05	1.76	0.09	0.21	LHS
8	02/05/2008	54.730	1.10	0.90	0.05	0.99	0.05	0.12	LHS
9	02/05/2008	54.740	1.50	1.50	0.05	2.25	0.11	0.26	LHS
10	02/05/2008	53.200	0.60	0.50	0.05	0.30	0.02	0.05	LHS
11	02/05/2008	53.100	0.50	0.40	0.06	0.20	0.01	0.02	LHS
12	02/05/2008	52.100	0.40	0.30	0.05	0.12	0.01	0.02	RHS
13	02/05/2008	52.110	0.40	0.20	0.05	0.08	0.00	0.00	RHS
14	02/05/2008	52.120	0.40	0.30	0.05	0.12	0.01	0.02	RHS
15	02/05/2008	49.800	1.00	0.90	0.06	0.90	0.05	0.12	LHS
16	02/05/2008	49.810	0.40	0.30	0.05	0.12	0.01	0.02	LHS
17	02/05/2008	49.820	0.90	0.60	0.05	0.54	0.03	0.07	LHS
18	02/05/2008	49.830	1.10	0.50	0.05	0.55	0.03	0.07	LHS
19	02/05/2008	49.700	1.20	0.80	0.05	0.96	0.05	0.12	RHS
20	02/05/2008	49.710	2.80	1.20	0.06	3.36	0.20	0.46	RHS
21	02/05/2008	50.400	2.00	1.60	0.10	3.20	0.32	0.74	LHS
22	02/05/2008	51.000	2.80	2.60	0.08	7.28	0.58	1.35	LHS
23	03/05/2008	48.900	0.90	0.80	0.05	0.72	0.04	0.09	LHS
24	03/05/2008	48.900	3.90	1.00	0.05	3.90	0.20	0.46	LHS
25	03/05/2008	48.910	3.70	1.10	0.05	4.07	0.20	0.46	LHS
26	03/05/2008	48.910	0.50	0.40	0.05	0.20	0.01	0.02	LHS
27	03/05/2008	48.920	2.60	1.70	0.05	4.42	0.22	0.51	RHS
28	03/05/2008	48.800	3.90	0.90	0.05	3.51	0.18	0.42	LHS
29	03/05/2008	48.800	0.70	0.30	0.05	0.21	0.01	0.02	LHS
30	03/05/2008	48.810	0.80	0.60	0.05	0.48	0.02	0.05	LHS
CARRIED FORWARD:						1,664.56	117.39	272.71	

LINTASAN RESOURCES SDN. BHD.
MAINTENANCE OF FEDERAL ROADS - WEST COAST, SABAH

R01 POTHOLE PATCHING RECORD

DISTRICT: Ranau

ROUTE NO. 22

ROAD NAME: Jalan Kota Kinabalu - Sandakan

MONTH: May 2008

ITEM	DATE	CHAINAGE	Length (m)	Width (m)	Depth (m)	AREA (m ²)	VOLUME (m ³)	PREMIX QUANTITY (ton)	REMARKS
BROUGHT FORWARD:						1,664.56	117.39	272.71	
31	03/05/2008	48.810	0.50	0.40	0.05	0.20	0.01	0.02	LHS
32	03/05/2008	48.820	0.90	0.30	0.05	0.27	0.01	0.02	LHS
33	03/05/2008	48.820	0.60	0.40	0.05	0.24	0.01	0.02	LHS
34	03/05/2008	48.830	3.00	0.80	0.05	2.40	0.12	0.28	LHS
35	03/05/2008	48.830	0.70	0.70	0.05	0.49	0.02	0.05	LHS
36	03/05/2008	48.840	0.60	0.50	0.05	0.30	0.02	0.05	LHS
37	03/05/2008	48.840	1.40	0.70	0.05	0.98	0.05	0.12	LHS
38	03/05/2008	48.850	0.30	0.30	0.05	0.09	0.00	0.00	LHS
39	03/05/2008	48.850	11.30	1.30	0.05	14.69	0.73	1.69	LHS
40	03/05/2008	48.860	1.60	1.00	0.05	1.60	0.08	0.19	LHS
41	03/05/2008	48.860	1.70	0.50	0.05	0.85	0.04	0.09	LHS
42	03/05/2008	48.870	0.80	0.50	0.05	0.40	0.02	0.05	LHS
43	03/05/2008	48.870	1.00	0.70	0.05	0.70	0.04	0.09	LHS
44	03/05/2008	48.880	0.80	0.50	0.05	0.40	0.02	0.05	LHS
45	03/05/2008	48.800	2.10	0.90	0.05	1.89	0.09	0.21	RHS
46	03/05/2008	48.800	1.70	0.70	0.05	1.19	0.06	0.14	RHS
47	03/05/2008	48.810	0.60	0.50	0.05	0.30	0.02	0.05	RHS
48	03/05/2008	48.810	0.30	0.30	0.05	0.09	0.00	0.00	RHS
49	03/05/2008	48.820	0.40	0.40	0.05	0.16	0.01	0.02	RHS
50	03/05/2008	48.820	0.40	0.30	0.05	0.12	0.01	0.02	RHS
51	03/05/2008	48.830	0.40	0.40	0.05	0.16	0.01	0.02	RHS
52	03/05/2008	48.830	0.50	0.30	0.05	0.15	0.01	0.02	RHS
53	03/05/2008	48.840	0.60	0.60	0.05	0.36	0.02	0.05	RHS
54	03/05/2008	48.840	0.80	0.40	0.05	0.32	0.02	0.05	RHS
55	03/05/2008	48.850	0.50	0.40	0.05	0.20	0.01	0.02	RHS
56	03/05/2008	48.850	0.60	0.40	0.05	0.24	0.01	0.02	RHS
57	03/05/2008	48.860	0.70	0.40	0.05	0.28	0.01	0.02	RHS
58	03/05/2008	48.860	1.40	0.80	0.05	1.12	0.06	0.14	RHS
59	03/05/2008	48.870	0.80	0.30	0.05	0.24	0.01	0.02	RHS
60	03/05/2008	48.870	1.00	0.80	0.05	0.80	0.04	0.09	RHS
CARRIED FORWARD:						1,695.79	118.95	276.32	

LINTASAN RESOURCES SDN. BHD.
MAINTENANCE OF FEDERAL ROADS - WEST COAST, SABAH

R01 POTHOLE PATCHING RECORD

DISTRICT: Ranau

ROUTE NO. 22

ROAD NAME: Jalan Kota Kinabalu - Sandakan

MONTH: May 2008

ITEM	DATE	CHAINAGE	Length (m)	Width (m)	Depth (m)	AREA (m ²)	VOLUME (m ³)	PREMIX QUANTITY (ton)	REMARKS
BROUGHT FORWARD:						1,695.79	118.95	276.32	
61	03/05/2008	48.880	2.50	0.40	0.05	1.00	0.05	0.12	RHS
62	03/05/2008	48.880	3.20	0.90	0.05	2.88	0.14	0.32	RHS
63	03/05/2008	48.890	1.50	0.60	0.05	0.90	0.05	0.12	RHS
64	03/05/2008	48.890	2.40	1.70	0.05	4.08	0.20	0.46	RHS
65	03/05/2008	48.920	4.00	0.80	0.05	3.20	0.16	0.37	RHS
66	03/05/2008	48.930	6.70	0.40	0.05	2.68	0.13	0.30	RHS
67	03/05/2008	48.930	0.40	0.30	0.05	0.12	0.01	0.02	RHS
68	03/05/2008	48.940	0.50	0.40	0.05	0.20	0.01	0.02	RHS
69	03/05/2008	48.940	0.40	0.40	0.05	0.16	0.01	0.02	RHS
70	03/05/2008	48.950	0.40	0.40	0.05	0.16	0.01	0.02	RHS
71	03/05/2008	48.950	2.10	1.10	0.05	2.31	0.12	0.28	RHS
72	03/05/2008	48.960	1.30	1.30	0.05	1.69	0.08	0.19	RHS
73	03/05/2008	48.960	14.00	0.90	0.05	12.60	0.63	1.46	RHS
74	03/05/2008	48.970	10.20	0.80	0.05	8.16	0.41	0.95	RHS
75	03/05/2008	47.200	0.40	0.40	0.06	0.16	0.01	0.02	LHS
76	03/05/2008	47.210	1.10	1.10	0.06	1.21	0.07	0.16	LHS
77	05/05/2008	50.200	1.70	1.50	0.07	2.55	0.18	0.42	LHS
78	05/05/2008	53.300	2.10	1.30	0.05	2.73	0.14	0.32	LHS
79	05/05/2008	55.200	2.10	1.30	0.07	2.73	0.19	0.44	LHS
80	07/05/2008	62.000	3.10	1.90	0.06	5.89	0.35	0.81	RHS
81	07/05/2008	62.010	1.30	1.00	0.05	1.30	0.07	0.16	LHS
82	07/05/2008	62.020	1.20	1.00	0.06	1.20	0.07	0.16	LHS
83	07/05/2008	62.030	1.10	0.80	0.06	0.88	0.05	0.12	LHS
84	07/05/2008	62.040	2.90	0.90	0.06	2.61	0.16	0.37	LHS
85	07/05/2008	76.800	1.70	1.30	0.05	2.21	0.11	0.26	LHS
86	07/05/2008	76.810	2.00	1.60	0.05	3.20	0.16	0.37	RHS
87	07/05/2008	76.820	0.30	0.30	0.05	0.09	0.00	0.00	RHS
88	07/05/2008	76.830	0.40	0.30	0.05	0.12	0.01	0.02	RHS
89	07/05/2008	76.840	3.70	1.20	0.05	4.44	0.22	0.51	LHS
90	07/05/2008	105.300	3.50	1.40	0.10	4.90	0.49	1.14	RHS
CARRIED FORWARD:						1,772.15	123.24	286.25	

LINTASAN RESOURCES SDN. BHD.
MAINTENANCE OF FEDERAL ROADS - WEST COAST, SABAH

R01 POTHOLE PATCHING RECORD

DISTRICT: Ranau

ROUTE NO. 22

ROAD NAME: Jalan Kota Kinabalu - Sandakan

MONTH: May 2008

ITEM	DATE	CHAINAGE	Length (m)	Width (m)	Depth (m)	AREA (m ²)	VOLUME (m ³)	PREMIX QUANTITY (ton)	REMARKS
BROUGHT FORWARD:						1,772.15	123.24	286.25	
91	07/05/2008	105.310	3.20	2.50	0.06	8.00	0.48	1.11	LHS
92	07/05/2008	105.320	7.20	1.30	0.06	9.36	0.56	1.30	LHS
93	07/05/2008	105.330	13.90	0.70	0.06	9.73	0.58	1.35	LHS
94	09/05/2008	76.400	0.60	0.40	0.05	0.24	0.01	0.02	RHS
95	09/05/2008	76.300	0.50	0.50	0.05	0.25	0.01	0.02	LHS
96	09/05/2008	76.310	0.30	0.30	0.05	0.09	0.00	0.00	RHS
97	09/05/2008	76.320	0.60	0.50	0.05	0.30	0.02	0.05	LHS
98	09/05/2008	76.330	0.30	0.30	0.05	0.09	0.00	0.00	LHS
99	09/05/2008	76.340	2.40	0.90	0.05	2.16	0.11	0.26	LHS
100	09/05/2008	76.350	1.20	0.80	0.05	0.96	0.05	0.12	LHS
101	09/05/2008	76.360	0.80	0.80	0.05	0.64	0.03	0.07	LHS
102	09/05/2008	76.200	2.10	0.50	0.05	1.05	0.05	0.12	RHS
103	09/05/2008	76.210	1.20	0.30	0.05	0.36	0.02	0.05	RHS
104	09/05/2008	76.000	1.10	0.80	0.05	0.88	0.04	0.09	LHS
105	09/05/2008	76.010	1.00	0.90	0.05	0.90	0.05	0.12	LHS
106	09/05/2008	76.020	0.40	0.30	0.05	0.12	0.01	0.02	LHS
107	09/05/2008	75.900	1.30	1.20	0.05	1.56	0.08	0.19	LHS
108	09/05/2008	75.910	0.90	0.80	0.05	0.72	0.04	0.09	LHS
109	09/05/2008	75.700	0.40	0.30	0.05	0.12	0.01	0.02	LHS
110	09/05/2008	75.710	1.20	1.20	0.05	1.44	0.07	0.16	LHS
111	09/05/2008	75.720	0.30	0.20	0.05	0.06	0.00	0.00	LHS
112	09/05/2008	74.900	1.10	0.70	0.05	0.77	0.04	0.09	RHS
113	09/05/2008	74.910	0.70	0.60	0.05	0.42	0.02	0.05	RHS
114	10/05/2008	140.700	4.00	3.60	0.10	14.40	1.44	3.34	RHS
115	10/05/2008	140.710	2.30	0.80	0.05	1.84	0.09	0.21	LHS
116	10/05/2008	140.720	1.80	1.50	0.10	2.70	0.27	0.63	LHS
117	10/05/2008	140.730	1.30	0.80	0.05	1.04	0.05	0.12	LHS
118	12/05/2008	135.200	6.20	2.40	0.10	14.88	1.49	3.46	LHS
119	12/05/2008	135.000	2.40	1.40	0.06	3.36	0.20	0.46	LHS
120	12/05/2008	137.700	8.50	2.70	0.10	22.95	2.30	5.34	RHS
CARRIED FORWARD:						1,873.54	131.36	305.11	

LINTASAN RESOURCES SDN. BHD.
MAINTENANCE OF FEDERAL ROADS - WEST COAST, SABAH

R01 POTHOLE PATCHING RECORD

DISTRICT: Ranau

ROUTE NO. 22

ROAD NAME: Jalan Kota Kinabalu - Sandakan

MONTH: May 2008

ITEM	DATE	CHAINAGE	Length (m)	Width (m)	Depth (m)	AREA (m ²)	VOLUME (m ³)	PREMIX QUANTITY (ton)	REMARKS
BROUGHT FORWARD:						1,873.54	131.36	305.11	
121	14/05/2008	119.000	4.30	1.30	0.06	5.59	0.34	0.79	LHS
122	14/05/2008	119.010	3.10	1.70	0.06	5.27	0.32	0.74	RHS
123	14/05/2008	120.200	2.30	1.10	0.15	2.53	0.38	0.88	LHS
124	14/05/2008	120.000	1.50	1.50	0.06	2.25	0.14	0.32	RHS
125	14/05/2008	120.010	2.20	1.20	0.06	2.64	0.16	0.37	RHS
126	14/05/2008	120.020	0.50	0.50	0.05	0.25	0.01	0.02	RHS
127	14/05/2008	120.030	1.00	1.00	0.08	1.00	0.08	0.19	LHS
128	16/05/2008	113.000	1.50	0.80	0.08	1.20	0.10	0.23	RHS
129	16/05/2008	113.010	1.50	1.30	0.07	1.95	0.14	0.32	RHS
130	16/05/2008	117.000	2.40	0.90	0.08	2.16	0.17	0.39	LHS
131	16/05/2008	118.500	0.60	0.50	0.05	0.30	0.02	0.05	LHS
132	16/05/2008	118.510	1.20	0.90	0.05	1.08	0.05	0.12	LHS
133	16/05/2008	118.520	0.80	0.50	0.05	0.40	0.02	0.05	LHS
134	16/05/2008	118.530	0.70	0.60	0.05	0.42	0.02	0.05	LHS
135	17/05/2008	55.210	0.60	0.40	0.06	0.24	0.01	0.02	LHS
136	17/05/2008	55.220	0.50	0.40	0.05	0.20	0.01	0.02	RHS
137	17/05/2008	55.230	0.40	0.40	0.05	0.16	0.01	0.02	LHS
138	17/05/2008	55.240	0.50	0.30	0.05	0.15	0.01	0.02	LHS
139	19/05/2008	50.000	0.60	0.50	0.05	0.30	0.02	0.05	LHS
140	19/05/2008	50.000	1.50	0.70	0.05	1.05	0.05	0.12	LHS
141	19/05/2008	50.010	0.50	0.50	0.05	0.25	0.01	0.02	LHS
142	19/05/2008	50.010	0.50	0.40	0.05	0.20	0.01	0.02	LHS
143	19/05/2008	50.020	1.70	0.80	0.05	1.36	0.07	0.16	LHS
144	19/05/2008	50.020	0.70	0.50	0.05	0.35	0.02	0.05	LHS
145	19/05/2008	50.030	0.90	0.50	0.05	0.45	0.02	0.05	LHS
146	19/05/2008	50.030	0.50	0.50	0.05	0.25	0.01	0.02	LHS
147	19/05/2008	50.040	0.80	0.60	0.05	0.48	0.02	0.05	RHS
148	19/05/2008	50.040	1.80	1.00	0.05	1.80	0.09	0.21	RHS
149	19/05/2008	50.050	1.10	0.50	0.05	0.55	0.03	0.07	RHS
150	19/05/2008	50.050	1.50	0.70	0.05	1.05	0.05	0.12	RHS
CARRIED FORWARD:						1,909.42	133.75	310.65	

LINTASAN RESOURCES SDN. BHD.

MAINTENANCE OF FEDERAL ROADS - WEST COAST, SABAH

R01 POTHOLE PATCHING RECORDDISTRICT: RanauROUTE NO. 22ROAD NAME: Jalan Kota Kinabalu - SandakanMONTH: May 2008

ITEM	DATE	CHAINAGE	Length (m)	Width (m)	Depth (m)	AREA (m ²)	VOLUME (m ³)	PREMIX QUANTITY (ton)	REMARKS
BROUGHT FORWARD:						1,909.42	133.75	310.65	
151	19/05/2008	53.060	4.00	1.20	0.05	4.80	0.24	0.56	LHS
152	19/05/2008	53.060	3.00	1.40	0.05	4.20	0.21	0.49	LHS
153	19/05/2008	53.070	4.30	1.00	0.05	4.30	0.22	0.51	RHS
154	19/05/2008	53.070	0.80	0.80	0.05	0.64	0.03	0.07	RHS
155	19/05/2008	53.080	1.60	1.10	0.05	1.76	0.09	0.21	RHS
156	19/05/2008	53.080	3.10	1.10	0.05	3.41	0.17	0.39	RHS
157	19/05/2008	50.100	1.90	1.30	0.08	2.47	0.20	0.46	LHS
158	19/05/2008	50.110	1.10	0.40	0.05	0.44	0.02	0.05	RHS
159	19/05/2008	50.120	1.90	0.70	0.05	1.33	0.07	0.16	RHS
160	19/05/2008	50.130	0.80	0.60	0.05	0.48	0.02	0.05	RHS
161	19/05/2008	50.140	0.50	0.40	0.05	0.20	0.01	0.02	RHS
162	21/05/2008	120.000	3.70	2.20	0.08	8.14	0.65	1.51	LHS
163	21/05/2008	120.010	2.50	1.70	0.06	4.25	0.26	0.60	LHS
164	21/05/2008	120.600	1.20	1.10	0.06	1.32	0.08	0.19	RHS
165	21/05/2008	120.610	1.20	0.80	0.08	0.96	0.08	0.19	RHS
166	21/05/2008	121.900	6.50	0.40	0.05	2.60	0.13	0.30	RHS
167	21/05/2008	121.910	0.70	0.50	0.05	0.35	0.02	0.05	RHS
168	21/05/2008	121.920	0.30	0.20	0.05	0.06	0.00	0.00	RHS
169	21/05/2008	121.930	1.20	0.50	0.05	0.60	0.03	0.07	RHS
170	21/05/2008	121.940	0.60	0.40	0.05	0.24	0.01	0.02	RHS
171	21/05/2008	121.950	0.70	0.50	0.05	0.35	0.02	0.05	RHS
172	23/05/2008	111.900	0.70	0.50	0.08	0.35	0.03	0.07	LHS
173	23/05/2008	111.910	0.50	0.30	0.05	0.15	0.01	0.02	LHS
174	23/05/2008	111.920	0.40	0.30	0.05	0.12	0.01	0.02	RHS
175	23/05/2008	111.930	2.90	0.70	0.05	2.03	0.10	0.23	RHS
176	23/05/2008	111.940	0.70	0.70	0.05	0.49	0.02	0.05	RHS
177	23/05/2008	112.300	2.00	1.00	0.10	2.00	0.20	0.46	LHS
178	23/05/2008	113.800	1.70	1.30	0.06	2.21	0.13	0.30	LHS
179	23/05/2008	113.810	2.30	0.90	0.06	2.07	0.12	0.28	LHS
180	23/05/2008	122.700	0.50	0.50	0.05	0.25	0.01	0.02	RHS
CARRIED FORWARD:						1,961.99	136.94	318.05	

LINTASAN RESOURCES SDN. BHD.
MAINTENANCE OF FEDERAL ROADS - WEST COAST, SABAH

R01 POTHOLE PATCHING RECORD

DISTRICT: Ranau

ROUTE NO. 22

ROAD NAME: Jalan Kota Kinabalu - Sandakan

MONTH: May 2008

ITEM	DATE	CHAINAGE	Length (m)	Width (m)	Depth (m)	AREA (m ²)	VOLUME (m ³)	PREMIX QUANTITY (ton)	REMARKS
BROUGHT FORWARD:						1,961.99	136.94	318.05	
181	23/05/2008	122.710	0.50	0.40	0.05	0.20	0.01	0.02	LHS
182	23/05/2008	122.720	1.20	1.00	0.05	1.20	0.06	0.14	LHS
183	23/05/2008	122.730	0.60	0.40	0.05	0.24	0.01	0.02	RHS
184	23/05/2008	122.800	1.70	0.80	0.05	1.36	0.07	0.16	LHS
185	23/05/2008	122.810	0.90	0.60	0.05	0.54	0.03	0.07	LHS
186	23/05/2008	122.820	3.50	0.70	0.05	2.45	0.12	0.28	LHS
187	23/05/2008	122.830	2.40	0.50	0.05	1.20	0.06	0.14	LHS
188	23/05/2008	122.840	1.60	1.20	0.05	1.92	0.10	0.23	LHS
189	23/05/2008	122.850	1.30	0.90	0.05	1.17	0.06	0.14	LHS
190	23/05/2008	123.700	0.60	0.40	0.05	0.24	0.01	0.02	RHS
191	23/05/2008	105.000	2.80	1.20	0.10	3.36	0.34	0.79	RHS
192	23/05/2008	104.300	0.60	0.50	0.05	0.30	0.02	0.05	LHS
193	23/05/2008	104.310	0.80	0.80	0.05	0.64	0.03	0.07	LHS
194	23/05/2008	104.320	1.30	1.20	0.06	1.56	0.09	0.21	LHS
195	23/05/2008	104.330	0.80	0.60	0.06	0.48	0.03	0.07	LHS
196	23/05/2008	104.340	0.60	0.40	0.08	0.24	0.02	0.05	LHS
197	24/05/2008	73.100	1.70	0.40	0.05	0.68	0.03	0.07	RHS
198	24/05/2008	73.110	1.10	0.70	0.05	0.77	0.04	0.09	RHS
199	24/05/2008	73.120	0.80	0.60	0.05	0.48	0.02	0.05	RHS
200	24/05/2008	73.130	1.10	0.60	0.06	0.66	0.04	0.09	RHS
201	24/05/2008	73.140	0.80	0.50	0.06	0.40	0.02	0.05	RHS
202	24/05/2008	73.150	1.90	0.50	0.06	0.95	0.06	0.14	LHS
203	24/05/2008	73.600	1.00	1.00	0.08	1.00	0.08	0.19	RHS
204	24/05/2008	74.000	0.40	0.30	0.05	0.12	0.01	0.02	LHS
205	24/05/2008	74.010	1.20	0.80	0.06	0.96	0.06	0.14	LHS
206	24/05/2008	74.020	0.80	0.70	0.06	0.56	0.03	0.07	LHS
207	24/05/2008	74.030	0.30	0.30	0.06	0.09	0.01	0.02	LHS
208	24/05/2008	74.040	0.50	0.40	0.06	0.20	0.01	0.02	LHS
209	24/05/2008	74.050	0.40	0.20	0.05	0.08	0.00	0.00	RHS
210	24/05/2008	74.300	1.20	1.20	0.06	1.44	0.09	0.21	LHS
CARRIED FORWARD:						1,987.48	138.50	321.67	

LINTASAN RESOURCES SDN. BHD.
MAINTENANCE OF FEDERAL ROADS - WEST COAST, SABAH

R01 POTHOLE PATCHING RECORD

DISTRICT: Ranau

ROUTE NO. 22

ROAD NAME: Jalan Kota Kinabalu - Sandakan

MONTH: May 2008

ITEM	DATE	CHAINAGE	Length (m)	Width (m)	Depth (m)	AREA (m ²)	VOLUME (m ³)	PREMIX QUANTITY (ton)	REMARKS
BROUGHT FORWARD:						1,987.48	138.50	321.67	
211	24/05/2008	74.310	1.40	1.00	0.06	1.40	0.08	0.19	LHS
212	24/05/2008	74.320	2.00	0.90	0.05	1.80	0.09	0.21	RHS
213	26/05/2008	75.700	0.80	0.60	0.05	0.48	0.02	0.05	LHS
214	26/05/2008	75.710	0.60	0.60	0.05	0.36	0.02	0.05	LHS
215	26/05/2008	75.800	0.40	0.20	0.05	0.08	0.00	0.00	LHS
216	26/05/2008	77.600	0.30	0.20	0.05	0.06	0.00	0.00	LHS
217	26/05/2008	77.610	1.30	1.00	0.05	1.30	0.07	0.16	LHS
218	26/05/2008	77.620	0.40	0.30	0.05	0.12	0.01	0.02	LHS
219	26/05/2008	77.700	1.40	0.80	0.05	1.12	0.06	0.14	LHS
220	26/05/2008	79.900	1.40	0.80	0.05	1.12	0.06	0.14	RHS
221	26/05/2008	79.910	1.30	0.90	0.05	1.17	0.06	0.14	RHS
222	26/05/2008	79.920	0.70	0.50	0.05	0.35	0.02	0.05	LHS
223	26/05/2008	80.700	1.50	1.00	0.06	1.50	0.09	0.21	RHS
224	26/05/2008	80.710	2.30	1.00	0.05	2.30	0.12	0.28	RHS
225	26/05/2008	80.720	1.10	0.90	0.06	0.99	0.06	0.14	RHS
226	26/05/2008	80.730	1.20	0.90	0.05	1.08	0.05	0.12	RHS
227	26/05/2008	80.740	1.50	1.30	0.06	1.95	0.12	0.28	LHS
228	26/05/2008	80.750	1.30	1.00	0.06	1.30	0.08	0.19	LHS
229	27/05/2008	74.300	2.60	0.90	0.05	2.34	0.12	0.28	RHS
230	27/05/2008	74.310	1.40	1.20	0.05	1.68	0.08	0.19	LHS
231	27/05/2008	81.200	3.60	1.40	0.05	5.04	0.25	0.58	LHS
232	27/05/2008	84.600	0.60	0.50	0.05	0.30	0.02	0.05	RHS
233	27/05/2008	84.610	2.20	0.50	0.05	1.10	0.06	0.14	RHS
234	27/05/2008	85.100	1.10	0.20	0.05	0.22	0.01	0.02	LHS
235	27/05/2008	85.100	0.90	0.20	0.05	0.18	0.01	0.02	LHS
236	27/05/2008	85.110	0.80	0.20	0.05	0.16	0.01	0.02	LHS
237	27/05/2008	85.110	0.80	0.50	0.05	0.40	0.02	0.05	LHS
238	27/05/2008	85.120	0.60	0.30	0.05	0.18	0.01	0.02	LHS
239	27/05/2008	85.120	1.30	0.70	0.05	0.91	0.05	0.12	LHS
240	27/05/2008	85.130	1.90	0.80	0.05	1.52	0.08	0.19	LHS
CARRIED FORWARD:						2,019.99	140.23	325.72	

LINTASAN RESOURCES SDN. BHD.
MAINTENANCE OF FEDERAL ROADS - WEST COAST, SABAH

R01 POTHOLE PATCHING RECORD

DISTRICT: Ranau

ROUTE NO. 22

ROAD NAME: Jalan Kota Kinabalu - Sandakan

MONTH: May 2008

ITEM	DATE	CHAINAGE	Length (m)	Width (m)	Depth (m)	AREA (m ²)	VOLUME (m ³)	PREMIX QUANTITY (ton)	REMARKS
BROUGHT FORWARD:						2,019.99	140.23	325.72	
241	27/05/2008	85.130	0.50	0.50	0.05	0.25	0.01	0.02	LHS
242	27/05/2008	85.140	0.90	0.70	0.05	0.63	0.03	0.07	LHS
243	27/05/2008	85.140	0.80	0.60	0.05	0.48	0.02	0.05	LHS
244	27/05/2008	85.150	4.30	1.00	0.05	4.30	0.22	0.51	LHS
245	27/05/2008	84.500	1.10	1.00	0.06	1.10	0.07	0.16	LHS
246	27/05/2008	84.510	0.40	0.20	0.05	0.08	0.00	0.00	LHS
247	27/05/2008	84.520	0.20	0.20	0.05	0.04	0.00	0.00	LHS
248	27/05/2008	86.000	1.20	0.50	0.05	0.60	0.03	0.07	RHS
249	27/05/2008	86.600	3.00	1.50	0.06	4.50	0.27	0.63	LHS
250	27/05/2008	86.610	0.80	0.50	0.06	0.40	0.02	0.05	LHS
251	29/05/2008	140.800	2.70	1.70	0.08	4.59	0.37	0.86	LHS
252	29/05/2008	140.800	11.10	2.30	0.05	25.53	1.28	2.97	LHS
253	30/05/2008	140.700	2.50	1.20	0.06	3.00	0.18	0.42	LHS
254	30/05/2008	139.100	4.20	0.60	0.05	2.52	0.13	0.30	RHS
255	30/05/2008	139.110	0.40	0.40	0.05	0.16	0.01	0.02	RHS
256	30/05/2008	139.120	0.50	0.20	0.05	0.10	0.01	0.02	RHS
257	30/05/2008	139.130	0.50	0.40	0.05	0.20	0.01	0.02	RHS
258	30/05/2008	139.000	1.00	0.80	0.05	0.80	0.04	0.09	RHS
259	30/05/2008	139.010	1.50	1.00	0.06	1.50	0.09	0.21	RHS
260	30/05/2008	139.020	0.50	0.40	0.05	0.20	0.01	0.02	LHS
261	30/05/2008	139.030	0.80	0.60	0.05	0.48	0.02	0.05	LHS
262	30/05/2008	139.040	0.60	0.50	0.05	0.30	0.02	0.05	LHS
263	30/05/2008	139.050	3.20	1.60	0.08	5.12	0.41	0.95	LHS
264	30/05/2008	139.060	0.40	0.40	0.10	0.16	0.02	0.05	LHS
265	30/05/2008	138.400	1.90	1.50	0.06	2.85	0.17	0.39	LHS
266	30/05/2008	138.410	0.50	0.50	0.06	0.25	0.02	0.05	LHS
267	30/05/2008	138.420	1.60	0.90	0.06	1.44	0.09	0.21	LHS
268	30/05/2008	138.430	5.80	1.80	0.08	10.44	0.84	1.95	LHS
269									
270									
CARRIED FORWARD:						2,092.01	144.62	335.91	

LINTASAN RESOURCES SDN. BHD.

MAINTENANCE OF FEDERAL ROADS - LABUAN, FT

R01 POTHOLE PATCHING RECORD

DISTRICT: W.P LABUAN

ROUTE NO. REFER TO REMARKS

ROAD NAME: REFER TO REMARKS

MONTH: MAY 2008

ITEM	DATE	CHAINAGE (KM)	Length (m)	Width (m)	Depth (m)	AREA (m ²)	VOLUME (m ³)	PREMIX QUANTITY (ton)	REMARKS
BROUGHT FORWARD:			-	-	-	217.32	16.31	37.49	
1	05/05/2008	1.69	0.68	0.63	0.08	0.43	0.03	0.07	L 700 - Jalan Tun Mustapha
2	"	1.18	0.80	0.55	0.08	0.44	0.03	0.08	L 700 - Jalan Patau-patau
3	"	1.19	0.70	0.65	0.08	0.46	0.03	0.08	L 700 - Jalan Patau-patau
4	"	4.31	0.60	0.58	0.08	0.35	0.03	0.06	L 706 - Jalan Ranche-ranche
5	"	4.32	0.80	0.70	0.08	0.56	0.04	0.10	L 706 - Jalan Ranche-ranche
6	06/05/2008	3.46	0.60	0.55	0.08	0.33	0.02	0.06	L 703 - Jalan Okk Daud
7	"	3.47	0.65	0.50	0.08	0.33	0.02	0.06	L 703 - Jalan Okk Daud
8	07/05/2008	3.92	0.68	0.60	0.08	0.41	0.03	0.07	L 705 - Jalan Bebuloh
9	"	3.93	0.45	0.40	0.08	0.18	0.01	0.03	L 705 - Jalan Bebuloh
10	"	0.40	1.00	0.60	0.08	0.60	0.05	0.10	L 750 - Jalan Bukit Besar
11	08/05/2008	4.35	0.47	0.40	0.08	0.19	0.01	0.03	L 700 - Jalan Tun Mustapha
12	"	4.36	0.54	0.50	0.08	0.27	0.02	0.05	L 700 - Jalan Tun Mustapha
13	"	4.37	0.50	0.46	0.08	0.23	0.02	0.04	L 700 - Jalan Tun Mustapha
14	"	4.38	0.49	0.46	0.08	0.23	0.02	0.04	L 700 - Jalan Tun Mustapha
15	"	4.39	0.50	0.48	0.08	0.24	0.02	0.04	L 700 - Jalan Tun Mustapha
16	"	4.40	0.90	0.80	0.08	0.72	0.05	0.12	L 700 - Jalan Tun Mustapha
17	"	0.36	0.70	0.50	0.08	0.35	0.03	0.06	L 708 - Jalan Okk Abdullah
18	"	0.37	0.70	0.50	0.08	0.35	0.03	0.06	L 708 - Jalan Okk Abdullah
19	"	0.38	0.70	0.50	0.08	0.35	0.03	0.06	L 708 - Jalan Okk Abdullah
20	"	0.39	0.70	0.50	0.08	0.35	0.03	0.06	L 708 - Jalan Okk Abdullah
21	"	0.40	0.70	0.60	0.08	0.42	0.03	0.07	L 708 - Jalan Okk Abdullah
22	"	1.00	0.98	0.95	0.08	0.93	0.07	0.16	L 743 - Jalan Kompleks Sukan
23	09/05/2008	0.31	1.20	0.50	0.08	0.60	0.05	0.10	L 734 - Jalan Pancur Hitam
24	"	0.43	0.60	0.60	0.08	0.36	0.03	0.06	L 734 - Jalan Pancur Hitam
25	"	0.44	1.20	0.60	0.08	0.72	0.05	0.12	L 734 - Jalan Pancur Hitam
26	"	2.06	1.20	0.90	0.08	1.08	0.08	0.19	L 734 - Jalan Pancur Hitam
27	"	4.70	1.00	0.80	0.08	0.80	0.06	0.14	L 704 - Jalan Mohammad Salleh
28	"	5.20	0.80	0.70	0.08	0.56	0.04	0.10	L 704 - Jalan Mohammad Salleh
29	"	5.21	0.50	0.30	0.08	0.15	0.01	0.03	L 704 - Jalan Mohammad Salleh
30	"	5.22	0.40	0.30	0.08	0.12	0.01	0.02	L 704 - Jalan Mohammad Salleh
31	12/05/2008	0.56	0.70	0.70	0.08	0.49	0.04	0.08	L 709 - Jalan Tg. Batu/Tg/ Purun
32	"	0.75	1.00	0.70	0.08	0.70	0.05	0.12	L 709 - Jalan Tg. Batu/Tg/ Purun
33	"	0.83	0.80	0.60	0.08	0.48	0.04	0.08	L 709 - Jalan Tg. Batu/Tg/ Purun
34	"	0.84	0.80	0.80	0.08	0.64	0.05	0.11	L 709 - Jalan Tg. Batu/Tg/ Purun
TOTAL C/F :						232.72	17.46	40.15	

LINTASAN RESOURCES SDN. BHD.

MAINTENANCE OF FEDERAL ROADS - LABUAN, FT

R01 POTHOLE PATCHING RECORD

DISTRICT: W.P LABUAN

ROUTE NO.: REFER TO REMARKS

ROAD NAME: REFER TO REMARKS

MONTH: MAY 2008

ITEM	DATE	CHAINAGE (KM)	Length (m)	Width (m)	Depth (m)	AREA (m ²)	VOLUME (m ³)	PREMIX QUANTITY (ton)	REMARKS
BROUGHT FORWARD:			-	-	-	232.72	17.46	40.15	
35	14/05/2008	2.04	1.10	0.60	0.08	0.66	0.05	0.11	L 721 - Jalan Bukit Timbalai
36	"	2.11	0.80	0.80	0.08	0.64	0.05	0.11	L 721 - Jalan Bukit Timbalai
37	"	7.36	0.80	0.60	0.08	0.48	0.04	0.08	L 705 - Jalan Bebuloh
38	"	7.39	1.20	0.60	0.08	0.72	0.05	0.12	L 705 - Jalan Bebuloh
39	"	7.40	1.00	0.60	0.08	0.60	0.05	0.10	L 705 - Jalan Bebuloh
40	"	7.41	0.60	0.50	0.08	0.30	0.02	0.05	L 705 - Jalan Bebuloh
41	16/05/2008	0.78	1.00	0.90	0.08	0.90	0.07	0.16	L 727 - Jalan Tanjung Taras
42	"	0.79	0.80	0.60	0.08	0.48	0.04	0.08	L 727 - Jalan Tanjung Taras
43	"	0.19	0.90	0.70	0.08	0.63	0.05	0.11	L 730 - Jalan Sawangan Cina
44	"	0.21	0.60	0.60	0.08	0.36	0.03	0.06	L 730 - Jalan Sawangan Cina
45	"	0.22	0.60	0.60	0.08	0.36	0.03	0.06	L 730 - Jalan Sawangan Cina
46	"	0.54	0.70	0.70	0.08	0.49	0.04	0.08	L 730 - Jalan Sawangan Cina
47	"	0.78	0.80	0.70	0.08	0.56	0.04	0.10	L 730 - Jalan Sawangan Cina
48	"	0.90	0.60	0.60	0.08	0.36	0.03	0.06	L 730 - Jalan Sawangan Cina
49	17/05/2008	0.39	1.00	0.90	0.08	0.90	0.07	0.16	L 719 - Jalan Penghulu Tuah
50	"	0.40	1.00	0.75	0.08	0.75	0.06	0.13	L 719 - Jalan Penghulu Tuah
51	"	0.41	1.00	0.90	0.08	0.90	0.07	0.16	L 719 - Jalan Penghulu Tuah
52	"	0.42	1.00	0.90	0.08	0.90	0.07	0.16	L 719 - Jalan Penghulu Tuah
53	"	0.43	1.00	0.90	0.08	0.90	0.07	0.16	L 719 - Jalan Penghulu Tuah
54	"	0.44	1.00	0.95	0.08	0.95	0.07	0.16	L 719 - Jalan Penghulu Tuah
55	"	0.45	1.00	0.95	0.08	0.95	0.07	0.16	L 719 - Jalan Penghulu Tuah
56	"	0.51	1.50	0.95	0.08	1.43	0.11	0.25	L 719 - Jalan Penghulu Tuah
57	"	0.52	1.00	0.90	0.08	0.90	0.07	0.16	L 719 - Jalan Penghulu Tuah
58	19/05/2008	0.37	1.63	1.00	0.08	1.63	0.12	0.28	L 700 - Jalan Tun Mustapha
59	"	0.38	1.63	0.70	0.08	1.14	0.09	0.20	L 700 - Jalan Tun Mustapha
60	"	0.40	1.20	1.05	0.08	1.26	0.09	0.22	L 700 - Jalan Tun Mustapha
61	"	0.44	1.63	1.00	0.08	1.63	0.12	0.28	L 700 - Jalan Tun Mustapha
62	"	2.36	0.50	0.45	0.08	0.23	0.02	0.04	L 700 - Jalan Patau-patau
63	"	2.37	1.50	1.00	0.08	1.50	0.11	0.26	L 700 - Jalan Patau-patau
64	"	2.38	1.50	1.00	0.08	1.50	0.11	0.26	L 700 - Jalan Patau-patau
65	"	2.39	1.50	1.00	0.08	1.50	0.11	0.26	L 700 - Jalan Patau-patau
66	"	2.40	1.50	0.90	0.08	1.35	0.10	0.23	L 700 - Jalan Patau-patau
67	22/05/2008	2.82	1.10	1.00	0.08	1.10	0.08	0.19	L 706 - Jalan Ranche-ranche
68	"	2.83	1.10	1.00	0.08	1.10	0.08	0.19	L 706 - Jalan Ranche-ranche
TOTAL C/F :						262.77	19.72	45.33	

LINTASAN RESOURCES SDN. BHD.

MAINTENANCE OF FEDERAL ROADS - LABUAN, FT

R01 POTHOLE PATCHING RECORD

DISTRICT: W.P LABUAN

ROUTE NO. REFER TO REMARKS

ROAD NAME: REFER TO REMARKS

MONTH: MAY 2008

ITEM	DATE	CHAINAGE (KM)	Length (m)	Width (m)	Depth (m)	AREA (m2)	VOLUME (m3)	PREMIX QUANTITY (ton)	REMARKS
BROUGHT FORWARD:			-	-	-	262.77	19.72	45.33	
69	22/05/2008	2.84	1.10	1.00	0.08	1.10	0.08	0.19	L 706 - Jalan Ranche-rancha
70	"	2.85	1.10	0.90	0.08	0.99	0.07	0.17	L 706 - Jalan Ranche-rancha
71	"	2.86	1.22	0.55	0.08	0.67	0.05	0.12	L 706 - Jalan Ranche-rancha
TOTAL :						265.53	19.93	45.81	

DISTRICT : KOTA KINABALU
ROUTE NO : 501 JLN KK-PENAMPANG-LOKAWI
LOCATION : CH0.469 (LHS-QEH Traffic Lights)

R01 PAVER BLOCK



BEFORE



IN PROGRESS



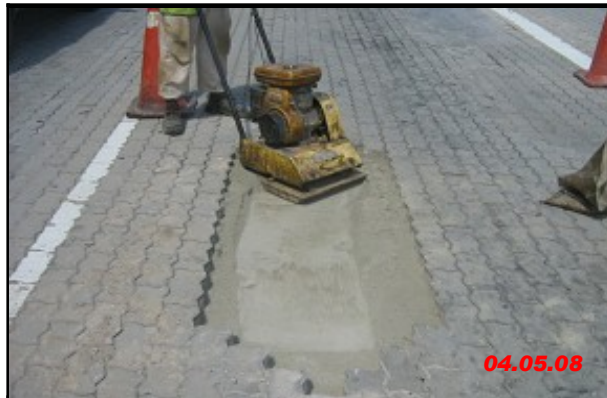
AFTER

DISTRICT : KOTA KINABALU
ROUTE NO : 501 JLN KK-PENAMPANG-LOKAWI
LOCATION : CH0.499 (LHS-QEH Traffic Lights)

R01 PAVER BLOCK



BEFORE



IN PROGRESS



AFTER

LINTASAN RESOURCES SDN. BHD.

PRIVATISATION OF WEST COAST SABAH FEDERAL ROADS MAINTENANCE

SUMMARY - PAVING BLOCK RECORD

Month: May 2008

ITEM	DISTRICT	ROUTE NO.	ROAD NAME	AREA (m ²)		
				PREVIOUS MONTH	CURRENT MONTH	CUM. MONTH
1	Kota Kinabalu	501	Jalan Kota Kinabalu - Penampang - Lok Kawi	80.12	50.70	130.82
TOTAL				80.12	50.70	130.82

LINTASAN RESOURCES SDN. BHD.
 MAINTENANCE OF FEDERAL ROADS - WEST COAST, SABAH
R01 PAVING BLOCK RECORD

DISTRICT: KOTA KINABALU
ROUTE NO. 501
ROAD NAME: JLN KK - PENAMPANG - LOK KAWI
MONTH: MAY 2008

ITEM	DATE	CHAINAGE	LENGTH (m)	WIDTH (m)	AREA (m2)	REMARKS
BROUGHT FORWARD:					80.12	
1	5/4/2008	0.469	1.60	0.60	0.96	RHS-QEH Traffic Lights
2	5/4/2008	0.459	0.80	0.60	0.48	RHS-QEH Traffic Lights
3	5/4/2008	0.499	2.40	0.80	1.92	RHS-QEH Traffic Lights
4	5/10/2008	0.629	3.60	1.20	4.32	RHS-QEH Traffic Lights
5	5/11/2008	0.630	3.60	2.60	9.36	RHS-QEH Traffic Lights
6	5/11/2008	0.63	3.60	2.80	10.08	RHS-QEH Traffic Lights
7	5/17/2008	0.569	2.80	1.40	3.92	LHS-QEH Traffic Lights
8	5/17/2008	0.571	3.10	1.00	3.10	LHS-QEH Traffic Lights
9	5/17/2008	0.573	1.80	1.00	1.80	LHS-QEH Traffic Lights
10	5/18/2008	0.575	2.80	1.20	3.36	LHS-QEH Traffic Lights
11	5/18/2008	0.577	1.60	0.80	1.28	LHS-QEH Traffic Lights
12	5/18/2008	0.579	1.20	0.80	0.96	LHS-QEH Traffic Lights
13	5/19/2008	0.567	1.20	0.80	0.96	LHS-QEH Traffic Lights
14	5/19/2008	0.569	2.60	1.00	2.60	LHS-QEH Traffic Lights
15	5/19/2008	0.572	4.00	1.40	5.60	LHS-QEH Traffic Lights
TOTAL:					130.82	

DISTRICT : PENAMPANG
ROUTE NO : 501 JALAN KK-PENAMPANG-LOKAWI
LOCATION : CH5.739 (RHS)

R01 PAVEMENT TREATMENT



BEFORE



IN PROGRESS



AFTER

DISTRICT : PENAMPANG
ROUTE NO : 501 JALAN KK-PENAMPANG-LOKAWI
LOCATION : CH5.469 (RHS)

R01 PAVEMENT TREATMENT



BEFORE



IN PROGRESS



AFTER

LINTASAN RESOURCES SDN. BHD.
PAVEMENT TREATMENT
GRAND SUMMARY

MONTH: MAY 2008

DISTRICT	ROUTE NO.	ROAD NAME	Previous Month	Current Month	Cummulative
			(m ²)	(m ²)	(m ²)
Kota Belud	01	Jalan Kota Kinabalu-Kudat	40.39	0.00	40.39
Kota Marudu	01	Jalan Kota Kinabalu-Kudat	0.00	0.00	0.00
Kudat	01	Jalan Kota Kinabalu-Kudat	0.00	0.00	0.00
Tuaran	01	Jalan Kota Kinabalu-Kudat	0.00	0.00	0.00
	22	Jalan Kota Kinabalu-Sandakan	0.00	0.00	0.00
	503	Jalan Berungis-Kota Belud	0.00	0.00	0.00
Kota Kinabalu	01	Jalan Kota Kinabalu-Kudat	0.00	0.00	0.00
	01	Jalan Kota Kinabalu-Sindumin	0.00	0.00	0.00
	606	Jalan Susur Sepangar Bay	0.00	0.00	0.00
	607	Jalan Masuk Ke Pelabuhan Baru	0.00	0.00	0.00
	608	Jalan K Masuk Ke Lapangan Terbang Lama	0.00	0.00	0.00
Penampang	01	Jalan Kota Kinabalu-Sindumin	42.84	896.12	938.96
	500	Jalan Kota Kinabalu-Keningau-Tenom	64.28	0.00	64.28
	501	Jalan Kota Kinabalu-Penampang-Lok Kawi	75.20	439.18	514.38
Papar	01	Jalan Kota Kinabalu-Sindumin	0.00	0.00	0.00
Ranau	22	Jalan Kota Kinabalu-Sandakan	0.00	0.00	0.00
Tambunam	500	Jalan Kota Kinabalu-Keningau-Tenom	502.53	52.78	555.31
Keningau	500	Jalan Kota Kinabalu-Keningau-Tenom	0.00	0.00	0.00
Tenom	500	Jalan Kota Kinabalu-Keningau-Tenom	0.00	0.00	0.00
Beaufort	01	Jalan Kota Kinabalu-Sindumin	146.71	48.31	195.02
	502	Jalan Beaufort-Menumbok	77.88	0.00	77.88
Sipitang	01	Jalan Kota Kinabalu-Sindumin	60.67	0.00	60.67
Kuala Penyu	502	Jalan Beaufort-Menumbok	121.66	0.00	121.66
TOTAL			1,132.16	1,436.39	2,568.55

LINTASAN RESOURCES SDN. BHD.

MAINTENANCE OF FEDERAL ROADS - WEST COAST, SABAH

SUMMARY - PAVEMENT TREATMENT RECORD

Month : MAY 2008

ITEM	DISTRICT	ROUTE NO.	ROAD NAME	AREA (m ²)		
				PREVIOUS MONTH	CURRENT MONTH	CUM. MONTH
1	Beaufort	01	Jalan Kota Kinabalu - Sindumin	146.71	48.31	195.02
2	Sipitang	01	Jalan Kota Kinabalu - Sindumin	60.67	-	60.67
3	Beaufort	502	Jalan Beaufort - Menumbok	77.88	-	77.88
4	Kuala Penyu	502	Jalan Beaufort - Menumbok	121.66	-	121.66
TOTAL				406.92	48.31	455.23

LINTASAN RESOURCES SDN. BHD.
 MAINTENANCE OF FEDERAL ROADS - WEST COAST, SABAH

R01 PAVEMENT TREATMENT RECORD

DISTRICT: BEAUFORT

ROUTE NO. 01

ROAD NAME: JLN KK-SINDUMIN

MONTH: MAY 2008

ITEM	DATE	LOCATION (CH)	LENGTH (m)	WIDTH (m)	AREA (m ²)	REMARKS
BROUGHT FORWARD:					146.71	
1	14/05/2008	95.390	4.20	0.90	3.78	LHS
2	14/05/2008	96.960	3.80	1.60	6.08	RHS
3	14/05/2008	96.963	2.80	1.00	2.80	LHS
4	14/05/2008	97.075	7.20	2.20	15.84	LHS
5	14/05/2008	104.360	2.10	1.50	3.15	LHS
6	26/05/2008	94.900	9.80	1.70	16.66	RHS
7						
8						
9						
10						
11						
12						
13						
14						
15						
16						
17						
18						
19						
20						
21						
22						
23						
24						
25						
26						
27						
28						
29						
30						
TOTAL:					195.02	

LINTASAN RESOURCES SDN. BHD.
 MAINTENANCE OF FEDERAL ROADS - WEST COAST, SABAH

R01 PAVEMENT TREATMENT RECORD

DISTRICT: BEAUFORT

ROUTE NO. 502

ROAD NAME: JLN BEAUFORT - MENUMBOK

MONTH: MAY 2008

ITEM	DATE	LOCATION (CH)	LENGTH (m)	WIDTH (m)	AREA (m ²)	REMARKS
BROUGHT FORWARD:					77.88	
1						
2						
3						
4						
5						
6						
7						
8						
9						
10						
11						
12						
13						
14						
15						
16						
17						
18						
19						
20						
21						
22						
23						
24						
25						
26						
27						
28						
29						
30						
TOTAL:					77.88	

LINTASAN RESOURCES SDN. BHD.
M A I N T E N A N C E O F F E D E R A L R O A D S - W E S T C O A S T , S A B A H

SUMMARY - PAVEMENT TREATMENT RECORD

Month : MAY 2008

ITEM	DISTRICT	ROUTE NO.	ROAD NAME	AREA (m ²)		
				PREVIOUS MONTH	CURRENT MONTH	CUM MONTH
1	TAMBUNAN	500	Jalan Kota Kinabalu - Keningau - Tenom	502.53	52.78	555.31
2	KENINGAU	500	Jalan Kota Kinabalu - Keningau - Tenom	-	-	-
3	TENOM	500	Jalan Kota Kinabalu - Keningau - Tenom	-	-	-
TOTAL				502.53	52.78	555.31

LINTASAN RESOURCES SDN. BHD.
MAINTENANCE OF FEDERAL ROADS - WEST COAST, SABAH

R01 PAVEMENT TREATMENT RECORD

DISTRICT: TAMBUNAN
ROUTE NO. 500
ROAD NAME: JLN KOTA KINABALU -KENINGAU-TENOM
MONTH: May 2008

ITEM	DATE	LOCATION (CH)	LENGTH (m)	WIDTH (m)	AREA (m ²)	REMARKS
BROUGHT FORWARD:					502.53	
1	5/2/2008	95.240	7.80	1.00	7.80	Crocodile crack/RHS
2	5/2/2008	95.227	5.50	0.60	3.30	Crocodile crack/RHS
3	5/2/2008	95.230	6.70	0.80	5.36	Crocodile crack/LHS
4	5/2/2008	95.221	2.70	0.70	1.89	Crocodile crack/RHS
5	5/2/2008	95.241	3.70	0.90	3.33	Crocodile crack/RHS
6	5/2/2008	95.386	3.50	0.80	2.80	Crocodile crack/RHS
7	5/2/2008	95.410	3.50	1.00	3.50	Crocodile crack/LHS
8	5/2/2008	95.412	9.00	0.80	7.20	Crocodile crack/LHS
9	5/2/2008	95.421	3.00	1.00	3.00	Crocodile crack/LHS
10	5/2/2008	95.324	4.30	0.70	3.01	Crocodile crack/LHS
11	5/2/2008	95.329	8.40	0.40	3.36	Crocodile crack/LHS
12	5/2/2008	95.439	1.70	0.50	0.85	Crocodile crack/LHS
13	5/2/2008	95.406	7.20	0.50	3.60	Crocodile crack/LHS
14	5/2/2008	95.414	5.40	0.70	3.78	Crocodile crack/RHS
15						
16						
17						
18						
19						
20						
21						
22						
23						
24						
25						
26						
27						
28						
29						
30						
TOTAL :					555.31	

LINTASAN RESOURCES SDN. BHD.
 MAINTENANCE OF FEDERAL ROADS - WEST COAST, SABAH

R01 PAVEMENT TREATMENT RECORD

DISTRICT: KENINGAU
ROUTE NO. 500
ROAD NAME: JLN KOTA KINABALU -KENINGAU-TENOM
MONTH: May 2008

ITEM	DATE	LOCATION (CH)	LENGTH (m)	WIDTH (m)	AREA (m ²)	REMARKS
BROUGHT FORWARD:					0.00	
1						
2						
3						
4						
5						
6						
7						
8						
9						
10						
11						
12						
13						
14						
15						
16						
17						
18						
19						
20						
21						
22						
23						
24						
25						
26						
27						
28						
29						
30						
TOTAL :					0.00	

LINTASAN RESOURCES SDN. BHD.
 MAINTENANCE OF FEDERAL ROADS - WEST COAST, SABAH

R01 PAVEMENT TREATMENT RECORD

DISTRICT: TENOM

ROUTE NO. 500

ROAD NAME: JLN KOTA KINABALU -KENINGAU-TENOM

MONTH: May 2008

ITEM	DATE	LOCATION (CH)	LENGTH (m)	WIDTH (m)	AREA (m ²)	REMARKS
BROUGHT FORWARD:					0.00	
1						
2						
3						
4						
5						
6						
7						
8						
9						
10						
11						
12						
13						
14						
15						
16						
17						
18						
19						
20						
21						
22						
23						
24						
25						
26						
27						
28						
29						
30						
TOTAL :					0.00	

LINTASAN RESOURCES SDN. BHD.
M A I N T E N A N C E O F F E D E R A L R O A D S - W E S T C O A S T , S A B A H

SUMMARY - PAVEMENT TREATMENT RECORD

Month: May 2008

ITEM	DISTRICT	ROUTE NO.	ROAD NAME	AREA (m ²)		
				PREVIOUS MONTH	CURRENT MONTH	CUM MONTH
1	Kota Kinabalu	01	Jalan Kota Kinabalu - Sindumin	-	-	-
2	Penampang	01	Jalan Kota Kinabalu - Sindumin	42.84	896.12	938.96
3	Papar	01	Jalan Kota Kinabalu - Sindumin	-	-	-
4	Penampang	500	Jalan Kota Kinabalu - Keningau - Tenom	64.28	-	64.28
5	Penampang	501	Jalan Kota Kinabalu - Penampang - Lok Kawi	75.20	439.18	514.38
6	Kota Kinabalu	608	Jalan masuk ke Lapangan Terbang Lama, K.K.	-	-	-
TOTAL				182.32	1,335.30	1,517.62

LINTASAN RESOURCES SDN. BHD.
MAINTENANCE OF FEDERAL ROADS - WEST COAST, SABAH

R01 PAVEMENT TREATMENT RECORD

DISTRICT: PENAMPANG

ROUTE NO. 01

ROAD NAME: JLN KK-SINDUMIN

MONTH: MAY 2008

ITEM	DATE	LOCATION (CH)	LENGTH (m)	WIDTH (m)	AREA (m ²)	REMARKS
BROUGHT FORWARD:					42.84	
1	06/05/2008	12.495	4.30	1.00	4.30	RHS
2	06/05/2008	12.455	1.00	0.80	0.80	RHS
3	06/05/2008	12.450	2.30	1.10	2.53	RHS
4	06/05/2008	12.435	8.20	2.10	17.22	RHS
5	06/05/2008	12.432	1.30	1.20	1.56	RHS
6	06/05/2008	12.430	2.10	1.40	2.94	RHS
7	06/05/2008	12.425	1.90	1.40	2.66	RHS
8	06/05/2008	12.415	5.00	1.00	5.00	RHS
9	06/05/2008	12.412	1.80	1.00	1.80	RHS
10	06/05/2008	12.410	1.80	0.90	1.62	RHS
11	06/05/2008	12.405	2.30	1.30	2.99	RHS
12	06/05/2008	11.965	0.90	0.80	0.72	RHS
13	06/05/2008	11.963	4.40	1.10	4.84	RHS
14	06/05/2008	11.955	1.20	0.80	0.96	RHS
15	06/05/2008	11.920	2.30	1.10	2.53	RHS
16	06/05/2008	11.908	1.20	1.00	1.20	RHS
17	06/05/2008	11.895	1.60	1.00	1.60	RHS
18	5/7/2008	11.885	2.40	1.10	2.64	RHS
19	5/7/2008	11.875	1.30	1.20	1.56	RHS
20	5/7/2008	11.871	1.30	1.10	1.43	RHS
21	5/7/2008	11.845	6.00	1.30	7.80	RHS
22	5/7/2008	11.843	4.20	1.20	5.04	RHS
23	5/7/2008	11.800	4.60	1.30	5.98	RHS
24	5/7/2008	11.8	2.30	1.10	2.53	RHS
25	5/7/2008	11.610	3.10	1.10	3.41	RHS
26	5/7/2008	11.600	1.20	0.60	0.72	RHS
27	5/7/2008	11.6	4.30	0.90	3.87	RHS
28	5/7/2008	11.595	2.00	0.90	1.80	RHS
29	5/7/2008	11.590	5.80	0.80	4.64	RHS
30	5/7/2008	11.515	1.80	0.80	1.44	RHS
CARRIED FORWARD:					140.97	

LINTASAN RESOURCES SDN. BHD.

MAINTENANCE OF FEDERAL ROADS - WEST COAST, SABAH

R01 PAVEMENT TREATMENT RECORD

DISTRICT: PENAMPANG

ROUTE NO. 01

ROAD NAME: JLN KK-SINDUMIN

MONTH: MAY 2008

ITEM	DATE	LOCATION (CH)	LENGTH (m)	WIDTH (m)	AREA (m ²)	REMARKS
BROUGHT FORWARD:					140.97	
31	5/7/2008	11.505	3.70	1.10	4.07	RHS
32	5/7/2008	11.495	2.60	0.70	1.82	RHS
33	5/7/2008	11.488	2.40	0.90	2.16	RHS
34	5/8/2008	7.715	4.90	1.30	6.37	LHS
35	5/8/2008	7.722	2.90	1.00	2.90	LHS
36	5/8/2008	7.725	5.80	0.70	4.06	LHS
37	5/8/2008	7.735	2.00	1.00	2.00	LHS
38	5/8/2008	7.740	5.50	1.30	7.15	LHS
39	5/8/2008	7.750	1.60	1.00	1.60	LHS
40	5/8/2008	7.755	5.30	1.30	6.89	LHS
41	5/8/2008	7.765	6.20	0.80	4.96	LHS
42	5/8/2008	7.770	4.50	0.90	4.05	LHS
43	5/8/2008	11.450	3.60	1.20	4.32	RHS
44	5/8/2008	11.435	2.70	1.00	2.70	RHS
45	5/8/2008	11.430	4.40	1.00	4.40	RHS
46	5/9/2008	9.180	6.30	0.90	5.67	LHS
47	5/9/2008	9.250	3.20	1.10	3.52	LHS
48	5/9/2008	9.285	1.30	0.90	1.17	LHS
49	5/9/2008	9.300	1.80	1.10	1.98	LHS
50	5/9/2008	9.303	3.00	1.10	3.30	LHS
51	5/9/2008	9.305	3.20	1.10	3.52	LHS
52	5/9/2008	9.315	3.00	0.90	2.70	LHS
53	5/9/2008	11.51	6.20	1.20	7.44	RHS
54	5/9/2008	11.50	3.10	1.10	3.41	RHS
55	5/9/2008	11.493	0.90	0.70	0.63	RHS
56	5/9/2008	11.490	5.10	1.00	5.10	RHS
57	5/9/2008	11.39	1.50	1.20	1.80	RHS
58	5/9/2008	11.382	4.60	2.80	12.88	RHS
59	5/9/2008	11.375	5.90	1.40	8.26	RHS
60	5/9/2008	11.365	4.90	1.40	6.86	RHS
CARRIED FORWARD:					268.66	

LINTASAN RESOURCES SDN. BHD.
MAINTENANCE OF FEDERAL ROADS - WEST COAST, SABAH

R01 PAVEMENT TREATMENT RECORD

DISTRICT: PENAMPANG

ROUTE NO. 01

ROAD NAME: JLN KK-SINDUMIN

MONTH: MAY 2008

ITEM	DATE	LOCATION (CH)	LENGTH (m)	WIDTH (m)	AREA (m ²)	REMARKS
BROUGHT FORWARD:					268.66	
61	5/9/2008	11.360	1.80	1.30	2.34	RHS
62	5/11/2008	11.300	2.60	1.00	2.60	RHS
63	5/11/2008	11.295	1.80	0.90	1.62	RHS
64	5/11/2008	11.265	4.20	1.30	5.46	RHS
65	5/11/2008	11.267	2.10	1.50	3.15	RHS
66	5/11/2008	11.239	6.30	1.10	6.93	RHS
67	5/11/2008	11.232	1.80	1.10	1.98	RHS
68	5/11/2008	11.195	3.20	1.30	4.16	RHS
69	5/11/2008	11.130	4.30	1.10	4.73	RHS
70	5/11/2008	11.085	5.80	1.10	6.38	RHS
71	5/11/2008	11.075	6.10	1.10	6.71	RHS
72	5/11/2008	10.845	2.70	1.40	3.78	RHS
73	5/11/2008	10.840	3.10	0.90	2.79	RHS
74	5/11/2008	10.828	2.80	1.30	3.64	RHS
75	5/11/2008	10.805	3.20	1.10	3.52	RHS
76	5/11/2008	10.797	5.00	1.00	5.00	RHS
77	5/11/2008	10.793	1.40	1.00	1.40	RHS
78	5/12/2008	9.318	5.40	0.80	4.32	LHS
79	5/12/2008	9.325	2.00	0.90	1.80	LHS
80	5/12/2008	9.330	2.60	0.60	1.56	LHS
81	5/12/2008	9.335	34.70	0.80	27.76	LHS
82	5/12/2008	10.730	6.00	0.80	4.80	RHS
83	5/12/2008	10.713	1.60	1.20	1.92	RHS
84	5/12/2008	10.71	2.80	1.70	4.76	RHS
85	5/12/2008	10.708	3.00	2.30	6.90	RHS
86	5/12/2008	10.703	3.80	1.30	4.94	RHS
87	5/12/2008	10.7	2.80	1.00	2.80	RHS
88	5/12/2008	10.700	3.50	1.00	3.50	RHS
89	5/13/2008	9.360	7.00	1.00	7.00	LHS
90	5/13/2008	9.368	3.80	1.50	5.70	LHS
CARRIED FORWARD:					412.61	

LINTASAN RESOURCES SDN. BHD.

MAINTENANCE OF FEDERAL ROADS - WEST COAST, SABAH

R01 PAVEMENT TREATMENT RECORD

DISTRICT: PENAMPANG

ROUTE NO. 01

ROAD NAME: JLN KK-SINDUMIN

MONTH: MAY 2008

ITEM	DATE	LOCATION (CH)	LENGTH (m)	WIDTH (m)	AREA (m ²)	REMARKS
BROUGHT FORWARD:					412.61	
91	5/13/2008	9.372	7.00	1.20	8.40	LHS
92	5/13/2008	9.380	6.00	1.20	7.20	LHS
93	5/13/2008	9.388	4.00	1.20	4.80	LHS
94	5/13/2008	10.690	4.80	1.00	4.80	RHS
95	5/13/2008	10.67	7.10	1.30	9.23	RHS
96	5/13/2008	10.660	2.60	1.40	3.64	RHS
97	5/14/2008	9.390	3.60	1.00	3.60	LHS
98	5/14/2008	9.4	4.40	1.10	4.84	LHS
99	5/14/2008	9.398	18.50	1.20	22.20	LHS
100	5/14/2008	9.413	9.90	1.00	9.90	LHS
101	5/14/2008	10.663	10.30	1.30	13.39	RHS
102	5/14/2008	10.658	1.80	1.40	2.52	RHS
103	5/14/2008	10.635	7.50	1.30	9.75	RHS
104	5/14/2008	10.638	4.20	1.30	5.46	RHS
105	5/14/2008	10.635	3.40	1.70	5.78	RHS
106	5/15/2008	9.420	18.10	1.10	19.91	LHS
107	5/15/2008	9.438	2.20	0.90	1.98	LHS
108	5/15/2008	9.453	4.20	0.90	3.78	LHS
109	5/15/2008	9.458	13.50	1.00	13.50	LHS
110	5/15/2008	10.655	10.30	1.30	13.39	RHS
111	5/15/2008	10.638	4.20	1.30	5.46	RHS
112	5/15/2008	10.640	4.20	1.30	5.46	RHS
113	5/15/2008	10.63	3.40	3.10	10.54	RHS
114	5/16/2008	9.47	9.10	1.00	9.10	LHS
115	5/16/2008	9.483	9.90	1.10	10.89	LHS
116	5/16/2008	9.52	6.60	1.10	7.26	LHS
117	5/16/2008	10.63	3.80	3.10	11.78	RHS
118	5/16/2008	10.620	5.10	0.80	4.08	RHS
119	5/16/2008	10.615	2.10	0.70	1.47	RHS
120	5/16/2008	10.595	4.70	1.30	6.11	RHS
CARRIED FORWARD:					652.83	

LINTASAN RESOURCES SDN. BHD.

MAINTENANCE OF FEDERAL ROADS - WEST COAST, SABAH

R01 PAVEMENT TREATMENT RECORD

DISTRICT: PENAMPANG

ROUTE NO. 01

ROAD NAME: JLN KK-SINDUMIN

MONTH: MAY 2008

ITEM	DATE	LOCATION (CH)	LENGTH (m)	WIDTH (m)	AREA (m ²)	REMARKS
BROUGHT FORWARD:					652.83	
121	5/16/2008	10.590	13.20	1.60	21.12	RHS
122	5/17/2008	9.532	4.40	0.80	3.52	LHS
123	5/17/2008	9.545	14.90	1.10	16.39	LHS
124	5/17/2008	10.605	2.40	1.10	2.64	RHS
125	5/17/2008	10.593	3.30	1.10	3.63	RHS
126	5/17/2008	10.570	14.80	1.20	17.76	RHS
127	5/17/2008	10.573	4.70	1.80	8.46	RHS
128	5/17/2008	10.565	6.80	1.20	8.16	RHS
129	5/18/2008	9.565	13.60	1.20	16.32	LHS
130	5/18/2008	9.568	11.30	1.10	12.43	LHS
131	5/18/2008	9.585	4.30	1.10	4.73	LHS
132	5/18/2008	9.590	1.70	0.90	1.53	LHS
133	5/18/2008	9.595	9.50	0.80	7.60	LHS
134	5/18/2008	9.675	2.10	0.80	1.68	RHS
135	5/18/2008	9.670	9.60	1.10	10.56	RHS
136	5/18/2008	9.667	10.80	1.20	12.96	RHS
137	5/19/2008	9.460	4.20	1.30	5.46	LHS
138	5/19/2008	9.465	22.30	1.20	26.76	LHS
139	5/19/2008	9.468	12.80	1.00	12.80	LHS
140	5/19/2008	9.482	8.40	1.00	8.40	LHS
141	5/19/2008	9.490	5.00	1.20	6.00	LHS
142	5/19/2008	9.495	3.60	1.10	3.96	LHS
143	5/19/2008	9.500	7.80	1.10	8.58	LHS
144	5/20/2008	9.5	8.80	1.20	10.56	LHS
145	5/20/2008	9.505	2.20	0.90	1.98	LHS
146	5/20/2008	9.510	3.40	0.90	3.06	LHS
147	5/20/2008	9.51	7.10	1.10	7.81	LHS
148	5/20/2008	9.515	5.50	1.00	5.50	LHS
149	5/20/2008	9.522	3.40	1.00	3.40	LHS
150	5/20/2008	9.663	4.20	1.30	5.46	RHS
CARRIED FORWARD:					912.05	

LINTASAN RESOURCES SDN. BHD.

MAINTENANCE OF FEDERAL ROADS - WEST COAST, SABAH

R01 PAVEMENT TREATMENT RECORD

DISTRICT: PENAMPANG

ROUTE NO. 501

ROAD NAME: JLN KK-PENAMPANG-LOK KAWI

MONTH: MAY 2008

ITEM	DATE	LOCATION (CH)	LENGTH (m)	WIDTH (m)	AREA (m ²)	REMARKS
BROUGHT FORWARD:					75.20	
1	5/2/2008	8.343	14.20	1.60	22.72	RHS
2	5/2/2008	8.351	8.20	1.60	13.12	RHS
3	5/12/2008	5.759	7.10	1.00	7.10	RHS
4	5/12/2008	5.757	1.20	0.80	0.96	RHS
5	5/12/2008	5.749	10.60	1.00	10.60	RHS
6	5/12/2008	5.739	10.20	1.00	10.20	RHS
7	5/12/2008	5.755	11.20	1.00	11.20	RHS
8	5/12/2008	5.469	5.20	1.00	5.20	RHS
9	5/12/2008	5.463	10.10	1.00	10.10	RHS
10	5/12/2008	5.469	11.80	1.00	11.80	RHS
11	5/13/2008	5.470	10.60	0.80	8.48	LHS
12	5/13/2008	5.471	12.20	1.00	12.20	LHS
13	5/14/2008	5.499	10.60	1.00	10.60	LHS
14	5/14/2008	5.538	6.80	0.60	4.08	LHS
15	5/14/2008	5.539	6.20	0.80	4.96	LHS
16	5/14/2008	5.543	24.80	0.80	19.84	LHS
17	5/14/2008	5.545	6.10	1.40	8.54	LHS
18	5/14/2008	5.549	22.20	1.40	31.08	LHS
19	5/14/2008	5.557	6.60	0.60	3.96	LHS
20	5/15/2008	5.459	6.20	0.80	4.96	LHS
21	5/15/2008	5.467	8.60	0.80	6.88	LHS
22	5/15/2008	5.469	10.40	0.80	8.32	LHS
23	5/15/2008	5.51	11.60	1.40	16.24	LHS
24	5/15/2008	5.51	17.20	0.80	13.76	LHS
25	5/15/2008	5.529	6.00	1.10	6.60	LHS
26	5/15/2008	5.54	11.00	0.60	6.60	LHS
27	5/15/2008	5.54	8.20	1.10	9.02	LHS
28	5/16/2008	5.544	8.40	0.60	5.04	LHS
29	5/16/2008	5.545	4.10	1.20	4.92	LHS
30	5/16/2008	5.546	4.00	1.00	4.00	LHS
CARRIED FORWARD:					368.28	

LINTASAN RESOURCES SDN. BHD.
 MAINTENANCE OF FEDERAL ROADS - WEST COAST, SABAH

R01 PAVEMENT TREATMENT RECORD

DISTRICT: PENAMPANG

ROUTE NO. 01

ROAD NAME: JLN KK-SINDUMIN

MONTH: MAY 2008

ITEM	DATE	LOCATION (CH)	LENGTH (m)	WIDTH (m)	AREA (m ²)	REMARKS
BROUGHT FORWARD:					368.28	
31	5/16/2008	5.649	4.20	1.00	4.20	LHS
32	5/16/2008	5.659	22.60	1.00	22.60	LHS
33	5/16/2008	5.673	3.20	1.20	3.84	LHS
34	5/16/2008	5.749	4.20	1.20	5.04	LHS
35	5/16/2008	5.784	18.20	1.20	21.84	LHS
36	5/16/2008	5.813	7.00	1.10	7.70	LHS
37	5/16/2008	5.827	12.80	1.20	15.36	RHS
38	5/16/2008	5.839	5.00	0.80	4.00	RHS
39	5/20/2008	5.825	20.40	0.80	16.32	LHS
40	5/20/2008	5.827	3.20	0.80	2.56	LHS
41	5/20/2008	5.837	7.20	0.80	5.76	LHS
42	5/20/2008	5.839	6.40	0.80	5.12	LHS
43	5/20/2008	5.841	12.10	0.80	9.68	LHS
44	5/20/2008	5.842	15.10	0.80	12.08	LHS
45	5/20/2008	5.845	5.00	1.00	5.00	LHS
46	5/20/2008	5.849	5.00	1.00	5.00	LHS
TOTAL:					514.38	

LINTASAN RESOURCES SDN. BHD.

MAINTENANCE OF FEDERAL ROADS - WEST COAST, SABAH

R01 PAVEMENT TREATMENT RECORD

DISTRICT: PENAMPANG
ROUTE NO. 500
ROAD NAME: JALAN KK-KENINGAU-TENOM
MONTH: MAY 2008

ITEM	DATE	LOCATION (CH)	LENGTH (m)	WIDTH (m)	AREA (m²)	REMARKS
BROUGHT FORWARD:					64.28	
TOTAL:					64.28	

LINTASAN RESOURCES SDN. BHD.

MAINTENANCE OF FEDERAL ROADS - WEST COAST, SABAH

SUMMARY - PAVEMENT TREATMENT RECORD

Month : MAY 2008

ITEM	DISTRICT	ROUTE NO.	ROAD NAME	AREA (m ²)		
				PREVIOUS MONTH	CURRENT MONTH	CUM. MONTH
1	KOTA BELUD	01	JALAN KOTA KINABALU - KUDAT	40.39	-	40.39
2	KOTA MARUDU	01	JALAN KOTA KINABALU - KUDAT	-	-	-
3	KUDAT	01	JALAN KOTA KINABALU - KUDAT	-	-	-
TOTAL				40.39	-	40.39

LINTASAN RESOURCES SDN. BHD.
MAINTENANCE OF FEDERAL ROADS - WEST COAST, SABAH

R01 PAVEMENT TREATMENT RECORD

DISTRICT: KOTA BELUD
ROUTE NO. 01
ROAD NAME: JALAN KOTA KINABALU- KUDAT
MONTH: MAY 2008

ITEM	DATE	LOCATION (CH)	LENGTH (m)	WIDTH (m)	AREA (m ²)	REMARKS
BROUGHT FORWARD:					40.39	
1						
2						
3						
4						
5						
6						
7						
8						
9						
10						
11						
12						
13						
14						
15						
16						
17						
18						
19						
20						
21						
22						
23						
24						
25						
26						
27						
28						
29						
30						
BALANCE END OF MAY :					40.39	

DISTRICT : KUALA PENYU
ROUTE NO : 502 -JALAN BEAUFORT -MENUMBOK
LOCATION : CH59.480 (KM 59.480)-LHS

RO1 VEGETATION CLEARING



BEFORE



IN PROGRESS



AFTER

DISTRICT : KOTA MARUDU
ROUTENO : 01 -JALAN KOTA KINABALU -KUDAT
LOCATION : CH120.130(MEDIUM)

R01 - VEGETATION CLEARING



BEFORE



IN PROGRESS



AFTER

DISTRICT : KUDAT
ROUTENO : 01 -JALAN KOTA KINABALU -KUDAT
LOCATION : CH145.42 (LHS & RHS)

R01 - VEGETATION CLEARING



BEFORE



IN PROGRESS



AFTER

**VEGETATION CLEARING
GRAND SUMMARY**

MONTH: MAY 2008

DISTRICT	ROUTE NO.	ROAD NAME	Previous Month	Current Month	Cummulative
			(m ²)	(m ²)	(m ²)
Kota Belud	01	Jalan Kota Kinabalu-Kudat	2,378.85	0.00	2,378.85
Kota Marudu	01	Jalan Kota Kinabalu-Kudat	0.00	250.00	250.00
Kudat	01	Jalan Kota Kinabalu-Kudat	1,198.40	300.00	1,498.40
Tuaran	01	Jalan Kota Kinabalu-Kudat	0.00	0.00	0.00
	22	Jalan Kota Kinabalu-Sandakan	0.00	0.00	0.00
	503	Jalan Berungis-Kota Belud	0.00	0.00	0.00
Kota Kinabalu	01	Jalan Kota Kinabalu-Kudat	0.00	0.00	0.00
	01	Jalan Kota Kinabalu-Sindumin	0.00	0.00	0.00
	606	Jalan Susur Sepangar Bay	0.00	0.00	0.00
	607	Jalan Masuk Ke Pelabuhan Baru	0.00	0.00	0.00
	608	Jalan K Masuk Ke Lapangan Terbang Lama	0.00	0.00	0.00
Penampang	01	Jalan Kota Kinabalu-Sindumin	97.50	0.00	97.50
	500	Jalan Kota Kinabalu-Keningau-Tenom	0.00	0.00	0.00
	501	Jalan Kota Kinabalu-Penampang-Lok Kawi	0.00	0.00	0.00
Papar	01	Jalan Kota Kinabalu-Sindumin	0.00	0.00	0.00
Ranau	22	Jalan Kota Kinabalu-Sandakan	0.00	0.00	0.00
Tambunam	500	Jalan Kota Kinabalu-Keningau-Tenom	75.10	0.00	75.10
Keningau	500	Jalan Kota Kinabalu-Keningau-Tenom	431.45	0.00	431.45
Tenom	500	Jalan Kota Kinabalu-Keningau-Tenom	200.35	0.00	200.35
Beaufort	01	Jalan Kota Kinabalu-Sindumin	0.00	0.00	0.00
	502	Jalan Beaufort-Menumbok	431.27	0.00	431.27
Sipitang	01	Jalan Kota Kinabalu-Sindumin	0.00	0.00	0.00
Kuala Penyu	502	Jalan Beaufort-Menumbok	808.90	2.20	811.10
TOTAL			5,621.82	552.20	6,174.02

LINTASAN RESOURCES SDN. BHD.

M A I N T E N A N C E O F F E D E R A L R O A D S - W E S T C O A S T , S A B A H

SUMMARY - VEGETATION CLEARING RECORD

Month : MAY 2008

ITEM	DISTRICT	ROUTE NO.	ROAD NAME	AREA (m ²)		
				PREVIOUS MONTH	CURRENT MONTH	CUM. MONTH
1	Beaufort	01	Jalan Kota Kinabalu - Sindumin	-	-	-
2	Sipitang	01	Jalan Kota Kinabalu - Sindumin	-	-	-
3	Beaufort	502	Jalan Beaufort - Menumbok	431.27	-	431.27
4	Kuala Penyu	502	Jalan Beaufort - Menumbok	808.90	2.20	811.10
TOTAL				1,240.17	2.20	1,242.37

LINTASAN RESOURCES SDN. BHD.
 MAINTENANCE OF FEDERAL ROADS - WEST COAST, SABAH
R01 VEGETATION CLEARING RECORD

DISTRICT: BEAUFORT

ROUTE NO. 502

ROAD NAME: JALAN BEAUFORT - MENUMBOK

MONTH: MAY 2008

ITEM	DATE	LOCATION (CH)	LENGTH (m)	WIDTH (m)	AREA (m ²)	REMARKS
BROUGHT FORWARD:					431.27	
1						
2						
3						
4						
5						
6						
7						
8						
9						
10						
11						
12						
13						
14						
15						
16						
17						
18						
19						
20						
21						
22						
23						
24						
25						
26						
27						
28						
29						
30						
CARRIED FORWARD:					431.27	

LINTASAN RESOURCES SDN. BHD.

MAINTENANCE OF FEDERAL ROADS - WEST COAST, SABAH

SUMMARY - VEGETATION CLEARING RECORD

Month: MAY 2008

ITEM	DISTRICT	ROUTE NO.	ROAD NAME	AREA (m ²)		
				PREVIOUS MONTH	CURRENT MONTH	CUM. MONTH
1	Tambunan	500	Jalan Kota Kinabalu - Keningau - Tenom	75.10	-	75.10
2	Keningau	500	Jalan Kota Kinabalu - Keningau - Tenom	431.45	-	431.45
3	Tenom	500	Jalan Kota Kinabalu - Keningau - Tenom	200.35	-	200.35
TOTAL				706.90	-	706.90

LINTASAN RESOURCES SDN. BHD.
 MAINTENANCE OF FEDERAL ROADS - WEST COAST, SABAH
R01 VEGETATION CLEARING RECORD

DISTRICT: TAMBUNAN

ROUTE NO. 500

ROAD NAME: JLN K. KINABALU - KENINGAU-TENOM

MONTH: May 2008

ITEM	DATE	LOCATION (CH)	LENGTH (m)	WIDTH (m)	AREA (m ²)	REMARKS
BROUGHT FORWARD:					75.10	
1						
2						
3						
4						
5						
6						
7						
8						
9						
10						
11						
12						
13						
14						
15						
16						
17						
18						
19						
20						
21						
22						
23						
24						
25						
26						
27						
28						
29						
30						
TOTAL :					75.10	

LINTASAN RESOURCES SDN. BHD.

MAINTENANCE OF FEDERAL ROADS - WEST COAST, SABAH

R01 VEGETATION CLEARING RECORD

DISTRICT: KENINGAU

ROUTE NO. 500

ROAD NAME: JLN K. KINABALU - KENINGAU-TENOM

MONTH: May 2008

ITEM	DATE	LOCATION (CH)	LENGTH (m)	WIDTH (m)	AREA (m ²)	REMARKS
BROUGHT FORWARD:					431.45	
1						
2						
3						
4						
5						
6						
7						
8						
9						
10						
11						
12						
13						
14						
15						
16						
17						
18						
19						
20						
21						
22						
23						
24						
25						
26						
27						
28						
29						
30						
TOTAL :					431.45	

LINTASAN RESOURCES SDN. BHD.
 MAINTENANCE OF FEDERAL ROADS - WEST COAST, SABAH
R01 VEGETATION CLEARING RECORD

DISTRICT: TENOM

ROUTE NO. 500

ROAD NAME: JLN K. KINABALU - KENINGAU-TENOM

MONTH: May 2008

ITEM	DATE	LOCATION (CH)	LENGTH (m)	WIDTH (m)	AREA (m ²)	REMARKS
BROUGHT FORWARD:					200.35	
1						
2						
3						
4						
5						
6						
7						
8						
9						
10						
11						
12						
13						
14						
15						
16						
17						
18						
19						
20						
21						
22						
23						
24						
25						
26						
27						
28						
29						
30						
TOTAL :					200.35	

LINTASAN RESOURCES SDN. BHD.

MAINTENANCE OF FEDERAL ROADS - WEST COAST, SABAH

SUMMARY - VEGETATION CLEARING RECORD

Month: May 2008

ITEM	DISTRICT	ROUTE NO.	ROAD NAME	AREA (m ²)		
				PREVIOUS MONTH	CURRENT MONTH	CUM. MONTH
1	Kota Kinabalu	01	Jalan Kota Kinabalu - Sindumin	-	-	-
2	Penampang	01	Jalan Kota Kinabalu - Sindumin	97.50	-	97.50
3	Papar	01	Jalan Kota Kinabalu - Sindumin	-	-	-
4	Penampang	500	Jalan Kota Kinabalu - Keningau - Tenom	-	-	-
5	Penampang	501	Jalan Kota Kinabalu - Penampang - Lok Kawi	-	-	-
6	Kota Kinabalu	608	Jalan masuk ke Lapangan Terbang Lama, K.K.	-	-	-
TOTAL				-	-	-

LINTASAN RESOURCES SDN. BHD.
MAINTENANCE OF FEDERAL ROADS - WEST COAST, SABAH
R01 VEGETATION CLEARING RECORD

DISTRICT: PENAMPANG
ROUTE NO. 01
ROAD NAME: JALAN KOTA KINABALU-SINDUMIN
MONTH: MAY 2008

ITEM	DATE	LOCATION (CH)	LENGTH (m)	WIDTH (m)	AREA (m ²)	REMARKS
BROUGHT FORWARD:					97.50	
TOTAL:					97.50	

LINTASAN RESOURCES SDN. BHD.

MAINTENANCE OF FEDERAL ROADS - WEST COAST, SABAH

SUMMARY - VEGETATION CLEARING RECORD

Month : MAY 2008

ITEM	DISTRICT	ROUTE NO.	ROAD NAME	AREA (m ²)		
				PREVIOUS MONTH	CURRENT MONTH	CUM. MONTH
1	KOTA BELUD	01	JALAN KOTA KINABALU - KUDAT	2,378.85	-	2,378.85
2	KOTA MARUDU	01	JALAN KOTA KINABALU - KUDAT	-	250.00	250.00
3	KUDAT	01	JALAN KOTA KINABALU - KUDAT	1,198.40	300.00	1,498.40
TOTAL				3,577.25	550.00	4,127.25

LINTASAN RESOURCES SDN. BHD.
MAINTENANCE OF FEDERAL ROADS - WEST COAST, SABAH
R01 VEGETATION CLEARING RECORD

DISTRICT: KOTA BELUD

ROUTE NO. 01

ROAD NAME: JALAN KOTA KINABALU - KUDAT

MONTH: MAY 2008

ITEM	DATE	LOCATION (CH)	LENGTH (m)	WIDTH (m)	AREA (m ²)	REMARKS
BROUGHT FORWARD:					2,378.85	
1						
2						
3						
4						
5						
6						
7						
8						
9						
10						
11						
12						
13						
14						
15						
16						
17						
18						
19						
20						
21						
22						
23						
24						
25						
26						
27						
28						
29						
30						
BALANCE END OF MAY :					2,378.85	

LINTASAN RESOURCES SDN. BHD.

M A I N T E N A N C E O F F E D E R A L R O A D S - L A B U A N F T .

SUMMARY - VEGETATION CLEARING RECORD

Month : MAY 2008

ITEM	DISTRICT	ROUTE NO.	ROAD NAME	AREA (m ²)		
				PREVIOUS MONTH	CURRENT MONTH	CUM MONTH
1	W.P LABUAN	L 700	JALAN TUN MUSTAPHA	3,970.00	3,601.00	7,571.00
2	W.P LABUAN	L 703	JALAN OKK DAUD	-	1,680.00	1,680.00
3	W.P LABUAN	L 703	JALAN SG. LADA/SG. PAGAR	-	1,896.00	1,896.00
4	W.P LABUAN	L 704	JALAN MOHAMMAD SALLEH	-	1,653.00	1,653.00
5	W.P LABUAN	L 711	JALAN KG. JAWA/JUMIDAR BUYONG	18,140.00	-	18,140.00
6	W.P LABUAN	L 745	JALAN KOMPLEKS WATERFRONT	3,040.00	2,023.00	5,063.00
7	W.P LABUAN	L 747	JALAN MERDEKA	18,060.00	-	18,060.00
8	W.P LABUAN	L 724	JALAN MASJID	850.00	-	850.00
9	W.P LABUAN	L 733	JALAN PENY'BUNG BG. TANJUNG	-	561.00	561.00
TOTAL				44,060.00	11,414.00	55,474.00

LINTASAN RESOURCES SDN. BHD.
 MAINTENANCE OF FEDERAL ROADS - LABUAN FT.
R01 VEGETATION CLEARING RECORD

DISTRICT: W.P LABUAN

ROUTE NO. L 700

ROAD NAME: TUN MUSTAPHA

MONTH: MAY 2008

ITEM	DATE	LOCATION (CH)	LENGTH (m)	WIDTH (m)	AREA (m ²)	REMARKS
BROUGHT FORWARD:						3,970.00
1	08/05/2008	0.28	2,770.00	1.30	3,601.00	
TOTAL :					7,571.00	

LINTASAN RESOURCES SDN. BHD.
 MAINTENANCE OF FEDERAL ROADS - LABUAN FT.
R01 VEGETATION CLEARING RECORD

DISTRICT: W.P LABUAN

ROUTE NO. L 733

ROAD NAME: PENY'BUNG BG. TANJUNG

MONTH: MAY 2008

ITEM	DATE	LOCATION (CH)	LENGTH (m)	WIDTH (m)	AREA (m ²)	REMARKS
BROUGHT FORWARD:					0.00	
1	10/05/2008	0.07	330.00	1.70	561.00	
TOTAL :					561.00	

LINTASAN RESOURCES SDN. BHD.
MAINTENANCE OF FEDERAL ROADS - LABUAN FT.
R01 VEGETATION CLEARING RECORD

DISTRICT: W.P LABUAN
ROUTE NO. L 745
ROAD NAME: KOMPLEKS WATERFRONT
MONTH: MAY 2008

ITEM	DATE	LOCATION (CH)	LENGTH (m)	WIDTH (m)	AREA (m ²)	REMARKS
BROUGHT FORWARD:					3,040.00	
1	16/05/2008	0.41	1,190.00	1.70	2,023.00	
TOTAL :					5,063.00	

LINTASAN RESOURCES SDN. BHD.
 MAINTENANCE OF FEDERAL ROADS - LABUAN FT.
R01 VEGETATION CLEARING RECORD

DISTRICT: W.P LABUAN

ROUTE NO. L 703

ROAD NAME: OKK DAUD

MONTH: MAY 2008

ITEM	DATE	LOCATION (CH)	LENGTH (m)	WIDTH (m)	AREA (m ²)	REMARKS
BROUGHT FORWARD:					0.00	
1	17/05/2008	0.00	5,600.00	0.30	1,680.00	
TOTAL :					1,680.00	

LINTASAN RESOURCES SDN. BHD.
 MAINTENANCE OF FEDERAL ROADS - LABUAN FT.
R01 VEGETATION CLEARING RECORD

DISTRICT: W.P LABUAN

ROUTE NO. L 703

ROAD NAME: SG. LADA/SG. PAGAR

MONTH: MAY 2008

ITEM	DATE	LOCATION (CH)	LENGTH (m)	WIDTH (m)	AREA (m ²)	REMARKS
BROUGHT FORWARD:					0.00	
1	20/05/2008	0.00	6,320.00	0.30	1,896.00	
TOTAL :					1,896.00	

LINTASAN RESOURCES SDN. BHD.
MAINTENANCE OF FEDERAL ROADS - LABUAN FT.
R01 VEGETATION CLEARING RECORD

DISTRICT: W.P LABUAN
ROUTE NO. L 7043
ROAD NAME: MOHAMMAD SALLEH
MONTH: MAY 2008

ITEM	DATE	LOCATION (CH)	LENGTH (m)	WIDTH (m)	AREA (m ²)	REMARKS
BROUGHT FORWARD:						
1	20/05/2008	0.00	5,510.00	0.30	1,653.00	
TOTAL :					1,653.00	