

RO1

POTHOLE PATCHING

DISTRICT : BEAUFORT
ROUTE NO : 502 JALAN BEAUFORT - MENUM BOK
LOCATION : CH6.960 (KM 6.960) - RHS

R01 POTHOLE PATCHING



BEFORE



IN PROGRESS



AFTER

DISTRICT : BEAUFORT
ROUTE NO : 01 JALAN KOTA KINABALU - SINDUM IN
LOCATION : CH122.885 (KM 124.645) - LHS

R01 POTHOLE PATCHING



BEFORE



IN PROGRESS



AFTER

DISTRICT : KOTA BELUD
ROUTE NO : 01 - JALAN KOTA KINABALU - KUDAT
LOCATION : CH103.583

R01 - POTHOLE PATCHING



IN PROGRESS



AFTER

LINTASAN RESOURCES SDN. BHD.
POTHOLE PATCHING
GRAND SUMMARY

MONTH: JANUARY 2008

DISTRICT	ROUTE NO.	ROAD NAME	PREMIX QUANTITY		
			Previous Month	Current Month	Cummulative
			(Ton)	(Ton)	(Ton)
Kota Belud	01	Jalan Kota Kinabalu-Kudat	0.00	8.65	8.65
Kota Marudu	01	Jalan Kota Kinabalu-Kudat	0.00	1.10	1.10
Kudat	01	Jalan Kota Kinabalu-Kudat	0.00	13.17	13.17
Tuaran	01	Jalan Kota Kinabalu-Kudat	0.00	13.28	13.28
	22	Jalan Kota Kinabalu-Sandakan	0.00	18.38	18.38
	503	Jalan Berungis-Kota Belud	0.00	1.61	1.61
Kota Kinabalu	01	Jalan Kota Kinabalu-Kudat	0.00	18.89	18.89
	01	Jalan Kota Kinabalu-Sindumin	0.00	0.62	0.62
	606	Jalan Susur Sepangar Bay	0.00	26.40	26.40
	607	Jalan Masuk Ke Pelabuhan Baru	0.00	0.00	0.00
	608	Jalan Masuk Ke Lapangan Terbang Lama	0.00	0.00	0.00
Penampang	01	Jalan Kota Kinabalu-Sindumin	0.00	11.63	11.63
	500	Jalan Kota Kinabalu-Keningau-Tenom	0.00	12.89	12.89
	501	Jalan Kota Kinabalu-Penampang-Lok Kawi	0.00	4.66	4.66
Papar	01	Jalan Kota Kinabalu-Sindumin	0.00	39.31	39.31
Ranau	22	Jalan Kota Kinabalu-Sandakan	0.00	32.83	32.83
Tambunam	500	Jalan Kota Kinabalu-Keningau-Tenom	0.00	4.85	4.85
Keningau	500	Jalan Kota Kinabalu-Keningau-Tenom	0.00	1.33	1.33
Tenom	500	Jalan Kota Kinabalu-Keningau-Tenom	0.00	0.48	0.48
Beaufort	01	Jalan Kota Kinabalu-Sindumin	0.00	7.30	7.30
	502	Jalan Beaufort-Menumbok	0.00	13.01	13.01
Sipitang	01	Jalan Kota Kinabalu-Sindumin	0.00	1.63	1.63
Kuala Penyu	502	Jalan Beaufort-Menumbok	0.00	7.20	7.20
TO TAL			0.00	239.22	239.22

LINTASAN RESOURCES SDN BHD.
 MAINTENANCE OF FEDERAL ROADS - WEST COAST, SABAH

SUMMARY - POTHOLE PATCHING RECORD

Month: JANUARY 2008

ITEM	DISTRICT	ROUTE NO.	ROAD NAME	AREA (m ²)			VOLUME (m ³)			PREMIX QUANTITY (TON)		
				PREVIOUS MONTH	CURRENT MONTH	CUM. MONTH	PREVIOUS MONTH	CURRENT MONTH	CUM. MONTH	PREVIOUS MONTH	CURRENT MONTH	CUM. MONTH
1	Beaufort	01	Jalan Kota Kinabalu - Sindumin	0.000	63.875	63.875	0.000	3.146	3.146	0.000	7.300	7.300
2	Sipitang	01	Jalan Kota Kinabalu - Sindumin	0.000	14.010	14.010	0.000	0.702	0.702	0.000	1.631	1.631
3	Beaufort	502	Jalan Beaufort - Menumbok	0.000	125.365	125.365	0.000	5.605	5.605	0.000	13.010	13.010
4	Kuala Penyu	502	Jalan Beaufort - Menumbok	0.000	62.830	62.830	0.000	3.104	3.104	0.000	7.201	7.201
TOTAL:				0.000	266.080	266.080	0.000	12.557	12.557	0.000	29.142	29.142

LINTASAN RESOURCES SDN. BHD.
 MAINTENANCE OF FEDERAL ROADS - WEST COAST, SABAH
R01 POT HOLE PATCHING RECORD

DISTRICT: BEAUFORT

ROUTE NO. 01

ROAD NAME: JALAN KOTA KINABALU - SINDUMIN

MONTH: JANUARY 2008

ITEM	DATE	CHAINAGE	Length (m)	Width (m)	Depth (m)	AREA (m2)	VOLUME (m3)	PREMIX QUANTITY (ton)	REMARKS
BROUGHT FORWARD:			-	-	-	0.000	0.000	0.000	-
1	08/01/2008	122.327	2.30	0.70	0.020	1.610	0.032	0.074	RHS
2	08/01/2008	122.328	2.40	1.00	0.050	2.400	0.120	0.278	RHS
3	08/01/2008	122.885	0.70	0.60	0.050	0.420	0.021	0.049	LHS
4	08/01/2008	123.684	2.60	1.40	0.050	3.640	0.182	0.422	RHS
5	08/01/2008	123.792	2.40	1.30	0.050	3.120	0.156	0.362	RHS
6	08/01/2008	123.795	1.30	1.20	0.050	1.560	0.078	0.181	RHS
7	08/01/2008	123.803	1.90	0.90	0.050	1.710	0.086	0.200	RHS
8	09/01/2008	72.482	1.20	0.80	0.050	0.960	0.048	0.111	LHS
9	09/01/2008	72.490	4.30	1.20	0.050	5.160	0.258	0.599	LHS
10	09/01/2008	72.495	1.50	0.75	0.050	1.125	0.056	0.130	LHS
11	09/01/2008	72.605	1.00	0.80	0.050	0.800	0.040	0.093	LHS
12	09/01/2008	72.730	1.20	0.80	0.050	0.960	0.048	0.111	LHS
13	09/01/2008	87.570	2.40	1.50	0.050	3.600	0.180	0.418	RHS
14	14/01/2008	86.000	5.00	1.70	0.050	8.500	0.425	0.986	LHS
15	14/01/2008	89.501	3.20	1.50	0.050	4.800	0.240	0.557	RHS
16	14/01/2008	89.505	2.20	1.70	0.050	3.740	0.187	0.434	RHS
17	21/01/2008	106.263	0.90	0.60	0.050	0.540	0.027	0.063	RHS
18	21/01/2008	114.010	8.20	1.90	0.050	15.580	0.779	1.807	RHS
19	22/01/2008	90.670	1.90	0.70	0.050	1.330	0.067	0.155	RHS
20	22/01/2008	94.700	0.40	0.40	0.050	0.160	0.008	0.019	RHS
21	22/01/2008	94.705	2.70	0.80	0.050	2.160	0.108	0.251	RHS
22									
23									
24									
25									
26									
27									
28									
29									
30									
CARRIED FORWARD:						63.875	3.146	7.300	

LINTASAN RESOURCES SDN. BHD.
MAINTENANCE OF FEDERAL ROADS - WEST COAST, SABAH
R01 POTHOLE PATCHING RECORD

DISTRICT: BEAUFORT

ROUTE NO. 502

ROAD NAME: JALAN BEAUFORT - MENUKOK

MONTH: JANUARY 2008

ITEM	DATE	CHAINAGE	Length (m)	Width (m)	Depth (m)	AREA (m2)	VOLUME (m3)	PREMIX QUANTITY (ton)	REMARKS
BROUGHT FORWARD:			-	-	-	0.000	0.000	0.000	-
1	03/01/2008	4.460	4.40	1.70	0.050	7.480	0.374	0.868	M
2	03/01/2008	4.461	3.90	0.70	0.050	2.730	0.137	0.318	M
3	04/01/2008	10.380	2.30	3.60	0.050	8.280	0.414	0.960	LHS
4	04/01/2008	10.383	0.50	0.30	0.050	0.150	0.008	0.019	LHS
5	05/01/2008	19.060	5.10	2.30	0.050	11.730	0.587	1.362	LHS
6	05/01/2008	19.063	4.20	3.50	0.020	14.700	0.294	0.682	LHS
7	05/01/2008	19.065	3.50	1.00	0.020	3.500	0.070	0.162	LHS
8	15/01/2008	0.470	1.50	0.50	0.050	0.750	0.038	0.088	LHS
9	15/01/2008	0.480	2.40	0.30	0.050	0.720	0.036	0.084	LHS
10	15/01/2008	2.510	0.40	0.40	0.050	0.160	0.008	0.019	LHS
11	15/01/2008	2.511	0.60	0.40	0.050	0.240	0.012	0.028	LHS
12	15/01/2008	2.512	0.40	0.30	0.050	0.120	0.006	0.014	LHS
13	15/01/2008	2.513	0.50	0.40	0.050	0.200	0.010	0.023	LHS
14	15/01/2008	2.515	0.60	0.50	0.050	0.300	0.015	0.035	LHS
15	15/01/2008	2.897	4.00	1.20	0.050	4.800	0.240	0.557	LHS
16	15/01/2008	3.038	1.30	1.10	0.050	1.430	0.072	0.167	LHS
17	15/01/2008	6.292	0.60	0.40	0.050	0.240	0.012	0.028	RHS
18	15/01/2008	6.960	0.60	0.40	0.050	0.240	0.012	0.028	RHS
19	15/01/2008	8.750	0.55	0.40	0.050	0.220	0.011	0.026	RHS
20	15/01/2008	10.305	1.60	1.20	0.050	1.920	0.096	0.223	RHS
21	15/01/2008	10.320	1.20	1.00	0.050	1.200	0.060	0.139	RHS
22	16/01/2008	17.915	3.50	3.30	0.050	11.550	0.578	1.341	LHS
23	16/01/2008	17.915	3.50	3.30	0.050	11.550	0.578	1.341	RHS
24	17/01/2008	17.170	3.50	2.30	0.050	8.050	0.403	0.935	LHS
25	17/01/2008	19.060	4.30	1.40	0.050	6.020	0.301	0.698	RHS
26	22/01/2008	1.640	0.40	0.20	0.050	0.080	0.004	0.009	LHS
27	22/01/2008	1.641	0.40	0.30	0.050	0.120	0.006	0.014	LHS
28	22/01/2008	1.645	0.30	0.20	0.050	0.060	0.003	0.007	LHS
29	22/01/2008	1.855	1.50	1.30	0.050	1.950	0.098	0.227	LHS
30	22/01/2008	4.340	0.60	0.50	0.050	0.300	0.015	0.035	RHS
CARRIED FORWARD:						100.790	4.498	10.437	

BROUGHT FORWARD:		-	-	-	100.790	4.498	10.437	-	
31	23/01/2008	6.114	2.60	1.60	0.020	4.160	0.083	0.193	LHS
32	23/01/2008	7.105	0.80	0.50	0.050	0.400	0.020	0.046	RHS
33	23/01/2008	8.240	0.50	0.30	0.050	0.150	0.008	0.019	RHS
34	23/01/2008	8.250	0.40	0.40	0.050	0.160	0.008	0.019	RHS
35	23/01/2008	8.392	0.40	0.40	0.050	0.160	0.008	0.019	RHS
36	23/01/2008	8.410	0.30	0.30	0.050	0.090	0.005	0.012	RHS
37	23/01/2008	8.430	0.40	0.30	0.050	0.120	0.006	0.014	RHS
38	23/01/2008	8.467	0.30	0.30	0.050	0.090	0.005	0.012	LHS
39	23/01/2008	8.504	1.90	0.45	0.050	0.855	0.043	0.100	RHS
40	23/01/2008	8.588	0.50	0.20	0.050	0.100	0.005	0.012	LHS
41	23/01/2008	8.589	0.50	0.40	0.050	0.200	0.010	0.023	LHS
42	23/01/2008	8.806	0.50	0.40	0.050	0.200	0.010	0.023	LHS
43	23/01/2008	8.840	0.70	0.40	0.050	0.280	0.014	0.032	RHS
44	23/01/2008	9.690	0.40	0.30	0.050	0.120	0.006	0.014	LHS
45	23/01/2008	9.695	0.50	0.30	0.050	0.150	0.008	0.019	LHS
46	23/01/2008	9.700	0.60	0.30	0.050	0.180	0.009	0.021	LHS
47	23/01/2008	12.050	1.90	1.30	0.050	2.470	0.124	0.288	RHS
48	24/01/2008	13.190	3.20	1.50	0.050	4.800	0.240	0.557	RHS
49	24/01/2008	13.195	2.60	1.80	0.050	4.680	0.234	0.543	RHS
50	24/01/2008	17.170	1.30	0.50	0.050	0.650	0.033	0.077	RHS
51	24/01/2008	17.128	1.20	0.50	0.050	0.600	0.030	0.070	RHS
52	24/01/2008	17.195	0.80	0.40	0.050	0.320	0.016	0.037	LHS
53	24/01/2008	17.195	1.10	0.40	0.050	0.440	0.022	0.051	RHS
54	24/01/2008	17.227	0.50	0.40	0.050	0.200	0.010	0.023	RHS
55	24/01/2008	17.228	3.10	0.40	0.050	1.240	0.062	0.144	LHS
56	24/01/2008	17.235	1.00	0.60	0.050	0.600	0.030	0.070	LHS
57	24/01/2008	17.235	1.20	0.50	0.050	0.600	0.030	0.070	RHS
58	24/01/2008	17.236	1.40	0.40	0.050	0.560	0.028	0.065	LHS
59									
60									
CARRIED FORWARD:					125.365	5.605	13.010		

LINTASAN RESOURCES SDN. BHD.
MAINTENANCE OF FEDERAL ROADS - WEST COAST, SABAH
R01 POTHOLE PATCHING RECORD

DISTRICT: KUALA PENYU

ROUTE NO. 502

ROAD NAME: JALAN BEAUFORT - MENUMBOK

MONTH: JANUARY 2008

ITEM	DATE	CHAINAGE	Length (m)	Width (m)	Depth (m)	AREA (m2)	VOLUME (m3)	PREMIX QUANTITY (ton)	REMARKS
BROUGHT FORWARD:			-	-	-	0.000	0.000	0.000	
1	11/01/2008	28.750	1.10	0.50	0.050	0.550	0.028	0.065	RHS
2	11/01/2008	29.335	0.60	0.50	0.050	0.300	0.015	0.035	RHS
3	11/01/2008	30.487	0.50	0.40	0.020	0.200	0.004	0.009	LHS
4	11/01/2008	30.491	2.10	0.30	0.020	0.630	0.013	0.030	LHS
5	11/01/2008	30.495	1.10	0.45	0.020	0.495	0.010	0.023	LHS
6	11/01/2008	32.905	2.40	0.70	0.050	1.680	0.084	0.195	RHS
7	11/01/2008	42.040	0.50	0.40	0.050	0.200	0.010	0.023	LHS
8	11/01/2008	42.680	2.20	1.80	0.050	3.960	0.198	0.459	RHS
9	11/01/2008	49.390	1.55	0.50	0.050	0.775	0.039	0.090	LHS
10	11/01/2008	49.985	1.80	0.40	0.050	0.720	0.036	0.084	LHS
11	11/01/2008	49.986	1.20	0.70	0.050	0.840	0.042	0.097	LHS
12	11/01/2008	57.790	4.50	1.50	0.050	6.750	0.338	0.784	LHS
13	12/01/2008	59.428	6.00	2.00	0.050	12.000	0.600	1.392	LHS
14	12/01/2008	59.435	6.00	1.30	0.050	7.800	0.390	0.905	LHS
15	18/01/2008	43.241	2.80	2.30	0.050	6.440	0.322	0.747	LHS
16	18/01/2008	43.460	2.20	2.00	0.050	4.400	0.220	0.510	LHS
17	18/01/2008	45.030	4.30	1.20	0.050	5.160	0.258	0.599	RHS
18	19/01/2008	59.450	2.40	0.90	0.050	2.160	0.108	0.251	LHS
19	19/01/2008	59.453	2.00	1.50	0.050	3.000	0.150	0.348	LHS
20	19/01/2008	59.458	1.00	0.70	0.050	0.700	0.035	0.081	LHS
21	19/01/2008	59.460	2.80	1.40	0.050	3.920	0.196	0.455	LHS
22	19/01/2008	59.461	0.50	0.30	0.050	0.150	0.008	0.019	LHS
23									
24									
25									
26									
27									
28									
29									
30									
CARRIED FORWARD:						62.830	3.104	7.201	

LINTASAN RESOURCES SDN BHD.
 MAINTENANCE OF FEDERAL ROADS - WEST COAST, SABAH

SUMMARY - POTHOLE PATCHING RECORD

Month : JANUARY 2008

ITEM	DISTRICT	ROUTE NO.	ROAD NAME	AREA (m ²)			VOLUME (m ³)			PREMIX QUANTITY (TON)		
				PREVIOUS MONTH	CURRENT MONTH	CUM. MONTH	PREVIOUS MONTH	CURRENT MONTH	CUM. MONTH	PREVIOUS MONTH	CURRENT MONTH	CUM. MONTH
1	TAMBUNAN	500	Jalan Kota Kinabalu - Keningau - Tenom	-	46.82	46.82	-	2.08	2.08	-	4.85	4.85
2	KENINGAU	500	Jalan Kota Kinabalu - Keningau - Tenom	-	15.51	15.51	-	0.58	0.58	-	1.33	1.33
3	TENOM	500	Jalan Kota Kinabalu - Keningau - Tenom	-	7.78	7.78	-	0.21	0.21	-	0.48	0.48
TOTAL:				-	70.11	70.11	-	2.87	2.87	-	6.66	6.66

LINTASAN RESOURCES SDN. BHD.
MAINTENANCE OF FEDERAL ROADS - WEST COAST, SABAH

R01 POTHOLE PATCHING RECORD

DISTRICT: TAMBUNAN

ROUTE NO. 500

ROAD NAME: JLN K. KINABALU - KENINGAU-TENOM

MONTH: January 2008

ITEM	DATE	CHAINAGE	Length (m)	Width (m)	Depth (m)	AREA (m2)	VOLUME (m3)	PREMIX QUANTITY (ton)	REMARKS
BROUGHT FORWARD:						0.00	0.00	0.00	
1	1/2/2008	68.913	1.30	0.80	0.075	1.04	0.08	0.19	RHS
2	1/2/2008	82.603	2.80	1.10	0.050	3.08	0.15	0.35	RHS
3	1/2/2008	83.451	1.50	1.30	0.050	1.95	0.10	0.23	LHS
4	1/2/2008	82.883	6.00	3.30	0.050	19.80	0.99	2.30	RHS
5	1/2/2008	82.887	1.30	0.90	0.050	1.17	0.06	0.14	LHS
6	1/12/2008	64.577	1.00	0.60	0.050	0.60	0.03	0.07	RHS
7	1/12/2008	64.605	0.90	0.50	0.050	0.45	0.02	0.05	RHS
8	1/12/2008	64.705	1.70	0.70	0.050	1.19	0.06	0.14	RHS
9	1/12/2008	64.721	1.80	0.70	0.050	1.26	0.06	0.14	LHS
10	1/12/2008	65.618	2.50	0.90	0.050	2.25	0.11	0.26	RHS
11	1/12/2008	65.700	2.50	0.80	0.050	2.00	0.10	0.23	RHS
12	1/14/2008	70.616	1.20	1.00	0.025	1.20	0.03	0.07	RHS
13	1/14/2008	70.620	0.90	0.50	0.025	0.45	0.01	0.02	RHS
14	1/14/2008	70.696	1.20	1.00	0.025	1.20	0.03	0.07	RHS
15	1/14/2008	68.950	1.10	0.70	0.025	0.77	0.02	0.05	RHS
16	1/14/2008	68.830	1.00	0.60	0.025	0.60	0.02	0.05	RHS
17	1/14/2008	66.193	1.20	1.10	0.025	1.32	0.03	0.07	RHS
18	1/16/2008	71.950	1.20	0.90	0.050	1.08	0.05	0.12	RHS
19	1/16/2008	71.832	1.60	0.60	0.025	0.96	0.02	0.05	RHS
20	1/16/2008	71.807	3.20	0.50	0.025	1.60	0.04	0.09	RHS
21	1/16/2008	66.070	0.90	0.50	0.025	0.45	0.01	0.02	RHS
22	1/16/2008	65.968	1.20	1.00	0.025	1.20	0.03	0.07	RHS
23	1/16/2008	65.904	1.20	1.00	0.03	1.20	0.03	0.07	RHS
24									
25									
26									
27									
28									
29									
30									
TOTAL						46.82	2.08	4.85	

LINTASAN RESOURCES SDN. BHD.
 MAINTENANCE OF FEDERAL ROADS - WEST COAST, SABAH
R01 POTHOLE PATCHING RECORD

DISTRICT: KENINGAU
ROUTE NO. 500
ROAD NAME: JLN K. KINABALU - KENINGAU-TENOM
MONTH: January 2008

ITEM	DATE	CHAINAGE	Length (m)	Width (m)	Depth (m)	AREA (m2)	VOLUME (m3)	PREMIX QUANTITY (ton)	REMARKS
BROUGHT FORWARD:						0.00	0.00	0.00	
1	1/15/2008	119.495	0.80	0.60	0.025	0.48	0.01	0.02	RHS
2	1/15/2008	119.221	0.80	0.50	0.025	0.40	0.01	0.02	LHS
3	1/15/2008	126.800	1.20	1.10	0.025	1.32	0.03	0.07	RHS
4	1/15/2008	121.095	2.10	1.40	0.025	2.94	0.07	0.16	RHS
5	1/15/2008	134.221	1.10	1.00	0.025	1.10	0.03	0.07	LHS
6	1/15/2008	134.195	1.90	0.80	0.025	1.52	0.04	0.09	LHS
7	1/18/2008	107.234	3.10	2.50	0.050	7.75	0.39	0.90	LHS
8									
9									
10									
11									
12									
13									
14									
15									
16									
17									
18									
19									
20									
21									
22									
23									
24									
25									
26									
27									
28									
29									
30									
TOTAL						15.51	0.58	1.33	

LINTASAN RESOURCES SDN. BHD.
 MAINTENANCE OF FEDERAL ROADS - WEST COAST, SABAH

R01 POTHOLE PATCHING RECORD

DISTRICT: TENOM

ROUTE NO. 500

ROAD NAME: JLN K. KINABALU - KENINGAU-TENOM

MONTH: January 2008

ITEM	DATE	CHAINAGE	Length (m)	Width (m)	Depth (m)	AREA (m2)	VOLUME (m3)	PREMIX QUANTITY (ton)	REMARKS
BROUGHT FORWARD:						0.00	0.00	0.00	
1	1/17/2005	164.280	3.00	1.00	0.03	3.00	0.08	0.19	LHS
2	1/17/2005	164.280	2.70	1.00	0.03	2.70	0.07	0.16	RHS
3	1/17/2005	164.274	0.70	0.40	0.03	0.28	0.01	0.02	RHS
4	1/17/2005	164.272	0.60	0.40	0.03	0.24	0.01	0.02	RHS
5	1/17/2005	164.270	0.60	0.40	0.03	0.24	0.01	0.02	RHS
6	1/17/2005	163.180	1.00	0.90	0.03	0.90	0.02	0.05	LHS
7	1/17/2005	163.181	0.70	0.60	0.03	0.42	0.01	0.02	LHS
8									
9									
10									
11									
12									
13									
14									
15									
16									
17									
18									
19									
20									
21									
22									
23									
24									
25									
26									
27									
28									
29									
30									
TOTAL						7.78	0.21	0.48	

LINTASAN RESOURCES SDN BHD.
 MAINTENANCE OF FEDERAL ROADS - WEST COAST, SABAH

SUMMARY - POTHOLE PATCHING RECORD

Month: January 2008

ITEM	DISTRICT	ROUTE NO.	ROAD NAME	AREA (m ²)			VOLUME (m ³)			PREMIX QUANTITY (TON)		
				PREVIOUS MONTH	CURRENT MONTH	CUM. MONTH	PREVIOUS MONTH	CURRENT MONTH	CUM. MONTH	PREVIOUS MONTH	CURRENT MONTH	CUM. MONTH
1	Kota Kinabalu	01	Jalan Kota Kinabalu - Kudat	-	245.19	245.19	-	8.14	8.14	-	18.89	18.89
2	Tuaran	01	Jalan Kota Kinabalu - Kudat	-	134.26	134.26	-	5.73	5.73	-	13.28	13.28
3	Tuaran	22	Jalan Kota Kinabalu - Sandakan	-	163.71	163.71	-	7.92	7.92	-	18.38	18.38
4	Tuaran	503	Jalan Berungis - Kota Belud	-	17.55	17.55	-	0.69	0.69	-	1.61	1.61
5	Kota Kinabalu	606	Jalan Susur Sepangar Bay	-	226.34	226.34	-	11.38	11.38	-	26.40	26.40
6	Kota Kinabalu	607	Jalan Masuk Ke Pelabuhan Baru, KK	-	-	-	-	-	-	-	-	-
TOTAL:				-	787.05	787.05	-	33.86	33.86	-	78.56	78.56

LINTASAN RESOURCES SDN. BHD.
MAINTENANCE OF FEDERAL ROADS - WEST COAST, SABAH
R01 POTHOLE PATCHING RECORD

DISTRICT: KOTA KINABALU

ROUTE NO. 01

ROAD NAME: JALAN KOTA KINABALU - KUDAT

MONTH: JANUARY 2008

ITEM	DATE	CHAINAGE	Length (m)	Width (m)	Depth (m)	AREA (m2)	VOLUME (m3)	PREMIX QUANTITY (ton)	REMARKS
BROUGHT FORWARD:			-	-	-	0.00	0.00	0.00	
1	02/01/2008	10.705	0.90	0.70	0.025	0.63	0.02	0.04	RHS
2	02/01/2008	10.705	1.40	1.20	0.025	1.68	0.04	0.10	RHS
3	02/01/2008	10.705	1.20	0.90	0.025	1.08	0.03	0.06	RHS
4	02/01/2008	10.695	0.90	0.70	0.025	0.63	0.02	0.04	RHS
5	02/01/2008	10.685	1.90	0.70	0.025	1.33	0.03	0.08	RHS
6	02/01/2008	10.630	1.20	1.20	0.025	1.44	0.04	0.08	RHS
7	02/01/2008	10.525	1.90	0.60	0.025	1.14	0.03	0.07	RHS
8	02/01/2008	10.520	2.60	1.00	0.025	2.60	0.07	0.15	RHS
9	02/01/2008	10.520	1.90	0.60	0.025	1.14	0.03	0.07	RHS
10	02/01/2008	10.515	0.70	0.60	0.025	0.42	0.01	0.02	RHS
11	02/01/2008	10.500	3.20	0.80	0.025	2.56	0.06	0.15	RHS
12	02/01/2008	10.495	1.60	0.80	0.025	1.28	0.03	0.07	RHS
13	02/01/2008	10.475	1.10	0.60	0.025	0.66	0.02	0.04	RHS
14	02/01/2008	10.460	1.50	0.80	0.025	1.20	0.03	0.07	RHS
15	02/01/2008	10.340	1.50	0.70	0.025	1.05	0.03	0.06	RHS
16	02/01/2008	10.335	3.20	0.70	0.025	2.24	0.06	0.13	RHS
17	02/01/2008	10.335	1.90	1.00	0.025	1.90	0.05	0.11	RHS
18	02/01/2008	10.335	0.60	0.50	0.025	0.30	0.01	0.02	RHS
19	02/01/2008	10.330	1.30	0.90	0.025	1.17	0.03	0.07	RHS
20	02/01/2008	10.330	1.80	0.80	0.025	1.44	0.04	0.08	RHS
21	02/01/2008	10.320	1.40	1.00	0.025	1.40	0.04	0.08	RHS
22	02/01/2008	10.130	1.80	0.70	0.025	1.26	0.03	0.07	RHS
23	02/01/2008	10.110	4.90	1.00	0.025	4.90	0.12	0.28	RHS
24	02/01/2008	10.110	0.80	0.80	0.025	0.64	0.02	0.04	RHS
25	02/01/2008	10.100	0.80	0.60	0.025	0.48	0.01	0.03	RHS
26	02/01/2008	10.100	0.90	0.60	0.025	0.54	0.01	0.03	RHS
27	02/01/2008	10.095	2.00	1.20	0.025	2.40	0.06	0.14	RHS
28	03/01/2008	9.420	3.70	1.10	0.025	4.07	0.10	0.24	LHS
29	03/01/2008	9.435	1.30	0.90	0.025	1.17	0.03	0.07	LHS
30	03/01/2008	9.442	1.30	1.00	0.025	1.30	0.03	0.08	LHS
CARRIED FORWARD :						44.05	1.10	2.55	

BROUGHT FORWARD:			-	-	-	44.05	1.10	2.55	
31	03/01/2008	9.446	2.70	1.00	0.025	2.70	0.07	0.16	RHS
32	03/01/2008	9.447	1.10	1.00	0.025	1.10	0.03	0.06	RHS
33	03/01/2008	9.450	1.40	1.00	0.025	1.40	0.04	0.08	RHS
34	03/01/2008	9.450	1.20	0.90	0.075	1.08	0.08	0.19	LHS
35	03/01/2008	9.451	3.00	1.00	0.075	3.00	0.23	0.52	LHS
36	03/01/2008	9.452	1.40	0.90	0.025	1.26	0.03	0.07	LHS
37	03/01/2008	9.510	1.40	1.10	0.075	1.54	0.12	0.27	LHS
38	03/01/2008	9.514	1.70	1.10	0.025	1.87	0.05	0.11	LHS
39	03/01/2008	9.530	1.40	0.80	0.025	1.12	0.03	0.06	LHS
40	03/01/2008	9.548	1.10	0.80	0.025	0.88	0.02	0.05	LHS
41	03/01/2008	9.550	1.60	0.90	0.025	1.44	0.04	0.08	LHS
42	03/01/2008	9.555	1.20	0.90	0.025	1.08	0.03	0.06	LHS
43	03/01/2008	9.760	0.90	0.70	0.025	0.63	0.02	0.04	RHS
44	03/01/2008	9.761	1.40	0.90	0.025	1.26	0.03	0.07	RHS
45	03/01/2008	9.770	1.30	0.70	0.025	0.91	0.02	0.05	RHS
46	03/01/2008	9.780	1.20	0.80	0.025	0.96	0.02	0.06	LHS
47	03/01/2008	9.785	2.00	1.30	0.025	2.60	0.07	0.15	LHS
48	03/01/2008	9.794	1.10	0.80	0.025	0.88	0.02	0.05	LHS
49	03/01/2008	9.820	1.20	0.90	0.025	1.08	0.03	0.06	LHS
50	03/01/2008	9.860	2.10	0.90	0.025	1.89	0.05	0.11	LHS
51	03/01/2008	9.862	1.20	0.90	0.025	1.08	0.03	0.06	LHS
52	03/01/2008	9.863	1.40	0.80	0.025	1.12	0.03	0.06	LHS
53	03/01/2008	9.864	1.00	0.80	0.025	0.80	0.02	0.05	LHS
54	03/01/2008	9.952	0.90	0.80	0.025	0.72	0.02	0.04	LHS
55	03/01/2008	9.953	2.10	1.00	0.025	2.10	0.05	0.12	LHS
56	03/01/2008	9.954	1.10	0.80	0.025	0.88	0.02	0.05	LHS
57	03/01/2008	9.955	1.50	0.90	0.025	1.35	0.03	0.08	LHS
58	04/01/2008	4.615	2.00	0.70	0.025	1.40	0.04	0.08	RHS
59	04/01/2008	4.615	1.40	1.30	0.025	1.82	0.05	0.11	RHS
60	04/01/2008	4.615	3.30	0.90	0.025	2.97	0.07	0.17	RHS
CARRIED FORWARD :						86.97	2.46	5.70	

BROUGHT FORWARD:			-	-	-	86.97	2.46	5.70	
61	04/01/2008	3.960	2.00	1.10	0.025	2.20	0.06	0.13	RHS
62	04/01/2008	3.960	1.50	1.50	0.025	2.25	0.06	0.13	RHS
63	04/01/2008	3.790	1.90	0.90	0.025	1.71	0.04	0.10	LHS
64	04/01/2008	4.350	1.10	0.60	0.050	0.66	0.03	0.08	LHS
65	04/01/2008	4.350	0.60	1.40	0.050	0.84	0.04	0.10	LHS
66	04/01/2008	4.358	0.70	1.20	0.050	0.84	0.04	0.10	LHS
67	04/01/2008	10.000	1.90	1.00	0.025	1.90	0.05	0.11	LHS
68	04/01/2008	10.004	1.30	0.80	0.025	1.04	0.03	0.06	LHS
69	04/01/2008	10.010	0.60	0.60	0.025	0.36	0.01	0.02	LHS
70	04/01/2008	10.016	0.90	0.90	0.025	0.81	0.02	0.05	LHS
71	04/01/2008	10.250	1.90	1.10	0.025	2.09	0.05	0.12	LHS
72	04/01/2008	10.258	1.30	0.90	0.025	1.17	0.03	0.07	LHS
73	04/01/2008	10.315	0.90	0.80	0.025	0.72	0.02	0.04	LHS
74	04/01/2008	10.340	0.60	1.30	0.025	0.78	0.02	0.05	LHS
75	04/01/2008	10.340	0.70	1.40	0.025	0.98	0.02	0.06	LHS
76	04/01/2008	10.347	1.40	0.70	0.025	0.98	0.02	0.06	LHS
77	04/01/2008	10.640	8.90	1.10	0.025	9.79	0.24	0.57	LHS
78	04/01/2008	10.650	0.90	1.00	0.025	0.90	0.02	0.05	LHS
79	04/01/2008	10.670	0.90	0.80	0.025	0.72	0.02	0.04	LHS
80	04/01/2008	10.678	1.00	1.00	0.025	1.00	0.03	0.06	LHS
81	04/01/2008	10.693	0.30	1.40	0.025	0.42	0.01	0.02	LHS
82	05/01/2008	10.850	3.80	1.00	0.025	3.80	0.10	0.22	RHS
83	05/01/2008	9.050	0.80	3.10	0.025	2.48	0.06	0.14	LHS
84	05/01/2008	9.050	0.60	1.10	0.025	0.66	0.02	0.04	LHS
85	05/01/2008	9.050	0.70	2.00	0.025	1.40	0.04	0.08	LHS
86	06/01/2008	9.547	0.90	0.80	0.050	0.72	0.04	0.08	RHS
87	06/01/2008	9.540	1.70	1.10	0.050	1.87	0.09	0.22	RHS
88	06/01/2008	9.540	1.30	0.70	0.050	0.91	0.05	0.11	RHS
89	06/01/2008	9.537	0.90	0.60	0.050	0.54	0.03	0.06	RHS
90	06/01/2008	9.535	2.30	1.30	0.050	2.99	0.15	0.35	RHS
CARRIED FORWARD :						134.50	3.88	9.00	

BROUGHT FORWARD:			-	-	-	134.50	3.88	9.00	
91	06/01/2008	9.530	0.90	0.60	0.050	0.54	0.03	0.06	RHS
92	06/01/2008	9.528	1.20	0.70	0.050	0.84	0.04	0.10	RHS
93	06/01/2008	9.525	0.90	0.80	0.050	0.72	0.04	0.08	RHS
94	06/01/2008	9.360	1.20	0.90	0.050	1.08	0.05	0.13	RHS
95	06/01/2008	9.354	2.00	1.00	0.050	2.00	0.10	0.23	RHS
96	06/01/2008	9.350	1.40	0.90	0.050	1.26	0.06	0.15	RHS
97	06/01/2008	9.337	1.20	0.70	0.050	0.84	0.04	0.10	RHS
98	06/01/2008	9.320	1.90	0.80	0.050	1.52	0.08	0.18	RHS
99	06/01/2008	9.320	2.10	1.60	0.050	3.36	0.17	0.39	RHS
100	06/01/2008	9.290	1.20	0.80	0.050	0.96	0.05	0.11	RHS
101	06/01/2008	9.250	1.10	0.70	0.050	0.77	0.04	0.09	RHS
102	06/01/2008	9.238	0.70	0.60	0.050	0.42	0.02	0.05	RHS
103	08/01/2008	10.670	1.30	1.20	0.025	1.56	0.04	0.09	LHS
104	08/01/2008	10.676	1.30	1.30	0.025	1.69	0.04	0.10	LHS
105	08/01/2008	10.680	1.40	1.30	0.025	1.82	0.05	0.11	LHS
106	08/01/2008	10.695	0.70	3.50	0.025	2.45	0.06	0.14	LHS
107	08/01/2008	10.700	1.60	1.00	0.025	1.60	0.04	0.09	LHS
108	08/01/2008	10.797	5.30	1.30	0.025	6.89	0.17	0.40	LHS
109	08/01/2008	10.930	1.30	1.10	0.025	1.43	0.04	0.08	LHS
110	08/01/2008	10.933	1.70	1.20	0.025	2.04	0.05	0.12	LHS
111	08/01/2008	10.934	1.10	1.10	0.025	1.21	0.03	0.07	LHS
112	08/01/2008	10.937	1.50	1.00	0.025	1.50	0.04	0.09	LHS
113	08/01/2008	10.938	2.00	1.10	0.025	2.20	0.06	0.13	LHS
114	08/01/2008	10.939	1.80	1.00	0.025	1.80	0.05	0.10	LHS
115	08/01/2008	10.941	1.20	1.00	0.025	1.20	0.03	0.07	LHS
116	08/01/2008	10.943	1.20	1.10	0.025	1.32	0.03	0.08	LHS
117	08/01/2008	10.943	1.20	1.40	0.025	1.68	0.04	0.10	LHS
118	08/01/2008	10.944	2.00	1.40	0.025	2.80	0.07	0.16	LHS
119	08/01/2008	10.946	1.30	1.10	0.025	1.43	0.04	0.08	LHS
120	08/01/2008	10.940	1.20	1.00	0.025	1.20	0.03	0.07	RHS
CARRIED FORWARD :						184.63	5.49	12.73	

BROUGHT FORWARD:			-	-	-	184.63	5.49	12.73	
121	08/01/2008	10.940	1.60	1.80	0.025	2.88	0.07	0.17	RHS
122	08/01/2008	10.940	1.20	2.00	0.025	2.40	0.06	0.14	RHS
123	09/01/2008	16.795	1.50	0.90	0.075	1.35	0.10	0.23	RHS
124	09/01/2008	16.794	1.10	1.10	0.025	1.21	0.03	0.07	RHS
125	09/01/2008	10.720	0.80	2.40	0.050	1.92	0.10	0.22	LHS
126	09/01/2008	14.013	1.30	1.00	0.075	1.30	0.10	0.23	LHS
127	09/01/2008	14.020	1.00	1.20	0.075	1.20	0.09	0.21	LHS
128	09/01/2008	14.022	1.00	0.70	0.075	0.70	0.05	0.12	LHS
129	09/01/2008	15.230	1.60	1.30	0.025	2.08	0.05	0.12	LHS
130	09/01/2008	15.237	1.10	0.90	0.025	0.99	0.02	0.06	LHS
131	09/01/2008	15.260	1.30	0.70	0.075	0.91	0.07	0.16	LHS
132	09/01/2008	15.416	1.10	1.00	0.075	1.10	0.08	0.19	LHS
133	09/01/2008	16.240	1.30	0.60	0.075	0.78	0.06	0.14	LHS
134	09/01/2008	16.245	0.70	0.70	0.075	0.49	0.04	0.09	LHS
135	11/01/2008	15.320	1.20	1.00	0.075	1.20	0.09	0.21	RHS
136	11/01/2008	15.318	1.20	0.80	0.075	0.96	0.07	0.17	RHS
137	11/01/2008	15.295	0.60	1.00	0.075	0.60	0.05	0.10	RHS
138	11/01/2008	14.750	1.10	0.70	0.075	0.77	0.06	0.13	RHS
139	11/01/2008	14.050	1.80	1.10	0.075	1.98	0.15	0.34	RHS
140	11/01/2008	11.020	1.30	1.30	0.025	1.69	0.04	0.10	LHS
141	11/01/2008	11.034	1.60	1.10	0.025	1.76	0.04	0.10	LHS
142	11/01/2008	11.040	1.00	0.90	0.025	0.90	0.02	0.05	LHS
143	11/01/2008	11.046	1.30	0.90	0.025	1.17	0.03	0.07	LHS
144	11/01/2008	11.052	2.20	1.00	0.025	2.20	0.06	0.13	LHS
145	11/01/2008	11.060	1.30	0.80	0.025	1.04	0.03	0.06	LHS
146	11/01/2008	11.061	0.80	1.00	0.025	0.80	0.02	0.05	LHS
147	11/01/2008	11.080	2.40	1.10	0.025	2.64	0.07	0.15	LHS
148	11/01/2008	11.081	2.30	1.10	0.025	2.53	0.06	0.15	LHS
149	11/01/2008	11.082	1.20	0.90	0.025	1.08	0.03	0.06	LHS
150	11/01/2008	11.110	1.10	1.00	0.025	1.10	0.03	0.06	LHS
CARRIED FORWARD :						226.36	7.25	16.81	

BROUGHT FORWARD:			-	-	-	226.36	7.25	16.81	
151	11/01/2008	11.120	0.90	0.80	0.025	0.72	0.02	0.04	LHS
152	11/01/2008	11.130	1.80	1.00	0.025	1.80	0.05	0.10	LHS
153	11/01/2008	11.340	1.00	0.70	0.075	0.70	0.05	0.12	LHS
154	11/01/2008	11.370	1.20	0.80	0.075	0.96	0.07	0.17	LHS
155	11/01/2008	13.650	1.40	1.20	0.075	1.68	0.13	0.29	LHS
156	12/01/2008	16.320	3.00	0.80	0.075	2.40	0.18	0.42	RHS
157	12/01/2008	16.110	1.50	1.10	0.025	1.65	0.04	0.10	RHS
158	12/01/2008	14.420	1.70	0.80	0.025	1.36	0.03	0.08	RHS
159	12/01/2008	14.420	1.30	0.90	0.025	1.17	0.03	0.07	RHS
160	12/01/2008	14.350	1.00	0.70	0.025	0.70	0.02	0.04	RHS
161	12/01/2008	12.897	1.20	0.90	0.025	1.08	0.03	0.06	RHS
162	12/01/2008	12.890	1.00	0.90	0.025	0.90	0.02	0.05	RHS
163	12/01/2008	12.723	1.20	0.70	0.075	0.84	0.06	0.15	RHS
164	12/01/2008	12.720	1.70	1.10	0.075	1.87	0.14	0.33	RHS
165	12/01/2008	12.690	1.00	1.00	0.025	1.00	0.03	0.06	RHS
TOTAL :						245.19	8.14	18.89	

LINTASAN RESOURCES SDN. BHD.
MAINTENANCE OF FEDERAL ROADS - WEST COAST, SABAH
R01 POTHOLE PATCHING RECORD

DISTRICT: KOTA KINABALU

ROUTE NO. 606

ROAD NAME: JALAN SUSUR SEPANGAR BAY

MONTH: JANUARY 2008

ITEM	DATE	CHAINAGE	Length (m)	Width (m)	Depth (m)	AREA (m ²)	VOLUME (m ³)	PREMIX QUANTITY (ton)	REMARKS
BROUGHT FORWARD:			-	-	-	0.00	0.00	0.00	
1	04/01/2008	5.715	3.70	1.30	0.050	4.81	0.24	0.56	RHS
2	06/01/2008	5.680	2.80	3.20	0.075	8.96	0.67	1.56	RHS
3	06/01/2008	5.650	1.10	1.50	0.075	1.65	0.12	0.29	RHS
4	06/01/2008	5.650	0.60	1.10	0.075	0.66	0.05	0.11	RHS
5	06/01/2008	5.643	1.50	1.10	0.075	1.65	0.12	0.29	RHS
6	06/01/2008	5.643	1.70	1.60	0.075	2.72	0.20	0.47	RHS
7	06/01/2008	5.607	1.50	1.40	0.025	2.10	0.05	0.12	RHS
8	06/01/2008	5.580	2.00	1.40	0.025	2.80	0.07	0.16	RHS
9	07/01/2008	5.600	1.40	1.70	0.075	2.38	0.18	0.41	RHS
10	07/01/2008	5.600	1.70	1.20	0.075	2.04	0.15	0.35	RHS
11	07/01/2008	5.550	3.50	0.70	0.075	2.45	0.18	0.43	RHS
12	07/01/2008	5.549	1.60	1.30	0.075	2.08	0.16	0.36	RHS
13	07/01/2008	5.549	0.70	1.00	0.075	0.70	0.05	0.12	RHS
14	07/01/2008	5.520	0.80	0.80	0.075	0.64	0.05	0.11	RHS
15	07/01/2008	5.496	2.30	1.70	0.075	3.91	0.29	0.68	RHS
16	07/01/2008	5.496	0.70	1.40	0.075	0.98	0.07	0.17	RHS
17	08/01/2008	5.510	1.60	1.30	0.075	2.08	0.16	0.36	RHS
18	08/01/2008	5.510	0.90	0.70	0.075	0.63	0.05	0.11	RHS
19	08/01/2008	5.480	0.80	1.20	0.075	0.96	0.07	0.17	RHS
20	08/01/2008	5.480	3.40	1.50	0.075	5.10	0.38	0.89	RHS
21	08/01/2008	5.450	1.20	1.30	0.075	1.56	0.12	0.27	RHS
22	08/01/2008	5.625	1.30	1.30	0.075	1.69	0.13	0.29	LHS
23	09/01/2008	0.040	5.40	1.70	0.025	9.18	0.23	0.53	LHS
24	09/01/2008	5.520	3.00	1.70	0.075	5.10	0.38	0.89	LHS
25	09/01/2008	8.510	2.70	1.00	0.025	2.70	0.07	0.16	LHS
26	09/01/2008	8.580	1.00	0.80	0.025	0.80	0.02	0.05	RHS
27	11/01/2008	5.250	1.30	1.80	0.050	2.34	0.12	0.27	RHS
28	11/01/2008	5.210	1.00	3.10	0.050	3.10	0.16	0.36	RHS
29	11/01/2008	5.210	1.00	1.80	0.075	1.80	0.14	0.31	LHS
30	14/01/2007	5.593	3.30	3.30	0.070	10.89	0.76	1.77	RHS
CARRIED FORWARD :						88.46	5.44	12.63	

BROUGHT FORWARD:			-	-	-	88.46	5.44	12.63	
31	14/01/2008	5.540	2.30	1.40	0.050	3.22	0.16	0.37	RHS
32	15/01/2008	5.514	4.30	3.70	0.050	15.91	0.80	1.85	RHS
33	15/01/2008	5.518	4.70	3.50	0.050	16.45	0.82	1.91	RHS
34	15/01/2008	5.500	9.60	1.60	0.050	15.36	0.77	1.78	RHS
35	15/01/2008	5.491	5.20	3.20	0.050	16.64	0.83	1.93	RHS
36	15/01/2008	5.486	1.50	1.20	0.050	1.80	0.09	0.21	RHS
37	15/01/2008	5.478	2.20	1.90	0.050	4.18	0.21	0.48	RHS
38	15/01/2008	5.476	2.00	1.70	0.030	3.40	0.10	0.24	RHS
39	15/01/2008	5.460	5.20	1.50	0.070	7.80	0.55	1.27	RHS
40	16/01/2008	4.477	0.50	0.30	0.050	0.15	0.01	0.02	RHS
41	16/01/2008	5.713	2.90	1.00	0.025	2.90	0.07	0.17	LHS
42	16/01/2008	5.718	2.30	0.80	0.025	1.84	0.05	0.11	LHS
43	16/01/2008	5.721	4.20	1.00	0.025	4.20	0.11	0.24	LHS
44	16/01/2008	5.695	2.10	0.80	0.025	1.68	0.04	0.10	LHS
45	16/01/2008	5.696	4.00	1.20	0.025	4.80	0.12	0.28	LHS
46	16/01/2008	5.700	2.30	0.80	0.025	1.84	0.05	0.11	LHS
47	16/01/2008	5.700	1.30	1.00	0.025	1.30	0.03	0.08	LHS
48	16/01/2008	5.703	1.80	1.70	0.025	3.06	0.08	0.18	LHS
49	16/01/2008	5.704	1.30	1.70	0.025	2.21	0.06	0.13	LHS
50	16/01/2008	5.683	7.50	1.00	0.025	7.50	0.19	0.44	LHS
51	20/01/2008	5.207	14.20	0.20	0.025	2.84	0.07	0.16	LHS
52	20/01/2008	5.210	2.10	1.20	0.025	2.52	0.06	0.15	LHS
53	20/01/2008	5.640	1.70	1.20	0.075	2.04	0.15	0.35	RHS
54	20/01/2008	5.635	3.20	1.10	0.075	3.52	0.26	0.61	RHS
55	20/01/2008	5.240	16.00	0.20	0.025	3.20	0.08	0.19	RHS
56	20/01/2008	5.207	1.00	3.80	0.025	3.80	0.10	0.22	RHS
57	20/01/2008	5.207	4.10	0.20	0.025	0.82	0.02	0.05	RHS
58	21/01/2008	5.395	0.90	0.80	0.025	0.72	0.02	0.04	LHS
59	21/01/2008	5.400	1.20	0.90	0.025	1.08	0.03	0.06	LHS
60	21/01/2008	5.400	1.10	1.00	0.025	1.10	0.03	0.06	LHS
TOTAL :						226.34	11.38	26.40	

LINTASAN RESOURCES SDN. BHD.
MAINTENANCE OF FEDERAL ROADS - WEST COAST, SABAH
R01 POT HOLE PATCHING RECORD

DISTRICT: TUARAN

ROUTE NO. 01

ROAD NAME: JALAN KOTA KINABALU - KUDAT

MONTH: JANUARY 2008

ITEM	DATE	CHAINAGE	Length (m)	Width (m)	Depth (m)	AREA (m2)	VOLUME (m3)	PREMIX QUANTITY (ton)	REMARKS
BROUGHT FORWARD:			-	-	-	0.00	0.00	0.00	
1	08/01/2008	32.915	7.30	1.10	0.025	8.03	0.20	0.47	LHS
2	08/01/2008	32.917	6.10	1.20	0.025	7.32	0.18	0.42	LHS
3	08/01/2008	32.919	6.30	1.10	0.025	6.93	0.17	0.40	LHS
4	08/01/2008	32.920	10.50	1.20	0.025	12.60	0.32	0.73	LHS
5	09/01/2008	36.595	1.20	1.20	0.075	1.44	0.11	0.25	LHS
6	09/01/2008	36.525	1.30	1.10	0.075	1.43	0.11	0.25	RHS
7	09/01/2008	35.130	1.50	1.10	0.075	1.65	0.12	0.29	RHS
8	09/01/2008	35.130	1.60	1.50	0.075	2.40	0.18	0.42	RHS
9	09/01/2008	34.980	0.50	0.80	0.075	0.40	0.03	0.07	RHS
10	09/01/2008	34.980	1.20	1.10	0.075	1.32	0.10	0.23	RHS
11	11/01/2008	33.384	2.70	1.00	0.100	2.70	0.27	0.63	RHS
12	11/01/2008	33.200	1.60	0.80	0.050	1.28	0.06	0.15	RHS
13	12/01/2008	31.975	2.30	0.90	0.050	2.07	0.10	0.24	RHS
14	12/01/2008	31.978	2.30	0.90	0.050	2.07	0.10	0.24	RHS
15	12/01/2008	31.542	1.60	1.10	0.050	1.76	0.09	0.20	RHS
16	12/01/2008	31.540	1.50	1.10	0.050	1.65	0.08	0.19	RHS
17	12/01/2008	31.200	1.50	0.70	0.050	1.05	0.05	0.12	RHS
18	12/01/2008	31.212	1.60	1.00	0.050	1.60	0.08	0.19	RHS
19	12/01/2008	31.155	3.10	1.10	0.025	3.41	0.09	0.20	RHS
20	12/01/2008	30.753	1.30	1.00	0.050	1.30	0.07	0.15	RHS
21	12/01/2008	30.758	1.90	1.30	0.050	2.47	0.12	0.29	RHS
22	13/01/2008	30.681	1.90	1.30	0.050	2.47	0.12	0.29	RHS
23	13/01/2008	30.680	1.30	0.90	0.050	1.17	0.06	0.14	RHS
24	13/01/2008	30.600	2.10	1.20	0.070	2.52	0.18	0.41	RHS
25	13/01/2008	30.600	1.50	1.40	0.050	2.10	0.11	0.24	RHS
26	13/01/2008	31.948	1.60	1.30	0.050	2.08	0.10	0.24	LHS
27	13/01/2008	31.949	1.30	0.90	0.050	1.17	0.06	0.14	LHS
28	13/01/2008	31.964	3.20	2.80	0.025	8.96	0.22	0.52	LHS
29	13/01/2008	31.978	1.00	1.00	0.025	1.00	0.03	0.06	LHS
30	16/01/2008	34.760	1.70	1.00	0.075	1.70	0.13	0.30	RHS
CARRIED FORWARD :						88.05	3.64	8.45	

BROUGHT FORWARD:			-	-	-	88.05	3.64	8.45	
31	16/01/2008	34.500	2.30	0.90	0.075	2.07	0.16	0.36	RHS
32	16/01/2008	32.750	1.90	1.30	0.075	2.47	0.19	0.43	RHS
33	16/01/2008	32.750	1.00	0.80	0.075	0.80	0.06	0.14	RHS
34	22/01/2008	35.215	5.00	0.90	0.025	4.50	0.11	0.26	RHS
35	22/01/2008	35.215	3.60	0.90	0.025	3.24	0.08	0.19	RHS
36	22/01/2008	35.205	3.20	1.00	0.025	3.20	0.08	0.19	RHS
37	22/01/2008	35.180	1.10	1.10	0.025	1.21	0.03	0.07	RHS
38	22/01/2008	35.180	0.90	1.90	0.025	1.71	0.04	0.10	RHS
39	22/01/2008	35.179	1.00	0.90	0.025	0.90	0.02	0.05	RHS
40	22/01/2008	33.490	3.10	1.30	0.075	4.03	0.30	0.70	RHS
41	22/01/2008	33.340	1.20	0.70	0.075	0.84	0.06	0.15	RHS
42	22/01/2008	33.330	1.10	0.70	0.075	0.77	0.06	0.13	RHS
43	22/01/2008	33.150	1.60	0.90	0.075	1.44	0.11	0.25	RHS
44	22/01/2008	33.150	2.00	0.90	0.075	1.80	0.14	0.31	RHS
45	23/01/2008	32.909	1.70	1.20	0.025	2.04	0.05	0.12	RHS
46	23/01/2008	32.908	1.50	0.90	0.025	1.35	0.03	0.08	RHS
47	23/01/2008	32.900	2.00	1.00	0.025	2.00	0.05	0.12	RHS
48	23/01/2008	32.840	1.80	0.90	0.075	1.62	0.12	0.28	RHS
49	23/01/2008	32.838	1.50	1.10	0.025	1.65	0.04	0.10	RHS
50	23/01/2008	32.835	1.20	1.00	0.025	1.20	0.03	0.07	RHS
51	23/01/2008	32.685	2.00	0.90	0.025	1.80	0.05	0.10	RHS
52	23/01/2008	30.450	1.20	0.90	0.075	1.08	0.08	0.19	RHS
53	23/01/2008	30.435	2.80	1.00	0.025	2.80	0.07	0.16	RHS
54	23/01/2008	30.410	1.10	1.10	0.075	1.21	0.09	0.21	RHS
55	23/01/2008	30.410	0.60	0.80	0.075	0.48	0.04	0.08	RHS
TOTAL :						134.26	5.73	13.28	

LINTASAN RESOURCES SDN. BHD.
MAINTENANCE OF FEDERAL ROADS - WEST COAST, SABAH
R01 POTHOLE PATCHING RECORD

DISTRICT: TUARAN

ROUTE NO. 22

ROAD NAME: JALAN KOTA KINABALU - SANDAKAN

MONTH: JANUARY 2008

ITEM	DATE	CHAINAGE	Length (m)	Width (m)	Depth (m)	AREA (m2)	VOLUME (m3)	PREMIX QUANTITY (ton)	REMARKS
BROUGHT FORWARD:			-	-	-	0.00	0.00	0.00	
1	08/01/2008	9.097	2.50	2.10	0.070	5.25	0.37	0.85	LHS
2	10/01/2008	3.810	2.90	3.50	0.050	10.15	0.51	1.18	LHS
3	10/01/2008	3.810	3.00	1.20	0.025	3.60	0.09	0.21	LHS
4	10/01/2008	4.990	1.60	1.50	0.075	2.40	0.18	0.42	LHS
5	10/01/2008	20.390	3.70	1.20	0.025	4.44	0.11	0.26	LHS
6	10/01/2008	20.390	1.10	0.90	0.025	0.99	0.02	0.06	LHS
7	10/01/2008	20.400	1.80	1.50	0.075	2.70	0.20	0.47	LHS
8	10/01/2008	20.425	2.20	1.20	0.075	2.64	0.20	0.46	LHS
9	11/01/2008	5.100	0.80	0.80	0.075	0.64	0.05	0.11	LHS
10	11/01/2008	5.100	1.90	1.30	0.075	2.47	0.19	0.43	LHS
11	11/01/2008	5.100	1.80	1.50	0.075	2.70	0.20	0.47	LHS
12	11/01/2008	5.190	3.00	0.90	0.025	2.70	0.07	0.16	LHS
13	11/01/2008	5.250	1.30	0.70	0.075	0.91	0.07	0.16	LHS
14	11/01/2008	12.290	4.10	1.50	0.050	6.15	0.31	0.71	LHS
15	11/01/2008	6.520	7.00	1.00	0.025	7.00	0.18	0.41	RHS
16	11/01/2008	6.520	1.70	0.70	0.025	1.19	0.03	0.07	RHS
17	13/01/2008	21.785	1.90	1.00	0.075	1.90	0.14	0.33	RHS
18	13/01/2008	21.785	1.00	0.60	0.075	0.60	0.05	0.10	RHS
19	13/01/2008	21.762	1.70	0.60	0.075	1.02	0.08	0.18	RHS
20	13/01/2008	21.760	3.30	1.00	0.075	3.30	0.25	0.57	RHS
21	13/01/2008	21.758	0.90	0.70	0.075	0.63	0.05	0.11	RHS
22	13/01/2008	16.070	2.50	1.90	0.075	4.75	0.36	0.83	RHS
23	13/01/2008	16.070	0.50	0.90	0.075	0.45	0.03	0.08	RHS
24	14/01/2008	19.010	1.80	1.10	0.075	1.98	0.15	0.34	LHS
25	14/01/2008	20.390	6.00	1.20	0.025	7.20	0.18	0.42	LHS
26	14/01/2008	26.550	2.90	1.50	0.025	4.35	0.11	0.25	LHS
27	14/01/2008	26.550	1.70	1.40	0.025	2.38	0.06	0.14	LHS
28	14/01/2008	26.600	2.20	1.10	0.050	2.42	0.12	0.28	LHS
29	14/01/2008	29.885	4.70	0.70	0.075	3.29	0.25	0.57	LHS
30	14/01/2008	15.670	2.80	1.10	0.025	3.08	0.08	0.18	RHS
CARRIED FORWARD :						93.28	4.66	10.80	

BROUGHT FORWARD:			-	-	-	93.28	4.66	10.80	
31	14/01/2008	15.610	3.60	1.40	0.050	5.04	0.25	0.58	RHS
32	15/01/2008	9.090	0.50	1.20	0.075	0.60	0.05	0.10	LHS
33	15/01/2008	9.090	2.10	1.70	0.075	3.57	0.27	0.62	LHS
34	15/01/2008	15.210	2.20	1.00	0.025	2.20	0.06	0.13	LHS
35	15/01/2008	15.220	1.60	1.10	0.025	1.76	0.04	0.10	LHS
36	15/01/2008	15.221	1.10	0.90	0.025	0.99	0.02	0.06	LHS
37	15/01/2008	15.225	0.90	1.10	0.025	0.99	0.02	0.06	LHS
38	15/01/2008	15.812	1.00	1.00	0.025	1.00	0.03	0.06	LHS
39	15/01/2008	19.390	2.40	0.70	0.025	0.70	0.02	0.04	LHS
40	15/01/2008	20.115	3.10	0.80	0.025	1.92	0.05	0.11	LHS
41	15/01/2008	27.560	4.60	0.90	0.025	2.79	0.07	0.16	LHS
42	15/01/2008	32.486	1.70	1.10	0.050	5.06	0.25	0.59	LHS
43	16/01/2008	8.750	1.40	1.80	0.075	3.06	0.23	0.53	LHS
44	17/01/2008	9.360	2.90	1.10	0.050	1.54	0.08	0.18	LHS
45	17/01/2008	39.515	1.20	1.40	0.075	4.06	0.30	0.71	LHS
46	17/01/2008	9.085	7.30	1.50	0.025	1.80	0.05	0.10	RHS
47	17/01/2008	9.085	3.60	0.80	0.025	5.84	0.15	0.34	RHS
48	18/01/2008	21.830	0.90	1.00	0.075	3.60	0.27	0.63	LHS
49	18/01/2008	22.831	2.10	0.80	0.075	0.72	0.05	0.13	LHS
50	18/01/2008	32.500	5.80	0.80	0.025	1.68	0.04	0.10	LHS
51	18/01/2008	32.500	2.80	1.30	0.025	7.54	0.19	0.44	LHS
52	18/01/2008	32.550	2.30	1.30	0.025	3.64	0.09	0.21	LHS
53	18/01/2008	22.450	1.90	0.70	0.025	1.61	0.04	0.09	RHS
54	19/01/2008	34.350	2.10	1.10	0.075	2.09	0.16	0.36	LHS
55	19/01/2008	34.350	1.60	1.50	0.075	3.15	0.24	0.55	LHS
56	19/01/2008	9.380	1.20	0.90	0.075	1.44	0.11	0.25	RHS
57	19/01/2008	9.380	0.60	1.40	0.075	1.68	0.13	0.29	RHS
58	19/01/2008	3.760	1.90	0.60	0.075	0.36	0.03	0.06	RHS
TOTAL:						163.71	7.92	18.38	

LINTASAN RESOURCES SDN. BHD.
 MAINTENANCE OF FEDERAL ROADS - WEST COAST, SABAH
R01 POTHOLE PATCHING RECORD

DISTRICT: TUARAN

ROUTE NO. 503

ROAD NAME: JALAN BERUNGIS - KOTA BELUD

MONTH: JANUARY 2008

ITEM	DATE	CHAINAGE	Length (m)	Width (m)	Depth (m)	AREA (m2)	VOLUME (m3)	PREMIX QUANTITY (ton)	REMARKS
BROUGHT FORWARD:			-	-	-	0.00	0.00	0.00	
1	06/01/2008	1.618	0.90	0.80	0.075	0.72	0.05	0.13	RHS
2	06/01/2008	1.420	1.70	0.80	0.025	1.36	0.03	0.08	RHS
3	06/01/2008	1.415	0.90	0.70	0.025	0.63	0.02	0.04	RHS
4	06/01/2008	1.405	1.00	0.70	0.075	0.70	0.05	0.12	RHS
5	06/01/2008	1.397	2.00	1.00	0.075	2.00	0.15	0.35	RHS
6	06/01/2008	1.390	1.10	0.80	0.075	0.88	0.07	0.15	RHS
7	06/01/2008	1.275	3.00	1.10	0.025	3.30	0.08	0.19	RHS
8	06/01/2008	1.270	2.90	1.10	0.025	3.19	0.08	0.19	RHS
9	06/01/2008	1.265	2.50	0.80	0.025	2.00	0.05	0.12	RHS
10	06/01/2008	1.255	1.10	0.70	0.075	0.77	0.06	0.13	RHS
11	06/01/2008	0.670	2.50	0.80	0.025	2.00	0.05	0.12	RHS
TOTAL :						17.55	0.69	1.61	

LINTASAN RESOURCES SDN BHD.
 MAINTENANCE OF FEDERAL ROADS - WEST COAST, SABAH

SUMMARY - POTHOLE PATCHING RECORD

Month: January 2008

ITEM	DISTRICT	ROUTE NO.	ROAD NAME	AREA (m ²)			VOLUME (m ³)			PREMIX QUANTITY (TON)		
				PREVIOUS MONTH	CURRENT MONTH	CUM. MONTH	PREVIOUS MONTH	CURRENT MONTH	CUM. MONTH	PREVIOUS MONTH	CURRENT MONTH	CUM. MONTH
1	Kota Kinabalu	01	Jalan Kota Kinabalu - Sindumin	-	5.31	5.31	-	0.27	0.27	-	0.62	0.62
2	Penampang	01	Jalan Kota Kinabalu - Sindumin	-	100.22	100.22	-	5.01	5.01	-	11.63	11.63
3	Papar	01	Jalan Kota Kinabalu - Sindumin	-	338.91	338.91	-	16.95	16.95	-	39.31	39.31
4	Penampang	500	Jalan Kota Kinabalu - Keningau - Tenom	-	111.14	111.14	-	5.56	5.56	-	12.89	12.89
5	Penampang	501	Jalan Kota Kinabalu - Penampang - Lok Kawi	-	40.16	40.16	-	2.01	2.01	-	4.66	4.66
6	Kota Kinabalu	608	Jalan masuk ke Lapangan Terbang Lama, K.K.	-	-	-	-	-	-	-	-	-
TOTAL:				-	595.74	595.74	-	29.80	29.80	-	69.11	69.11

LINTASAN RESOURCES SDN. BHD.
 MAINTENANCE OF FEDERAL ROADS - WEST COAST, SABAH
R01 POTHOLE PATCHING RECORD

DISTRICT: KOTA KINABALU

ROUTE NO. 01

ROAD NAME: JALAN KK - SINDUMIN

MONTH: JANUARY 2008

ITEM	DATE	CHAINAGE	Length (m)	Width (m)	Depth (m)	AREA (m ²)	VOLUME (m ³)	PREMIX QUANTITY (ton)	REMARKS
BROUGHT FORWARD:						0.00	0.00	0.00	
1	1/5/2008	2.312	1.20	0.80	0.050	0.96	0.05	0.11	RHS
2	1/5/2008	2.313	1.20	0.70	0.050	0.84	0.04	0.10	RHS
3	1/5/2008	2.250	0.90	0.50	0.050	0.45	0.02	0.05	RHS
4	1/5/2008	0.670	1.10	0.50	0.050	0.55	0.03	0.06	RHS
5	1/5/2008	0.540	1.20	0.50	0.050	0.60	0.03	0.07	RHS
6	1/5/2008	0.730	1.10	0.40	0.050	0.44	0.02	0.05	LHS
7	1/5/2008	0.830	0.70	0.50	0.050	0.35	0.02	0.04	LHS
8	1/5/2008	1.480	1.60	0.70	0.050	1.12	0.06	0.13	LHS
TOTAL:						5.31	0.27	0.62	

LINTASAN RESOURCES SDN. BHD.
MAINTENANCE OF FEDERAL ROADS - WEST COAST, SABAH
R01 POTHOLE PATCHING RECORD

DISTRICT: PENAMPANG

ROUTE NO. 01

ROAD NAME: JALAN KK - SINDUMIN

MONTH: JANUARY 2008

ITEM	DATE	CHAINAGE	Length (m)	Width (m)	Depth (m)	AREA (m2)	VOLUME (m3)	PREMIX QUANTITY (ton)	REMARKS
BROUGHT FORWARD:						0.00	0.00	0.00	
1	1/1/2008	10.390	3.70	0.90	0.050	3.33	0.17	0.39	LHS
2	1/1/2008	10.422	4.70	0.90	0.050	4.23	0.21	0.49	LHS
3	1/1/2008	10.485	1.40	0.80	0.050	1.12	0.06	0.13	LHS
4	1/1/2008	10.487	0.80	0.60	0.050	0.48	0.02	0.06	LHS
5	1/1/2008	12.215	1.60	0.80	0.050	1.28	0.06	0.15	LHS
6	1/1/2008	12.217	1.60	1.50	0.050	2.40	0.12	0.28	LHS
7	1/1/2008	10.515	1.00	0.60	0.050	0.60	0.03	0.07	RHS
8	1/1/2008	17.740	2.60	1.30	0.050	3.38	0.17	0.39	LHS
9	1/2/2008	12.245	1.50	1.00	0.050	1.50	0.08	0.17	LHS
10	1/2/2008	12.255	1.90	1.00	0.050	1.90	0.10	0.22	LHS
11	1/2/2008	13.935	2.10	1.10	0.050	2.31	0.12	0.27	LHS
12	1/2/2008	14.155	2.90	1.00	0.050	2.90	0.15	0.34	LHS
13	1/2/2008	14.055	2.30	1.10	0.050	2.53	0.13	0.29	LHS
14	1/2/2008	14.150	2.30	1.10	0.050	2.53	0.13	0.29	LHS
15	1/2/2008	14.150	2.90	1.00	0.050	2.90	0.15	0.34	LHS
16	1/2/2008	14.275	1.50	1.10	0.050	1.65	0.08	0.19	LHS
17	1/2/2008	14.365	2.70	0.70	0.050	1.89	0.09	0.22	LHS
18	1/2/2008	14.940	1.80	1.00	0.050	1.80	0.09	0.21	LHS
19	1/2/2008	15.025	1.80	1.00	0.050	1.80	0.09	0.21	LHS
20	1/2/2008	15.075	1.60	1.20	0.050	1.92	0.10	0.22	LHS
21	1/2/2008	15.285	1.10	0.60	0.050	0.66	0.03	0.08	LHS
22	1/2/2008	15.355	1.10	0.90	0.050	0.99	0.05	0.11	LHS
23	1/2/2008	15.475	2.00	1.00	0.050	2.00	0.10	0.23	LHS
24	1/2/2008	15.470	2.50	1.00	0.050	2.50	0.13	0.29	LHS
25	1/2/2008	15.315	1.30	0.80	0.050	1.04	0.05	0.12	RHS
26	1/2/2008	14.805	1.00	0.90	0.050	0.90	0.05	0.10	RHS
27	1/4/2008	9.015	1.30	1.10	0.050	1.43	0.07	0.17	LHS
28	1/4/2008	9.025	1.50	0.70	0.050	1.05	0.05	0.12	LHS
29	1/4/2008	9.040	1.00	0.80	0.050	0.80	0.04	0.09	LHS
30	1/4/2008	9.185	0.50	0.50	0.050	0.25	0.01	0.03	LHS
CARRIED FORWARD:						54.07	2.70	6.27	

LINTASAN RESOURCES SDN. BHD.
MAINTENANCE OF FEDERAL ROADS - WEST COAST, SABAH
R01 POTHOLE PATCHING RECORD

DISTRICT: PENAMPANG

ROUTE NO. 01

ROAD NAME: JALAN KK - SINDUMIN

MONTH: JANUARY 2008

ITEM	DATE	CHAINAGE	Length (m)	Width (m)	Depth (m)	AREA (m2)	VOLUME (m3)	PREMIX QUANTITY (ton)	REMARKS
BROUGHT FORWARD:						0.00	0.00	0.00	
1	1/1/2008	10.390	3.70	0.90	0.050	3.33	0.17	0.39	LHS
2	1/1/2008	10.422	4.70	0.90	0.050	4.23	0.21	0.49	LHS
3	1/1/2008	10.485	1.40	0.80	0.050	1.12	0.06	0.13	LHS
4	1/1/2008	10.487	0.80	0.60	0.050	0.48	0.02	0.06	LHS
5	1/1/2008	12.215	1.60	0.80	0.050	1.28	0.06	0.15	LHS
6	1/1/2008	12.217	1.60	1.50	0.050	2.40	0.12	0.28	LHS
7	1/1/2008	10.515	1.00	0.60	0.050	0.60	0.03	0.07	RHS
8	1/1/2008	17.740	2.60	1.30	0.050	3.38	0.17	0.39	LHS
9	1/2/2008	12.245	1.50	1.00	0.050	1.50	0.08	0.17	LHS
10	1/2/2008	12.255	1.90	1.00	0.050	1.90	0.10	0.22	LHS
11	1/2/2008	13.935	2.10	1.10	0.050	2.31	0.12	0.27	LHS
12	1/2/2008	14.155	2.90	1.00	0.050	2.90	0.15	0.34	LHS
13	1/2/2008	14.055	2.30	1.10	0.050	2.53	0.13	0.29	LHS
14	1/2/2008	14.150	2.30	1.10	0.050	2.53	0.13	0.29	LHS
15	1/2/2008	14.150	2.90	1.00	0.050	2.90	0.15	0.34	LHS
16	1/2/2008	14.275	1.50	1.10	0.050	1.65	0.08	0.19	LHS
17	1/2/2008	14.365	2.70	0.70	0.050	1.89	0.09	0.22	LHS
18	1/2/2008	14.940	1.80	1.00	0.050	1.80	0.09	0.21	LHS
19	1/2/2008	15.025	1.80	1.00	0.050	1.80	0.09	0.21	LHS
20	1/2/2008	15.075	1.60	1.20	0.050	1.92	0.10	0.22	LHS
21	1/2/2008	15.285	1.10	0.60	0.050	0.66	0.03	0.08	LHS
22	1/2/2008	15.355	1.10	0.90	0.050	0.99	0.05	0.11	LHS
23	1/2/2008	15.475	2.00	1.00	0.050	2.00	0.10	0.23	LHS
24	1/2/2008	15.470	2.50	1.00	0.050	2.50	0.13	0.29	LHS
25	1/2/2008	15.315	1.30	0.80	0.050	1.04	0.05	0.12	RHS
26	1/2/2008	14.805	1.00	0.90	0.050	0.90	0.05	0.10	RHS
27	1/4/2008	9.015	1.30	1.10	0.050	1.43	0.07	0.17	LHS
28	1/4/2008	9.025	1.50	0.70	0.050	1.05	0.05	0.12	LHS
29	1/4/2008	9.040	1.00	0.80	0.050	0.80	0.04	0.09	LHS
30	1/4/2008	9.185	0.50	0.50	0.050	0.25	0.01	0.03	LHS
CARRIED FORWARD:						54.07	2.70	6.27	

LINTASAN RESOURCES SDN. BHD.
MAINTENANCE OF FEDERAL ROADS - WEST COAST, SABAH
R01 POT HOLE PATCHING RECORD

DISTRICT: PENAMPANG

ROUTE NO. 01

ROAD NAME: JALAN KK - SINDUMIN

MONTH: JANUARY 2008

ITEM	DATE	CHAINAGE	Length (m)	Width (m)	Depth (m)	AREA (m2)	VOLUME (m3)	PREMIX QUANTITY (ton)	REMARKS
BROUGHT FORWARD:						54.07	2.70	6.27	
31	1/4/2008	9.248	0.80	0.60	0.050	0.48	0.02	0.06	LHS
32	1/4/2008	10.185	1.50	0.90	0.050	1.35	0.07	0.16	LHS
33	1/4/2008	10.186	1.90	1.10	0.050	2.09	0.10	0.24	LHS
34	1/4/2008	10.187	1.60	1.50	0.050	2.40	0.12	0.28	LHS
35	1/4/2008	10.188	0.90	0.80	0.050	0.72	0.04	0.08	LHS
36	1/4/2008	10.385	1.90	0.70	0.050	1.33	0.07	0.15	LHS
37	1/4/2008	13.695	1.70	1.30	0.050	2.21	0.11	0.26	RHS
38	1/4/2008	12.385	1.60	1.20	0.050	1.92	0.10	0.22	RHS
39	1/4/2008	11.935	5.00	1.30	0.050	6.50	0.33	0.75	RHS
40	1/4/2008	11.375	2.30	0.90	0.050	2.07	0.10	0.24	RHS
41	1/4/2008	9.585	2.30	0.70	0.050	1.61	0.08	0.19	RHS
42	1/4/2008	9.585	2.40	1.00	0.050	2.40	0.12	0.28	RHS
43	1/4/2008	9.575	1.60	0.90	0.050	1.44	0.07	0.17	RHS
44	1/5/2008	16.555	1.90	1.70	0.050	3.23	0.16	0.37	RHS
45	1/5/2008	17.785	1.70	1.10	0.050	1.87	0.09	0.22	LHS
46	1/5/2008	17.815	1.90	0.80	0.050	1.52	0.08	0.18	LHS
47	1/5/2008	17.875	2.00	0.90	0.050	1.80	0.09	0.21	RHS
48	1/5/2008	17.895	2.00	1.10	0.050	2.20	0.11	0.26	RHS
49	1/20/2008	11.845	1.00	0.60	0.050	0.60	0.03	0.07	RHS
50	1/20/2008	10.830	0.90	0.40	0.050	0.36	0.02	0.04	RHS
51	1/20/2008	9.665	0.70	0.50	0.050	0.35	0.02	0.04	RHS
52	1/20/2008	9.655	1.50	0.50	0.050	0.75	0.04	0.09	RHS
53	1/20/2008	9.640	1.50	0.70	0.050	1.05	0.05	0.12	RHS
54	1/20/2008	9.630	1.70	0.60	0.050	1.02	0.05	0.12	RHS
55	1/20/2008	9.435	0.60	0.50	0.050	0.30	0.02	0.03	RHS
56	1/20/2008	9.135	1.60	0.70	0.050	1.12	0.06	0.13	RHS
57	1/20/2008	7.135	1.40	0.80	0.050	1.12	0.06	0.13	RHS
58	1/20/2008	7.050	0.70	0.60	0.050	0.42	0.02	0.05	RHS
59	1/20/2008	7.049	0.60	0.60	0.050	0.36	0.02	0.04	RHS
60	1/20/2008	7.015	0.80	0.60	0.050	0.48	0.02	0.06	RHS
61	1/20/2008	6.965	1.80	0.60	0.050	1.08	0.05	0.13	LHS
TOTAL:						100.22	5.01	11.63	

LINTASAN RESOURCES SDN. BHD.
MAINTENANCE OF FEDERAL ROADS - WEST COAST, SABAH
R01 POTHOLE PATCHING RECORD

DISTRICT: PAPAR

ROUTE NO. 01

ROAD NAME: JALAN KK - SINDUMIN

MONTH: JANUARY 2008

ITEM	DATE	CHAINAGE	Length (m)	Width (m)	Depth (m)	AREA (m2)	VOLUME (m3)	PREMIX QUANTITY (ton)	REMARKS
BROUGHT FORWARD:						0.00	0.00	0.00	
1	1/1/2008	25.835	3.90	1.60	0.050	6.24	0.31	0.72	RHS
2	1/1/2008	27.185	1.60	1.00	0.050	1.60	0.08	0.19	RHS
3	1/1/2008	27.188	2.10	1.50	0.050	3.15	0.16	0.37	RHS
4	1/1/2008	27.196	1.90	1.60	0.050	3.04	0.15	0.35	RHS
5	1/1/2008	29.715	1.90	1.50	0.050	2.85	0.14	0.33	LHS
6	1/1/2008	30.685	1.70	1.60	0.050	2.72	0.14	0.32	RHS
7	1/1/2008	31.685	2.20	1.30	0.050	2.86	0.14	0.33	LHS
8	1/1/2008	31.835	3.70	1.40	0.050	5.18	0.26	0.60	RHS
9	1/3/2008	66.545	2.10	1.10	0.050	2.31	0.12	0.27	LHS
10	1/3/2008	40.460	2.10	1.00	0.050	2.10	0.11	0.24	RHS
11	1/3/2008	40.465	1.80	1.20	0.050	2.16	0.11	0.25	RHS
12	1/3/2008	40.468	1.80	1.30	0.050	2.34	0.12	0.27	RHS
13	1/3/2008	40.470	2.80	1.10	0.050	3.08	0.15	0.36	RHS
14	1/3/2008	41.665	1.60	1.60	0.050	2.56	0.13	0.30	LHS
15	1/3/2008	41.365	2.70	1.20	0.050	3.24	0.16	0.38	LHS
16	1/6/2008	41.430	1.50	0.80	0.050	1.20	0.06	0.14	LHS
17	1/6/2008	41.415	0.90	0.50	0.050	0.45	0.02	0.05	RHS
18	1/6/2008	41.414	1.50	0.80	0.050	1.20	0.06	0.14	RHS
19	1/6/2008	41.410	1.90	1.20	0.050	2.28	0.11	0.26	RHS
20	1/6/2008	41.409	1.50	1.00	0.050	1.50	0.08	0.17	RHS
21	1/6/2008	41.407	1.30	0.80	0.050	1.04	0.05	0.12	RHS
22	1/6/2008	41.405	1.30	1.00	0.050	1.30	0.07	0.15	RHS
23	1/6/2008	41.365	1.40	0.90	0.050	1.26	0.06	0.15	RHS
24	1/6/2008	41.355	1.40	0.80	0.050	1.12	0.06	0.13	RHS
25	1/6/2008	41.325	1.40	1.00	0.050	1.40	0.07	0.16	LHS
26	1/6/2008	41.265	1.50	1.50	0.050	2.25	0.11	0.26	RHS
27	1/6/2008	41.263	1.10	0.80	0.050	0.88	0.04	0.10	RHS
28	1/6/2008	41.261	2.10	1.00	0.050	2.10	0.11	0.24	RHS
29	1/6/2008	41.255	2.90	1.90	0.050	5.51	0.28	0.64	RHS
30	1/7/2008	38.955	1.80	1.80	0.050	3.24	0.16	0.38	RHS
CARRIED FORWARD:						72.16	3.61	8.37	

LINTASAN RESOURCES SDN. BHD.
MAINTENANCE OF FEDERAL ROADS - WEST COAST, SABAH
R01 POTHOLE PATCHING RECORD

DISTRICT: PAPAR

ROUTE NO. 01

ROAD NAME: JALAN KK - SINDUMIN

MONTH: JANUARY 2008

ITEM	DATE	CHAINAGE	Length (m)	Width (m)	Depth (m)	AREA (m2)	VOLUME (m3)	PREMIX QUANTITY (ton)	REMARKS
BROUGHT FORWARD:						72.16	3.61	8.37	
31	1/7/2008	40.595	1.80	1.50	0.050	2.70	0.14	0.31	LHS
32	1/7/2008	40.592	1.40	1.00	0.050	1.40	0.07	0.16	LHS
33	1/7/2008	40.590	1.60	0.60	0.050	0.96	0.05	0.11	LHS
34	1/7/2008	40.585	1.90	1.10	0.050	2.09	0.10	0.24	LHS
35	1/7/2008	40.583	1.70	0.80	0.050	1.36	0.07	0.16	LHS
36	1/7/2008	40.582	1.40	0.70	0.050	0.98	0.05	0.11	LHS
37	1/7/2008	40.580	2.10	0.80	0.050	1.68	0.08	0.19	LHS
38	1/7/2008	40.560	1.40	0.80	0.050	1.12	0.06	0.13	LHS
39	1/7/2008	40.590	1.60	1.00	0.050	1.60	0.08	0.19	RHS
40	1/7/2008	40.580	2.50	1.10	0.050	2.75	0.14	0.32	RHS
41	1/7/2008	40.638	1.10	1.10	0.050	1.21	0.06	0.14	LHS
42	1/7/2008	40.639	0.60	0.50	0.050	0.30	0.02	0.03	LHS
43	1/7/2008	40.640	0.90	0.70	0.050	0.63	0.03	0.07	LHS
44	1/16/2008	40.327	1.40	0.60	0.050	0.84	0.04	0.10	RHS
45	1/16/2008	40.328	0.40	0.40	0.050	0.16	0.01	0.02	RHS
46	1/16/2008	40.330	0.80	0.80	0.050	0.64	0.03	0.07	LHS
47	1/16/2008	40.331	0.40	0.40	0.050	0.16	0.01	0.02	RHS
48	1/16/2008	40.332	0.40	0.40	0.050	0.16	0.01	0.02	RHS
49	1/16/2008	40.335	0.60	0.40	0.050	0.24	0.01	0.03	LHS
50	1/16/2008	40.337	0.80	0.60	0.050	0.48	0.02	0.06	LHS
51	1/16/2008	40.360	0.80	0.60	0.050	0.48	0.02	0.06	LHS
52	1/16/2008	40.363	0.80	0.80	0.050	0.64	0.03	0.07	LHS
53	1/16/2008	40.364	1.00	0.80	0.050	0.80	0.04	0.09	LHS
54	1/16/2008	40.367	0.80	0.40	0.050	0.32	0.02	0.04	LHS
55	1/16/2008	40.369	0.80	0.40	0.050	0.32	0.02	0.04	LHS
56	1/16/2008	40.370	0.80	0.40	0.050	0.32	0.02	0.04	LHS
57	1/16/2008	40.397	1.10	0.80	0.050	0.88	0.04	0.10	LHS
58	1/16/2008	40.403	0.80	0.60	0.050	0.48	0.02	0.06	LHS
59	1/16/2008	40.405	0.60	0.60	0.050	0.36	0.02	0.04	LHS
60	1/16/2008	40.417	0.60	0.40	0.050	0.24	0.01	0.03	LHS
CARRIED FORWARD:						98.46	4.92	11.42	

LINTASAN RESOURCES SDN. BHD.
MAINTENANCE OF FEDERAL ROADS - WEST COAST, SABAH
R01 POTHOLE PATCHING RECORD

DISTRICT: PAPAR

ROUTE NO. 01

ROAD NAME: JALAN KK - SINDUMIN

MONTH: JANUARY 2008

ITEM	DATE	CHAINAGE	Length (m)	Width (m)	Depth (m)	AREA (m2)	VOLUME (m3)	PREMIX QUANTITY (ton)	REMARKS
BROUGHT FORWARD:						98.46	4.92	11.42	
61	1/16/2008	40.421	0.40	0.40	0.050	0.16	0.01	0.02	LHS
62	1/16/2008	40.422	0.40	0.40	0.050	0.16	0.01	0.02	LHS
63	1/16/2008	40.429	1.00	0.60	0.050	0.60	0.03	0.07	LHS
64	1/16/2008	40.441	0.80	0.60	0.050	0.48	0.02	0.06	LHS
65	1/16/2008	40.445	0.60	0.40	0.050	0.24	0.01	0.03	LHS
66	1/16/2008	40.451	0.40	0.40	0.050	0.16	0.01	0.02	LHS
67	1/16/2008	40.453	0.60	0.60	0.050	0.36	0.02	0.04	LHS
68	1/16/2008	40.473	0.80	0.80	0.050	0.64	0.03	0.07	LHS
69	1/16/2008	40.475	1.20	0.60	0.050	0.72	0.04	0.08	LHS
70	1/16/2008	40.477	0.80	0.60	0.050	0.48	0.02	0.06	LHS
71	1/16/2008	40.493	0.80	0.60	0.050	0.48	0.02	0.06	LHS
72	1/16/2008	40.495	0.40	0.40	0.050	0.16	0.01	0.02	LHS
73	1/16/2008	40.497	0.40	0.40	0.050	0.16	0.01	0.02	LHS
74	1/16/2008	40.505	1.40	0.60	0.050	0.84	0.04	0.10	LHS
75	1/16/2008	40.507	1.00	0.60	0.050	0.60	0.03	0.07	LHS
76	1/16/2008	40.509	1.00	0.80	0.050	0.80	0.04	0.09	LHS
77	1/16/2008	40.510	0.40	0.40	0.050	0.16	0.01	0.02	LHS
78	1/16/2008	40.513	0.80	0.80	0.050	0.64	0.03	0.07	LHS
79	1/16/2008	40.514	0.40	0.40	0.050	0.16	0.01	0.02	LHS
80	1/16/2008	50.525	0.60	0.60	0.050	0.36	0.02	0.04	LHS
81	1/16/2008	50.529	1.00	0.80	0.050	0.80	0.04	0.09	LHS
82	1/16/2008	40.531	1.60	0.60	0.050	0.96	0.05	0.11	LHS
83	1/16/2008	40.532	0.60	0.40	0.050	0.24	0.01	0.03	LHS
84	1/16/2008	40.533	0.60	0.40	0.050	0.24	0.01	0.03	LHS
85	1/16/2008	40.525	1.20	0.60	0.050	0.72	0.04	0.08	RHS
86	1/16/2008	40.524	0.60	0.40	0.050	0.24	0.01	0.03	RHS
87	1/16/2008	40.521	0.60	0.60	0.050	0.36	0.02	0.04	RHS
88	1/16/2008	40.520	0.60	0.60	0.050	0.36	0.02	0.04	RHS
89	1/16/2008	40.517	0.80	0.60	0.050	0.48	0.02	0.06	RHS
90	1/16/2008	40.513	1.00	0.80	0.050	0.80	0.04	0.09	RHS
CARRIED FORWARD:						112.02	5.60	12.99	

LINTASAN RESOURCES SDN. BHD.
MAINTENANCE OF FEDERAL ROADS - WEST COAST, SABAH
R01 POTHOLE PATCHING RECORD

DISTRICT: PAPAR

ROUTE NO. 01

ROAD NAME: JALAN KK - SINDUMIN

MONTH: JANUARY 2008

ITEM	DATE	CHAINAGE	Length (m)	Width (m)	Depth (m)	AREA (m2)	VOLUME (m3)	PREMIX QUANTITY (ton)	REMARKS
BROUGHT FORWARD:						112.02	5.60	12.99	
91	1/16/2008	40.511	0.60	0.60	0.050	0.36	0.02	0.04	RHS
92	1/16/2008	40.509	0.60	0.40	0.050	0.24	0.01	0.03	RHS
93	1/16/2008	40.505	0.60	0.40	0.050	0.24	0.01	0.03	RHS
94	1/16/2008	40.503	0.80	0.60	0.050	0.48	0.02	0.06	RHS
95	1/16/2008	40.502	0.80	0.60	0.050	0.48	0.02	0.06	RHS
96	1/16/2008	40.499	0.80	0.60	0.050	0.48	0.02	0.06	RHS
97	1/16/2008	40.495	0.80	0.40	0.050	0.32	0.02	0.04	RHS
98	1/16/2008	40.233	0.40	0.40	0.050	0.16	0.01	0.02	LHS
99	1/16/2008	40.234	1.40	0.40	0.050	0.56	0.03	0.06	RHS
100	1/16/2008	40.235	0.80	0.60	0.050	0.48	0.02	0.06	LHS
101	1/16/2008	40.237	0.60	0.40	0.050	0.24	0.01	0.03	LHS
102	1/16/2008	40.255	1.00	0.80	0.050	0.80	0.04	0.09	RHS
103	1/16/2008	40.256	0.60	0.40	0.050	0.24	0.01	0.03	RHS
104	1/16/2008	40.257	1.00	0.60	0.050	0.60	0.03	0.07	RHS
105	1/16/2008	40.258	0.80	0.60	0.050	0.48	0.02	0.06	LHS
106	1/16/2008	40.259	1.00	0.80	0.050	0.80	0.04	0.09	LHS
107	1/16/2008	40.260	0.40	0.40	0.050	0.16	0.01	0.02	LHS
108	1/16/2008	40.261	0.60	0.40	0.050	0.24	0.01	0.03	LHS
109	1/16/2008	40.263	2.00	0.80	0.050	1.60	0.08	0.19	RHS
110	1/16/2008	40.264	0.80	0.80	0.050	0.64	0.03	0.07	RHS
111	1/16/2008	40.265	0.40	0.40	0.050	0.16	0.01	0.02	RHS
112	1/16/2008	40.267	0.40	0.40	0.050	0.16	0.01	0.02	RHS
113	1/16/2008	40.268	0.60	0.40	0.050	0.24	0.01	0.03	RHS
114	1/16/2008	40.269	0.60	0.60	0.050	0.36	0.02	0.04	RHS
115	1/16/2008	40.270	0.60	0.40	0.050	0.24	0.01	0.03	LHS
116	1/16/2008	40.271	0.60	0.60	0.050	0.36	0.02	0.04	LHS
117	1/16/2008	40.272	1.00	0.60	0.050	0.60	0.03	0.07	LHS
118	1/16/2008	40.277	0.60	0.40	0.050	0.24	0.01	0.03	LHS
119	1/16/2008	40.278	0.40	0.40	0.050	0.16	0.01	0.02	LHS
120	1/16/2008	40.281	0.40	0.40	0.050	0.16	0.01	0.02	LHS
CARRIED FORWARD:						124.30	6.22	14.42	

LINTASAN RESOURCES SDN. BHD.
MAINTENANCE OF FEDERAL ROADS - WEST COAST, SABAH
R01 POTHOLE PATCHING RECORD

DISTRICT: PAPAR

ROUTE NO. 01

ROAD NAME: JALAN KK - SINDUMIN

MONTH: JANUARY 2008

ITEM	DATE	CHAINAGE	Length (m)	Width (m)	Depth (m)	AREA (m2)	VOLUME (m3)	PREMIX QUANTITY (ton)	REMARKS
BROUGHT FORWARD:						124.30	6.22	14.42	
121	1/16/2008	40.321	0.40	0.40	0.050	0.16	0.01	0.02	RHS
122	1/16/2008	40.322	1.00	0.80	0.050	0.80	0.04	0.09	RHS
123	1/16/2008	40.324	0.40	0.40	0.050	0.16	0.01	0.02	RHS
124	1/16/2008	40.493	1.00	0.60	0.050	0.60	0.03	0.07	RHS
125	1/17/2008	36.545	2.00	1.40	0.050	2.80	0.14	0.32	LHS
126	1/17/2008	36.546	1.40	0.80	0.050	1.12	0.06	0.13	RHS
127	1/17/2008	36.515	1.40	0.80	0.050	1.12	0.06	0.13	LHS
128	1/17/2008	36.513	0.40	0.40	0.050	0.16	0.01	0.02	LHS
129	1/17/2008	36.495	1.20	0.60	0.050	0.72	0.04	0.08	LHS
130	1/17/2008	36.425	1.80	1.00	0.050	1.80	0.09	0.21	RHS
131	1/17/2008	36.225	1.80	0.60	0.050	1.08	0.05	0.13	RHS
132	1/17/2008	36.223	2.60	1.20	0.050	3.12	0.16	0.36	RHS
133	1/17/2008	35.833	1.00	0.80	0.050	0.80	0.04	0.09	RHS
134	1/17/2008	35.831	1.80	1.20	0.050	2.16	0.11	0.25	RHS
135	1/17/2008	35.737	1.60	1.22	0.050	1.95	0.10	0.23	RHS
136	1/17/2008	35.735	1.40	1.00	0.050	1.40	0.07	0.16	RHS
137	1/17/2008	35.453	1.40	0.80	0.050	1.12	0.06	0.13	RHS
138	1/17/2008	34.860	1.80	1.20	0.050	2.16	0.11	0.25	LHS
139	1/17/2008	34.859	1.00	1.00	0.050	1.00	0.05	0.12	LHS
140	1/17/2008	34.855	1.60	0.80	0.050	1.28	0.06	0.15	LHS
141	1/17/2008	34.853	1.20	0.60	0.050	0.72	0.04	0.08	LHS
142	1/18/2008	32.535	2.00	1.20	0.050	2.40	0.12	0.28	RHS
143	1/18/2008	32.540	1.20	1.10	0.050	1.32	0.07	0.15	RHS
144	1/18/2008	32.543	1.20	0.80	0.050	0.96	0.05	0.11	RHS
145	1/18/2008	32.545	2.00	1.00	0.050	2.00	0.10	0.23	RHS
146	1/18/2008	32.547	2.40	2.40	0.050	5.76	0.29	0.67	RHS
147	1/18/2008	32.635	1.40	1.00	0.050	1.40	0.07	0.16	RHS
148	1/18/2008	32.637	0.80	0.60	0.050	0.48	0.02	0.06	RHS
149	1/18/2008	34.845	2.00	1.00	0.050	2.00	0.10	0.23	LHS
150	1/18/2008	34.839	0.80	0.80	0.050	0.64	0.03	0.07	RHS
CARRIED FORWARD:						167.49	8.37	19.43	

LINTASAN RESOURCES SDN. BHD.
MAINTENANCE OF FEDERAL ROADS - WEST COAST, SABAH
R01 POTHOLE PATCHING RECORD

DISTRICT: PAPAR
ROUTE NO. 01
ROAD NAME: JALAN KK - SINDUMIN
MONTH: JANUARY 2008

ITEM	DATE	CHAINAGE	Length (m)	Width (m)	Depth (m)	AREA (m2)	VOLUME (m3)	PREMIX QUANTITY (ton)	REMARKS
BROUGHT FORWARD:						167.49	8.37	19.43	
151	1/18/2008	34.843	0.80	0.80	0.050	0.64	0.03	0.07	RHS
152	1/18/2008	34.844	1.40	1.00	0.050	1.40	0.07	0.16	RHS
153	1/18/2008	34.846	0.80	0.60	0.050	0.48	0.02	0.06	RHS
154	1/18/2008	34.847	1.10	0.80	0.050	0.88	0.04	0.10	RHS
155	1/18/2008	34.849	0.60	0.60	0.050	0.36	0.02	0.04	RHS
156	1/18/2008	34.827	3.00	1.00	0.050	3.00	0.15	0.35	RHS
157	1/18/2008	34.829	1.00	1.00	0.050	1.00	0.05	0.12	LHS
158	1/18/2008	34.831	3.20	1.10	0.050	3.52	0.18	0.41	LHS
159	1/21/2008	24.830	3.40	1.40	0.050	4.76	0.24	0.55	RHS
160	1/21/2008	25.065	2.50	1.10	0.050	2.75	0.14	0.32	RHS
161	1/21/2008	25.015	1.60	0.90	0.050	1.44	0.07	0.17	RHS
162	1/21/2008	25.005	1.60	1.00	0.050	1.60	0.08	0.19	RHS
163	1/21/2008	25.003	1.30	1.10	0.050	1.43	0.07	0.17	RHS
164	1/21/2008	25.004	0.70	0.70	0.050	0.49	0.02	0.06	RHS
165	1/21/2008	25.001	1.00	0.80	0.050	0.80	0.04	0.09	RHS
166	1/21/2008	25.002	1.60	0.60	0.050	0.96	0.05	0.11	RHS
167	1/21/2008	24.999	2.10	0.70	0.050	1.47	0.07	0.17	RHS
168	1/21/2008	24.995	1.90	0.90	0.050	1.71	0.09	0.20	RHS
169	1/21/2008	24.996	2.20	0.90	0.050	1.98	0.10	0.23	RHS
170	1/21/2008	25.605	2.80	1.30	0.050	3.64	0.18	0.42	RHS
171	1/21/2008	25.606	3.80	1.50	0.050	5.70	0.29	0.66	RHS
172	1/21/2008	24.885	1.00	0.80	0.050	0.80	0.04	0.09	RHS
173	1/21/2008	24.886	1.00	0.70	0.050	0.70	0.04	0.08	RHS
174	1/23/2008	41.135	2.60	1.40	0.050	3.64	0.18	0.42	RHS
175	1/23/2008	41.005	2.30	1.10	0.050	2.53	0.13	0.29	LHS
176	1/23/2008	41.000	1.00	0.90	0.050	0.90	0.05	0.10	LHS
177	1/23/2008	41.001	1.10	0.90	0.050	0.99	0.05	0.11	LHS
178	1/23/2008	40.994	2.10	1.30	0.050	2.73	0.14	0.32	RHS
179	1/23/2008	40.995	0.80	0.80	0.050	0.64	0.03	0.07	RHS
180	1/23/2008	40.996	1.20	0.90	0.050	1.08	0.05	0.13	RHS
CARRIED FORWARD:						221.51	11.08	25.70	

LINTASAN RESOURCES SDN. BHD.
MAINTENANCE OF FEDERAL ROADS - WEST COAST, SABAH
R01 POTHOLE PATCHING RECORD

DISTRICT: PAPAR
ROUTE NO. 01
ROAD NAME: JALAN KK - SINDUMIN
MONTH: JANUARY 2008

ITEM	DATE	CHAINAGE	Length (m)	Width (m)	Depth (m)	AREA (m ²)	VOLUME (m ³)	PREMIX QUANTITY (ton)	REMARKS
BROUGHT FORWARD:						221.51	11.08	25.70	
181	1/23/2008	40.685	1.50	1.20	0.050	1.80	0.09	0.21	LHS
182	1/23/2008	40.681	1.40	1.40	0.050	1.96	0.10	0.23	LHS
183	1/23/2008	40.680	1.50	1.20	0.050	1.80	0.09	0.21	LHS
184	1/23/2008	40.675	2.50	1.30	0.050	3.25	0.16	0.38	RHS
185	1/23/2008	40.676	2.80	1.50	0.050	4.20	0.21	0.49	RHS
186	1/23/2008	40.655	1.40	1.30	0.050	1.82	0.09	0.21	RHS
187	1/24/2008	24.065	2.40	1.30	0.050	3.12	0.16	0.36	LHS
188	1/24/2008	24.064	3.30	1.80	0.050	5.94	0.30	0.69	LHS
189	1/24/2008	24.050	1.60	1.30	0.050	2.08	0.10	0.24	RHS
190	1/24/2008	24.065	1.70	1.20	0.050	2.04	0.10	0.24	RHS
191	1/24/2008	24.665	1.40	1.10	0.050	1.54	0.08	0.18	RHS
192	1/24/2008	34.535	1.40	1.30	0.050	1.82	0.09	0.21	RHS
193	1/24/2008	34.560	1.60	1.30	0.050	2.08	0.10	0.24	RHS
194	1/24/2008	34.562	2.30	1.10	0.050	2.53	0.13	0.29	RHS
195	1/26/2008	43.565	2.50	1.80	0.050	4.50	0.23	0.52	RHS
196	1/26/2008	43.232	1.50	0.80	0.050	1.20	0.06	0.14	RHS
197	1/26/2008	42.685	1.40	0.90	0.050	1.26	0.06	0.15	RHS
198	1/26/2008	42.661	1.30	1.10	0.050	1.43	0.07	0.17	RHS
199	1/26/2008	42.660	1.40	1.30	0.050	1.82	0.09	0.21	RHS
200	1/26/2008	42.345	1.40	1.30	0.050	1.82	0.09	0.21	RHS
201	1/26/2008	42.290	3.10	1.20	0.050	3.72	0.19	0.43	RHS
202	1/26/2008	41.662	1.50	2.50	0.050	3.75	0.19	0.44	RHS
203	1/26/2008	41.395	2.10	1.10	0.050	2.31	0.12	0.27	RHS
204	1/27/2008	23.550	1.90	1.30	0.050	2.47	0.12	0.29	RHS
205	1/27/2008	23.142	2.60	1.20	0.050	3.12	0.16	0.36	RHS
206	1/27/2008	23.133	2.20	1.20	0.050	2.64	0.13	0.31	RHS
207	1/28/2008	62.665	1.80	1.70	0.050	3.06	0.15	0.35	LHS
208	1/28/2008	24.305	1.80	1.60	0.050	2.88	0.14	0.33	RHS
209	1/28/2008	24.035	2.00	1.80	0.050	3.60	0.18	0.42	RHS
210	1/28/2008	23.665	2.20	1.30	0.050	2.86	0.14	0.33	RHS
CARRIED FORWARD:						299.93	15.00	34.79	

LINTASAN RESOURCES SDN. BHD.
MAINTENANCE OF FEDERAL ROADS - WEST COAST, SABAH
R01 POTHOLE PATCHING RECORD

DISTRICT: PAPAR

ROUTE NO. 01

ROAD NAME: JALAN KK - SINDUMIN

MONTH: JANUARY 2008

ITEM	DATE	CHAINAGE	Length (m)	Width (m)	Depth (m)	AREA (m2)	VOLUME (m3)	PREMIX QUANTITY (ton)	REMARKS
BROUGHT FORWARD:						299.93	15.00	34.79	
211	1/28/2008	23.410	1.40	1.00	0.050	1.40	0.07	0.16	RHS
212	1/28/2008	23.360	1.80	1.50	0.050	2.70	0.14	0.31	RHS
213	1/28/2008	22.980	1.80	1.60	0.050	2.88	0.14	0.33	LHS
214	1/29/2008	19.335	2.10	1.10	0.050	2.31	0.12	0.27	LHS
215	1/29/2008	19.336	0.70	0.60	0.050	0.42	0.02	0.05	LHS
216	1/29/2008	19.445	2.70	1.00	0.050	2.70	0.14	0.31	LHS
217	1/29/2008	19.765	2.00	1.00	0.050	2.00	0.10	0.23	RHS
218	1/29/2008	20.438	1.20	1.10	0.050	1.32	0.07	0.15	LHS
219	1/29/2008	20.515	1.60	1.10	0.050	1.76	0.09	0.20	LHS
220	1/29/2008	20.595	2.00	1.30	0.050	2.60	0.13	0.30	LHS
221	1/29/2008	20.960	1.00	0.80	0.050	0.80	0.04	0.09	RHS
222	1/29/2008	20.995	1.30	1.00	0.050	1.30	0.07	0.15	RHS
223	1/29/2008	21.845	1.50	1.20	0.050	1.80	0.09	0.21	RHS
224	1/29/2008	21.844	2.10	1.30	0.050	2.73	0.14	0.32	RHS
225	1/29/2008	21.865	1.90	1.20	0.050	2.28	0.11	0.26	RHS
226	1/29/2008	21.965	0.80	0.70	0.050	0.56	0.03	0.06	RHS
227	1/29/2008	21.966	1.20	0.90	0.050	1.08	0.05	0.13	RHS
228	1/29/2008	22.015	2.40	1.40	0.050	3.36	0.17	0.39	RHS
229	1/29/2008	22.030	3.00	1.30	0.050	3.90	0.20	0.45	RHS
230	1/29/2008	22.735	1.20	0.90	0.050	1.08	0.05	0.13	RHS
TOTAL:						338.91	16.95	39.31	

LINTASAN RESOURCES SDN. BHD.
MAINTENANCE OF FEDERAL ROADS - WEST COAST, SABAH
R01 POTHOLE PATCHING RECORD

DISTRICT: PENAMPANG

ROUTE NO. 500

ROAD NAME: JALAN KK - KENINGAU - TENOM

MONTH: JANUARY 2008

ITEM	DATE	CHAINAGE	Length (m)	Width (m)	Depth (m)	AREA (m2)	VOLUME (m3)	PREMIX QUANTITY (ton)	REMARKS
BROUGHT FORWARD:						0.00	0.00	0.00	
1	1/2/2008	19.720	1.00	0.80	0.050	0.80	0.04	0.09	RHS
2	1/2/2008	20.000	1.00	0.60	0.050	0.60	0.03	0.07	RHS
3	1/2/2008	20.048	1.00	0.40	0.050	0.40	0.02	0.05	RHS
4	1/2/2008	25.876	0.60	0.60	0.050	0.36	0.02	0.04	RHS
5	1/2/2008	25.879	1.00	0.60	0.050	0.60	0.03	0.07	RHS
6	1/2/2008	25.880	0.80	0.80	0.050	0.64	0.03	0.07	RHS
7	1/2/2008	28.890	0.40	0.40	0.050	0.16	0.01	0.02	RHS
8	1/2/2008	28.892	0.80	0.60	0.050	0.48	0.02	0.06	RHS
9	1/2/2008	28.895	1.40	0.60	0.050	0.84	0.04	0.10	RHS
10	1/2/2008	28.896	0.60	0.40	0.050	0.24	0.01	0.03	RHS
11	1/2/2008	28.897	0.60	0.60	0.050	0.36	0.02	0.04	RHS
12	1/2/2008	28.900	0.40	0.40	0.050	0.16	0.01	0.02	RHS
13	1/2/2008	32.686	16.60	0.60	0.050	9.96	0.50	1.16	LHS
14	1/2/2008	32.700	16.80	0.60	0.050	10.08	0.50	1.17	LHS
15	1/2/2008	41.590	1.20	0.60	0.050	0.72	0.04	0.08	LHS
16	1/2/2008	31.592	0.60	0.60	0.050	0.36	0.02	0.04	LHS
17	1/3/2008	19.990	1.60	0.40	0.050	0.64	0.03	0.07	LHS
18	1/3/2008	19.992	1.00	0.80	0.050	0.80	0.04	0.09	RHS
19	1/3/2008	19.300	1.20	0.80	0.050	0.96	0.05	0.11	LHS
20	1/3/2008	21.194	2.00	0.40	0.050	0.80	0.04	0.09	LHS
21	1/3/2008	21.196	2.60	0.60	0.050	1.56	0.08	0.18	LHS
22	1/3/2008	21.776	1.10	0.80	0.050	0.88	0.04	0.10	RHS
23	1/3/2008	21.778	0.40	0.40	0.050	0.16	0.01	0.02	RHS
24	1/3/2008	21.779	1.00	0.60	0.050	0.60	0.03	0.07	RHS
25	1/3/2008	22.200	17.20	0.30	0.050	5.16	0.26	0.60	LHS
26	1/3/2008	24.220	1.80	0.80	0.050	1.44	0.07	0.17	RHS
27	1/4/2008	34.610	3.60	1.20	0.050	4.32	0.22	0.50	LHS
28	1/4/2008	34.612	3.60	1.20	0.050	4.32	0.22	0.50	RHS
29	1/4/2008	34.620	3.60	1.20	0.050	4.32	0.22	0.50	LHS
30	1/4/2008	34.622	3.60	1.20	0.050	4.32	0.22	0.50	RHS
CARRIED FORWARD:						57.04	2.85	6.62	

LINTASAN RESOURCES SDN. BHD.
MAINTENANCE OF FEDERAL ROADS - WEST COAST, SABAH
R01 POTHOLE PATCHING RECORD

DISTRICT: PENAMPANG
ROUTE NO. 500
ROAD NAME: JALAN KK - KENINGAU - TENOM
MONTH: JANUARY 2008

ITEM	DATE	CHAINAGE	Length (m)	Width (m)	Depth (m)	AREA (m ²)	VOLUME (m ³)	PREMIX QUANTITY (ton)	REMARKS
BROUGHT FORWARD:						57.04	2.85	6.62	
31	1/4/2008	36.690	3.60	1.20	0.050	4.32	0.22	0.50	LHS
32	1/4/2008	36.692	3.60	1.20	0.050	4.32	0.22	0.50	RHS
33	1/4/2008	37.280	2.00	0.60	0.050	1.20	0.06	0.14	LHS
34	1/4/2008	40.020	1.80	1.00	0.050	1.80	0.09	0.21	RHS
35	1/4/2008	40.021	1.40	1.00	0.050	1.40	0.07	0.16	RHS
36	1/4/2008	40.022	1.60	1.00	0.050	1.60	0.08	0.19	RHS
37	1/4/2008	40.023	1.20	1.00	0.050	1.20	0.06	0.14	RHS
38	1/4/2008	40.025	1.00	0.80	0.050	0.80	0.04	0.09	RHS
39	22/01/2008	21.784	0.80	0.80	0.050	0.64	0.03	0.07	RHS
40	22/01/2008	21.786	1.00	0.80	0.050	0.80	0.04	0.09	RHS
41	22/01/2008	21.787	0.60	0.60	0.050	0.36	0.02	0.04	RHS
42	22/01/2008	21.788	1.00	0.80	0.050	0.80	0.04	0.09	RHS
43	22/01/2008	21.790	0.40	0.40	0.050	0.16	0.01	0.02	RHS
44	22/01/2008	21.818	4.20	0.60	0.050	2.52	0.13	0.29	RHS
45	22/01/2008	21.820	0.80	0.60	0.050	0.48	0.02	0.06	RHS
46	22/01/2008	19.925	1.20	0.60	0.050	0.72	0.04	0.08	RHS
47	22/01/2008	19.930	0.40	0.40	0.050	0.16	0.01	0.02	RHS
48	22/01/2008	19.950	1.00	0.80	0.050	0.80	0.04	0.09	LHS
49	22/01/2008	19.962	0.80	0.40	0.050	0.32	0.02	0.04	RHS
50	22/01/2008	19.978	1.20	1.00	0.050	1.20	0.06	0.14	RHS
51	22/01/2008	19.979	2.00	1.00	0.050	2.00	0.10	0.23	RHS
52	22/01/2008	19.980	1.80	1.00	0.050	1.80	0.09	0.21	RHS
53	22/01/2008	19.982	0.60	0.60	0.050	0.36	0.02	0.04	LHS
54	22/01/2008	19.983	0.60	0.40	0.050	0.24	0.01	0.03	LHS
55	23/01/2008	26.008	2.00	0.80	0.050	1.60	0.08	0.19	RHS
56	23/01/2008	26.014	0.80	0.60	0.050	0.48	0.02	0.06	RHS
57	23/01/2008	26.016	2.00	0.80	0.050	1.60	0.08	0.19	LHS
58	23/01/2008	26.020	1.00	0.60	0.050	0.60	0.03	0.07	LHS
59	23/01/2008	26.038	1.60	0.60	0.050	0.96	0.05	0.11	RHS
60	23/01/2008	26.040	2.00	0.60	0.050	1.20	0.06	0.14	RHS
CARRIED FORWARD:						93.48	4.67	10.84	

LINTASAN RESOURCES SDN. BHD.
MAINTENANCE OF FEDERAL ROADS - WEST COAST, SABAH
R01 POT HOLE PATCHING RECORD

DISTRICT: PENAMPANG

ROUTE NO. 500

ROAD NAME: JALAN KK - KENINGAU - TENOM

MONTH: JANUARY 2008

ITEM	DATE	CHAINAGE	Length (m)	Width (m)	Depth (m)	AREA (m2)	VOLUME (m3)	PREMIX QUANTITY (ton)	REMARKS
BROUGHT FORWARD:						93.48	4.67	10.84	
61	23/01/2008	26.300	1.20	1.00	0.050	1.20	0.06	0.14	RHS
62	23/01/2008	26.302	1.00	0.80	0.050	0.80	0.04	0.09	LHS
63	23/01/2008	26.304	1.00	0.80	0.050	0.80	0.04	0.09	LHS
64	23/01/2008	26.312	1.10	1.00	0.050	1.10	0.06	0.13	RHS
65	23/01/2008	26.313	1.00	1.00	0.050	1.00	0.05	0.12	RHS
66	23/01/2008	26.314	0.80	0.40	0.050	0.32	0.02	0.04	RHS
67	23/01/2008	26.328	0.80	0.80	0.050	0.64	0.03	0.07	RHS
68	23/01/2008	26.330	0.80	0.80	0.050	0.64	0.03	0.07	RHS
69	1/24/2008	19.296	1.00	0.60	0.050	0.60	0.03	0.07	LHS
70	1/24/2008	19.296	1.00	0.80	0.050	0.80	0.04	0.09	RHS
71	1/24/2008	19.298	3.00	0.80	0.050	2.40	0.12	0.28	RHS
72	1/24/2008	19.299	1.10	0.80	0.050	0.88	0.04	0.10	LHS
73	1/24/2008	19.299	1.40	1.00	0.050	1.40	0.07	0.16	RHS
74	1/24/2008	19.300	1.00	0.60	0.050	0.60	0.03	0.07	LHS
75	1/24/2008	19.301	0.80	0.40	0.050	0.32	0.02	0.04	LHS
76	1/24/2008	19.302	1.00	0.60	0.050	0.60	0.03	0.07	LHS
77	1/24/2008	19.303	2.00	0.40	0.050	0.80	0.04	0.09	LHS
78	1/24/2008	19.305	1.00	0.80	0.050	0.80	0.04	0.09	LHS
79	1/24/2008	25.422	1.00	1.00	0.050	1.00	0.05	0.12	RHS
80	1/24/2008	35.720	1.20	0.80	0.050	0.96	0.05	0.11	RHS
TOTAL:						111.14	5.56	12.89	

LINTASAN RESOURCES SDN. BHD.
MAINTENANCE OF FEDERAL ROADS - WEST COAST, SABAH
R01 POTHOLE PATCHING RECORD

DISTRICT: PENAMPANG

ROUTE NO. 501

ROAD NAME: JALAN KK - PENAMPANG - LOKKAWI

MONTH: JANUARY 2008

ITEM	DATE	CHAINAGE	Length (m)	Width (m)	Depth (m)	AREA (m2)	VOLUME (m3)	PREMIX QUANTITY (ton)	REMARKS
BROUGHT FORWARD:						0.00	0.00	0.00	
1	1/14/2008	7.275	1.20	1.00	0.050	1.20	0.06	0.14	LHS
2	1/14/2008	7.339	1.00	0.80	0.050	0.80	0.04	0.09	LHS
3	1/14/2008	10.769	1.00	0.40	0.050	0.40	0.02	0.05	LHS
4	1/14/2008	10.771	0.80	0.40	0.050	0.32	0.02	0.04	LHS
5	1/14/2008	10.774	1.40	1.00	0.050	1.40	0.07	0.16	LHS
6	1/14/2008	10.775	1.60	1.20	0.050	1.92	0.10	0.22	LHS
7	1/14/2008	10.777	0.40	0.40	0.050	0.16	0.01	0.02	LHS
8	1/14/2008	10.779	1.40	0.80	0.050	1.12	0.06	0.13	LHS
9	1/14/2008	10.781	1.00	0.60	0.050	0.60	0.03	0.07	LHS
10	1/14/2008	10.785	1.60	1.00	0.050	1.60	0.08	0.19	LHS
11	1/14/2008	12.859	0.80	0.80	0.050	0.64	0.03	0.07	LHS
12	1/14/2008	12.861	0.80	0.60	0.050	0.48	0.02	0.06	LHS
13	1/14/2008	13.336	1.40	0.10	0.050	0.14	0.01	0.02	RHS
14	1/14/2008	13.827	1.20	0.80	0.050	0.96	0.05	0.11	RHS
15	1/14/2008	13.839	0.80	0.80	0.050	0.64	0.03	0.07	RHS
16	1/14/2008	13.841	1.00	1.00	0.050	1.00	0.05	0.12	LHS
17	1/14/2008	14.251	0.80	0.80	0.050	0.64	0.03	0.07	RHS
18	1/14/2008	14.253	0.80	0.60	0.050	0.48	0.02	0.06	RHS
19	1/14/2008	14.297	1.20	1.00	0.050	1.20	0.06	0.14	RHS
20	1/14/2008	16.459	0.80	0.60	0.050	0.48	0.02	0.06	LHS
21	1/14/2008	16.469	0.80	0.60	0.050	0.48	0.02	0.06	RHS
22	1/14/2008	16.559	0.80	0.80	0.050	0.64	0.03	0.07	RHS
23	1/14/2008	16.566	0.80	0.60	0.050	0.48	0.02	0.06	RHS
24	1/15/2008	9.869	1.40	0.80	0.050	1.12	0.06	0.13	RHS
25	1/15/2008	9.878	0.60	0.60	0.050	0.36	0.02	0.04	RHS
26	1/15/2008	9.883	1.10	1.00	0.050	1.10	0.06	0.13	RHS
27	1/15/2008	9.885	1.20	0.80	0.050	0.96	0.05	0.11	RHS
28	1/15/2008	14.149	2.00	0.80	0.050	1.60	0.08	0.19	RHS
29	1/15/2008	15.183	1.00	0.60	0.050	0.60	0.03	0.07	RHS
30	1/15/2008	15.189	0.80	0.60	0.050	0.48	0.02	0.06	RHS
CARRIED FORWARD:						24.00	1.20	2.78	

LINTASAN RESOURCES SDN. BHD.
MAINTENANCE OF FEDERAL ROADS - WEST COAST, SABAH
R01 POT HOLE PATCHING RECORD

DISTRICT: PENAMPANG

ROUTE NO. 501

ROAD NAME: JALAN KK - PENAMPANG - LOKKAWI

MONTH: JANUARY 2008

ITEM	DATE	CHAINAGE	Length (m)	Width (m)	Depth (m)	AREA (m ²)	VOLUME (m ³)	PREMIX QUANTITY (ton)	REMARKS
BROUGHT FORWARD:						24.00	1.20	2.78	
31	1/15/2008	15.191	1.10	0.80	0.050	0.88	0.04	0.10	RHS
32	1/15/2008	15.197	1.00	0.60	0.050	0.60	0.03	0.07	RHS
33	1/15/2008	15.199	0.80	0.60	0.050	0.48	0.02	0.06	RHS
34	1/15/2008	15.423	0.60	0.40	0.050	0.24	0.01	0.03	RHS
35	1/15/2008	15.425	0.40	0.40	0.050	0.16	0.01	0.02	RHS
36	1/15/2008	15.429	0.80	0.60	0.050	0.48	0.02	0.06	RHS
37	1/15/2008	15.433	1.00	0.80	0.050	0.80	0.04	0.09	RHS
38	1/15/2008	15.437	2.00	0.80	0.050	1.60	0.08	0.19	LHS
39	1/15/2008	15.439	2.00	0.80	0.050	1.60	0.08	0.19	LHS
40	1/15/2008	15.441	0.80	0.60	0.050	0.48	0.02	0.06	RHS
41	1/15/2008	15.443	2.00	0.60	0.050	1.20	0.06	0.14	RHS
42	1/15/2008	15.445	1.40	0.80	0.050	1.12	0.06	0.13	RHS
43	1/15/2008	15.545	0.40	0.40	0.050	0.16	0.01	0.02	RHS
44	1/15/2008	15.549	1.20	1.00	0.050	1.20	0.06	0.14	RHS
45	1/15/2008	15.555	1.20	1.10	0.050	1.32	0.07	0.15	RHS
46	1/15/2008	15.739	1.60	1.00	0.050	1.60	0.08	0.19	RHS
47	1/15/2008	15.749	1.20	0.60	0.050	0.72	0.04	0.08	RHS
48	1/19/2008	3.261	0.80	0.80	0.050	0.64	0.03	0.07	LHS
49	1/19/2008	3.738	0.80	0.60	0.050	0.48	0.02	0.06	LHS
50	1/19/2008	3.739	0.60	0.40	0.050	0.24	0.01	0.03	LHS
51	1/19/2008	3.740	0.40	0.40	0.050	0.16	0.01	0.02	LHS
TOTAL:						40.16	2.01	4.66	

LINTASAN RESOURCES SDN. BHD.
MAINTENANCE OF FEDERAL ROADS - WEST COAST, SABAH

R01 POTHOLE PATCHING RECORD

DISTRICT: KOTA BELUD

ROUTE NO. 01

ROAD NAME: JALAN KOTA KINABALU - KUDAT

MONTH: JANUARY 2008

ITEM	DATE	CHAINAGE	Length (m)	Width (m)	Depth (m)	AREA (m2)	VOLUME (m3)	PREMIX QUANTITY (ton)	REMARKS
BROUGHT FORWARD:			-	-	-				
1	02/01/2008	105.780	0.70	0.70	0.05	0.49	0.02	0.06	ULU KUKUT
2	02/01/2008	105.781	1.00	1.00	0.05	1.00	0.05	0.12	
3	02/01/2008	105.800	1.00	1.00	0.05	1.00	0.05	0.12	
4	02/01/2008	105.880	1.00	1.00	0.05	1.00	0.05	0.12	
5	02/01/2008	105.881	1.00	1.00	0.05	1.00	0.05	0.12	
6	02/01/2008	105.882	1.00	1.00	0.05	1.00	0.05	0.12	
7	02/01/2008	105.883	1.00	0.70	0.05	0.70	0.04	0.08	
8	02/01/2008	105.884	1.00	0.80	0.05	0.80	0.04	0.09	
9	03/01/2008	105.980	0.80	0.80	0.05	0.64	0.03	0.07	
10	03/01/2008	105.981	0.70	0.70	0.05	0.49	0.02	0.06	
11	03/01/2008	105.982	1.00	1.00	0.05	1.00	0.05	0.12	
12	03/01/2008	105.983	1.00	1.00	0.05	1.00	0.05	0.12	
13	03/01/2008	105.984	1.00	0.80	0.05	0.80	0.04	0.09	
14	03/01/2008	105.985	1.00	1.00	0.05	1.00	0.05	0.12	
15	05/01/2008	106.080	0.70	0.70	0.05	0.49	0.02	0.06	
16	05/01/2008	106.081	0.70	0.60	0.05	0.42	0.02	0.05	
17	05/01/2008	106.082	1.00	0.90	0.05	0.90	0.05	0.10	
18	05/01/2008	106.083	0.90	0.60	0.05	0.54	0.03	0.06	
19	05/01/2008	106.084	1.00	0.80	0.05	0.80	0.04	0.09	
20	05/01/2008	106.085	0.90	0.90	0.05	0.81	0.04	0.09	
21	05/01/2008	106.070	1.00	1.00	0.05	1.00	0.05	0.12	
22	07/01/2008	106.180	1.00	0.70	0.05	0.70	0.04	0.08	
23	07/01/2008	106.181	1.00	0.95	0.05	0.95	0.05	0.11	
24	07/01/2008	106.182	0.70	0.70	0.05	0.49	0.02	0.06	
25	07/01/2008	106.183	1.00	0.90	0.05	0.90	0.05	0.10	
26	07/01/2008	106.280	0.90	0.90	0.05	0.81	0.04	0.09	
27	07/01/2008	106.281	1.00	0.95	0.05	0.95	0.05	0.11	
28	07/01/2008	106.282	0.80	0.80	0.05	0.64	0.03	0.07	
29	07/01/2008	106.283	0.70	0.70	0.05	0.49	0.02	0.06	
30	08/01/2008	106.290	0.70	0.70	0.05	0.49	0.02	0.06	
CARRIED FORWARD:						23.30	1.17	2.70	

LINTASAN RESOURCES SDN BHD.
 MAINTENANCE OF FEDERAL ROADS - WEST COAST, SABAH

SUMMARY - POTHOLE PATCHING RECORD

MONTH : JANUARY 2008

ITEM	DISTRICT	ROUTE NO.	ROAD NAME	AREA (m ²)			VOLUME (m ³)			PREMIX QUANTITY (TON)		
				PREVIOUS MONTH	CURRENT MONTH	CUM. MONTH	PREVIOUS MONTH	CURRENT MONTH	CUM. MONTH	PREVIOUS MONTH	CURRENT MONTH	CUM. MONTH
1	Kota Belud	01	Jalan Kota Kinabalu - Kudat.	-	74.57	74.57	-	3.73	3.73	-	8.65	8.65
2	Kota Marudu	01	Jalan Kota Kinabalu - Kudat	-	9.52	9.52	-	0.48	0.48	-	1.10	1.10
3	Kudat	01	Jalan Kota Kinabalu - Kudat	-	113.56	113.56	-	5.68	5.68	-	13.17	13.17
TOTAL:				-	197.65	197.65	-	9.89	9.89	-	22.92	22.92

LINTASAN RESOURCES SDN. BHD.
MAINTENANCE OF FEDERAL ROADS - WEST COAST, SABAH
R01 POTHOLE PATCHING RECORD

DISTRICT: KOTA BELUD

ROUTE NO. 01

ROAD NAME: JALAN KOTA KINABALU - KUDAT

MONTH: JANUARY 2008

ITEM	DATE	CHAINAGE	Length (m)	Width (m)	Depth (m)	AREA (m2)	VOLUME (m3)	PREMIX QUANTITY (ton)	REMARKS
BROUGHT FORWARD:			-	-	-	23.30	1.17	2.70	
31	02/01/2008	106.291	0.50	0.50	0.05	0.25	0.01	0.03	
32	02/01/2008	106.292	1.00	0.95	0.05	0.95	0.05	0.11	
33	02/01/2008	106.293	0.70	0.80	0.05	0.56	0.03	0.06	
34	02/01/2008	106.294	1.00	0.85	0.05	0.85	0.04	0.10	
35	02/01/2008	106.295	1.00	0.60	0.05	0.60	0.03	0.07	
36	02/01/2008	106.300	1.00	0.95	0.05	0.95	0.05	0.11	
37	02/01/2008	106.310	1.00	1.00	0.05	1.00	0.05	0.12	
38	02/01/2008	106.311	0.60	0.60	0.05	0.36	0.02	0.04	
39	03/01/2008	103.080	0.80	0.70	0.05	0.56	0.03	0.06	MANTANAU
40	03/01/2008	103.081	0.90	0.90	0.05	0.81	0.04	0.09	
41	03/01/2008	103.580	1.00	0.95	0.05	0.95	0.05	0.11	
42	03/01/2008	103.582	1.00	1.00	0.05	1.00	0.05	0.12	
43	03/01/2008	103.583	0.65	0.40	0.05	0.26	0.01	0.03	
44	03/01/2008	103.584	0.80	0.60	0.05	0.48	0.02	0.06	
45	05/01/2008	105.580	0.70	0.70	0.05	0.49	0.02	0.06	ULU KUKUT
46	05/01/2008	105.581	0.90	0.90	0.05	0.81	0.04	0.09	
47	05/01/2008	105.582	0.90	0.90	0.05	0.81	0.04	0.09	
48	05/01/2008	105.582	0.70	0.70	0.05	0.49	0.02	0.06	
49	05/01/2008	107.550	0.90	0.90	0.05	0.81	0.04	0.09	
50	05/01/2008	107.551	0.70	0.70	0.05	0.49	0.02	0.06	
51	05/01/2008	107.552	0.90	0.90	0.05	0.81	0.04	0.09	
52	07/01/2008	107.600	0.80	0.80	0.05	0.64	0.03	0.07	
53	07/01/2008	107.610	1.00	1.00	0.05	1.00	0.05	0.12	
54	07/01/2008	107.880	0.80	0.80	0.05	0.64	0.03	0.07	
55	07/01/2008	107.881	1.00	1.00	0.05	1.00	0.05	0.12	
56	07/01/2008	107.882	0.80	0.80	0.05	0.64	0.03	0.07	
57	07/01/2008	167.883	0.90	0.90	0.05	0.81	0.04	0.09	
58	07/01/2008	107.884	0.70	0.70	0.05	0.49	0.02	0.06	
59	07/01/2008	107.890	0.70	0.70	0.05	0.49	0.02	0.06	
60	08/01/2008	107.891	0.80	0.80	0.05	0.64	0.03	0.07	
CARRIED FORWARD:						43.94	2.20	5.10	

LINTASAN RESOURCES SDN. BHD.
MAINTENANCE OF FEDERAL ROADS - WEST COAST, SABAH
R01 POTHOLE PATCHING RECORD

DISTRICT: KOTA BELUD

ROUTE NO. 01

ROAD NAME: JALAN KOTA KINABALU - KUDAT

MONTH: JANUARY 2008

ITEM	DATE	CHAINAGE	Length (m)	Width (m)	Depth (m)	AREA (m ²)	VOLUME (m ³)	PREMIX QUANTITY (ton)	REMARKS
BROUGHT FORWARD:			-	-	-	43.94	2.20	5.10	
61	15/01/2008	107.892	0.90	0.80	0.05	0.72	0.04	0.08	
62	15/01/2008	107.893	0.80	0.80	0.05	0.64	0.03	0.07	
63	15/01/2008	107.874	0.70	0.70	0.05	0.49	0.02	0.06	
64	15/01/2008	107.875	0.90	0.90	0.05	0.81	0.04	0.09	
65	15/01/2008	107.980	0.95	1.00	0.05	0.95	0.05	0.11	
66	15/01/2008	107.981	0.90	0.80	0.05	0.72	0.04	0.08	
67	15/01/2008	107.982	1.00	0.70	0.05	0.70	0.04	0.08	
68	15/01/2008	107.983	0.80	0.70	0.05	0.56	0.03	0.06	
69	15/01/2008	107.984	1.00	0.60	0.05	0.60	0.03	0.07	
70	17/01/2008	108.080	0.90	0.70	0.05	0.63	0.03	0.07	
71	17/01/2008	108.081	1.00	0.80	0.05	0.80	0.04	0.09	
72	17/01/2008	108.082	1.00	0.70	0.05	0.70	0.04	0.08	
73	17/01/2008	108.083	0.60	0.60	0.05	0.36	0.02	0.04	
74	17/01/2008	108.084	1.00	0.75	0.05	0.75	0.04	0.09	
75	17/01/2008	108.085	0.90	0.70	0.05	0.63	0.03	0.07	
76	17/01/2008	108.180	1.00	0.60	0.05	0.60	0.03	0.07	
77	17/01/2008	108.181	0.80	0.80	0.05	0.64	0.03	0.07	
78	17/01/2008	108.182	1.00	1.00	0.05	1.00	0.05	0.12	
79	17/01/2008	108.183	1.00	1.00	0.05	1.00	0.05	0.12	
80	17/01/2008	108.180	0.70	0.70	0.05	0.49	0.02	0.06	
81	21/01/2008	108.540	1.00	0.85	0.05	0.85	0.04	0.10	
82	21/01/2008	108.541	1.00	0.95	0.05	0.95	0.05	0.11	
83	21/01/2008	108.542	1.00	0.80	0.05	0.80	0.04	0.09	
84	21/01/2008	108.543	1.00	0.80	0.05	0.80	0.04	0.09	
85	21/01/2008	108.544	0.80	0.70	0.05	0.56	0.03	0.06	
86	21/01/2008	108.545	0.70	0.60	0.05	0.42	0.02	0.05	
87	21/01/2008	108.680	1.00	0.85	0.05	0.85	0.04	0.10	
88	22/01/2008	108.681	0.70	0.70	0.05	0.49	0.02	0.06	
89	22/01/2008	108.682	0.80	0.50	0.05	0.00	0.00	0.00	
90	22/01/2008	109.480	1.00	0.80	0.05	0.00	0.00	0.00	
CARRIED FORWARD :						63.45	3.17	7.36	

LINTASAN RESOURCES SDN. BHD.
MAINTENANCE OF FEDERAL ROADS - WEST COAST, SABAH
R01 POTHOLE PATCHING RECORD

DISTRICT: KOTA BELUD

ROUTE NO. 01

ROAD NAME: JALAN KOTA KINABALU - KUDAT

MONTH: JANUARY 2008

ITEM	DATE	CHAINAGE	Length (m)	Width (m)	Depth (m)	AREA (m2)	VOLUME (m3)	PREMIX QUANTITY (ton)	REMARKS
BROUGHT FORWARD:			-	-	-	63.45	3.17	7.36	
91	22/01/2008	109.481	0.80	0.70	0.05	0.56	0.03	0.06	ULU KUKUT
92	22/01/2008	109.482	0.70	0.40	0.05	0.28	0.01	0.03	
93	22/01/2008	109.483	0.80	0.50	0.05	0.40	0.02	0.05	
94	22/01/2008	109.484	0.80	0.60	0.05	0.48	0.02	0.06	
95	25/01/2008	109.500	0.90	0.50	0.05	0.45	0.02	0.05	
96	25/01/2008	109.510	0.70	0.50	0.05	0.35	0.02	0.04	
97	25/01/2008	109.580	1.00	0.80	0.05	0.80	0.04	0.09	
98	25/01/2008	109.680	0.60	0.60	0.05	0.36	0.02	0.04	
99	25/01/2008	109.780	1.00	0.90	0.05	0.90	0.05	0.10	
100	25/01/2008	109.781	0.90	0.50	0.05	0.45	0.02	0.05	
101	28/01/2008	63.780	0.60	0.60	0.05	0.36	0.02	0.04	KG. KELAWAT
102	28/01/2008	63.781	1.00	0.50	0.05	0.50	0.03	0.06	
103	28/01/2008	63.782	1.00	1.00	0.05	1.00	0.05	0.12	
104	28/01/2008	63.783	1.00	0.90	0.05	0.90	0.05	0.10	
105	28/01/2008	68.580	0.80	0.50	0.05	0.40	0.02	0.05	
106	28/01/2008	68.581	0.90	0.80	0.05	0.72	0.04	0.08	
107	28/01/2008	68.582	0.70	0.50	0.05	0.35	0.02	0.04	
108	28/01/2008	69.780	0.70	0.70	0.05	0.49	0.02	0.06	
109	28/01/2008	69.781	0.90	0.90	0.05	0.81	0.04	0.09	
110	28/01/2008	69.880	0.80	0.70	0.05	0.56	0.03	0.06	
111									
112									
113									
114									
115									
116									
117									
118									
119									
120									
BALANCE END OF JAN :						74.57	3.73	8.65	

LINTASAN RESOURCES SDN. BHD.
 MAINTENANCE OF FEDERAL ROADS - WEST COAST, SABAH

R01 POTHOLE PATCHING RECORD

DISTRICT: KOTA MARUDU
ROUTE NO. 01
ROAD NAME: JALAN KOTA KINABALU - KUDAT
MONTH: JANUARY 2008

ITEM	DATE	CHAINAGE	Length (m)	Width (m)	Depth (m)	AREA (m2)	VOLUME (m3)	PREMIX QUANTITY (ton)	REMARKS
BROUGHT FORWARD:			-	-	-				
1	03/01/2008	121.080	1.00	0.60	0.05	0.60	0.03	0.07	KG. LANGKON
2	03/01/2008	121.081	0.60	0.60	0.05	0.36	0.02	0.04	
3	03/01/2008	121.082	1.00	1.00	0.05	1.00	0.05	0.12	
4	04/01/2008	118.480	1.00	0.80	0.05	0.80	0.04	0.09	
5	04/01/2008	118.481	1.00	0.70	0.05	0.70	0.04	0.08	
6	04/01/2008	118.482	0.80	0.70	0.05	0.56	0.03	0.06	
7	04/01/2008	117.480	0.80	0.80	0.05	0.64	0.03	0.07	
8	04/01/2008	117.481	1.00	0.80	0.05	0.80	0.04	0.09	
9	04/01/2008	117.482	1.00	0.60	0.05	0.60	0.03	0.07	
10	04/01/2008	117.380	0.80	0.80	0.05	0.64	0.03	0.07	
11	04/01/2008	117.381	0.70	0.60	0.05	0.42	0.02	0.05	
12	07/01/2008	112.080	1.00	0.70	0.05	0.70	0.04	0.08	
13	07/01/2008	112.081	1.00	1.00	0.05	1.00	0.05	0.12	
14	07/01/2008	112.082	1.00	0.70	0.05	0.70	0.04	0.08	
15									
16									
17									
18									
19									
20									
21									
22									
23									
24									
25									
26									
27									
28									
29									
30									
BALANCE END OF JAN :						9.52	0.48	1.10	

LINTASAN RESOURCES SDN. BHD.
MAINTENANCE OF FEDERAL ROADS - WEST COAST, SABAH
R01 POTHOLE PATCHING RECORD

DISTRICT: KUDAT
ROUTE NO. 01
ROAD NAME: JALAN KOTA KINABALU - KUDAT
MONTH: JANUARY 2008

ITEM	DATE	CHAINAGE	Length (m)	Width (m)	Depth (m)	AREA (m2)	VOLUME (m3)	PREMIX QUANTITY (ton)	REMARKS
BROUGHT FORWARD:			-	-	-				
1	03/01/2008	187.300	1.00	0.60	0.05	0.60	0.03	0.07	KUDAT TOWNSHIP
2	03/01/2008	187.310	1.00	1.00	0.05	1.00	0.05	0.12	
3	03/01/2008	187.31	1.00	1.00	0.05	1.00	0.05	0.12	
4	03/01/2008	187.232	0.80	0.80	0.05	0.64	0.03	0.07	
5	03/01/2008	187.233	1.00	0.80	0.05	0.80	0.04	0.09	
6	03/01/2008	187.234	1.00	0.80	0.05	0.80	0.04	0.09	
7	03/01/2008	187.235	1.00	1.00	0.05	1.00	0.05	0.12	
8	05/01/2008	181.012	1.00	1.00	0.05	1.00	0.05	0.12	
9	05/01/2008	181.013	1.00	1.00	0.05	1.00	0.05	0.12	
10	05/01/2008	181.014	1.00	1.00	0.05	1.00	0.05	0.12	
11	05/01/2008	185.332	1.00	0.60	0.05	0.60	0.03	0.07	
12	05/01/2008	185.333	1.00	1.00	0.05	1.00	0.05	0.12	
13	05/01/2008	185.340	1.00	1.00	0.05	1.00	0.05	0.12	
14	07/01/2008	184.630	0.70	0.70	0.05	0.49	0.02	0.06	
15	07/01/2008	184.631	1.00	0.70	0.05	0.70	0.04	0.08	
16	07/01/2008	184.632	1.00	0.70	0.05	0.70	0.04	0.08	
17	07/01/2008	184.633	1.00	1.00	0.05	1.00	0.05	0.12	
18	07/01/2008	184.634	1.00	1.00	0.05	1.00	0.05	0.12	
19	08/01/2008	186.635	1.00	1.00	0.05	1.00	0.05	0.12	
20	08/01/2008	186.600	0.60	0.60	0.05	0.36	0.02	0.04	
21	08/01/2008	186.630	1.00	0.60	0.05	0.60	0.03	0.07	
22	08/01/2008	186.631	1.00	0.40	0.05	0.40	0.02	0.05	
23	08/01/2008	186.632	1.00	1.00	0.05	1.00	0.05	0.12	
24	08/01/2008	186.633	1.00	1.00	0.05	1.00	0.05	0.12	
25	09/01/2008	179.03	1.00	0.70	0.05	0.70	0.04	0.08	
26	09/01/2008	179.100	1.00	0.60	0.05	0.60	0.03	0.07	
27	09/01/2008	179.101	1.00	1.00	0.05	1.00	0.05	0.12	
28	09/01/2008	179.102	1.00	1.00	0.05	1.00	0.05	0.12	
29	09/01/2008	179.103	1.00	1.00	0.05	1.00	0.05	0.12	
30	11/01/2008	175.032	1.00	0.40	0.05	0.40	0.02	0.05	
CARRIED FORWARD :						24.39	1.22	2.83	

LINTASAN RESOURCES SDN. BHD.
 MAINTENANCE OF FEDERAL ROADS - WEST COAST, SABAH
R01 POTHOLE PATCHING RECORD

DISTRICT: KUDAT
ROUTE NO. 01
ROAD NAME: JALAN KOTA KINABALU - KUDAT
MONTH: JANUARY 2008

ITEM	DATE	CHAINAGE	Length (m)	Width (m)	Depth (m)	AREA (m2)	VOLUME (m3)	PREMIX QUANTITY (ton)	REMARKS
BROUGHT FORWARD:			-	-	-	24.39	1.22	2.83	
31	11/01/2008	175.410	1.00	0.50	0.05	0.50	0.03	0.06	
32	11/01/2008	175.411	1.00	1.00	0.05	1.00	0.05	0.12	
33	11/01/2008	175.41	1.00	1.00	0.05	1.00	0.05	0.12	
34	11/01/2008	175.413	1.00	0.80	0.05	0.80	0.04	0.09	
35	11/01/2008	175.420	1.00	0.70	0.05	0.70	0.04	0.08	
36	11/01/2008	175.421	1.00	1.00	0.05	1.00	0.05	0.12	
37	11/01/2008	175.422	1.00	1.00	0.05	1.00	0.05	0.12	
38	11/01/2008	175.423	1.00	1.00	0.05	1.00	0.05	0.12	KG. LANJONG
39	15/01/2008	165.700	1.00	0.60	0.05	0.60	0.03	0.07	
40	15/01/2008	165.701	1.00	1.00	0.05	1.00	0.05	0.12	
41	15/01/2008	165.702	1.00	1.00	0.05	1.00	0.05	0.12	
42	15/01/2008	165.703	1.00	1.00	0.05	1.00	0.05	0.12	
43	15/01/2008	165.704	1.00	0.70	0.05	0.70	0.04	0.08	
44	15/01/2008	165.705	1.00	0.40	0.05	0.40	0.02	0.05	
45	15/01/2008	165.710	0.70	0.70	0.05	0.49	0.02	0.06	
46	15/01/2008	165.632	1.00	0.90	0.05	0.90	0.05	0.10	
47	15/01/2008	165.232	1.00	1.00	0.05	1.00	0.05	0.12	
48	15/01/2008	165.233	1.00	1.00	0.05	1.00	0.05	0.12	
49	16/01/2008	164.900	0.90	0.80	0.05	0.72	0.04	0.08	
50	16/01/2008	164.901	1.00	0.90	0.05	0.90	0.05	0.10	
51	16/01/2008	162.832	1.00	0.80	0.05	0.80	0.04	0.09	
52	16/01/2008	162.800	0.70	0.50	0.05	0.35	0.02	0.04	
53	16/01/2008	162.810	1.00	0.70	0.05	0.70	0.04	0.08	
54	16/01/2008	162.811	1.00	0.50	0.05	0.50	0.03	0.06	
55	17/01/2008	170.500	0.80	0.80	0.05	0.64	0.03	0.07	KG. SIKUATI
56	17/01/2008	170.510	1.00	1.00	0.05	1.00	0.05	0.12	
57	17/01/2008	170.511	1.00	1.00	0.05	1.00	0.05	0.12	
58	17/01/2008	169.630	0.80	0.80	0.05	0.64	0.03	0.07	
59	17/01/2008	169.631	1.00	0.60	0.05	0.60	0.03	0.07	
60	17/01/2008	169.632	1.00	1.00	0.05	1.00	0.05	0.12	
CARRIED FORWARD :						48.33	2.42	5.61	

LINTASAN RESOURCES SDN. BHD.
MAINTENANCE OF FEDERAL ROADS - WEST COAST, SABAH
R01 POTHOLE PATCHING RECORD

DISTRICT: KUDAT

ROUTE NO. 01

ROAD NAME: JALAN KOTA KINABALU - KUDAT

MONTH: JANUARY 2008

ITEM	DATE	CHAINAGE	Length (m)	Width (m)	Depth (m)	AREA (m2)	VOLUME (m3)	PREMIX QUANTITY (ton)	REMARKS
BROUGHT FORWARD:			-	-	-	48.33	2.42	5.61	
61	17/01/2008	169.640	0.80	0.70	0.05	0.56	0.03	0.06	KG. LANJONG
62	17/01/2008	169.641	1.00	1.00	0.05	1.00	0.05	0.12	
63	17/01/2008	169.64	1.00	1.00	0.05	1.00	0.05	0.12	
64	17/01/2008	169.643	1.00	1.00	0.05	1.00	0.05	0.12	
65	17/01/2008	169.644	1.00	0.90	0.05	0.90	0.05	0.10	
66	17/01/2008	169.645	1.00	0.80	0.05	0.80	0.04	0.09	
67	17/01/2008	162.700	0.70	0.60	0.05	0.42	0.02	0.05	
68	18/01/2008	162.732	1.00	1.00	0.05	1.00	0.05	0.12	
69	18/01/2008	162.733	1.00	1.00	0.05	1.00	0.05	0.12	
70	18/01/2008	159.331	0.90	0.90	0.05	0.81	0.04	0.09	
71	18/01/2008	159.332	1.00	0.70	0.05	0.70	0.04	0.08	
72	18/01/2008	159.333	1.00	1.00	0.05	1.00	0.05	0.12	
73	19/01/2008	160.200	0.80	0.70	0.05	0.56	0.03	0.06	
74	19/01/2008	160.231	1.00	0.50	0.05	0.50	0.03	0.06	
75	19/01/2008	160.232	1.00	1.00	0.05	1.00	0.05	0.12	
76	19/01/2008	160.233	1.00	1.00	0.05	1.00	0.05	0.12	
77	19/01/2008	161.030	0.80	0.80	0.05	0.64	0.03	0.07	
78	19/01/2008	161.031	1.00	1.00	0.05	1.00	0.05	0.12	
79	19/01/2008	161.032	0.80	0.50	0.05	0.40	0.02	0.05	
80	19/01/2008	161.033	1.00	0.90	0.05	0.90	0.05	0.10	
81	21/01/2008	157.430	0.50	0.80	0.05	0.40	0.02	0.05	
82	21/01/2008	157.432	1.00	1.00	0.05	1.00	0.05	0.12	
83	21/01/2008	157.433	0.90	1.00	0.05	0.90	0.05	0.10	
84	21/01/2008	157.434	1.00	0.80	0.05	0.80	0.04	0.09	
85	21/01/2008	157.44	1.00	0.90	0.05	0.90	0.05	0.10	
86	21/01/2008	149.200	1.00	1.00	0.05	1.00	0.05	0.12	KG. MATUNGGUNG
87	21/01/2008	149.210	1.00	1.00	0.05	1.00	0.05	0.12	
88	21/01/2008	149.211	1.00	1.00	0.05	1.00	0.05	0.12	
89	23/01/2008	190.132	1.00	0.85	0.05	0.85	0.04	0.10	
90	23/01/2008	190.133	1.00	1.00	0.05	1.00	0.05	0.12	
CARRIED FORWARD :						73.37	3.67	8.51	

LINTASAN RESOURCES SDN. BHD.
MAINTENANCE OF FEDERAL ROADS - WEST COAST, SABAH

R01 POTHOLE PATCHING RECORD

DISTRICT: KUDAT
ROUTE NO. 01
ROAD NAME: JALAN KOTA KINABALU - KUDAT
MONTH: JANUARY 2008

ITEM	DATE	CHAINAGE	Length (m)	Width (m)	Depth (m)	AREA (m2)	VOLUME (m3)	PREMIX QUANTITY (ton)	REMARKS
BROUGHT FORWARD:			-	-	-	73.37	3.67	8.51	
91	23/01/2008	190.134	1.00	0.85	0.05	0.85	0.04	0.10	
92	23/01/2008	188.900	1.00	0.80	0.05	0.80	0.04	0.09	
93	23/01/2008	188.930	1.00	1.00	0.05	1.00	0.05	0.12	
94	23/01/2008	188.931	1.00	1.00	0.05	1.00	0.05	0.12	
95	23/01/2008	188.932	1.00	1.00	0.05	1.00	0.05	0.12	
96	23/01/2008	188.000	1.00	1.00	0.05	1.00	0.05	0.12	
97	23/01/2008	188.030	1.00	1.00	0.05	1.00	0.05	0.12	
98	23/01/2008	188.031	1.00	1.00	0.05	1.00	0.05	0.12	
99	23/01/2008	188.100	1.00	0.95	0.05	0.95	0.05	0.11	
100	23/01/2008	188.110	1.00	1.00	0.05	1.00	0.05	0.12	
101	23/01/2008	188.111	1.00	1.00	0.05	1.00	0.05	0.12	
102	23/01/2008	188.112	1.00	1.00	0.05	1.00	0.05	0.12	
103	23/01/2008	188.113	0.80	0.70	0.05	0.56	0.03	0.06	
104	23/01/2008	188.114	0.80	0.60	0.05	0.48	0.02	0.06	
105	24/01/2008	187.900	0.80	0.70	0.05	0.56	0.03	0.06	
106	24/01/2008	187.931	1.00	0.80	0.05	0.80	0.04	0.09	
107	24/01/2008	187.932	1.00	0.70	0.05	0.70	0.04	0.08	
108	24/01/2008	187.933	1.00	0.85	0.05	0.85	0.04	0.10	
109	24/01/2008	187.934	0.60	0.60	0.05	0.36	0.02	0.04	
110	24/01/2008	187.935	1.00	0.70	0.05	0.70	0.04	0.08	
111	24/01/2008	187.940	1.00	1.00	0.05	1.00	0.05	0.12	
112	26/01/2008	170.500	0.70	0.70	0.05	0.49	0.02	0.06	
113	26/01/2008	170.532	0.50	0.50	0.05	0.25	0.01	0.03	
114	26/01/2008	170.531	1.00	0.60	0.05	0.60	0.03	0.07	
115	26/01/2008	170.53	1.00	1.00	0.05	1.00	0.05	0.12	
116	26/01/2008	170.534	1.00	1.00	0.05	1.00	0.05	0.12	
117	26/01/2008	170.535	1.00	1.00	0.05	1.00	0.05	0.12	
118	28/01/2008	168.100	1.00	0.70	0.05	0.70	0.04	0.08	
119	28/01/2008	168.130	1.00	0.70	0.05	0.70	0.04	0.08	
120	28/01/2008	168.131	0.70	0.70	0.05	0.49	0.02	0.06	
CARRIED FORWARD :						97.21	4.86	11.28	

LINTASAN RESOURCES SDN. BHD.
MAINTENANCE OF FEDERAL ROADS - WEST COAST, SABAH

R01 POTHOLE PATCHING RECORD

DISTRICT: KUDAT
ROUTE NO. 01
ROAD NAME: JALAN KOTA KINABALU - KUDAT
MONTH: JANUARY 2008

ITEM	DATE	CHAINAGE	Length (m)	Width (m)	Depth (m)	AREA (m2)	VOLUME (m3)	PREMIX QUANTITY (ton)	REMARKS
BROUGHT FORWARD:			-	-	-	97.21	4.86	11.28	
121	28/01/2008	168.132	1.00	0.90	0.05	0.90	0.05	0.10	
122	28/01/2008	167.500	1.00	0.70	0.05	0.70	0.04	0.08	
123	29/01/2008	166.030	1.00	1.00	0.05	1.00	0.05	0.12	
124	29/01/2008	166.031	1.00	1.00	0.05	1.00	0.05	0.12	
125	29/01/2008	166.032	1.00	1.00	0.05	1.00	0.05	0.12	
126	29/01/2008	162.830	1.00	0.80	0.05	0.80	0.04	0.09	
127	29/01/2008	162.831	1.00	1.00	0.05	1.00	0.05	0.12	
128	29/01/2008	162.832	1.00	1.00	0.05	1.00	0.05	0.12	
129	29/01/2008	162.833	1.00	1.00	0.05	1.00	0.05	0.12	
130	29/01/2008	162.834	1.00	0.80	0.05	0.80	0.04	0.09	
131	29/01/2008	162.835	1.00	0.80	0.05	0.80	0.04	0.09	
132	29/01/2008	162.836	1.00	1.00	0.05	1.00	0.05	0.12	
133	30/01/2008	157.832	1.00	0.75	0.05	0.75	0.04	0.09	
134	30/01/2008	157.833	1.00	0.80	0.05	0.80	0.04	0.09	
135	30/01/2008	157.834	1.00	1.00	0.05	1.00	0.05	0.12	
136	30/01/2008	157.835	1.00	0.80	0.05	0.80	0.04	0.09	
137	30/01/2008	157.836	1.00	1.00	0.05	1.00	0.05	0.12	
138	30/01/2008	157.840	1.00	1.00	0.05	1.00	0.05	0.12	
139									
140									
141									
142									
143									
144									
145									
146									
147									
148									
149									
150									
BALANCE END OF JAN :						113.56	5.68	13.17	

LINTASAN RESOURCES SDN BHD.
 MAINTENANCE OF FEDERAL ROADS - WEST COAST, SABAH

SUMMARY - POTHOLE PATCHING RECORD

Month : January 2008

ITEM	DISTRICT	ROUTE NO.	ROAD NAME	AREA (m ²)			VOLUME (m ³)			PREMIX QUANTITY (TON)		
				PREVIOUS MONTH	CURRENT MONTH	CUM. MONTH	PREVIOUS MONTH	CURRENT MONTH	CUM. MONTH	PREVIOUS MONTH	CURRENT MONTH	CUM. MONTH
1	Ranau	22	Jalan Kota Kinabalu - Sandakan	-	220.65	220.65	-	14.13	14.13	-	32.83	32.83
TOTAL:				-	220.65	220.65	-	14.13	14.13	-	32.83	32.83

LINTASAN RESOURCES SDN. BHD.
MAINTENANCE OF FEDERAL ROADS - WEST COAST, SABAH

R01 POTHOLE PATCHING RECORD

DISTRICT: Ranau

ROUTE NO. 22

ROAD NAME: Jalan Kota Kinabalu - Sandakan

MONTH: January 2008

ITEM	DATE	CHAINAGE	Length (m)	Width (m)	Depth (m)	AREA (m ²)	VOLUME (m ³)	PREMIX QUANTITY (ton)	REMARKS
1	1/2/2008	54.300	2.00	1.40	0.10	2.80	0.28	0.65	LHS
2	1/4/2008	50.000	0.40	0.30	0.05	0.12	0.01	0.02	LHS
3	1/4/2008	50.010	0.60	0.50	0.05	0.30	0.02	0.05	LHS
4	1/4/2008	50.020	0.80	0.50	0.05	0.40	0.02	0.05	LHS
5	1/4/2008	50.030	0.90	0.50	0.05	0.45	0.02	0.05	LHS
6	1/4/2008	50.040	0.80	0.60	0.05	0.48	0.02	0.05	LHS
7	1/4/2008	50.050	1.30	0.80	0.05	1.04	0.05	0.12	LHS
8	1/4/2008	50.100	2.90	1.60	0.15	4.64	0.70	1.62	LHS
9	1/4/2008	50.110	0.30	0.30	0.05	0.09	0.00	0.00	RHS
10	1/4/2008	50.200	0.60	0.50	0.05	0.30	0.02	0.05	LHS
11	1/4/2008	50.210	1.00	0.80	0.05	0.80	0.04	0.09	LHS
12	1/4/2008	50.300	0.80	0.70	0.10	0.56	0.06	0.14	LHS
13	1/4/2008	50.310	0.40	0.30	0.05	0.12	0.01	0.02	LHS
14	1/4/2008	50.320	2.30	2.00	0.15	4.60	0.69	1.60	LHS
15	1/5/2008	51.000	2.50	1.60	0.05	4.00	0.20	0.46	LHS
16	1/5/2008	51.010	0.20	0.20	0.05	0.04	0.00	0.00	RHS
17	1/5/2008	51.020	0.80	0.70	0.05	0.56	0.03	0.07	LHS
18	1/5/2008	51.100	2.20	1.40	0.05	3.08	0.15	0.35	LHS
19	1/5/2008	51.110	1.00	0.80	0.05	0.80	0.04	0.09	LHS
20	1/5/2008	51.120	1.40	0.70	0.05	0.98	0.05	0.12	LHS
21	1/5/2008	51.200	1.00	0.80	0.05	0.80	0.04	0.09	LHS
22	1/7/2008	51.500	1.40	0.90	0.06	1.26	0.08	0.19	RHS
23	1/7/2008	53.600	1.40	1.10	0.15	1.54	0.23	0.53	RHS
24	1/7/2008	53.610	1.30	0.90	0.08	1.17	0.09	0.21	LHS
25	1/7/2008	54.100	2.10	1.20	0.15	2.52	0.38	0.88	RHS
26	1/7/2008	54.000	1.50	1.10	0.05	1.65	0.08	0.19	RHS
27	1/7/2008	47.700	0.90	0.60	0.05	0.54	0.03	0.07	LHS
28	1/7/2008	47.710	1.50	0.40	0.05	0.60	0.03	0.07	LHS
29	1/7/2008	47.600	0.80	0.80	0.05	0.64	0.03	0.07	LHS
30	1/7/2008	47.610	0.90	0.80	0.05	0.72	0.04	0.09	LHS
CARRIED FORWARD:						37.60	3.44	7.99	

LINTASAN RESOURCES SDN. BHD.
MAINTENANCE OF FEDERAL ROADS - WEST COAST, SABAH

R01 POTHOLE PATCHING RECORD

DISTRICT: Ranau

ROUTE NO. 22

ROAD NAME: Jalan Kota Kinabalu - Sandakan

MONTH: January 2008

ITEM	DATE	CHAINAGE	Length (m)	Width (m)	Depth (m)	AREA (m ²)	VOLUME (m ³)	PREMIX QUANTITY (ton)	REMARKS
BROUGHT FORWARD:						37.60	3.44	7.99	
31	1/7/2008	47.620	0.40	0.40	0.05	0.16	0.01	0.02	LHS
32	1/7/2008	47.630	0.50	0.40	0.05	0.20	0.01	0.02	LHS
33	1/7/2008	47.640	0.80	0.60	0.05	0.48	0.02	0.05	LHS
34	1/7/2008	47.650	0.80	0.70	0.05	0.56	0.03	0.07	LHS
35	1/7/2008	47.660	1.20	0.80	0.05	0.96	0.05	0.12	LHS
36	1/9/2008	54.300	1.10	0.60	0.10	0.66	0.07	0.16	LHS
37	1/9/2008	54.310	1.00	1.00	0.08	1.00	0.08	0.19	LHS
38	1/9/2008	54.320	4.50	0.60	0.06	2.70	0.16	0.37	LHS
39	1/9/2008	54.330	1.10	0.90	0.06	0.99	0.06	0.14	LHS
40	1/9/2008	54.340	1.80	0.40	0.06	0.72	0.04	0.09	LHS
41	1/9/2008	54.350	1.30	0.90	0.06	1.17	0.07	0.16	LHS
42	1/9/2008	54.400	1.90	0.70	0.08	1.33	0.11	0.26	LHS
43	1/9/2008	54.410	2.30	0.50	0.05	1.15	0.06	0.14	LHS
44	1/9/2008	54.420	3.60	0.90	0.05	3.24	0.16	0.37	LHS
45	1/9/2008	55.100	2.90	0.80	0.06	2.32	0.14	0.32	LHS
46	1/9/2008	55.110	0.80	0.80	0.05	0.64	0.03	0.07	LHS
47	1/9/2008	55.120	0.50	0.30	0.05	0.15	0.01	0.02	LHS
48	1/9/2008	55.200	0.90	0.70	0.10	0.63	0.06	0.14	LHS
49	1/9/2008	55.200	1.60	0.80	0.10	1.28	0.13	0.30	LHS
50	1/9/2008	55.210	1.00	0.60	0.06	0.60	0.04	0.09	LHS
51	1/11/2008	55.210	3.70	0.90	0.05	3.33	0.17	0.39	LHS
52	1/11/2008	55.220	2.80	0.60	0.06	1.68	0.10	0.23	LHS
53	1/11/2008	55.220	1.50	0.60	0.06	0.90	0.05	0.12	LHS
54	1/11/2008	55.230	0.70	0.60	0.05	0.42	0.02	0.05	LHS
55	1/11/2008	55.230	0.40	0.40	0.05	0.16	0.01	0.02	LHS
56	1/11/2008	55.240	1.30	0.70	0.05	0.91	0.05	0.12	LHS
57	1/11/2008	55.240	1.30	0.90	0.05	1.17	0.06	0.14	LHS
58	1/11/2008	55.250	12.20	0.60	0.05	7.32	0.37	0.86	LHS
59	1/11/2008	55.250	2.50	0.90	0.05	2.25	0.11	0.26	LHS
60	1/11/2008	55.260	1.50	1.00	0.06	1.50	0.09	0.21	LHS
CARRIED FORWARD:						78.18	5.81	13.49	

LINTASAN RESOURCES SDN. BHD.
MAINTENANCE OF FEDERAL ROADS - WEST COAST, SABAH

R01 POTHOLE PATCHING RECORD

DISTRICT: Ranau

ROUTE NO. 22

ROAD NAME: Jalan Kota Kinabalu - Sandakan

MONTH: January 2008

ITEM	DATE	CHAINAGE	Length (m)	Width (m)	Depth (m)	AREA (m ²)	VOLUME (m ³)	PREMIX QUANTITY (ton)	REMARKS
BROUGHT FORWARD:						78.18	5.81	13.49	
61	1/11/2008	55.260	2.40	0.70	0.05	1.68	0.08	0.19	LHS
62	1/11/2008	55.270	1.80	1.40	0.05	2.52	0.13	0.30	LHS
63	1/11/2008	55.270	2.40	1.60	0.10	3.84	0.38	0.88	LHS
64	1/11/2008	55.280	1.50	0.80	0.20	1.20	0.24	0.56	LHS
65	1/11/2008	55.280	0.80	0.60	0.10	0.48	0.05	0.12	RHS
66	1/11/2008	55.290	0.50	0.20	0.05	0.10	0.01	0.02	RHS
67	1/11/2008	56.400	1.30	0.90	0.08	1.17	0.09	0.21	LHS
68	1/11/2008	57.600	0.90	0.70	0.05	0.63	0.03	0.07	LHS
69	1/11/2008	57.800	0.60	0.50	0.05	0.30	0.02	0.05	LHS
70	1/14/2008	80.100	2.90	1.00	0.08	2.90	0.23	0.53	RHS
71	1/14/2008	80.110	1.00	0.60	0.10	0.60	0.06	0.14	RHS
72	1/14/2008	80.120	1.50	0.80	0.06	1.20	0.07	0.16	RHS
73	1/14/2008	77.600	0.40	0.30	0.05	0.12	0.01	0.02	RHS
74	1/14/2008	77.610	0.40	0.20	0.05	0.08	0.00	0.00	RHS
75	1/14/2008	77.620	0.20	0.20	0.05	0.04	0.00	0.00	RHS
76	1/14/2008	77.500	0.50	0.30	0.05	0.15	0.01	0.02	RHS
77	1/14/2008	77.200	1.00	0.60	0.05	0.60	0.03	0.07	LHS
78	1/14/2008	77.210	1.20	0.30	0.05	0.36	0.02	0.05	LHS
79	1/14/2008	77.220	0.80	0.40	0.05	0.32	0.02	0.05	RHS
80	1/14/2008	77.100	0.40	0.20	0.05	0.08	0.00	0.00	RHS
81	1/14/2008	76.800	0.60	0.50	0.05	0.30	0.02	0.05	LHS
82	1/14/2008	75.700	0.80	0.60	0.05	0.48	0.02	0.05	LHS
83	1/14/2008	75.710	0.20	0.20	0.05	0.04	0.00	0.00	LHS
84	1/14/2008	75.600	1.70	1.00	0.10	1.70	0.17	0.39	LHS
85	1/14/2008	75.610	1.80	1.30	0.06	2.34	0.14	0.32	RHS
86	1/14/2008	75.620	1.70	1.60	0.06	2.72	0.16	0.37	RHS
87	1/14/2008	75.630	1.20	1.20	0.06	1.44	0.09	0.21	RHS
88	1/15/2008	58.600	3.10	1.00	0.05	3.10	0.16	0.37	RHS
89	1/15/2008	58.610	1.20	0.80	0.08	0.96	0.08	0.19	RHS
90	1/15/2008	58.700	0.60	0.60	0.05	0.36	0.02	0.05	RHS
CARRIED FORWARD:						109.99	8.15	18.93	

LINTASAN RESOURCES SDN. BHD.
MAINTENANCE OF FEDERAL ROADS - WEST COAST, SABAH

R01 POTHOLE PATCHING RECORD

DISTRICT: Ranau

ROUTE NO. 22

ROAD NAME: Jalan Kota Kinabalu - Sandakan

MONTH: January 2008

ITEM	DATE	CHAINAGE	Length (m)	Width (m)	Depth (m)	AREA (m ²)	VOLUME (m ³)	PREMIX QUANTITY (ton)	REMARKS
BROUGHT FORWARD:						109.99	8.15	18.93	
91	1/15/2008	58.710	5.00	1.00	0.05	5.00	0.25	0.58	RHS
92	1/15/2008	58.720	0.60	0.50	0.05	0.30	0.02	0.05	RHS
93	1/15/2008	58.900	1.10	0.50	0.05	0.55	0.03	0.07	LHS
94	1/15/2008	58.910	0.70	0.50	0.05	0.35	0.02	0.05	LHS
95	1/15/2008	64.400	6.00	1.00	0.08	6.00	0.48	1.11	LHS
96	1/17/2008	72.800	2.70	0.60	0.05	1.62	0.08	0.19	LHS
97	1/17/2008	73.100	0.50	0.40	0.05	0.20	0.01	0.02	RHS
98	1/17/2008	73.100	1.20	0.70	0.05	0.84	0.04	0.09	RHS
99	1/17/2008	73.110	0.80	0.50	0.05	0.40	0.02	0.05	RHS
100	1/17/2008	73.110	1.10	1.10	0.05	1.21	0.06	0.14	RHS
101	1/17/2008	73.120	0.60	0.40	0.05	0.24	0.01	0.02	RHS
102	1/17/2008	73.120	0.60	0.30	0.05	0.18	0.01	0.02	RHS
103	1/17/2008	73.130	1.20	1.10	0.05	1.32	0.07	0.16	RHS
104	1/17/2008	73.130	0.80	0.40	0.05	0.32	0.02	0.05	LHS
105	1/17/2008	73.140	0.70	0.60	0.05	0.42	0.02	0.05	LHS
106	1/17/2008	73.200	1.80	1.30	0.05	2.34	0.12	0.28	RHS
107	1/17/2008	73.210	1.10	0.80	0.05	0.88	0.04	0.09	RHS
108	1/17/2008	73.220	0.40	0.40	0.05	0.16	0.01	0.02	RHS
109	1/17/2008	73.230	2.90	0.50	0.05	1.45	0.07	0.16	LHS
110	1/18/2008	75.200	0.70	0.60	0.05	0.42	0.02	0.05	LHS
111	1/18/2008	75.100	1.20	0.70	0.05	0.84	0.04	0.09	RHS
112	1/18/2008	75.110	1.50	1.20	0.05	1.80	0.09	0.21	LHS
113	1/18/2008	75.120	1.50	0.30	0.05	0.45	0.02	0.05	LHS
114	1/18/2008	75.130	1.90	1.10	0.05	2.09	0.10	0.23	LHS
115	1/18/2008	75.140	1.20	0.70	0.08	0.84	0.07	0.16	LHS
116	1/21/2008	57.800	1.10	0.70	0.06	0.77	0.05	0.12	LHS
117	1/21/2008	57.810	0.60	0.60	0.05	0.36	0.02	0.05	LHS
118	1/21/2008	57.820	0.90	0.50	0.05	0.45	0.02	0.05	LHS
119	1/21/2008	57.900	0.70	0.50	0.05	0.35	0.02	0.05	LHS
120	1/21/2008	57.900	0.70	0.60	0.05	0.42	0.02	0.05	LHS
CARRIED FORWARD:						142.56	10.00	23.24	

LINTASAN RESOURCES SDN. BHD.
MAINTENANCE OF FEDERAL ROADS - WEST COAST, SABAH

R01 POTHOLE PATCHING RECORD

DISTRICT: Ranau

ROUTE NO. 22

ROAD NAME: Jalan Kota Kinabalu - Sandakan

MONTH: January 2008

ITEM	DATE	CHAINAGE	Length (m)	Width (m)	Depth (m)	AREA (m ²)	VOLUME (m ³)	PREMIX QUANTITY (ton)	REMARKS
BROUGHT FORWARD:						142.56	10.00	23.24	
121	1/21/2008	57.910	0.80	0.50	0.05	0.40	0.02	0.05	RHS
122	1/21/2008	57.910	0.60	0.50	0.05	0.30	0.02	0.05	RHS
123	1/21/2008	57.920	0.50	0.40	0.05	0.20	0.01	0.02	RHS
124	1/21/2008	57.920	0.30	0.30	0.05	0.09	0.00	0.00	RHS
125	1/21/2008	57.930	0.30	0.20	0.05	0.06	0.00	0.00	RHS
126	1/21/2008	57.930	0.20	0.20	0.05	0.04	0.00	0.00	RHS
127	1/21/2008	57.940	0.50	0.50	0.05	0.25	0.01	0.02	RHS
128	1/21/2008	57.940	0.40	0.20	0.05	0.08	0.00	0.00	LHS
129	1/21/2008	57.950	0.40	0.30	0.05	0.12	0.01	0.02	LHS
130	1/21/2008	58.000	0.50	0.50	0.05	0.25	0.01	0.02	LHS
131	1/21/2008	58.000	0.30	0.30	0.05	0.09	0.00	0.00	LHS
132	1/21/2008	58.010	0.30	0.20	0.05	0.06	0.00	0.00	LHS
133	1/21/2008	58.010	0.20	0.20	0.05	0.04	0.00	0.00	LHS
134	1/21/2008	58.020	0.80	0.70	0.05	0.56	0.03	0.07	RHS
135	1/21/2008	58.020	0.40	0.30	0.05	0.12	0.01	0.02	RHS
136	1/21/2008	58.030	1.60	0.90	0.05	1.44	0.07	0.16	RHS
137	1/21/2008	58.100	1.00	0.90	0.05	0.90	0.05	0.12	RHS
138	1/21/2008	58.110	0.40	0.20	0.05	0.08	0.00	0.00	RHS
139	1/21/2008	58.120	0.30	0.20	0.05	0.06	0.00	0.00	RHS
140	1/21/2008	61.700	3.90	1.00	0.05	3.90	0.20	0.46	LHS
141	1/21/2008	61.710	2.80	1.30	0.05	3.64	0.18	0.42	LHS
142	1/21/2008	61.720	1.20	1.10	0.05	1.32	0.07	0.16	LHS
143	1/21/2008	61.900	1.50	1.40	0.05	2.10	0.11	0.26	RHS
144	1/23/2008	73.600	0.90	0.70	0.05	0.63	0.03	0.07	RHS
145	1/23/2008	73.610	0.40	0.30	0.05	0.12	0.01	0.02	RHS
146	1/23/2008	73.620	1.20	1.00	0.05	1.20	0.06	0.14	RHS
147	1/23/2008	73.630	1.20	0.90	0.05	1.08	0.05	0.12	RHS
148	1/23/2008	74.000	0.40	0.30	0.05	0.12	0.01	0.02	LHS
149	1/23/2008	74.010	0.60	0.50	0.05	0.30	0.02	0.05	LHS
150	1/23/2008	74.020	0.80	0.30	0.05	0.24	0.01	0.02	LHS
CARRIED FORWARD:						162.35	10.99	25.53	

LINTASAN RESOURCES SDN. BHD.
MAINTENANCE OF FEDERAL ROADS - WEST COAST, SABAH

R01 POTHOLE PATCHING RECORD

DISTRICT: Ranau

ROUTE NO. 22

ROAD NAME: Jalan Kota Kinabalu - Sandakan

MONTH: January 2008

ITEM	DATE	CHAINAGE	Length (m)	Width (m)	Depth (m)	AREA (m ²)	VOLUME (m ³)	PREMIX QUANTITY (ton)	REMARKS
BROUGHT FORWARD:						162.35	10.99	25.53	
151	1/23/2008	74.030	1.60	0.90	0.05	1.44	0.07	0.16	LHS
152	1/23/2008	74.040	0.90	0.80	0.05	0.72	0.04	0.09	LHS
153	1/23/2008	74.300	2.00	0.70	0.05	1.40	0.07	0.16	RHS
154	1/23/2008	74.800	1.00	0.80	0.05	0.80	0.04	0.09	LHS
155	1/23/2008	74.810	2.20	1.10	0.05	2.42	0.12	0.28	LHS
156	1/23/2008	74.820	1.20	0.90	0.05	1.08	0.05	0.12	LHS
157	1/23/2008	74.800	1.20	0.30	0.05	0.36	0.02	0.05	LHS
158	1/23/2008	74.840	1.00	0.70	0.05	0.70	0.04	0.09	LHS
159	1/23/2008	74.850	0.70	0.60	0.05	0.42	0.02	0.05	LHS
160	1/23/2008	74.900	1.00	0.80	0.05	0.80	0.04	0.09	RHS
161	1/23/2008	74.910	1.30	0.70	0.05	0.91	0.05	0.12	RHS
162	1/23/2008	74.920	0.70	0.50	0.05	0.35	0.02	0.05	RHS
163	1/23/2008	74.930	0.30	0.30	0.05	0.09	0.00	0.00	RHS
164	1/25/2008	48.300	1.70	1.00	0.06	1.70	0.10	0.23	LHS
165	1/25/2008	48.300	0.70	0.70	0.05	0.49	0.02	0.05	LHS
166	1/25/2008	48.310	0.80	0.70	0.05	0.56	0.03	0.07	LHS
167	1/25/2008	48.310	1.30	1.10	0.05	1.43	0.07	0.16	LHS
168	1/25/2008	48.320	0.50	0.40	0.05	0.20	0.01	0.02	RHS
169	1/25/2008	48.320	0.70	0.50	0.05	0.35	0.02	0.05	RHS
170	1/25/2008	48.330	0.30	0.20	0.05	0.06	0.00	0.00	RHS
171	1/25/2008	48.330	0.60	0.40	0.05	0.24	0.01	0.02	RHS
172	1/25/2008	48.200	0.80	0.60	0.05	0.48	0.02	0.05	LHS
173	1/25/2008	48.200	1.00	0.90	0.05	0.90	0.05	0.12	LHS
174	1/25/2008	48.210	0.70	0.50	0.05	0.35	0.02	0.05	RHS
175	1/25/2008	48.210	3.20	1.00	0.05	3.20	0.16	0.37	RHS
176	1/25/2008	48.220	0.70	0.80	0.05	0.56	0.03	0.07	RHS
177	1/25/2008	48.220	0.50	0.40	0.05	0.20	0.01	0.02	RHS
178	1/25/2008	48.230	0.80	0.60	0.05	0.48	0.02	0.05	RHS
179	1/25/2008	48.100	1.10	0.60	0.05	0.66	0.03	0.07	RHS
180	1/25/2008	48.100	0.90	0.60	0.05	0.54	0.03	0.07	RHS
CARRIED FORWARD:						186.24	12.20	28.35	

LINTASAN RESOURCES SDN. BHD.
MAINTENANCE OF FEDERAL ROADS - WEST COAST, SABAH

R01 POTHOLE PATCHING RECORD

DISTRICT: Ranau

ROUTE NO. 22

ROAD NAME: Jalan Kota Kinabalu - Sandakan

MONTH: Jalan Kota Kinabalu - Sandakan

ITEM	DATE	CHAINAGE	Length (m)	Width (m)	Depth (m)	AREA (m ²)	VOLUME (m ³)	PREMIX QUANTITY (ton)	REMARKS
BROUGHT FORWARD:						186.24	12.20	28.35	
181	1/25/2008	48.110	1.20	0.80	0.05	0.96	0.05	0.12	RHS
182	1/25/2008	48.110	0.50	0.50	0.05	0.25	0.01	0.02	RHS
183	1/25/2008	48.120	0.30	0.20	0.05	0.06	0.00	0.00	RHS
184	1/25/2008	48.120	0.90	0.80	0.05	0.72	0.04	0.09	RHS
185	1/25/2008	48.130	0.20	0.20	0.05	0.04	0.00	0.00	RHS
186	1/25/2008	48.130	0.40	0.30	0.05	0.12	0.01	0.02	RHS
187	1/25/2008	48.140	0.20	0.20	0.05	0.04	0.00	0.00	RHS
188	1/25/2008	48.140	0.30	0.20	0.05	0.06	0.00	0.00	RHS
189	1/25/2008	48.150	0.60	0.40	0.05	0.24	0.01	0.02	RHS
190	1/25/2008	48.150	0.80	0.70	0.05	0.56	0.03	0.07	RHS
191	1/25/2008	48.000	0.70	0.70	0.05	0.49	0.02	0.05	RHS
192	1/25/2008	48.010	0.50	0.50	0.05	0.25	0.01	0.02	RHS
193	1/25/2008	48.020	0.60	0.50	0.05	0.30	0.02	0.05	RHS
194	1/25/2008	48.030	0.50	0.40	0.05	0.20	0.01	0.02	RHS
195	1/25/2008	48.040	1.80	0.70	0.05	1.26	0.06	0.14	LHS
196	1/28/2008	48.900	0.60	0.50	0.05	0.30	0.02	0.05	LHS
197	1/28/2008	48.910	0.90	0.70	0.05	0.63	0.03	0.07	LHS
198	1/28/2008	48.920	4.30	1.20	0.05	5.16	0.26	0.60	LHS
199	1/28/2008	48.930	0.50	0.40	0.05	0.20	0.01	0.02	LHS
200	1/28/2008	48.940	0.40	0.40	0.05	0.16	0.01	0.02	LHS
201	1/28/2008	48.950	1.90	0.80	0.05	1.52	0.08	0.19	LHS
202	1/30/2008	47.900	4.30	1.20	0.06	5.16	0.31	0.72	LHS
203	1/30/2008	47.910	1.90	1.10	0.06	2.09	0.13	0.30	LHS
204	1/30/2008	47.920	5.60	1.80	0.06	10.08	0.60	1.39	LHS
205	1/30/2008	47.930	0.40	0.30	0.05	0.12	0.01	0.02	LHS
206	1/31/2008	130.400	1.30	1.00	0.06	1.30	0.08	0.19	LHS
207	1/31/2008	130.410	1.80	0.20	0.06	0.36	0.02	0.05	LHS
208	1/31/2008	130.420	2.20	0.20	0.05	0.44	0.02	0.05	LHS
209	1/31/2008	130.430	1.50	0.20	0.06	0.30	0.02	0.05	LHS
210	1/31/2008	130.440	1.30	0.80	0.06	1.04	0.06	0.14	LHS
CARRIED FORWARD:						220.65	14.13	32.83	

LINTASAN RESOURCES SDN. BHD.

MAINTENANCE OF FEDERAL ROADS - LABUAN, FT

R01 POT HOLE PATCHING RECORD

DISTRICT: W.P LABUAN

ROUTE NO. REFER TO REMARKS

ROAD NAME: REFER TO REMARKS

MONTH: JANUARY 2008

ITEM	DATE	CHAINAGE (KM)	Length (m)	Width (m)	Depth (m)	AREA (m ²)	VOLUME (m ³)	PREMIX QUANTITY (ton)	REMARKS
BROUGHT FORWARD:			-	-	-	0.00	0.00	0.00	
1	03/01/2008	0.75	0.75	0.45	0.08	0.34	0.03	0.06	L 700 - Jalan Tun Mustapha
2	"	0.75	0.75	0.40	0.08	0.30	0.02	0.05	L 700 - Jalan Tun Mustapha
3	"	0.75	0.95	0.50	0.08	0.48	0.04	0.08	L 700 - Jalan Tun Mustapha
4	"	0.75	0.70	0.57	0.08	0.40	0.03	0.07	L 700 - Jalan Tun Mustapha
5	"	0.76	0.70	0.57	0.08	0.40	0.03	0.07	L 700 - Jalan Tun Mustapha
6	"	0.76	0.70	0.57	0.08	0.40	0.03	0.07	L 700 - Jalan Tun Mustapha
7	"	0.40	0.73	0.60	0.08	0.44	0.03	0.08	L 709 - Jalan Tg Batu/Tg Purun
8	"	0.77	0.80	0.75	0.08	0.60	0.05	0.10	L 709 - Jalan Tg Batu/Tg Purun
9	"	0.77	0.75	0.70	0.08	0.53	0.04	0.09	L 709 - Jalan Tg Batu/Tg Purun
10	"	1.10	0.85	0.80	0.08	0.68	0.05	0.12	L 709 - Jalan Tg Batu/Tg Purun
11	"	1.11	0.80	0.80	0.08	0.64	0.05	0.11	L 709 - Jalan Tg Batu/Tg Purun
12	"	1.11	0.85	0.80	0.08	0.68	0.05	0.12	L 709 - Jalan Tg Batu/Tg Purun
13	"	1.13	0.60	0.50	0.08	0.30	0.02	0.05	L 709 - Jalan Tg Batu/Tg Purun
14	"	1.13	0.70	0.55	0.08	0.39	0.03	0.07	L 709 - Jalan Tg Batu/Tg Purun
15	04/01/2008	0.80	0.68	0.65	0.08	0.44	0.03	0.08	L 709 - Jalan Tg Batu/Tg Purun
16	"	0.81	0.70	0.61	0.08	0.43	0.03	0.07	L 709 - Jalan Tg Batu/Tg Purun
17	"	1.37	0.78	0.75	0.08	0.59	0.04	0.10	L 709 - Jalan Tg Batu/Tg Purun
18	"	1.38	0.80	0.70	0.08	0.56	0.04	0.10	L 709 - Jalan Tg Batu/Tg Purun
19	"	1.38	1.00	0.80	0.08	0.80	0.06	0.14	L 709 - Jalan Tg Batu/Tg Purun
20	"	1.41	0.90	0.65	0.08	0.59	0.04	0.10	L 709 - Jalan Tg Batu/Tg Purun
21	"	1.41	0.70	0.62	0.08	0.43	0.03	0.07	L 709 - Jalan Tg Batu/Tg Purun
22	05/01/2008	0.19	1.00	1.00	0.08	1.00	0.08	0.17	L 705 - Jalan Bebuloh
23	"	0.65	0.92	0.65	0.08	0.60	0.04	0.10	L 705 - Jalan Bebuloh
24	"	6.62	0.80	0.75	0.08	0.60	0.05	0.10	L 705 - Jalan Bebuloh
25	"	6.63	0.80	0.75	0.08	0.60	0.05	0.10	L 705 - Jalan Bebuloh
26	"	6.63	0.80	0.75	0.08	0.60	0.05	0.10	L 705 - Jalan Bebuloh
27	"	6.63	0.80	0.75	0.08	0.60	0.05	0.10	L 705 - Jalan Bebuloh
28	"	6.63	0.80	0.75	0.08	0.60	0.05	0.10	L 705 - Jalan Bebuloh
29	"	6.63	0.90	0.75	0.08	0.68	0.05	0.12	L 705 - Jalan Bebuloh
30	07/01/2008	5.83	0.62	0.60	0.08	0.37	0.03	0.06	L 706 - Jalan Ranche-ranche
31	"	5.85	0.68	0.58	0.08	0.39	0.03	0.07	L 706 - Jalan Ranche-ranche
32	"	5.86	0.76	0.70	0.08	0.53	0.04	0.09	L 706 - Jalan Ranche-ranche
33	"	5.88	0.60	0.50	0.08	0.30	0.02	0.05	L 706 - Jalan Ranche-ranche
34	"	5.89	0.60	0.50	0.08	0.30	0.02	0.05	L 706 - Jalan Ranche-ranche
TOTAL C/F :						17.56	1.32	3.03	

LINTASAN RESOURCES SDN. BHD.

MAINTENANCE OF FEDERAL ROADS - LABUAN, FT

R01 POTHOLE PATCHING RECORD

DISTRICT: W.P LABUAN

ROUTE NO. REFER TO REMARKS

ROAD NAME: REFER TO REMARKS

MONTH: JANUARY 2008

ITEM	DATE	CHAINAGE (KM)	Length (m)	Width (m)	Depth (m)	AREA (m ²)	VOLUME (m ³)	PREMIX QUANTITY (ton)	REMARKS
BROUGHT FORWARD:			-	-	-	17.56	1.32	3.03	
35	07/01/2008	0.48	0.76	0.70	0.08	0.53	0.04	0.09	L 711 - Jalan Kg. Jawa/Jumidar Buyong
36	"	0.48	0.80	0.76	0.08	0.61	0.05	0.10	L 711 - Jalan Kg. Jawa/Jumidar Buyong
37	"	0.56	0.72	0.68	0.08	0.49	0.04	0.08	L 711 - Jalan Kg. Jawa/Jumidar Buyong
38	"	0.63	0.80	0.74	0.08	0.59	0.04	0.10	L 711 - Jalan Kg. Jawa/Jumidar Buyong
39	"	0.88	1.00	0.72	0.08	0.72	0.05	0.12	L 711 - Jalan Kg. Jawa/Jumidar Buyong
40	08/01/2008	3.60	0.92	0.72	0.08	0.66	0.05	0.11	L 706 - Jalan Ranche-ranche
41	"	3.65	0.95	0.80	0.08	0.76	0.06	0.13	L 706 - Jalan Ranche-ranche
42	"	3.40	0.82	0.70	0.08	0.57	0.04	0.10	L 706 - Jalan Ranche-ranche
43	"	3.40	0.82	0.80	0.08	0.66	0.05	0.11	L 706 - Jalan Ranche-ranche
44	"	5.60	0.90	0.70	0.08	0.63	0.05	0.11	L 700 - Jalan Patau-patau
45	"	1.13	0.50	0.50	0.08	0.25	0.02	0.04	L 700 - Jalan Patau-patau
46	"	1.13	1.00	0.80	0.08	0.80	0.06	0.14	L 700 - Jalan Patau-patau
47	09/01/2008	3.95	0.80	0.70	0.08	0.56	0.04	0.10	L 710 - Jalan Bukit Kuda
48	"	3.96	0.80	0.80	0.08	0.64	0.05	0.11	L 710 - Jalan Bukit Kuda
49	"	2.01	1.00	0.70	0.08	0.70	0.05	0.12	L 707 - Jalan Batu Arang
50	"	2.01	1.00	0.75	0.08	0.75	0.06	0.13	L 707 - Jalan Batu Arang
51	"	0.12	1.00	1.00	0.08	1.00	0.08	0.17	L 705 - Jalan Bebuloh
52	"	0.12	1.00	0.80	0.08	0.80	0.06	0.14	L 705 - Jalan Bebuloh
53	"	0.12	1.00	0.70	0.08	0.70	0.05	0.12	L 705 - Jalan Bebuloh
54	12/01/2008	0.48	0.90	0.70	0.08	0.63	0.05	0.11	L 707 - Jalan Pulau Buah
55	"	0.48	0.90	0.80	0.08	0.72	0.05	0.12	L 707 - Jalan Pulau Buah
56	14/01/2008	1.10	0.75	0.65	0.08	0.49	0.04	0.08	L 709 - Jalan Tg. Batu/Tg. Purun
57	"	1.11	0.58	0.50	0.08	0.29	0.02	0.05	L 709 - Jalan Tg. Batu/Tg. Purun
58	"	1.03	0.70	0.59	0.08	0.41	0.03	0.07	L 709 - Jalan Tg. Batu/Tg. Purun
59	"	0.48	0.70	0.60	0.08	0.42	0.03	0.07	L 733 - Jalan Peny'bung Bg. Tanjung
60	"	0.48	0.55	0.50	0.08	0.28	0.02	0.05	L 733 - Jalan Peny'bung Bg. Tanjung
61	"	0.20	0.70	0.65	0.08	0.46	0.03	0.08	L 700 - Jalan Patau-patau
62	"	0.41	0.78	0.70	0.08	0.55	0.04	0.09	L 700 - Jalan Patau-patau
63	"	0.41	0.80	0.78	0.08	0.62	0.05	0.11	L 700 - Jalan Patau-patau
64	"	0.81	0.74	0.70	0.08	0.52	0.04	0.09	L 706 - Jalan Ranche-ranche
65	"	0.81	0.74	0.70	0.08	0.52	0.04	0.09	L 706 - Jalan Ranche-ranche
66	"	0.81	0.74	0.60	0.08	0.44	0.03	0.08	L 706 - Jalan Ranche-ranche
67	"	0.81	0.85	0.74	0.08	0.63	0.05	0.11	L 706 - Jalan Ranche-ranche
68	"	3.04	0.93	0.70	0.08	0.65	0.05	0.11	L 706 - Jalan Ranche-ranche
TOTAL C/F :						37.61	2.82	6.49	

LINTASAN RESOURCES SDN. BHD.

MAINTENANCE OF FEDERAL ROADS - LABUAN, FT

R01 POTHOLE PATCHING RECORD

DISTRICT: W.P LABUAN

ROUTE NO. REFER TO REMARKS

ROAD NAME: REFER TO REMARKS

MONTH: JANUARY 2008

ITEM	DATE	CHAINAGE (KM)	Length (m)	Width (m)	Depth (m)	AREA (m ²)	VOLUME (m ³)	PREMIX QUANTITY (ton)	REMARKS
BROUGHT FORWARD:			-	-	-	37.61	2.82	6.49	
69	14/01/2008	3.04	0.93	0.80	0.08	0.74	0.06	0.13	L 706 - Jalan Rancha-rancha
70	"	3.04	0.93	0.70	0.08	0.65	0.05	0.11	L 706 - Jalan Rancha-rancha
71	16/01/2008	3.80	1.00	0.60	0.08	0.60	0.05	0.10	L 705 - Jalan Bebuloh
72	"	4.40	1.00	0.90	0.08	0.90	0.07	0.16	L 705 - Jalan Bebuloh
73	"	4.40	1.00	1.00	0.08	1.00	0.08	0.17	L 705 - Jalan Bebuloh
74	"	0.95	1.00	1.00	0.08	1.00	0.08	0.17	L 705 - Jalan Bebuloh
75	"	0.96	1.00	0.70	0.08	0.70	0.05	0.12	L 705 - Jalan Bebuloh
76	"	0.11	1.00	0.70	0.08	0.70	0.05	0.12	L 705 - Jalan Bebuloh
77	"	0.11	1.00	0.80	0.08	0.80	0.06	0.14	L 705 - Jalan Bebuloh
78	"	0.30	1.00	1.00	0.08	1.00	0.08	0.17	L 735 - Jalan Tangki Air Kiansam
79	"	0.30	1.00	1.00	0.08	1.00	0.08	0.17	L 735 - Jalan Tangki Air Kiansam
80	"	0.30	1.00	0.80	0.08	0.80	0.06	0.14	L 735 - Jalan Tangki Air Kiansam
81	18/01/2008	1.39	1.00	0.90	0.08	0.90	0.07	0.16	L 703 - Jalan Okk Daud
82	"	1.39	1.00	0.56	0.08	0.56	0.04	0.10	L 703 - Jalan Okk Daud
83	"	1.39	0.60	0.56	0.08	0.34	0.03	0.06	L 703 - Jalan Okk Daud
84	"	1.39	0.70	0.56	0.08	0.39	0.03	0.07	L 703 - Jalan Okk Daud
85	"	1.39	1.00	0.65	0.08	0.65	0.05	0.11	L 703 - Jalan Okk Daud
86	19/01/2008	1.19	1.00	0.78	0.08	0.78	0.06	0.13	L 707 - Jalan Batu Arang
87	"	1.19	1.00	0.75	0.08	0.75	0.06	0.13	L 707 - Jalan Batu Arang
88	"	1.19	1.00	0.75	0.08	0.75	0.06	0.13	L 707 - Jalan Batu Arang
89	"	1.19	1.00	0.90	0.08	0.90	0.07	0.16	L 707 - Jalan Batu Arang
90	"	1.19	1.00	0.90	0.08	0.90	0.07	0.16	L 707 - Jalan Batu Arang
91	"	1.19	0.95	0.90	0.08	0.86	0.06	0.15	L 707 - Jalan Batu Arang
92	21/01/2008	5.90	0.95	0.80	0.08	0.76	0.06	0.13	L 706 - Jalan Rancha-rancha
93	"	5.92	1.00	0.75	0.08	0.75	0.06	0.13	L 706 - Jalan Rancha-rancha
94	"	5.98	0.70	0.50	0.08	0.35	0.03	0.06	L 706 - Jalan Rancha-rancha
95	"	5.97	0.80	0.50	0.08	0.40	0.03	0.07	L 706 - Jalan Rancha-rancha
96	"	5.96	0.85	0.78	0.08	0.66	0.05	0.11	L 706 - Jalan Rancha-rancha
97	"	5.96	0.95	0.90	0.08	0.86	0.06	0.15	L 706 - Jalan Rancha-rancha
98	"	5.95	0.95	0.90	0.08	0.86	0.06	0.15	L 706 - Jalan Rancha-rancha
99	"	5.95	1.00	0.75	0.08	0.75	0.06	0.13	L 706 - Jalan Rancha-rancha
100	"	1.91	0.75	0.70	0.08	0.53	0.04	0.09	L 706 - Jalan Rancha-rancha
101	"	1.68	1.00	1.00	0.08	1.00	0.08	0.17	L 700 - Jalan Patau-patau
102	"	1.68	1.00	1.00	0.08	1.00	0.08	0.17	L 700 - Jalan Patau-patau
TOTAL C/F :						63.18	4.74	10.90	

LINTASAN RESOURCES SDN. BHD.

MAINTENANCE OF FEDERAL ROADS - LABUAN, FT

R01 POTHOLE PATCHING RECORD

DISTRICT: W.P LABUAN

ROUTE NO. REFER TO REMARKS

ROAD NAME: REFER TO REMARKS

MONTH: JANUARY 2008

ITEM	DATE	CHAINAGE (KM)	Length (m)	Width (m)	Depth (m)	AREA (m ²)	VOLUME (m ³)	PREMIX QUANTITY (ton)	REMARKS
BROUGHT FORWARD:			-	-	-	63.18	4.74	10.90	
103	22/01/2008	0.96	1.00	0.65	0.08	0.65	0.05	0.11	L 731 - Jalan Arsat
104	"	0.96	1.00	0.65	0.08	0.65	0.05	0.11	L 731 - Jalan Arsat
105	"	0.96	1.00	0.65	0.08	0.65	0.05	0.11	L 731 - Jalan Arsat
106	"	0.96	0.95	0.65	0.08	0.62	0.05	0.11	L 731 - Jalan Arsat
107	"	0.97	1.00	0.70	0.08	0.70	0.05	0.12	L 731 - Jalan Arsat
108	"	0.97	1.00	0.70	0.08	0.70	0.05	0.12	L 731 - Jalan Arsat
109	"	0.97	1.00	0.70	0.08	0.70	0.05	0.12	L 731 - Jalan Arsat
110	"	0.97	1.00	0.70	0.08	0.70	0.05	0.12	L 731 - Jalan Arsat
111	"	0.97	1.00	0.70	0.08	0.70	0.05	0.12	L 731 - Jalan Arsat
112	"	0.54	0.89	0.73	0.08	0.65	0.05	0.11	L 731 - Jalan Arsat
113	"	0.54	0.87	0.69	0.08	0.60	0.05	0.10	L 731 - Jalan Arsat
114	"	1.10	1.00	0.71	0.08	0.71	0.05	0.12	L 731 - Jalan Arsat
115	"	1.10	0.71	0.60	0.08	0.43	0.03	0.07	L 731 - Jalan Arsat
116	"	1.10	0.71	0.65	0.08	0.46	0.03	0.08	L 731 - Jalan Arsat
117	23/01/2008	0.18	1.00	0.82	0.08	0.82	0.06	0.14	L 705 - Jalan Bebuloh
118	"	4.24	0.92	0.79	0.08	0.73	0.05	0.13	L 705 - Jalan Bebuloh
119	"	4.20	0.85	0.82	0.08	0.70	0.05	0.12	L 705 - Jalan Bebuloh
120	"	4.19	1.00	0.70	0.08	0.70	0.05	0.12	L 705 - Jalan Bebuloh
121	"	4.19	0.82	0.80	0.08	0.66	0.05	0.11	L 705 - Jalan Bebuloh
122	"	4.09	1.00	0.94	0.08	0.94	0.07	0.16	L 705 - Jalan Bebuloh
123	"	4.09	0.94	0.70	0.08	0.66	0.05	0.11	L 705 - Jalan Bebuloh
124	"	3.89	0.74	0.70	0.08	0.52	0.04	0.09	L 705 - Jalan Bebuloh
125	"	3.91	0.74	0.70	0.08	0.52	0.04	0.09	L 705 - Jalan Bebuloh
126	"	0.11	1.00	1.00	0.08	1.00	0.08	0.17	L 733 - Jalan Peny'bung Bg. Tanjung
127	"	0.11	1.00	1.00	0.08	1.00	0.08	0.17	L 733 - Jalan Peny'bung Bg. Tanjung
128	"	0.11	1.00	1.00	0.08	1.00	0.08	0.17	L 733 - Jalan Peny'bung Bg. Tanjung
129	"	0.11	1.00	1.00	0.08	1.00	0.08	0.17	L 733 - Jalan Peny'bung Bg. Tanjung
130	"	0.11	1.00	1.00	0.08	1.00	0.08	0.17	L 733 - Jalan Peny'bung Bg. Tanjung
131	"	0.11	1.00	0.80	0.08	0.80	0.06	0.14	L 733 - Jalan Peny'bung Bg. Tanjung
132	26/01/2008	7.06	0.50	0.50	0.08	0.25	0.02	0.04	L 705 - Jalan Bebuloh
133	"	4.19	0.38	0.35	0.08	0.13	0.01	0.02	L 705 - Jalan Bebuloh
134	"	7.30	0.48	0.42	0.08	0.20	0.02	0.03	L 705 - Jalan Bebuloh
135	"	6.04	0.70	0.60	0.08	0.42	0.03	0.07	L 705 - Jalan Bebuloh
136	"	6.46	0.70	0.60	0.08	0.42	0.03	0.07	L 705 - Jalan Bebuloh
137	"	3.23	0.60	0.53	0.08	0.32	0.02	0.05	L 705 - Jalan Bebuloh
TOTAL C/F :						85.87	6.44	14.81	

LINTASAN RESOURCES SDN. BHD.

MAINTENANCE OF FEDERAL ROADS - LABUAN, FT

R01 POTHOLE PATCHING RECORD

DISTRICT: W.P LABUAN

ROUTE NO. REFER TO REMARKS

ROAD NAME: REFER TO REMARKS

MONTH: JANUARY 2008

ITEM	DATE	CHAINAGE (KM)	Length (m)	Width (m)	Depth (m)	AREA (m2)	VOLUME (m3)	PREMIX QUANTITY (ton)	REMARKS
BROUGHT FORWARD:			-	-	-	85.87	6.44	14.81	
138	26/01/2008	3.24	0.53	0.50	0.08	0.27	0.02	0.05	L 705 - Jalan Bebuloh
139	"	0.41	1.00	1.00	0.08	1.00	0.08	0.17	L 700 - Jalan Patau-patau
140	"	0.41	1.00	1.00	0.08	1.00	0.08	0.17	L 700 - Jalan Patau-patau
141	28/01/2008	3.38	1.00	1.00	0.08	1.00	0.08	0.17	L 700 - Jalan Patau-patau
142	"	3.38	1.00	1.00	0.08	1.00	0.08	0.17	L 700 - Jalan Patau-patau
143	"	3.38	1.00	1.00	0.08	1.00	0.08	0.17	L 700 - Jalan Patau-patau
144	"	3.38	1.00	0.80	0.08	0.80	0.06	0.14	L 700 - Jalan Patau-patau
145	"	1.18	0.85	0.50	0.08	0.43	0.03	0.07	L 700 - Jalan Patau-patau
146	"	1.18	1.00	0.85	0.08	0.85	0.06	0.15	L 700 - Jalan Patau-patau
147	"	1.19	1.00	0.98	0.08	0.98	0.07	0.17	L 700 - Jalan Patau-patau
148	"	1.19	1.00	0.78	0.08	0.78	0.06	0.13	L 700 - Jalan Patau-patau
149	"	1.19	1.00	0.78	0.08	0.78	0.06	0.13	L 700 - Jalan Patau-patau
150	"	1.19	1.00	0.86	0.08	0.86	0.06	0.15	L 700 - Jalan Patau-patau
151	"	1.20	0.86	0.60	0.08	0.52	0.04	0.09	L 700 - Jalan Patau-patau
152	"	1.20	0.86	0.70	0.08	0.60	0.05	0.10	L 700 - Jalan Patau-patau
153	"	1.20	1.00	0.85	0.08	0.85	0.06	0.15	L 700 - Jalan Patau-patau
154	"	1.62	1.00	0.72	0.08	0.72	0.05	0.12	L 700 - Jalan Tun Mustapha
155	"	1.62	0.90	0.82	0.08	0.74	0.06	0.13	L 700 - Jalan Tun Mustapha
156	"	1.65	0.90	0.82	0.08	0.74	0.06	0.13	L 700 - Jalan Tun Mustapha
157	"	1.67	0.98	0.92	0.08	0.90	0.07	0.16	L 700 - Jalan Tun Mustapha
158	29/01/2008	3.65	0.89	0.60	0.08	0.53	0.04	0.09	L 706 - Jalan Ranchar-ranchar
159	"	3.65	0.89	0.60	0.08	0.53	0.04	0.09	L 706 - Jalan Ranchar-ranchar
160	"	3.65	0.45	0.40	0.08	0.18	0.01	0.03	L 706 - Jalan Ranchar-ranchar
161	"	3.66	0.80	0.60	0.08	0.48	0.04	0.08	L 706 - Jalan Ranchar-ranchar
162	"	3.66	0.80	0.60	0.08	0.48	0.04	0.08	L 706 - Jalan Ranchar-ranchar
163	"	3.07	1.00	0.90	0.08	0.90	0.07	0.16	L 706 - Jalan Ranchar-ranchar
164	"	3.07	1.00	0.90	0.08	0.90	0.07	0.16	L 706 - Jalan Ranchar-ranchar
165	"	3.07	0.80	0.76	0.08	0.61	0.05	0.10	L 706 - Jalan Ranchar-ranchar
166	"	3.07	0.76	0.70	0.08	0.53	0.04	0.09	L 706 - Jalan Ranchar-ranchar
167	"	3.40	1.00	0.74	0.08	0.74	0.06	0.13	L 706 - Jalan Ranchar-ranchar
168	"	3.40	0.74	0.70	0.08	0.52	0.04	0.09	L 706 - Jalan Ranchar-ranchar
169	"	3.32	1.00	0.68	0.08	0.68	0.05	0.12	L 706 - Jalan Ranchar-ranchar
170	"	3.32	0.75	0.68	0.08	0.51	0.04	0.09	L 706 - Jalan Ranchar-ranchar
TOTAL :						109.28	8.20	18.85	

DISTRICT : BEAUFORT
ROUTE NO : 502 JALAN BEAUFORT - MENUM BOK
LOCATION : CH4.290 (KM 4.290) - LHS

R01 CRACK SEALING



BEFORE



IN PROGRESS



AFTER

DISTRICT : BEAUFORT
ROUTE NO : 01 JALAN KOTA KINABALU - SINDUM IN
LOCATION : CH96.705 (KM 98.465) - RHS

R01 CRACK SEALING



BEFORE



IN PROGRESS



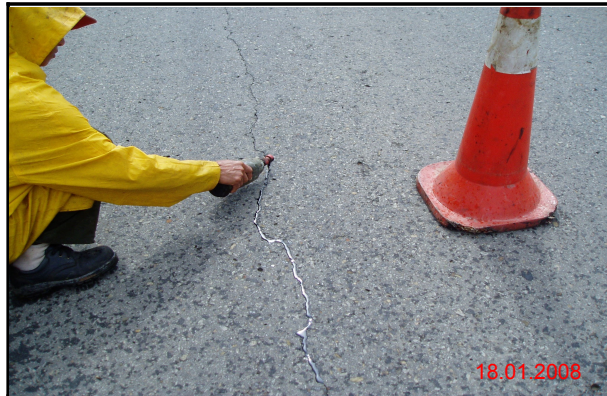
AFTER

DISTRICT : KOTA MARUDU
ROUTE NO : 01 - JALAN KOTA KINABALU - KUDAT
LOCATION : CH112.433

R01 CRACK SEALING



BEFORE



IN PROGRESS

LINTASAN RESOURCES SDN. BHD.
CRACK SEALING
GRAND SUMMARY

MONTH: JANUARY 2008

DISTRICT	ROUTE NO.	ROAD NAME	CRACK SEALING		
			Previous Month	Current Month	Cummulative
			(m)	(m)	(m)
Kota Belud	01	Jalan Kota Kinabalu-Kudat	0.00	0.00	0.00
Kota Marudu	01	Jalan Kota Kinabalu-Kudat	0.00	2.62	2.62
Kudat	01	Jalan Kota Kinabalu-Kudat	0.00	0.00	0.00
Tuaran	01	Jalan Kota Kinabalu-Kudat	0.00	0.00	0.00
	22	Jalan Kota Kinabalu-Sandakan	0.00	0.00	0.00
	503	Jalan Berungis-Kota Belud	0.00	0.00	0.00
Kota Kinabalu	01	Jalan Kota Kinabalu-Kudat	0.00	0.00	0.00
	01	Jalan Kota Kinabalu-Sindumin	0.00	0.00	0.00
	606	Jalan Susur Sepangar Bay	0.00	0.00	0.00
	607	Jalan Masuk Ke Pelabuhan Baru	0.00	0.00	0.00
	608	Jalan Masuk Ke Lapangan Terbang Lama	0.00	0.00	0.00
Penampang	01	Jalan Kota Kinabalu-Sindumin	0.00	0.00	0.00
	500	Jalan Kota Kinabalu-Keningau-Tenom	0.00	0.00	0.00
	501	Jalan Kota Kinabalu-Penampang-Lok Kawi	0.00	0.00	0.00
Papar	01	Jalan Kota Kinabalu-Sindumin	0.00	0.00	0.00
Ranau	22	Jalan Kota Kinabalu-Sandakan	0.00	0.00	0.00
Tambunam	500	Jalan Kota Kinabalu-Keningau-Tenom	0.00	109.60	109.60
Keningau	500	Jalan Kota Kinabalu-Keningau-Tenom	0.00	0.00	0.00
Tenom	500	Jalan Kota Kinabalu-Keningau-Tenom	0.00	0.00	0.00
Beaufort	01	Jalan Kota Kinabalu-Sindumin	0.00	318.85	318.85
	502	Jalan Beaufort-Menumbok	0.00	24.40	24.40
Sipitang	01	Jalan Kota Kinabalu-Sindumin	0.00	185.65	185.65
Kuala Penyu	502	Jalan Beaufort-Menumbok	0.00	15.30	15.30
TOTAL			0.00	656.42	656.42

LINTASAN RESOURCES SDN. BHD.
PRIVATISATION OF WEST COAST SABAH FEDERAL ROADS MAINTENANCE

SUMMARY - CRACK SEALING RECORD

Month : JANUARY 2008

ITEM	DISTRICT	ROUTE NO.	ROAD NAME	LENGTH (m)		
				PREVIOUS MONTH	CURRENT MONTH	CUM. MONTH
1	Beaufort	01	Jalan Kota Kinabalu - Sindumin	-	318.85	318.85
2	Beaufort	502	Jalan Beaufort - Menumbok	-	24.40	24.40
3	Sipitang	01	Jalan Kota Kinabalu - Sindumin	-	185.65	185.65
4	Kuala Penyu	502	Jalan Beaufort - Menumbok	-	15.30	15.30
TOTAL:				0.00	544.20	544.20

LINTASAN RESOURCES SDN. BHD.
MAINTENANCE OF FEDERAL ROADS - WEST COAST, SABAH
R01 CRACK SEALING RECORD

DISTRICT: BEAUFORT

ROUTE NO. 01

ROAD NAME: JALAN KK - SINDUMIN

MONTH: JANUARY 2008

ITEM	DATE	LOCATION (CH)	CRACK SEALING Length (m)	REMARKS
BROUGHT FORWARD :		-	0.00	-
1	22/01/2008	95.560	23.60	LHS
2	22/01/2008	95.572	25.00	LHS
3	22/01/2008	95.590	18.10	LHS
4	22/01/2008	95.606	21.50	LHS
5	22/01/2008	95.610	17.30	LHS
6	22/01/2008	95.621	14.30	LHS
7	22/01/2008	95.628	19.10	LHS
8	22/01/2008	95.635	13.30	LHS
9	22/01/2008	95.638	22.90	LHS
10	22/01/2008	95.641	27.60	LHS
11	22/01/2008	96.695	6.50	RHS
12	22/01/2008	96.700	13.20	RHS
13	22/01/2008	96.705	17.40	LHS
14	22/01/2008	96.705	14.45	RHS
15	22/01/2008	96.889	6.70	LHS
16	22/01/2008	96.890	10.10	RHS
17	22/01/2008	96.900	17.50	LHS
18	22/01/2008	96.996	14.20	LHS
19	22/01/2008	97.000	16.10	LHS
20				
21				
22				
23				
24				
25				
26				
27				
28				
29				
30				
CARRIED FORWARD:			318.85	

LINTASAN RESOURCES SDN. BHD.
MAINTENANCE OF FEDERAL ROADS - WEST COAST, SABAH
R01 CRACK SEALING RECORD

DISTRICT: SIPITANG

ROUTE NO. 01

ROAD NAME: JALAN KK - SINDUMIN

MONTH: JANUARY 2008

ITEM	DATE	LOCATION (CH)	CRACK SEALING Length (m)	REMARKS
BROUGHT FORWARD :		-	0.00	-
1	25/01/2008	140.292	11.65	LHS
2	31/01/2008	154.260	20.10	LHS
3	31/01/2008	154.263	24.00	LHS
4	31/01/2008	154.270	15.00	LHS
5	31/01/2008	154.273	19.00	LHS
6	31/01/2008	154.281	37.00	LHS
7	31/01/2008	154.292	12.10	LHS
8	31/01/2008	154.300	15.20	LHS
9	31/01/2008	154.310	14.00	LHS
10	31/01/2008	154.315	17.60	LHS
11				
12				
13				
14				
15				
16				
17				
18				
19				
20				
21				
22				
23				
24				
25				
26				
27				
28				
29				
30				
CARRIED FORWARD:			185.65	

LINTASAN RESOURCES SDN. BHD.
 MAINTENANCE OF FEDERAL ROADS - WEST COAST, SABAH
R01 CRACK SEALING RECORD

DISTRICT: BEAUFORT

ROUTE NO. 502

ROAD NAME: JALAN BEAUFORT - MENUMBOK

MONTH: JANUARY 2008

ITEM	DATE	LOCATION (CH)	CRACK SEALING Length (m)	REMARKS
BROUGHT FORWARD :		-	0.00	-
1	19/01/2008	2.578	18.80	LHS
2	19/01/2008	4.290	5.60	LHS
3				
4				
5				
6				
7				
8				
9				
10				
11				
12				
13				
14				
15				
16				
17				
18				
19				
20				
21				
22				
23				
24				
25				
26				
27				
28				
29				
30				
CARRIED FORWARD:			24.40	

LINTASAN RESOURCES SDN. BHD.
PRIVATISATION OF WEST COAST SABAH FEDERAL ROADS MAINTENANCE

SUMMARY - CRACK SEALING RECORD

Month : JANUARY 2008

ITEM	DISTRICT	ROUTE NO.	ROAD NAME	LENGTH (m)		
				PREVIOUS MONTH	CURRENT MONTH	CUM. MONTH
1	TAMBUNAN	500	Jalan Kota Kinabalu - Keningau - Tenom	-	109.60	109.60
2	KENINGAU	500	Jalan Kota Kinabalu - Keningau - Tenom	-	-	-
3	TENOM	500	Jalan Kota Kinabalu - Keningau - Tenom	-	-	-
TOTAL:				-	109.60	109.60

LINTASAN RESOURCES SDN. BHD.
 MAINTENANCE OF FEDERAL ROADS - WEST COAST, SABAH
R01 CRACK SEALING RECORD

DISTRICT: TAMBUNAN

ROUTE NO. 500

ROAD NAME: JLN K. KINABALU - KENINGAU - TENOM

MONTH: January 2008

ITEM	DATE	LOCATION (CH)	CRACK SEALING Length (m)	REMARKS
BROUGHT FORWARD:			0.00	
1	1/11/2008	51.350	16.40	LHS
2	1/11/2008	51.362	4.00	RHS
3	1/11/2008	51.372	7.00	RHS
4	1/11/2008	51.375	28.00	LHS
5	1/11/2008	53.866	22.20	LHS
6	1/11/2008	53.911	13.00	LHS
7	1/11/2008	53.953	4.20	LHS
8	1/11/2008	54.745	6.00	LHS
9	1/11/2008	54.750	8.80	LHS
10				
11				
12				
13				
14				
15				
16				
17				
18				
19				
20				
21				
22				
23				
24				
25				
26				
27				
28				
29				
30				
TOTAL			109.60	

LINTASAN RESOURCES SDN. BHD.
PRIVATISATION OF WEST COAST SABAH FEDERAL ROADS MAINTENANCE

SUMMARY - CRACK SEALING RECORD

MONTH: JANUARY 2008

ITEM	DISTRICT	ROUTE NO.	ROAD NAME	LENGTH (m)		
				PREVIOUS MONTH	CURRENT MONTH	CUM. MONTH
1	KOTA BELUD	01	JALAN KOTA KINABALU - KUDAT	-	0.00	-
2	KOTA MARUDU	01	JALAN KOTA KINABALU - KUDAT	-	262.00	262.00
3	KUDAT	01	JALAN KOTA KINABALU - KUDAT	-	0.00	-
TOTAL:				0.00	262.00	262.00

DISTRICT : KOTA KINABALU
ROUTE NO : 501 JLN KK-PENAMPANG-LOK KAWI
LOCATION : CH0.539 (LHS-QEH Traffic Lights)

R01 PAVER BLOCK



BEFORE



IN PROGRESS



AFTER

LINTASAN RESOURCES SDN. BHD.
PRIVATISATION OF WEST COAST SABAH FEDERAL ROADS MAINTENANCE

SUMMARY - PAVING BLOCK RECORD

Month: January 2008

ITEM	DISTRICT	ROUTE NO.	ROAD NAME	AREA (m ²)		
				PREVIOUS MONTH	CURRENT MONTH	CUM. MONTH
1	Kota Kinabalu	501	Jalan Kota Kinabalu - Penampang - Lok Kawi	-	9.64	9.64
TOTAL				-	9.64	9.64

DISTRICT : KUALA PENYU
ROUTE NO : 502 JALAN BEAUFORT - MENUMBOK
LOCATION : CH45.890 (KM 45.890) - LHS

R01 PAVEMENT TREATMENT



BEFORE



IN PROGRESS



AFTER

DISTRICT : TAMBUNAN
ROUTE NO : 500- JALAN KOTA KINABALU - KENINGAU - TEI
LOCATION : CH 98.975/KM 108.875 @ RHS

R01 PAVEMENT TREATMENT



B E F O R E



I N P R O G R E S S



A F T E R

LINTASAN RESOURCES SDN. BHD.
PAVEMENT TREATMENT
GRAND SUMMARY

MONTH: JANUARY 2008

DISTRICT	ROUTE NO.	ROAD NAME	Previous Month	Current Month	Cummulative
			(m ²)	(m ²)	(m ²)
Kota Belud	01	Jalan Kota Kinabalu-Kudat	0.00	0.00	0.00
Kota Marudu	01	Jalan Kota Kinabalu-Kudat	0.00	0.00	0.00
Kudat	01	Jalan Kota Kinabalu-Kudat	0.00	0.00	0.00
Tuaran	01	Jalan Kota Kinabalu-Kudat	0.00	0.00	0.00
	22	Jalan Kota Kinabalu-Sandakan	0.00	0.00	0.00
	503	Jalan Berungis-Kota Belud	0.00	0.00	0.00
Kota Kinabalu	01	Jalan Kota Kinabalu-Kudat	0.00	0.00	0.00
	01	Jalan Kota Kinabalu-Sindumin	0.00	0.00	0.00
	606	Jalan Susur Sepangar Bay	0.00	0.00	0.00
	607	Jalan Masuk Ke Pelabuhan Baru	0.00	0.00	0.00
	608	Jalan K Masuk Ke Lapangan Terbang Lama	0.00	0.00	0.00
Penampang	01	Jalan Kota Kinabalu-Sindumin	0.00	0.00	0.00
	500	Jalan Kota Kinabalu-Keningau-Tenom	0.00	0.00	0.00
	501	Jalan Kota Kinabalu-Penampang-Lok Kawi	0.00	0.00	0.00
Papar	01	Jalan Kota Kinabalu-Sindumin	0.00	0.00	0.00
Ranau	22	Jalan Kota Kinabalu-Sandakan	0.00	0.00	0.00
Tambunam	500	Jalan Kota Kinabalu-Keningau-Tenom	0.00	191.64	191.64
Keningau	500	Jalan Kota Kinabalu-Keningau-Tenom	0.00	0.00	0.00
Tenom	500	Jalan Kota Kinabalu-Keningau-Tenom	0.00	0.00	0.00
Beaufort	01	Jalan Kota Kinabalu-Sindumin	0.00	31.33	31.33
	502	Jalan Beaufort-Menumbok	0.00	34.10	34.10
Sipitang	01	Jalan Kota Kinabalu-Sindumin	0.00	0.00	0.00
Kuala Penyu	502	Jalan Beaufort-Menumbok	0.00	48.13	48.13
TOTAL			0.00	305.20	305.20

LINTASAN RESOURCES SDN. BHD.
MAINTENANCE OF FEDERAL ROADS - WEST COAST, SABAH

SUMMARY - PAVEMENT TREATMENT RECORD

Month: JANUARY 2008

ITEM	DISTRICT	ROUTE NO.	ROAD NAME	AREA (m ²)		
				PREVIOUS MONTH	CURRENT MONTH	CUM. MONTH
1	Beaufort	01	Jalan Kota Kinabalu - Sindumin	-	31.33	31.33
2	Sipitang	01	Jalan Kota Kinabalu - Sindumin	-	-	-
3	Beaufort	502	Jalan Beaufort - Menumbok	-	34.10	34.10
4	Kuala Penyu	502	Jalan Beaufort - Menumbok	-	48.13	48.13
TOTAL				-	113.56	113.56

LINTASAN RESOURCES SDN. BHD.
MAINTENANCE OF FEDERAL ROADS - WEST COAST, SABAH

R01 PAVEMENT TREATMENT RECORD

DISTRICT: BEAUFORT

ROUTE NO. 01

ROAD NAME: JLN KK-SINDUMIN

MONTH: JANUARY 2008

ITEM	DATE	LOCATION (CH)	LENGTH (m)	WIDTH (m)	AREA (m ²)	REMARKS
BROUGHT FORWARD:					0.00	
1	22/01/2008	95.546	6.40	1.00	6.40	LHS
2	22/01/2008	95.550	7.20	1.00	7.20	LHS
3	22/01/2008	95.600	2.30	0.90	2.07	RHS
4	22/01/2008	95.605	2.20	0.80	1.76	RHS
5	22/01/2008	95.928	3.00	1.00	3.00	LHS
6	22/01/2008	96.891	2.00	0.40	0.80	LHS
7	22/01/2008	96.892	5.00	0.50	2.50	LHS
8	22/01/2008	96.895	5.20	0.60	3.12	LHS
9	22/01/2008	97.002	3.20	1.40	4.48	LHS
10						
11						
12						
13						
14						
15						
16						
17						
18						
19						
20						
21						
22						
23						
24						
25						
26						
27						
28						
29						
30						
TOTAL:					31.33	

LINTASAN RESOURCES SDN. BHD.
 MAINTENANCE OF FEDERAL ROADS - WEST COAST, SABAH

R01 PAVEMENT TREATMENT RECORD

DISTRICT: BEAUFORT

ROUTE NO. 502

ROAD NAME: JLN BEAUFORT - MENUMBOK

MONTH: JANUARY 2008

ITEM	DATE	LOCATION (CH)	LENGTH (m)	WIDTH (m)	AREA (m ²)	REMARKS
BROUGHT FORWARD:					0.00	
1	19/01/2008	4.290	5.40	1.10	5.94	LHS
2	19/01/2008	2.600	5.10	1.20	6.12	LHS
3	19/01/2008	2.590	8.90	1.20	10.68	LHS
4	19/01/2008	0.500	8.80	1.00	8.80	LHS
5	19/01/2008	0.495	3.20	0.80	2.56	LHS
6						
7						
8						
9						
10						
11						
12						
13						
14						
15						
16						
17						
18						
19						
20						
21						
22						
23						
24						
25						
26						
27						
28						
29						
30						
TOTAL:					34.10	

LINTASAN RESOURCES SDN. BHD.
MAINTENANCE OF FEDERAL ROADS - WEST COAST, SABAH

SUMMARY - PAVEMENT TREATMENT RECORD

Month : JANUARY 2008

ITEM	DISTRICT	ROUTE NO.	ROAD NAME	AREA (m ²)		
				PREVIOUS MONTH	CURRENT MONTH	CUM. MONTH
1	TAMBUNAN	500	Jalan Kota Kinabalu - Keningau - Tenom	-	191.64	191.64
2	KENINGAU	500	Jalan Kota Kinabalu - Keningau - Tenom	-	-	-
3	TENOM	500	Jalan Kota Kinabalu - Keningau - Tenom	-	-	-
TOTAL				-	191.64	191.64

LINTASAN RESOURCES SDN. BHD.
MAINTENANCE OF FEDERAL ROADS - WEST COAST, SABAH

R01 PAVEMENT TREATMENT RECORD

DISTRICT: TAMBUNAN

ROUTE NO. 500

ROAD NAME: JLN KOTA KINABALU -KENINGAU-TENOM

MONTH: January 2008

ITEM	DATE	LOCATION (CH)	LENGTH (m)	WIDTH (m)	AREA (m ²)	REMARKS
BROUGHT FORWARD:					0.00	
1	1/7/2008	47.503	3.60	1.00	3.60	Crocodile crack/LHS
2	1/7/2008	47.513	3.80	1.20	4.56	Crocodile crack/LHS
3	1/7/2008	47.519	5.70	1.30	7.41	Crocodile crack/LHS
4	1/7/2008	47.529	2.50	1.00	2.50	Crocodile crack/LHS
5	1/9/2008	98.929	2.05	0.70	1.44	Crocodile crack/LHS
6	1/9/2008	98.933	4.02	0.70	2.81	Crocodile crack/LHS
7	1/9/2008	98.955	4.00	0.70	2.80	Crocodile crack/LHS
8	1/9/2008	98.960	5.07	0.60	3.04	Crocodile crack/LHS
9	1/9/2008	98.975	22.04	0.80	17.63	Crocodile crack/RHS
10	1/9/2008	98.977	12.07	0.70	8.45	Crocodile crack/RHS
11	1/9/2008	99.031	21.03	0.70	14.72	Crocodile crack/RHS
12	1/11/2008	47.555	2.80	1.00	2.80	Crocodile crack/LHS
13	1/11/2008	47.565	2.90	0.90	2.61	Crocodile crack/RHS
14	1/11/2008	47.574	1.50	1.00	1.50	Crocodile crack/RHS
15	1/11/2008	54.100	4.40	1.70	7.48	Crocodile crack/LHS
16	1/11/2008	54.109	2.80	1.70	4.76	Crocodile crack/LHS
17	1/11/2008	54.115	9.50	1.30	12.35	Crocodile crack/LHS
18	1/11/2008	54.140	8.50	1.20	10.20	Crocodile crack/LHS
19	1/11/2008	54.150	16.60	1.50	24.90	Crocodile crack/LHS
20	1/11/2008	54.145	3.80	1.00	3.80	Crocodile crack/LHS
21	1/11/2008	54.172	6.50	1.40	9.10	Crocodile crack/LHS
22	1/11/2008	54.187	6.30	1.40	8.82	Crocodile crack/LHS
23	1/11/2008	54.193	2.60	1.70	4.42	Crocodile crack/LHS
24	1/11/2008	54.758	6.40	1.30	8.32	Crocodile crack/LHS
25	1/11/2008	54.800	8.10	1.40	11.34	Crocodile crack/LHS
26	1/11/2008	55.205	4.40	1.00	4.40	Crocodile crack/LHS
27	1/11/2008	55.213	2.80	0.90	2.52	Crocodile crack/LHS
28	1/11/2008	55.214	2.90	0.80	2.32	Crocodile crack/LHS
29	1/11/2008	55.234	1.30	0.80	1.04	Crocodile crack/LHS
30						
TOTAL :					191.64	

LINTASAN RESOURCES SDN. BHD.
MAINTENANCE OF FEDERAL ROADS - W.P.LABUAN

SUMMARY - PAVEMENT TREATMENT RECORD

Month : JANUARY 2008

ITEM	DISTRICT	ROUTE NO.	ROAD NAME	AREA (m ²)		
				PREVIOUS MONTH	CURRENT MONTH	CUM. MONTH
1	W.P.LABUAN	L 703	JALAN OKK DAUD	-	30.00	30.00
2	W.P.LABUAN	L 706	JALAN RANCHA-RANCHA	-	40.00	40.00
3	W.P.LABUAN	L 712	JALAN PAHLAWAN	-	45.00	45.00
4	W.P.LABUAN	L 722	JALAN RANCHA-RANCHA LAMA	-	30.00	30.00
5	W.P.LABUAN	L 743	JALAN KOMPLEKS SUKAN	-	42.00	42.00
6	W.P.LABUAN	L 753	JALAN TENAGA	-	49.50	49.50
TOTAL				-	236.50	236.50

LINTASAN RESOURCES SDN. BHD.
 MAINTENANCE OF FEDERAL ROADS - W.P LABUAN

R01 PAVEMENT TREATMENT RECORD

DISTRICT: W.P LABUAN

ROUTE NO. L 712

ROAD NAME: JALAN PAHLAWAN

MONTH: JANUARY 2008

ITEM	DATE	LOCATION (KM)	LENGTH (m)	WIDTH (m)	AREA (m ²)	REMARKS
BROUGHT FORWARD:					0.00	
1	02/01/2008	0.13	30.00	1.50	45.00	
2						
3						
4						
5						
6						
7						
8						
9						
10						
11						
12						
13						
14						
15						
16						
17						
18						
19						
20						
21						
22						
23						
24						
25						
26						
27						
28						
29						
30						
TOTAL:					45.00	

LINTASAN RESOURCES SDN. BHD.
 MAINTENANCE OF FEDERAL ROADS - W.P LABUAN

R01 PAVEMENT TREATMENT RECORD

DISTRICT: W.P LABUAN

ROUTE NO. L 743

ROAD NAME: JALAN KOMPLEKS SUKAN

MONTH: JANUARY 2008

ITEM	DATE	LOCATION (KM)	LENGTH (m)	WIDTH (m)	AREA (m ²)	REMARKS
BROUGHT FORWARD:					0.00	
1	03/01/2008	0.75	12.00	1.50	18.00	
2	"	0.77	12.00	2.00	24.00	
3						
4						
5						
6						
7						
8						
9						
10						
11						
12						
13						
14						
15						
16						
17						
18						
19						
20						
21						
22						
23						
24						
25						
26						
27						
28						
29						
30						
TOTAL:					42.00	

LINTASAN RESOURCES SDN. BHD.
 MAINTENANCE OF FEDERAL ROADS - W.P LABUAN

R01 PAVEMENT TREATMENT RECORD

DISTRICT: W.P LABUAN

ROUTE NO. L 703

ROAD NAME: JALAN OKK DAUD

MONTH: JANUARY 2008

ITEM	DATE	LOCATION (KM)	LENGTH (m)	WIDTH (m)	AREA (m ²)	REMARKS
BROUGHT FORWARD:					0.00	
1	11/01/2008	3.32	20.00	1.50	30.00	
2						
3						
4						
5						
6						
7						
8						
9						
10						
11						
12						
13						
14						
15						
16						
17						
18						
19						
20						
21						
22						
23						
24						
25						
26						
27						
28						
29						
30						
TOTAL:					30.00	

LINTASAN RESOURCES SDN. BHD.
 MAINTENANCE OF FEDERAL ROADS - W.P LABUAN

R01 PAVEMENT TREATMENT RECORD

DISTRICT: W.P LABUAN

ROUTE NO. L 706

ROAD NAME: JALAN RANCHA-RANCHA

MONTH: JANUARY 2008

ITEM	DATE	LOCATION (KM)	LENGTH (m)	WIDTH (m)	AREA (m ²)	REMARKS
BROUGHT FORWARD:					0.00	
1	17/01/2008	0.31	40.00	1.00	40.00	
2						
3						
4						
5						
6						
7						
8						
9						
10						
11						
12						
13						
14						
15						
16						
17						
18						
19						
20						
21						
22						
23						
24						
25						
26						
27						
28						
29						
30						
TOTAL:					40.00	

LINTASAN RESOURCES SDN. BHD.
 MAINTENANCE OF FEDERAL ROADS - W.P LABUAN

R01 PAVEMENT TREATMENT RECORD

DISTRICT: W.P LABUAN

ROUTE NO. L 722

ROAD NAME: JALAN RANCHA-RANCHA LAMA

MONTH: JANUARY 2008

ITEM	DATE	LOCATION (KM)	LENGTH (m)	WIDTH (m)	AREA (m ²)	REMARKS
BROUGHT FORWARD:					0.00	
1	17/01/2008	0.80	20.00	1.50	30.00	
2						
3						
4						
5						
6						
7						
8						
9						
10						
11						
12						
13						
14						
15						
16						
17						
18						
19						
20						
21						
22						
23						
24						
25						
26						
27						
28						
29						
30						
TOTAL:					30.00	

LINTASAN RESOURCES SDN. BHD.
 MAINTENANCE OF FEDERAL ROADS - W.P LABUAN

R01 PAVEMENT TREATMENT RECORD

DISTRICT: W.P LABUAN

ROUTE NO. L 753

ROAD NAME: JALAN TENAGA

MONTH: JANUARY 2008

ITEM	DATE	LOCATION (KM)	LENGTH (m)	WIDTH (m)	AREA (m ²)	REMARKS
BROUGHT FORWARD:					0.00	
1	29/01/2008	0.57	33.00	1.50	49.50	
2						
3						
4						
5						
6						
7						
8						
9						
10						
11						
12						
13						
14						
15						
16						
17						
18						
19						
20						
21						
22						
23						
24						
25						
26						
27						
28						
29						
30						
TOTAL:					49.50	