

R 01

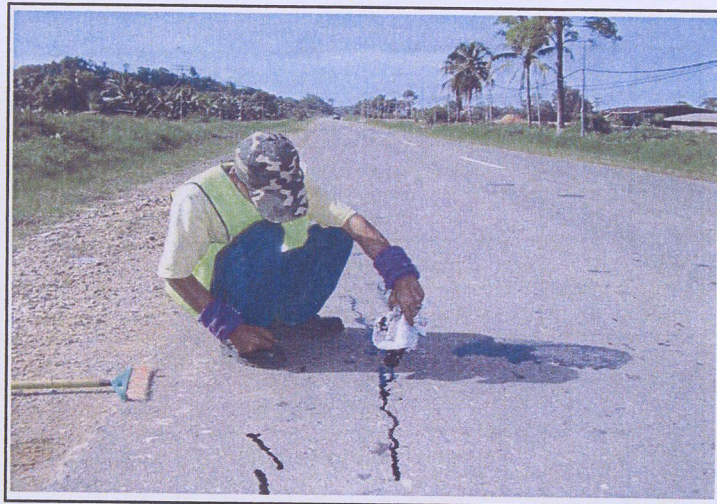
**PENYENGGARAAN
PERMUKAAN JALAN
(POTHOLE PATCHING)**

DISTRICT : BEAUFORT
ROUTE NO : 01 JALAN KOTA KINABALU - SINDUMIN
LOCATION : CH98.795 (KM100.555) - LHS

SEALING OF CRACKS



BEFORE



IN PROGRESS



AFTER

LINTASAN RESOURCES SDN. BHD.
PAVEMENT REPAIR (SEALING OF CRACKS)
GRAND SUMMARY

MONTH: NOVEMBER 2004

R01 - PAVEMENT REPAIR					
DISTRICT	ROUTE NO	ROAD NAME	SEALING OF CRACKS		
			Previous Mth	Current Mth	Cuumulative
			(m)	(m)	(m)
Kota Belud	01	Jalan Kota Kinabalu-Kudat	773.79	1,237.00	2,010.79
Kota Marudu	01	Jalan Kota Kinabalu-Kudat	956.00	0.00	956.00
Kudat	01	Jalan Kota Kinabalu-Kudat	0.00	75.00	75.00
Tuaran	01	Jalan Kota Kinabalu-Kudat	0.00	0.00	0.00
	22	Jalan Kota Kinabalu-Sandakan	0.00	0.00	0.00
	503	Jalan Berungis-Kota Belud	0.00	0.00	0.00
Kota Kinabalu	01	Jalan Kota Kinabalu-Kudat	423.44	0.00	423.44
	01	Jalan Kota Kinabalu-Sindumin	0.00	0.00	0.00
	606	Jalan Susur Sepangar Bay	0.00	0.00	0.00
	607	Jalan Masuk Ke Pelabuhan Baru	0.00	0.00	0.00
	608	Jalan Masuk ke Lapangan Terbang Lama	180.30	0.00	180.30
Penampang	01	Jalan Kota Kinabalu-Sindumin	2,348.80	0.00	2,348.80
	500	Jalan Kota Kinabalu-Keningau-Tenom	0.00	0.00	0.00
	501	Jalan Kota Kinabalu-Penampang-Lokkawi	0.00	0.00	0.00
Papar	01	Jalan Kota Kinabalu-Sindumin	1,691.60	0.00	1,691.60
Ranau	22	Jalan Kota Kinabalu-Sandakan	0.00	0.00	0.00
Tambunan	500	Jalan Kota Kinabalu-Keningau-Tenom	* 822.40	761.77	1,584.17
Keningau	500	Jalan Kota Kinabalu-Keningau-Tenom	* 597.90	0.00	597.90
Tenom	500	Jalan Kota Kinabalu-Keningau-Tenom	* 193.30	0.00	193.30
Beaufort	01	Jalan Kota Kinabalu-Sindumin	1,341.29	87.20	1,428.49
	502	Jalan Beaufort-Menumbok	0.00	0.00	0.00
Sipitang	01	Jalan Kota Kinabalu-Sindumin	2,634.32	0.00	2,634.32
Kuala Penyu	502	Jalan Beaufort-Menumbok	0.00	0.00	0.00
TOTAL			11,963.14	2,160.97	14,124.11

* Note: The brought forward balances from previous month were not reported previously.

LINTASAN RESOURCES SDN BHD (566483-H)
 PRIVATISATION OF WEST COAST SABAH FEDERAL ROADS MAINTENANCE

SUMMARY FOR R01 - SEALING OF CRACK RECORD

Ending Period : 30th November 2004

ITEM	DISTRICT	ROUTE NO.	ROADNAME	LENGTH (M)		
				PREVIOUS MONTH	CURRENT MONTH	CUM. MONTH
1	KOTA BELUD	01	Jalan Kota Kinabalu - Kudat	773.79	1,237.00	2,010.79
2	KOTA MARUDU	01	Jalan Kota Kinabalu - Kudat	956.00	-	956.00
3	KUDAT	01	Jalan Kota Kinabalu - Kudat	-	75.00	75.00
TOTAL :				1,729.79	1,312.00	3,041.79

LINTASAN RESOURCES SDN BHD (566483-H)
PRIVATISATION OF WEST COAST SABAH FEDERAL ROADS MAINTENANCE

SUMMARY FOR R01 - SEALING OF CRACK RECORD

Ending Period : 30th November 2004

ITEM	DISTRICT	ROUTE NO.	ROAD NAME	LENGTH (m)		
				PREVIOUS MONTH	CURRENT MONTH	CUM. MONTH
WEST COAST (NORTH)						
1	Kota Kinabalu	01	Jalan Kota Kinabalu - Kudat	423.44	-	423.44
2	Tuaran	01	Jalan Kota Kinabalu - Kudat	-	-	-
3	Tuaran	22	Jalan Kota Kinabalu - Sandakan	-	-	-
4	Tuaran	503	Jalan Berungis - Kota Belud	-	-	-
5	Kota Kinabalu	606	Jalan Susur Sepangar Bay	-	-	-
6	Kota Kinabalu	607	Jalan Masuk ke Pelabuhan Baru, K.K.	-	-	-
TOTAL:				423.44	-	423.44
WEST COAST (SOUTH)						
1	Kota Kinabalu	01	Jalan Kota Kinabalu - Sindumin	-	-	-
2	Penampang	01	Jalan Kota Kinabalu - Sindumin	2,348.80	-	2,348.80
3	Papar	01	Jalan Kota Kinabalu - Sindumin	1,691.60	-	1,691.60
4	Penampang	500	Jalan Kota Kinabalu - Keningau - Tenom	-	-	-
5	Penampang	501	Jalan Kota Kinabalu - Penampang - Lok Kawi	-	-	-
6	Kota Kinabalu	608	Jalan masuk ke Lapangan Terbang Lama, K.K.	180.30	-	180.30
TOTAL:				-	-	4,220.70
TOTAL LENGTH OF CRACK SEALED FOR (NORTH + SOUTH) =				423.44	-	4,644.14

LINTASAN RESOURCES SDN BHD (566483-H)
 PRIVATISATION OF WEST COAST SABAH FEDERAL ROADS MAINTENANCE

SUMMARY FOR R01 - SEALING OF CRACK RECORD

Ending Period : 30th November 2004

ITEM	DISTRICT	ROUTE NO.	ROAD NAME	LENGTH (m)		
				PREVIOUS MONTH	CURRENT MONTH	CUM. MONTH
KENINGAU CENTRE						
1	Tambunan	500	Jalan Kota Kinabalu - Keningau - Tenom	822.40	761.77	1,584.17
2	Keningau	500	Jalan Kota Kinabalu - Keningau - Tenom	597.90	0.00	597.90
3	Tenom	500	Jalan Kota Kinabalu - Keningau - Tenom	193.30	0.00	193.30
TOTAL LENGTH OF CRACK SEALED				1,613.60	761.77	2,375.37

LINTASAN RESOURCES SDN BHD ⁽⁵⁶⁶⁴⁸³⁻¹¹⁾
 PRIVATISATION OF WEST COAST SABAH FEDERAL ROADS MAINTENANCE

SUMMARY FOR R01 - SEALING OF CRACK RECORD

Ending Period : 30th November 2004

ITEM	DISTRICT	ROUTE NO.	ROAD NAME	LENGTH (m)		
				PREVIOUS MONTH	CURRENT MONTH	CUM. MONTH
1	Beaufort	01	Jalan Kota Kinabalu - Sindumin	1,341.29	87.20	1,428.49
2	Beaufort	502	Jalan Beaufort-Menumbok	-	-	-
3	Sipitang	01	Jalan Kota Kinabalu - Sindumin	2,634.32	-	2,634.32
4	Kuala Penyu	502	Jalan Beaufort-Menumbok	-	-	-
TOTAL LENGTH OF CRACK SEALED =				3,975.61	87.20	4,062.81

DISTRICT : PENAMPANG
ROUTE NO : 501 JALAN KK-PENAMPANG-LOK KAWI
LOCATION : CH0.500

R01 PAVING BLOCK



Picture No: 22114/13742

BEFORE



Picture No: 22114/13743

IN PROGRESS



Picture No: 22114/13741

AFTER

LINTASAN RESOURCES SDN BHD (566483-H)
PRIVATISATION OF WEST COAST SABAH FEDERAL ROADS MAINTENANCE

SUMMARY FOR R01 - REPAIR TO PAVING BLOCKS RECORD

Ending Period : 30th November 2004

ITEM	DISTRICT	ROUTE NO.	ROADNAME	AREA (m ²)		
				PREVIOUS MONTH	CURRENT MONTH	CUM. MONTH
1	Penampang	501	Jalan Kota Kinabalu - Penampang - Lok-Kawi	145.43	14.37	159.80
TOTAL				145.43	14.37	159.80

DISTRICT : KUDAT
ROUTE NO : 01-JALAN KOTA KINABALU - KUDAT
LOCATION : CH163.382

R01 PAVEMENT



Film Batch No: PB230027

BEFORE



Film Batch No: PB230031

IN PROGRESS



Film Batch No: PB230035

AFTER

DISTRICT : TUARAN
ROUTE NO : 01 JALAN KOTA KINABALU-KUDAT
LOCATION : KM25.250 (LHS)

R01 PAVEMENT



Picture No: 23114/002

BEFORE



Picture No: 23114/003

IN PROGRESS



Picture No: 23114/005

AFTER

DISTRICT : BEAUFORT
ROUTE NO : 502 JALAN BEAUFORT - MENUMBOK
LOCATION : CH6.285 (KM6.285) - RHS

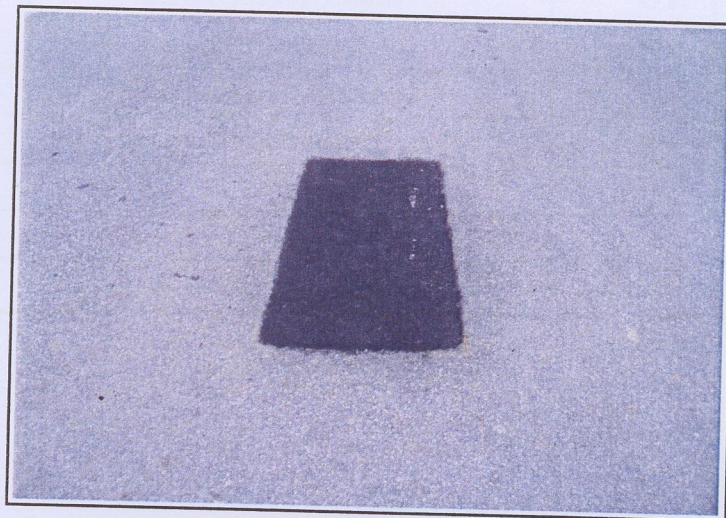
R01 PAVEMENT



BEFORE



IN PROGRESS



AFTER

LINTASAN RESOURCES SDN. BHD.
PAVEMENT REPAIR (POTHOLE PATCHING)
GRAND SUMMARY

MONTH: NOVEMBER 2004

R01 - PAVEMENT REPAIR					
DISTRICT	ROUTE NO	ROAD NAME	PREMIX FOR POTHOLE		
			Previous Mth	Current Mth	Cuumulative
			(ton)	(Ton)	(Ton)
Kota Belud	01	Jalan Kota Kinabalu-Kudat	207.83	22.32	230.15
Kota Marudu	01	Jalan Kota Kinabalu-Kudat	11.02	0.00	11.02
Kudat	01	Jalan Kota Kinabalu-Kudat	10.80	0.00	10.80
Tuaran	01	Jalan Kota Kinabalu-Kudat	483.57	58.19	541.76
	22	Jalan Kota Kinabalu-Sandakan	102.88	14.35	117.23
	503	Jalan Berungis-Kota Belud	16.79	3.10	19.89
Kota Kinabalu	01	Jalan Kota Kinabalu-Kudat	578.17	63.34	641.51
	01	Jalan Kota Kinabalu-Sindumin	17.52	0.73	18.25
	606	Jalan Susur Sepangar Bay	55.64	21.68	77.32
	607	Jalan Masuk Ke Pelabuhan Baru	2.42	0.00	2.42
	608	Jalan Masuk ke Lapangan Terbang Lama	9.27	0.00	9.27
Penampang	01	Jalan Kota Kinabalu-Sindumin	25.97	4.59	30.56
	500	Jalan Kota Kinabalu-Keningau-Tenom	324.33	110.90	435.23
	501	Jalan Kota Kinabalu-Penampang-Lokkawi	156.97	3.24	160.21
Papar	01	Jalan Kota Kinabalu-Sindumin	446.61	59.26	505.87
Ranau	22	Jalan Kota Kinabalu-Sandakan	607.16	77.51	684.67
Tambunan	500	Jalan Kota Kinabalu-Keningau-Tenom	95.66	3.58	99.24
Keningau	500	Jalan Kota Kinabalu-Keningau-Tenom	6.07	0.28	6.35
Tenom	500	Jalan Kota Kinabalu-Keningau-Tenom	4.20	0.00	4.20
Beaufort	01	Jalan Kota Kinabalu-Sindumin	43.81	0.60	44.41
	502	Jalan Beaufort-Menumbok	39.27	3.17	42.44
Sipitang	01	Jalan Kota Kinabalu-Sindumin	31.49	0.16	31.65
Kuala Penyu	502	Jalan Beaufort-Menumbok	16.41	0.00	16.41
TOTAL			3,293.86	447.00	3,740.86

LINTASAN RESOURCES SDN BHD (566483-H)
 PRIVATISATION OF WEST COAST SABAH FEDERAL ROADS MAINTENANCE

SUMMARY FOR R01 - POTHoles PATCHING RECORD

Ending Period : 30th November 2004

ITEM	DISTRICT	ROUTE NO.	ROADNAME	AREA (m ²)		PREMIX QUANTITY (TON)			INVENTORY CARRIAGEWAY ESTIMATE QTY (m ²)
				PREVIOUS MONTH	CURRENT MONTH	PREVIOUS MONTH	CURRENT MONTH	CUM. MONTH	
1	KOTA BELUD	01	Jalan Kota Kinabalu - Kudat	1,721.13	186.34	207.83	22.32	230.15	313,971.000
2	KOTA MARUDU	01	Jalan Kota Kinabalu - Kudat	91.15	-	11.02	-	11.02	180,993.00
3	KUDAT	01	Jalan Kota Kinabalu - Kudat	89.91	-	10.80	-	10.80	308,338.00
TOTAL				1,902.19	186.34	229.65	22.32	251.97	803,302.00

LINTASAN RESOURCES SDN BHD (566483-H)
PRIVATISATION OF WEST COAST SABAH FEDERAL ROADS MAINTENANCE

SUMMARY FOR R01 - POTHoles PATCHING RECORD

Ending Period : 30th November 2004

ITEM	DISTRICT	ROUTE NO.	ROAD NAME	AREA (m ²)		PREMIX QUANTITY (TON)			
				PREVIOUS MONTH	CURRENT MONTH	CUM. MONTH	PREVIOUS MONTH	CURRENT MONTH	CUM. MONTH
WEST COAST (NORTH)									
1	Kota Kinabalu	01	Jalan Kota Kinabalu - Kudat	4,129.93	539.55	4,669.48	578.17	63.34	641.51
2	Tuaran	01	Jalan Kota Kinabalu - Kudat	3,366.61	480.18	3,846.79	483.57	58.19	541.76
3	Tuaran	22	Jalan Kota Kinabalu - Sandakan	756.37	109.09	865.46	102.88	14.35	117.23
4	Tuaran	503	Jalan Berungis - Kota Belud	106.11	25.91	132.02	16.79	3.10	19.89
5	Kota Kinabalu	606	Jalan Susur Sepangar Bay	325.55	171.80	497.35	55.64	21.68	77.32
6	Kota Kinabalu	607	Jalan Masuk ke Pelabuhan Baru, K.K.	16.94	-	16.94	2.42	-	2.42
TOTAL:				8,701.51	1,326.53	10,028.04	1,239.47	160.66	1,400.13
WEST COAST (SOUTH)									
1	Kota Kinabalu	01	Jalan Kota Kinabalu - Sindumin	121.14	6.06	127.20	17.52	0.73	18.25
2	Penampang	01	Jalan Kota Kinabalu - Sindumin	207.28	27.41	234.69	25.97	4.59	30.56
3	Papar	01	Jalan Kota Kinabalu - Sindumin	3,285.78	494.46	3,780.24	446.61	59.26	505.87
4	Penampang	500	Jalan Kota Kinabalu - Keningau - Tenom	2,012.29	767.28	2,779.57	324.33	110.90	435.23
5	Penampang	501	Jalan Kota Kinabalu - Penampang - Lok Kawi	987.20	27.27	1,014.47	156.97	3.24	160.21
6	Kota Kinabalu	608	Jalan masuk ke Lapangan Terbang Lama, K.K.	70.31	-	70.31	9.27	-	9.27
TOTAL:				6,684.00	1,322.48	8,006.48	980.67	178.72	1,159.39
TOTAL FOR (NORTH + SOUTH) =				15,385.51	2,649.01	18,034.52	2,220.14	339.38	2,559.52

LINTASAN RESOURCES SDN BHD (566483-H)
 PRIVATISATION OF WEST COAST SABAH FEDERAL ROADS MAINTENANCE

SUMMARY FOR R01 - POTHLES PATCHING RECORD

Ending Period : 30th November 2004

ITEM	DISTRICT	ROUTE NO.	ROADNAME	AREA (m ²)		PREMIX QUANTITY (TON)		
				PREVIOUS MONTH	CURRENT MONTH	PREVIOUS MONTH	CURRENT MONTH	CUM. MONTH
1	Ranau	22	Jalan Kota Kinabalu - Sandakan	2,944.19	531.36	607.16	77.51	684.67
TOTAL				2,944.19	531.36	607.16	77.51	684.67

LINTASAN RESOURCES SDN BHD (566483-H)
 PRIVATISATION OF WEST COAST SABAH FEDERAL ROADS MAINTENANCE

SUMMARY FOR R01 - POTHOLE PATCHING RECORD

Ending Period : 30 NOVEMBER 2004

ITEM	DISTRICT	ROUTE NO.	ROADNAME	AREA (m ²)		PREMIX QUANTITY (TON)		INVENTORY CARRIAGEWAY ESTIMATE QTY (m2)		
				PREVIOUS MONTH	CURRENT MONTH	PREVIOUS MONTH	CUM. MONTH		CURRENT MONTH	CUM. MONTH
1	Tambunan	500	Jalan Kota Kinabalu - Keningau - Tenom	707.95	29.35	95.66	737.30	3.58	99.24	398,552.47
2	Keningau	500	Jalan Kota Kinabalu - Keningau - Tenom	46.63	1.58	6.07	48.21	0.28	6.35	278,055.67
3	Tenom	500	Jalan Kota Kinabalu - Keningau - Tenom	31.79	0.00	4.20	31.79	0.00	4.20	179,227.77
TOTAL				786.37	30.93	105.93	817.30	3.86	109.79	855,835.91

LINTASAN RESOURCES SDN BHD (566483-H)
 PRIVATISATION OF WEST COAST SABAH FEDERAL ROADS MAINTENANCE

SUMMARY FOR R01 - POTHLES PATCHING RECORD

Ending Period : 30th November 2004

ITEM	DISTRICT	ROUTE NO.	ROADNAME	AREA (m ²)		PREMIX QUANTITY (TON)	
				PREVIOUS MONTH	CURRENT MONTH	PREVIOUS MONTH	CURRENT MONTH
1	Beaufort	01	Jalan Kota Kinabalu - Sindumin	349.95	5.02	43.81	0.60
2	Beaufort	502	Jalan Beaufort-Menumbok	323.79	26.69	39.27	3.17
3	Sipitang	01	Jalan Kota Kinabalu - Sindumin	260.53	1.40	31.49	0.16
4	Kuala Penyu	502	Jalan Beaufort-Menumbok	136.88	0.00	16.41	0.00
TOTAL				1,071.15	33.11	130.98	3.93
						1,104.26	134.91

DISTRICT : TAMBUNAN
ROUTE NO : 500 JALAN KOTA KINABALU-KENINGAU-TENOM
LOCATION : CH82.800

R01 PAVEMENT



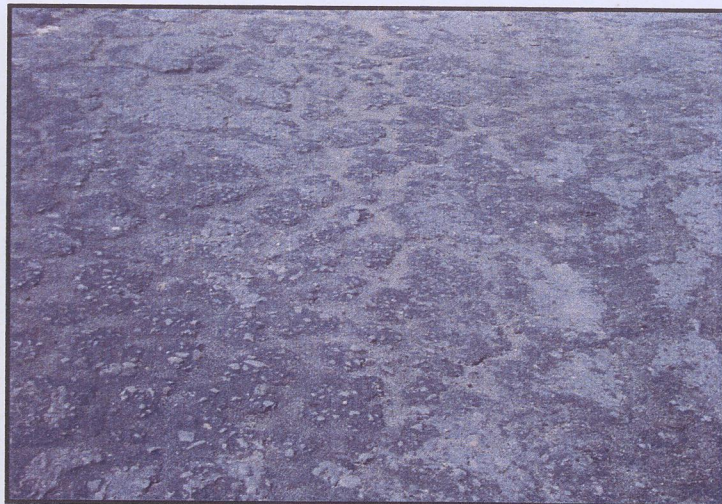
Film Batch No: R01-1104-01

BEFORE



Film Batch No: R01-1104-02

IN PROGRESS



Film Batch No: R01-1104-03

AFTER

DISTRICT : TAMBUNAN
ROUTE NO : 500 JALAN KOTA KINABALU-KENINGAU-TENOM
LOCATION : CH82.850

R01 PAVEMENT



Film Batch No: R01-1104-04

BEFORE



Film Batch No: R01-1104-05

IN PROGRESS



Film Batch No: R01-1104-06

AFTER

LINTASAN RESOURCES SDN BHD (566483-H)
 PRIVATISATION OF WEST COAST SABAH FEDERAL ROADS MAINTENANCE

SUMMARY FOR R01 - SEALING OF CRACK RECORD

Ending Period : 30th November 2004

ITEM	DISTRICT	ROUTE NO.	ROADNAME	LENGTH (M)		
				PREVIOUS MONTH	CURRENT MONTH	CUM. MONTH
1	KOTA BELUD	01	Jalan Kota Kinabalu - Kudat	773.79	1,237.00	2,010.79
2	KOTA MARUDU	01	Jalan Kota Kinabalu - Kudat	956.00	-	956.00
3	KUDAT	01	Jalan Kota Kinabalu - Kudat	-	75.00	75.00
TOTAL :				1,729.79	1,312.00	3,041.79