

R 01

**PENYENGGARAAN
PERMUKAAN JALAN
(POTHOLE PATCHING)**

DISTRICT : KOTA BELUD
ROUTE NO : 01-JALAN KOTA KINABALU-KUDAT
LOCATION : CH 70.790

R01 PAVEMENT



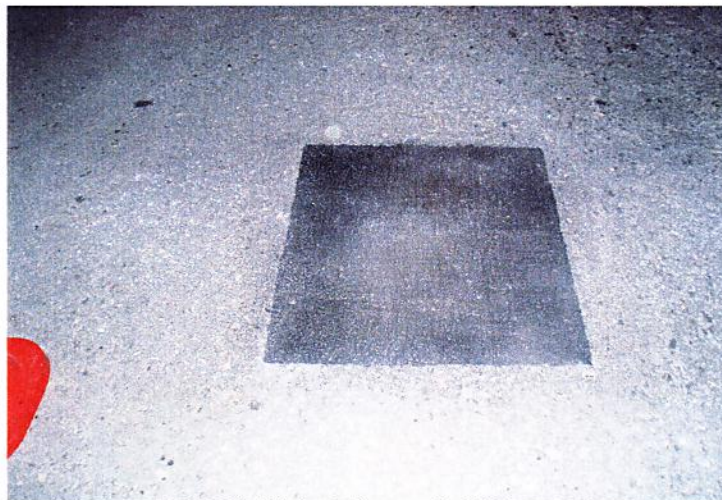
Film Batch No: P1010039

BEFORE



Film Batch No: P1010040

IN PROGRESS



Film Batch No: P1010042

AFTER

DISTRICT : KOTA BELUD
ROUTE NO : 01-JALAN KOTA KINABALU-KUDAT
LOCATION : CH 70.740

R01 PAVEMENT



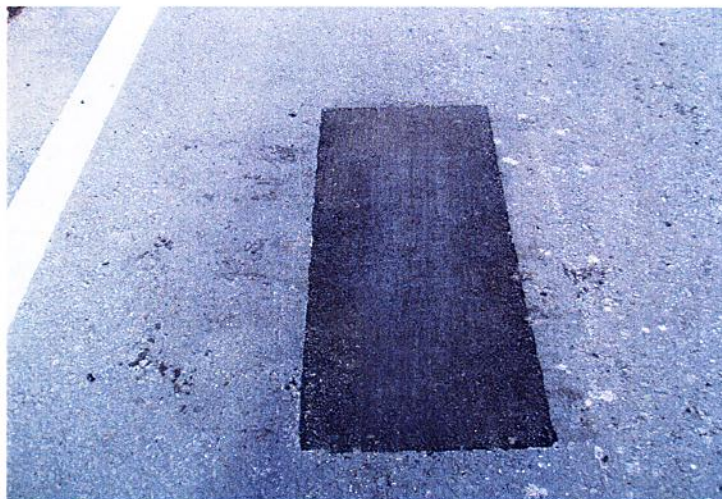
Film Batch No: P1010034

BEFORE



Film Batch No: P1010036

IN PROGRESS

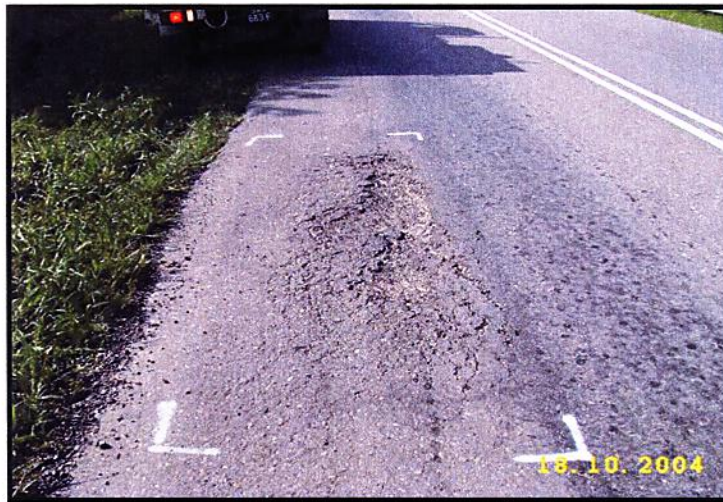


Film Batch No: P1010038

AFTER

DISTRICT : TAMBUNAN
ROUTE NO : 500 JALAN KOTA KINABALU-KENINGAU-TENOM
LOCATION : CH97.100 (RHS)

R01 PAVEMENT



Film Batch No: R01-2210-028

BEFORE



Film Batch No: R01-2210-032

IN PROGRESS

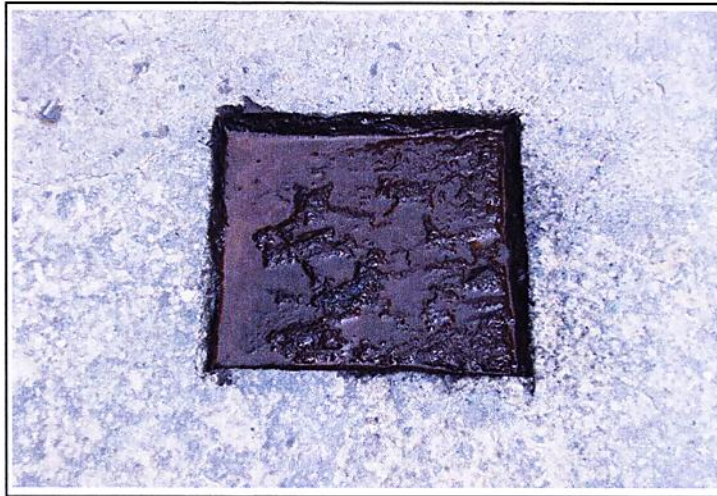


Film Batch No: R01-2210-037

AFTER

DISTRICT : SIPITANG
ROUTE NO : 01 JALAN KOTA KINABALU - SINDUMIN
LOCATION : CH139.584 (KM141.344) - RHS

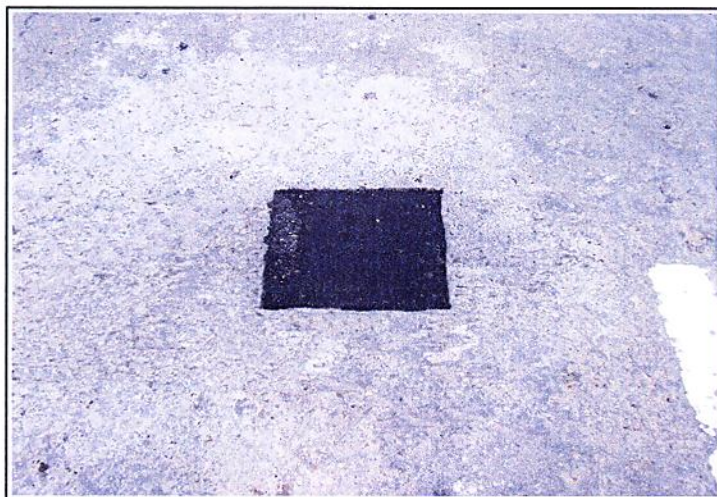
R01 PAVEMENT



BEFORE



IN PROGRESS



AFTER

DISTRICT : KUALA PENYU
ROUTE NO : 502 JALAN BEAUFORT - MENUMBOK
LOCATION : CH58.200 (KM58.200) - RHS

R01 PAVEMENT



BEFORE



IN PROGRESS



AFTER

LINTASAN RESOURCES SDN BHD
PAVEMENT REPAIR (POTHOLE PATCHING)
GRAND SUMMARY

MONTH: OCTOBER 2004

R01 - PAVEMENT REPAIR					
DISTRICT	ROUTE NO	ROAD NAME	PREMIX FOR POTHOLE		
			Previous Mth	Current Mth	Cuumulative
			(ton)	(Ton)	(Ton)
Kota Belud	01	Jalan Kota Kinabalu-Kudat	192 20	15 63	207 83
Kota Marudu	01	Jalan Kota Kinabalu-Kudat	11 02	0 00	11 02
Kudat	01	Jalan Kota Kinabalu-Kudat	10 12	0 68	10 80
Tuaran	01	Jalan Kota Kinabalu-Kudat	453 08	30 49	483 57
	22	Jalan Kota Kinabalu-Sandakan	99 90	2 98	102 88
	503	Jalan Berungis-Kota Belud	16 79	0 00	16 79
Kota Kinabalu	01	Jalan Kota Kinabalu-Kudat	538 31	39 86	578 17
	01	Jalan Kota Kinabalu-Sindumin	14 75	2 77	17 52
	606	Jalan Susur Sepangar Bay	49 41	6 23	55 64
	607	Jalan Masuk Ke Pelabuhan Baru	2 42	0 00	2 42
	608	Jalan Masuk ke Lapangan Terbang Lama	8 65	0 62	9 27
Penampang	01	Jalan Kota Kinabalu-Sindumin	20 27	5 70	25 97
	500	Jalan Kota Kinabalu-Keningau-Tenom	291 01	33 32	324 33
	501	Jalan Kota Kinabalu-Penampang-Lokkawi	148 50	8 47	156 97
Papar	01	Jalan Kota Kinabalu-Sindumin	421 93	24 68	446 61
Ranau	22	Jalan Kota Kinabalu-Sandakan	538 87	68 29	607 16
Tambunan	500	Jalan Kota Kinabalu-Keningau-Tenom	92 69	2 97	95 66
Keningau	500	Jalan Kota Kinabalu-Keningau-Tenom	5 35	1 42	6 77
Tenom	500	Jalan Kota Kinabalu-Keningau-Tenom	5 13	0 74	5 87
Beaufort	01	Jalan Kota Kinabalu-Sindumin	43 21	0 60	43 81
	502	Jalan Beaufort-Menumbok	39 27	0 00	39 27
Sipitang	01	Jalan Kota Kinabalu-Sindumin	30 99	0 50	31 49
Kuala Penyu	502	Jalan Beaufort-Menumbok	16 06	0 35	16 41
TOTAL			3,049.93	246.30	3,296.23

LINTASAN RESOURCES SDN BHD (566483-H)
 PRIVATISATION OF WEST COAST SABAH FEDERAL ROADS MAINTENANCE

SUMMARY FOR R01 - POTHOLE PATCHING RECORD

Ending Period : 31 October 2004

ITEM	DISTRICT	ROUTE NO.	ROADNAME	AREA (m ²)		PREMIX QUANTITY (TON)			INVENTORY CARRIAGEWAY ESTIMATE QTY (m ²)	
				PREVIOUS MONTH	CURRENT MONTH	CUM. MONTH	PREVIOUS MONTH	CURRENT MONTH		CUM. MONTH
1	KOTA BELUD	01	Jalan Kota Kinabalu - Kudat	1,591.02	130.11	1,721.13	192.20	15.63	207.83	313,971 000
2	KOTA MARUDU	01	Jalan Kota Kinabalu - Kudat	91.15	-	91.15	11.02	-	11.02	180,993.00
3	KUDAT	01	Jalan Kota Kinabalu - Kudat	84.25	5.66	89.91	10.12	0.68	10.80	308,338 00
TOTAL				1,766.42	135.77	1,902.19	213.34	16.31	229.65	803,302.00

LINTASAN RESOURCES SDN BHD (566483-H)
PRIVATISATION OF WEST COAST SABAH FEDERAL ROADS MAINTENANCE

SUMMARY FOR R01 - POTHoles PATCHING RECORD

Ending Period : 31th October 2004

ITEM	DISTRICT	ROUTE NO.	ROAD NAME	AREA (m ²)			PREMIX QUANTITY (TON)			
				PREVIOUS MONTH	CURRENT MONTH	CUM. MONTH	PREVIOUS MONTH	CURRENT MONTH	CUM. MONTH	
WEST COAST (NORTH)										
1	Kota Kinabalu	01	Jalan Kota Kinabalu - Kudat	3,820.34	309.59	4,129.93	538.31	39.86	578.17	
2	Tuaran	01	Jalan Kota Kinabalu - Kudat	3,151.36	215.25	3,366.61	453.08	30.49	483.57	
3	Tuaran	22	Jalan Kota Kinabalu - Sandakan	731.62	24.75	756.37	99.90	2.98	102.88	
4	Tuaran	503	Jalan Berungis - Kota Belud	106.11	-	106.11	16.79	-	16.79	
5	Kota Kinabalu	606	Jalan Susur Sepangar Bay	282.21	43.34	325.55	49.41	6.23	55.64	
6	Kota Kinabalu	607	Jalan Masuk ke Pelabuhan Baru, K K	16.94	-	16.94	2.42	-	2.42	
TOTAL:				8,108.58	592.93	8,701.51	1,159.91	79.56	1,239.47	
WEST COAST (SOUTH)										
1	Kota Kinabalu	01	Jalan Kota Kinabalu - Sindumin	98.57	22.57	121.14	14.75	2.77	17.52	
2	Penampang	01	Jalan Kota Kinabalu - Sindumin	163.64	43.64	207.28	20.27	5.70	25.97	
3	Papar	01	Jalan Kota Kinabalu - Sindumin	3,102.94	182.84	3,285.78	421.93	24.68	446.61	
4	Penampang	500	Jalan Kota Kinabalu - Keningau - Tenom	1,847.06	165.23	2,012.29	291.01	33.32	324.33	
5	Penampang	501	Jalan Kota Kinabalu - Penampang - Lok Kawi	938.21	48.99	987.20	148.50	8.47	156.97	
6	Kota Kinabalu	608	Jalan masuk ke Lapangan Terbang Lama, K K	66.89	3.42	70.31	8.65	0.62	9.27	
TOTAL:				6,217.31	466.69	6,684.00	905.11	75.56	980.67	
TOTAL FOR (NORTH + SOUTH) =				14,325.89	1,059.62	15,385.51	2,065.02	155.12	2,220.14	

LINTASAN RESOURCES SDN BHD (566483-H)
 PRIVATISATION OF WEST COAST SABAH FEDERAL ROADS MAINTENANCE

SUMMARY FOR R01 - POTHoles PATCHING RECORD

Ending Period : 31st October 2004

ITEM	DISTRICT	ROUTE NO.	ROADNAME	AREA (m ²)		PREMIX QUANTITY (TON)		
				PREVIOUS MONTH	CURRENT MONTH	PREVIOUS MONTH	CURRENT MONTH	CUM. MONTH
1	Ranau	22	Jalan Kota Kinabalu - Sandakan	2,602.65	341.54	538.87	68.29	607.16
TOTAL				2,602.65	341.54	538.87	68.29	607.16

LINTASAN RESOURCES SDN BHD (566483-H)
 PRIVATISATION OF WEST COAST SABAH FEDERAL ROADS MAINTENANCE

SUMMARY FOR R01 - POTHOLES PATCHING RECORD

Ending Period : 30 OCTOBER 2004

ITEM	DISTRICT	ROUTE NO.	ROADNAME	AREA (m ²)		PREMIX QUANTITY (TON)			INVENTORY CARRIAGEWAY ESTIMATE QTY (m2)	
				PREVIOUS MONTH	CURRENT MONTH	CUM. MONTH	PREVIOUS MONTH	CURRENT MONTH		CUM. MONTH
1	Tambunan	500	Jalan Kota Kinabalu - Keningau - Tenom	687.91	20.04	707.95	92.69	2.97	95.66	398,552.47
2	Keningau	500	Jalan Kota Kinabalu - Keningau - Tenom	43.44	8.97	52.41	5.35	1.42	6.77	278,055.67
3	Tenom	500	Jalan Kota Kinabalu - Keningau - Tenom	48.78	5.98	54.76	5.13	0.74	5.87	179,227.77
TOTAL				780.14	34.99	815.13	103.18	5.13	108.31	855,835.91

LINTASAN RESOURCES SDN BHD (566483-H)
 PRIVATISATION OF WEST COAST SABAH FEDERAL ROADS MAINTENANCE

SUMMARY FOR R01 - POTHOLES PATCHING RECORD

Ending Period : 31st October 2004

ITEM	DISTRICT	ROUTE NO.	ROADNAME	AREA (m ²)		PREMIX QUANTITY (TON)		
				PREVIOUS MONTH	CURRENT MONTH	PREVIOUS MONTH	CURRENT MONTH	CUM. MONTH
1	Beaufort	01	Jalan Kota Kinabalu - Sindumin	344.93	5.02	43.21	0.60	43.81
2	Beaufort	502	Jalan Beaufort-Menumbok	323.79	0.00	39.27	0.00	39.27
3	Sipitang	01	Jalan Kota Kinabalu - Sindumin	256.40	4.13	30.99	0.50	31.49
4	Kuala Penyu	502	Jalan Beaufort-Menumbok	133.79	3.09	16.06	0.35	16.41
TOTAL				1,058.91	12.24	129.53	1.45	130.98

LINTASAN RESOURCES SDN BHD (566483-H)
PRIVATISATION OF WEST COAST SABAH FEDERAL ROADS MAINTENANCE

SUMMARY FOR R01 - REPAIR TO PAVING BLOCKS RECORD

Ending Period : 31st October 2004

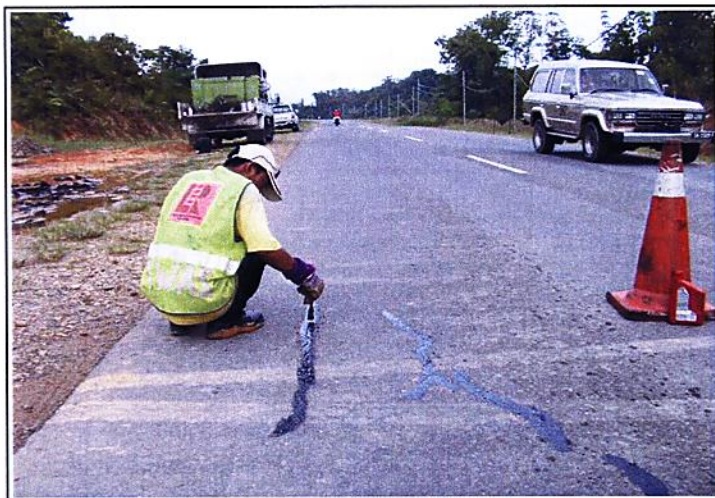
ITEM	DISTRICT	ROUTE NO.	ROADNAME	AREA (m ²)		
				PREVIOUS MONTH	CURRENT MONTH	CUM. MONTH
1	Penampang	501	Jalan Kota Kinabalu - Penampang - Lok Kawi	133.47	11.96	145.43
TOTAL				133.47	11.96	145.43

DISTRICT : BEAUFORT
ROUTE NO : 01 JALAN KOTA KINABALU - SINDUMIN
LOCATION : CH96.800 (KM98.560) - LHS

SEALING OF CRACKS



BEFORE



IN PROGRESS



AFTER

LINTASAN RESOURCES SDN BHD
PAVEMENT REPAIR (SEALING OF CRACKS)
GRAND SUMMARY

MONTH: OCTOBER 2004

R01 - PAVEMENT REPAIR					
DISTRICT	ROUTE NO	ROAD NAME	SEALING OF CRACKS		
			Previous Mth	Current Mth	Cuumulative
			(m)	(m)	(m)
Kota Belud	01	Jalan Kota Kinabalu-Kudat	773.79	0.00	773.79
Kota Marudu	01	Jalan Kota Kinabalu-Kudat	956.00	0.00	956.00
Kudat	01	Jalan Kota Kinabalu-Kudat	0.00	0.00	0.00
Tuaran	01	Jalan Kota Kinabalu-Kudat	0.00	0.00	0.00
	22	Jalan Kota Kinabalu-Sandakan	0.00	0.00	0.00
	503	Jalan Berungis-Kota Belud	0.00	0.00	0.00
Kota Kinabalu	01	Jalan Kota Kinabalu-Kudat	423.44	0.00	423.44
	01	Jalan Kota Kinabalu-Sindumin	0.00	0.00	0.00
	606	Jalan Susur Sepangar Bay	0.00	0.00	0.00
	607	Jalan Masuk Ke Pelabuhan Baru	0.00	0.00	0.00
	608	Jalan Masuk ke Lapangan Terbang Lama	180.30	0.00	180.30
Penampang	01	Jalan Kota Kinabalu-Sindumin	2,348.80	0.00	2,348.80
	500	Jalan Kota Kinabalu-Keningau-Tenom	0.00	0.00	0.00
	501	Jalan Kota Kinabalu-Penampang-Lokkawı	0.00	0.00	0.00
Papar	01	Jalan Kota Kinabalu-Sindumin	1,691.60	0.00	1,691.60
Ranau	22	Jalan Kota Kinabalu-Sandakan	0.00	0.00	0.00
Tambunan	500	Jalan Kota Kinabalu-Keningau-Tenom	0.00	0.00	0.00
Keningau	500	Jalan Kota Kinabalu-Keningau-Tenom	0.00	0.00	0.00
Tenom	500	Jalan Kota Kinabalu-Keningau-Tenom	0.00	0.00	0.00
Beaufort	01	Jalan Kota Kinabalu-Sindumin	1,008.54	332.75	1,341.29
	502	Jalan Beaufort-Menumbok	0.00	0.00	0.00
Sipitang	01	Jalan Kota Kinabalu-Sindumin	2,634.32	0.00	2,634.32
Kuala Penyu	502	Jalan Beaufort-Menumbok	0.00	0.00	0.00
TOTAL			10,016.79	332.75	10,349.54

* Note: The brought forward balances from previous month were not reported previously.

LINTASAN RESOURCES SDN BHD (566483-H)
 PRIVATISATION OF WEST COAST SABAH FEDERAL ROADS MAINTENANCE

SUMMARY FOR R01 - SEALING OF CRACK RECORD

Ending Period : 31th October 2004

ITEM	DISTRICT	ROUTE NO.	ROADNAME	LENGTH (M)		
				PREVIOUS MONTH	CURRENT MONTH	CUM. MONTH
1	KOTA BELUD	01	Jalan Kota Kinabalu - Kudat	773 79	-	773 79
2	KOTA MARUDU	01	Jalan Kota Kinabalu - Kudat	956 00	-	956 00
3	KUDAT	01	Jalan Kota Kinabalu - Kudat	-	-	-
TOTAL :				1,729.79	-	1,729.79

LINTASAN RESOURCES SDN BHD (566485-H)
PRIVATISATION OF WEST COAST SABAH FEDERAL ROADS MAINTENANCE

SUMMARY FOR R01 - SEALING OF CRACK RECORD

Ending Period : 31st October 2004

ITEM	DISTRICT	ROUTE NO.	ROAD NAME	LENGTH (m)		
				PREVIOUS MONTH	CURRENT MONTH	CUM. MONTH
WEST COAST (NORTH)						
1	Kota Kinabalu	01	Jalan Kota Kinabalu - Kudat	423 44	-	423 44
2	Tuaran	01	Jalan Kota Kinabalu - Kudat	-	-	-
3	Tuaran	22	Jalan Kota Kinabalu - Sandakan	-	-	-
4	Tuaran	503	Jalan Berungis - Kota Belud	-	-	-
5	Kota Kinabalu	606	Jalan Susur Sepangar Bay	-	-	-
6	Kota Kinabalu	607	Jalan Masuk ke Pelabuhan Baru, K K	-	-	-
TOTAL:				423.44	-	423.44
WEST COAST (SOUTH)						
1	Kota Kinabalu	01	Jalan Kota Kinabalu - Sindumin	-	-	-
2	Penampang	01	Jalan Kota Kinabalu - Sindumin	2,348 80	-	2,348 80
3	Papar	01	Jalan Kota Kinabalu - Sindumin	1,691 60	-	1,691 60
4	Penampang	500	Jalan Kota Kinabalu - Keningau - Tenom	-	-	-
5	Penampang	501	Jalan Kota Kinabalu - Penampang - Lok Kawi	-	-	-
6	Kota Kinabalu	608	Jalan masuk ke Lapangan Terbang Lama, K K	180 30	-	180 30
TOTAL:				-	-	4,220.70
TOTAL LENGTH OF CRACK SEALED FOR (NORTH + SOUTH) =				423.44	-	4,644.14

LINTASAN RESOURCES SDN BHD (566483-H)
 PRIVATISATION OF WEST COAST SABAH FEDERAL ROADS MAINTENANCE

SUMMARY FOR R01 - SEALING OF CRACK RECORD

Ending Period : 31st October 2004

ITEM	DISTRICT	ROUTE NO.	ROAD NAME	LENGTH (m)		
				PREVIOUS MONTH	CURRENT MONTH	CUM. MONTH
1	Beaufort	01	Jalan Kota Kinabalu - Sindumin	1,008.54	332.75	1,341.29
2	Beaufort	502	Jalan Beaufort-Menumbok	-	-	-
3	Sipitang	01	Jalan Kota Kinabalu - Sindumin	2,634.32	-	2,634.32
4	Kuala Penyu	502	Jalan Beaufort-Menumbok	-	-	-
TOTAL LENGTH OF CRACK SEALED =				3,642.86	332.75	3,975.61