

**PENSWASTAAN PENYENGGARAAN
JALAN-JALAN PERSEKUTUAN DI SABAH
(PANTAI BARAT & PENDALAMAN)**



THE GOVERNMENT OF MALAYSIA

LAPORAN KEMAJUAN BULANAN

OGOS 2004



Jabatan Kerja Raya, Negeri Sabah

Kontraktor : Lintasan Resources Sdn. Bhd. 566483-H

R 01

**PENYENGGARAAN
PERMUKAAN JALAN
(POTHOLE PATCHING)**

DISTRICT : KOTA BELUD
ROUTE NO : 01-JALAN KOTA KINABALU-KUDAT
LOCATION : CH104.570

R01 PAVEMENT



Film Batch No: P8250019

BEFORE



Film Batch No: P8250024

IN PROGRESS



Film Batch No: P8250025

AFTER

DISTRICT : KOTA MARUDU
ROUTE NO : 01-JALAN KOTA KINABALU-KUDAT
LOCATION : CH117.570

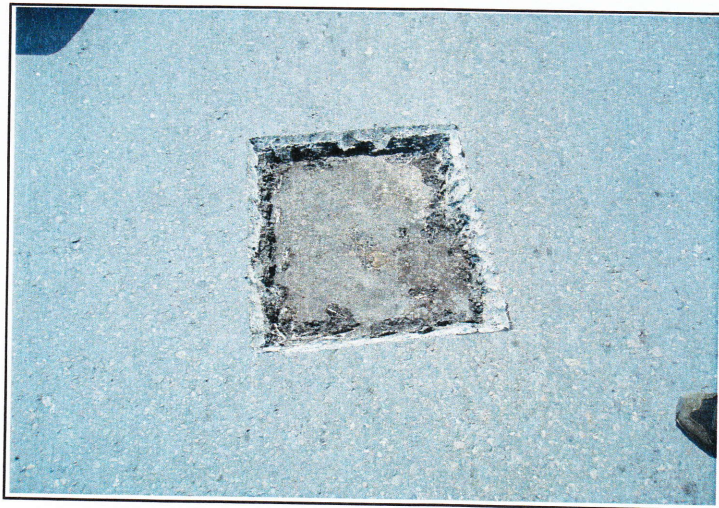
R01 PAVEMENT



Film Batch No: P8170001

6

BEFORE



Film Batch No: P8170002

5

IN PROGRESS



Film Batch No: P8170003

5

AFTER

16

R01 PAVEMENT

Film Batch No: 1202/7



BEFORE

Film Batch No: 1202/8



IN PROGRESS

Film Batch No: 1202/9



AFTER

R01: PAVEMENT

FILM BATCH NO: 4693/4



BEFORE

FILM BATCH NO: 4693/5



IN PROGRESS

FILM BATCH NO: 4693/7



AFTER

DISTRICT : SIPITANG
ROUTE NO : 01 JALAN KOTA KINABALU - SINDUMIN
LOCATION : CH139.545 (KM141.305) - RHS

R01 PAVEMENT



13

BEFORE



14

IN PROGRESS



15

AFTER

17

DISTRICT : SIPITANG
ROUTE NO : 01 JALAN KOTA KINABALU - SINDUMIN
LOCATION : CH156.300 (KM158.060) - RHS

SEALING OF CRACKS



BEFORE



IN PROGRESS



AFTER

16

17

18

19

LINTASAN RESOURCES SDN. BHD.
PAVEMENT REPAIR (POTHOLE PATCHING)
GRAND SUMMARY

MONTH: AUGUST 2004

R01 - PAVEMENT REPAIR					
DISTRICT	ROUTE NO.	ROAD NAME	PREMIX FOR POTHOLE		
			Previous Mth	Current Mth	Cummulative
			(Ton)	(Ton)	(Ton)
Kota Belud	01	Jalan Kota Kinabalu-Kudat	162.54	14.69	177.23
Kota Marudu	01	Jalan Kota Kinabalu-Kudat	7.55	0.81	8.36
Kudat	01	Jalan Kota Kinabalu-Kudat	10.12	0.00	10.12
Tuaran	01	Jalan Kota Kinabalu-Kudat	396.58	26.02	422.60
	22	Jalan Kota Kinabalu-Sandakan	94.44	3.23	97.67
	503	Jalan Berungis-Kota Belud	16.38	0.00	16.38
Kota Kinabalu	01	Jalan Kota Kinabalu-Kudat	471.68	31.89	503.57
	01	Jalan Kota Kinabalu-Sindumin	13.51	1.24	14.75
	606	Jalan Susur Sepangar Bay	48.46	0.95	49.41
	607	Jalan Masuk Ke Pelabuhan Baru	2.42	0.00	2.42
	608	Jalan K Masuk Ke Lapangan Terbang Lama	5.27	3.20	8.47
Penampang	01	Jalan Kota Kinabalu-Sindumin	13.32	6.29	19.61
	500	Jalan Kota Kinabalu-Keningau-Tenom	189.16	65.36	254.52
	501	Jalan Kota Kinabalu-Penampang-Lok Kawi	93.33	28.65	121.98
Papar	01	Jalan Kota Kinabalu-Sindumin	367.53	25.34	392.87
Ranau	22	Jalan Kota Kinabalu-Sandakan	396.58	39.32	435.90
Tambunan	500	Jalan Kota Kinabalu-Keningau-Tenom	68.13	21.13	89.26
Keningau	500	Jalan Kota Kinabalu-Keningau-Tenom	2.54	2.11	4.65
Tenom	500	Jalan Kota Kinabalu-Keningau-Tenom	3.45	0.00	3.45
Beaufort	01	Jalan Kota Kinabalu-Sindumin	41.71	0.27	41.98
	502	Jalan Beaufort-Menumbok	39.27	0.00	39.27
Sipitang	01	Jalan Kota Kinabalu-Sindumin	29.49	1.23	30.72
Kuala Penyu	502	Jalan Beaufort-Menumbok	16.06	0.00	16.06
TOTAL			2,489.52	271.73	2,761.25

LINTASAN RESOURCES SDN BHD (566483-H)
PRIVATISATION OF WEST COAST SABAH FEDERAL ROADS MAINTENANCE

SUMMARY FOR R01 - POTHOLE PATCHING RECORD

Ending Period : 31st August 2004

ITEM	DISTRICT	ROUTE NO.	ROAD NAME	AREA (m ²)			PREMIX QUANTITY (TON)		
				PREVIOUS MONTH	CURRENT MONTH	CUM. MONTH	PREVIOUS MONTH	CURRENT MONTH	CUM. MONTH
WEST COAST (NORTH)									
1	Kota Kinabalu	01	Jalan Kota Kinabalu - Kudat	3,270.43	260.49	3,530.92	471.68	31.89	503.57
2	Tuaran	01	Jalan Kota Kinabalu - Kudat	2,686.13	216.81	2,902.94	396.58	26.02	422.60
3	Tuaran	22	Jalan Kota Kinabalu - Sandakan	692.36	20.65	713.01	94.44	3.23	97.67
4	Tuaran	503	Jalan Berungis - Kota Belud	102.69	-	102.69	16.38	-	16.38
5	Kota Kinabalu	606	Jalan Susur Sepangar Bay	274.36	7.85	282.21	48.46	0.95	49.41
6	Kota Kinabalu	607	Jalan Masuk ke Pelabuhan Baru, K.K.	16.94	-	16.94	2.42	-	2.42
TOTAL:				7,042.91	505.80	7,548.71	1,029.96	62.09	1,092.05
WEST COAST (SOUTH)									
1	Kota Kinabalu	01	Jalan Kota Kinabalu - Sindumin	88.26	10.31	98.57	13.51	1.24	14.75
2	Penampang	01	Jalan Kota Kinabalu - Sindumin	111.53	47.25	158.78	13.32	6.29	19.61
2	Papar	01	Jalan Kota Kinabalu - Sindumin	2,702.56	197.85	2,900.41	367.53	25.34	392.87
3	Penampang	500	Jalan Kota Kinabalu - Keningau - Tenom	1,410.39	242.37	1,652.76	189.16	65.36	254.52
4	Penampang	501	Jalan Kota Kinabalu - Penampang - Lok Kawi	671.12	158.90	830.02	93.33	28.65	121.98
5	Kota Kinabalu	608	Jalan masuk ke Lapangan Terbang Lama, K.K.	40.30	25.05	65.35	5.27	3.20	8.47
TOTAL:				5,024.16	681.73	5,705.89	682.12	130.08	812.20
TOTAL FOR (NORTH + SOUTH) =				12,067.07	1,187.53	13,254.60	1,712.08	192.17	1,904.25

LINTASAN RESOURCES SDN BHD (566483-H)
 PRIVATISATION OF WEST COAST SABAH FEDERAL ROADS MAINTENANCE

SUMMARY FOR R01 - POTHOLE PATCHING RECORD

Ending Period : 31 August 2004

ITEM	DISTRICT	ROUTE NO.	ROADNAME	AREA (m ²)		PREMIX QUANTITY (TON)		INVENTORY CARRIAGEWAY ESTIMATE QTY (m ²)		
				PREVIOUS MONTH	CURRENT MONTH	PREVIOUS MONTH	CURRENT MONTH		PREVIOUS MONTH	CUM. MONTH
1	KOTA BELUD	01	Jalan Kota Kinabalu - Kudat	1,343.77	122.65	1,466.42	162.54	14.69	177.23	313,971.000
2	KOTA MARUDU	01	Jalan Kota Kinabalu - Kudat	62.27	6.75	69.02	7.55	0.81	8.36	180,993.00
3	KUDAT	01	Jalan Kota Kinabalu - Kudat	84.25	-	84.25	10.12	-	10.12	308,338.00
TOTAL				1,490.29	129.40	1,619.69	180.21	15.50	195.71	803,302.00

2

LINTASAN RESOURCES SDN BHD (566483-H)
 PRIVATISATION OF WEST COAST SABAH FEDERAL ROADS MAINTENANCE

SUMMARY FOR R01 - POTHOLE PATCHING RECORD

Ending Period : 30 AUGUST 2004

ITEM	DISTRICT	ROUTE NO.	ROADNAME	AREA (m ²)			PREMIX QUANTITY (TON)			INVENTORY CARRIAGEWAY EXTIMATE QTY (m2)
				PREVIOUS MONTH	CURRENT MONTH	CUM. MONTH	PREVIOUS MONTH	CURRENT MONTH	CUM. MONTH	
1	Tambunan	500	Jalan Kota Kinabalu - Keningau - Tenom	525.89	144.94	670.83	68.13	21.13	89.26	398,552.47
2	Keningau	500	Jalan Kota Kinabalu - Keningau - Tenom	20.13	17.53	37.66	2.54	2.11	4.65	278,055.67
3	Tenom	500	Jalan Kota Kinabalu - Keningau - Tenom	25.81	0.00	25.81	3.45	0.00	3.45	179,227.77
TOTAL				571.84	162.47	734.31	74.13	23.24	97.37	855,835.91

LINTASAN RESOURCES SDN BHD (566483-H)
 PRIVATISATION OF WEST COAST SABAH FEDERAL ROADS MAINTENANCE

ANALYSIS OF POTHOLE PATCHING WORK

Ending Period : 30 AUGUST 2004

MONTH DISTRICT	Accum. up to JUNE 2004			JULY 2004			AUGUST 2004			SEPTEMBER 2004			Current Accum.		
	NOS	AREA	TON	NOS	AREA	TON	NOS	AREA	TON	NOS	AREA	TON	NOS	AREA	TON
TAMBUNAN	264	452.612	59.32	37	73.27	8.77	60	144.94	21.13	0	0.00	0.00	361	670.82	89.22
KENINGAU	28	19.193	2.43	2	0.94	0.11	5	17.53	2.11	0	0.00	0.00	35	37.66	4.65
TENOM	37	25.062	3.36	1	0.74	0.09	0	0.00	0.00	0	0.00	0.00	38	25.80	3.45
TOTAL	329	496.868	65.11	40	74.95	8.97	65	162.47	23.24	0	0.00	0.00	434	734.29	97.32

LINTASAN RESOURCES SDN BHD (566483-H)
 PRIVATISATION OF WEST COAST SABAH FEDERAL ROADS MAINTENANCE

SUMMARY FOR R01 - POTHoles PATCHING RECORD

Ending Period : 31 August 2004

ITEM	DISTRICT	ROUTE NO.	ROADNAME	AREA (m ²)			PREMIX QUANTITY (TON)		
				PREVIOUS MONTH	CURRENT MONTH	CUM. MONTH	PREVIOUS MONTH	CURRENT MONTH	CUM. MONTH
1	Ranau	22	Jalan Kota Kinabalu - Sandakan	1,988.29	140.19	2,128.48	396.58	39.32	435.90
TOTAL				1,988.29	140.19	2,128.48	396.58	39.32	435.90

LINTASAN RESOURCES SDN BHD (566483-H)
 PRIVATISATION OF WEST COAST SABAH FEDERAL ROADS MAINTENANCE

SUMMARY FOR R01 - POTHOLE PATCHING RECORD

Ending Period : 31st August 2004

ITEM	DISTRICT	ROUTE NO.	ROADNAME	AREA (m ²)			PREMIX QUANTITY (TON)		
				PREVIOUS MONTH	CURRENT MONTH	CUM. MONTH	PREVIOUS MONTH	CURRENT MONTH	CUM. MONTH
1	Beaufort	01	Jalan Kota Kinabalu - Sindumin	337.69	2.26	339.95	41.71	0.27	41.98
2	Beaufort	502	Jalan Beaufort-Menumbok	323.79	0.00	323.79	39.27	0.00	39.27
3	Sipitang	01	Jalan Kota Kinabalu - Sindumin	243.84	10.36	254.20	29.49	1.23	30.72
4	Kuala Penyu	502	Jalan Beaufort-Menumbok	133.79	0.00	133.79	16.06	0.00	16.06
TOTAL				1,039.11	12.62	1,051.73	126.53	1.50	128.03

DISTRICT : KOTA MARUDU
ROUTE NO : 01-JALAN KOTA KINABALU-KUDAT
LOCATION : CH123.730

R01 PAVEMENT



Film Batch No: P8170001

BEFORE



Film Batch No: P8170002

IN PROGRESS



Film Batch No: P8170003

AFTER

DISTRICT : KOTA KINABALU
ROUTE NO : 608 JALAN MASUK KE LAPANGAN TEBANG LAMA
LOCATION : KM0.610 (LHS)

R01 PAVEMENT(Sealing Of Cracks)



Film Batch No: P8230016

BEFORE



Film Batch No: P8230017

IN PROGRESS



Film Batch No: P8230021

AFTER

DISTRICT : PENAMPANG
ROUTE NO. : 01 JALAN KOTA KINABALU - SINDUMIN

LOCATION : KM 9.785

R01 PAVEMENT (Sealing of Crack)

Film Batch No: 1223/11



BEFORE

Film Batch No: 1223/13



IN PROGRESS

Film Batch No: 1223/14



AFTER

58

R01 PAVEMENT (Sealing of Crack)

Film Batch No: 1213/10



BEFORE

Film Batch No: 1213/11



IN PROGRESS

Film Batch No: 1213/13



AFTER

LINTASAN RESOURCES SDN. BHD.
PAVEMENT REPAIR (SEALING OF CRACKS)
GRAND SUMMARY

MONTH: AUGUST 2004

R01 - PAVEMENT REPAIR					
DISTRICT	ROUTE NO.	ROAD NAME	Sealing of Cracks		
			Previous Mth	Current Mth	Cummulative
			(m)	(m)	(m)
Kota Belud	01	Jalan Kota Kinabalu-Kudat			0.00
Kota Marudu	01	Jalan Kota Kinabalu-Kudat			0.00
Kudat	01	Jalan Kota Kinabalu-Kudat			0.00
Tuaran	01	Jalan Kota Kinabalu-Kudat			0.00
	22	Jalan Kota Kinabalu-Sandakan			0.00
	503	Jalan Berungis-Kota Belud			0.00
Kota Kinabalu	01	Jalan Kota Kinabalu-Kudat	209.69	213.75	423.44
	01	Jalan Kota Kinabalu-Sindumin			0.00
	606	Jalan Susur Sepangar Bay			0.00
	607	Jalan Masuk Ke Pelabuhan Baru			0.00
	608	Jalan K Masuk Ke Lapangan Terbang Lama	0.00	180.30	180.30
Penampang	01	Jalan Kota Kinabalu-Sindumin	0.00	1,761.30	1,761.30
	500	Jalan Kota Kinabalu-Keningau-Tenom			0.00
	501	Jalan Kota Kinabalu-Penampang-Lok Kawi			0.00
Papar	01	Jalan Kota Kinabalu-Sindumin	0.00	1,004.20	1,004.20
Ranau	22	Jalan Kota Kinabalu-Sandakan			0.00
Tambunam	500	Jalan Kota Kinabalu-Keningau-Tenom			0.00
Keningau	500	Jalan Kota Kinabalu-Keningau-Tenom			0.00
Tenom	500	Jalan Kota Kinabalu-Keningau-Tenom			0.00
Beaufort	01	Jalan Kota Kinabalu-Sindumin			0.00
	502	Jalan Beaufort-Menumbok			0.00
Sipitang	01	Jalan Kota Kinabalu-Sindumin			0.00
Kuala Penyu	502	Jalan Beaufort-Menumbok			0.00
TOTAL			209.69	3,159.55	3,369.24

70

LINTASAN RESOURCES SDN BHD (566483-H)
PRIVATISATION OF WEST COAST SABAH FEDERAL ROADS MAINTENANCE

SUMMARY FOR R01 - SEALING OF CRACK RECORD

Ending Period : 31st August 2004

ITEM	DISTRICT	ROUTE NO.	ROAD NAME	LENGTH (m)		
				PREVIOUS MONTH	CURRENT MONTH	CUM. MONTH
WEST COAST (NORTH)						
1	Kota Kinabalu	01	Jalan Kota Kinabalu - Kudat	209.69	213.75	423.44
2	Tuaran	01	Jalan Kota Kinabalu - Kudat	-	-	-
3	Tuaran	22	Jalan Kota Kinabalu - Sandakan	-	-	-
4	Tuaran	503	Jalan Berungis - Kota Belud	-	-	-
5	Kota Kinabalu	606	Jalan Susur Sepangar Bay	-	-	-
6	Kota Kinabalu	607	Jalan Masuk ke Pelabuhan Baru, K.K.	-	-	-
TOTAL:				209.69	213.75	423.44
WEST COAST (SOUTH)						
1	Kota Kinabalu	01	Jalan Kota Kinabalu - Sindumin	-	-	-
2	Penampang	01	Jalan Kota Kinabalu - Sindumin	-	1,761.30	1,761.30
2	Papar	01	Jalan Kota Kinabalu - Sindumin	-	1,004.20	1,004.20
3	Penampang	500	Jalan Kota Kinabalu - Keningau - Tenom	-	-	-
4	Penampang	501	Jalan Kota Kinabalu - Penampang - Lok Kawi	-	-	-
5	Kota Kinabalu	608	Jalan masuk ke Lapangan Terbang Lama, K.K.	-	180.30	180.30
TOTAL:				-	2,945.80	2,945.80
TOTAL LENGTH OF CRACK SEALED FOR (NORTH + SOUTH) =				209.69	3,159.55	3,369.24