

**PENSWASTAAN PENYENGGARAAN  
JALAN-JALAN PERSEKUTUAN DI SABAH  
(PANTAI BARAT & PENDALAMAN)**



**THE GOVERNMENT OF MALAYSIA**

**LAPORAN KEMAJUAN BULANAN  
No. 11**

**JULAI 2004**



*Jabatan Kerja Raya, Negeri Sabah*

*Kontraktor : Lintasan Resources Sdn. Bhd. 566483-H*

**R 01**

**PENYENGGARAAN  
PERMUKAAN JALAN  
(POTHOLE PATCHING)**

DISTRICT : KOTA BELUD

ROUTE NO. : 01 JALAN KOTA KINABALU-KUDAT

LOCATION : KM 104.570

### R01 POTHOLE PATCHING

FILM BATCH NO: 3675/31



BEFORE

FILM BATCH NO: 3675/32



IN PROGRESS

FILM BATCH NO: 3675/34



AFTER

DISTRICT : KOTA BELUD

ROUTE NO. : 01 JALAN KOTA KINABALU-KUDAT

LOCATION

: KM 83.820

### R01 POTHOLE PATCHING

FILM BATCH NO: 3675/27



BEFORE

FILM BATCH NO: 3675/28



IN PROGRESS

FILM BATCH NO: 3675/30



AFTER

R01 PAVEMENT

Film Batch No: 1155/13



BEFORE

Film Batch No: 1155/14



IN PROGRESS

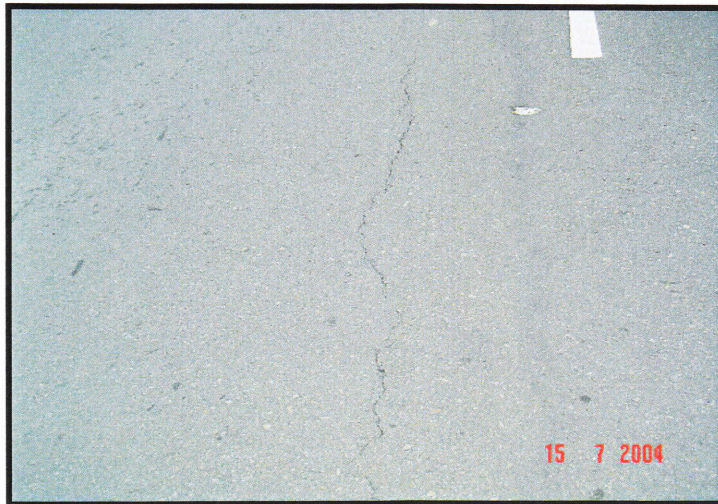
Film Batch No: 1155/15



AFTER

DISTRICT : PENAMPANG  
ROUTE NO : 501 JALAN KOTA KINABALU-PENAMPANG-LOK KAWI  
LOCATION : KM5.100 (LHS)

**RO1 PAVEMENT - Sealing of Surface Cracks**



Film Batch No: DSC02031

**BEFORE**



Film Batch No: DSC02032

**IN PROGRESS**



Film Batch No: DSC02035

**AFTER**

DISTRICT : PENAMPANG  
ROUTE NO : 501 JALAN KOTA KINABALU-PENAMPANG-LOK KAWI  
LOCATION : KM4.900 (LHS)

### RO1 PAVEMENT - Sealing of Surface Cracks



Film Batch No: DSC02015

**BEFORE**



Film Batch No: DSC02016

**IN PROGRESS**



Film Batch No: DSC02021

**AFTER**

R01: PAVEMENT

FILM BATCH NO: 3744/0



BEFORE

FILM BATCH NO: 3744/2



IN PROGRESS

FILM BATCH NO: 3744/5



AFTER

**R01 POTHOLE PATCHING**

FILM BATCH NO: 0157/23



**BEFORE**

FILM BATCH NO: 0157/00



**IN PROGRESS**

FILM BATCH NO : 0188/10



**AFTER**

### SEALING OF CRACKS

FILM BATCH NO: 0201/21



BEFORE

FLIM BATCH NO : 0201/22



IN PROGRESS

FLIM BATCH NO : 0201/23



AFTER

**R01 POTHOLE PATCHING**

FILM BATCH NO: 0109/8



**BEFORE**

FILM BATCH NO: 0109/9



**IN PROGRESS**

FILM BATCH NO : 0119/8



**AFTER**

LINTASAN RESOURCES SDN. BHD.  
**PAVEMENT REPAIR (POTHOLE PATCHING)**  
GRAND SUMMARY

MONTH: JULY 2004

<b>R01 - PAVEMENT REPAIR</b>					
DISTRICT	ROUTE NO.	ROAD NAME	PREMIX FOR POTHOLE		
			Previous Month	Current Month	Cummulative
			(Ton)	(Ton)	(Ton)
Kota Belud	01	Jalan Kota Kinabalu-Kudat	146.78	15.76	162.54
Kota Marudu	01	Jalan Kota Kinabalu-Kudat	7.55	0.00	7.55
Kudat	01	Jalan Kota Kinabalu-Kudat	10.12	0.00	10.12
Tuaran	01	Jalan Kota Kinabalu-Kudat	326.68	69.90 734.35	396.58 1,061.03
	22	Jalan Kota Kinabalu-Sandakan	94.44	0.00	94.44
	503	Jalan Berungis-Kota Belud	15.25	1.13	16.38
Kota Kinabalu	01	Jalan Kota Kinabalu-Kudat	443.32	28.36	471.68
	01	Jalan Kota Kinabalu-Sindumin	13.09	0.42	13.51
	606	Jalan Susur Sepangar Bay	44.60	3.86	48.46
	607	Jalan Masuk Ke Pelabuhan Baru	2.42	0.00	2.42
	608	Jalan K Masuk Ke Lapangan Terbang Lama	5.27	0.00	5.27
Penampang	01	Jalan Kota Kinabalu-Sindumin	13.32	0.00	13.32
	500	Jalan Kota Kinabalu-Keningau-Tenom	186.70	2.46	189.16
	501	Jalan Kota Kinabalu-Penampang-Lok Kawi	93.30	0.03	93.33
Papar	01	Jalan Kota Kinabalu-Sindumin	353.10	14.43	367.53
Ranau	22	Jalan Kota Kinabalu-Sandakan	366.29	30.29	396.58
Tambunam	500	Jalan Kota Kinabalu-Keningau-Tenom	59.36	8.77	68.13
Keningau	500	Jalan Kota Kinabalu-Keningau-Tenom	2.44	0.11	2.55
Tenom	500	Jalan Kota Kinabalu-Keningau-Tenom	3.36	0.09	3.45
Beaufort	01	Jalan Kota Kinabalu-Sindumin	40.89	0.82	41.71
	502	Jalan Beaufort-Menumbok	33.72	5.55	39.27
Sipitang	01	Jalan Kota Kinabalu-Sindumin	26.76	2.73	29.49
Kuala Penyu	502	Jalan Beaufort-Menumbok	13.70	2.36	16.06
<b>TOTAL</b>			<b>2,302.46</b>	<b>851.52</b>	<b>3,153.98</b>

187.07

2,489.53

**LINTASAN RESOURCES SDN BHD** (566483-H)  
 PRIVATISATION OF WEST COAST SABAH FEDERAL ROADS MAINTENANCE

SUMMARY FOR R01 - POTHOLES PATCHING RECORD

Ending Period : 31 July 2004

ITEM	DISTRICT	ROUTE NO.	ROADNAME	AREA ( m <sup>2</sup> )		PREMIX QUANTITY ( TON )			INVENTORY CARRIAGEWAY ESTIMATE QTY (m <sup>2</sup> )	
				PREVIOUS MONTH	CURRENT MONTH	CUM. MONTH	PREVIOUS MONTH	CURRENT MONTH		CUM. MONTH
1	KOTA BELUD	01	Jalan Kota Kinabalu - Kudat	1,212.62	131.15	1,343.77	146.78	15.76	162.54	313,971.000
2	KOTA MARUDU	01	Jalan Kota Kinabalu - Kudat	62.27	-	62.27	7.55	-	7.55	180,993.00
3	KUDAT	01	Jalan Kota Kinabalu - Kudat	84.25	-	84.25	10.12	-	10.12	308,338.00
<b>TOTAL</b>				<b>1,359.14</b>	<b>131.15</b>	<b>1,490.29</b>	<b>164.45</b>	<b>15.76</b>	<b>180.21</b>	<b>803,302.00</b>

**LINTASAN RESOURCES SDN BHD** (566483-H)  
**PRIVATISATION OF WEST COAST SABAH FEDERAL ROADS MAINTENANCE**

SUMMARY FOR R01 - POTHOLES PATCHING RECORD

Ending Period : 31st July 2004

ITEM	DISTRICT	ROUTE NO.	ROAD NAME	AREA ( m <sup>2</sup> )			PREMIX QUANTITY ( TON )		
				PREVIOUS MONTH	CURRENT MONTH	CUM. MONTH	PREVIOUS MONTH	CURRENT MONTH	CUM. MONTH
<b>WEST COAST (NORTH)</b>									
1	Kota Kinabalu	01	Jalan Kota Kinabalu - Kudat	3,034.06	236.37	3,270.43	443.32	28.36	471.68
2	Tuaran	01	Jalan Kota Kinabalu - Kudat	2,104.56	581.57	2,686.13	326.68	69.90	396.58
3	Tuaran	22	Jalan Kota Kinabalu - Sandakan	692.36	-	692.36	94.44	-	94.44
4	Tuaran	503	Jalan Berungis - Kota Belud	93.27	9.42	102.69	15.25	1.13	16.38
5	Kota Kinabalu	606	Jalan Susur Sepangar Bay	242.19	32.17	274.36	44.60	3.86	48.46
6	Kota Kinabalu	607	Jalan Masuk ke Pelabuhan Baru, K.K.	16.94	-	16.94	2.42	-	2.42
<b>TOTAL:</b>				<b>6,183.38</b>	<b>859.53</b>	<b>7,042.91</b>	<b>926.71</b>	<b>103.25</b>	<b>1,029.96</b>
<b>WEST COAST (SOUTH)</b>									
1	Kota Kinabalu	01	Jalan Kota Kinabalu - Sindumin	84.78	3.48	88.26	13.09	0.42	13.51
2	Penampang	01	Jalan Kota Kinabalu - Sindumin	111.53	-	111.53	13.32	-	13.32
2	Papar	01	Jalan Kota Kinabalu - Sindumin	2,582.47	120.09	2,702.56	353.10	14.43	367.53
3	Penampang	500	Jalan Kota Kinabalu - Keningau - Tenom	1,390.06	20.33	1,410.39	186.70	2.46	189.16
4	Penampang	501	Jalan Kota Kinabalu - Penampang - Lok Kawi	670.92	0.20	671.12	93.30	0.03	93.33
5	Kota Kinabalu	608	Jalan masuk ke Lapangan Terbang Lama, K.K.	40.30	-	40.30	5.27	-	5.27
<b>TOTAL:</b>				<b>4,880.06</b>	<b>144.10</b>	<b>5,024.16</b>	<b>664.78</b>	<b>17.34</b>	<b>682.12</b>
<b>TOTAL FOR ( NORTH + SOUTH ) =</b>				<b>11,063.44</b>	<b>1,003.63</b>	<b>12,067.07</b>	<b>1,591.49</b>	<b>120.59</b>	<b>1,712.08</b>

**LINTASAN RESOURCES SDN BHD** (566483-H)  
 PRIVATISATION OF WEST COAST SABAH FEDERAL ROADS MAINTENANCE

SUMMARY FOR R01 - POTHLES PATCHING RECORD

Ending Period : 31 July 2004

ITEM	DISTRICT	ROUTE NO.	ROADNAME	AREA ( m <sup>2</sup> )			PREMIX QUANTITY ( TON )		
				PREVIOUS MONTH	CURRENT MONTH	CUM. MONTH	PREVIOUS MONTH	CURRENT MONTH	CUM. MONTH
1	Ranau	22	Jalan Kota Kinabalu - Sandakan	1,828.00	160.29	1,988.29	366.29	30.29	396.58
<b>TOTAL</b>				<b>1,828.00</b>	<b>160.29</b>	<b>1,988.29</b>	<b>366.29</b>	<b>30.29</b>	<b>396.58</b>

**LINTASAN RESOURCES SDN BHD** (566483-H)  
 PRIVATISATION OF WEST COAST SABAH FEDERAL ROADS MAINTENANCE

SUMMARY FOR R01 - POTHoles PATCHING RECORD

Ending Period : 31st July 2004

ITEM	DISTRICT	ROUTE NO.	ROADNAME	AREA ( m <sup>2</sup> )			PREMIX QUANTITY ( TON )		
				PREVIOUS MONTH	CURRENT MONTH	CUM. MONTH	PREVIOUS MONTH	CURRENT MONTH	CUM. MONTH
1	Beaufort	01	Jalan Kota Kinabalu - Sindumin	330.84	6.85	337.69	40.89	0.82	41.71
2	Beaufort	502	Jalan Beaufort-Menumbok	277.47	46.32	323.79	33.72	5.55	39.27
3	Sipitang	01	Jalan Kota Kinabalu - Sindumin	221.10	22.74	243.84	26.76	2.73	29.49
4	Kuala Penyu	502	Jalan Beaufort-Menumbok	114.12	19.67	133.79	13.70	2.36	16.06
<b>TOTAL</b>				<b>943.53</b>	<b>95.58</b>	<b>1,039.11</b>	<b>115.07</b>	<b>11.46</b>	<b>126.53</b>