

**PENSWASTAAN PENYENGGARAAN
JALAN-JALAN PERSEKUTUAN DI SABAH
(PANTAI BARAT & PENDALAMAN)**



THE GOVERNMENT OF MALAYSIA

**LAPORAN KEMAJUAN BULANAN
No. 5**

JANUARI 2004



Jabatan Kerja Raya, Negeri Sabah

Kontraktor : Lintasan Resources Sdn. Bhd. 566483-H

R 01

**PENYENGGARAAN
PERMUKAAN JALAN
(POTHOLE PATCHING)**

R01 POTHOLE PATCHING

FILM BATCH NO: B 04/6



FILM BATCH NO: B 04/8



FILM BATCH NO: B 04/9



R01 POTHOLE PATCHING

FILM BATCH NO.:3783/12



BEFORE

FILM BATCH NO.:3783/00



IN PROGRESS

FILM BATCH NO.:3896/02



AFTER

R01 POTHOLE PATCHING

FILM BATCH NO: B 04/7



FILM BATCH NO: B 04/7



FILM BATCH NO: B 04/8



LINTASAN RESOURCES SDN BHD (566483-H)
 PRIVATISATION OF WEST COAST SABAH FEDERAL ROADS MAINTENANCE

SUMMARY FOR R01 - POTHOLE PATCHING RECORD

Ending Period : 31 January 2004

ITEM	DISTRICT	ROUTE NO.	ROADNAME	AREA (m ²)		PREMIX QUANTITY (TON)			
				PREVIOUS MONTH	CURRENT MONTH	CUM. MONTH	PREVIOUS MONTH	CURRENT MONTH	CUM. MONTH
1	KOTA BELUD	01	Jalan Kota Kinabalu - Kudat	375.36	111.69	487.05	45.52	13.48	59.00
2	KOTA MARUDU	01	Jalan Kota Kinabalu - Kudat	29.53	12.03	41.56	3.56	1.46	5.02
3	KUDAT	01	Jalan Kota Kinabalu - Kudat	45.35	14.68	60.03	5.45	1.77	7.22
TOTAL				450.24	138.40	588.64	54.53	16.71	71.24

R01 PAVEMENT

Film Batch No: 0582/3



BEFORE

Film Batch No: 0582/4



IN PROGRESS

Film Batch No: 0582/5



AFTER

R01 PAVEMENT

Film Batch No: 0582/10



BEFORE

Film Batch No: 0582/11



IN PROGRESS

Film Batch No: 0582/12



AFTER

R01 PAVEMENT

Film Batch No: 0582/7



BEFORE

Film Batch No: 0582/8



IN PROGRESS

Film Batch No: 0582/9



AFTER

R01 PAVEMENT

Film Batch No: 0612/12



BEFORE

Film Batch No: 0612/13



IN PROGRESS

Film Batch No: 0612/14



AFTER

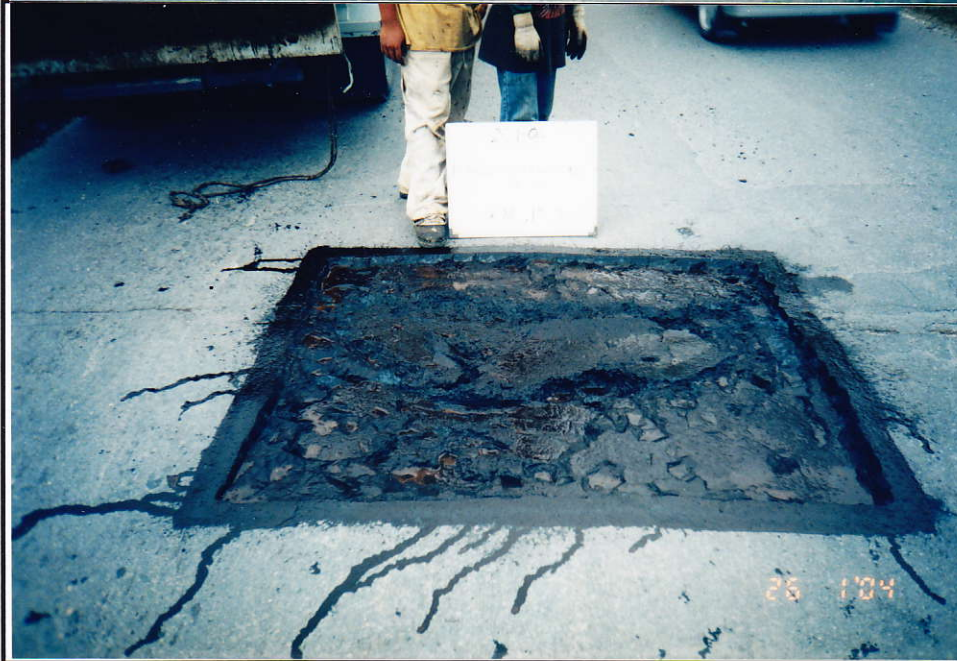
R01 PAVEMENT

Film Batch No: 0612/15



BEFORE

Film Batch No: 0612/16



IN PROGRESS

Film Batch No: 0612/17



AFTER

LINTASAN RESOURCES SDN BHD (566483-H)
PRIVATISATION OF WEST COAST SABAH FEDERAL ROADS MAINTENANCE

SUMMARY FOR R01 - POTHoles PATCHING RECORD

Ending Period : 31st January 2004

ITEM	DISTRICT	ROUTE NO.	ROADNAME	AREA (m ²)			PREMIX QUANTITY (TON)		
				PREVIOUS MONTH	CURRENT MONTH	CUM. MONTH	PREVIOUS MONTH	CURRENT MONTH	CUM. MONTH
1	Kota Kinabalu	01	Jalan Kota Kinabalu - Kudat	1043.94	987.11 ✓	2031.05	182.01	137.91 ✓	319.92
2	Kota Kinabalu	01	Jalan Kota Kinabalu - Sindumin	44.24	-	44.24	7.87	-	7.87
3	Kota Kinabalu	606	Jalan Susur Sepangar Bay	33.41	-	33.41	4.93	-	4.93
4	Kota Kinabalu	607	Jalan masuk ke Pelabuhan Baru, K.K.	5.72	7.92 ✓	13.64	0.76	1.22 ✓	1.98
5	Kota Kinabalu	608	Jalan masuk ke Lapangan Terbang Lama, K.K.	10.79	-	10.79	1.49	-	1.49
6	Penampang	500	Jalan Kota Kinabalu - Keningau - Tenom	278.18	314.65	592.83	41.20	44.42 ✓	85.62
7	Penampang	501	Jalan Kota Kinabalu - Penampang - Lok Kawi	188.00	51.52	239.52	29.38	6.97	36.35
8	Papar	01	Jalan Kota Kinabalu - Sindumin	737.99	194.89	932.88	105.46	30.86	136.32
9	Tuaran	01	Jalan Kota Kinabalu - Kudat	58.25	415.11 ✓	473.36	50.05	57.11 ✓	107.16
10	Tuaran	503	Jalan Berungis - Kota Belud	49.20	7.55 ✓	56.75	8.59	0.89 ✓	9.48
11	Tuaran	22	Jalan Kota Kinabalu - Sandakan	263.72	-	263.72	41.51	-	41.51
TOTAL				2,713.44	1,978.75	4,692.19	473.25	279.38	752.63

LINTASAN RESOURCES SDN BHD (566483-H)
 PRIVATISATION OF WEST COAST SABAH FEDERAL ROADS MAINTENANCE

SUMMARY FOR R01 - POTHOLE PATCHING RECORD

Ending Period : 31st January 2004

ITEM	DISTRICT	ROUTE NO.	ROADNAME	AREA (m ²)		PREMIX QUANTITY (TON)		
				PREVIOUS MONTH	CURRENT MONTH	PREVIOUS MONTH	CURRENT MONTH	CUM. MONTH
1	Tambunan	500	Jalan Kota Kinabalu - Keningau - Tenom	151.33	76.68	19.55	9.57	29.12
2	Keningau	500	Jalan Kota Kinabalu - Keningau - Tenom	7.43	4.29	1.03	0.51	1.54
3	Tenom	500	Jalan Kota Kinabalu - Keningau - Tenom	19.07	3.70	2.47	0.45	2.92
TOTAL				177.83	84.67	23.05	10.53	33.58

R01 POTHOLE PATCHING

FILM BATCH NO:6923/22



BEFORE

FILM BATCH NO:6923/23



IN PROGRESS

FILM BATCH NO:7411/31



AFTER

LINTASAN RESOURCES SDN BHD (566483-H)
 PRIVATISATION OF WEST COAST SABAH FEDERAL ROADS MAINTENANCE

SUMMARY FOR R01 - POTHOLE PATCHING RECORD

Ending Period : 31st January 2004

ITEM	DISTRICT	ROUTE NO.	ROADNAME	AREA (m ²)		PREMIX QUANTITY (TON)			
				PREVIOUS MONTH	CURRENT MONTH	CUM. MONTH	PREVIOUS MONTH	CURRENT MONTH	CUM. MONTH
1	Beaufort	01	Jalan Kota Kinabalu - Sindumin	129.32	20.57	149.89	15.64	2.46	18.10
2	Beaufort	502	Jalan Beaufort-Menumbok	56.35	57.96	114.31	6.79	6.95	13.74
3	Sipitang	01	Jalan Kota Kinabalu - Sindumin	108.41	12.68	121.09	13.00	1.77	14.77
4	Kuala Penyu	502	Jalan Beaufort-Menumbok	45.88	0.00	45.88	5.50	0.00	5.50
TOTAL				339.96	91.21	431.17	40.93	11.18	52.11

DISTRICT : BEAUFORT
ROUTE NO. : 01 JALAN KOTA KINABALU-SINDUMIN LOCATION : KM108.380 (LHS)

R01 POTHOLE PATCHING



BEFORE



AFTER